



VERADO[®] 350

SUPERCHARGED FOURSTROKE



Maximum Power from a Trusted Source

With the 2015 addition of the **Verado 350hp**, Mercury's family of supercharged Verado engines continues to lead the market in high-horsepower outboard propulsion. Verado was the marine industry's first four-stroke outboard to deliver two-strokelike holeshot and mid-range punch in a remarkably smooth, quiet package. Likewise, the Verado 350 – truly an iron fist in a velvet glove – delivers the **quickest acceleration and fastest top speeds on the market**, combined with ease of maintenance and rugged durability.



More Miles per Fill-Up

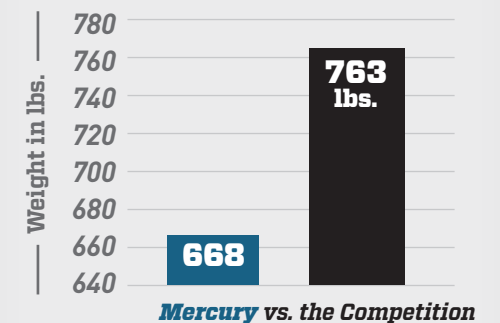
Engineered with the most efficient engine design, the Verado 350 provides 5-10% greater fuel economy than competitive outboards, which could translate in up to **80 miles in additional range** per fill-up and hundreds of dollars saved at the pump each year.



Lightweight / Compact Design

At just 668 pounds, the Verado 350 is 95 pounds lighter than its competition, and its compact design **provides a less-obstructed view and easier water access for fishing.**

350hp Weight Comparison



Dry weight specification is for the lightest-version model. Comparative weights refer to base engines without oil, propeller or integral steering cylinder.

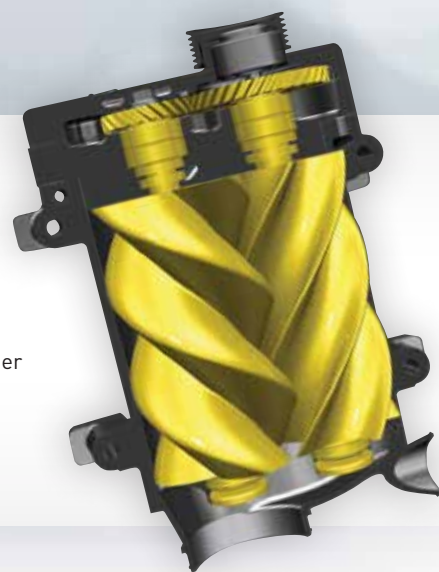
Proven Performance & Durability

*The unmatched supercharged performance of Verado has impressed and satisfied boaters for more than a decade, and has been proven with **millions of hours** of real-world experience.*

The Verado 350 has superior torque across the operating range, creating rocketlike holeshot and faster top-end speed. But the engine is not a simple brute; it features all-new, intelligent design enhancements to extend its best-in-class driving experience.

Water-Cooled Supercharger

The intuitive Verado 350 design taps into the engine's cooling system to cool the supercharger and reduce the effort required to compress air, thereby increasing efficiency and durability.



Cold-Air Intake

The Verado 350 can breathe! The cold-air intake system is designed to capture cool, fresh air from outside the cowl and deliver it directly and efficiently to the supercharger.

The larger, straighter airflow path is a more efficient design that creates less turbulence. The unique labyrinth design in the top cowl keeps the powerhead dry.



Optimized Guide Plates

More horsepower means operating at higher speeds, which, while exciting, requires greater vessel control. Exclusive, optimized guide plates give the Verado 350 superior handling at high speeds, which means you'll have greater confidence in hard-running situations.



Styled Vented Flywheel Cover

The Verado 350 has vents in its flywheel cover that allow engine heat to dissipate more easily. Lower operating temperatures help to improve the efficiency and durability of the engine, and its components.



89-Octane Compatible

Built with Mercury Marine's improved Knock Control System, the Verado 350 delivers reliable, industry-leading performance on 89 Octane fuel. This allows you to fill up at more places on the waterfront.



Power When You Need It

Mercury's exclusive Idle Charge system adaptively increases engine RPM at low engine speeds when battery voltage is too low. This makes more current available for increased house loads due to greater electronics integration – and ensures you always have the power you need to maintain safe operation.

Verado®... The Name Says it All

Engineered to provide the best all-around driving experience, Mercury Verado supercharged 175hp to 350hp FourStroke engines are the most sophisticated, best engineered outboard engines on the market. Since its original launch in 2004, Verado has become synonymous with supercharged power and torque; industry-leading performance, fuel economy and handling; true power steering, and minimized noise and vibration. In short, **Mercury Verado is the ultimate outboard.**

With the introduction of the high-horsepower 350, Verado is pulling even farther ahead of the competition.



Digital Throttle & Shift

Mercury's trademark **SmartCraft® Digital Throttle & Shift (DTS)** system provides smooth, instantaneous, predictable and quiet shifting. It provides ultra-responsive throttle control, while Verado's electro-hydraulic power steering (standard on six-cylinder models) delivers precision handling without producing undesirable steering torque.

Quiet Ride

The inherently balanced in-line six-cylinder Verado engine and **Advanced Mid Section (AMS) design with perimeter mounts** virtually eliminate vibration in the boat. The result is calm, confident power – and the ability to creep up on unsuspecting fish.

Geared Right

Verado's robust **5.44-inch-diameter gearcase** is built to handle offshore seas, and to provide extra lift for longer, heavier center-console and walk-around boats. Gears are precision-machined in-house at Mercury Marine to ensure the highest levels of quality and durability in the industry.



Gears are precision-machined in-house at Mercury Marine to ensure the highest levels of *quality and durability*.

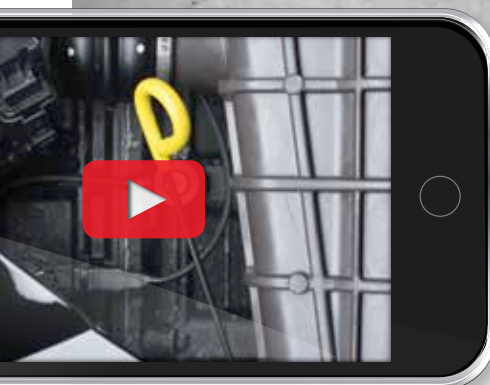
Easiest to Maintain

Save money and time with Verado FourStrokes, the easiest outboards to maintain on the market. Every inch of this class-leading engine family is designed with ease of maintenance in mind, including an exclusive **lifetime maintenance-free** (yes, you read that right!) **valve train**.



Maintenance-Free Valve Train

Thanks to "Lash for Life" valve train technology, available exclusively on Mercury's Verado, you'll never have to take your outboard to a technician for an expensive valve-lash adjustment. Unlike other four-strokes, these truly are maintenance-free.



DIY Instructions

When routine service is needed, it's nice to have the instructions posted where you immediately can find them. Use your smartphone to scan the QR code on the maintenance label under the cowl and it will link you to a Mercury playlist of "how-to" online videos.

Freshwater Flush

Mercury's patented system lets you flush the engine from inside or outside of the boat. It's engineered to keep the hose from kinking, and the flush-mounted cap is tethered for convenience.





JOYSTICK PILOTING

Mercury® Joystick Piloting for Outboards — the system that allows you to effortlessly move your large outboard-powered boat in any direction with the push or twist of a joystick — takes the stress out of docking and maneuvering in tight spaces and less-than-ideal environments.



Digital Advantage

Joystick Piloting lets you control multiple Verado 350 outboards simultaneously with a single hand, even in challenging wind and current conditions. The system seamlessly integrates with Mercury Digital Throttle and Shift and with electro-hydraulic power steering.

- Easy joystick docking and maneuvering
- Quieter and more capable than bow or stern thrusters
- Proportional joystick allows control of both throttle and steering with one hand
- SmartCraft® Digital Throttle & Shift (DTS) and electro-hydraulic power steering
- System can be maintained while boat is in the water
- Mercury's engine-matched warranty provides confident boating for years to come
- All components manufactured by Mercury Marine



SKYHOOK®

Only Mercury Skyhook® digital anchor allows you to lock your boat's position using a GPS satellite antenna. Then, working with your engines and drives, Skyhook maintains your position and heading regardless of wind or current.

Skyhook is ideal for holding the boat over a fishing spot, waiting for bridges to open or holding position while next in line at a fuel docking station.



SHADOW MODE

Mercury "shadow technology" eliminates the hassle of grappling with multiple engine levers when running with triple or quadruple outboards. Shadow mode controls up to four engines with just two levers from as many as two helm stations.



VESSELVIEW®

The VesselView engine-information display places vessel-system information in a single location, including fuel level and range, oil temperature and pressure, water depth and much more. VesselView® 4 & 7 come standard with SmartTow®, Troll Control, Cruise Control and ECO mode, which can increase fuel savings by up to 20%.

White Hat, Black Hat

Mercury Marine offers the Verado 350 in a choice of colors. In addition to our standard Phantom Black, you also can order the engine in either of two shades of white – **Cold Fusion** or **Warm Fusion** – that will complement almost any boat design or style.

ADVANCED PAINT SYSTEMS

Mercury paint is engineered and designed specifically for the marine environment. The Mercury paint process provides superior bonding to engineered polymers and metals through multiple coatings. A combination of manual and robotic paint applications yields an outstanding deep color finish, and multiple base and clear coatings provide a long-lasting finish in even the harshest of marine environments.

TESTED TOUGH

Mercury designed and tested its Cold Fusion White and Warm Fusion White paints for superior durability. Rigorous in-house lab tests were performed to Mercury standards developed from 75 years of experience in the marine industry. Mercury then tested the long-term durability of the finish in the lab, followed by outdoor endurance testing at the Mercury Marine Environmental Test Center in Florida.

COLD FUSION WHITE

WARM FUSION WHITE





Verado 350HP

SUPERCHARGED FOURSTROKE

| | |
|-------------------|----------------------------------------------------------|
| Horsepower | 350 |
| Full Throttle RPM | 5800-6400 |
| Engine Type | I-6, 24-valve, DOHC |
| Displacement | 158.5 cu in (2.6L) |
| Induction System | Supercharged w/charge air cooling |
| Starting | SmartStart electric |
| Gear Ratio | 5.44 in (1.75:1) HD |
| Alternator Output | 70 amp (882 watt) |
| Trim System | SmartCraft programmable trim and tilt |
| Dry Weight* | 668lbs (303kg) |
| Steering | Electro-hydraulic power steering |
| Shaft Length | 20 in (508mm) CR 25 in (635mm) CR 30 in (762mm) CR |



Industry-Leading Protection

Every Verado engine comes with Mercury Marine's class-leading corrosion protection, including its use of low-copper **aluminum silicon alloys** and its high-tech paint system that features irridite metal prep and sealing, electro-deposition paint (EDP) priming and powder-paint top coat. Peace of mind comes standard – thanks to Mercury's industry-exclusive three-year limited corrosion warranty.



Note: Due to our constant efforts to offer the finest products available, we reserve the right to change specifications without notice. See your Mercury Authorized Dealer for optional gearcase styles and gear ratios and for more information on the propeller that is right for you. CR Counter-Rotation Model available. *Dry weight specification is for the lightest-version model. Comparative weights refer to base engines without oil, propeller or integral steering cylinder.



We're behind you.

*Meet the people behind the industry's best ownership experience:
the detail-minded, quality-focused people of Mercury Marine.
Their dedication, experience, and passion for boating make your
time on the water better.*

*Get to know the team behind the industry's best
ownership experience at **MercuryMarine.com***

*For information regarding Mercury Marine's
complete lineup of 2.5 - 350hp outboards, and
its complete lineup of gas and diesel sterndrive
packages, please visit **MercuryMarine.com***



P/N 90-8M0102814 **EFFECTIVE FEBRUARY 2015**

©2015 MERCURY MARINE, All rights reserved.
Reproduction in whole or in part without permission is prohibited.

