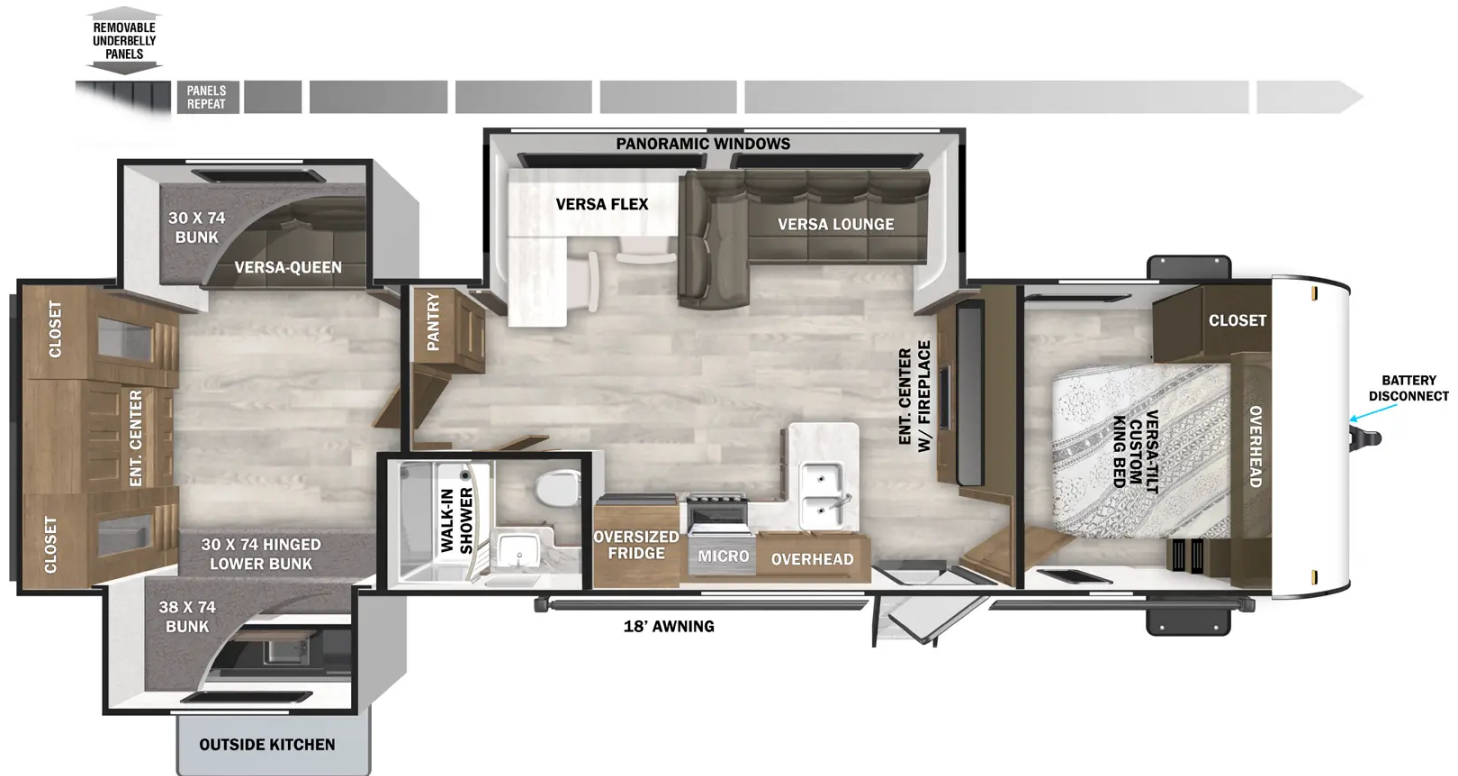




SALEM 31KQBTS FLOORPLAN

The 31KQBTS is the ultimate bunkhouse, with three total slide outs and an outside kitchen. This well-equipped travel trailer features oversized panoramic windows, the ever-popular U-dinette, which you can customize with the adjacent Versa-Lounge. The kitchen includes a 11 CU. FT. refrigerator and stovetop with oven and LED accents, plus cabinets for all your cooking essentials!



Hitch Weight	905 lb.	GVWR	9,865 lb.
UVW	8,573 lb.	CCC	1,292 lb.
Exterior Length	36' 7"	Exterior Height	11' 5"
Exterior Width	96"	Fresh Water	39 gal.
Gray Water	40 gal.	Black Water	27 gal.

Awning Size

18'

SPECIFICATIONS DEFINITIONS

GVWR (Gross Vehicle Weight Rating) – is the maximum permissible weight of the unit when fully loaded. It includes all weights, inclusive of all fluids, cargo, optional equipment and accessories. For safety and product performance do NOT exceed the GVWR.

GCWR (Gross Combined Weight Rating) – is the maximum permissible loaded weight of your motor home and any towed trailer or towed vehicle. Actual GCWR of this vehicle may be limited by the sum of the GVWR and the installed hitch receiver maximum capacity rating; see hitch rating label for detail.

GAWR (Gross Axle Weight Rating) – is the maximum permissible weight, including cargo, fluids, optional equipment and accessories that can be safely supported by a combination of all axles.

UVW (Unloaded Vehicle Weight)* – is the typical weight of the unit as manufactured at the factory. It includes all weight at the unit's axle(s) and tongue or pin and LP Gas. The UVW does not include cargo, fresh potable water, additional optional equipment or dealer installed accessories.

*Estimated Average based on standard build optional equipment.

CCC (Cargo Carrying Capacity) ** – is the amount of weight available for fresh potable water, cargo, additional optional equipment and accessories. CCC is equal to GVWR minus UVW. Available CCC should accommodate fresh potable water (8.3 lbs per gallon). Before filling the fresh water tank, empty the black and gray tanks to provide for more cargo capacity.

**Estimated Average based on standard build optional equipment.

Each Forest River RV is weighed at the manufacturing facility prior to shipping. A label identifying the unloaded vehicle weight of the actual unit and the cargo carrying capacity is applied to every Forest River RV prior to leaving our facilities.

The load capacity of your unit is designated by weight, not by volume, so you cannot necessarily use all available space when loading your unit.

Actual towing capacity is dependent upon your particular loading and towing circumstances, which includes the GVWR, GAWR and GCWR as well as adequate trailer brakes. Please refer to the Operator's Manual of your vehicle for further towing information.

Note: Specifications are subject to change without notice.

NEW FEATURES

- Retro/Metal Redesign
- 4K Blade Lighting
- JBL Speakers - Interior/Exterior
- 4K Awning Blade Lighting
- TFL Cabinet Doors
- Heavy Duty Cabinet Hinges
- Fold-Out Trash Can
- Versa-Range (N/A 27RE, 28VIEW & 32RET)
- Versa-Range Spice Rack (N/A 27RE, 28VIEW & 32RET)
- Stylish Backsplash Update
- Versa-Flex: Desk, Dinette & Chaise (Most Models)
- Lock & Groove Shiplap Islands (where applicable)
- Luminous Arched Radius Panels
- Expanded Kitchen Window
- Stylish Roller Shades
- Elegant Curtain Rods and Curtains
- Sleek Single Bowl Sink
- Pet Step in Bedroom
- Backlit Arched Radius Bathroom Mirror
- Revamped Bedroom Layout
- Enhanced Floating Shelves
- TFL Black Walnut Entertainment Shelf
- Pre-Installed TV Brackets (Living Area & Exterior)

BEST IN CLASS:

- Versa Furniture
- Stow N Go Storage Solution
- MORryde™ StepAbove Triple Step (Entry Door) (N/A 36VBDS)
- TFL Cabinet Doors
- Roof Mount Solar Prep
- Adjustable Textured Roller Shades
- Backlit Radius Bathroom Mirror
- Built-In Laundry Hamper in Bedroom
- Back-Up Camera Prep
- JBL Stereo
- Flush Floor Slide-Out w/Marine Grade Flooring

- Exterior Accent Lighting
- Dimmable Interior LED “Blade Lighting” (Living Area)
- Heated & Enclosed Accessibelly
- LED “Blade Lighting” Under Awning
- 60K On-Demand Tankless Water Heater
- Outside Shower
- 5/8” Tongue & Groove Plywood Floor Decking
- Tufflex™ PVC Roofing
- Powder Coated I-Beam Frame
- 3/8” Roof Decking (Walk-On)
- Cambered Chassis
- Nitrogen Filled Tires
- 2” Wall Construction
- 16” (or less) on Center
- Aerodynamic Front Radius Profile
- .040 Smooth Aluminum Front Cap
- 5” Bowed Truss Roof Rafters
- 2” x 3” Floor Joists 12” on Center
- 13 Ply Cross Micro-Laminated Beam Header Above Slide-Out
- Seamless Holding Tanks
- Color Coded Water Lines

OPTIONS:

- Platinum Package: Fiberglass Exterior, 200W Solar Panel w/30 AMP Controller (N/A 28DBUD)
- Spare Tire & Carrier
- 15,000 BTU A/C IPO Standard 13,500 BTU
- 50 AMP Service w/Wire & Brace for 2nd A/C (Forced 28VIEW, 29VIEW & 32VERANDA)
- 2nd 13.5k BTU Air Conditioner w/50 Amp Service
- Power Stabilizer Jack
- 200W Solar Panel w/30AMP Controller
- Dinette Booth IPO Versa Flex 27RE,27RK,32RET,33TS & 36VBDS
- U-Dinette Booth IPO Versa Flex 26DBUD, 26RBS, 28DBUD, 29BDB, 29VBUD, 31KQBTS & 32BHDS