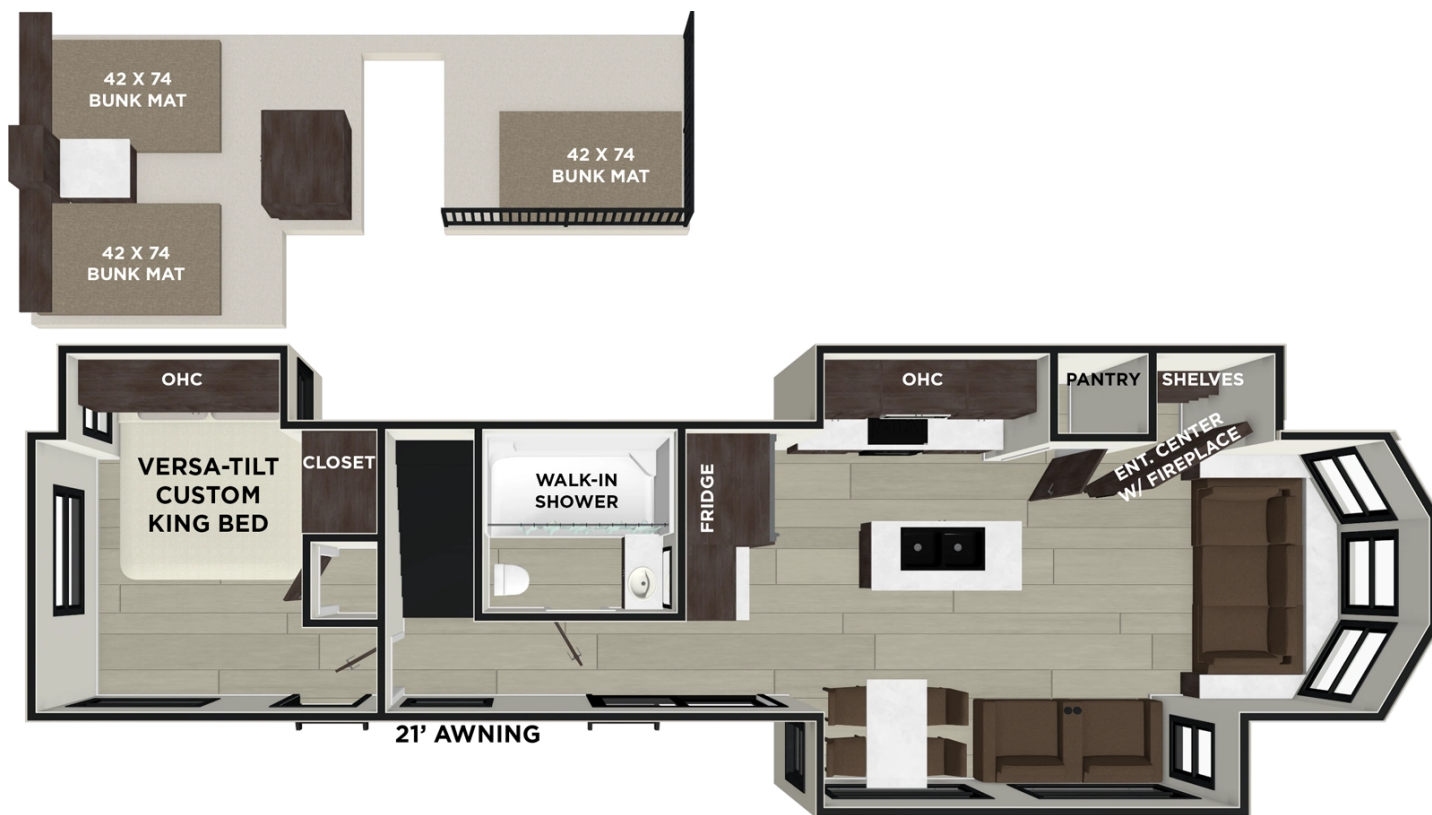


SALEM 42FLDL FLOORPLAN

The Salem Grand Villa 42FLDL is a truly outstanding home away from home. This model features a unique HUGE double loft bonus room with three bunks — perfect for bringing the kids (and maybe a few friends!) along. The bathroom includes a walk-in shower and lots of cupboard space, while the island kitchen provides residential appliances and plenty of room for the aspiring chefs in your family.



Hitch Weight	1,720 lb.	GVWR	13,720 lb.
UVW	12,209 lb.	CCC	1,511 lb.
Exterior Length	41' 7"	Exterior Height	13' 3"
Exterior Width	102"	Fresh Water	40 gal.
Gray Water	80 gal.	Black Water	40 gal.
Awning Size	21'		

SPECIFICATIONS DEFINITIONS

GVWR (Gross Vehicle Weight Rating) – is the maximum permissible weight of the unit when fully loaded. It includes all weights, inclusive of all fluids, cargo, optional equipment and accessories. For safety and product performance do NOT exceed the GVWR.

GCWR (Gross Combined Weight Rating) – is the maximum permissible loaded weight of your motor home and any towed trailer or towed vehicle. Actual GCWR of this vehicle may be limited by the sum of the GVWR and the installed hitch receiver maximum capacity rating; see hitch rating label for detail.

GAWR (Gross Axle Weight Rating) – is the maximum permissible weight, including cargo, fluids, optional equipment and accessories that can be safely supported by a combination of all axles.

UVW (Unloaded Vehicle Weight)* – is the typical weight of the unit as manufactured at the factory. It includes all weight at the unit's axle(s) and tongue or pin and LP Gas. The UVW does not include cargo, fresh potable water, additional optional equipment or dealer installed accessories.

*Estimated Average based on standard build optional equipment.

CCC (Cargo Carrying Capacity) ** – is the amount of weight available for fresh potable water, cargo, additional optional equipment and accessories. CCC is equal to GVWR minus UVW. Available CCC should accommodate fresh potable water (8.3 lbs per gallon). Before filling the fresh water tank, empty the black and gray tanks to provide for more cargo capacity.

**Estimated Average based on standard build optional equipment.

Each Forest River RV is weighed at the manufacturing facility prior to shipping. A label identifying the unloaded vehicle weight of the actual unit and the cargo carrying capacity is applied to every Forest River RV prior to leaving our facilities.

The load capacity of your unit is designated by weight, not by volume, so you cannot necessarily use all available space when loading your unit.

Actual towing capacity is dependent upon your particular loading and towing circumstances, which includes the GVWR, GAWR and GCWR as well as adequate trailer brakes. Please refer to the Operator's Manual of your vehicle for further towing information.

Note: Specifications are subject to change without notice.

NEW FEATURES

- Retro/Metal Redesign (N/A 42VERADNDA, 42VIEW & 44VIEW)
- Lippert On-the-Go Ladder Pre
- JBL Speakers – Interior/Exterior
- 4K Awning Blade Lighting
- Lock & Groove Shiplap Islands (where applicable)
- TFL Cabinet Doors
- Heavy Duty Cabinet Hinges
- Hidden Pantry Door (40RLB, 42DL & 42FLDL)
- Updated Bar Stools (where applicable)
- Stylish Backsplash Updat
- Modern Headboard Redesign
- Elegant Curtain Rods & Curtains
- Stylish Roller Shades
- Enhanced Floating Shelves
- TFL Black Walnut Entertainment Shelves
- JBL 3-Zone Media Center
- Versa-Sink
- 4K Blade Lighting

BEST IN CLASS:

- VILLA&/strong;
- 1.6 Cu Ft Oversized Residential Microwave
- 7'9"; Slide-Out Height (Living Area)
- Adjustable Textured Roller Shades
- JBL Stereo
- Dimmable Interior LED "Blade Lighting" (Living Area)
- Heated & Enclosed Accessibelly
- LED "Blade Lighting" Under Awning
- Rainfall Versa-Sink in Kitchen
- Serta Mattress in Bedroom(s)
- Stainless Steel Kitchen Appliances
- Versa-Tilt Bed
- Slide-Out Awning Toppers (N/A 40ZZZ)
- Soft Close Drawer Guides
- 60K On-Demand Tankless Water Heater
- 5/8" Tongue & Groove Plywood Floor Decking
- 2"76; Wall Construction
- 16" (or less) on Center
- 5" Bowed Truss Roof Rafters
- 3/8" Roof Decking (Walk-On)
- Tufflex™ PVC Roofing
- Fender Skirt

- Fiberglass Insulation Throughout
- 96 Interior Height
- 30" Radius Fiberglass Door
- Cambered Chassis
- 2" x 3" Floor Joists
12" on Center
- 84" Tall Slide-Out Rooms
- 12" Forged I-Beam Frame
(Powder Coated)
- Seamless Holding Tanks
- Color Coded Water Lines
- **GRAND
VILLA**
- 1.6 Cu Ft Oversized Residential
Microwave
- Adjustable Textured Roller
Shades
- JBL Stereo
- Dimmable Interior LED
"Blade Lighting"
(Living Area)
- Heated & Enclosed
Accessibelly
- LED "Blade
Lighting" Under Awning
- Rainfall Versa-Sink in Kitchen
- Serta Mattress in Bedroom(s)
- Stainless Steel Kitchen
Appliances
- Versa-Tilt Bed
- Slide-Out Awning Toppers (N/A
42ICE)
- Soft Close Drawer Guides
- 60K On-Demand Tankless Water
Heater

- 5/8" Tongue & Groove Plywood Floor Decking
- 2" Wall Construction
- 16" (or less) on Center
- 5" Bowed Truss Roof Rafters
- 3/8" Roof Decking (Walk-On)
- Tufflex™ PVC Roofing
- Fender Skirt
- Fiberglass Insulation Throughout
- 106" Interior Height (Living Room)
- 30" Radius Fiberglass Door
- Cambered Chassis
- 2" x 2" Floor Joists 12" on Center
- 84" Tall Slide-Out Rooms
- 12" Forged I-Beam Frame (Powder Coated)
- Seamless Holding Tanks
- Color Coded Water Lines

OPTIONS:

- VILLA
- Solid Surface Countertops (Forced)
- 40" HD TV
- Detachable Hitch
- Non-Self Contained w/China House Toilet (No Tanks)*(N/A 2nd Bath 42DMS&42QBQ)
- Gel Coat Exterior Fiberglass
- Stab Jacks (6)
- Outside Shower

- Extreme Weather Package
(Calculated R-38 Reflective Foil
in Roof & Floor)
- 2nd 15k BTU A/C in Bedroom
- GRAND
VILLA
- Solid Surface Countertops (N/A
42ICE)
- Detachable Hitch (N/A 42DL,
42VERANDA, 42VIEW or
44VIEW)
- Gel Coat Exterior Fiberglass
(STD on 42VERANDA, 42VIEW
& 44VIEW)
- Washer/Dryer Prep (STD on
42VERANDA, 42VIEW & 44VIEW)
- Non-Self Contained w/China
House Toilet (No Tanks)
- Stab Jacks (6)
- Outside Shower
- Extreme Weather Package
(Calculated R-38 Reflective Foil
in Roof & Floor)