

# 700 P

Dozer



JOHN DEERE



# PACKED TO POWER YOUR PRODUCTIVITY

When you work in site development, roadbuilding, or aggregates, you need to get the most from your equipment and your operators. We've relied on input from real-world customers like you to design and manufacture our dozers for nearly 75 years. The John Deere 700 P-Tier features some of your best ideas, like generous horsepower, reliable systems and components, and flexible grade-control solutions that can be easily and economically upgraded. And because retaining skilled and productive operators is a priority, we've made the operating experience a main attraction of what the 700 P-Tier Dozer has to offer.

---

## Take control in comfort

Designed to elevate operator comfort, the next-generation cab features ergonomic controls arranged to minimize hand and arm movements, advanced touchscreen displays with configurable settings, and optional automatic temperature control (ATC) system. Both the standard deluxe fabric-covered seat and optional premium leather-accented heated/ventilated seat are angled to maximize comfort when making ripping passes.

## Put progress on display

Standard on electrohydraulic configurations, eight-inch touchscreen primary display reveals machine health and configurable settings plus rearview (backup) camera (if equipped). Secondary 12.8-inch display for navigating the grade-control interface is added when the machine is outfitted with SmartGrade™ Ready Including 2D Grade Control.

## Be aware of what's there

To enhance awareness for confident navigation of busy work areas, optional rearview (backup) camera helps the operator see what's behind the dozer on the in-cab monitor. Optional Advanced Vision System (AVS) includes two digital cameras mounted on the exterior left and right cab-light brackets plus an additional camera mounted to the front grille that integrate with the rearview (backup) camera for a single display on a dedicated in-cab monitor.

## Lead the way

Unlike many competitive machines featuring four-cylinder engines, the 700 P-Tier runs a fuel-efficient six-cylinder 6.8L engine that delivers the highest horsepower in its size class. And it also has the largest blade capacity in its size class.





## GRADE-MANAGEMENT SOLUTIONS

Our suite of factory-integrated grade-management technologies including standard EZ Grade and optional SmartGrade Ready Including 2D Grade Control, SmartGrade with Topcon, and SmartGrade with Leica simplify difficult grading tasks. These intuitive offerings are easy for operators of any experience level to master. All technology solutions are fully supported by the John Deere dealer network and can be efficiently upgraded as your operation evolves:

- **EZ Grade** aids operators in manually grading smooth finish passes by making small blade corrections automatically.
- **SmartGrade Ready Including 2D Grade Control** includes entry-level slope-control solutions and plug-and-play laser. Slope control assists in grading and maintaining flat, smooth, and sloping surfaces. Operators can view and set blade slope while the system automatically controls the blade to a desired slope. SmartGrade Ready also recognizes plugged-in laser receivers and activates the plug-and-play laser that enables operators to automatically control the blade to a specific slope and elevation using a rotating laser.
- Fully integrated **SmartGrade** features next-generation components and integration, enabling the highest levels of productivity and grading performance. SmartGrade is available in your choice of Topcon or Leica packages. SmartGrade enhancements for jobsites requiring tighter tolerances or with limited GNSS coverage include capabilities for integrated total-station control.
- **Electrohydraulic (EH) controls** make it easy to add the grade-control system of your choice.



GRADE-MANAGEMENT OPTIONS  
**STREAMLINE GRADING  
TASKS & LEARNING CURVES**

### Turn, turn, turn

Independent track control speeds up or slows down each side, for smooth, full-power turns. Automatic power boost helps carry big blade loads through turns.

### All about the blade

Integrated welded-on spill sheet on the 700 P-Tier blade helps reduce damage caused by material spillage behind the blade.

### Hydrostatic dynamics

The John Deere hydrostatic system simplifies operation and redefines durability. Each track has its own independent hydrostatic pump and motor, and the blade and ripper functions have their own independent hydraulic pump, allowing both transmission and hydraulic operating characteristics to be tailored to individual preference without sacrificing hydraulic speed. And heavy loads can be carried through turns and counter-rotations while the dozer is in gear or neutral.

### Tough to take it on

The 700 P-Tier retains the thick sheet metal and heavy-duty mainframe of its proven 700L predecessor. A durable heavy-duty undercarriage comes standard. Or opt for Extended Life undercarriage with SC-2™-treated bushings, a proven parts coating that delivers up to twice the wear life. Maximum Life undercarriage, with larger components and stronger seals, is also available.

### At your service

Simplified routing of the electrical and hydraulic systems is designed for reliability and ease of maintenance. Enlarged service doors provide quick access to conveniently located checkpoints and filters. Hydraulic and hydrostatic oil-change intervals extended from 2,000 to 4,000 hours help further minimize maintenance and expense.



**INTEGRATED SPILL SHEET  
REDUCES BLADE DAMAGE  
FROM MATERIAL SPILLAGE**



## 700 P-TIER DOZER



### Clear the way

Factory-installed limb risers and screens allow you to put this versatile dozer to work in forestry, land-clearing, and other challenging applications.

### Connected machines

John Deere construction equipment comes with in-base connectivity — free from subscriptions or annual renewals. Analyze critical machine data, track utilization, review diagnostic alerts, and more from **the John Deere Operations Center™**. The Operations Center also enables John Deere Connected Support™, which uses data from thousands of connected machines to proactively address issues before they arise. With your approval, your dealer can also remotely monitor machine health, diagnose problems, and even update machine software without a trip to the jobsite.\*

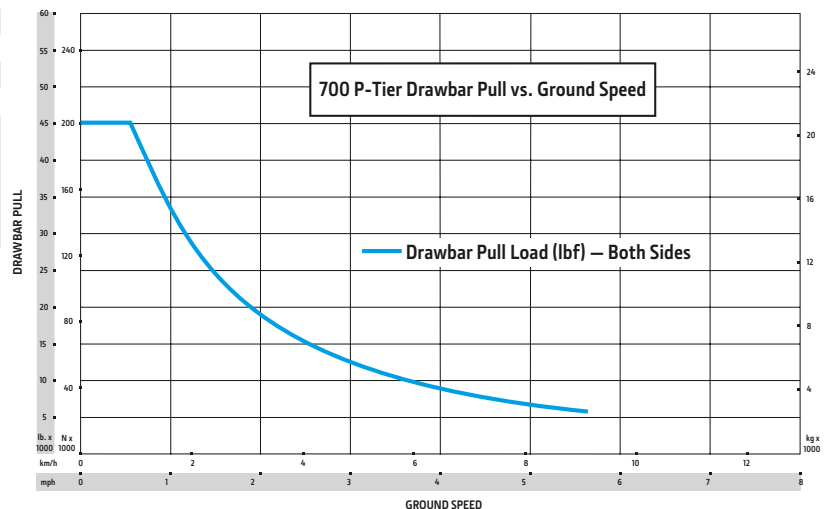
\* Availability varies by region and product. Options not available in every country.





While general information, pictures, and descriptions are provided, some illustrations and text may include product options and accessories NOT AVAILABLE in all regions, and in some countries products and accessories may require modifications or additions to ensure compliance with the local regulations of those countries.

<b>Engine</b>	<b>700 P-TIER XLT / 700 P-TIER LGP</b>
<b>Blade Type</b>	<b>Power-Angle-Tilt (PAT)</b>
Manufacturer and Model	John Deere PowerTech™ PVS 6068
Non-Road Emission Standard	EPA Final Tier 4/EU Stage V
Displacement	6.8L (414 cu. in.)
SAE Net Rated Power	101 kW (135 hp) at 1,800 rpm
Aspiration	Turbocharged with charge-air cooler
Air Cleaner	Dual-stage dry tube with tangential unloader
<b>Cooling</b>	
Type	Variable-speed suction fan with optional reversing feature
Engine Coolant Rating	−37 deg. C. (−34 deg. F)
Engine Radiator	10 fins per in.
<b>Powertrain</b>	
<b>Transmission</b>	Automatic, dual-path, hydrostatic (HST) drive; load-sensing feature automatically adjusts speed and power to match changing load conditions; each individually controlled track is powered by a variable-displacement piston pump and motor combination; ground-speed selection buttons on single-lever steering and direction control; reverse speed ratio is fully operator customizable; decelerator pedal provides infinite speed control from full speed to complete stop
System Relief Pressure	47 573 kPa (6,900 psi)
<b>Travel Speeds</b>	
Forward and Reverse	8.9 km/h (5.5 mph)
Maximum (optional)	9.7 km/h (6.0 mph)
<b>Steering</b>	Single-lever steering, speed, direction control, and counter-rotation; full power turns and infinitely variable track speeds provide unlimited maneuverability and optimum control; HST steering eliminates steering clutches and brakes
<b>Final Drives</b>	Triple-reduction final drives mounted independently of track frames and dozer push frames for isolation from shock loads
Total Ratio	33.59 to 1
<b>Drawbar Pull</b>	
Maximum	200 kN (45,050 lb.)
At 1.9 km/h (1.2 mph)	131 kN (29,500 lb.)
At 3.2 km/h (2.0 mph)	83 kN (18,600 lb.)
<b>Brakes</b>	
Service	HST (dynamic) braking stops the machine whenever the direction-control lever is moved to neutral or the decelerator is depressed to the detent
Parking	Exclusive safety feature engages wet, multiple-disc brakes whenever the engine stops, the decelerator is depressed to the end of travel, or motion is detected while the transmission control is in neutral; machine cannot be driven with brake applied, minimizing wearout; spring applied, hydraulic release
<b>Hydraulics</b>	
Type	Open-center hydraulic system with fixed-displacement gear pump
Pump Displacement	47.5 cc
System Relief Pressure	22 063 kPa (3,200 psi)
Maximum Flow at Unloaded High Idle	95 L/m (25 gpm)
Control	3-function electrohydraulic (EH) joystick with proportional roller-angle function
<b>Electrical</b>	
Voltage	24 volts
<b>Capacity</b>	
Battery	950 CCA
Reserve	175 min.



## 700 P-TIER DOZER SPECIFICATIONS

# 700

# P

While general information, pictures, and descriptions are provided, some illustrations and text may include product options and accessories NOT AVAILABLE in all regions, and in some countries products and accessories may require modifications or additions to ensure compliance with the local regulations of those countries.

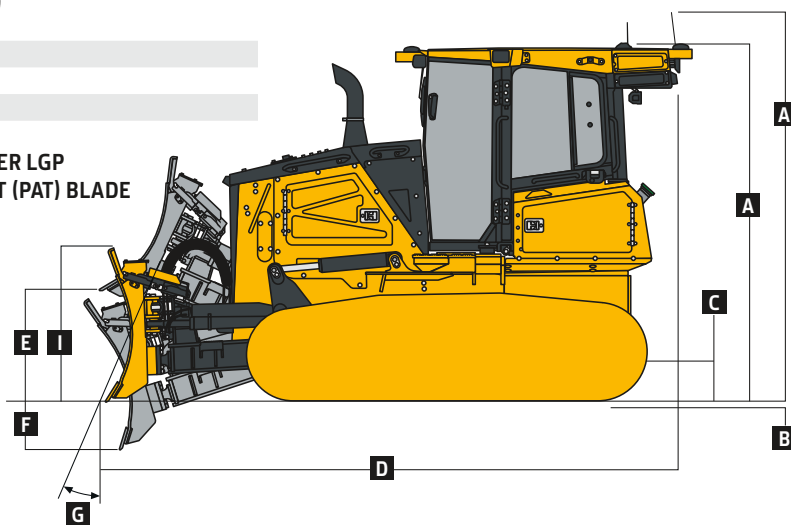
Electrical (continued)	700 P-TIER XLT / 700 P-TIER LGP			
Blade Type	PAT			
Alternator Rating				
Cab	145 amp			
Canopy	110 amp			
Lights				
LED	Cab-mounted front (2) and cab-mounted rear (2)			
Premium LED	Cab-mounted front (4) and cab-mounted rear (4)			
Undercarriage	700 P-TIER XLT		700 P-TIER LGP	
Tracks	John Deere features large deep-heat-treated components; pins and bushings are sealed for life; rollers and idlers are permanently sealed and lubricated; sprockets are segmented; full-length track-frame covers reduce material buildup and ease cleaning			
Track Gauge	1778 mm (70 in.)	1778 mm (70 in.)	1981 mm (78 in.)	1981 mm (78 in.)
Grouser Width	559 mm (22 in.)	559 mm (22 in.)	760 mm (30 in.)	760 mm (30 in.)
Chain	Sealed and lubricated	Sealed and lubricated	Sealed and lubricated	Sealed and lubricated
Shoes, Each Side	39	39	39	39
Track Rollers, Each Side	7	7	7	7
Track Length on Ground	2615 mm (103 in.)	2615 mm (103 in.)	2615 mm (103 in.)	2615 mm (103 in.)
Ground Contact Area	32 569 cm² (5,048 sq. in.)	32 569 cm² (5,048 sq. in.)	44 201 cm² (6,851 sq. in.)	44 201 cm² (6,851 sq. in.)
Ground Pressure	42.2 kPa (6.12 psi)	42.3 kPa (6.14 psi)	32.1 kPa (4.66 psi)	32.3 kPa (4.68 psi)
Track Pitch	191 mm (7.5 in.)	191 mm (7.5 in.)	191 mm (7.5 in.)	191 mm (7.5 in.)
Oscillation at Front Roller	±94 mm (±3.7 in.)	±94 mm (±3.7 in.)	±94 mm (±3.7 in.)	±94 mm (±3.7 in.)
Operator Station	700 P-TIER XLT / 700 P-TIER LGP			
ROPS (ISO 3471 – 2008) and FOPS (ISO 3449 – 2005) Level II				
Serviceability				
Refill Capacities				
Fuel Tank With Lockable Cap	262 L (69.2 gal.)			
Diesel Exhaust Fluid (DEF) Tank	14.2 L (3.8 gal.)			
Cooling System With Recovery Tank	31.4 L (8.3 gal.)			
Engine Oil With Filter	28 L (7.4 gal.)			
Transmission/Hydraulic Reservoir With Filter	102 L (26.9 gal.)			
Operating Weights	700 P-TIER XLT		700 P-TIER LGP	
Base Weight (with standard equipment, rollover protective structures [ROPS], full fuel tank, and 79-kg [175 lb.] operator)	14 016 kg (30,900 lb.)	14 049 kg (30,973 lb.)	14 489 kg (31,943 lb.)	14 555 kg (32,088 lb.)
Optional Components				
Cab With Pressurizer and Heater/Air Conditioner	230 kg (507 lb.)	230 kg (507 lb.)	230 kg (507 lb.)	230 kg (507 lb.)
Rear Screen				
ROPS Canopy	28 kg (62 lb.)	28 kg (62 lb.)	28 kg (62 lb.)	28 kg (62 lb.)
Cab With Air Conditioner	49 kg (108 lb.)	49 kg (108 lb.)	49 kg (108 lb.)	49 kg (108 lb.)
Screens – Full Enclosure, Cab With Air Conditioner	219 kg (483 lb.)	219 kg (483 lb.)	219 kg (483 lb.)	219 kg (483 lb.)
Limb Risers (ROPS canopy and cab)	182 kg (401 lb.)	182 kg (401 lb.)	182 kg (401 lb.)	182 kg (401 lb.)
Heavy-Duty Grille	13 kg (29 lb.)	13 kg (29 lb.)	13 kg (29 lb.)	13 kg (29 lb.)
Counterweight				
Front	144 kg (317 lb.)	144 kg (317 lb.)	144 kg (317 lb.)	144 kg (317 lb.)
Rear	468 kg (1,032 lb.)	468 kg (1,032 lb.)	468 kg (1,032 lb.)	468 kg (1,032 lb.)
Retrieval Hitch	31 kg (68 lb.)	31 kg (68 lb.)	31 kg (68 lb.)	31 kg (68 lb.)
Drawbar, Extended Rigid	93 kg (205 lb.)	93 kg (205 lb.)	93 kg (205 lb.)	93 kg (205 lb.)
Winch	652 kg (1,437 lb.)	652 kg (1,437 lb.)	652 kg (1,437 lb.)	652 kg (1,437 lb.)
Fairlead, 4 Roller	85 kg (187 lb.)	85 kg (187 lb.)	85 kg (187 lb.)	85 kg (187 lb.)
Full-Length Rock Guards	155 kg (342 lb.)	155 kg (342 lb.)	155 kg (342 lb.)	155 kg (342 lb.)
Maximum Life Undercarriage	211 kg (465 lb.)	211 kg (465 lb.)	211 kg (465 lb.)	211 kg (465 lb.)
Track Shoes				
559 mm (22 in.)	In base	In base	–507 kg (–1,118 lb.)	–507 kg (–1,118 lb.)
610 mm (24 in.)	—	—	–392 kg (–864 lb.)	–392 kg (–864 lb.)
760 mm (30 in.)	—	—	In base	In base

# 700 P-TIER

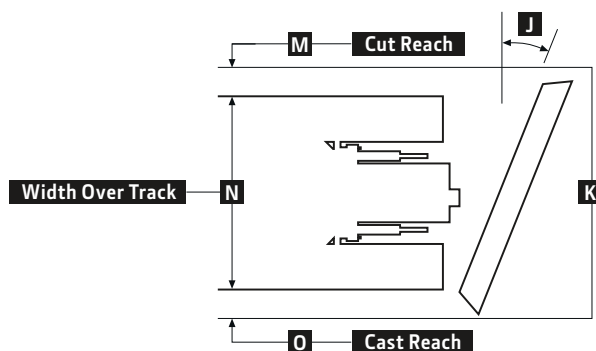
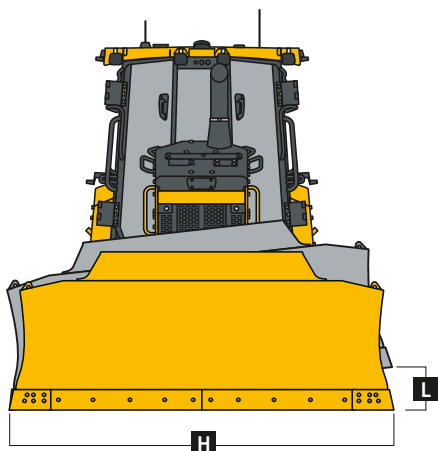
While general information, pictures, and descriptions are provided, some illustrations and text may include product options and accessories NOT AVAILABLE in all regions, and in some countries products and accessories may require modifications or additions to ensure compliance with the local regulations of those countries.

Machine Dimensions	700 P-TIER XLT / 700 P-TIER LGP
<b>Blade Type</b>	<b>Power-Angle-Tilt (PAT)</b>
<b>A</b> Overall Height to Roof (includes antenna base)	3047 mm (10 ft. 0 in.)
<b>A'</b> Overall Height With Limb Risers	3138 mm (10 ft. 4 in.)
<b>B</b> Tread Depth With Single-Bar Grouser	56 mm (2.2 in.)
<b>C</b> Ground Clearance in Dirt	387 mm (15.2 in.)
<b>D</b> Overall Length	4906 mm (193 in.) (16 ft. 1 in.)
<b>D'</b> Overall Length With Extended Drawbar	5078 mm (200 in.) (16 ft. 8 in.)
<b>D''</b> Overall Length With Extended Drawbar and Rear Counterweight	5205 mm (205 in.) (17 ft. 1 in.)
<b>D'''</b> Overall Length With Winch and Fairlead Rollers	5474 mm (216 in.) (18 ft. 0 in.)
<b>E</b> Blade Lift Height	977 mm (38 in.) (3 ft. 2 in.)
<b>F</b> Blade Digging Depth	536 mm (21 in.)
<b>G</b> Blade Cutting Edge Angle, Adjustable	51.2 to 58.3 deg.

700 P-TIER XLT / 700 P-TIER LGP  
WITH POWER-ANGLE-TILT (PAT) BLADE



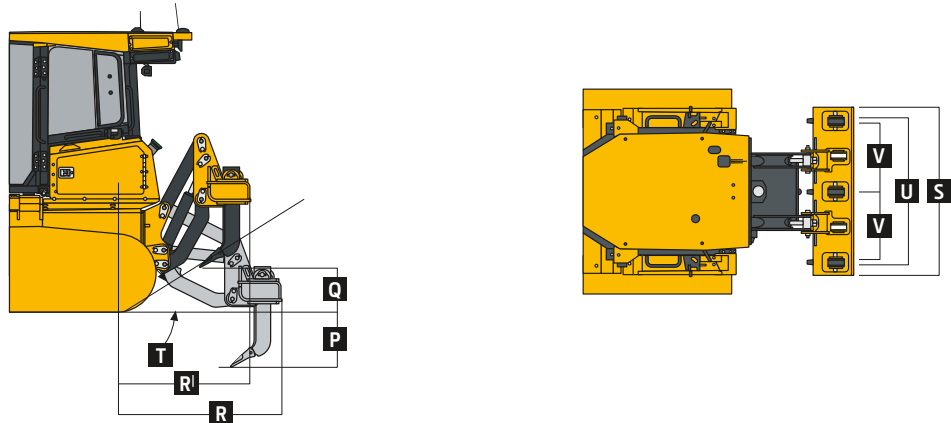
Machine Dimensions <i>(continued)</i>		700 P-TIER XLT		700 P-TIER LGP	
Straight					
H	Blade Width	3077 mm (121 in.) (10 ft. 1 in.)	3231 mm (127 in.) (10 ft. 7 in.)	3383 mm (133 in.) (11 ft. 1 in.)	3688 mm (145 in.) (12 ft. 1 in.)
I	Blade Height	1322 mm (52 in.) (4 ft. 4 in.)	1322 mm (52 in.) (4 ft. 4 in.)	1322 mm (52 in.) (4 ft. 4 in.)	1322 mm (52 in.) (4 ft. 4 in.)
	SAE Capacity	3.4 m³ (4.4 cu. yd.)	3.5 m³ (4.6 cu. yd.)	3.6 m³ (4.8 cu. yd.)	3.9 m³ (5.1 cu. yd.)
	Weight	811 kg (1,788 lb.)	844 kg (1,861 lb.)	875 kg (1,929 lb.)	941 kg (2,075 lb.)
	C-Frame Assembly Weight (without blade)	803 kg (1,770 lb.)	803 kg (1,770 lb.)	803 kg (1,770 lb.)	803 kg (1,770 lb.)
J	Blade Angle	25 deg.	25 deg.	25 deg.	25 deg.
K	Overall Width With Blade Angled	2808 mm (111 in.) (9 ft. 3 in.)	2912 mm (115 in.) (9 ft. 7 in.)	3049 mm (120 in.) (10 ft. 0 in.)	3324 mm (131 in.) (10 ft. 11 in.)
L	Blade Tilt	426 mm (17 in.)	447 mm (18 in.)	468 mm (18 in.)	510 mm (20 in.)
M	Cut Reach	0 mm (0 in.)	64 mm (3 in.)	133 mm (5 in.)	270 mm (11 in.)
N	Width Over Track	2338 mm (92 in.) (7 ft. 8 in.)	2338 mm (92 in.) (7 ft. 8 in.)	2741 mm (108 in.) (9 ft. 0 in.)	2741 mm (108 in.) (9 ft. 0 in.)
O	Cast Reach	441 mm (17 in.)	510 mm (20 in.)	378 mm (15 in.)	515 mm (20 in.)



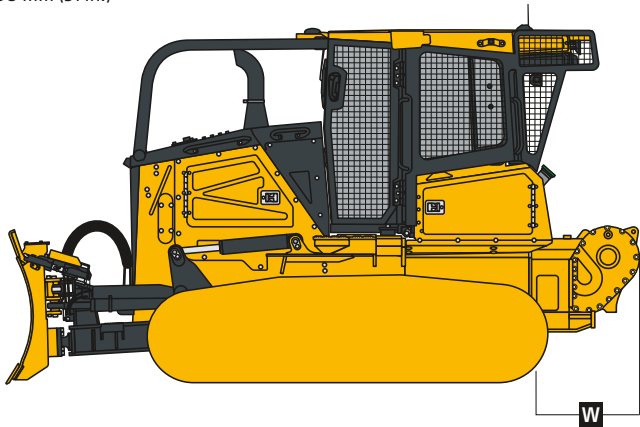
While general information, pictures, and descriptions are provided, some illustrations and text may include product options and accessories NOT AVAILABLE in all regions, and in some countries products and accessories may require modifications or additions to ensure compliance with the local regulations of those countries.

700 P-TIER

Rear Ripper		700 P-TIER XLT / 700 P-TIER LGP
Blade Type		PAT
Multi-shank parallelogram ripper with 5 pockets and 3 shanks		
Weight		1444 kg (3,183 lb.)
P	Maximum Penetration	563 mm (22 in.)
Q	Maximum Clearance Under Tip	584 mm (23 in.)
R	Overall Length, Lowered Position	1494 mm (59 in.) (4 ft. 11 in.)
R <sup>I</sup>	Overall Length, Raised Position	1210 mm (48 in.) (4 ft. 0 in.)
S	Overall Beam Width	1930 mm (76 in.) (6 ft. 4 in.)
T	Slope Angle (full raise)	26 deg.
U	Ripping Width	1673 mm (66 in.) (5 ft. 6 in.)
V	Distance Between Shanks	806 mm (32 in.)



4000S Winch		700 P-TIER XLT / 700 P-TIER LGP
W	Winch Length	798 mm (31 in.)



# Additional equipment

Key: ● Standard ▲ Optional or special

See your John Deere dealer for further information.

700	
P-TIER	Engine
●	Meets EPA Final Tier 4/EU Stage V emissions
●	John Deere PowerTech™ PVS 6068 6.8L engine
●	Wet-sleeve cylinder liners
●	Eco mode
▲	Exhaust stack, black
▲	Exhaust stack, chrome
●	Turbocharged and air-to-air after-cooled
●	Dual-element dry-canister air cleaner
●	Engine glow-plug starting system
●	Programmable auto engine shutdown
●	Automatic turbo cool-down timer
●	Exhaust filter, under hood, with vertical stack
●	Fuel filters with automatic electronic priming
▲	Severe-duty fuel filter
▲	Engine coolant heater, 120 volt
●	110-amp alternator (canopy)
●	145-amp alternator (cab)
Cooling	
●	Hydraulically driven cooling fan, variable-speed suction type
●	Engine cooling rated –37 deg. C (–34 deg. F)
▲	Automatic, programmable reversing fan

700	
P-TIER	Cooling (continued)
●	Engine radiator, hydrostatic (HST) cooler, and hydraulic cooler, 10 fins per inch
●	Enclosed safety fan guard (conforms to SAE J1308 and ISO 3457)
●	Single-plane non-stacked cooler design
Powertrain	
●	Dual-path HST transmission
●	Reverse-speed ratios (100%, 115%, and 130% presets or operator defined)
●	Operator-selectable decelerator function (hydrostats and engine or hydrostats only)
●	Single-lever steering with counter-rotate function
●	Full power turns with infinitely variable track speed
●	HST (dynamic) service brakes
●	Wet, multi-disc parking brake
●	Remote diagnostic test ports
●	Automatic cold-weather transmission warmup system
●	Automatic transmission derating for exceeded system temperatures
Hydraulic System	
●	Electrohydraulic (EH) system with fixed-displacement hydraulic gear pump
●	3-spool EH control valve for Power-Angle-Tilt (PAT)

700	
P-TIER	Hydraulic System (continued)
▲	4-spool EH control valve for PAT with single auxiliary
●	Electrohydraulics with EZ Grade
●	Hydrau™ All-Season Hydraulic Oil, –25 deg. C to 50 deg. C (–13 deg. F to 122 deg. F)
▲	Hydrau™ XR Hydraulic Oil, –40 deg. C to 40 deg. C (–40 deg. F to 104 deg. F)
●	Hydraulic pump, standard
▲	Hydraulic pump for direct-drive winch
Precision Construction Solutions	
▲	John Deere G5 Plus 325-mm (12.8 in.) touchscreen dedicated grade-control display
▲	SmartGrade™ Ready Including 2D Grade Control system
▲	SmartGrade with Topcon
▲	SmartGrade with Leica
Undercarriage	
●	Full-length, smooth-surface track frame covers
●	Double-flange rollers
●	Oscillating undercarriage
●	Maximum Life undercarriage system
▲	Heavy-duty sealed and lubricated undercarriage
▲	Extended Life undercarriage with SC-2™ bushings
▲	Full-length rock guards

While general information, pictures, and descriptions are provided, some illustrations and text may include product options and accessories NOT AVAILABLE in all regions, and in some countries products and accessories may require modifications or additions to ensure compliance with the local regulations of those countries.

Net engine power is with standard equipment including air cleaner, exhaust system, alternator, and cooling fan at test conditions specified per ISO9249. No derating is required up to 3050-m (10,000 ft.) altitude. Also available: winches, fair-leads, log arches, skidding grapples, trash packages, landfill protection packages, cable plows, side booms, field-installed cab for canopy, canopy heater, and fire-suppression systems. Specifications and design subject to change without notice. Wherever applicable, specifications are in accordance with SAE standards. Except where otherwise noted, these specifications are based on a unit with ROPS, full fuel tank, and 79-kg (175 lb.) operator. Operator station ROPS and FOPS certified.

# Additional equipment *(continued)*

Key: ● Standard ▲ Optional or special

See your John Deere dealer for further information.

700	
P-TIER	Operator's Station
▲	Canopy cab with under-seat heater
▲	Enclosed cab with air/heat
▲	Automatic temperature control (ATC) system
●	Standard seat, vinyl with heavy-duty air suspension (canopy)
●	Deluxe seat, cloth with heavy-duty air-suspension (cab)
▲	Premium seat, leather-accented, heated and ventilated, with heavy-duty air-suspension (cab)
●	Under-seat heater (canopy)
●	AM/FM/Weather-Band (WB) radio with front auxiliary (cab)
▲	Premium radio with Bluetooth®, AM/FM/WB radio, remote auxiliary, and remote USB port (cab)
●	203-mm (8 in.) touchscreen multifunction/multilanguage color LCD monitor: Tachometer, hour meter, transmission direction and speed (forward/reverse), exhaust filter status, ambient temperature, and clock
●	Built-in diagnostics: Diagnostic-code details / Sensor values / Calibrations / Individual circuit tester
●	Backup alarm
▲	Advanced Vision System with dedicated display

700	
P-TIER	Operator's Station <i>(continued)</i>
▲	Rearview camera
●	12-volt accessory plug (1)
▲	Additional 12-volt accessory plug
●	Keyless start with multiple security codes
●	Retractable seat belt, 76 mm (3 in.) (conforms to SAE J368)
▲	Fire extinguisher mounting bracket
▲	External-mounted rear-attachment mirror (cab)
●	Front, door, and rear wipers and washers (cab)
Overall Vehicle	
●	Environmental drain package
▲	Fluid-sample ports
●	JDLINK™ wireless machine communication system (available in specific countries; see your local dealer for details)
▲	Quick service ports (HST, hydraulic, and engine oil, and coolant)
●	LED lights (configuration dependent on cab-trim package)
▲	Premium LED lights (configuration dependent on cab-trim package)
▲	Engine-compartment light
▲	Beacon light

700	
P-TIER	Overall Vehicle <i>(continued)</i>
▲	Heavy-duty grille
▲	Final-drive trash guards (waste applications)
▲	Full screens for cab
▲	Rear window screen
▲	Forestry limb risers (sweeps)
●	Lockable master electrical disconnect switch
Attachments	
▲	Rear ripper, parallelogram, 3 shank
▲	Counterweight, front, 144 kg (317 lb.)
▲	Single rear counterweight
▲	Retrieval hitch with pin
▲	Retrieval hitch with 1 counterweight
▲	Extended rigid drawbar
▲	Extended rigid drawbar with 1 counterweight
▲	Winch, John Deere 4000S, power in/free spool out OR power out
▲	4-roller fairlead for winch
XLT	LGP 700 P-Tier Shoes
●	▲ 559-mm (22 in.) moderate service
	▲ 610-mm (24 in.) moderate service
	● 760-mm (30 in.) moderate service

While general information, pictures, and descriptions are provided, some illustrations and text may include product options and accessories NOT AVAILABLE in all regions, and in some countries products and accessories may require modifications or additions to ensure compliance with the local regulations of those countries.

Net engine power is with standard equipment including air cleaner, exhaust system, alternator, and cooling fan at test conditions specified per ISO9249. No derating is required up to 3050-m (10,000 ft.) altitude. Also available: winches, fair-leads, log arches, skidding grapples, trash packages, landfill protection packages, cable plows, side booms, field-installed cab for canopy, canopy heater, and fire-suppression systems. Specifications and design subject to change without notice. Wherever applicable, specifications are in accordance with SAE standards. Except where otherwise noted, these specifications are based on a unit with ROPS, full fuel tank, and 79-kg (175 lb.) operator. Operator station ROPS and FOPS certified.



MD700PAU (25-03)



**JOHN DEERE**