

# JOHN DEERE NUTRIENT APPLICATION EQUIPMENT



JOHN DEERE







# BUILT FOR YOUR APPLICATIONS

Dry, liquid, or anhydrous. Pre-plant, in-season, or fall. Surface application or incorporated. No matter the timing, product, or method, John Deere has your nutrient application needs covered, with one of the most complete and capable lines of application equipment available, as well as the tractors, precision solutions, and dealer support you can count on when time gets tight.

**To find out more, visit your John Deere dealer, or visit us online.**

[JohnDeere.com/Apply](http://JohnDeere.com/Apply) • [JohnDeere.ca/Apply](http://JohnDeere.ca/Apply) • [JohnDeere.ca/Application](http://JohnDeere.ca/Application)



*John Deere is a proud partner of the 4R nutrient stewardship program, an innovative and science-based approach that offers enhanced environmental protection, increased production, increased farmer profitability, and improved sustainability – using the right fertilizer source, at the right rate, at the right time, with the right placement.*





## CONTENTS

2430C Nutrient Applicator .....	4-5
TruSet™ Depth Control.....	6
Solutions For Strip-Till .....	7
2510H High-Speed Nutrient Applicator.....	8-9
2510H with Dry Applicator .....	10-11
2510L Liquid Applicator .....	12-13
2530L Liquid Applicator.....	14-15
Hagie™ Nitrogen Toolbar.....	16
800R Floater .....	17
John Deere Tractors and Fleet Efficiency.....	18-19
John Deere Technologies .....	20-21
John Deere Data Solutions.....	22-23
Life Cycle Solutions / Parts .....	24-25
Specifications .....	26-27
Dealer Support.....	28





# 2430C NUTRIENT APPLICATOR.

Get the best of proven and new technology with the 2430C Nutrient Applicator. Available in 19- and 25-row configurations, the 2430C gives you the rugged frame materials and construction that have proven themselves worthy over tens of thousands of acres, along with new design features that make this the tool of choice for anhydrous ammonia applications.

To start, you'll appreciate the new transport dimensions on our largest model. At just 14' (4.3m) tall and 18' 2" (5.5m) wide in transport configuration, the 2430C cruises under pesky power lines and overpasses, and over narrow roads and bridges. In back, the four-rank design lets residue flow easily between row units, so there's less plugging and fewer stops; a wide range of coulters, knives, and closing disks are available for both configurations.

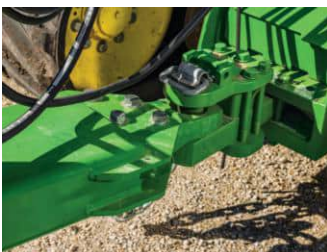
**Both the 19-row and the 25-row models** feature Tru-Depth heavy-duty cast standards, and are available with coulters and a variety of knives for precision placement in a wide range of soil types and conditions





## REDESIGNED 25-ROW OFFERS EASIER TRANSPORT

*The redesigned 25-row 2430C is lower and narrower than our previous model, so you'll get from field to field quickly and easily... and be ready for any soil conditions when you get there.*



**The floating hitch and flexible frame** maintain consistent ground contact and uniform depth. The four-rank frame allows for high levels of residue to flow smoothly through staggered row-units, reducing downtime from plugging.



Change the depth of individual sections with **TruSet™ Side-Side** to accommodate varying field conditions and ensure proper product placement and sealing. Single-point depth control is included on all models as an easy adjustment to maintain depth across the entire machine.



**John Deere Wireless Data Transfer** lets you apply nitrogen with map-based prescriptions delivered straight to the machine. Eliminate costly overlaps and yield-reducing skips. Document the results and never lose the data. Then send to your office as soon as the job is done.



**The wheel and tire configuration** provide more flotation and even weight distribution across the entire machine.



# TruSet™: ON-THE-GO, FROM-THE- CAB DEPTH CONTROL

**NO STOPS. NO SHIMS.  
NO PROBLEM.**

If you thought shims and springs were the height of tillage technology, we have good news... TruSet gives you on-the-go control over application depth, right from the operator's seat... no shims, no tools, no stopping. You can adjust depth in 1/10" (2.5 mm) increments with the push of a button to accommodate changing soil conditions or heavier residue. Plus, TruSet allows you to run and document prescription applications, so you can capture and analyze each pass for a more complete picture of the production cycle.

But the best news? Not only TruSet standard equipment from the factory on many new pieces of John Deere tillage equipment, but your current equipment... even your competitive-model tractor... is likely already TruSet-capable. See your John Deere dealer for more information.

**TruSet depth control**, standard with both 2430C configurations, lets the operator easily adjust placement from the cab, and offers advanced documentation capabilities.





# ST12, ST16, ST18 STRIP-TILL BAR

**Best for:**

- Compaction management
- Nutrient application
- Seedbed preparation

**Season:**

- Fall
- Spring

## SOLUTIONS FOR STRIP-TILL

Strip-tillage offers sustainability, productivity, and cost savings benefits. But it requires precision and repeatability, pass to pass with little room for error. Now John Deere offers a complete solution for farmers that practice strip-tillage.

Every operation and field is different and the John Deere ST Series provides more options to fit your strip-till needs. The ST Series of strip-till bars provide 12- and 16-row integral models and 12-, 16- or 18-row drawn models, providing you options for 20-inch, 22-inch and 30-inch row spacing. Choose from coulter or shank options on the bars that also feature scales (on drawn units only), air adjust row cleaners, and individual row depth.

You'll enjoy the productivity of the strip-till bars, with working speeds of 9.7 km/h to 16 km/h (7 to 10 mph) on coulter units and 8 km/h to 13 km/h (5 to 8 mph) on shank units.

The integrated fertilizer system on the drawn units lets you apply nutrients right where your crop needs it - in the

nurtured strip where it will be planted. The ST Series drawn units hold up to 10 tons of dry fertilizer. The integral models do not have a fertilizer system, but both integral and drawn systems can be customized with a variety of dry or anhydrous solutions. Maximize yields when you apply your fertilizer, reduce compaction, and prepare your seedbed all while reducing erosion, conserving moisture, and improving soil health. You'll also save time and fuel by applying nutrients and prepping the seedbed in only one pass in the fall - leaving the field ready for the planter to roll in spring.

Now it's easier to run with the precision required for strip-till with John Deere technology offerings. AutoPath™ ensures repeatability, so that in the spring you plant into the strips you tilled and applied fertilizer in the fall. Active Implement Guidance reduces variance on curves and turns, while the Rate Controller, Documentation and Prescription let you track every pass and provide you more data about your operation.





# 2510H NUTRIENT APPLICATOR

## APPLY NH<sub>3</sub> AT HIGH SPEEDS.

*Time is money, so when application windows are tight, take to the field with the 2510H Nutrient Applicator and cover up to 59 acres per hour.*

We all know that properly-placed nutrient applications help plants reach their maximum yield potential and help minimize nutrient run-off. But in addition to putting nutrients in the right place, you have to make sure they get there at the right time...and that's where the 2510H shines.

The 2510H gives you the flexibility you need to apply in heavy fall residue, in spring right behind the planter, or all the way up to 30-inch (76.2 cm) crop. But along with that flexibility, you get speed...the single-disk opener allows you to breeze through applications at up to 10 mph (16 km/h), while reducing soil disturbance and nutrient loss.





*Applying on highly erodible land? The low-disturbance applicator leaves residue intact, so your customers can maintain conservation compliance.*

The 2510H features a three-year warranty covering all frame members, including wheel modules (weldments and tubes), wing-fold components, and the front hitch.

\* Hour and/or usage limitations apply and vary by model. See Dealer for warranty details.

## 2510H LOW-DISTURBANCE DESIGN

Not only does the low-disturbance design of the 2510H opener allow for higher application speeds and less fuel consumption, you also get key benefits like:

- Higher productivity and reduced risk of crop injury during sidedress applications, allowing later nitrogen application and reducing nitrogen movement
- Reduced residue disturbance. Maintaining residue on the soil surface reduces erosion and keeps organic matter in the field for the best crop performance.



# 2510H NUTRIENT APPLICATOR WITH DRY ATTACHMENT

## HIGH-SPEED LOW-DISTURBANCE APPLICATION

*When you're up against tight and closing application windows, the 2510H Nutrient Applicator can help.*

Need the maximum in application flexibility? Then you need the 2510H Nutrient Applicator and Dry Attachment. By allowing dry and anhydrous applications at the same time, this machine delivers a 50 percent increase in equipment utilization, while still delivering application speeds up to 10 mph (16 km/h).

In addition to enabling high-speed application, the single-disk opener design enhances your stewardship efforts by precisely placing dry fertilizer up to 4.5 in (114 mm) deep and anhydrous up to 5.5 in (140 mm) deep, reducing potential losses while still keeping nutrients where they're needed most.

The 2510H with Dry Attachment offers configurations for off-row and on-row dry fertilizer banding in 15-row and 16-row configurations. With a working width of 40 ft (12.2 m) the 16-row configuration can be used for pre-plant and fall applications. By applying off-row, the 37.5 ft (11.43 m) 15-row configuration offers sidedress capability.

*The 2510H with Dry Attachment is available in 15- and 16-row configurations. Both configurations offer 6- and 9-ton dry poly tank options that work in tandem with the applicator bar to place anhydrous and dry nutrients.*











# 2510L LIQUID FERTILIZER APPLICATOR

## SIDEDRESSING IN SYNC.

The secret to flexibility, precision placement, field documentation, and map-based prescription application is here: the 2510L Liquid Fertilizer Applicator.

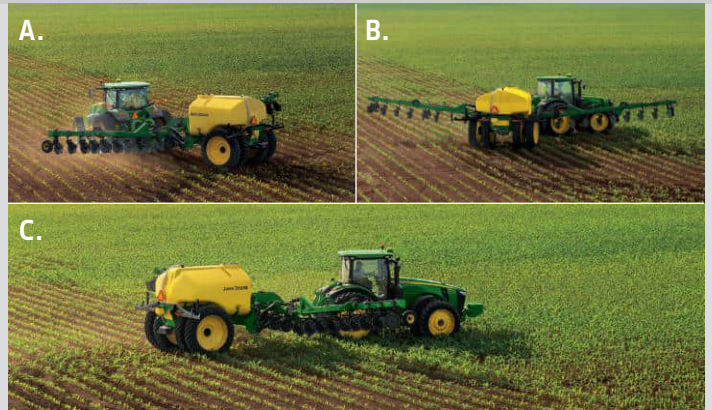
With a total of 20 spacing and row combinations, plus up to 2,400 gallons (9,084 L) of available tank capacity, you can order the 2510L in whichever configuration best fits your

farm. Then, connect directly to John Deere Section Control, your GreenStar Rate Controller, and the GreenStar Display, for an advanced level of system control and application precision. Hydraulic wing down pressure and a flex-wing design help ensure accurate placement, while the hydraulic “wing-kick” feature lifts the wings during turns, minimizing crop damage.





Choose from **knife** or **injector coulters**. **1.** Knife coulters deliver the most efficient application of fertilizer by knifing it directly into the soil with no worries of evaporation. **2.** Stainless steel industrial injectors feature no-drip tips to let you apply a solid stream of liquid fertilizer directly behind the coulters for high-precision injection.



**Hydraulic wing kick** automatically lifts the wings higher than the main toolbar when turning in the field, providing increased clearance to greatly reduce any crop damage.



**Single-reach tongue** makes it easy to turn tight corners and puts tires in the spacings, not the rows.



A **31-inch (78.7 cm) crop clearance** lengthens your application period.







# 2530L LIQUID FERTILIZER APPLICATOR

**HIGH CLEARANCE, NARROW-TRANSPORT DESIGN OFFERS EFFICIENCY AND FLEXIBILITY**

Narrow roads and bridges are no problem for the 2530L Liquid Applicator. With a transport width of just 11 ft. 10 in. (3.6 m), you'll get an easier, faster trip from this field to that one, increasing your daily acreage potential and helping you squeeze through tight application windows.

The 2530L is available in working widths of 60 ft (18.3 m) or 66 ft (20.1 m), and with a low profile tank capacity of either 1,800 gallons (6814 L) or 2,600 gallons (9842 L). Hydraulic wing down pressure and a flex-wing design help ensure accurate placement, while the hydraulic "wing-kick" feature lifts the wings during turns, minimizing crop damage.

To give you the ultimate in accuracy, control, and mapping, the 2530L comes standard with a GreenStar™ Rate Controller, enabling one-step integration of the GreenStar Display with the 2530L solution system and giving you access to the full suite of John Deere precision applications.

*The 2530L comes standard with a GreenStar Rate Controller for full one-step integration of the GreenStar Display with the liquid system. This integration enables features like automatic rate control, field documentation, map-based prescriptions and John Deere Section Control (activation required).*



# HAGIE™ NITROGEN TOOLBAR *LEVEL UP YOUR STS*



Want to make the most of your Hagie STS sprayer? The Hagie Nitrogen Toolbar can increase nitrogen efficiency by allowing you to make rate decisions closer to the crop's peak demand. In-season split applications can reduce the total amount of nitrogen used, while making more available to the crop, at the right time. You'll make the most of your nitrogen dollars, while maximizing potential yields.

In the field, you'll see average application speeds of 8 to 10 mph (12.9 to 16 km/h); the 'floating design' easily follows ground contours, while the four standard gauge wheels offer precise depth control and make for easier storage.

The Hagie Nitrogen Toolbar is available in 30' (9.14 m) and 40' (12.19 m) widths, in 20-in. (50.8 cm) and 30-in. (76.2 cm) row spacings.



# 800R FLOATER

## NEW FLOATER SUPPORTS AIR BOOM, SPINNER-SPREADER, AND LIQUID APPLICATION SYSTEMS.

For busy producers and ag-service providers, flexibility is critical. So when we introduced the 800R Floater, we gave it the features you need to get the product on and get the machinery out, before weather closes tight application windows.

The 800R offers the same plush, quiet cab as our self-propelled sprayers, making it an easy transition for operators. Available cab features like the ActiveSeat™ II suspension, leather-wrapped steering wheel, 6.5-inch (16.51 cm) touch screen radio help long days go by faster, while the available Ultimate visibility package adds LED work lights, beacons, and eight service lights improves (visibility) when the days do stretch into night.

We've also made life easier outside the cab. The 800R features a common hydraulic pump, so when it's time to switch from dry to liquid application, you spend less time in the shop...only about 6 hours...and more time on the job.

**Every 800R comes equipped with integrated precision-ag features like the factory-installed StarFire™ 6000 Receiver and Generation 4 CommandCenter™ Display, giving you access to the entire suite of guidance, mapping, service, and management applications.**

**LS20:** The LS20 Liquid System is available with 30-inch (76.2-centimeter) turrets and 60-inch (152.4-centimeter) cams, or 60-inch (152.4-centimeter) on-center cam locks with 15-inch (38.1-centimeter) on-center high-flow five-way nozzle bodies. Optional front fill and side fill options are available.

**DS35:** The 800R uses an industry-proven New Leader Dry Spinner Spreader. This 14 ft (4.27 m) dry box holds up to 330 cu ct (9.34 m<sup>3</sup>) of product, and is available in multiple configurations to meet a variety of application needs. Spread widths range from 60 to 90 ft (18.29 to 27.43 m). The single bin option can be ordered in a 304 stainless steel or 409 painted stainless steel; order the stainless steel MultApplier insert, and you can spread two products at once.

**NL4500G4:** The new NL4500G4 Edge Spreader makes it possible for the floater to spread product across the field edges, without applying it into waterways or ditches. ISO-compatible touch-screen controls are integrated into the Generation 4 Display.



# JOHN DEERE POWER WILL PULL YOU THROUGH.

## PLAY TO WIN WITH THE INDUSTRY'S MOST COMPLETE TRACTOR LINE-UP

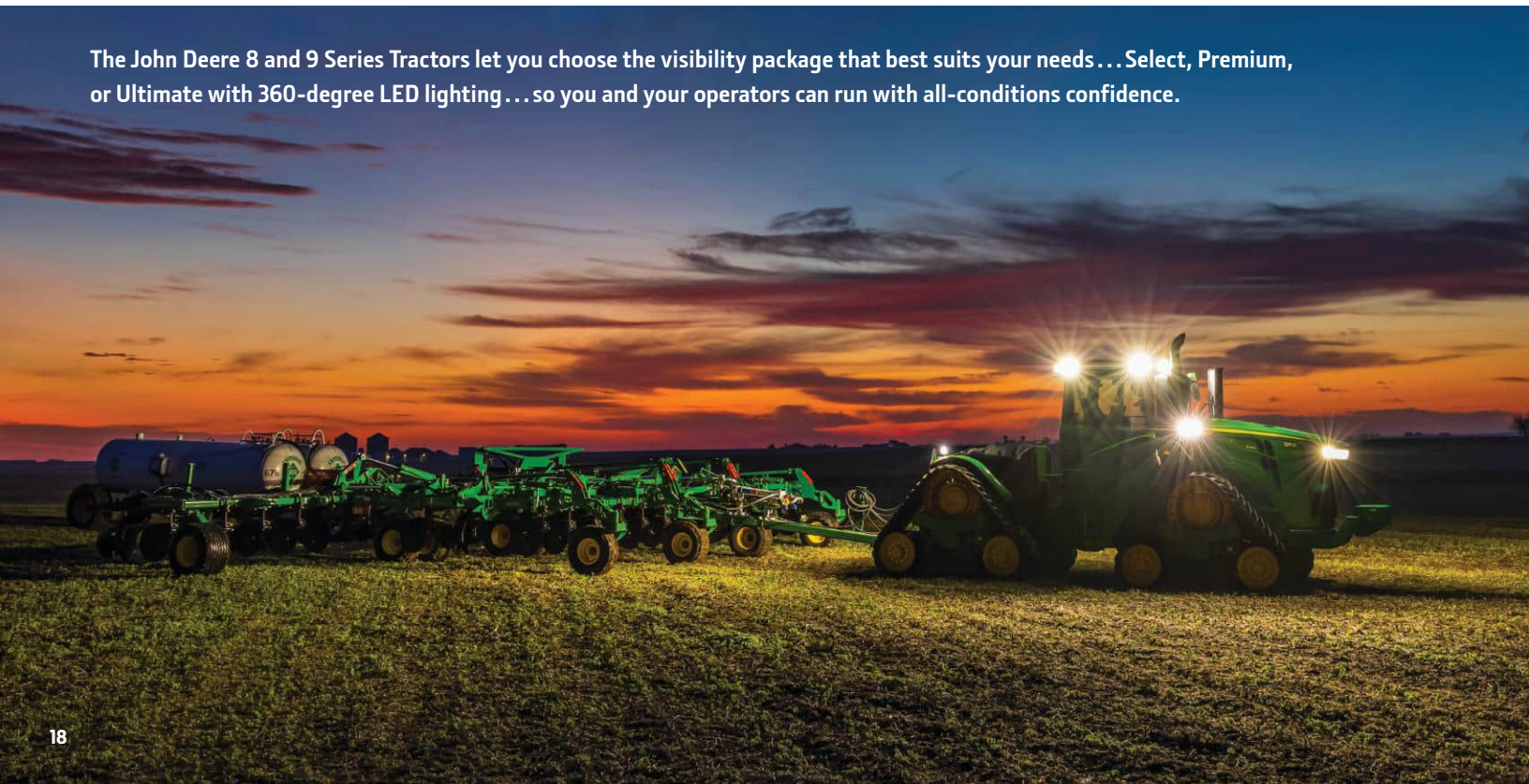
Big jobs need big power...and delivering big power is what John Deere tractors do best. Our lineup of row-crop, 4WD, and tracked tractors, a complete range of cab, transmission, comfort, convenience, and visibility options, and a full suite of standard and available precision products means that your John Deere dealer is the one-stop shop for all your application needs.

Take the 9 Series Tractors. These machines offer you more power, more precision, and more options than ever before. No matter the terrain, the conditions, or the job, these beasts give you the strength and power you need to pull

the heaviest, widest implements with ease. And with integrated precision ag technology, you can manage the biggest fields and the tightest timelines with ease.

The 8 Series Tractors are now available in three configurations - wheels, two tracks, and the game-changing four-track 8RX. With more power, durability, and comfort than any generation of 8 Series before, these machines are built to deliver the most integrated experience an operator can have. Available in 230 to 410 hp models, the 8 Series Tractors are the next leap forward in power and precision.

The John Deere 8 and 9 Series Tractors let you choose the visibility package that best suits your needs...Select, Premium, or Ultimate with 360-degree LED lighting...so you and your operators can run with all-conditions confidence.





**COMFORT & CONVENIENCE PACKAGES:** Both the 8 Series and 9 Series Tractors offer three Comfort and Convenience packages to fit your needs...Select, Premium, and Ultimate. But regardless of which package you choose, you'll still get the John Deere CommandARM™ console that puts critical controls within an easy reach. You'll get all the storage space you need for drinks, meals, and other stowable items. And you'll have plenty of outlets to keep your electronics powered.

SELECT	PREMIUM	ULTIMATE
<ul style="list-style-type: none"> <li>• Cloth seat with mechanical controls and mechanical lumbar support; 8° left-hand and 40° right-hand swivel</li> <li>• AM/FM/WX radio with auxiliary and Bluetooth inputs; 4 speakers</li> <li>• Business-band ready</li> <li>• 4 USB ports and 12V outlet</li> <li>• Dual-tilt steering column</li> </ul>	<ul style="list-style-type: none"> <li>• Cloth seat with electronic controls and pneumatic lumbar support; 25° left-hand and 40° right-hand swivel</li> <li>• 6.5-inch (16.5 cm) touchscreen radio, SiriusXM satellite and smartphone ready; 6 speakers with subwoofer</li> <li>• Business-band ready</li> <li>• 4 USB ports, 12V outlet</li> <li>• Dual-tilt steering column</li> <li>• Foot rests</li> <li>• Refrigerator</li> <li>• Right-hand accessory rail</li> <li>• 110/220V outlet</li> </ul>	<ul style="list-style-type: none"> <li>• Leather seat with electronic controls, massage and pneumatic lumbar support; 25° left-hand and 40° right-hand swivel; heated and ventilated; adjustable bolsters</li> <li>• 6.5-inch (16.5 cm) touchscreen radio, SiriusXM satellite and smartphone ready; 6 speakers with subwoofer</li> <li>• Business-band ready</li> <li>• 4 USB ports, 12V outlet</li> <li>• Dual-tilt steering column</li> <li>• Foot rests</li> <li>• Refrigerator</li> <li>• Right-hand accessory rail</li> <li>• Carpeted floor mat</li> <li>• Leather-wrapped steering wheel</li> <li>• 110/220V outlet</li> </ul>





# JOHN DEERE INTEGRATED SOLUTIONS

## A WORLD OF CONNECTED TECHNOLOGY, RIGHT FROM THE FACTORY

John Deere makes it easy for you to access an entire suite of connected applications, all designed to help you make the most of every seed, every hour, every gallon, and every bit of machine-related information.

Get started faster, with more precision, less calibration, and faster pull-in time with the StarFire™ Receiver and SF3 signal. Integrated AutoTrac assisted steering gives you accurate, scalable guidance for low-stress operation in nearly any conditions, and can improve field efficiency by 10 percent or more. The 8 and 9 Series Tractors also feature standard JDLink hardware; enable free JDLink service, and you can wirelessly transfer machine and field data to the John Deere Operations Center for anytime, anywhere access to critical information.

From here? The sky's the limit. Choose any of our operation-specific applications to help maximize efficiency and productivity during planting, tillage, or other field activities.

---

**John Deere Operations Center™.** Get a smoother start to the workday, easier access to equipment and operator performance information, and powerful data analysis tools, all with the John Deere Operations Center. We've simplified the look, feel, and navigation features to offer a nearly identical experience, regardless of whether you're using the desktop or mobile versions. Powerful new features like Work Planner get you and your operators into the field faster, while new Analysis tools help you turn this year's data into next year's decisions. **Download the John Deere Operations Center mobile app from Google Play or the Apple App store.**

---

*\*All integrated tech is based on factory availability.*





## JOHN DEERE RATE CONTROLLERS

*Get full control over your nutrient application, without compromising accuracy, cab space, or access to precision technology, all with the John Deere family of rate controllers. Choose the controller that fits your needs, your business, your equipment, and your operators.*

### **GREENSTAR RATE CONTROLLER**

The GreenStar Rate Controller integrates your GreenStar 3 2630, CommandCenter™ 4600/4200, and Universal 4640/4240 Displays with the 2510 Series nutrient applicators and liquid fertilizer applicators. With the GreenStar Rate Controller, you'll get precise, automatic rate control, along with full documentation and map-based prescription ability, and integration with John Deere Section Control (activation required) for reduced input costs through elimination of overlaps.

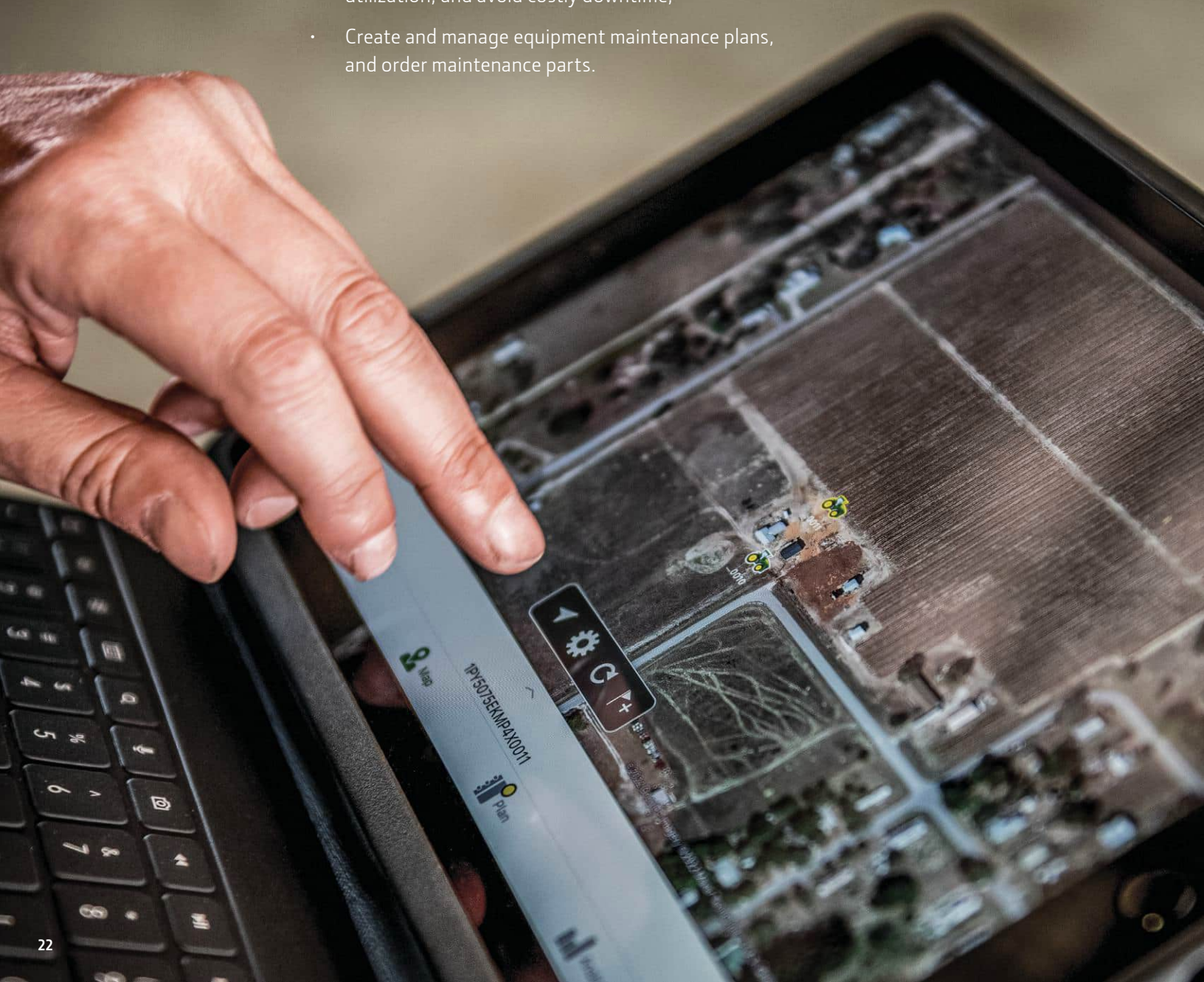
### **GREENSTAR RATE CONTROLLER DRY**

The GreenStar Rate Controller Dry gives you the ability to integrate your GreenStar 3 2630, CommandCenter™ 4600/4200, and Universal 4640/4240 Displays with your self-propelled or pull-type dry box spinner spreaders, eliminating the need for a separate or third-party controller. By integrating rate control functionality with your display, you can reduce in-cab clutter, and use John Deere Precision Ag Technology products for guidance and product application. You can document applications, run map-based prescriptions, and use John Deere Section Control to avoid unnecessary overlap. The GreenStar Rate Controller Dry is compatible with competitive multi-tank air carts.



**JDLink™** JDLink is the bridge between you, your team, and your connected equipment. Working with your StarFire receiver, GreenStar display, and John Deere Operations Center, JDLink enables seamless, automatic transfer of equipment, field, and operator data to and from Operations Center, allowing you to:

- Share field and equipment data with your dealer, crop advisors, or anyone else you choose;
- Access, view, and share your data any time, from anywhere, with web-based and mobile apps;
- Move field and operational data to and from your machines, easily and securely;
- Monitor, manage and analyze equipment performance and utilization, and avoid costly downtime;
- Create and manage equipment maintenance plans, and order maintenance parts.







\* AgLogic is available only in U.S.

# ***I RUN TO GET MORE DONE. AGLOGIC™ MAKES IT EASY.***

***THE RIGHT RESOURCES. THE RIGHT PLACE.  
THE RIGHT TIME.***

Combining GPS, cellular technology, and web-based software, the AgLogic automated work order system delivers a live view of your equipment and work orders on a single website, or on Apple and Android mobile devices. With powerful scheduling and routing capabilities, wireless file transfer, near-real-time reporting, and more, AgLogic allows you to plan and make solid logistical decisions every day, maximizing the productivity of your drivers and equipment.

Using AgLogic from any computer with internet access, you can manage work orders and plot the most efficient routes; track assets and activities of your fleet, even non-John Deere machines; send work orders to the field and back;

transmit prescriptions to your Android and Apple tablet in the field; and get turn-by-turn directions to any field or facility associated with the work order.

Use the AgLogic mobile app in conjunction with the AgLogic web-based system, and you have a complete logistics solution that allows you to view work orders in priority order, view field boundaries and locations, view the tender truck location, wirelessly transfer prescription files, and more. The AgLogic Tender app gives tender drivers their entire daily schedule, with driving directions, and can report tender locations back to dispatch for an easy overview of fleet status.



## EXPERIENCE THE JOHN DEERE DIFFERENCE

What's the John Deere Difference? It's more than just the team behind the counter, or the technicians in the service bay. It's knowing you'll walk out of the dealership with the part, attachment, or upgrade that meets your performance demands and your budget. It's getting questions answered or issues diagnosed remotely, while you're in the field. It's the confidence that comes from choosing equipment built and supported by one of the oldest names in ag.

But it's also about having choices. That's why your dealer offers a wide range of Genuine John Deere parts, along with Reman and A&I Products parts, as well as a 12-month limited parts and labor warranty<sup>1</sup> and a variety of financing options<sup>2</sup>.

So no matter what the part, the need, or the budget...you can run with confidence, knowing we have you covered. That's the John Deere difference.

<sup>1</sup>12 month/unlimited hour warranty on most new John Deere agricultural parts when installed by an authorized John Deere Dealer. 6 month/unlimited hour warranty for most new John Deere agricultural and turf equipment parts. See John Deere Service Parts Warranty US & Canada and participating dealers for more details. Most A&I/Sunbelt parts carry a 1-year warranty. Some exclusions apply. See your participating A&I re-seller or John Deere Dealer for more details.

<sup>2</sup>Financing on approved John Deere Financial credit only. Contact your Multi-Use Account merchant or dealer for complete details.





A.

**A. CONVENTIONAL APPLICATOR KNIVES**

Need a like-for-like replacement for your applicator knives? We've got your part. Our conventional applicator knives feature high strength steel shanks and chrome carbide points for excellent wear characteristics, plus universal mounting for All-Makes applications. Available as a standard knife or with a vapor tube.

**B. HEAVY-DUTY STRIP-TILL KNIVES**

Our heavy-duty knives feature cast-chrome pin-on points for superior lifting and fracturing and consistent nutrient placement, without soil inversion or blowout. Points can easily be switched out in-season between mole style and wingless, depending on soil and field conditions.

**C. REPLACEABLE POINTS**

Our new wingless point provides a low-disturbance option for customers who need to run shallow and fast. Chrome-carbide gives excellent wear performance, while mole style and wingless options let you tailor the shattering action to your specific conditions.

B.



C.



With advanced TruSet Tillage technology you can independently adjust settings for depth and pressure (while on the go) in just seconds. That's up to 200 times faster than manual field adjustments. With just a few simple touches you can command TruSet to respond to changing field conditions. Go from lighter soil to highly compacted areas with 1/10-in. (2.5mm) accuracy. Also at your fingertips is real-time data for actual tillage settings, in addition to tillage pass documentation for later review and analysis.

**2510H PARTS REBUILD KITS NOW AVAILABLE**

Genuine John Deere repair kits make it easier to repair and replace wear components on the 2510H High-Speed Applicator. These convenient kits contain the most common wear parts, and give you all the components you need to rebuild a complete machine, not just a single row.



## NUTRIENT APPLICATION SOLUTIONS / SPECIFICATIONS

MODEL	2510L VERTICAL-FOLD	2510L VERTICAL-FOLD	2510L SIDE-FOLD	2530L SIDE-FOLD
<b>SPECIFICATIONS</b>				
Fold type	Vertical-fold	Vertical-fold	Side-fold	Side-fold
Base machine width	30 ft. (9.1 m)	40 ft. (12.2 m)	60 ft. (18.3 m)	60 ft. (18.3 m), 66 ft. (20.1 m)
Allows application when outer wing is folded	No	Yes	Yes	No
Available row spacing	30 in. (76.2 cm)	20, 22, 30, 36, 38, and 40 in. (50.8, 55.9, 76.2, 91.4, 96.5, and 101.6 cm)	20, 22, 30, and 40 in. (50.8, 55.9, 76.2, and 101.6 cm)	15, 20, 22, 30, 36, 38, 40 in (38.1, 50.8, 55.9, 76.2, 91.4, 96.5, 101.6 cm.)
Tank size	1,050, 1,350, or 1800 gal. (3,975, 5,110, or 6,814 L)	1,050, 1,350, or 1,800 gal. (3,975, 5,110, or 6,814 L)	1,800 or 2,400 gal. (6,814 or 9,085 L)	1,800 or 2,600 gal. (6,814 or 9,842 L)
Wing flex	5-degree flex up and 5-degree flex down	5-degree flex up and 5-degree flex down	15-degree up 8-degree down	10-Degree flex up 15-Degree flex down
Hydraulic down pressure		Yes		Yes
Hydraulically driven pump		Yes		Yes
Transport width	14 ft. 0 in. (4.3 m)	14 ft. 0 in. (4.3 m)	18 ft. 0 in. (5.5 m)	11 ft. 10in. (3.6 m) with gauge wheel 14 ft. 10in. (4.5 m) without gauge wheel
Transport height	13 ft. 4 in. (4.1 m)	13 ft. 4 in. (4.1 m)	9 ft. 6 in. (2.9 m) for 1,800-gal. (6,814 L) tank 10 ft. 5 in. (3.2 m) for 2,400-gal. (9,085 L) tank	12 ft. (3.66 m) with gauge wheel 12 ft. 7 in. (3.8 m) without gauge wheel
Transport length	17 ft. 8 in. (5.4 m) for 1,050- and 1,350-gal. (3,975 and 5,110 L) tank 21 ft. 5 in. (6.5 m) for 1,800-gal. (6,814 L) tank	17 ft. 8 in. (5.4 m) for 1,050- and 1,350-gal. (3,975 and 5,110 L) tank 21 ft. 5 in. (6.5 m) for 1,800-gal. (6,814 L) tank	21 ft. 5 in. (6.5 m)	21 ft. 5 in. (6.5 m)
<b>CLEARANCE</b>				
Operating frame clearance		31 in. (78.7 cm)		29.5 in. (74.9 cm)
<b>COULTERS</b>				
Number of coulters	11 – 30 in. (76.2 cm) 13 – 30 in. (76.2 cm)	11 – 36, 38, 40 in. (91.4, 96.5, 101.6 cm) 13 – 36, 38, 40 in. (91.4, 96.5, 101.6 cm) 15 – 30 in. (76.2 cm) 17 – 30 in. (76.2 cm) 23 – 20, 22 in. (50.8, 55.9 cm) 25 – 20 in. (50.8 cm)	17 with 40-in. (101.6 cm) spacing 23 with 30-in. (76.2 cm) spacing 25 with 30-in. (76.2 cm) spacing 35 with 20-in., 22-in. (50.8, 55.9 cm) spacing 37 with 20-in., 22-in. (50.8, 55.9 cm) spacing	23 with 30-in (76.2 cm) spacing 25 with 30-in (76.2 cm) spacing 47 with 15-in (38.1 cm) spacing 49 with 15-in (38.1 cm) spacing 35 with 20-in (50.8 cm) spacing 37 cwith 20-in (50.8 cm) spacing 35 with 22-in (55.9 cm) spacing 37 with 20-in (50.8 cm) spacing 17 with 36-in (91.4 cm) spacing 19 with 36-in (91.4 cm) spacing 17 with 38-in (96.5 cm) spacing 19 with 38-in (96.5 cm) spacing 17 with 40-in (101.6 cm) spacing 19 with 40-in (101.6 cm) spacing
Coulter style			20-in. (50.8 cm) ripple coulter	
Coulter frame tubing	7 x 7-in. (17.8 x 17.8 cm) single rank	7 x 7-in. (17.8 x 17.8 cm) single rank	5 x 7-in. (12.7 x 17.8 cm) double bar (single on outer wings)	5 x 7-in. (12.7 x 17.8 cm) double bar 7 x 7-in. (17.8 x 17.8 cm) wing tips
<b>WHEEL MOUNTING</b>				
Gauge wheels	2	2	4	4
<b>FERTILIZER</b>				
Fertilizer delivery			Knives or injectors	
<b>TRACTOR COMPATIBILITY</b>				
Engine horsepower requirement	140 - 160 hp (104.3 - 119.3 kW)	160 - 190 hp (119.3 - 141.7 kW)	200 - 220 hp (149.1- 164.1 kW)	200 - 220 hp (149.1 - 162 kW) 295 - 345 hp (220 - 257.3 kW)
Selective control valve (SCVs) required	Three	Four	Three	Three



MODEL	2510C, 13 ROW	2510C, 17 ROW
<b>SPECIFICATIONS</b>		
Working width	32 ft. 6 in. (9.9 m)	32 ft. 6 in. / 42 ft. 6 in (9.9 - 13 m)
Number of rows	13	13/17
Row spacing	30 in. (76 cm)	30 in. (76 cm)
Transport width	18 ft. 7 in. (5.7 m)	18 ft. 7 in. (5.7 m)
Transport height	13 ft. 4 in. (4.1 m)	13 ft. 4 in. (4.1 m)
Frame	4 x 6-in. (10.2 x 15.2 cm) tubes	4 x 6-in. (10.2 x 15.2 cm) tubes
<b>CLEARANCE</b>		
Fore-and-aft	93 in. (236.2 cm)	93 in. (236.2 cm)
Under frame	32 in. (81.3 cm)	32 in. (81.3 cm)
Transport clearance	12 in. (30.5 cm)	12 in. (30.5 cm)
<b>FRONT COULTER</b>		
Coulter	22 x 0.177-in. (55.9 cm x 4.5 mm) flat coulters, independently mounted	22 x 0.177-in. (55.9 cm x 4.5 mm) flat coulters, independently mounted
Blade spacing	30 in. (76.2 cm)	30 in. (76.2 cm)
<b>SHANK &amp; KNIFE</b>		
Shank	1.25 in. x 2 in. x 32 in. (32 mm x 51 mm x 81.3 cm)	1.25 in. x 2 in. x 32 in. (32 mm x 51 mm x 81.3 cm)
Trip force	1,300 lb. (589.7 kg)	1,300 lb. (589.7 kg)
Trip height	11 in. (28 cm)	11 in. (28 cm)
Knife	Conventional	Conventional
Operating depth	5 - 10 in. (12.7 - 25.4 cm)	5 - 10 in. (12.7 - 25.4 cm)
<b>CLOSING DISKS</b>		
Adjustments	Side-to-side, pitch	Side-to-side, pitch
Vertical travel	14 in. (35.6 cm)	14 in. (35.6 cm)
Bearing	Maintenance free	Maintenance free
<b>WHEEL MOUNTING</b>		
Tandem Walk-Over™ wheels	12.5L x 15	340/65R18
<b>FERTILIZER</b>		
Fertilizer tubes	Anhydrous	Anhydrous
<b>HITCH</b>		
Depth control system	Single-point depth control	Single-point depth control
Rigid T-hitch	6 x 10 in. (15.2 x 25.4 cm)	6 x 10 in. (15.2 x 25.4 cm)
Rear hitch	Extends rearward and side-to-side	Extends rearward and side-to-side
<b>TRACTOR COMPATIBILITY</b>		
Horsepower requirements*	17-30 engine hp (12.6 - 22.4 kW) per row	17-30 engine hp (12.6 - 22.4 kW) per row
Operating speed	5 - 8 mph (8 - 13 km/h)	5 - 8 mph (8 - 13 km/h)
Selective control valve (SCVs) required	Two	Two
Daily maintenance points	36	44

\* The engine horsepower and torque information for non-Deere engines are provided by the engine manufacturer and are to be used for comparison purposes only. Actual operating horsepower and torque may be less. Refer to the engine manufacturer's website for additional information.

STRIP-TILL SOLUTIONS	WORKING DEPTH	WORKING SPEED	REQUIRED HP (PTO)/FT	WEIGHT/ BLADE	SPACING OPTION	RESIDUE CONDITIONS	DEPTH CONTROL
<b>ST Integral</b>	Shanks up to 11" (27.9 cm) Coulters up to 6" (15.24 cm)	Coulters 7 to 10 mph (9.7 km/h to 16 km/h) Shanks 5 to 8 mph (8 km/h to 13 km/h)	25-30 hp/row (61.2 – 73.4 kW/m)	n/a	30 in (76.2 cm)	Light/ medium/ heavy	Pneumatic Down Pressure Control
<b>ST Drawn</b>	Shanks up to 11" (27.9 cm) Coulters up to 6" (15.24 cm)	Coulters 7 to 10 mph (9.7 km/h to 16 km/h) Shanks 5 to 8 mph (8 km/h to 13 km/h)	25-30 hp/row (61.2 – 73.4 kW/m)	n/a	20 in (50.8 cm) 22 in (55.9 cm) 30 in (76.2 cm)	Light/ medium/ heavy	Pneumatic Down Pressure Control



