

780A

# **CHAMPION®** **Series IV** **MOTOR GRADERS**



|   |                        |
|---|------------------------|
| MODEL   | 780A                   |
| Configuration   | Articulated            |
| Operating Weight*   | 45,240 lbs (20 521 kg) |
| Net hp/kW   | 200 (150)              |
| * Typically equipped; see specifications for details. Model shown may include optional equipment. |                        |





## What it takes to be a Champion

There's a fine line between a good grader and a great one. With the

development of Series IV graders,

Champion is crossing that line to be  
"the best on earth" for every job  
your grader has to do.

*Champion's "voice of the customer" program led directly  
to many of the operator features introduced in Series IV.*

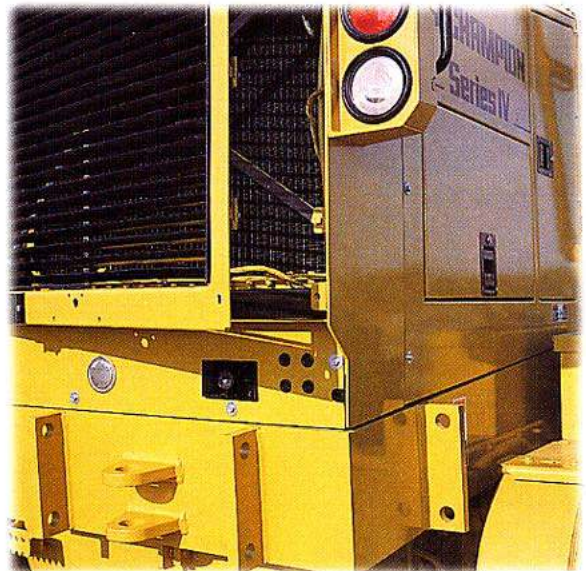
When it comes to cutting new  
roads and pushing heavy loads,

Champion has been the world's number  
one specialist for a long time.

Now, with Series IV, Champion moves up to first choice for fine grading, too,  
with a wide-ranging list of new features to enhance productivity. And Series IV  
also brings you a new standard in  
reliability engineering so, at the end of the  
day, you get the job done at a lower cost.

Series IV graders were designed by grader  
people – we put our engineers into the cab  
with some of the best operators in the

*Series IV is built on a solid foundation of already proven Champion  
features. Some of these include: the rear perimeter frame, the  
first user lifetime frame warranty and a hinged rear grill  
for easy radiator cleaning.*





business to compare ideas. We built Series IV together, with over 60 specific design recommendations.

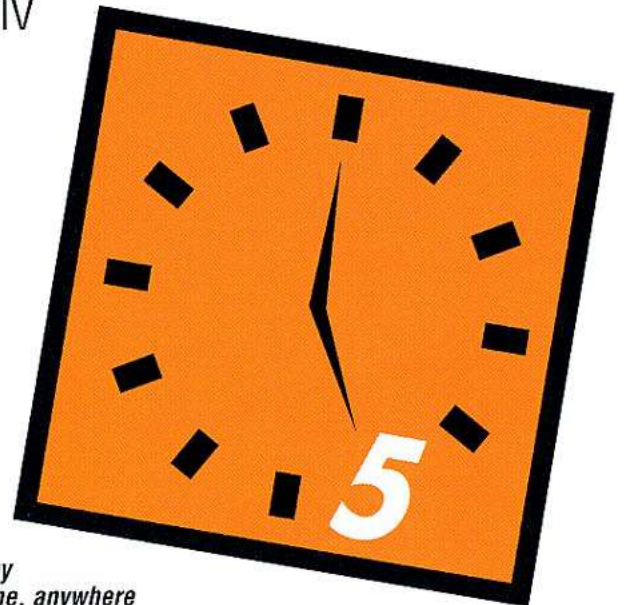
For instance:

- a unique load-sensing hydraulic system for fine grading “featherability” and power to spare
- a clear line-of-sight to the work zone and every area you need to see
- a place to hang your hat
  - a 72° steering arc on the front axle for tighter turns
  - a more comfortable place to work
  - easier access for servicing
- a familiar “operator-friendly” cab layout



... not to mention the rock-solid construction that earned Champion graders a place on the preferred list of fleet owners around the world.

Series IV is getting the kind of support a great Champion deserves, too. Electronic parts ordering. Flexible financing options. Highly trained dealers and service staff. A warranty that says Series IV is built to live up to the name of Champion...  
...the best on earth



*Champion dealers are equipped to support customers with “the best service on earth”, including next-day delivery on emergency parts ordered by 5pm local time, anywhere in the continental United States or Canada.*



# Looking out for "Number One"

That means you, because the most important part of a grader is the operator who drives it.



When you get into the cab of a Series IV grader, you'll see how every part is engineered to help the operator with the job. The roomy both-feet-on-the-floor layout, adjustable seat and pedal-controlled tilting pedestal let you fit the grader to your personal taste for a comfortable working position.

*Make yourself comfortable! Set your feet down, adjust the seat, slide and tilt the pedestal any which-way – all your controls and gauges move with you.*

The low-effort clutch and brake pedals and short-throw levers give Series IV a light touch for easy handling and fine precision. The new front window frame, blade lift mounting and front axle all align for an unobstructed line of sight to the work area. The distinctive sloped frame and ergonomic cab design combine for excellent 360° visibility close-in to the cab and wheels. All your operating gauges are up front in clear view, right on the pedestal. From your seat you can see everything you need to do the job – from the controls to the grade stakes, to both ends of the blade, straight ahead and in the curves.

This Champion is built to work as long and hard as you do. Series IV comfort features help an operator get through a full day's grading without tiring. We kept all the hydraulic hoses outside of the cab, so you don't have to worry about leaks or excess heat and noise on the inside.

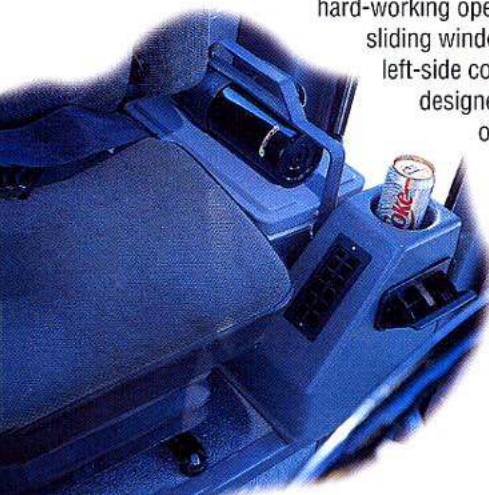
*No matter what grader you have run before, you'll feel at home with the new Series IV lever arrangement and low-effort controls.*

The cab's instrumentation is arranged in a logical sequence including the 3-level M4 electronic monitoring system and the side console where your switches are arranged in proper operating order. Everything is backlit for late work.



With a busy season ahead of you, little extras can make a big difference. That's why

Champion engineers went to work on a package of thoughtful options for hard-working operators...things like a coat hook in the cab and sliding windows to catch a fresh breeze. We even created a new left-side convenience console, an exclusive Series IV option designed to help you bring some of the comforts of home to work with you.

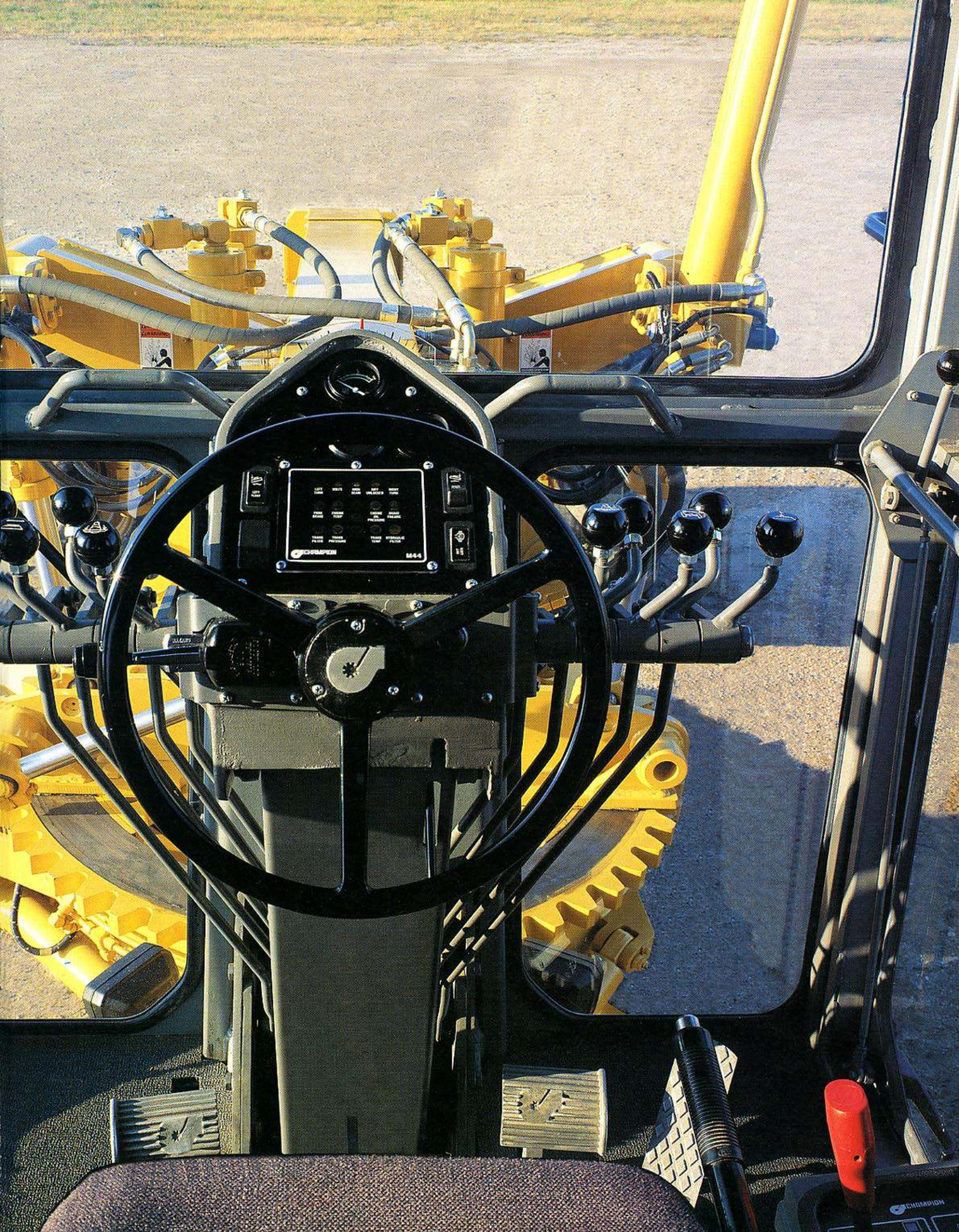


The whole package makes Series IV a better place to work – a grader that reduces fatigue, speeds up duty cycles and does more for the money.

*Series IV options include a new left-side console with operator conveniences including a lunch box cooler, vacuum bottle, ash tray and cup-holder.*

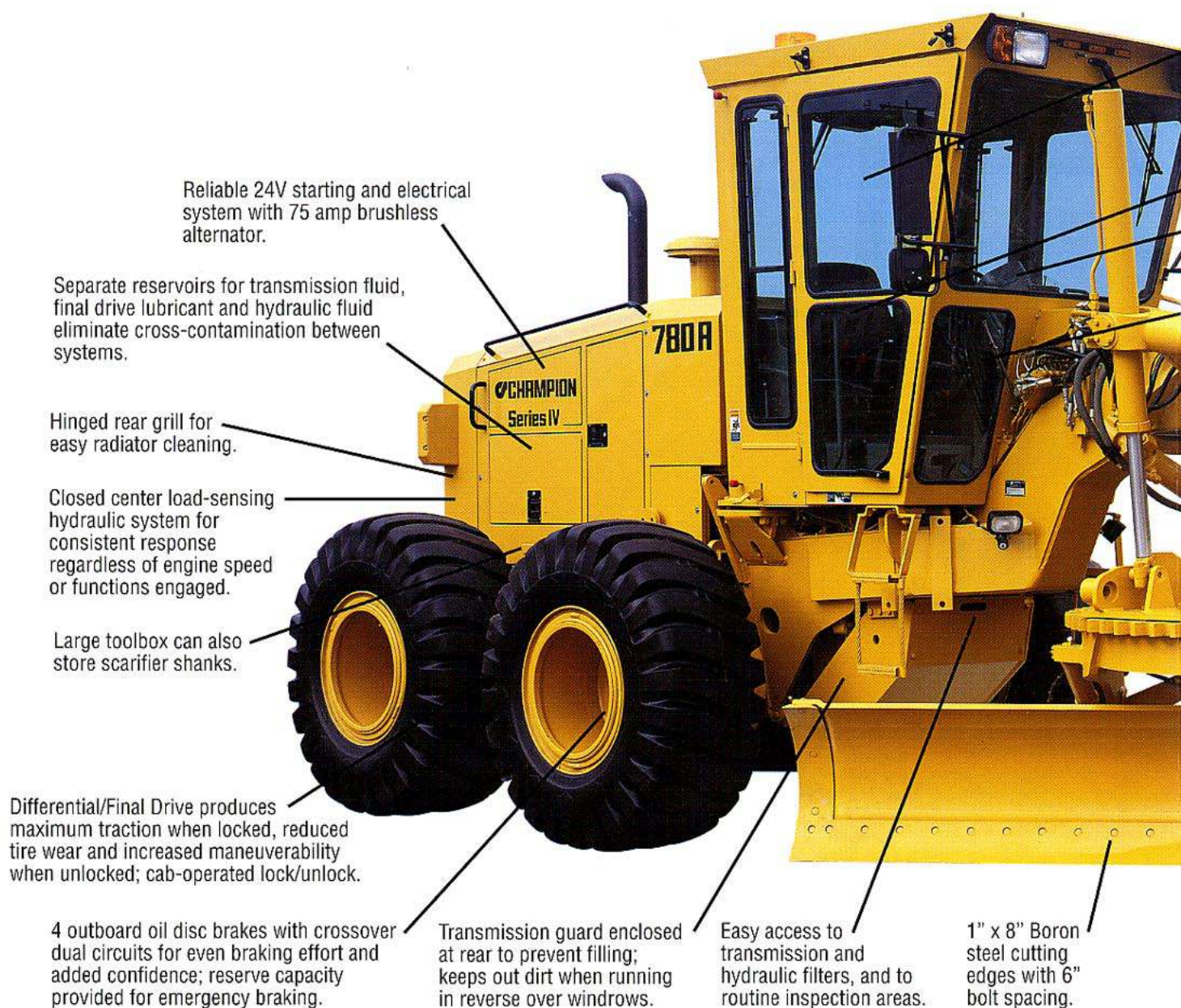








# Series IV: 780A



Reliable 24V starting and electrical system with 75 amp brushless alternator.

Separate reservoirs for transmission fluid, final drive lubricant and hydraulic fluid eliminate cross-contamination between systems.

Hinged rear grill for easy radiator cleaning.

Closed center load-sensing hydraulic system for consistent response regardless of engine speed or functions engaged.

Large toolbox can also store scarifier shanks.

Differential/Final Drive produces maximum traction when locked, reduced tire wear and increased maneuverability when unlocked; cab-operated lock/unlock.

4 outboard oil disc brakes with crossover dual circuits for even braking effort and added confidence; reserve capacity provided for emergency braking.

Transmission guard enclosed at rear to prevent filling; keeps out dirt when running in reverse over windrows.

Easy access to transmission and hydraulic filters, and to routine inspection areas.

1" x 8" Boron steel cutting edges with 6" bolt spacing.



Job-matched dependable Cummins diesel power offers superior fuel efficiency as the engine's peak torque is matched to transmission shift points. Optional side panels are lockable and provide easy access for routine maintenance.



The exclusive **Champion 8400** grader transmission is now in service in more than 10,000 units. Evenly proportioned gear ratios provide precise, job-matched speeds for any grading application. A new "Smart Shift" feature lets the operator easily customize shift patterns to the job at hand.

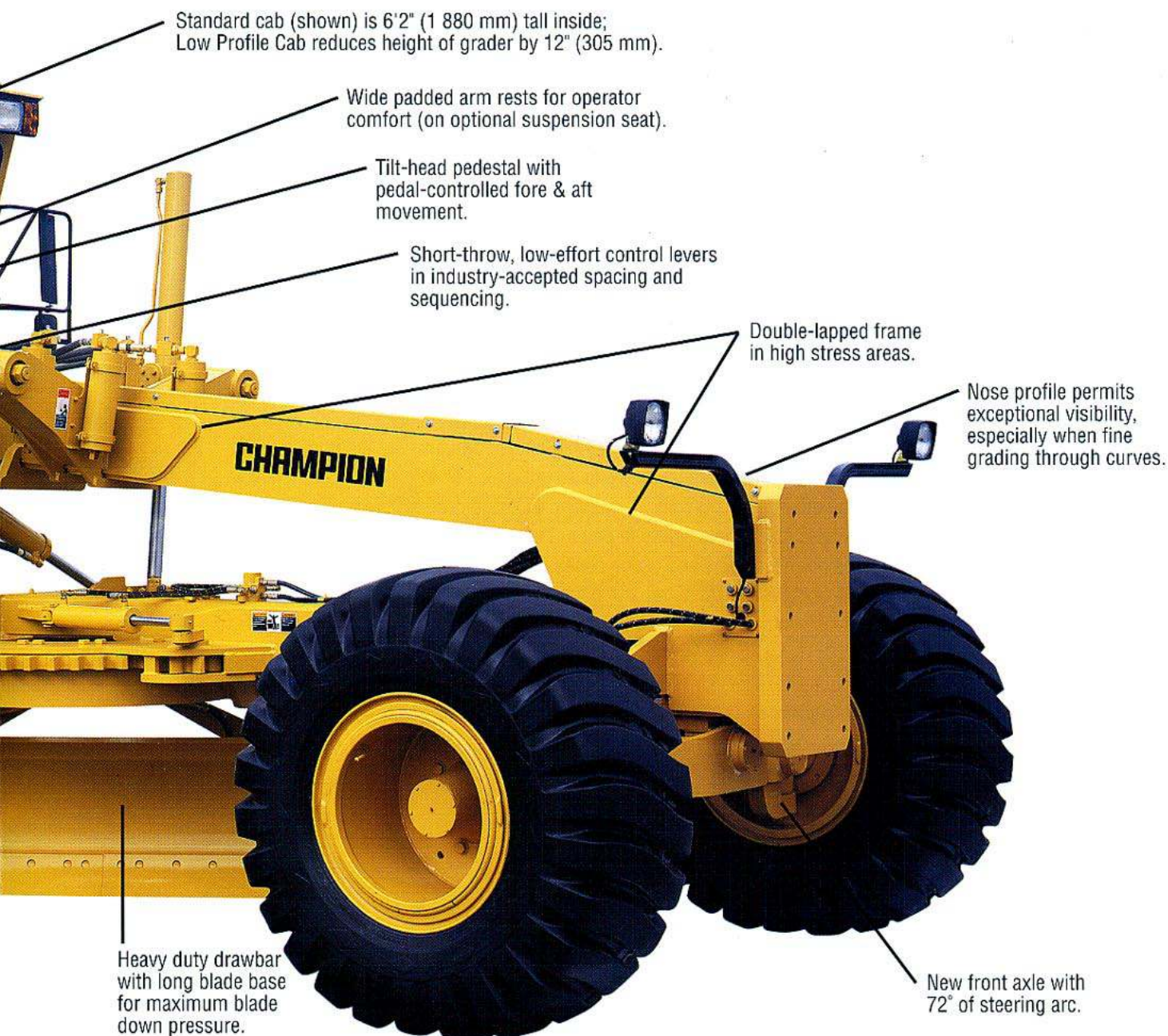


Series IV cab changes include a "sweep-out" cab floor, easy-to-use door releases and re-enforced door and window frames. Two-piece door glass design makes glass replacement easier and less costly than ever before!



Twin 5 inch diameter hydraulic cylinders articulate the frame 22°. The main hinge pins are 3" in diameter and are contained within sealed housings. Anti-drift lock valves ensure drift-free operation.





Standard cab (shown) is 6'2" (1 880 mm) tall inside;  
Low Profile Cab reduces height of grader by 12" (305 mm).

Wide padded arm rests for operator  
comfort (on optional suspension seat).

Tilt-head pedestal with  
pedal-controlled fore & aft  
movement.

Short-throw, low-effort control levers  
in industry-accepted spacing and  
sequencing.

Double-lapped frame  
in high stress areas.

Nose profile permits  
exceptional visibility,  
especially when fine  
grading through curves.

Heavy duty drawbar  
with long blade base  
for maximum blade  
down pressure.

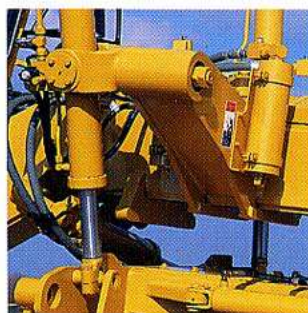
New front axle with  
72° of steering arc.



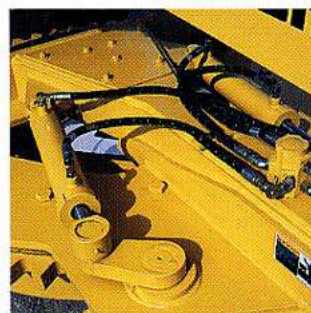
The 1 1/2" x 4" upper and lower  
slide rails are supported on one  
piece zinc alloy bearings providing  
superior wear life in arduous  
applications.



Pedestal includes a 3-level  
electronic monitor to alert operator  
to machine status, with backlit  
switches and fuel level, engine oil  
pressure and engine coolant  
temperature gauges.



Rugged design of the standard  
fixed-point blade lift system  
provides fewer moving  
components for low maintenance.



Patented dual-cylinder circle drive  
uses direct-acting hydraulics for  
exceptional turning and holding  
power under full load. Circle drive  
system is protected against impact  
damage by an overload cushion  
valve as standard equipment.



# Give the job to a Champion

**Series IV graders are designed to work better with you... and they're equipped to do more for you!**

With their all-new closed center load-sensing hydraulics, Series IV graders achieve a new level of precision and responsiveness for fine grading control. The system senses the load requirement of the hydraulic functions, including steering, and maintains the system pressure 250 psi (17,25 Bar) above the load. When hydraulic power is not required, standby pressure is held at just 90 psi (6,2 Bar), to improve fuel efficiency and reduce heat. Valve spool metering ensures precise blade control, while the variable flow pump maintains consistent hydraulic speed at all engine RPMs and in multiple function operations.

With its 72° front axle steering arc, Series IV moves comfortably in confined work areas. The tight turning radius means faster finishing in cul-de-sacs and less following-up in the corners.

When push comes to shove, there's simply no grader anywhere that gives you more raw strength for cutting into the toughest jobs. Series IV heavy-duty graders match extra power with extra reinforcement where you need it most. The circle takes a wide, powerful stance for performance – it spreads out over 66" in diameter and the top plate is fully 2" thick. Hardened teeth are cut on the outside for maximum leverage and minimum wear. With 5 adjustable clamp plates and 5 adjustable guide shoes, the circle is held firmly in place. This provides even distribution of the load over the entire circle. DURAMIDE™ facings on the clamps and guide shoes eliminate metal-to-metal contact, so the "business end" of your grader spends less time in the shop and more time on the job.

**From its heavy-duty front axle to its reinforced tandem case, Series IV is the answer to tough grader applications.**

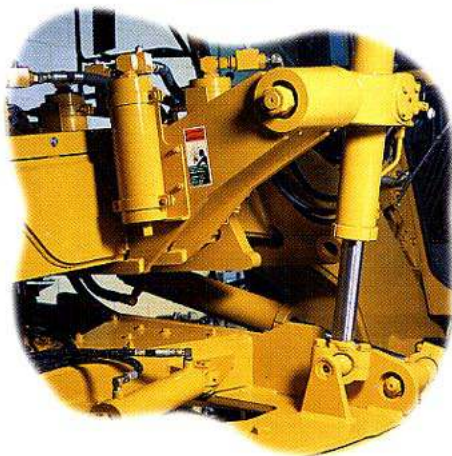
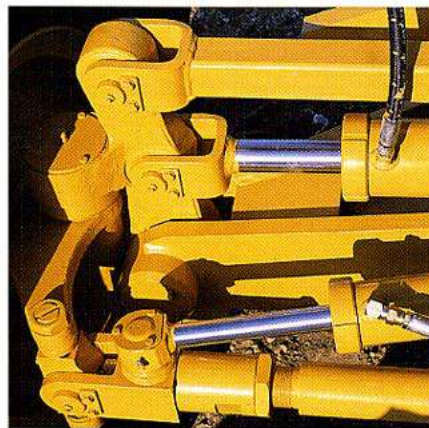






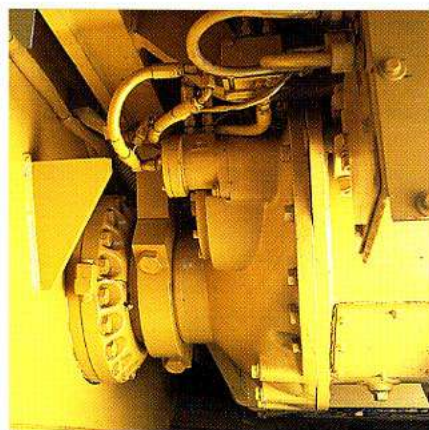
◀ The main hydraulic/steering pump is a load-sensing gear-type pump chosen for extended service life and low replacement cost. Gear type pumps are more tolerant of fluid contamination, perform better in cold weather, and are easier to service than piston pump designs.

High load-carrying capacity is achieved by supporting the front axle on a 3" diameter oscillation pin; the widely spaced sealed bearings ensure that the load is distributed evenly for long-term durability. Straddle-mounting the twin 4" wheel lean cylinders also evens out the distribution of applied loads; the circuit includes an anti-drift lock valve as standard equipment. ▶



◀ The heavy-duty 2 1/2" piston rods provide maximum strength to Series IV blade lift cylinders for tough applications like mining and forestry. Standard equipment includes nitrogen precharged piston accumulators to absorb impact loads; isolation valves ensure rock-steady blade control in fine grade applications where shock protection is not needed.

With Series IV, the final drive features an operator-controlled lock/unlock differential. Internal gusseting in the tandem case resists torsional stresses, while the mounting and 1" thick inner wall resists flexing from side loads in severe applications. ▶





## SPECIFICATIONS: 780A



### OPERATING WEIGHT (Standard Equipment)

Weights shown include full cab with ROPS, all operating fluids and operator.

Total ..... 40,600 lbs. (18 416 kg)  
On front wheels ..... 12,160 lbs. (5 516 kg)  
On rear wheels ..... 28,440 lbs. (12 900 kg)

Weight adjustments for various options are listed.

**Typically equipped operating weight:** Includes 20.5 x 25, 12 pr., L2 tires on 17" (432 mm) rims, and 16' x 31" x 1" (4 877 mm x 787 mm x 25 mm) moldboard.

- with rear-mounted Ripper-Scarifier and 9' (2 743 mm) dozer blade ..... 45,240 lbs. (20 521 kg)



### PRODUCTIVITIES (Standard Equipment)

Maximum blade pull (no wheel slip) ..... 25,596 lbs. (11 610 kg)

Blade down pressure

- cutting capability (ISO 7134) ..... 21,521 lbs. (9 639 kg)  
- compaction capability ..... 23,189 lbs. (10 519 kg)

Blade down pressure is the maximum downward force which may be applied at the cutting edge.



### ENGINE DATA

Make/Model ..... Cummins LT-10-C  
Type ..... 4 Cycle, Turbocharged  
No. of cylinders ..... In Line 6  
Bore & stroke ..... 4.921 x 5.354 in. (125 x 136 mm)  
Displacement ..... 611 cu. in. (10 L)  
Rated gross brake horsepower @ 2100 RPM ..... 215 hp (160 kW)  
Rated net brake horsepower @ 2100 RPM ..... 200 hp (150 kW)  
Peak torque @ 1300 RPM ..... 630 lb. ft. (854 Nm)

Engine equipped with a two stage, dual element, dry-type air cleaner with evacuator and dash-mounted service indicator. 24 volt starting and electrical system with 75 amp (1800 watt) brushless alternator with internal voltage regulator. Two heavy duty 12 volt maintenance-free batteries with 900 cold cranking amps (CCA) and 160 minutes reserve capacity per battery. System includes battery disconnect.

Performance: Rated net brake horsepower SAE standard J1349/ISO 3046-2 conditions with water pump, lubricating oil pump, fuel system, air cleaner, muffler, alternator, and cooling fan.



### TRANSMISSION

Make/Model ..... Champion 8400  
Fully sequential, direct drive, powershift transmission. Engine can not be started if transmission is in gear. Transmission controller contains an electronic self-diagnostic feature. The flywheel-mounted, multi-disc master clutch is oil-cooled for long life.

Ground speeds at 2100 RPM with standard tires:

| Forward |      |      | Reverse |      |      |
|---------|------|------|---------|------|------|
| Gears   | mph  | km/h | Gears   | mph  | km/h |
| 1       | 2.3  | 3.7  | 1       | 2.3  | 3.7  |
| 2       | 3.3  | 5.3  |         |      |      |
| 3       | 4.5  | 7.2  | 2       | 4.5  | 7.2  |
| 4       | 6.3  | 10.1 |         |      |      |
| 5       | 8.9  | 14.3 | 3       | 8.9  | 14.3 |
| 6       | 12.5 | 20.8 |         |      |      |
| 7       | 17.3 | 27.8 | 4       | 17.3 | 27.8 |
| 8       | 24.1 | 38.8 |         |      |      |

Heavy duty transmission guard is standard equipment and is hinged for easy access.



### DIFFERENTIAL / FINAL DRIVE

Make/Model ..... Champion Twin Bull Gear  
Double reduction final drive with an operator controlled lock/unlock differential. Rear axles are case hardened, full floating design, supported on double row spherical roller bearings.



### TANDEMS

Oil-tight, oscillating tandem case has internal gusseting for maximum torsional strength. Field proven split ring/flanged sleeve tandem mounting and 1" thick inner wall resists flexing from side loading during severe applications. Drive chain sized for long life.

Depth ..... 24.5" (622 mm)  
Width ..... 8.25" (210 mm)  
Thickness - inner wall ..... 1.0" (25 mm)  
                  - outer wall ..... 0.75" (19 mm)  
Center distance ..... 65.5" (1 657 mm)  
Drive chain pitch ..... 2.0" (51 mm)  
Oscillation ..... ±15°



### BRAKES

Service Brakes: Foot Operated

Fade resistant, hydraulically actuated, oil disc service brakes located at the four (4) tandem drive wheels are self-adjusting, fully sealed and maintenance-free. System features cross-over dual braking circuits for even braking on both sides of the grader. Includes reserve power assist and operator warning system (visual and audible).

Parking Brake: Hand Operated

Independent, disc-type hand brake on transmission output shaft and effective on all four (4) tandem drive wheels. Includes visual and audible operator warning system for parking brake on, transmission in gear condition.

Braking systems to: SAE Recommended Practice J1473 OCT. 90, and J1152 APR. 80; ISO 3450-1993-01-28. Champion uses asbestos-free brake components.



### WHEELS & TIRES (Standard Equipment)

Tire size ..... 16.00 x 24, G-2  
Ply rating (pr.) ..... 12  
Rim size ..... 10.0" (254 mm)  
Bolt-on rims are interchangeable front and rear.



### FRONT AXLE

Type ... Fully welded steel truss, gusseted for torsional strength oscillates on a single 3" (76 mm) diameter centre pivot pin  
Wheel lean ..... 18° R & L  
Oscillation ..... 16° up and down  
Ground clearance ..... 27.5" (698 mm)  
Twin 4" (102 mm) diameter wheel lean cylinders with lock valve is standard equipment.



### STEERING

Hydraulic power front wheel steering incorporating two steering cylinders. Full power assist supplemental steering, meets SAE J53 OCT. 84.

Minimum turning radius using front axle steering, wheel lean and unlocked differential:

..... 25.5" (7 747 mm)  
Steering arc ..... 72°  
Frame articulation angle ..... 22°  
Articulation lock standard.



### FRAME

Full front and rear frame sections. First user lifetime frame warranty.

**Front:** Fully welded box section. Double-lapped in high load areas. Lowered nose plate on front frame provides the best visibility in the industry to the front of the grader.

Minimum dimensions of box section ..... 10.0" x 12.0" (254 mm x 305 mm)  
Plate thickness ..... 3.0" & 0.75" (76 mm & 19 mm)

Vertical section modulus (min.-max.) ..... 166-293 cu.in. (2 720-4 801 cm³)  
Linear weight (min.-max.) ..... 132-288 lbs/ft (196-429 kg/m)

**Rear:** Full rear frame permits modular powertrain mounting for ease of service and simplifies attachment mounting.

Minimum dimensions of rear frame ..... 4.0" x 11.0" (102 mm x 279 mm)  
Plate thickness ..... 3.0" & 0.75" (76 mm & 19 mm)

Articulates behind cab. Twin 5" (127 mm) hydraulic cylinders articulate frame 22° right and left. Anti-drift lock valve ensures stable operation.



### CIRCLE

Hardened teeth, cut on outside of circle for maximum leverage and minimum wear. Circle is machined after welding to ensure flatness. The circle is held positively in place



at 10 points by five adjustable clamp plates and five adjustable guide shoes providing optimum circle support and load distribution. The primary set of clamps and guide shoes is located at the front of the circle where greatest loading occurs. DURAMIDE-faced clamp and guide shoes prevent metal to metal contact. DURAMIDE is a synthetic material that extends service life and reduces maintenance requirements.

Diameter ..... 66.62" (1 692 mm)  
Thickness ..... 2.0" (51 mm)  
Adjustable guide shoes ..... 5  
Adjustable clamp plates ..... 5



### CIRCLE DRIVE

Champion's patented dual cylinder circle drive system uses direct-acting hydraulic power for exceptional turning and holding capability under full load. Circle drive system is fully protected against impact damage by an overload cushion valve as standard equipment.

Hydraulic drive cylinders ..... 2  
Points of leverage ..... 2  
Rotation ..... 360° continuous



### DRAWBAR

Fully welded box section. Narrow 'T' design permits optimum visibility to the work area. Drawbar connection provides an adjustment to compensate for different tire sizes. Blade lift cylinder anchors are straddle-mounted on drawbar to provide maximum strength and support.

Dimensions of box section ..... 6.5" x 6.5"  
(165 mm x 165 mm)  
Plate thickness ..... 1.5" & 0.75"  
(38 mm & 19 mm)



### MOLDBOARD

Standard moldboard  
with replaceable end bits ..... 14' x 31" x 1"  
(4 267 mm x 787 mm x 25 mm)  
Blade material ... SAE 1050 high carbon steel  
Edge: through hardened ..... 8" x 1"  
(203 mm x 25 mm) boron steel  
Drilling - 6" ... Bolt diameter - 3/4"  
Slide rails supported with adjustable Za12  
(Zinc aluminum) bearings for maximum  
wear resistance.

### BLADE RANGE: FIXED POINT LIFT SYSTEM (Standard)

(Dimensions shown with standard moldboard)  
Reach outside tires  
- articulated frame ..... 138.0" (3 505 mm)  
Blade slide ..... 53.5" (1 359 mm)  
Circle side shift ..... 17.5" (445 mm)  
Blade ground clearance .... 18.5" (470 mm)  
Blade cutting depth ..... 25.0" (635 mm)  
Blade tilt range ..... 46° forward; 13° back  
Number of moldboard tilt cylinders ..... 2  
Bank sloping angle ..... 90°



### CAB & CONTROLS

Operator noise exposure is limited to 82 dB(A) per SAE J919 JUNE 86 (enclosed cab). Located in the pedestal head is the engine oil pressure, coolant temperature and

fuel level gauges and a three-level electronic monitoring system. Pedestal located switches include: differential lock/unlock, independent moldboard floats (optional) and combination turn signal, hazard lights, and high beam headlight switch. Heater and wiper/washer controls, lighting and accessory switches are grouped in the operator's right hand console. This console also contains the ignition key and access to the circuit breaker panel. An accelerator/decelerator foot pedal and slider type hand throttle are standard equipment. Cab door opening and closing is easy from either a seated position or while entering and exiting. Fixed front window enhances visibility by reducing window frame width.

### Full Height Cab with ROPS INSIDE DIMENSIONS:

Height ..... 74.0" (1 880 mm)  
Width @ controls ..... 56.0" (1 422 mm)  
Depth @ controls ..... 55.5" (1 410 mm)

An optional Low Profile Cab is available with an inside height of 62" (1 575 mm). All Champion cabs and canopies are designed to meet or exceed SAE J1040 APR. 88, ISO 3471/1-1986(E), and 86/295/EEC ROPS requirements. The seat belt is 3" (76 mm) wide and meets SAE J386 JUNE 93; ISO 6683-1981(E). A cushioned vinyl covered bucket seat with fore & aft and height adjustment is standard.



### LOAD SENSING HYDRAULICS

Closed center hydraulic system senses load requirements and maintains system pressure 250 psi (17,25 Bar) above the load.

When hydraulic pressure is not required, system pressure is only 90 psi (6,2 Bar). Low standby pressure improves fuel-efficiency and reduces heat generation.

System incorporates lock valves to prevent cylinder drift under load in the following circuits: blade lift, moldboard tilt, circle shift, wheel lean, articulation and scarifier. All hoses and fittings are equipped with 'O' ring seals to eliminate leaks.

Pump design features include cast iron end covers and center housing, and a one-piece gear and shaft assembly to ensure reliability and a service life exceeding that of most piston pumps.

Maximum pressure ..... 2,500 psi (172 Bar)  
Output at 2100 RPM ..... 0-48.2 gpm  
(0-182 lpm)  
Filtration ..... 7 micron spin-on type



### CAPACITIES

|                                  | U.S. Gal. | Imp. Gal. | Litres |
|----------------------------------|-----------|-----------|--------|
| Fuel Tank.....                   | 100.0     | 83.3      | 378.5  |
| Transmission .....               | 10.2      | 8.5       | 38.8   |
| Final drive .....                | 9.0       | 7.5       | 34.0   |
| Tandems (ea.).....               | 27.7      | 23.1      | 105.0  |
| Hydraulic oil tank.....          | 23.8      | 19.8      | 90.0   |
| Coolant Antifreeze protection to |           |           |        |
| -58° F (-50° C).....             | 10.8      | 9.0       | 40.8   |
| Engine oil.....                  | 10.3      | 8.6       | 39.0   |

### STANDARD FEATURES:

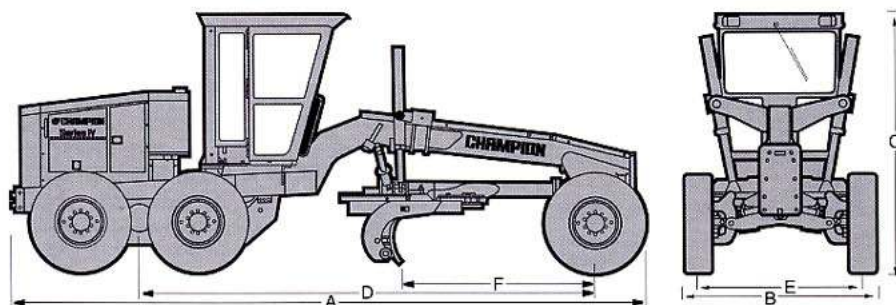
- Operator controlled, lock/unlock differential final drive
- 4-wheel, cross-over, dual braking system with reserve power assist
- Ratchet-type park brake with operator warning alarm and indicator
- Fully-sequential, powershift 8400 transmission, with guard
- 13.5" diameter, 4-plate, full oil clutch for operator control
- Full front and rear frame sections designed to absorb shock loading of attachment use
- First user lifetime frame warranty
- Cushion valve circle drive protection to minimize impact damage
- Hardened circle teeth cut on outside of circle for maximum wear resistance
- Isolation-mounted cab, transmission and engine for reduced noise and vibration
- Adjustable steering pedestal with tilt head for maximum operator comfort
- Gauges include: coolant temperature, engine oil pressure, fuel, hourmeter, dash-mounted air cleaner service indicator, articulation angle indicator, three-level electronic monitoring system - M4 - with visual and audible warnings
- Load-sensing, closed-center hydraulic system with short-throw, low effort control levers, positioned in the industry-accepted arrangement. Hydraulically operated blade lift, circle turn, moldboard slide and tilt, circle shift and wheel lean functions.
- 100 gallon fuel capacity
- Horn
- Hinged radiator guard for easy trash clean out. Engine compartment fan guard included.
- Back-up alarm with automatic volume level
- Painted Champion Yellow
- Lockable tool box with storage space for scarifier shanks

### OPTIONAL EQUIPMENT (May vary)

|                                    | lbs.  | kg   |
|------------------------------------|-------|------|
| Air conditioner - 21,500 BTU       |       |      |
| - HFC-134a (non-CFC refrigerant)   |       |      |
| with cab pressurizer/filter .....  | 130   | 59   |
| Battery warmer .....               | 5     | 2    |
| Brush guards .....                 | 40    | 18   |
| Cab                                |       |      |
| - canopy shell with ROPS           |       |      |
| - deduct .....                     | (200) | (91) |
| - low profile cab with ROPS        |       |      |
| - deduct .....                     | (200) | (91) |
| Cab heater - 49,000 BTU.....       | 30    | 14   |
| Cab pressurizer/filter .....       | 14    | 6    |
| Defroster fan .....                | 3     | 1    |
| Engine block heater.....           | 3     | 1    |
| Engine precleaner - Turbo II ..... | 6     | 3    |
| Engine side panels .....           | 50    | 23   |
| Ether cold start .....             | 10    | 4    |



| OPTIONAL EQUIPMENT (cont'd)           |     | lbs. | kg |  | lbs. | kg |  | lbs.                                     | kg      |
|---------------------------------------|-----|------|----|--|------|----|--|--|---------|
| Exhaust rain cap.....                 | -   | -    | -  | Machine Monitor Plus package - M44         |      |    |  | Remote valve for attachments             |         |
| Fan - blower type                     | -   | -    | -  | - Audible and visual warnings for          |      |    |  | - 3 or 5 bank - remote mount.....        | 25 11   |
| (suction type is standard) .....      | -   | -    | -  | transmission and hydraulic filter          |      |    |  | Suspension seat .....                    | 55 25   |
| Float control - Right and Left        |     |      |    | restriction, low engine oil pressure, high |      |    |  | Tie-down brackets .....                  | 100 45  |
| independent, electric .....           | 15  | 7    |    | coolant temperature, high transmission     |      |    |  | Tires                                    |         |
| Hub odometer .....                    | -   | -    | -  | temperature, and low transmission clutch   |      |    |  | - 20.5 x 25, 12 pr., TL, L2 or L3,       |         |
| Hydraulic tank heater .....           | 3   | 1    |    | pressure.....                              | -    | -  |  | 17" (432 mm) rims .....                  | 590 268 |
| Jack - 20 ton (18.5 tonne) .....      | 35  | 16   |    | Mirrors - outside - right .....            | 2    | 1  |  | Tire chains - pair .....                 | 300 136 |
|                                       |     |      |    | - left.....                                | 2    | 1  |  | Tool kit .....                           | - -     |
| Lights                                |     |      |    | Moldboards                                 |      |    |  | Transmission sump heater .....           | - -     |
| - back-up lights - 2 .....            | -   | -    | -  | - 16' x 31" x 1"                           |      |    |  | Tropical protection .....                | - -     |
| - beacon (amber or blue) .....        | 4   | 2    |    | (4 877 mm x 787 mm x 25 mm) 300            | 136  |    |  | Vandalism protection .....               | 8 4     |
| - clearance lights front & rear ..... | 2   | 1    |    | Moldboard extensions R & L                 |      |    |  | Wheel weights front or rear              |         |
| - direction signals .....             | -   | -    | -  | - 2' (610 mm) .....                        | 200  | 91 |  | - each .....                             | 250 113 |
| - front-mounted plow lights - 2       |     |      |    | Moldboard edges -Carbide 3/4" x 5" ..      | -    | -  |  | Window -opening - lower front .....      | - -     |
| - high .....                          | 120 | 54   |    | Operator convenience package               |      |    |  | Window - opening sliders - left/right .. | - -     |
| - low .....                           | 100 | 45   |    | - lunch box, steel vacuum bottle           |      |    |  | Wiper and washer - front .....           | - -     |
| - Headlights with dimmer switch.....  | -   | -    | -  | and holder, ash tray .....                 | 10   | 5  |  | Wiper and washer - rear.....             | - -     |
| - Moldboard lights - 2 .....          | 2   | 1    |    | Paint - custom colors.....                 | -    | -  |  | Wiper and washer - lower front           |         |
| - Rear flood lights - 2 .....         | 2   | 1    |    | Radiator shutters - hinged .....           | 10   | 4  |  | windows.....                             | - -     |
| - Snow wing lights - 2 .....          | 2   | 1    |    | Reflectors - rear .....                    | -    | -  |  |  |         |



#### DIMENSIONS

|                              |                  |
|------------------------------|------------------|
| A Overall length.....        | 28'6" (8 687 mm) |
| B Overall width.....         | 9'2" (2 794 mm)  |
| C Overall height with cab .. | 11'6" (3 505 mm) |
| - with Low Profile Cab ...   | 10'6" (3 200 mm) |
| D Wheelbase .....            | 20'6" (6 248 mm) |
| E Tread width .....          | 7'7" (2 311 mm)  |
| F Blade base                 |                  |
| - ISO 7134 .....             | 8'11" (2 718 mm) |
| - compaction.....            | 9'9" (2 972 mm)  |

#### CHAMPION MATCHED ATTACHMENTS

|                       |                     |                              |                       |                         |                       |
|-----------------------|---------------------|------------------------------|-----------------------|-------------------------|-----------------------|
| A-Frame .....         | 850 lbs. (386 kg)   | One-way plow .....           | 2,350 lbs. (1 067 kg) | V plow                  |                       |
| Dozer blade           |                     | Push block .....             | 700 lbs. (318 kg)     | - 9' (2 743 mm) .....   | 2,560 lbs. (1 161 kg) |
| - 8' (2 438 mm) ..... | 1,600 lbs. (726 kg) | Ripper-scarifier, rear ..... | 2,100 lbs. (953 kg)   | - 10' (3 048 mm) .....  | 2,720 lbs. (1 234 kg) |
| - 9' (2 743 mm) ..... | 1,650 lbs. (749 kg) | Snow wing                    |                       | Windrow eliminator..... | 1,300 lbs. (590 kg)   |
|                       |                     | - rear-mounted.....          | 3,100 lbs. (1 407 kg) |                         |                       |

Specifications subject to change without notice. Some items included in this brochure are optional.  
<sup>TM</sup> DURAMIDE is a registered trademark of Champion Road Machinery Limited.  
 Your safety and the safety of those around you depends on using care and judgement when operating and servicing your grader. Do not operate the grader until you read and understand the warnings and instructions in the operator's manual.



CANADA  
 Goderich, Ont.

© 1994 Champion Road Machinery Limited