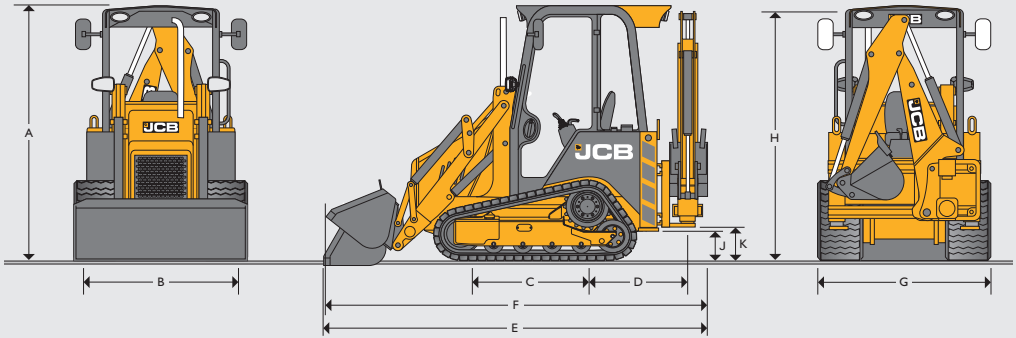
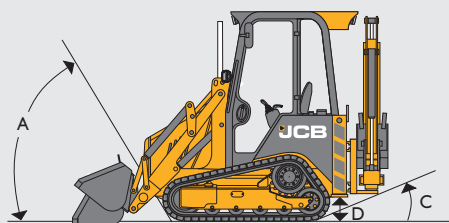


STATIC DIMENSIONS



			ICXT (320 mm)
A	Cab roof height	ft-in (m)	7-4 (2.23)
B	Overall width (over shovel)	ft-in (m)	5-11 (1.8)
C	Axle centerline distance	ft-in (m)	-
D	Slew center to rear axle center distance	ft-in (m)	-
E	Total travel length	ft-in (m)	11-9 (3.57)
F	Total travel length – shovel in carry position	ft-in (m)	11-5 (3.47)
G	Rear frame width (over stab leg feet)	ft-in (m)	5-11 (1.8)
H	Total travel clearance (fixed dipper)	ft-in (m)	7-3 (2.2)
	Total travel clearance (extending dipper)	ft-in (m)	7-5 (2.27)
J	Stabilizer feet clearance	ft-in (m)	0-10 (0.26)
K	Kingpost clearance	ft-in (m)	1-1 (0.32)
	Track set footprint	ft² (m²)	9 (0.85)

GROUND LINE ANGLES



		ICXT
A	Approach angle	degrees 60
C	Departure angle	degrees 23
D	Ground clearance	ft-in (m) 0-10 (0.26)

ENGINE

		ICXT - All models
Emissions standard		Tier 4 Final compliant
Manufacturer		Perkins 404F-E22T
Aspiration		Turbocharged
Displacement	liters	2.2
No. of cylinders		4
Rated engine	RPM	2,800
Power ratings		
Rated ISO 14396 (SAE J1995 Gross)	hp (kW)	49 (36.3)
Max. torque @ 1,800 RPM	lb-ft (Nm)	122 (165)
Fuel type		Diesel
Fuel filter		Replaceable cartridge plus water/sediment separator prefilter
Air cleaner		Dual element
Oil filter and lubrication		Full flow, spin-on type filter. Engine oil service intervals 500 hours
Cooling system		Water, hot climate specification. Pressurised 1.0 bar, pusher fan. Pressurised tank with integral filler neck and overflow tank.

ELECTRICAL AND INSTRUMENTATION

Gauges	Fuel Level, hour meter
Warning system	Audible and visual system. Ignition, working lights, park brake, alternator, main beam, engine oil pressure, water temp.
Battery	72A/hour
Pre-wire	Beacon
Horn	Controlled from both front and rear
Alternator	50 amp standard (85A alternator on the A/C option)
Front working lights	2 adjustable
Rear working lights	2 adjustable

TRANSMISSION

	ICXT
Manufacturer	Danfoss / Rexroth
Type	Hydrostatic
Travel speeds	ICXT 0-4.6 mph (7.5 km/h) forward & reverse

OPERATING WEIGHTS

		ICXT
		Long Arms
Fixed dipper	lb (kg)	9,396 (4,262)
Extended dipper	lb (kg)	9,572 (4,342)

SERVICE CAPACITIES

		ICXT
Hydraulic system including tank	gal (L)	11.8 (45)
Fuel tank	gal (L)	11.8 (45)
Chain cases	gal (L)	2.6 (10)
Cooling system	gal (L)	2.1 (8)
Engine oil with filter	gal (L)	2.5 (9.6)

HYDRAULIC SYSTEM

		ICXT HF
Open center systems (gear pump) @2,800 RPM services	gpm (l/min)	11.8 (45)
Open center systems (gear pump) @2,800 RPM HF	gpm (l/min)	26.4 (100)
System relief pressure Manual	psi (bar)	3,002 (207)
System relief pressure EasyControls	psi (bar)	3,190 (220)

LOADER DIMENSIONS

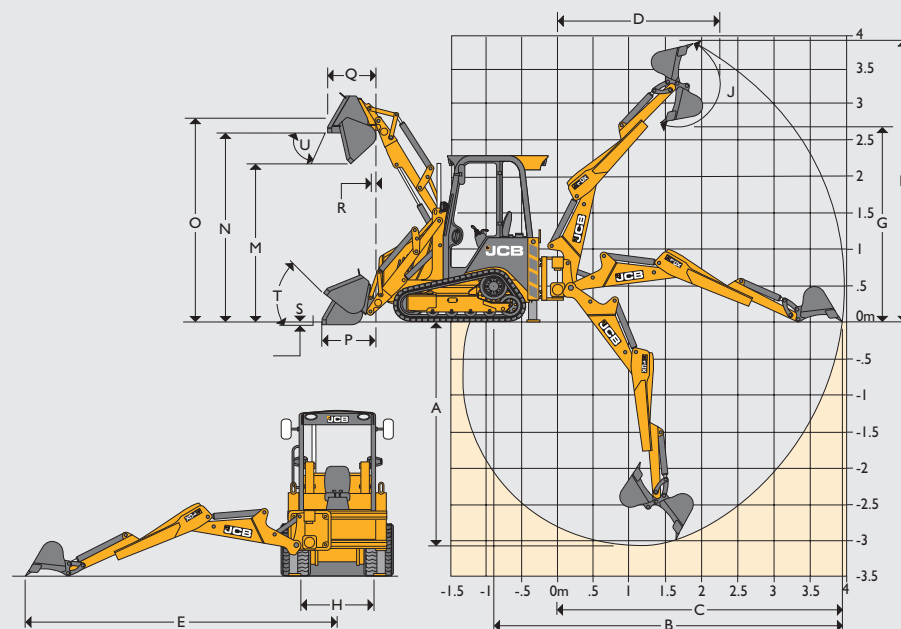
			ICXT
			Long Arms
M	Dump height	ft-in (m)	7-3 (2.21)
N	Load-over height	ft-in (m)	8-8 (2.65)
O	Loader hinge pin height	ft-in (m)	9-5 (2.86)
P	Reach at ground (toe plate horizontal)	ft-in (m)	4-8 (1.41)
Q	Max. reach at full height	ft-in (m)	2-5 (0.74)
R	Reach at full height fully dumped	ft-in (m)	1-4 (0.4)
S	Dig depth (toe plate horizontal) clearance	ft-in (m)	0-2 (0.05)
T	Roll back at ground	degrees	42
U	SAE dump angle	degrees	43
	SAE loader breakout – shovel	lbf (kgf)	5,180 (2,350)
	SAE max. hydraulic lift capacity	lbf (kgf)	2,204 (1,000)
	Shovel capacity	ft ³ (m ³)	12 (0.36)

LOADER PERFORMANCE

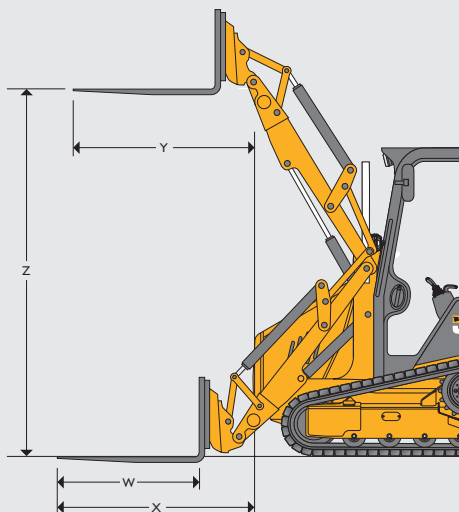
			ICXT
			6-in-1 shovel
Loader breakout – shovel	lbf (kgf)		5,180 (2,350)
Loader breakout – arms	lbf (kgf)		5,291 (2,400)
Tipping load	lb (kg)		4,188 (1,900)
Payload rating as a percentage of tipping load	%		35
Rated operating capacity	lb (kg)		1,466 (665)
*Rated operating capacity as determined according to ISO 14397: 2007			Includes extending dipper

BACKHOE DIMENSIONS

			ICXT	
			Fixed Dipper	Extended Dipper
A	SAE max. dig depth	ft-in (m)	8-4 (2.55)	10-1 (3.08)
	SAE max. dig depth 2ft flat bottom	ft-in (m)	8-2 (2.49)	9-11 (3.02)
B	Reach – ground level to rear wheel center	ft-in (m)		
C	Reach – ground level to slew center	ft-in (m)	11-1 (3.38)	12-10 (3.91)
D	Reach – at full height to slew center	ft-in (m)	5-10 (1.79)	7-3 (2.22)
E	Side reach – to centerline of machine	ft-in (m)	12-7 (3.83)	14-3 (4.35)
F	SAE operating height	ft-in (m)	11-3 (3.44)	12-8 (3.86)
G	Max. loadover height	ft-in (m)	7-9 (2.35)	8-9 (2.67)
H	Total kingpost travel	ft-in (m)	3-11 (1.19)	3-11 (1.19)
J	Bucket rotation	degrees	202	180
	Bucket tearout	lbf (kgf)	4,852 (2,201)	4,852 (2,201)
	Dipper tearout	lbf (kgf)	3,280 (1,488)	3,280 (1,488)



LOADER ATTACHMENTS – FORKLIFT PERFORMANCE DATA



			ICXT
Quick-hitch mounted forks			Long Arms
W	Forks – tine length	ft-in (m)	3-5 (1.05)
	Forks – tine width	ft-in (m)	0-3 (0.08)
X	Forks reach at ground level	ft-in (m)	5-3 (1.6)
Y	Forks reach at full height	ft-in (m)	4-7 (1.4)
Z	Forks lift height – max.	ft-in (m)	9-3 (2.82)
	Fork spacing – min.	ft-in (m)	0-8 (0.2)
	Fork spacing – max.	ft-in (m)	3-5 (1.03)
	Tipping Load @ 500 mm load centers fixed dipper	lb (kg)	2,334 (1,059)
	SWL @ 500 mm load centers fixed dipper	lb (kg)	815 (370)
	Tipping Load @ 500 mm load centers extending dipper	lb (kg)	2,502 (1,135)
	SWL @ 500 mm load centers extending dipper	lb (kg)	875 (397)
	Payload rating as a percentage of tipping load ISO 14397-1	%	35

OPTIONAL ACCESSORIES

Machine model	ICXT
Tracks	320 x 86 x 4300
Controls	EasyControls in joysticks SAE/ISO or Switchable SAE/ISO
Machine features	Fully glazed ROPS/FOPS cab, road lights, face level fan, external mirrors, fire extinguisher, air filter pre-cleaner.
Machine and site protection	Flashing beacon, reverse alarm, large stabilizer feet, stabilizer street pads, front screen guard.
Attachments	Front loader auxiliary circuit, front shovel float, auxiliary, excavator bucket quickhitch, hammer/bi-directional auxiliary circuit, pallet forks and frame.

NOISE & VIBRATION LEVELS

		ICXT
Internal	dB(A)	82
External	dB(A)	101
Vibration	Hand arm vibration does not exceed 2.5m/s ² for all duties with the exception of rough road tracking which averages 3.4m/s ² Whole body vibration 0.29m/s ²	

LOADER ATTACHMENTS – DIRECT MOUNT

			ICXT
		GP shovel	6-in-1 shovel
		Capacity SAE	Capacity SAE
Width in (mm)		Rated ft ³ (m ³)	Rated ft ³ (m ³)
62 (1,580)		N/A	N/A
71 (1,800)		13 (0.37)	12.7 (0.36)

BACKHOE ATTACHMENTS – STANDARD PROFILE BUCKET

		ICXT			
Width in (mm)		Capacity SAE		Weight (+ Teeth)	
		Rated ft ³ (m ³)	Struck ft ³ (m ³)	lb (kg)	Teeth
9 (230)		1 (0.03)	0.7 (0.02)	112 (51)	2
12 (305)		1.4 (0.04)	1.4 (0.04)	114 (52)	3
18 (460)		2.1 (0.06)	1.7 (0.05)	119 (54)	3
24 (610)		2.8 (0.08)	2.1 (0.06)	125 (57)	4

DITCHING BUCKETS

		ICXT		
		Capacity SAE		Weight
Width in (mm)		Rated ft ³ (m ³)	Struck ft ³ (m ³)	lb (kg)
39 (1,000)		4.2 (0.12)	3.5 (0.1)	114 (52)