

SCHULTE®

R O C K W I N D R O W E R S

SRW-1400/1400-H • SRW1000 • SRW-800 • SMR-800 • SMR-600



World Class *Built to Last*

schulte.ca

SRW-1400/SRW-1400-H Windrowers

14' Windrower forms Convenient Rows for Rock Picking



The SRW-1400 Pivoting Rock Windrower employs a side delivery frame which allows the operator to better control the size of windrows, regardless of rock conditions. The windrower's floating drum arrangement allows the wheels to be placed closer to the windrower drum, resulting in excellent ground following characteristics.

Optional Gravel reclamation configuration is a good fit for rural municipalities and counties to reclaim gravel from roadsides. Save money by using your grader to bring the gravel in off the shoulder and then using the Schulte SRW-1400 Pivoting Rock Windrower to spread the ridge smoothly and evenly.

Power is supplied to the SRW-1400 windrower drum via a heavy duty, 540 RPM, PTO driveline which includes a slip clutch and shear bolt arrangement for protection against excessive shock loads. The SRW-1400-H is Hydraulically powered and both have #100 drive chains.

The windrower drum is 14' (4.27m) wide and is constructed of 8 5/8" (219mm) heavy wall HSS round tube.

Hardened 450, hard surfaced, steel are 5/8 inch (15.9mm) thick x 6 inch (152.4mm) long. Reversible, replaceable teeth are bolted to the drum pipe, resulting in problem-free operation even in difficult conditions.



Bolt-On Replaceable Teeth



Narrow Transport Width



SRW-1400 doing gravel reclamation



SRW-1400-H Features a hydraulic chain drive system



SRW-1000 Windrower

Roto-Tilling Action Breaks Lumps & Levels the Ground

Windrows 2" to 25" rocks with ease, forming them into neat uniform rows.

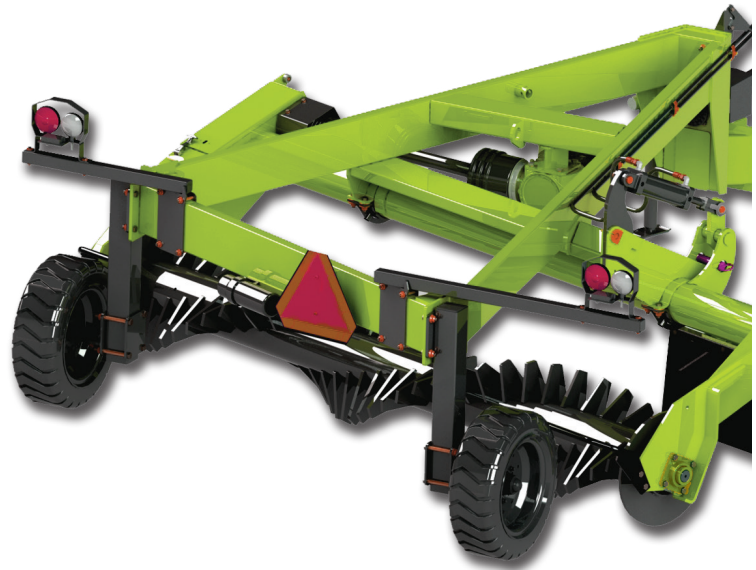
Power is supplied to the windrower drum via a heavy duty PTO driveline which includes a slip clutch and shear bolt arrangement for protection against excessive shock loads.

The final drive chain is totally enclosed for longer service life. The windrower drum is 10' (3.05m) wide and is constructed of 8 5/8" (219mm) heavy wall HSS tube.

Hard surfaced, 5/8" (15.9mm) x 6" thick (152.4mm) long teeth are welded directly to the drum pipe, resulting in problem-free operation even in difficult conditions.

Good choice for RM's and Counties for gravel reclamation.

Cat III hitch configuration available, perfect for larger hp tractors such as RM's and County fleets.



SRW-800 Windrower

Multi Purpose 3-Point Hitch Windrower Breaks Lumps & Levels Ground



The SRW-800 Pivoting Rock Windrower is designed to windrow small to medium rocks with ease, forming them into neat uniform rows ready for pickup by a Schulte Rock Picker. Roots, stumps, chips and other debris from land clearing operations can also be windrowed. As an added bonus, the windrower has roto-tilling action breaking up lumps and leveling the ground.

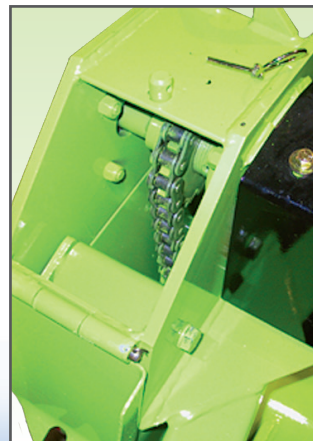
Power is supplied to the windrower drum via a heavy duty PTO driveline which includes a slip clutch and shear bolt arrangement for protection against excessive shock loads. The final drive chain is totally enclosed for longer service life. The windrower drum is constructed of 8 5/8" (219mm) heavy wall pipe, hard surfaced 5/8" (15.9 mm) thick teeth welded directly to the drum.

Narrow, 8.5' transport width.

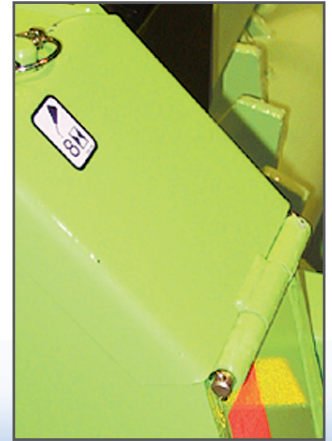
The SRW-800 Pivoting Rock Windrower employs a side delivery frame allowing the operator to better control the size of windrows, regardless of rock conditions. The SRW800 is the perfect tool for contractors, landscape companies and farmers.



Heavy duty PTO driveline



Fully enclosed final drive chain



SMR-800 Windrower

A Perfect Tool for Any of Your Landscaping and Maintenance Needs

The rototilling action of the SMR-800's 8' drum breaks lumps, roots and other debris while reclaiming rocks by forming them in uniform rows. Great for land levelling, surface prep, soil conditioning, seed bed creation, driveway and walking path reclamation.

The 4" replaceable teeth give you greater ground penetration and are made of wear resistant 450 BHN heat treated steel.

The SMR-800 Multi-Rake is chain driven to keep the hydraulic motor out of harm's way. The #80 drive chain and bidirectional idler are located in a sealed chain case and run in an oil bath.

Option for standard rotating mount or floating mount. Also the drum can pivot up to 20° left or right, manually or with optional hydraulics.

Solid mounted 23" forklift grade tires for increased maneuvering and rugged durability.

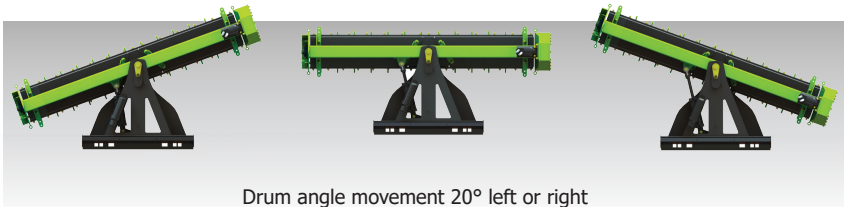
Hydraulic motor options are available to suit skid steer hydraulic flow.



Chain case with tensioner and heavy #80 chain which is run in an oil bath and accessible with an easy access cover plate.



Adjustable, reversible side plates can be mounted on front or back of the unit



Drum angle movement 20° left or right



4" Replaceable teeth
450 BHN steel



Before Multi Rake use



After Multi Rake use



SMR-600 Windrower

The Perfect Tool for Your Skid Steer Landscaping



All of the features of the SMR-800 but in a compact package. The rototilling action of the SMR-600's 6' drum breaks lumps, roots and other debris while reclaiming rocks by forming them in uniform rows. Great for land levelling, surface prep, soil conditioning, seed bed creation, driveway and walking path reclamation.

The 4" replaceable teeth give you greater ground penetration and are made of wear resistant 450 BHN heat treated steel.

Option for standard rotating mount or floating mount. Also the drum can pivot up to 20° left or right, manually or with optional hydraulics.

The SMR-600 Multi-Rake features solid mounted, 16.5/6.5 x 8, air filled tires for increased maneuvering and rugged durability.

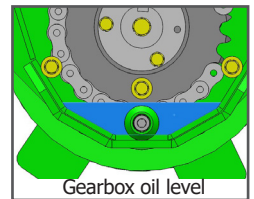
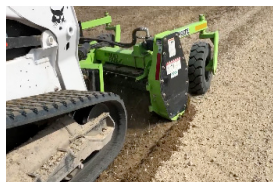
Hydraulic motor options are available to suit skid steer hydraulic flow.

The SMR-600 is chain driven to keep the hydraulic motor out of harm's way.

The #80 drive chain is located in a sealed chain case and run in an oil bath.



Great for land use soil preparation



4" Replaceable teeth
450 BHN steel



Adjustable, reversible
side plates



Chain case with tensioner
and heavy #80 chain with
easy access opening plate.



Schulte Rock Pickers

Match your Schulte Windrower with a Schulte Conveyor Type or Reel Type Rock Picker



2500 Giant

5000 Titan



RS-320



Specifications

SPECIFICATIONS

Weight
Tractor Horsepower
Drum Width
Maximum Ground Speed
Recommended Ground Speed
Drum Speed
Tires
Transport Width
Transport Length
Hydraulic Flow Option
Hitch Type

SRW-1400/H

3500lb (1588kg)
40-150HP (30-112KW)
14' (4270mm)
5mph (8 kph)
2mph (3kph)
117rpm @540rpm input
Truck tires 8 ply ST205/90D
93" (2.36m)
235" (5.97m)
15 GPM (57 LPM) Minimum
Pull

SRW-1000

2660lb (1206kg)
40-150HP (30-112KW)
10' (3050mm)
5mph (8 kph)
2mph (3kph)
117rpm @540rpm input
22" forklift tires (56cm)
134" (3.4m)
179" (4.55m)
-
Pull

SRW-800

1350lb (613kg)
35-100HP (30-60KW)
88 5/8" (2215mm)
5mph (8 kph)
2mph (3kph)
102rpm @540rpm input
16.5/6.5 x 8
102" (2.59m)
67" (1.7m)
-
3 pt (Cat II)

SMR-800

1900lb (862kg)
-
89" (2.26m)
-
-
220-250rpm
23" forklift (58cm)
102" (2.59m)
Standard: 79", Floating: 83"
18-35 GPM (68-132 LPM)
Skid Steer Quick Attach

OPTIONS - SRW-1400/SRW-14-H

- High speed sprocket for gravel reclamation configuration
- CE shielding for Europe
- Hydraulic Drive

OPTIONS - SRW-1000

- High speed sprocket for gravel reclamation configuration

OPTIONS - SRW-800

- High speed sprocket for optional gravel reclamation configuration
- CE shielding for Europe

OPTIONS - SMR-800

- Various skid steer interface harnesses
- Hydraulic or manual angle adjustment
- Hydraulic motor options are available to suit skid steer hydraulic flow

OPTIONS - SMR-600

- Various skid steer interface harnesses
- Hydraulic or manual angle adjustment
- Hydraulic motor options are available to suit skid steer hydraulic flow



Excellent for land preparation and debris removal



Rototilling action



Legendary Schulte quality

SCHULTE

Schulte Industries Ltd.

PO Box 70, Englefeld, SK Canada S0K 1N0

Ph (306) 287-3715 Fx (306) 287-3355

Email info@schulte.ca Web www.schulte.ca



ISO 9001

Sold By:

Printed in Canada

Prepared by NELSON GRAPHIC DESIGN

211309

Schulte is a registered trademark of Alamo Group Inc.

Schulte Industries Ltd. reserves the right to change the design and specifications of its products without notice. Illustrations may include optional equipment and accessories, and may not include all standard equipment.

