

OPERATIONS & PARTS MANUAL

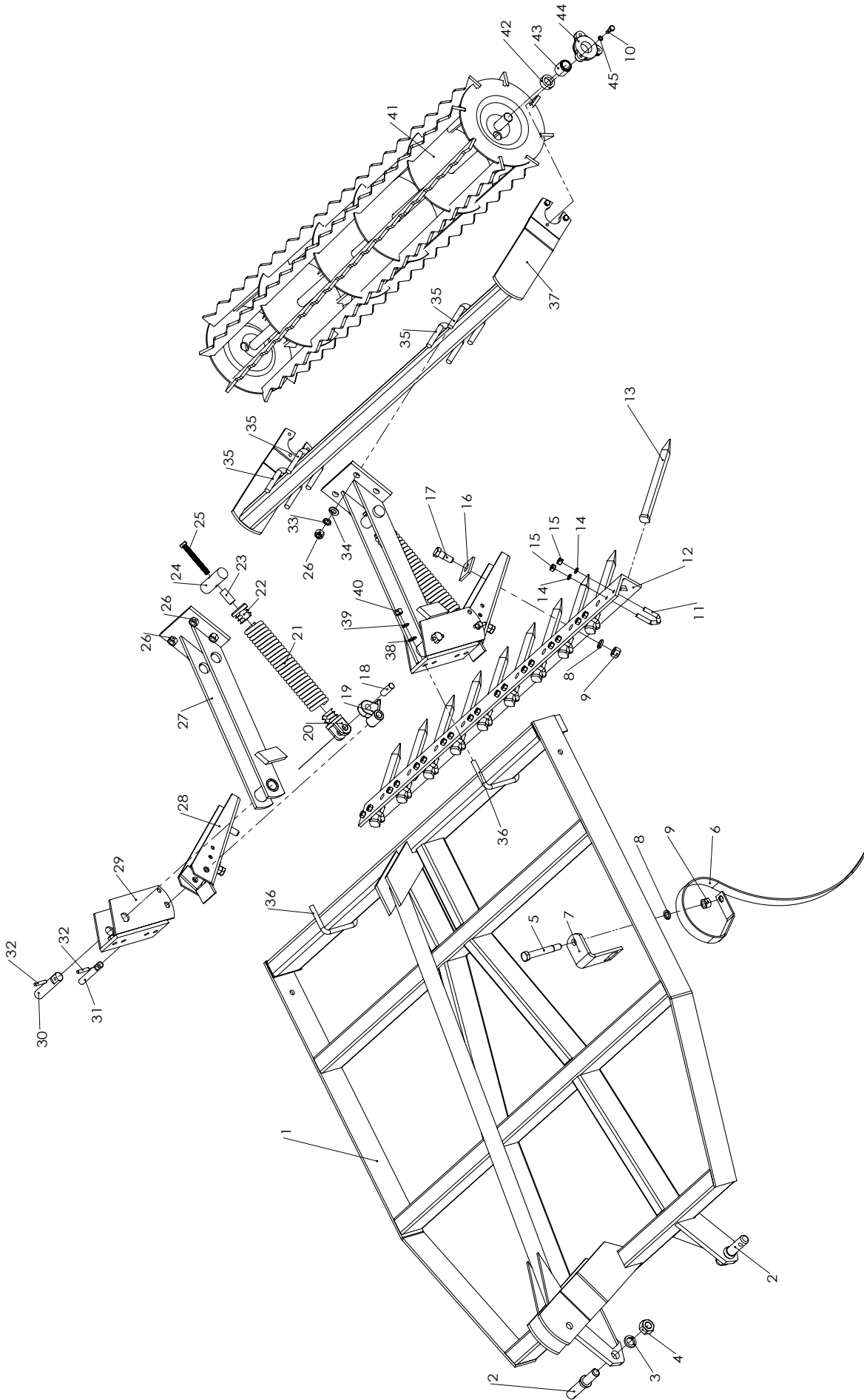
FOR MODELS:

- BE-FCH04R
- BE-FCH05R
- BE-FCH06R

PURCHASE DATE	MODEL NO.	SERIAL NUMBER
DEALER		

REF.	PART NUMBER	DESCRIPTION	QTY
1	310001	Main Frame	1
2	310002	Cat 1 Hitch Pin	2
3	310003	Ø22mm Lock Washer	2
4	310004	M22 Hex Nut	2
5	310005	M16x120mm Bolt	9
6	310006	S-Tine	9
7	310007	S-Tine Mounting Plate	9
8	310008	Ø16mm Flat Washer	11
9	310009	M16 Hex Lock Nut	11
10	310010	5/16" x 7/8" Bolt	6
11	310011	U-Bolt 1	10
12	310012	Spike Mounting Plate	1
13	310013	Spike	10
14	310014	Ø10mm Lock Washer	20
15	310015	M10 Hex Lock Nut	20
16	310016	Square Washer	2
17	310017	M16x45mm Bolt	2
18	310018	Ø16x47mm pin	2
19	310019	Spring Coupler	2
20	310020	Lower Spring Mounting Bracket	2
21	310021	Spring	2
22	310022	Upper Spring Mounting Bracket	2
23	310023	Bushing	2

REF.	PART NUMBER	DESCRIPTION	QTY
24	310024	Roll Pin	2
25	310025	M12x100mm Bolt	2
26	310026	5/8" Hex Nut	8
27	310027	Connecting Arm	2
28	310028	Spike Mounting Arm	2
29	310029	Link Bracket	2
30	310030	Ø25x115mm Pin	2
31	310031	Ø16 x 21mm Pin	2
32	310032	Ø8mm Roll Pin	4
33	310033	5/8" Lock Washer	8
34	310034	5/8" Flat Washer	8
35	310035	U-Bolt 2	4
36	310036	U-Bolt 3	2
37	310037	Roller Mounting Frame	1
38	310038	1/2" Flat Washer	4
39	310039	1/2" Lock Washer	4
40	310040	1/2" Hex Nut	8
41	310041	Roller	1
42	310042	Bushing	2
43	310043	Bearing HC205-16L3	2
44	310044	Bearing Holder	2
45	310045	Ø8mm Lock Washer	6





BRABEREQ.COM
WGSALLES@BRABEREQ.COM

PHONE: 604-850-7770
FAX: 604-850-7774
TOLL FREE PHONE: 1-877-588-3311
TOLL FREE FAX: 1-800-665-7334