

Zetor

PROXIMA PROXIMA POWER



PERFORMANCE
ENDURANCE
TOTAL COST OF OWNERSHIP

Tractor is Zetor since 1946.

PROXIMA

70

85

100

PROXIMA POWER

90

100

110

120

ZETOR HAS BEEN DESIGNING AND MANUFACTURING RUGGED AND DURABLE TRACTORS FOR PROFESSIONALS IN MORE THAN 100 COUNTRIES, FOR OVER 65 YEARS. THE PROXIMA AND PROXIMA POWER SERIES ARE THE LATEST PRODUCTS OF EUROPEAN QUALITY ENGINEERING AND UNCOMPROMISED PRODUCTION STANDARDS.

THEY OFFER AN OVERALL HEAVY DESIGN, HIGH LEVEL OF EQUIPMENT AND REFINED QUALITY OF ITS NAME BRAND COMPONENTS AT THE PRICE OF MUCH LESSER COMPETITORS.

Zetor

HEAVY DUTY
TRACTORS FOR
PROFESSIONALS



- 1 The well-equipped cab offers a flat, uncluttered floor and wide doors, for comfortable access from both sides. The cab has tinted windows. A fast responding heater and efficient air conditioning are standard. The wide, flat operator's platform both for tractors with and without cab is mounted on rubber supports to reduce shock and vibration, for added driver comfort.
- 2 The all-new open-center hydraulic system is simple in design, operation and servicing, yet powerful in features. The Zetor three-point hitch offers some of the highest standard capacities of any tractor of comparable horsepower.
The hydraulic pump delivers 14 or 17 gallons per minute just for the three-point hitch and the loader.
- 3 Fully synchronized transmission of the Proxima series with synchronized shuttle has 12 speeds forward and 12 reverse. The Proxima Power series is equipped with 24/24 power shuttle transmission with wet clutch and three-stage power shift.
- 4 Well-balanced weight distribution over front and rear axle provides superior traction and reduced compaction.
- 5 The updated, rugged, easy-to-start engines provide outstanding fuel economy and very high torque.
- 6 The new hood is fully screened, to protect radiator from plugging.
- 7 Full hydrostatic steering has its own hydraulic pump, fully independent from the main hydraulic pump.

More than a million Zetor Range 1 tractors, one of the most dependable tractor designs, are on the job in just about every part of the world. The latest generation of Zetor Range 1 tractors are the Proxima and Proxima Power series.

The new models represent the latest refinement of the Zetor brand. Every model combines the heavy, tough, reliable and easy-to-service Zetor chassis with updated, more powerful, extremely fuel efficient, cleaner burning, state of the art engines, updated or new transmissions, new heavier front and rear axles, all-new hood, updated controls, all-new powerful hydraulic systems, more efficient brakes and a wide range of other improvements. New models also have simplified maintenance and substantially extended service intervals.

What has not change is the basic Zetor Range 1 concept: Rugged piece of machinery for professional use for the cost of much lighter and less substantial competitors.

POWER AND PERFORMANCE

PROXIMA

70

70 HP

with and without cab, 2WD and 4WD

85

85 HP

with and without cab, 2WD and 4WD

100

100 HP

with and without cab, 4WD only

The **Proxima** models are all-mechanical tractors, thoroughly engineered using up-to-date technology in every aspect, while emphasizing the highest possible reliability and very easy and inexpensive servicing during their entire life.

PROXIMA POWER

90

93 HP

with and without cab, 4WD

100

100 HP

with and without cab, 4WD

110

107 HP

with and without cab, 4WD

120

120 HP

with and without cab, 4WD

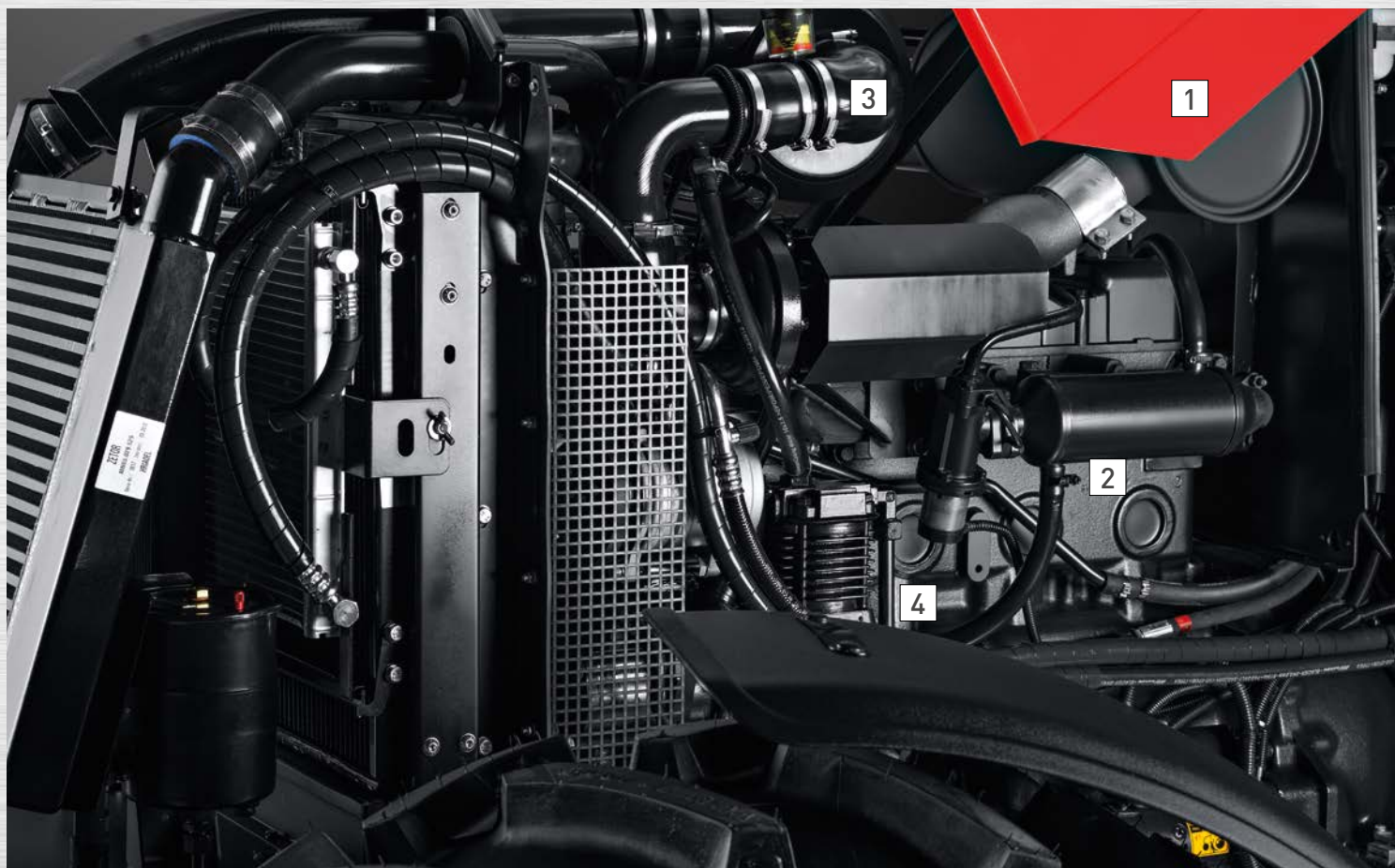
The **Proxima Power** models maintain the mechanical engine design, in addition to having hydraulically controlled power shuttle, power shift and PTO clutch to enhance the features and comfort.

Zetor ENGINE

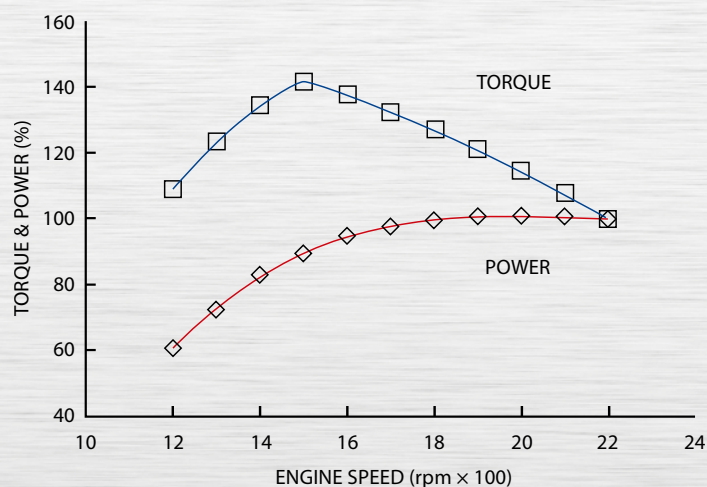
SINCE 1946, ZETOR TRACTORS HAVE RELIED ON ZETOR'S OWN ENGINES. THE PROXIMA AND PROXIMA POWER SERIES TRACTORS ARE EQUIPPED WITH THE LATEST GENERATION OF ZETOR ENGINES. NEW ENGINES BRING MORE POWER, HIGH TORQUE, ALONG WITH SMOOTH RUN AND EXCELLENT COLD WEATHER STARTING.

THIS FAMILY OF ZETOR ENGINES HAS BECOME LEGENDARY DURING THEIR 20 YEARS OF PRODUCTION FOR THEIR RELIABILITY, EXTREMELY LONG LIFE AND EASY SERVICING.

THE NEW ENGINES ARE A PRODUCT OF QUALITY ENGINEERING AND DECADES OF ZETOR ENGINE DESIGN EXPERTISE. ZETOR ENGINES MEET EPA EMISSION REGULATIONS WITHOUT AFFECTING THEIR HIGHLY REGARDED FUEL ECONOMY. AT THE SAME TIME, OUR ENGINES MAINTAIN PROVEN ALL-MECHANICAL CONTROLS, SO FUTURE SERVICING IS GREATLY MINIMIZED AND SIMPLIFIED.



- 1** It does not get any easier: The new hood provides exceptionally good access for all service jobs.
- 2** Heavy engine blocks ensure minimal sleeve distortion and long service life.
- 3** A dry air cleaner with main and safety elements is easy to service. Both elements are extra high capacity for extended service life.
- 4** The engine fuel filter, oil filter and oil fill plug and dipstick are centralized at one service-friendly location.



The new Zetor engines have very high torque backup (over 40%), to reduce the need for down shifting. The engine horsepower stays constant through a broad range of engine speed.

- 1 An air compressor is standard on all cab models, optional on open station tractors. You can use it to inflate tires, or to run various equipment. Cab models use the same air system to control the rear differential lock and the mechanical front wheel drive clutch. An air system in these applications is simple and maintenance-free.
- 2 All Zetor tractors are equipped with a large all-metal radiator. New radiators are very efficient, and require less frequent cleaning. On tractors with air conditioning, the condenser slides to the side, to make cleaning easy.
- 3 Reliable Zetor in-line injection pump is superior to any rotary pump design and is designed for life-time service-free operation. The in-line injection pump, together with high capacity battery (950 CCA) and efficient glow plug in each cylinder provide outstanding cold weather start. In-line Zetor pumps also tolerate fuel of various quality much better than other designs – great advantage for everyday farming environment. For almost 30 years, Zetor engines can be used with bio-diesel.
- 4 Most Zetor tractors are used with front loaders. Proxima series uses dry 12" heavy-duty engine clutch with industrial-grade cerametallic lining, especially suitable for loader work. High mass fly-wheel dissipates heat efficiently. Engine clutch does not require any adjustment. Heavy-duty throwout bearings are designed for the life of the engine. The hydraulic clutch controls were redesigned for the new series. Special geometry of the clutch pedal considerably reduces pedal effort. Low pedal force effort allows smooth and soft clutch engagement. Proxima Power uses multi-plate wet clutch.
- 5 Zetor engines are equipped with a glow plug in each cylinder, automatically controlled by the key switch. After a few seconds of preheating, the engine will start immediately, even on very cold winter days, without the help of a block heater. This system is far superior to other starting aids and is totally maintenance-free. For extremely cold climates, a block heater is available as optional equipment.
- 6 All Zetor engines have wet sleeves for easy and inexpensive overhauls. No special tools are required for engine repairs. Zetor engines are designed for the long haul. Compare with most competitors.



Zetor engines use precisely balanced components to ensure a smooth, vibration-free run. In addition, two precision-machined balancer shafts running in needle bearings, further reduce engine vibrations at any engine speed.



The side-mounted muffler is standard on all cab models. The operator's view is not restricted. Open station tractors use horizontal exhaust.



Larger fuel tanks with ground level fueling.

Zetor TRANSMISSION

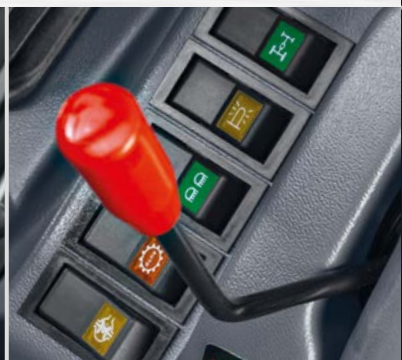


THE PROXIMA SERIES TRACTORS COME STANDARD WITH SMOOTH SHIFTING FULLY SYNCHRONIZED MECHANICAL SHUTTLE TRANSMISSION WITH 12 SPEEDS FORWARD AND 12 REVERSE.

THE PROXIMA POWER SERIES FEATURES 24/24 POWER SHUTTLE TRANSMISSION WITH THREE-SPEED POWER SHIFT AND INCREASED TRAVEL SPEED (24 MPH TOP SPEED), TO SHORTEN TRAVEL TIMES BETWEEN WORK SITES. INCREASED TRAVEL SPEED CAN BE ORDERED AS OPTION ON PROXIMA SERIES.



Push buttons integrated into the main gear shift knob on Proxima Power series tractors engage the powershift. An additional red button makes it possible to smoothly control the engine clutch while shifting gears (instead of using clutch pedal).



A switch on the Proxima Power dashboard turns on the auto shift feature – the power shift will automatically upshift and downshift based on engine load. The shifting points are easily programmable by the operator, a feature not found on most competitors.



The power shuttle on the Proxima Power series allows for clutchless reversing using a switch next to the steering wheel. Zetor power shuttle is a proven, refined, smooth and service free unit.

All gear shift levers are at optimized locations on the sides, leaving the floor clear and free of obstacles. A mechanical synchronized shuttle reverser on the Proxima series is designed for loader work. Reverse speeds are slightly faster than forward speeds, for shorter cycles and better productivity. The smooth shifting shuttle shift lever is conveniently located on the left side of the steering wheel, leaving your right hand free to operate loader controls

The differential lock is on cab models engaged by an electro-pneumatic system and a switch on the dashboard. The differential lock is automatically disengaged by touching the brake pedals. Zetor's unique pneumatic system is very simple and it is mounted externally - that means it is also very easy to service. Open station tractors use a mechanical differential lock control by a pedal.



Inside the transmission, the same rugged, heavy, high-grade components and materials are used which made Zetor tractors famous for reliability and long life. Zetor transmissions are built to last. Simple design means easy servicing without expensive special tools, greatly reducing maintenance costs over long periods of time.

All 4WD models come with a new, heavy duty, center drive shaft, mechanical front wheel drive. Front wheel drive can be engaged on-the-go by an electric switch. Front axle load capacity has been further increased and is more than adequate for even the most demanding loader work.

The drive shaft is fully shielded. The front drive axle with a very tight 55-degree turning angle provides turning radius comparable to 2WD tractors - a great advantage for loader work. Rugged and practical front fenders are standard on most models and keep operator's area clean.

New rear axle has increased load capacity for heavy tillage implements.

Zetors are equipped from the factory with Mitas tires known for decades for their toughness and extreme durability – customers frequently report their life twice as long as life of some competitive brand tires



Zetor **POWER TAKE OFF**



INDEPENDENT PTO ON PROXIMA SERIES TRACTORS IS OPERATED BY A SEPARATE MECHANICAL PTO CLUTCH, FULLY INDEPENDENT FROM THE ENGINE CLUTCH. THIS SIMPLE SYSTEM ENGAGES SMOOTHLY AND PRECISELY AND THE OPERATOR IS ALWAYS IN FULL CONTROL OF PTO ENGAGEMENT.

STANDARD ON ALL PROXIMA TRACTORS IS TWO-SPEED INDEPENDENT PTO (540/750 RPM), WHICH ALLOWS YOU TO RUN MOST OF THE PTO DRIVEN IMPLEMENTS AT MUCH REDUCED ENGINE SPEED (APPROX. 1600 RPM), SAVING APPROX. 20% OF FUEL AND REDUCING ENGINE NOISE.

THE 540/1000 RPM VERSION IS ALSO AVAILABLE.

All Zetor tractors have standard ground speed PTO, which makes it possible to reverse the direction of PTO rotation (for example, to reverse the rotation of a post hole digger), a unique Zetor feature. The PTO can be run in reverse even while tractor is not moving.

Ground speed PTO also makes it possible to run low-horsepower implements, such as water pumps or generators, extremely efficiently. For example, you can run your PTO at 540 rpm while engine is at low idle.

The Proxima Power series features 540/1000 rpm PTO with electro-hydraulic PTO controls and offers three different PTO start up modes to match best the implement demands, so the engagement is quick, but always smooth and gradual.

Also available on all models: Front 3-point hitch with 3000 lb capacity and front PTO (1000 rpm). Front PTO and front 3-point hitch can be mounted separately, or combined. They can also be added later as dealer-installed accessory. The front 3-point hitch is compatible with Zetor front loaders.



Open station tractors also use a wide, comfortable platform, supported on special rubber blocks. The platform and the seat are five inches lower than on cab models. The roll bar can be folded in seconds.

The low profile version with industrial tires has been designed for heavy-duty utility/industrial applications in places with low ceiling height. It is available in horsepower versions up to 100 HP. The height with folded roll bar is 79 inches.

BRAKES



WET DISC BRAKES ARE HIGHLY EFFICIENT, YET ENGAGE VERY SMOOTHLY. THEY WERE DESIGNED FOR PRACTICALLY MAINTENANCEFREE LIFE. DUE TO THE LARGE NUMBER OF PLATES (EIGHT TOTAL) AND THEIR SUPERB FRICTION MATERIAL, THE BRAKE WEAR IS MINIMAL. BRAKES ARE COOLED AND LUBRICATED BY A CONTINUOUS FLOW OF THE TRANSMISSION & HYDRAULIC OIL. TRACTORS WITH INCREASED TRAVEL SPEED ARE ALSO EQUIPPED WITH WET DISC BRAKES INTEGRATED INTO THE FRONT AXLE FINAL DRIVES.

ALL BRAKE CONTROLS SUCH AS CYLINDERS ARE NEWLY DESIGNED AND EXTERNALLY MOUNTED.





Zetor **CAB**

COMFORTABLE CABS AND PLATFORMS HAVE ALWAYS BEEN A ZETOR TRADITION. THE PROXIMA SERIES COMES WITH AN UPDATED, STATE-OF-THE-ART DESIGN, MORE REFINED THAN EVER. THE SPACIOUS CAB HAS A LEVEL, UNCLUTTERED FLOOR. LARGE WINDOW AREA PROVIDES EXCELLENT VISIBILITY IN ALL DIRECTIONS. FULLY UPHOLSTERED FENDERS AND THICK FLOOR INSULATION PACKAGE KEEP HEAT AND NOISE OUT.

- 1** Full instrumentation is weather-sealed and includes tachometer with hour meter, water temperature gauge, fuel gauge, air pressure gauge and a number of warning and indicator lamps for various functions. The Proxima Power uses a digital display with additional functions.

- 2** Wide and comfortable seat is fitted in all cab tractors. The seat is widely adjustable forward- backwards, for operator's weight and in height. Double-acting hydraulic shock absorber adds to operator's comfort. An air-ride seat is optional.
- 3** The standard tool box.



Power socket, lighter,
cup holder and storage
compartment



The tilt and telescoping steering wheel is standard and is adjustable within a wide range, for better seating position and easier entry and exit.



FRONT AND REAR WIPERS AND WINDSHIELD WASHER ARE STANDARD. ALL WINDOWS ARE CONTOURED FOR ADDED STRENGTH AND REDUCED NOISE AND TINTED TO REDUCE HEAT AND GLARE. SIDE WINDOWS CAN BE LATCHED IN OPEN POSITION. THE WINDSHIELD HAS A ROLLER SUN BLIND. CAB MODELS HAVE SIX OR EIGHT HALOGEN FRONT LIGHTS AND THREE HALOGEN REAR WORK LIGHTS. OPEN STATION TRACTORS HAVE FOUR FRONT HALOGEN LIGHTS AND ONE REAR HALOGEN WORK LIGHT. ON THE PROXIMA POWER SERIES, MIRRORS AND REAR WINDOW ARE HEATED. WIDE, ANGLED, SLIP-PROOF FOOTSTEPS ON BOTH SIDES PROVIDE EASY ACCESS TO THE TRACTOR SEAT FROM EITHER SIDE.



The high capacity, fast responding heater delivers warm air only a few minutes after a cold engine start. Efficient air conditioning is standard. Standard large capacity fiber filters can be replaced by charcoal filter inserts.

Zetor



Zetor **THREE-POINT HITCH AND HYDRAULIC SYSTEM**



Telescopic lower link ends make implement hook-up easy.



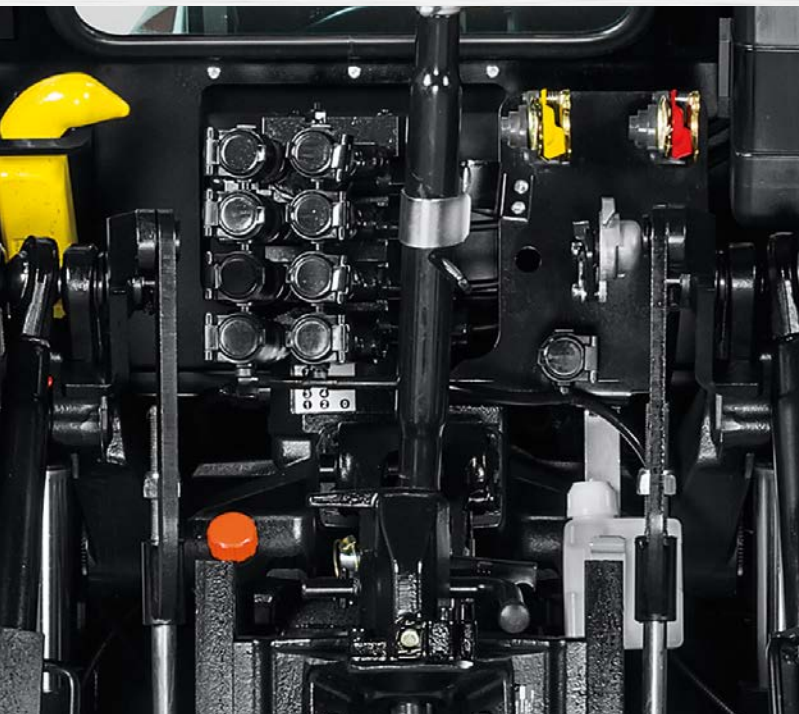
THE ENTIRE HYDRAULIC SYSTEM IS ALL-NEW FOR 2012, MAINTAINING AN ALL-MECHANICAL DESIGN, BUT INCORPORATING THE MOST ADVANCED FEATURES AVAILABLE.

- 1 Unlike with most competitors, Zetors wide and long rear fenders are standard and help keep your equipment clean.
- 2 The transmission oil fill is conveniently located.
- 3 Zetor's heavy-duty 3-point hitch has very high lifting capacity (9,300 lbs).

Alternatively, lower links with quick-release hooks are available. Implements can be connected and disconnected without leaving the seat.

The all-new hydraulic controls offer finer control of the three-point hitch. Accurate and sensitive Draft and Mixed controls for plowing and other tillage operations are another traditional Zetor advantage. Mixed control is a unique feature combining even plowing depth with high engine power utilization.

One, two or three sets of remote outlets are available. A direct return (zero pressure) coupler is also standard (required for hydraulic motors). All sets use premium quality, feature-rich control valves with cable controls. Some spools are equipped with detented pressure positions with automatic release. All spools have float. Two ports are equipped with special check valves, which completely avoid any drift (implement drop) caused by oil otherwise leaking over long periods of time from cylinders back into the tractor (for example, raised mower wings).



External three-point hitch controls are standard on all cab models, making implement hookup easy.

The live hydraulic pump with full-flow fine filter system has 14 gpm capacity. A 17 gpm pump is optional on Proxima series. Unlike most competitors, all Zetors have a separate 6 gpm pump for steering, so all the oil supplied by the main hydraulic pump is constantly available for the 3-point hitch and the remotes (loader works at full speed all the time). The total hydraulic flow is 20 or 23 gpm. All pumps are externally mounted for easy access.

Zetor SYSTEM

120 K and 120 SLi Front End Loader



THE ALL-NEW ZETOR SYSTEM 120K AND 120SLI LOADERS HAVE BEEN DESIGNED SPECIFICALLY FOR ZETOR PROXIMA AND PROXIMA POWER SERIES TRACTORS. THEREFORE, THERE ARE NO COMPROMISES IN THE ZETOR SYSTEM LOADER DESIGN. EVERY ZETOR SYSTEM LOADER IS A PERFECT MATCH WITH ZETOR TRACTOR, PROVIDING EXCEPTIONAL STRENGTH, HIGH LIFTING SPEED, SOLID PERFORMANCE AND LONG TERM RELIABILITY IN A COMPACT FORMAT, ALL THAT IN THE TRADITIONAL VERY HIGH LEVEL OF CRAFTSMANSHIP. ZETOR SYSTEM LOADERS INCORPORATE MANY SPECIAL FEATURES NOT FOUND ON ANY OTHER LOADER.

The base model 120K is an elegant, rugged low profile loader suitable for all Proxima and Proxima Power models. Compared to the previous generation, it has reinforced boom, greater lifting height and faster bucket dump and rollback.

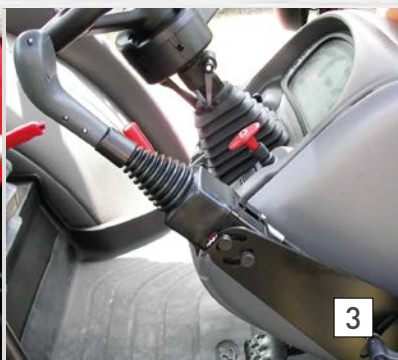
The 120SLi is also a very rugged low profile loader, but it is equipped with mechanical self-leveling. It is also fitted with additional linkage between the loader and the bucket, to substantially increase the rollback and dump angle and speed.



1



2



3



4

1 Loader booms are made of high strength steel (yield strength 73,000 psi) and have a large-size torque tube welded to the boom using two additional heavy back plates on each side (model 120SLi shown). This makes the loader very resistant to twisting even in the most demanding applications. On model 120SLi, the optional 3rd and 4th functions and pressure

accumulator ("Soft-Ride") are also integrated inside the torque tube.

2 All grease fittings are safely and conveniently accessible from the sides with a common grease gun while the loader is lowered to ground.

3 The new location for the heavy-duty all-metal joystick was carefully

selected to provide the best operator's comfort. The joystick position is adjustable to suit operator's needs. On model 120SLi, joystick can be quickly tilted forward to allow unrestricted access to the seat from the right side. The joystick can accommodate up to three switches to control additional functions. Zetor loaders use a high precision hydraulic valve with soft

return springs, which allows for more precise joystick control (joystick moves very easily).

4 Custom designed for ZETOR Proxima and Proxima Power series tractors, ZETOR system loaders impose minimal restriction to ZETOR's very tight 55 degree turning angle (even on 4WD models with front fenders).

Loader model 120SLi is equipped with true mechanical self-leveling. The attachments stay at the same angle throughout the entire lifting range of the loader. This is especially handy when using pallet forks, but it is practical with any other attachment. Operators who have tried a good self-leveling loader will never go back to a loader without this feature.

The mechanical self-leveling is superior to any hydraulic self-leveling system. Since it is a pure mechanical device, it is very precise under any working conditions, regardless of the load, oil temperature or any other factor. Unlike many hydraulic self-leveling systems, the Zetor true mechanical system works both during lifting and during lowering of the loader.

Zetor self-leveling system is completely service-free.



Drive in...



Release levers ...

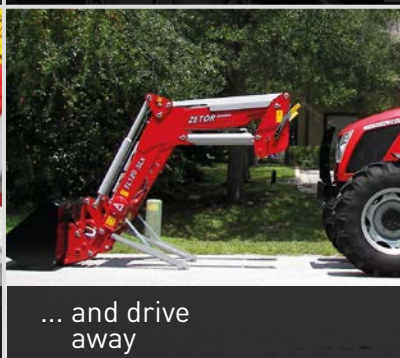


Loader hydraulics are designed specifically for ZETOR tractors and do not occupy any of tractor quick couplers.

Optional pressure accumulator makes the ride more comfortable. It can be turned on and off as needed either by a mechanical valve or by an electric valve controlled by a push button built into the joystick.



...roll the bucket back and bucket snaps in.



... and drive away



Three-layer bushings with grease fittings are used at all moving points, providing long life and easy replacement.



Buckets and other attachments have the proven quick-attach Euro tool carrier. To attach the bucket, there is no need to leave the seat. The latch position indicator is clearly visible from the seat.

Quick mount and unmount—within seconds and with no tools. Loader stands are adjustable in height for easy and safe parking on uneven ground. When the loader is detached, the mounting frame leaves good access for tractor maintenance, virtually as if there was no loader on the tractor at all. The hydraulic valve stays on the tractor for multi-purpose uses.

The available third and fourth function kits can easily be added to any Zetor loader. Each kit comes with a pair of quick couplers mounted directly on the boom. Attachments with their own cylinder, such as grapple forks can be controlled by push buttons in the joystick.

SPECIFICATION PROXIMA

MODEL	Units	70	85	100
ENGINE				
Type		4-cylinder, 254 cu.in turbocharged diesel, water cooled, wet sleeves, 4 valves per cylinder		
Maximum engine horsepower – gross/NET/PTO	HP	70/67/63	85/81/76	100/96/89
Rated Speed	rpm	2,200		
Air compressor capacity	psi	6CFM @ 85		
Alternator capacity – cab models	Volt/Amp	12/95		
Alternator capacity – open station models	Volt/Amp	12/55		
Battery capacity	CCA	950		
Fuel tank capacity – cab models	gal	34	35	40
Fuel tank capacity – open station models	gal	22		
Oil change & service intervals	hours	500		
CLUTCH				
Type		Dual-purpose, 12", cerametallic lining		
Clutch control		Hydraulic, self-adjusting		
TRANSMISSION				
Type		Fully synchronized with mechanical shuttle		
Forward/reverse gears		12/12		
P.T.O. SHAFT				
Type	rpm	Independent, 540/750		
Ground Speed P.T.O.		Standard		
BRAKES				
Type		Wet disc brake, models with high speed transmission also have wet disc brakes in front axle		
Service brake control		Hydraulic		
STEERING				
Type		Hydrostatic		
HYDRAULIC SYSTEM				
Type		Open center		
Flow @ pressure at remotes		14 gpm @ 2,900 psi (17 gpm optional)		
Total hydraulic flow	gpm	20 (23 optional)		
Three-point hitch		Category I - II		
Function		Position, draft, mixed		
Lifting force @ end of lower links	lbs.	9,300		
Remote outlets – cab models	sets	1 (3 optional)	3	
Remote outlets – open station models	sets	1 (3 optional)		
MAIN DIMENSIONS				
Wheelbase 2WD/4WD	in.	91/89		NA/89
Length	in.	152		
Minimum width (for rear wheel track 56 in)	in.	73		
Height with ROPS raised/folded	in.	103/83 (16.9-30) 99/79 (19.5L-24)	105/85 (16.9-34) 99/79 (19.5L-24)	
Height with cab	in.	103 (11.2-24 & 16.9-30) 100 (19.5L-24)	105 (12.4-24 & 16.9-34) 100 (12.5-18 & 19.5L-24)	
Ground clearance	in.	22 (2WD) 16 (4WD) (11.2-24 & 16.9-30)	22 (2WD) 17 (4WD) (12.4-24 & 16.9-34))	
Wheel track: 2WD	in.	56 – 75 (front); 56-71 (rear)		
Wheel track: 4WD	in.	59 – 77 (front); 56 – 71 (rear)		
Turning radius 2WD/4WD	ft.	11/12		NA/12
Weight with cab, w/o weights 2WD	lbs.	7,390	7,540	
Weight with cab, w/o weights 4WD (Deduct 500 lbs w/o cab)	lbs.	8,190	8,340	8,410
Tires front: 2WD		9.00-16		N/A
Tires front: 4WD		11.2-24; 12.5/80-18 industrial tires	11.2-24; 12.4-24; 13.6R-24; 12.5/80-18 industrial tires	
Tires rear		16.9-30; 19.5L-24 industrial tires	16.9-30; 16.9-34; 18.4R-34; 19.5L-24 industrial tires	

STANDARD EQUIPMENT

OPEN STATION MODELS

• Horizontal exhaust • Differential lock with mechanical engagement • Limited slip front differential (4WD models) • Ground speed PTO • Telescopic sway bars • Telescopic or hook-style lower links • One set of remote hydraulic outlets • Deluxe seat with three-way adjustment and arm rests • Folding ROPS • Four halogen head lights and one halogen rear work light • Tool box • Tilt/telescoping steering wheel (except Proxima 70) • Front fenders, reinforced rubber (except Proxima 70)

*Contact your Zetor dealer for the latest standard and optional equipment.

CAB MODELS

• Air compressor • Differential lock and front wheel drive with electric engagement • Limited slip front differential (4WD models) • Two-speed PTO 540/750 • Ground speed PTO • Telescopic sway bars • Telescopic or hook-style lower links • One set of remote hydraulic outlets (model Proxima 70) • Three sets of remote hydraulic outlets (all other models) • External three-point hitch controls • Deluxe seat with three-way adjustment and arm rests • Tinted windows • Front and rear wipers • Windshield washer • Air conditioning • Six front and three rear halogen lights • Tool box • Tilt/telescoping steering wheel • CD radio with two speakers Front fenders (except model Proxima 70)

OPTIONS

• Front and rear weights • Block heater • Creeper transmission (cannot be combined with shuttle transmission) • Front PTO and front 3point hitch • 2nd & 3rd set of remote hydraulic outlets (on models not so equipped as standard equipment) • Front fenders for model 7040 • Air ride seat • Instructional seat (cab models only)

FRONT END LOADERS

ZETOR SYSTEM 120K

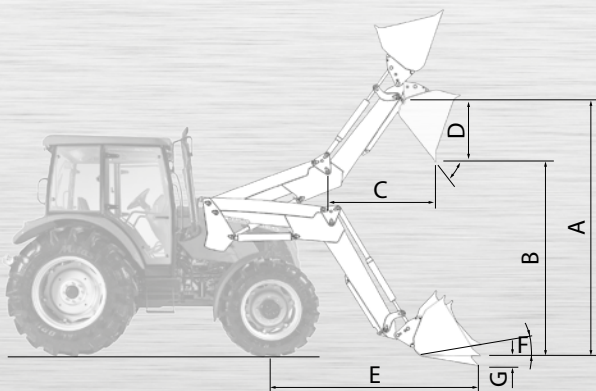
High capacity, heavy-duty, quick-attach low profile front loader. Recommended for all Proxima models.

ZETOR SYSTEM 120SLI

Advanced high capacity, heavy-duty, quick-attach low profile front loader with self-leveling. Recommended for all Proxima models.

SPECIFICATIONS

	LOADER MODEL	120K	120SLi
	Mechanical self-leveling	NO	YES
A	Maximum Lift Height (in.)	130	139
B	Clearance with Bucket Dumped (in.)	121	100
C	Reach at Maximum Height (in.)	23	28
D	Maximum Dump Angle (deg)	40	70
E	Reach on Ground (in.)	73	92
F	Bucket Rollback Angle (deg)	15	45
G	Digging Depth (in.)	5	6



SPEED CHART OF PROXIMA

AT ENGINE SPEED 2,200 (mph) and rear tires 16.9-34

Add 4% for tires 18.4R-34. Deduct 4% for tires 16.9-30 and 13% for tires 19.5L-24.

HIGH SPEED

gear	FORWARD		REVERSE	
	low	high	low	high
1	0.96	3.81	1.05	4.16
2	1.24	4.90	1.36	5.36
3	1.77	6.98	1.93	7.62
4	2.50	9.86	2.73	10.77
5	3.95	15.60	4.32	17.05
6	5.68	22.43	6.21	24.52

REGULAR SPEED

	FORWARD		REVERSE	
	low	high	low	high
	0.80	3.15	0.87	3.44
	1.03	4.05	1.12	4.42
	1.46	5.76	1.60	6.30
	2.06	8.15	2.26	8.90
	3.27	12.89	3.57	14.09
	4.70	18.54	5.13	20.26

LOADER MODEL		120K	120SLi
Lift Capacity to Full Height (lb.)	- at pivot points (loader w/o bucket)	4,600	3,600
	- 31.5" ahead of pivot (with bucket attached)	2,600	2,400
Breakout Force (lb)	- at pivot points (loader w/o bucket)	5,800	5,000
	- 31.5" ahead of pivot (with bucket attached)	3,600	3,800
Raising Time w/14 gpm pump (sec)		4.5	5
Bucket dump time (sec)		4.5	3.5
Bucket rollback time (sec)		3	3.5
Weight with 73" bucket (lb)		2,150	2,750

Model 120SLi is also available with larger lift cylinders. This increases all lift capacities by 30 %, but slows raising time to 6.5 sec.

Specifications measured for tire size:13.6R-24 (front); 18.4R-34 (rear)
Specifications subject to change without notice and without incurring obligation on behalf of Zetor.

SPECIFICATION PROXIMA POWER

MODEL	Units	90	100	110	120
ENGINE					
Type		4-cylinder, 254 cu.in turbocharged diesel, water cooled, wet sleeves, 4 valves per cylinder			
Maximum engine horsepower – gross/NET/PTO	HP	93/ 89/ 83	100/ 96/ 89	107/101/94	120/114/104
Rated Speed	rpm	2,200			
Air compressor capacity	psi	6CFM @ 85			
Alternator capacity	Volt/Amp	12/95			
Battery capacity	CCA	950			
Fuel tank capacity	gal	48			
Oil change & service intervals	hours	500			
CLUTCH					
Type		Multi-plate wet clutch			
TRANSMISSION					
Type		Fully synchronized with three-stage power shift and power shuttle			
Forward/reverse gears		24/24			
P.T.O. SHAFT					
Type	rpm	Independent, 540/1,000			
P.T.O. clutch controls		Electro-hydraulic			
Ground Speed P.T.O.		Standard			
BRAKES					
Type		Wet disc brakes in front and rear axles			
Service brake control		Hydraulic			
HYDRAULIC SYSTEM					
Type		Open center			
Flow @ pressure at remotes		14 gpm @ 2,900 psi			
Total hydraulic flow	gpm	20			
Three-point hitch		Category I - II			
Function		Position, draft, mixed			
Lifting force @ end of lower links	lbs.	9,300			
Remote outlets	sets	3 sets standard, all with float; one set with detented spool with automatic pressure release; two ports with check valves for maximum tightness			
MAIN DIMENSIONS					
Wheelbase	in.	96			
Length	in.	157			
Width (for rear wheel track 59 in)	in.	78			
Height	in.	106			
Ground clearance	in.	18			
Wheel track – front	in.	59 – 77			
Wheel track – rear	in.	59 – 71			
Turning radius (w/o use of brakes)	ft.	12			
Weight	lbs.	8,980	9,000	9,030	9,045
Tires front		13.6R-24 (other tire sizes available)			
Tires rear		18.4R-34 (other tire sizes available)			

STANDARD EQUIPMENT

• Air compressor and tire inflator • Electric rear differential lock and front wheel drive engagement • Limited slip front differential • Ground speed PTO • Telescopic sway bars • Telescopic or hook-style lower links • Three sets of remote hydraulic outlets • Deluxe Grammer seat with three-way adjustment • Tinted windows • Front and rear wipers • Windshield washer • Air conditioning • Eight front and three rear halogen lights • Heated mirrors and rear window • Tool box • Tilt/telescoping steering wheel • Speakers and antenna for radio installation (radio not included) • Front fenders

*Contact your Zetor dealer for the latest standard and optional equipment.

OPTIONS

• Front and rear weights • Block heater • Front PTO and front 3point hitch • Air-ride seat • Instructional seat



Optional foldable instructional seat

FRONT END LOADERS

ZETOR SYSTEM 120K

High capacity, heavy-duty, quick-attach low profile front loader. Recommended for all Proxima models.

ZETOR SYSTEM 120SLI

Advanced high capacity, heavy-duty, quick-attach low profile front loader with self-leveling. Recommended for all Proxima models.

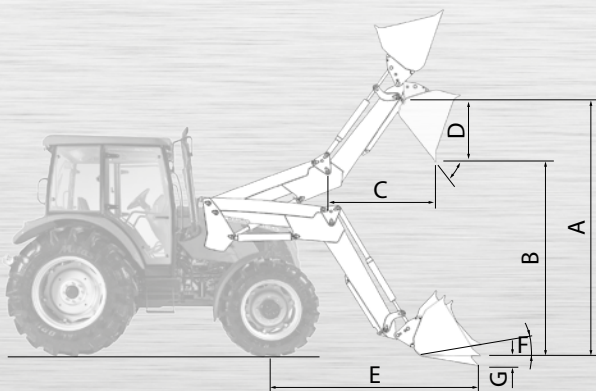
SPEED CHART OF PROXIMA POWER

AT ENGINE SPEED 2,200 (mph) and rear tires 18.4R-34

gear	FORWARD		REVERSE	
	low	high	low	high
1	1.27	5.00	1.34	5.31
2	1.47	5.79	1.56	6.15
3	1.70	6.72	1.81	7.13
4	1.87	7.40	1.99	7.87
5	2.17	8.58	2.31	9.11
6	2.52	9.95	2.68	10.57
7	3.01	11.88	3.19	12.61
8	3.48	13.74	3.70	14.59
9	4.03	15.92	4.28	16.90
10	4.38	17.29	4.65	18.36
11	5.06	19.96	5.37	21.20
12	5.86	23.13	6.22	24.56

SPECIFICATIONS

	LOADER MODEL	120K	120LSi
	Mechanical self-leveling	NO	YES
A	Maximum Lift Height (in.)	130	139
B	Clearance with Bucket Dumped (in.)	121	100
C	Reach at Maximum Height (in.)	23	28
D	Maximum Dump Angle (deg)	40	70
E	Reach on Ground (in.)	73	92
F	Bucket Rollback Angle (deg)	15	45
G	Digging Depth (in.)	5	6



LOADER MODEL		120K	120LSi
Lift Capacity to Full Height (lb.)	- at pivot points (loader w/o bucket)	4,600	3,600
	- 31.5" ahead of pivot (with bucket attached)	2,600	2,400
Breakout Force (lb)	- at pivot points (loader w/o bucket)	5,800	5,000
	- 31.5" ahead of pivot (with bucket attached)	3,600	3,800
Raising Time w/14 gpm pump (sec)		4.5	5
Bucket dump time (sec)		4.5	3.5
Bucket rollback time (sec)		3	3.5
Weight with 73" bucket (lb)		2,150	2,750

Model 120SLi is also available with larger lift cylinders. This increases all lift capacities by 30 %, but slows raising time to 6.5 sec.

Specifications measured for tire size: 13.6R-24 (front); 18.4R-34 (rear)
Specifications subject to change without notice and without incurring obligation on behalf of Zetor.



SERVICE AND WARRANTY

To ensure full productivity of your investment, all Zetor tractors are supported by the full line of parts, constantly in stock in the main parts warehouse in Jacksonville, Florida. This applies not only to current models, but also to any Zetor model ever sold in U.S. and Canada, even those sold 30 years or more ago. Zetor parts system means that our customers will always get original, genuine parts at reasonable prices. Compare some Zetor genuine parts costs with most competitors to find out why Zetor cost of ownership compares so favorably with other brands. Every business day, replacement parts are shipped within 6 hours after an order has been placed. Standard delivery is 1 to 3 business days (depending on destination) at low ground rates (coast-to-coast, U.S. and Canada). Overnight delivery is, of course, also available, coast-to-coast. And every Zetor is covered by five year limited warranty, with no deductibles. See one of Zetor dealers and check a premium-quality Zetor product offered for the price of many light-duty competitors.

ZETOR TRACTORS



Zetor is proud of many significant contributions its designers made to tractor technology throughout Zetor's 65 year history. For example, Zetormatic hydraulic power lift system with draft control was introduced as early as 1960, pioneering this concept ahead of many other manufacturers. New ideas combined with the traditional heavy Zetor chassis, its simplicity, reliability, long life and ease of repairs earned Zetor tractors respect of farmers in over 100 countries, around the world. To achieve these high standards, Zetor uses exclusively in-house designed and manufactured components, as well as highest quality components designed and manufactured in Europe and U.S. by leading companies. Final assembly is performed in Zetor's own factory in the Czech Republic under the most strict quality control. Czech Republic is a country known for its 100+ year tradition of advanced engineering and manufacturing.

www.zetorna.com

Zetor North America Inc.
877-Go-Zetor (877-469 3867)