

# LOADER BACKHOES/TRACTOR LOADER

**B95<sub>C</sub>**

**B95<sub>C</sub>TC**

**B95<sub>C</sub>LR**

**B110<sub>C</sub>**

**U80<sub>C</sub>**



- New Tier 4 Final Certified Engines to Protect the Environment
- Narrow Backhoe Boom Design for Optimal Visibility
- Outstanding Loader Bucket Breakout Forces





# C SERIES LOADER BACKHOES – BUILD MORE TIME INTO

New C Series loader backhoes with Tier 4 Final certified engines deliver the power and torque needed so you can dig, load, trench or push faster, while reducing the impact on the environment.

## MAINTENANCE-FREE BRAKES

Outboard wet disc brakes with separate Spring Applied Hydraulically Released (SAHR) parking brake provide enhanced control and significantly increased brake life. The “low effort” braking system allows the operator to apply stopping power with a minimum amount of force.

## POWERSHUTTLE OR POWERSHIFT TRANSMISSION

Choose from our robust Power Shuttle and our advanced Powershift. Our reliable PowerShuttle transmission is easy to operate, with a right-hand gear shift lever and convenient FNR shuttle lever. Choose Powershift transmission for maximum operator comfort. Operators appreciate the convenience of the powershift transmission that shifts smoothly up or down through the gears automatically locating the correct gear for the conditions.





## OUTSTANDING LOADER BUCKET BREAKOUT

By using a straight arm loader design, C series Loader backhoes deliver unmatched loader lift capacities and the loader bucket location on top of the loader frame produces exceptional bucket breakout forces.

## FAST, COMPLETE SERVICE ACCESS

The tilt-forward hood and checkpoints that are grouped together reduce maintenance time so you can maximize uptime and profits.

## INDUSTRY-LEADING COMFORT AND VISIBILITY

Comfortable operators are more productive operators, and the C Series cab is designed for maximum productivity with:

- Comfortable seating
- Greater visibility
- Ergonomic controls layout
- Available pilot controls for improved productivity and comfort
- Auto Glide Ride™ option with speed setting. Previously reserved for wheel loaders, this feature makes operation easier by helping to reduce spillage even when operating at increased speeds, and allows you to set the engagement speed.





# A MODEL TO MATCH YOUR NEEDS

The C Series loader backhoe line-up includes the B95C, B95C LR (long reach), B95C TC (tool carrier) and B110C. There's sure to be a model that's the perfect match for your operation.

Model	Gross Horsepower hp (kW)	Base Unit Weight lbs (kg)	Loader SAE Heaped Capacity cu yd (m <sup>3</sup> )
B95C	97 (72)	17,560 (7965)	1.1 (.88)
B95C TC	97 (72)	17,730 (8042)	1.3 (1.0)
B95C LR	97 (72)	18,525 (8402)	1.1 (.88)
B110C	110 (82)	18,525 (8402)	1.3 (1.0)

The B95C continues the New Holland tradition of superior power, performance and easy servicing. It's powered by a Tier 4 Final, emissions-certified diesel engine delivering 97 gross horsepower, and designed to save a minimum of 4% on fuel compared to previous models.



## LONG REACH MODEL

The B95C LR combines the compact size of the B95C with the longer stick of the B110C to provide excellent dig depth, reach and fuel consumption.





## TOOL CARRIER MODEL

The B95C TC combines the B95C's powerful backhoe with an advanced loader designed to multi-task. The standard quick coupler and self leveling loader make switching from bucket to forks a breeze.

At 110 gross horsepower the B110C delivers fast response and the power you need for loading, lifting, pushing, digging and trenching. The longer dipperstick as well as the highest reaching loader in the industry, combine with best in class lift capacity to make the B110C the top performer in whatever task you need it perform.

**B95C TC**



**B110C**





# SUPERIOR DESIGN AND BUCKET BREAKOUT FORCES

## MOVE THAT PILE

C Series loader backhoes feature a straight-arm loader linkage designed to incorporate a light weight straight arm loader to transfer loader bucket forces straight back to the main tractor frame. The straight arm loader gives New Holland unmatched lift capacity, bucket rotation and breakout force.



**OVER 11,000+ LBS.  
BUCKET BREAKOUT**

## MATERIAL HANDLING CHAMP

The B95C Tool Carrier's curved loader arms deliver true mechanical self-leveling to the loader, both up and down. This makes it ideal for material handling and use with pallet forks. Combined with the standard mechanical or optional hydraulic quick coupler, this is the most versatile machine on the job site.



## SUPERIOR BACKHOE DESIGN

Using the curved boom design of big excavators, this backhoe gives you big digging performance. With in-line cylinders, effort is reduced, visibility is better and the general digging performance is enhanced. Dual swing cylinders provide smooth movement for faster positioning of the arm over the trench and increases the stability of the machine. Choose from standard dipper or the "LR" (Long Reach) dipper for extended reach, depending on your needs. The HED (hydraulically extendable dipper) system (available with B95C & B110C) gives you the fine control needed for delicate operations when necessary. New Holland's Extendable Internal Stick vs. the Extendable Outer Stick of most manufacturers, puts less weight on the extension and affords easier maintenance.







## BEST-IN-CLASS ACCESSIBILITY

- Tilting engine hood provides excellent ground-level access to the engine and service points
- The one-piece hood remains attached, unlike some competitive models with panels that are easy to lose
- Daily check and fill points are accessible from ground level and grouped together for time and cost reduction.

On the machine's left side, just above the fuel tank, you can easily reach:

- the hydraulic pressure check points
- steering circuit
- pilot control



## ON-BOARD DIAGNOSIS

Rapid engine diagnosis is possible with the New Holland Electronic Service Tool.

## NO SEPARATE BRAKE FLUID

Hydraulic oil is used as the brake fluid, so no need to use separate tank and no risk of using the wrong fluid.



## PROTECTED BATTERY EASY TO REACH

The battery is located in the tool box on the right side, underneath the cab. By simply opening the door you have easy access to both the battery and the master switch.

# WELCOME ON BOARD

## ERGONOMIC CAB WITH EASY ACCESS

- Fully integrated loader control lever
- All loader and bucket controls are located on the joystick
- Adjustable comfortable armrest
- Standard suspension or optional air ride seats
- Unbeatable comfort on rough terrain and on the road
- Excellent ventilation with partial or full opening of both front and rear side windows
- Easy cleaning due to removable floor covering and flat cab floor
- Standard heater with optional air conditioning







## TOTAL CONTROL AT YOUR FINGERTIPS

- Industry leading fully adjustable joystick control position (Pilot controls)
- Quiet working environment: cab interior 77 dB / exterior 102 dB
- Automatic "up" stabilizers
- One touch deceleration
- Easy to read gauges
- Ultra narrow boom for enhanced visibility
- All side windows open for excellent ventilation and easy communication



# LOWER EMISSIONS, LESS FUEL

## CLEAN ENERGY

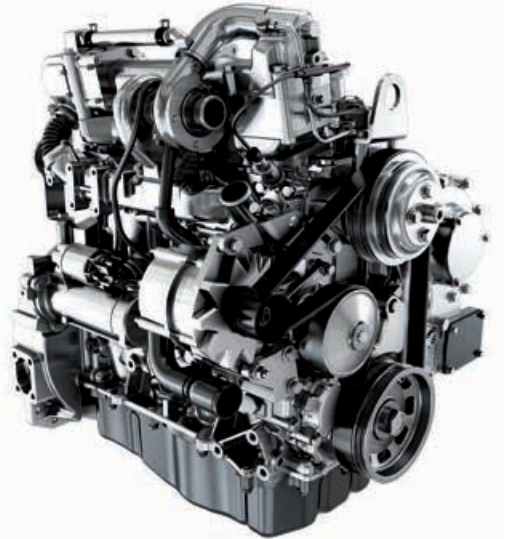
C Series loader backhoes comply with the extremely strict Tier 4 Final regulations, dramatically cutting emissions levels, with over 90% less particulate matter (PM), or soot, and 75% less nitrogen oxide (NOx) than the previous Tier 4A engines.

## FUEL EFFICIENT

The new Tier 4 Final engines provide the same power and torque as previous engines, without increasing RPM. In addition, when you don't use the full power of the machine, the variable flow hydraulic pump only uses the power required leading to significant extra-fuel savings and as well as reduced operating noise.

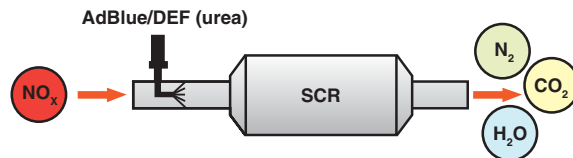
## TIER 4 FINAL EMISSIONS SOLUTION

New Holland not only meets these requirements to do what's right for you and the environment, but also achieves them in a way that meets your needs for productivity, fuel efficiency and uptime. Tier 4 standards require the reduction of the main pollutants in emissions: carbon monoxide, hydrocarbons, nitrogen oxides, and particulate matter. Emissions limits are particularly focused on curbing airborne NOx and PM.



## HOW SELECTIVE CATALYTIC REDUCTION (SCR) WORKS

With the new Tier 4 Final certified engines, New Holland's SCR solution converts Nitrogen oxides (NOx) with the aid of a catalyst into N<sub>2</sub>, H<sub>2</sub>O, and CO<sub>2</sub>. AdBlue/DEF is added and absorbed onto a catalyst. CO<sub>2</sub> is the reaction product when urea is used as the reductant. The SCR solution results in no down time that you would have with CEGR. With no recirculation equipment, you get faster throttle response and cleaner emissions.





# ATTACHMENT VERSATILITY



New Holland offers a complete line of attachments including augers, rakes, grapples, pallet forks, brooms, dozer blades, hammers and more to take on the toughest jobs. For more details contact your New Holland dealer.





# U80C TRACTOR LOADER ALSO OFFERS PROFIT-MAKING



## EASY SELF LEVELING AND LOADING

The U80C features automatic hydraulic self leveling and its curved loader arm design places the bucket closer to the front of the machine allowing the operator to place loads exactly where you want to. The unique reverse mounted loader arm cylinders give you maximum bucket breakout force and superior dump speed on the bucket.

## RUGGED 3 POINT HITCH

You get best-in-class scraping and leveling performance due to the rugged Category II 3-point hitch with adjustable sway control, controllable down pressure and optional dual tilt cylinders.

## POWER SHUTTLE TRANSMISSION

The smooth synchromesh with power shuttle lets you make smooth direction changes between the four forward and four reverse gears.

## ENGINE

The U80C meets Tier 4 Final certifications by using a Particulate Matter Catalyst (PM-Cat) solution. This solution is based on particulate matter's continuous passive regeneration of soot by NO<sub>2</sub> generated on the DOC:  $C + NO_2 = NO + CO/CO_2$





# POWER ON THE FRONT AND BACK



The curved-arm loader linkage provided on the U80C tractor loader provides hydraulic bucket leveling for less spillback, as well as excellent truck loading. The unique reverse mounted loader arm cylinders give you maximum bucket breakout force and superior dump speed on the bucket.



## SINGLE LEVER CONTROL

Fully integrated loader control lever allows the operator to control all loader and front auxiliary functions comfortably in one location.

## OPTIONAL GLIDE RIDE™

With the flip of a switch Glide Ride charges the boom cylinders, turning them into the equivalent of giant shock absorbers and stabilizing the load while traveling.

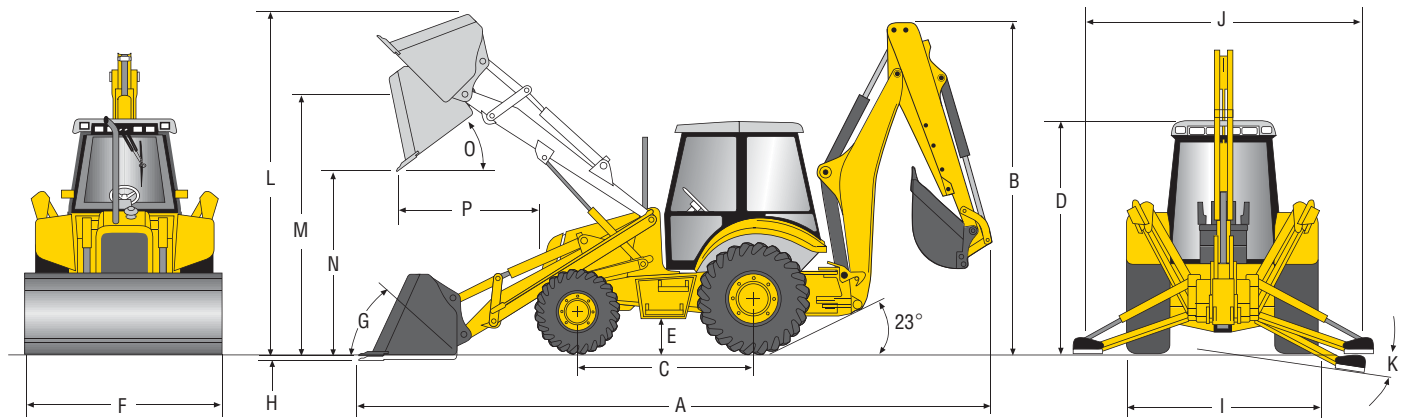
## OPTIONAL PTO

For added versatility, a 540rpm hydraulic Power Take Off (PTO) can be added to run PTO driven attachments.

Model	Gross Horsepower hp (kW)	Base Unit Weight lbs (kg)	3-Point Hitch Max Lift Force lbs. (N)	Loader SAE Heaped Capacity cu yd (m³)
U80C	74 (55)	10,916 (4951)	3,501 (15,574)	1.03 (0.79) Long Lip Bucket 1.04 (0.80) 4 in I® Bucket



# B95C SPECIFICATIONS



## DIMENSIONS

<b>A.</b>	Transport length, ft/in (mm)	23' 0" (7030)	<b>G.</b>	Bucket Rollback	
<b>B.</b>	Transport height, ft/in (mm)	12' 6" (3815)		At ground level	39°
<b>C.</b>	Wheelbase, in (mm)			Raised	45°
	2WD	85.6" (2175)	<b>H.</b>	Digging depth below grade, in (mm)	4" (100)
	4WD	85.6" (2175)	<b>I.</b>	Transport width, ft/in (mm)	7' 6" (2300)
<b>D.</b>	Height to top of cab, ft/in (mm)	9' 5" (2870)	<b>J.</b>	Stabilizer spread, operating, ft/in (mm)	10' 7" (3226)
<b>E.</b>	Ground Clearance, in (mm)	15.5" (394)	<b>K.</b>	Stabilizer spread, leveling angle	14°
<b>F.</b>	Blade width, ft/in (mm)	7' 5" (2250)			

## LOADER DIMENSIONS

		1.1 cu yd Heavy-Duty General Purpose
<b>L.</b>	Max operating height, ft/in (mm)	14' 0" (4276)
<b>M.</b>	Height to hinge pin, ft/in (mm)	11' 5" (3481)
<b>N.</b>	Dump height, ft/in (mm)	9' 2" (2784)
<b>O.</b>	Max dump angle	45°
<b>P.</b>	Reach @ 45 degree dump angle, ft/in (mm)	2' 5" (725)
	Max grading angle	116°

Unit equipped with 12-16.5 front tire, 19.5L-24 rear tire

## LOADER PERFORMANCE

	1.1 cu yd Heavy-Duty General Purpose
Linkage geometry	straight
Bucket breakout force, lbf (daN)	13,977 (6340)
Lift capacity to full height, lbs (kg)	11,118 (5043)
SAE heaped capacity, cu yd (m³)	1.1 (.88)
SAE struck capacity, cu yd (m³)	.91 (.73)
Bucket weight, lbs (kg)	682 (309)
Cutting width, in (mm)	88 (2250)
Cycle	
Raise to full height	3.70 sec
Dump time	2.00 sec
Lower	2.60 sec

## WEIGHT

Base Unit (4WD, Cab)	17,560 lbs
With options added	
2WD	-386 lbs
Canopy	-397 lbs
4x1	+969 lbs
6x1	+1,408 lbs
Std. (counterweight)	-700 lbs
Med. (counterweight)	-170 lbs

## TRANSMISSION

	Power Shuttle	Powershift
Manufacturer	Carraro	Carraro
Transmission type	Synchromesh	Hydraulic clutch packs
Gear	4F/4R	4F/3R
Max Fwd travel speed, mph (kph)	22.5 (36.2)	22.1 (35.5)

Note: Travel Speeds with 19.5L-24 Rear Tires

## ENGINE

Make and model	FPT F5BFL413B*B003
Type	Tier 4 Final certified, Diesel Oxidation Catalyst with Urea Dosing Module and Selective Catalytic Reduction, HPCR, 4-cycle diesel
Aspiration	Turbocharged Aftercooled
Rated RPM	2200
Number of cylinders	4
Displacement, cu in (l)	207 (3.4)
Horsepower, gross, hp (kW)	97 (72)
Horsepower, net hp (kW)	95 (71)
Peak torque, lb-ft (N-m) @ RPM	338 (458) @ 1400

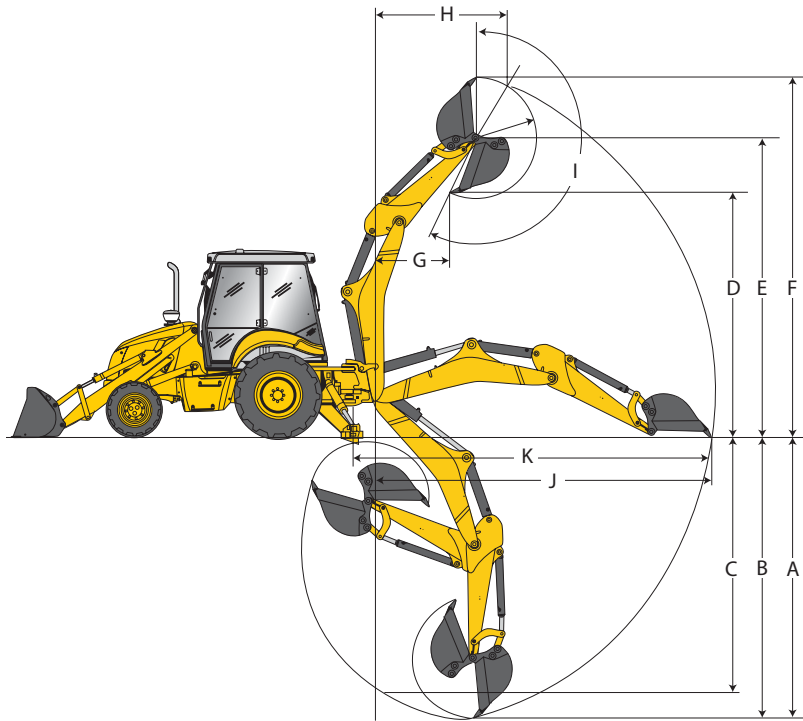
## MANEUVERABILITY

	Less Brakes	With Split Brakes
2WD curb clearance	13' 6"	12' 7"
4WD curb clearance	15' 9"	11' 5"
2WD bucket clearance	17' 9"	16' 8"
4WD bucket clearance	19' 5"	16' 6"

\*4WD, CAB, HED, Heavy Duty Counterweight, STD Bucket



# B95C SPECIFICATIONS



## HYDRAULIC SYSTEM

Pilot Control Pump	Variable displacement
System type	Open center
Main pump type	Dual gear
Pump capacity gpm (lpm)	40 (151)
System relief pressure	3,045 psi

## ELECTRICAL

Alternator output	160 amps
Battery capacity (std/opt)	1,200/900 CCA

## REFILL CAPACITIES

Fuel tank, gal (l)	34.6 (131)
DEF system, gal (l)	3.5 (13.2)
Cooling system, gal (l)	6.4 (24)
Engine oil, includes filter, gal (l)	2.1 (8.0)
Hydraulic tank, gal (l)	13.4 (50.7)
Hydraulic system, gal (l)	29 (111)

## CYLINDER SPECS

Loader cylinder	3.54" bore x 28.6" stroke
Backhoe	
Boom cylinder	5" bore x 35.71" stroke
Arm cylinder	4.75" bore x 27.64" stroke
Bucket cylinder	3.5" bore x 30.16" stroke
Swing cylinder	4.33" bore x 9.38" stroke

## SERVICE INTERVALS

Engine oil	500 hours
Hydraulic oil filter	1,000 hours
Engine coolant	2,000 hours
Rear axle oil	1,000 hours

## BACKHOE DIMENSIONS

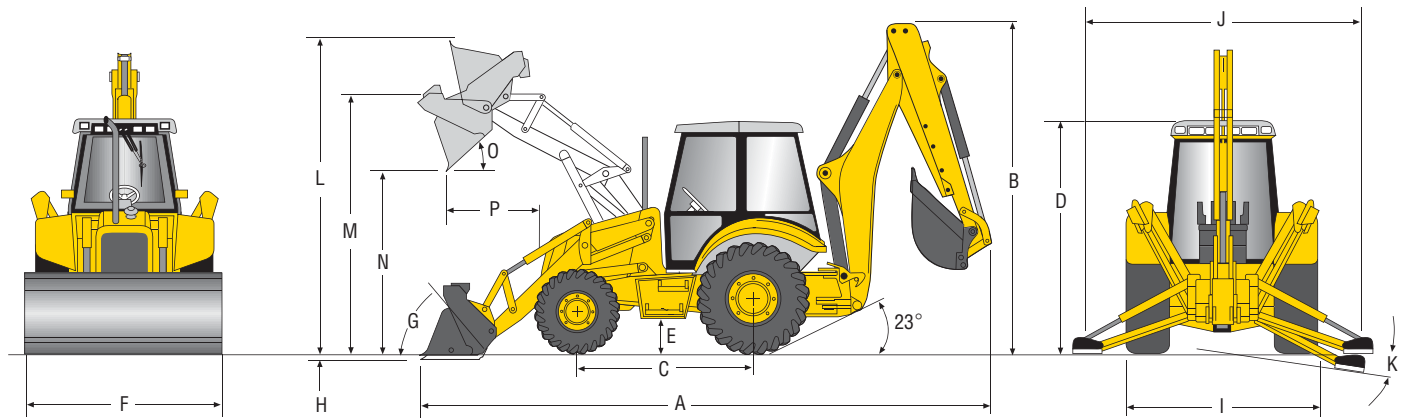
		Standard	Retracted	Extended
A	Max dig depth, ft/in (mm)	14' 6" (4426)	15' 1" (4586)	18' 5" (5623)
B	Dig depth, 2' flat bottom, ft/in (mm)	14' 5" (4398)	14' 11" (4556)	18' 4" (5589)
C	Dig depth, 8' flat bottom, ft/in (mm)	13' 3" (4034)	13' 10" (4206)	17' 5" (5310)
D	Loading Height, ft/in (mm)	12' 1" (3673)	12' 5" (3784)	14' 7" (4450)
E	Max pin height, ft/in (mm)	14' 10" (4513)	15' 2" (4613)	18' 8" (5698)
F	Max operating height, ft/in (mm)	17' 10" (5441)	18' 2" (5539)	20' 4" (6206)
G	Loading Reach @ max height, ft/in (mm)	4' 6" (1362)	4' 10" (1461)	7' 5" (2272)
H	Dig reach @ max height, ft/in (mm)	6' 8" (2040)	7' 3" (2208)	9' 11" (3019)
I	Bucket rotation (max)	203°	203°	203°
J	Reach from swing post, ft/in (mm)	17' 0" (5186)	17' 6" (5327)	20' 7" (6279)
K	Reach (overall), ft/in (mm)	18' 4" (5589)	18' 10" (5730)	21' 11" (6682)

## BACKHOE PERFORMANCE

	Standard	Retracted	Extended
Bucket capacity, cu ft (m³)	7.5 (.21)	7.5 (.21)	7.5 (.21)
Bucket digging force, lbs (kg)	12,933 (5866)	12,969 (5883)	12,969 (5883)
Crowd digging force, lbs (kg)	8,588 (3895)	8,100 (3674)	5782 (2623)
Boom lift @ -8 ft, lbs (kg)	3,025 (1370)	2,555 (1180)	2,180 (990)
Dipper lift @ +10 ft, lbs (kg)	5,990 (2715)	5,405 (2450)	3,730 (1690)



# B95C TC SPECIFICATIONS



## DIMENSIONS

<b>A.</b>	Transport length, ft/in (mm)	24' 0" (7325)	<b>G.</b>	Bucket Rollback	
<b>B.</b>	Transport height, ft/in (mm)	12' 6" (3815)		At ground level	43°
<b>C.</b>	Wheelbase, in (mm)			Raised	Adjustable
	2WD	85.6" (2175)	<b>H.</b>	Digging depth below grade, in (mm)	5" (120)
	4WD	85.6" (2175)	<b>I.</b>	Transport width, ft/in (mm)	7' 6" (2300)
<b>D.</b>	Height to top of cab, ft/in (mm)	9' 5" (2870)	<b>J.</b>	Stabilizer spread, operating, ft/in (mm)	10' 7" (3226)
<b>E.</b>	Ground Clearance, in (mm)	15.5" (394)	<b>K.</b>	Stabilizer spread, leveling angle	14°
<b>F.</b>	Blade width, ft/in (mm)	7' 5" (2250)			

## LOADER DIMENSIONS

		<b>1.3 cu yd Heavy-Duty General Purpose</b>
<b>L.</b>	Max operating height, ft/in (mm)	13' 11" (4250)
<b>M.</b>	Height to hinge pin, ft/in (mm)	11' 4" (3458)
<b>N.</b>	Dump height, ft/in (mm)	10' 7" (3218)
<b>O.</b>	Max dump angle	45°
<b>P.</b>	Reach @ 45 degree dump angle, ft/in (mm)	2' 9" (829)
	Max grading angle	116°

Unit equipped with 12-16.5 front tire, 19.5L-24 rear tire

## LOADER PERFORMANCE

	<b>1.3 cu yd Heavy-Duty General Purpose</b>
Linkage geometry	curved
Bucket breakout force, lbf (daN)	14,427 (6544)
Lift capacity to full height, lbs (kg)	8,610 (3906)
SAE heaped capacity, cu yd (m³)	1.3 (1.0)
SAE struck capacity, cu yd (m³)	1.1 (.82)
Bucket weight, lbs (kg)	880 (399)
Cutting width, in (mm)	89 (2250)
Cycle	
Raise to full height	3.70 sec
Dump time	2.00 sec
Lower	2.60 sec

## WEIGHT

Base Unit (4WD, Cab), lbs (kg)	17,730 (8042)
With options added	
2WD	-386 lbs
Canopy	-397 lbs
4x1	+770 lbs
6x1	+1,810 lbs
Std. (counterweight)	-700 lbs
Med. (counterweight)	-170 lbs

## TRANSMISSION

	<b>Power Shuttle</b>	<b>Powershift</b>
Manufacturer	Carraro	Carraro
Transmission type	Synchromesh	Hydraulic clutch packs
Gear	4F/4R	4F/3R
Max Fwd travel speed, mph (kph)	22.5 (36.2)	22.1 (35.5)

Note: Travel Speeds with 19.5L-24 Rear Tires

## ENGINE

Make and model	F5BFL413B*B003
Type	Tier 4 Final certified, Diesel Oxidation Catalyst with Urea Dosing Module and Selective Catalytic Reduction, HPCR, 4-cycle diesel
Aspiration	Turbocharged Aftercooled
Rated RPM	2200 RPM
Number of cylinders	4
Displacement, cu in (l)	207 (3.4)
Horsepower, gross, hp (kW)	97 (72)
Horsepower, net hp (kW)	95 (71)
Peak torque, lb-ft (N-m) @ RPM	338 (458) @ 1400

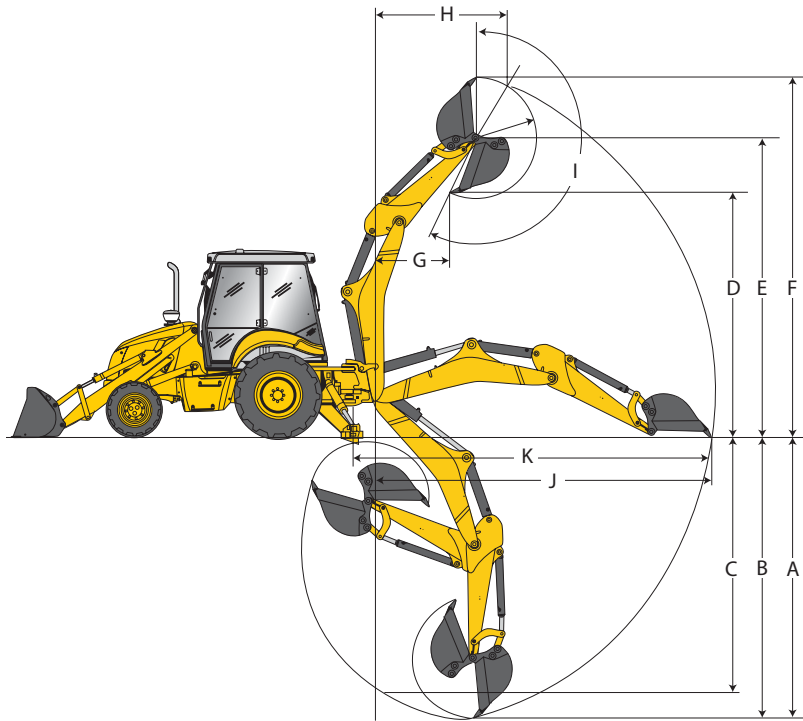
## MANEUVERABILITY

	<b>Less Brakes</b>	<b>With Split Brakes</b>
2WD curb clearance	13' 6"	12' 7"
4WD curb clearance	15' 9"	11' 5"
2WD bucket clearance	17' 9"	16' 8"
4WD bucket clearance	19' 5"	16' 6"

\*4WD, CAB, HED, Heavy Duty Counterweight, STD Bucket



# B95C TC SPECIFICATIONS



## HYDRAULIC SYSTEM

Pilot Control Pump	Variable displacement
System type	Open center
Main pump type	Dual gear
Pump capacity gpm (lpm)	40 (151)
System relief pressure	3,045 psi

## ELECTRICAL

Alternator output	160 amps
Battery capacity (std/opt)	1,200/900 CCA

## REFILL CAPACITIES

Fuel tank, gal (l)	34.6 (131)
DEF system, gal (l)	3.5 (13.2)
Cooling system, gal (l)	6.4 (24)
Engine oil, includes filter, gal (l)	2.1 (8.0 L)
Hydraulic tank, gal (l)	13.4 (50.7)
Hydraulic system, gal (l)	29 (111)

## CYLINDER SPECS

Loader cylinder	3.54" bore x 28.6" stroke
Backhoe	
Boom cylinder	5" bore x 35.71" stroke
Arm cylinder	4.75" bore x 27.64" stroke
Bucket cylinder	3.5" bore x 30.16" stroke
Swing cylinder	4.33" bore x 9.38" stroke

## SERVICE INTERVALS

Engine oil	500 hours
Hydraulic oil filter	1,000 hours
Engine coolant	2,000 hours
Rear axle oil	1,000 hours

## BACKHOE DIMENSIONS

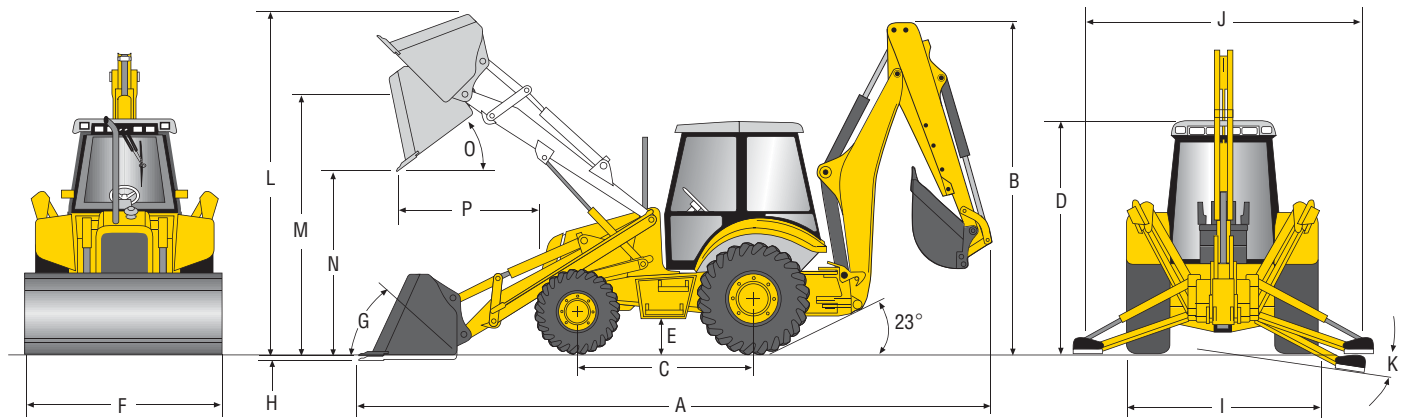
		Standard	Retracted	Extended
A	Max dig depth, ft/in (mm)	14' 6" (4426)	15' 1" (4586)	18' 5" (5623)
B	Dig depth, 2' flat bottom, ft/in (mm)	14' 5" (4398)	14' 11" (4556)	18' 4" (5589)
C	Dig depth, 8' flat bottom, ft/in (mm)	13' 3" (4034)	13' 10" (4206)	17' 5" (5310)
D	Loading Height, ft/in (mm)	12' 1" (3673)	12' 5" (3784)	14' 7" (4450)
E	Max pin height, ft/in (mm)	14' 10" (4513)	15' 2" (4613)	18' 8" (5698)
F	Max operating height, ft/in (mm)	17' 10" (5441)	18' 2" (5539)	20' 4" (6206)
G	Loading Reach @ max height, ft/in (mm)	4' 6" (1362)	4' 10" (1461)	7' 5" (2272)
H	Dig reach @ max height, ft/in (mm)	6' 8" (2040)	7' 3" (2208)	9' 11" (3019)
I	Bucket rotation (max)	203°	203°	203°
J	Reach from swing post, ft/in (mm)	17' 0" (5186)	17' 6" (5327)	20' 7" (6279)
K	Reach (overall), ft/in (mm)	18' 4" (5589)	18' 10" (5730)	21' 11" (6682)

## BACKHOE PERFORMANCE

	Standard	Retracted	Extended
Bucket capacity, cu ft (m³)	7.5 (.21)	7.5 (.21)	7.5 (.21)
Bucket digging force, lbs (kg)	12,933 (5866)	12,969 (5883)	12,969 (5883)
Crowd digging force, lbs (kg)	8,588 (3895)	8,100 (3674)	5782 (2623)
Boom lift @ -8 ft, lbs (kg)	3,025 (1370)	2,555 (1180)	2,180 (990)
Dipper lift @ +10 ft, lbs (kg)	5,990 (2715)	5,405 (2450)	3,730 (1690)



# B95C LR SPECIFICATIONS



## DIMENSIONS

<b>A.</b>	Transport length, ft/in (mm)	23' 0" (7030)	<b>G.</b>	Bucket Rollback	
<b>B.</b>	Transport height, ft/in (mm)	12' 6" (3815)		At ground level	39°
<b>C.</b>	Wheelbase, in (mm)			Raised	45°
	2WD	85.6" (2175)	<b>H.</b>	Digging depth below grade, in (mm)	4" (100)
	4WD	85.6" (2175)	<b>I.</b>	Transport width, ft/in (mm)	7' 6" (2300)
<b>D.</b>	Height to top of cab, ft/in (mm)	9' 5" (2870)	<b>J.</b>	Stabilizer spread, operating, ft/in (mm)	10' 7" (3226)
<b>E.</b>	Ground Clearance, in (mm)	15.5" (394)	<b>K.</b>	Stabilizer spread, leveling angle	14°
<b>F.</b>	Blade width, ft/in (mm)	7' 5" (2250)			

## LOADER DIMENSIONS

		1.1 cu yd Heavy-Duty General Purpose
<b>L.</b>	Max operating height, ft/in (mm)	14' 0" (4276)
<b>M.</b>	Height to hinge pin, ft/in (mm)	11' 5" (3481)
<b>N.</b>	Dump height, ft/in (mm)	9' 2" (2784)
<b>O.</b>	Max dump angle	45°
<b>P.</b>	Reach @ 45 degree dump angle, ft/in (mm)	2' 5" (725)
	Max grading angle	116°

Unit equipped with 12-16.5 front tire, 19.5L-24 rear tire

## LOADER PERFORMANCE

	1.1 cu yd Heavy-Duty General Purpose
Linkage geometry	straight
Bucket breakout force, lbf (daN)	13,977 (6340)
Lift capacity to full height, lbs (kg)	11,118 (5043)
SAE heaped capacity, cu yd (m³)	1.1 (.88)
SAE struck capacity, cu yd (m³)	.91 (.73)
Bucket weight, lbs (kg)	682 (309)
Cutting width, in (mm)	88 (2250)
Cycle	
Raise to full height	3.70 sec
Dump time	2.00 sec
Lower	2.60 sec

## WEIGHT

Base Unit (4WD, Cab, HED)	18,525 lbs
With options added	
2WD	-386 lbs
Canopy	-397 lbs
4x1	+969 lbs
6x1	+1,408 lbs
Std. (counterweight)	N/A
Med. (counterweight)	N/A

## TRANSMISSION

	Power Shuttle	Powershift
Manufacturer	Carraro	Carraro
Transmission type	Synchromesh	Hydraulic clutch packs
Gear	4F/4R	4F/3R
Max Fwd travel speed, mph (kph)	22.5 (36.2)	22.1 (35.5)

Note: Travel Speeds with 19.5L-24 Rear Tires

## ENGINE

Make and model	F5BFL413B*B003
Type	Tier 4 Final certified, Diesel Oxidation Catalyst with Urea Dosing Module and Selective Catalytic Reduction, HPCR, 4-cycle diesel
Aspiration	Turbocharged Aftercooled
Rated RPM	2200 RPM
Number of cylinders	4
Displacement, cu in (l)	207 (3.4)
Horsepower, gross, hp (kW)	97 (72)
Horsepower, net hp (kW)	95 (71)
Peak torque, lb-ft (N-m) @ RPM	338 (458) @ 1400

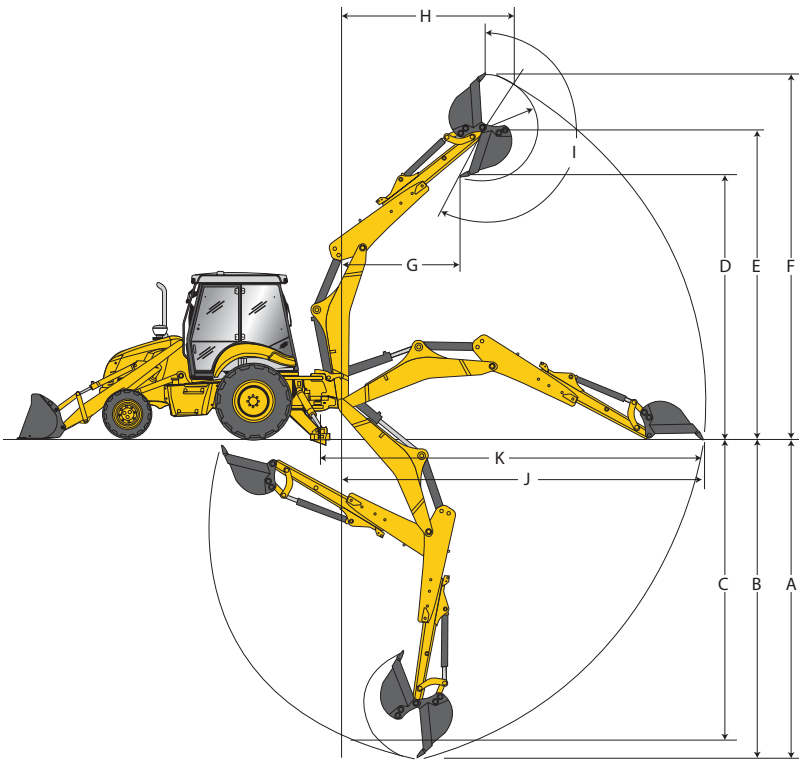
## MANEUVERABILITY

	Less Brakes	With Split Brakes
2WD curb clearance	13' 6"	12' 7"
4WD curb clearance	15' 9"	11' 5"
2WD bucket clearance	17' 9"	16' 8"
4WD bucket clearance	19' 5"	16' 6"

\*4WD, CAB, HED, Heavy Duty Counterweight, STD Bucket



# B95C LR SPECIFICATIONS



## HYDRAULIC SYSTEM

Pilot Control Pump	Variable displacement
System type	Open center
Main pump type	Dual gear
Pump capacity gpm (lpm)	40 (151)
System relief pressure	3,045 psi

## ELECTRICAL

Alternator output	160 amps
Battery capacity (std/opt)	1,200/900 CCA

## REFILL CAPACITIES

Fuel tank, gal (l)	34.6 (131)
DEF system, gal (l)	3.5 (13.2)
Cooling system, gal (l)	6.4 (24)
Engine oil, includes filter, gal (l)	2.1 (8.0)
Hydraulic tank, gal (l)	13.4 (50.7)
Hydraulic system, gal (l)	29 (111)

## CYLINDER SPECS

Loader cylinder	3.54" bore x 28.6" stroke
Backhoe	
Boom cylinder	5" bore x 35.71" stroke
Arm cylinder	4.75" bore x 27.64" stroke
Bucket cylinder	3.5" bore x 30.16" stroke
Swing cylinder	4.33" bore x 9.38" stroke

## SERVICE INTERVALS

Engine oil	500 hours
Hydraulic oil filter	1,000 hours
Engine coolant	2,000 hours
Rear axle oil	1,000 hours

## BACKHOE DIMENSIONS

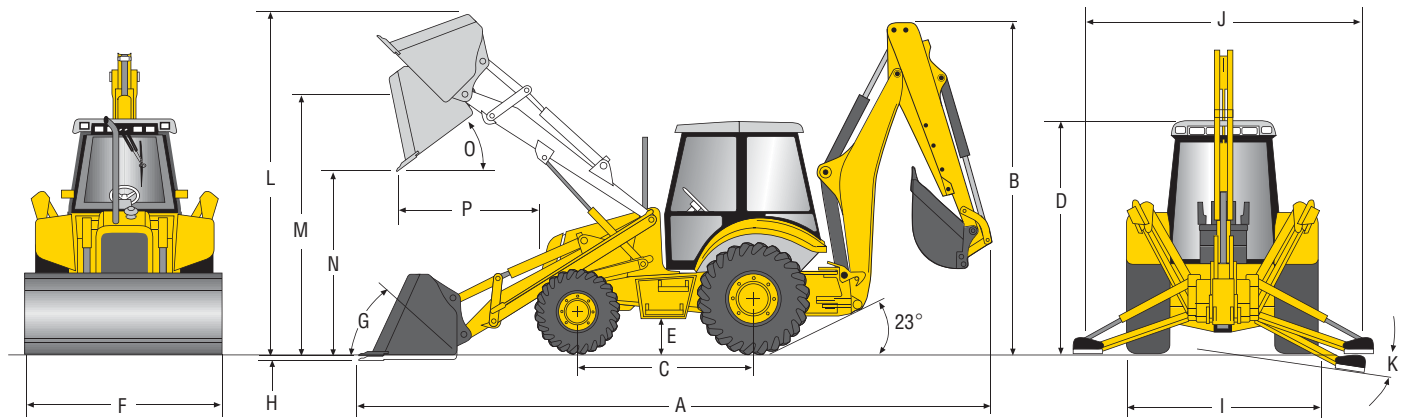
		Standard	Retracted	Extended
A	Max dig depth, ft/in (mm)	15' 6" (4727)	15' 6" (4735)	18' 11" (5770)
B	Dig depth, 2' flat bottom, ft/in (mm)	15' 5" (4695)	15' 5" (4703)	18' 10" (5735)
C	Dig depth, 8' flat bottom, ft/in (mm)	14' 4" (4356)	14' 4" (4364)	17' 11" (5463)
D	Loading Height, ft/in (mm)	12' 4" (3768)	12' 4" (3770)	14' 6" (4431)
E	Max pin height, ft/in (mm)	16' 4" (4969)	15' 5" (4698)	17' 7" (5359)
F	Max operating height, ft/in (mm)	18' 5" (5624)	18' 6" (5625)	20' 7" (6285)
G	Loading Reach @ max height, ft/in (mm)	5' 4" (1615)	5' 2" (1582)	7' 10" (2398)
H	Dig reach @ max height, ft/in (mm)	7' 6" (2294)	7' 8" (2341)	10' 4" (3157)
I	Bucket rotation (max)	203°	203°	203°
J	Reach from swing post, ft/in (mm)	17' 11" (5450)	17' 11" (5456)	21' 0" (6409)
K	Reach (overall), ft/in (mm)	19' 3" (5853)	19' 3" (5859)	22' 4" (6814)

## BACKHOE PERFORMANCE

	Standard	Retracted	Extended
Bucket capacity, cu ft (m³)	8.5 (.24)	8.5 (.24)	8.5 (.24)
Bucket digging force, lbs (kg)	12,969 (5883)	12,969 (5883)	12,969 (5883)
Crowd digging force, lbs (kg)	8,520 (3868)	8,483 (3848)	6032 (2736)
Boom lift @ -8 ft, lbs (kg)	3,380 (1530)	3,000 (1360)	2,485 (1125)
Dipper lift @ +10 ft, lbs (kg)	6,275 (2845)	5,995 (2720)	4,080 (1850)



# BI10C SPECIFICATIONS



## DIMENSIONS

<b>A.</b>	Transport length, ft/in (mm)	23' 0" (7030)	<b>G.</b>	Bucket Rollback	
<b>B.</b>	Transport height, ft/in (mm)	12' 6" (3815)		At ground level	39°
<b>C.</b>	Wheelbase, in (mm)			Raised	48°
	2WD	85.6" (2175)	<b>H.</b>	Digging depth below grade, in (mm)	4" (100)
	4WD	85.6" (2175)	<b>I.</b>	Transport width, ft/in (mm)	7' 6" (2300)
<b>D.</b>	Height to top of cab, ft/in (mm)	9' 5" (2870)	<b>J.</b>	Stabilizer spread, operating, ft/in (mm)	10' 7" (3226)
<b>E.</b>	Ground Clearance, in (mm)	15.5" (394)	<b>K.</b>	Stabilizer spread, leveling angle	14°
<b>F.</b>	Blade width, ft/in (mm)	7' 5" (2250)			

## LOADER DIMENSIONS

		<b>1.1 cu yd Heavy-Duty General Purpose</b>
<b>L.</b>	Max operating height, ft/in (mm)	14' 2" (4309)
<b>M.</b>	Height to hinge pin, ft/in (mm)	11' 5" (3481)
<b>N.</b>	Dump height, ft/in (mm)	9' 2" (2784)
<b>O.</b>	Max dump angle	45°
<b>P.</b>	Reach @ 45 degree dump angle, ft/in (mm)	2' 4" (706)
	Max grading angle	116°

Unit equipped with 12-16.5 front tire, 19.5L-24 rear tire

## LOADER PERFORMANCE

	<b>1.3 cu yd Heavy-Duty General Purpose</b>
Linkage geometry	straight
Bucket breakout force, lbf (daN)	13,977 (6340)
Lift capacity to full height, lbs (kg)	10,957 (4970)
SAE heaped capacity, cu yd (m³)	1.3 (1.0)
SAE struck capacity, cu yd (m³)	1.1 (.82)
Bucket weight, lbs (kg)	880 (399)
Cutting width, in (mm)	89 (2250)
Cycle	
Raise to full height	3.70 sec
Dump time	2.00 sec
Lower	2.60 sec

## WEIGHT

Base Unit (4WD, Cab, HED)	18,525 lbs
With options added	
2WD	-386 lbs
Canopy	-397 lbs
4x1	+969 lbs
6x1	+1,408 lbs
Std. (counterweight)	-700 lbs
Med. (counterweight)	-170 lbs

## TRANSMISSION

	<b>Power Shuttle</b>	<b>Powershift</b>
Manufacturer	Carraro	Carraro
Transmission type	Synchromesh	Hydraulic clutch packs
Gear	4F/4R	4F/3R
Max Fwd travel speed, mph (kph)	22.5 (36.2)	22.1 (35.5)

Note: Travel Speeds with 19.5L-24 Rear Tires

## ENGINE

Make and model	F5BFL413A*B006
Type	Tier 4 Final certified, Diesel Oxidation Catalyst with Urea Dosing Module and Selective Catalytic Reduction, HPCR, 4-cycle diesel
Aspiration	Turbocharged Aftercooled
Rated RPM	2200 RPM
Number of cylinders	4
Displacement, cu in (l)	207 (3.4)
Horsepower, gross, hp (kW)	110 (82)
Horsepower, net hp (kW)	108 (81)
Peak torque, lb-ft (N-m) @ RPM	344 (466) @ 1400

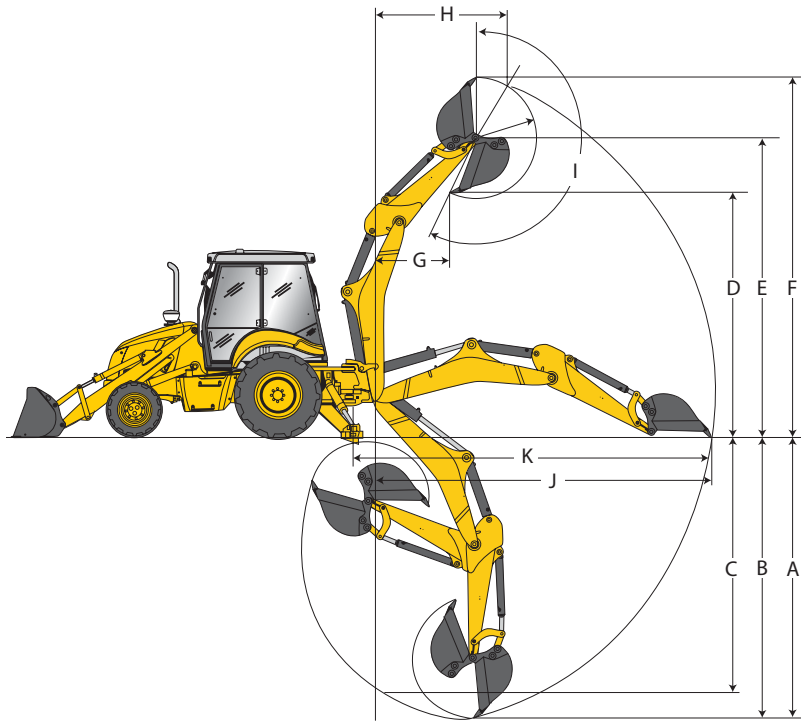
## MANEUVERABILITY

	<b>Less Brakes</b>	<b>With Split Brakes</b>
2WD curb clearance	13' 6"	12' 7"
4WD curb clearance	15' 9"	11' 5"
2WD bucket clearance	17' 9"	16' 8"
4WD bucket clearance	19' 5"	16' 6"

\*4WD, CAB, HED, Heavy Duty Counterweight, STD Bucket



# BI10C SPECIFICATIONS



## HYDRAULIC SYSTEM

Pilot Control Pump	Variable displacement
System type	Open center
Main pump type	Dual gear
Pump capacity gpm (lpm)	40 (151)
System relief pressure	3,045 psi

## ELECTRICAL

Alternator output	160 amps
Battery capacity (std/opt)	1,200/900 CCA

## REFILL CAPACITIES

Fuel tank, gal (l)	34.6 (131)
DEF system, gal (l)	3.5 (13.2)
Cooling system, gal (l)	6.4 (24)
Engine oil, includes filter, gal (l)	2.1 (8.0)
Hydraulic tank, gal (l)	13.4 (50.7)
Hydraulic system, gal (l)	36.1 (136.8)

## CYLINDER SPECS

Loader cylinder	3.54" bore x 28.6" stroke
Backhoe	
Boom cylinder	5" bore x 35.71" stroke
Arm cylinder	4.75" bore x 27.64" stroke
Bucket cylinder	3.5" bore x 30.16" stroke
Swing cylinder	4.33" bore x 9.38" stroke

## SERVICE INTERVALS

Engine oil	500 hours
Hydraulic oil filter	1,000 hours
Engine coolant	2,000 hours
Rear axle oil	1,000 hours

## BACKHOE DIMENSIONS

		Standard	Retracted	Extended
A	Max dig depth, ft/in (mm)	15' 6" (4727)	15' 6" (4735)	18' 11" (5770)
B	Dig depth, 2' flat bottom, ft/in (mm)	15' 5" (4695)	15' 5" (4703)	18' 10" (5735)
C	Dig depth, 8' flat bottom, ft/in (mm)	14' 4" (4356)	14' 4" (4364)	17' 11" (5463)
D	Loading Height, ft/in (mm)	12' 8" (3851)	12' 8" (3872)	14' 10" (4533)
E	Max pin height, ft/in (mm)	16' 4" (4969)	15' 5" (4698)	17' 7" (5359)
F	Max operating height, ft/in (mm)	18' 5" (5624)	18' 6" (5625)	20' 7" (6285)
G	Loading Reach @ max height, ft/in (mm)	5' 4" (1615)	5' 2" (1582)	7' 10" (2398)
H	Dig reach @ max height, ft/in (mm)	7' 6" (2294)	7' 8" (2341)	10' 4" (3157)
I	Bucket rotation (max)	203°	203°	203°
J	Reach from swing post, ft/in (mm)	17' 11" (5450)	17' 11" (5456)	21' 0" (6409)
K	Reach (overall), ft/in (mm)	19' 3" (5853)	19' 3" (5859)	22' 4" (6812)

## BACKHOE PERFORMANCE

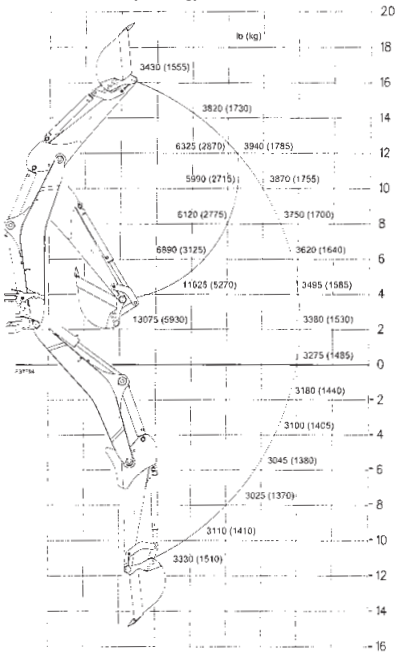
	Standard	Retracted	Extended
Bucket capacity, cu ft (m³)	8.5 (.24)	8.5 (.24)	8.5 (.24)
Bucket digging force, lbs (kg)	12,969 (5883)	12,969 (5883)	12,969 (5883)
Crowd digging force, lbs (kg)	8,520 (3868)	8,483 (3848)	6032 (2736)
Boom lift @ -8 ft, lbs (kg)	3,380 (1530)	3,000 (1360)	2,485 (1125)
Dipper lift @ +10 ft, lbs (kg)	6,275 (2845)	5,995 (2720)	4,080 (1850)



# B95C B95C TC LIFT CAPACITIES

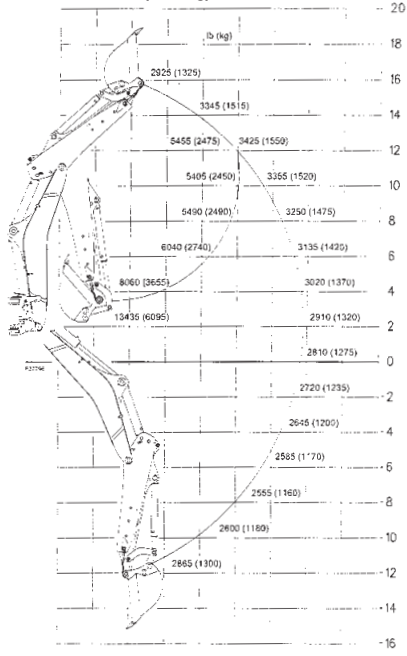
## LIFT CAPACITIES

**BACKHOE BOOM AND SHORT  
BACKHOE DIPPER  
WITH HD BACKHOE BUCKET  
610 mm (156 kg) / Loader Bucket 6 x 1**



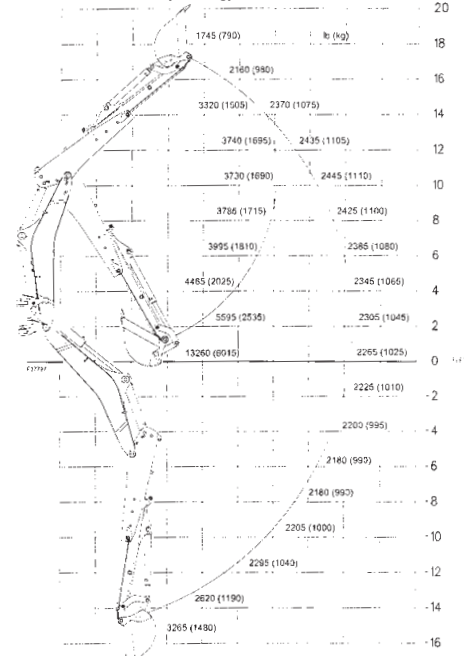
SAE 3,045 psi  
P=210 Bar  
Front Counterweight  
Front Tires: 12-16.5 (contractor 4WD)  
Rear Tires: 19.5L-24 (Ind.Tract. Lug R4)

**BACKHOE BOOM AND SHORT  
TELESCOPIC DIPPER  
RETRACTED WITH HD BACKHOE BUCKET  
610 mm (156 kg) / Loader Bucket 6 x 1**



SAE 3,045 psi  
P=210 Bar  
Front Counterweight  
Front Tires: 12-16.5 (contractor 4WD)  
Rear Tires: 19.5L-24 (Ind.Tract. Lug R4)

**BACKHOE BOOM AND SHORT  
TELESCOPIC DIPPER  
EXTENDED WITH HD BACKHOE BUCKET  
610 mm (156 kg) / Loader Bucket 6 x 1**

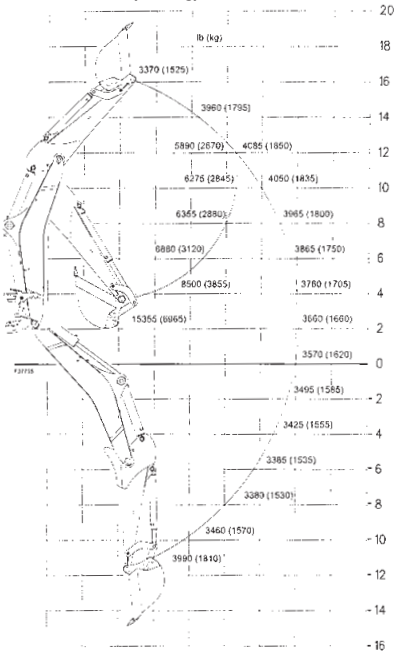


SAE 3,045 psi  
P=210 Bar  
Front Counterweight  
Front Tires: 12-16.5 (contractor 4WD)  
Rear Tires: 19.5L-24 (Ind.Tract. Lug R4)

# B95C LR B110C LIFT CAPACITIES

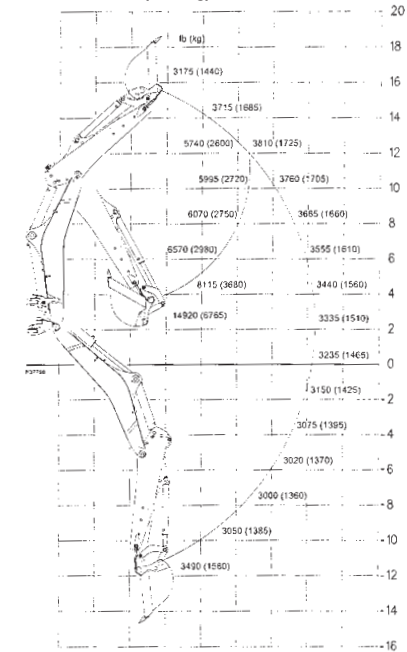
## LIFT CAPACITIES

**BACKHOE BOOM AND LONG  
BACKHOE DIPPER  
WITH HD BACKHOE BUCKET  
610 mm (156 kg) / Loader Bucket 6 x 1**



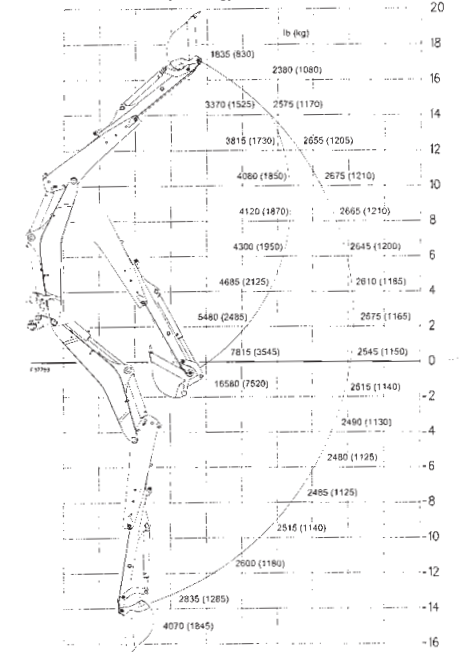
SAE 3,045 psi  
P=210 Bar  
Front Counterweight  
Front Tires: 12-16.5 (contractor 4WD)  
Rear Tires: 19.5L-24 (Ind.Tract. Lug R4)

**BACKHOE BOOM AND LONG  
TELESCOPIC DIPPER  
RETRACTED WITH HD BACKHOE BUCKET  
610 mm (156 kg) / Loader Bucket 6 x 1**



SAE 3,045 psi  
P=210 Bar  
Front Counterweight  
Front Tires: 12-16.5 (contractor 4WD)  
Rear Tires: 19.5L-24 (Ind.Tract. Lug R4)

**BACKHOE BOOM AND LONG  
TELESCOPIC DIPPER  
EXTENDED WITH HD BACKHOE BUCKET  
610 mm (156 kg) / Loader Bucket 6 x 1**



SAE 3,045 psi  
P=210 Bar  
Front Counterweight  
Front Tires: 12-16.5 (contractor 4WD)  
Rear Tires: 19.5L-24 (Ind.Tract. Lug R4)



# B95C B95C TC B95C LR

## BASE & OPTIONAL EQUIPMENT

### BASE EQUIPMENT

#### ENGINE

Dry dual-element air cleaner  
Fuel filter w/ water separator  
10 micron paper filter  
Glow Plugs  
FPT F5BFL413B Diesel  
Diesel Oxidation Catalyst with SCR  
Full flow engine oil filter  
Electronic throttles – foot and rotary hand  
Self-adjusting belt  
High Pressure Common Rail

#### TRANSMISSION

Power shuttle fully synchronized gearbox,  
4 forward/4 reverse speeds, and power-reversing torque converter  
Two position electric disconnect on loader control and gearshift

#### OUTBOARD REAR AXLE/BRAKES

Planetary final drives  
Button activated differential lock  
Multi-plate, hydraulic, self-adjusting, self-equalizing outboard wet disc brakes  
Independent SAHR parking/emergency brake

#### FRONT AXLE

74" tread width  
8-bolt wheel hubs  
Hydrostatic power steering with priority valve  
Integrated steering cylinder  
2WD axle: cast iron  
FWD axle: cast iron  
FWD electrical engagement with indicator light

#### ELECTRICAL

12-volt system  
160-amp high-capacity alternator  
Single battery  
Sealed fuseblock compartment  
Water resistant main fuseblock

#### LIGHTING

4 Halogen worklights on canopy  
8 Halogen worklights on cab  
Stop and turn signals  
Four-way safety flashers

#### BACKHOE

Includes: Curved boom, Center pivot swing post, Boom cylinder, and Dipper cylinder  
Dipper cylinder and dipstick  
2-lever backhoe controls (SAE Pattern)  
Dirt pads  
Front counterweight - 282 lbs.  
Backhoe bucket not included

#### OPERATOR'S STATION (ROPS)

Dual side entry flat deck  
Interior rearview mirror  
Built-in beverage holder  
Key start switch with electric shut-off  
2-position horn control  
Electric analog instrumentation  
Tachometer/hourmeter  
Fuel gauge

DEF gauge  
Fixed steering wheel  
Auxiliary 12-volt output/cigarette lighter  
Pre-wired for emergency beacon  
Pre-wired for road headlights  
Vinyl suspension seat  
2-inch retractable seatbelt

#### OPERATOR'S STATION (CAB)

Dual side entry flat deck  
Interior rearview mirror  
Built-in beverage holder  
Coat hook  
Pre-wired for radio  
Key start switch with electric shut-off  
Headliner  
2-position horn control  
Molded floor mat  
Electric instrumentation  
Tachometer/hourmeter  
Fuel gauge  
DEF gauge  
Interior dome light  
Fixed steering wheel  
Auxiliary 12-volt output/cigarette lighter  
Pre-wired for emergency beacon  
Pre-wired for road headlights  
Adjustable side window openings  
One-piece rear window  
Adjustable heater/blower fan  
Adjustable front sun-screen shade  
Cloth suspension seat  
2-inch retractable seatbelt  
Heater

#### LOADER

Straight loader arm design (B95C, B95C LR)  
Curved loader arm design (B95C TC)  
4-Bar bucket linkage  
Bucket level indicator  
Return-to-dig feature  
Dual lift and bucket cylinders  
Hydromechanical self-leveling (B95C, B95C LR)  
Single lever control  
Loader arm support  
1.1 yd<sup>3</sup> heavy duty bucket (B95C, B95C LR)  
1.3 yd<sup>3</sup> heavy duty bucket (B95C TC)  
Bolt-on cutting edge  
Mechanical self leveling (B95C TC)

#### HYDRAULICS

O-ring Face seal connectors  
"PD" type diagnostic port connectors  
Open center coaxial drive hydraulic pump  
7 micron spin-on filter element  
Mechanical, Gear Pump - 151 L/min (40 gpm)  
Pilot, Axial Piston Pump - 6 to 156 L/min (1.6 to 41.2 gpm)

#### SAFETY AND SECURITY

4-Post ROPS/FOPS  
Lockable Compartments for: Engine, Hydraulic System, Battery  
Lockable fuel & DEF cap  
Horn  
Backup alarm

### OPTIONAL EQUIPMENT

#### ENGINE

\*110-volt engine block heater

#### ELECTRICAL

Dual batteries

#### BACKHOE

2-lever pilot controls with pattern changer  
\*Mechanical backhoe bucket quick coupler  
4-lever backhoe controls  
2-lever ISO excavator pattern backhoe controls  
HED extendible dipperstick  
Multiple bucket options from factory  
Heavy-duty and extra heavy-duty backhoe buckets  
Flip over stabilizer pads

#### OPERATOR'S STATION (ROPS)

Electric ON/OFF control of hydraulic hand tool function  
Foot-activated switch control of backhoe hammer

#### OPERATOR'S STATION (CAB)

Air conditioning system  
Electric ON/OFF control of hydraulic hand tool function  
Foot-activated switch control of backhoe hammer  
3-inch retractable seatbelt  
Tilt steering wheel  
Super deluxe Air Ride seat  
Vinyl suspension seat

#### LOADER

Multiple buckets available  
Mechanical Quick Coupler (B95C, B95C LR)  
Aux hydraulics

#### HYDRAULICS

Backhoe hammer circuit  
Mid-mount hand tool circuit  
Extra function backhoe valve with control pedal (less HED)  
\*Glide Ride control system

#### TOTAL VEHICLE

Fire extinguisher  
Special order paint colors  
\*External rearview mirrors  
Front fenders  
\*Operator cooling fan  
\*4wd driveshaft guard kit  
Tool box (lockable)

#### LOADER ATTACHMENTS

Sweeper brooms  
4x1 bucket  
Auger  
Claw  
Forks  
Scrap grapple

#### BACKHOE ATTACHMENTS

Hydraulic breaker  
Hydraulic auger  
Hydraulic thumb  
Additional buckets

#### TIRES

Please see your dealer to discuss the other tire options available.

\*Factory or Dealer installed option

# B110C

## BASE & OPTIONAL EQUIPMENT

### BASE EQUIPMENT

#### ENGINE

Dry dual-element air cleaner  
Fuel filter w/ water separator  
10 micron paper filter  
Glow Plugs  
FPT F5BFL413B Diesel  
Diesel Oxidation Catalyst with SCR  
Full flow engine oil filter  
Electronic throttles – foot and rotary hand  
Self-adjusting belt  
High Pressure Common Rail computer

#### TRANSMISSION

Power shuttle fully synchronized gearbox,  
4 forward/4 reverse speeds, and  
power-reversing torque converter  
Two position electric disconnect on  
loader control and gearshift

#### OUTBOARD REAR AXLE/BRAKES

Planetary final drives  
Button activated differential lock  
Electric differential lock on powershift  
Multi-plate, hydraulic, self-adjusting,  
self-equalizing outboard wet disc brakes  
Independent SAHR parking/emergency  
brake

#### FRONT AXLE

74" tread width  
Hydrostatic power steering with  
priority valve  
Integrated steering cylinder  
2WD axle: cast iron  
FWD axle: cast iron  
FWD electrical engagement with  
indicator light

#### ELECTRICAL

12-volt system  
160-amp high-capacity  
Dual wet batteries  
Sealed fuseblock compartment  
Water resistant main fuseblock

#### LIGHTING

8 halogen worklights  
Stop and turn signals  
Four-way safety flashers

#### BACKHOE

Includes: Curved boom, Center pivot  
swing post, Boom cylinder and Dipper  
cylinder

#### OPERATOR'S STATION (ROPS)

Dual side entry flat deck  
Interior rearview mirror  
Built-in beverage holder  
Key start switch with electric shut-off  
2-position horn control  
Electric analog instrumentation  
Tachometer/hourmeter  
Fuel gauge  
DEF gauge

Tilt steering wheel (w/ Powershift)  
Auxiliary 12-volt output/cigarette lighter  
Pre-wired for emergency beacon  
Pre-wired for road headlights  
Vinyl suspension seat  
SE3-inch retractable seatbelt

#### OPERATOR'S STATION (CAB)

Dual side entry flat deck  
Interior rearview mirror  
Built-in beverage holder  
Coat hook  
Pre-wired for radio  
Key start switch with electric shut-off  
Headliner  
2-position horn control  
Molded floor mat  
Electric instrumentation  
Tachometer/hourmeter  
Fuel gauge  
DEF gauge  
Interior dome light  
Tilt steering wheel (w/ Powershift)  
Auxiliary 12-volt output/cigarette lighter  
Pre-wired for emergency beacon  
Pre-wired for road headlights  
Adjustable side window openings  
One-piece rear window  
Adjustable heater/blower fan  
Adjustable front sun-screen shade  
Cloth suspension seat  
2-inch retractable seatbelt

#### LOADER

Straight loader arm design  
4-Bar bucket linkage  
Bucket level indicator  
Return-to-dig feature  
Dual lift and bucket cylinders  
Hydromechanical self-leveling  
Single lever control  
1.3 yd<sup>3</sup> heavy duty bucket

#### HYDRAULICS

O-ring Face seal connectors  
"PD" type diagnostic port connectors  
Open center coaxial drive hydraulic pump  
7 micron spin-on filter element  
Relief valve protection  
Mechanical, Gear Pump - 151 L/min  
(40 gpm)  
Pilot, Axial Piston Pump - 6 to 156 L/min  
(1.6 to 41.2 gpm)

#### SAFETY AND SECURITY

4-Post ROPS/FOPS  
Lockable compartments for: Engine,  
Hydraulic System, Battery  
Lockable fuel & DEF cap  
Battery disconnect switch  
2" Retractable seat belt  
Horn  
Backup alarm

### OPTIONAL EQUIPMENT

#### ENGINE

Grid heater starting aid  
\*110-volt engine block heater  
\*Centrifugal dust bowl pre-cleaner  
(B110B)

#### TRANSMISSION

Powershift, 4 forward/2 reverse speeds,  
and power-reversing torque converter  
Single lever F-N-R control with safety  
detent

#### ELECTRICAL

Single battery

#### BACKHOE

2-lever pilot controls with pattern  
changer  
\*Mechanical backhoe bucket quick  
coupler  
4-lever backhoe controls  
2-lever ISO excavator pattern backhoe  
controls  
HED extendible dipperstick  
Multiple bucket options from factory  
Heavy-duty and extra heavy-duty backhoe  
buckets

#### OPERATOR'S STATION (ROPS)

Electric ON/OFF control of hydraulic  
hand tool function  
Foot-activated switch control of backhoe  
hammer

#### OPERATOR'S STATION (CAB)

Air conditioning system  
Super deluxe Air Ride seat  
Vinyl suspension seat  
Speedometer  
Tilt steering wheel

#### LOADER

Multiple buckets available  
Aux hydraulics

#### HYDRAULICS

Backhoe hammer circuit  
Mid-mount hand tool circuit  
Extra function backhoe valve with control  
pedal (less HED)  
\*Glide Ride control system

#### TOTAL VEHICLE

Fire extinguisher  
Special order paint colors  
\*External rearview mirrors  
Front fenders  
\*Operator cooling fan  
\*4wd driveshaft guard kit  
Tool Box (lockable)

#### LOADER ATTACHMENTS

Sweeper brooms  
4x1 bucket  
Auger  
Claw  
Forks  
Scrap grapple

#### BACKHOE ATTACHMENTS

Hydraulic breaker  
Hydraulic auger  
Hydraulic thumb  
Additional buckets

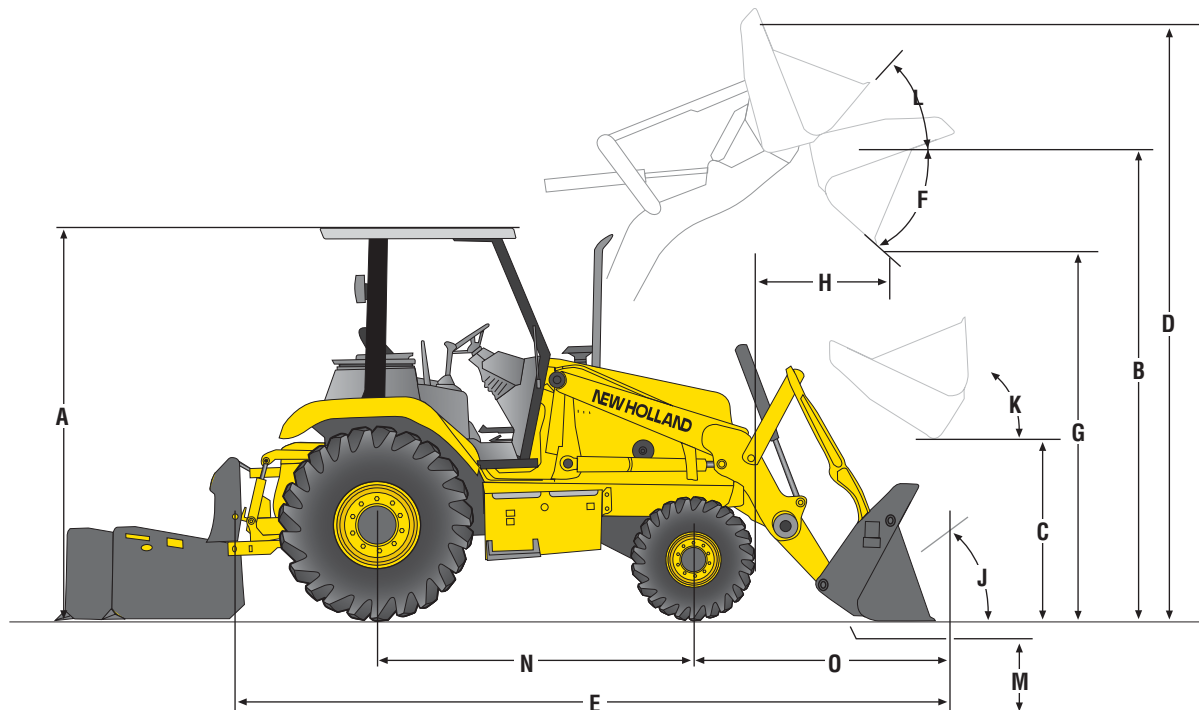
#### TIRES

Please see your dealer to discuss the  
other tire options available.

\*Factory or Dealer installed option



# U80C SPECIFICATIONS



## LOADER DIMENSIONS

		Long Lip Bucket 19.5 L x 24 Tires	4 IN 1® Bucket 17.5 L x 24 Tires			Long Lip Bucket	4 IN 1® Bucket
A.	Height to:			H.	Dump reach @ full height, 45° dump:		
	Top of canopy, ft/in (m)	8' 12" (2.73)	8' 9" (2.67)		Bucket, ft/in (m)	2' 2" (0.66)	2' 2" (0.66)
	Height to top of canopy – Low profile ROPS, ft/in (m)	8' 9" (2.65)	8' 6" (2.59)		Clam open, in (m)	NA	11.8 (0.29)
B.	Top of cab, ft/in (m)	8' 12" (2.74)	8' 10" (2.68)	J.	Bucket rollback:		
	Bucket hinge pin fully raised, ft/in (m)	11' 2" (3.41)	11' 2" (3.41)		@ Groundline	40°	40°
C.	Bucket hinge pin @ SAE carry, ft/in (m)	1' 1" (0.33)	1' 3" (0.37)	K.	@ SAE carry	45°	45°
					@ Full height	Adjustable	Adjustable
D.	Overall operating height – fully raised, ft/in (m)	13' 8" (4.17)	14' 3" (4.35)	L.	Digging depth below grade:		
					Bucket flat, in (m)	7.8 (0.19)	7.1 (0.18)
E.	Overall length w/ 3-point hitch, ft/in (m)	16' 11" (5.15)	16' 8" (5.09)	M.	Clam open (dozing), in (m)	NA	4.4 (0.11)
	Width over tires:				Ground clearance at front axle, in (m)	10.9 (0.28)	10.9 (0.28)
	11 L x 16, ft/in (m)	6' 8" (2.02)	6' 8" (2.02)		Wheelbase 4WD, ft/in (m)	7' 1" (2.15)	7' 1" (2.15)
	12 L x 16.5, ft/in (m)	6' 10" (2.06)	6' 10" (2.06)		Wheelbase 2WD, ft/in (m)	7' 0" (2.14)	7' 0" (2.14)
	19.5 L x 24, ft/in (m)	6' 10" (2.07)	6' 10" (2.07)		Reach from front axle centerline – bucket on ground, ft/in (m)	6' 3" (1.89)	5' 12" (1.83)
F.	17.5 L x 24, ft/in (m)	6' 10" (2.07)	6' 10" (2.07)	O.	Maximum clam opening, ft/in (m)	NA	3' 3" (0.97)
	Dump angle @ full height	46°	45°		Moldboard height, ft/in (m)	NA	3' 1" (0.93)
G.	Dump clearance @ full height, 45° dump:			N.	Lift capacity to full height, lb (kg)	6,503 (2950)	6,537 (2965)
	Bucket, ft/in (m)	9' 8" (2.93)	8' 11" (2.71)		Breakout force:		
	Clam open, ft/in (m)	NA	8' 8" (2.63)		Lift cylinders, lb (N)	9,271 (41 239)	8,766 (38 993)
					Dump cylinders, lb (N)	9,607 (42 734)	10,325 (45 928)

NOTE: Loader dimensions taken with 4WD, 19.5 L x 24 rear tires and 82 in (2.08 m) general purpose bucket except as noted.

# U80C SPECIFICATIONS

## LOADER

Single-lever 5 function control w/ self-leveling and Return-to-Dig	In-line, reverse linkage
Positive hold float	Dual parallel dump cylinders
Return-to-dig	Clutch disconnect button on loader control and shift levers
Automatic self-leveling	Bucket position indicator

Loader Bucket Sizes	Width, in (m)	Weight, lbs (kg)	Struck, yd³ (m³)	Heaped, yd³ (m³)
Long Life Bucket	82 (2.08)	686 (311)	.87 (.67)	1.03 (0.79)
4-in-1 Bucket	82 (2.08)	1,451 (658)	.85 (.65)	1.04 (0.80)

## ENGINE

<b>Turbo</b>	
Model	F5HFL463D*F005
Type	4-stroke, turbocharged
Cylinders	4
Bore x stroke, in (mm)	3.9 x 4.33 (99 x 110)
Displacement, in³ (L)	207 (3.4)
Fuel injection	Direct HPCR (High Pressure Common Rail)
Engine speeds, (rpm)	
Rated speed, full load	2,200
Low idle	900 - 1,000
High idle, no load	2,330 - 2,430
Horsepower (SAE J1349)	
Gross @ 2,200 rpm, (kW)	74 (55)
Net @ 2,200 rpm, (kW)	68.4 (51)
Maximum torque @ RPM	
Gross, lb-ft (Nm)	233 (316)
Net, lb-ft (Nm)	219 (298)
Torque rise at rated speed	35%

## POWERTRAIN

Transmission type	4 speed synchromesh with hydraulically actuated clutches and electric F/R shuttle control, clutch disconnect buttons on the transmission shifter and loader control lever			
Torque converter ratio (standard)	3:1			
Torque converter (PTO ready)	3.2:1			
Differential-lock	On the go push-button activation			
Service brakes	Individually applied hydraulically actuated, maintenance-free, self adjusting outboard mounted wet disc			
Parking brakes	Trans Mounted SAHR (Spring Applied Hydraulic Release)			
Travel speeds, mph (km/h)	1st	2nd	3rd	4th
Forward/Reverse (standard)	3.8 (6.1)	6.1 (9.8)	12.8 (20.6)	24.0 (38.6)
Forward/Reverse (PTO Ready)	3.5 (5.6)	5.5 (8.9)	11.8 (19)	21.3 (34.3)

Note: Travel speeds at 2,293 engine rpm with 19.5 L x 24 rear tires.

## ELECTRICAL

Voltage	12 Volts, negative ground
Alternator, amps	120
Battery	850 CCA
Optional batteries	850 CCA
Power plugs, amps	30 total

## HYDRAULICS

Pump	Gear-type, transmission mounted, direct drive to engine crankshaft
Loader flow @ rated engine rpm, gpm @ psi (L/min @ bar)	28.5 @ 3,000 (108 @ 207)
Loader control valve	2 or 3-spool with single lever control for lift, dump and tilt and auxiliary hydraulics, positive hold float and return-to-dig
3-pt hitch flow @ rated engine rpm, gpm @ psi (L/min @ bar)	3 to 8 @ 2,000 (0 to 30 @ 137)
3-pt hitch control valve	Sectional 4-spool, open-center parallel circuits with variable control for lift, pitch, tilt, and 2 auxiliary remotes
Loader auxiliary hydraulics, gpm (L/min)	12 to 28.5 (45.4 to 108)
Main relief pressure, psi @ gpm (bar @ L/min)	3,050 + 50 - 50 @ 28.5 (210 + 3 - 3 @ 108)
Filtration	7 micron full flow replaceable cartridge on return line, condition indicator light for filter
Oil cooler	Heavy-duty

## TURNING DIAMETER

2WD, ft/in (m)	Brakes on	12' 2" (3.70)
	Brakes off	12' 10" (3.91)
4WD-engaged, ft/in (m)	Brakes on	11' 7" (3.52)
	Brakes off	13' 9" (4.18)
4WD-disengaged, ft/in (m)	Brakes on	12' 3" (3.72)
	Brakes off	12' 11" (3.92)

Note: Turning diameter dimensions are curb to curb w/82" (2.08 m) general purpose bucket.

## TIRES

Front	2WD-11 L x 16.1, 10-ply rating 4WD-12 L x 16.5, 8-ply rating
Rear	2/4 WD-17.5 L x 24, 10-ply rating STD 2/4 WD-19.5 L x 24, 10-ply rating OPT



# U80C SPECIFICATIONS

## SERVICE CAPACITIES

Fuel tank, gal (L)	30 (114)
Hydraulic system, gal (L)	
Total	19 (72)
Reservoir w/filter	15.3 (58)
Reservoir w/o filter	14.8 (56)
Transmission, gal (L)	
2WD Total system	4.5 (17)
4WD Total system	5.25 (20)
4WD Front axle, qt (L)	
Differential	5.8 (5.5)
Planetaries (each)	0.75 (0.7)
Rear Axle, qt (L)	
Differential	14.4 (13.6)
Planetaries (each)	1.6 (1.5)
Engine oil w/filter, qt (L)	8.5 (8)
Cooling system, qt (L)	17 (16.1)

## 3 POINT HITCH

Category I & II 3-point hitch	
Hydraulic lift, pitch, tilt and (2) auxiliary remote	
Variable flow from 0 to 8 gpm (0 to 30 L/min)	
485 lbs (220 kg) counterweight included with hitch	
<b>3-point Hitch Lift Capacity</b>	
Hitch position, in (mm)	lbs (N)
Lowest point	2,500 (11 121)
1/5	3,247 (14 444)
2/5	3,400 (15 125)
3/5	3,501 (15 574)
4/5	3,297 (14 666)
Highest point	2,984 (13 274)

Note: Hitch position is vertical distance of lowest hitch point above ground.

## WEIGHT

Base Unit* with added options	10,916 lbs
Cab	+646 lbs
4WD	+218 lbs
3,000 lbs (counterweight)	+3,000 lbs
500 lbs Rear (counterweight)	+500 lbs
440 lbs Front (counterweight)	+440 lbs
Box Scraper	+1,592 lbs
4-in-I Bucket	+717 lbs

\*Unit configuration: 82" standard bucket, 2WD, 19.5L x 24 rear tires, ROPS cab, Suspension seat, dual batteries, no operator.

# BASE & OPTIONAL EQUIPMENT

## BASE EQUIPMENT

### ENGINE

F5HFL463D\*F005  
Turbocharged  
Automatic fan belt tensioner  
Integral engine oil cooling  
Fuel filter with water trap  
Dual element air cleaner  
120 amp alternator  
850 CCA 12-volt battery  
Heavy duty radiator  
Particulate Matter Catalyst - Spark arresting

### POWERTRAIN

4WD – 2WD  
4F/4R Power shuttle synchromesh transmission  
Torque converter  
Transmission de-clutch  
Electro-hydraulic differential lock  
Hydrostatic steering  
Outboard wet disc brakes

### HYDRAULICS

2 spool loader control valve  
4 spool 3-point hitch control valve  
Heavy-duty oil cooler  
Flip forward hood  
Lights:  
2 halogen headlights  
2 rear flood  
2 rear tail and stop  
2 front flashers/turn  
2 rear flashers/turn

### OPERATOR ENVIRONMENT

ROPS/FOPS canopy  
Key start  
Hydrostatic steering  
Standard seat w/15° right, 30° right  
Foot throttles\*  
Loader control lever w/push button activation of differential lock and transmission de-clutch

Two Accessory power plugs (30 amp)  
Anti-vandalism covers  
Beverage holder  
Coat hook w/tether strap  
Interior rear-view mirror  
2" (51 mm) retractable seat belt  
Storage box

### INSTRUMENTS

Gauges — back lit  
Engine water temperature  
Converter oil temperature  
Fuel  
Tachometer/hourmeter  
Voltmeter  
Warning lights  
Air cleaner restriction  
Alternator  
Engine oil pressure  
Hydraulic oil filter bypass  
Parking brake engagement  
Rear axle fluid temperature sensing system  
Low fuel  
A/C high pressure  
Cold start  
Water in fuel  
Master warning  
Master stop  
Audible alarms  
Coolant temperature  
Engine oil pressure  
Parking brake engagement  
Shuttle engagement  
Backup alarm  
Regeneration  
Converter oil temp  
Turn signal indicators  
Horn

## OPTIONAL EQUIPMENT

### OPERATOR STATION

Cab w/ Heat  
Cab w/ Heat and Air Conditioning  
Vinyl Suspension Seat w/ Armrest (Std. on 4 wheel drive)  
Hand Throttle

### ENGINE

Dual Batteries

### HYDRAULICS

Laser-Ready Valve Kit (includes valve, plumbing, and electrical harness)  
5 Spool, Dual Tilt Cylinders w/ Return to Position, Load Holding Valve, and 3 Point Hitch Control  
3 Point Hitch w/ PTO Hydraulic Pump (required when installing or using an hydraulic PTO)  
Glide Ride

### LOADER

Loader Auxiliary Hydraulics and Controls (3 spool loader valve)  
Pin-On Multipurpose (4X1)  
82" Loader Bucket w/ Cutting Edge (includes auxiliary hydraulics)  
Hydraulic Quick Coupler (From FFC, includes auxiliary hydraulics, 3 spool valve)

### OTHER

Drawbar  
Tool Box  
84" Box Scraper  
Rear Counterweight (3,000 lbs)  
Additional Stackable Rear Counterweights (475 lbs)  
19.5 x 24 10PR Rear Tires  
Wheel weights - good  
Wide Seat Belt, 3" (75 mm)

## C SERIES LOADER BACKHOES AND TRACTOR LOADERS

### B95C

Gross horsepower  
97 hp (72 kW)

Base unit weight  
17,560 lbs (7965 kg)

Backhoe bucket capacity  
7.5 cu ft (.21 m<sup>3</sup>)

Loader SAE heaped capacity  
1.1 cu yd (.88 m<sup>3</sup>)

### B95C TC

Gross horsepower  
97 hp (72 kW)

Base unit weight  
17,730 lbs (8042 kg)

Backhoe bucket capacity  
7.5 cu ft (.21 m<sup>3</sup>)

Loader SAE heaped capacity  
1.3 cu yd (1.0 m<sup>3</sup>)

### B95C LR

Gross horsepower  
97 hp (72 kW)

Base unit weight  
18,525 lbs (8402 kg)

Backhoe bucket capacity  
8.5 cu ft (.24 m<sup>3</sup>)

Loader SAE heaped capacity  
1.1 cu yd (.88 m<sup>3</sup>)

### B110C

Gross horsepower  
110 hp (82 kW)

Base unit weight  
18,525 lbs (8402 kg)

Backhoe bucket capacity  
8.5 cu ft (.24 m<sup>3</sup>)

Loader SAE heaped capacity  
1.3 cu yd (1.0 m<sup>3</sup>)

### U80C

Gross horsepower  
74 hp (55 kW)

Base unit weight  
10,916 lbs (4951 kg)

Loader SAE heaped capacity  
1.03 cu yd (0.79 m<sup>3</sup>) Long Life Bucket  
1.04 cu yd (0.80 m<sup>3</sup>) 4 in 1 Bucket

## World Class Products Demand World Class Dealers

The purchase of a New Holland machine is just the beginning of our relationship together. Consider your experienced New Holland Construction equipment dealer as your local partner in productivity. Assistance in selecting the right model for your operation and developing an affordable leasing or financing plan through New Holland's financing division, CNH Industrial Capital, are just a few advantages your local dealer can provide.

Your New Holland dealer's full service capabilities bring you responsive support with genuine New Holland parts and all makes coverage. More importantly, we are there wherever and whenever you need us with our fully equipped service vehicles. From customized maintenance programs to professional operator and technical training, our factory-trained service and parts experts are there to assist you with any of your equipment support needs.

Your business deserves nothing less than world class product, supported by a world class business partner. That's your New Holland Construction Equipment dealer — your partner in productivity.



New Holland Construction  
500 Diller Ave.  
New Holland, PA 17557

[www.newholland.com](http://www.newholland.com)

Design, materials and/or specifications are subject to change without notice and without liability therefor. Specifications are applicable to units sold in Canada, the United States, its territories and possessions, and may vary outside these areas.

© 2016 CNH Industrial America LLC. All rights reserved. New Holland is a trademark in the United States and many other countries, owned by or licensed to CNH Industrial N.V., its subsidiaries or affiliates. Any trademarks referred to herein, in association with goods and/or services of companies other than CNH America LLC, are the property of those respective companies.



Safety begins with a thorough understanding of the equipment. Always make sure you and your operators read the Operator's Manual before using the equipment. Pay close attention to all safety and operating decals and never operate machinery without all shields, protective devices and structures in place. This is a one-person machine. Never allow riders in the cab, outside the machine, or in/on any bucket or attachment.

NHC36145340 • 0116XX • OTP • PRINTED IN U.S.A.

Printed on recycled paper