



Model 835C-855C

Proven Solutions



LANDOLL 835C/855C
DETACHABLE GOOSENECK





Investing In The Future...

The Landoll Model 800 Series...

Designed to Exceed Your Needs

Proven Solutions in equipment transport is evident as Landoll introduces the all new **800 Construction Series Heavy Haul Detachable Lowboy Trailers**. For over 45 years, the quality of Landoll Trailers has met and exceeded our customer expectations. The innovative four beam frame and gooseneck give the operator versatility required to safely load and legally transport today's heavy, wide and tall construction equipment such as front end loaders, dozers and excavators.

The Landoll 800 Series' versatility originates in its primary standard features. The new innovative 4-beam frame features a flat deck with a loaded height of 17³/₄" (835C) or 19 ¹/₂" (855C). The 835C is a 2 or 3-axle, 70,000 lb. capacity; the 855C is a 3 or 4-axle, 110,000 lb. capacity. Both have a 12' concentrated deck rating.

Standard features do make the difference. The gooseneck is a Landoll patent that gives the operator the control at his fingertips. Two kingpin settings, with swing clearance of 108" and 90", allow three or four axle tractors to maximize their weight distribution. The **7-position ride height** gives needed ground clearance and lowers the deck height to carry extremely high loads. No other gooseneck offers such flexibility as the Landoll 800C Series.

There are 24 "D" ring tiedowns located on the lower deck, bolster ends and the rear trunnion. The 800C is equipped with a 6' recessed bucket trough in the lower deck, which transitions to an open trunnion slope that connects to the full length recessed boom trough. It's all standard.



- Full Length Recessed Boom Trough
- Dropped Wheel Bolster
- No Front Crossmember in Slope



Model 800 Series Dimensions	835C-48CA 2 Axle	835C-53 2 Axle	855C-48CA 3 Axle	855C-53 3 Axle
Overall Length	47'11"	52'11"	47'11"	52'7"
Swing Clearance	90"	90"	90"	108"/90"
Kingpin/Center Rear Axle	44'3"	49'3"	44'3"	49'/47'6"
Axle Spacing/# of Axles	50"/2	50"/2	50"/3	54"/3
Lower Deck Load Area	26'7"	31'7"	22'1"	24'7"
Rear Deck Length	7'2"	7'2"	11'4"	12'
Loaded Deck Height	17 ³ / ₄ "	17 ³ / ₄ "	19 ¹ / ₂ "	19 ¹ / ₂ "
Third Axle/Fourth Axle	Opt. 3rd	Opt. 3rd	Opt. 4th	Opt. 4th

Canadian RTAC Legal Tire Width

Quick and Safe Operation

- Patented Gooseneck Lock/Support System
- Driver Side Hydraulic Controls
- Single Hydraulic Lever for Full Operation
- Gooseneck Lock Conveniently Located at Controls
- Hydraulic Valve Ready for Optional Hydraulic Flip Axle



- Easily Adjust Ground Clearance from 6.5" to 18"
- Transport at 7 Height Positions while the Neck Remains Locked
- Optional Chain/Binder Rack and Storage Box between Arms



- Super Strong Gooseneck Lock/Support Arm System
- Heavy Duty Casting Load Carriers
- Self Aligning Guidance System
- Single Hydraulic Operation

Landoll 835C/855C

Proven Solutions...

Multipurpose... Construction, Rental, Heavy Haul, Transport...

LANDOLL, a brand name that is world famous for exceptional quality and superior value, presents the Model 835C and Model 855C. The 800 Construction Series is the complete package. Maximum lower deck length allows you to position your loads and scale legally. For heavy loads, the base trailer comes standard with flip axle brackets and air/electrical couplers. To move a permit load with ease, an optional flip axle can be added.

The 800C Series is work ready with a flattened front approach, **apitong wood** in track area, a recessed storage compartment and swing-out overwidth extensions. The front, double outrigger is for added strength at the break over. There are traction bars on the approach and on the front half bolster for added traction. All standard equipment.

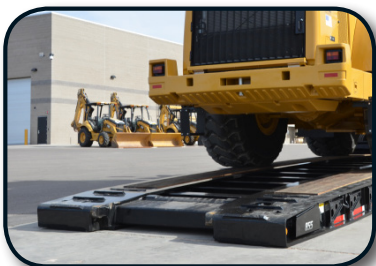
Safety can never be overlooked. In one operation, a single hydraulic control lever lowers the deck, detaches and activates the patented gooseneck lock/support arm. To detach, activate the horizontal lift cylinders that lower the deck, and continue to tilt the lock/support forward until it comes in contact with the truck frame. Just drive forward, all within a matter of minutes. You deserve the ease and simplicity of detaching and loading directly onto the lower deck, which is only 13" off the ground. You will never have to drive up and over the trunnion again.



- 800 Series Is Loaded with Standard Features
 - 12" Swing Out Extensions – Self Locking
 - ABS 4S2M w/ Maxi Brakes on all Axles
 - Mechanical Ride Height and Suspension Dump Controls
 - Centralized Grease System
 - Zinc Rich Powder Primer - Powder Paint



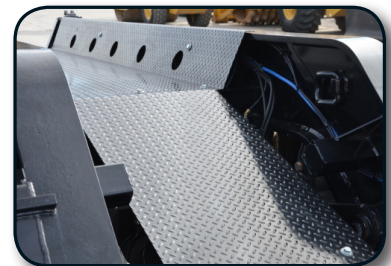
- Dropped Wheel Bolsters and Front Bolster with Traction Bars



- Low Profile Approach Plate to Accommodate Rollers or Other Tricycle Track Machines - No Ramps Required
- Traction Bars on Approach
- 8 Key-hole Tie Downs



- Flip Brackets, Air/Elect. Couplers
- "V" Type Rear Bumper
- High Visibility LED Lights
- Electrical Outlet for Rotating Lights
- Optional Rear Strobe LED Lighting



- Open Slope Transition
- Full Length Recessed Boom Trough
- Optional Boom Trough Cover

S=Standard O=Optional

Manufactured by Landoll Corporation, *the centralized grease system* provides remote grease zerks to each individual greaseable point on the trailer axles including the slack adjusters and camshaft bearings, which both require regular grease for optimum performance. Maintenance time and costs are reduced significantly.



Specifications subject to change without notice. Pictures may show optional equipment.

Remember: Quality is Always a Bargain!



Intertek
I 835C-855C/1112