



# **MODEL 835 PAVER SPECIAL TRAILER**



Standard Front Ramps  
in Transport Position



Standard Easy Fold Ramps  
in Load Position



Optional Lights Shown



**Proven Solutions for Your Hauling Needs!**  
**1-800-428-5655 | [www.landoll.com/trailers](http://www.landoll.com/trailers)**



# Standard & Optional Equipment / Features

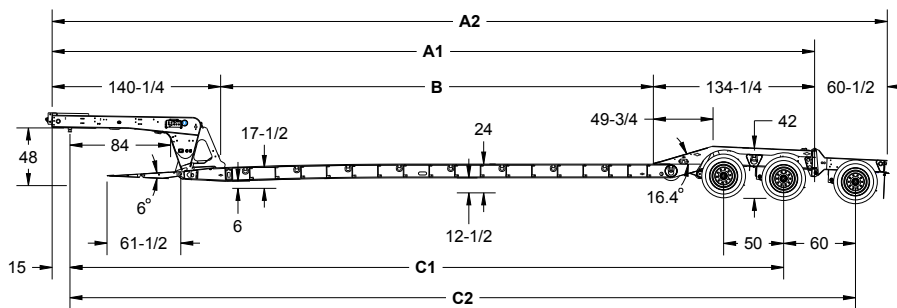
## Model 835-PS Detachable Gooseneck Trailer

S=Standard O=Optional

MODEL 835-PS	35 TON	70,000 lbs.
<b>MAIN FRAME</b>		
- Fabricated 11 $\frac{3}{8}$ " Beam, 100,000 PSI		S
<b>KINGPIN SETTING</b>		
- 15"		S
<b>CROSSMEMBERS</b>		
- 6" High Tensile I-Beams on 21- $\frac{3}{8}$ " Centers		S
<b>GOOSENECK, DECK AND ACCESSORIES</b>		
- 3rd Axle Ready		S
- 12" Swing-Out Outriggers		S
- Rear Trunnion Wheel Areas Covered		S
- HD Sloped Front Approach		S
- Open Boom Trough with "V" Type Bumper		S
- Three Pair Flag Holders		S
- Centralized Grease System - All Axles		S
- Front Ramps Track Area (61" Bi-Fold, 25 lb. Lift Spring Assist, 6° Load Angle)		S
<b>DECK AND FEATURES</b>		
- 102" Wide		S
- 1 $\frac{1}{2}$ " Nominal Apitong Fully Covered Lower Deck		S
<b>CYLINDERS</b>		
- Main Gooseneck - Horizontally Mounted		S
<b>SWING CLEARANCE</b>		
- 84"		S
<b>LOADED GROUND CLEARANCE</b>		
- 6.5"		S
<b>LOADED MAIN DECK HEIGHT</b>		
- 18" Front to 24" Rear		S
<b>TIE DOWNS / CHAIN GOTCHAS</b>		
- (22) Total, All Angled "D" Rings, 9 Each Side Lower Deck, 1 on the End of Middle Bolster, 2 at Rear of Trunnion (53' Trailer)		S

MODEL 835-PS	35 TON	70,000 lbs.
<b>STORAGE AREA</b>		
- (1) Right Side Transition from Lower Deck to Upper Deck (28" W x 16" L x 5" D)		S
<b>SUSPENSION / AXLES</b>		
- Neway Air Ride 25,000 lb. Capacity with Mechanical Ride Height Control Valve		S
- (2) 25,000 lb. Dual Tire, Oil Bath Bearings		S
- 50" Spacing		S
- Auto Slack Adjusters - All Axles		S
<b>BRAKES</b>		
- 16.5x7 Full Air with Spring Brakes ABS 4S2M		S
<b>TIRES / RIMS</b>		
- 255/70R 22.5 LRH		S
- 22.5 x 8.25		S
- Hub Pilot / Steel Outboard Brake Drums		S
<b>HYDRAULIC HOOK UP</b>		
- Hydraulic Quick Couplers / 2,500 PSI - 15 GPM		S
<b>LIGHTS</b>		
- Grote "SuperNova" LED 10-Year Warranty		S
- Grote "Ultra-Blue Seal" Wiring Harness 7-Year Warranty		S
<b>FINISH / COLOR</b>		
- Steel Grit Shot Blast / 400° Bake		S
- Zinc Rich Powder Primer		S
- TGIC Polyester Powder Coat		S
White, Black, Yellow, Blue, Red, Green		
<b>WEIGHT (BASE)</b>		
53' - 835-PS - 19,820 lbs. +/- 3%		S
ESTIMATED WEIGHTS		

Pictures and content may include optional equipment and/or standard features that may not be standard on all models. Specification and design subject to change without notice. Weights and measurements are best estimates and should not be treated as actual. There are other features and optional equipment available. If you have any questions, consult the factory.



MODEL	A1		A2		B		C1		C2	
	FEET IN.	METERS	FEET IN.	METERS	FEET IN.	METERS	FEET IN.	METERS	FEET IN.	METERS
835PAV-48	47'-11"	14.61	52' 11-1/2"	16.14	25' 0-1/2"	7.63	44' 6-1/4"	13.57	49' 6-1/4"	15.09
835PAV-53	52'-11"	16.13	57' 11-1/2"	17.67	30' 0-1/2"	9.16	49' 6-1/4"	15.09	54' 6-1/4"	16.62

**Optional:**  
Center Ramp in Transport Position



**Call 1-800-428-5655**

**Proven Solutions for Your Hauling Needs!**

**[www.landoll.com/trailers](http://www.landoll.com/trailers)**

1900 North Street | Marysville, KS 66508 | Ph: 785-562-5381 | Fax: 888-293-6779

**Remember: Quality is Always a Bargain!**

