

# H&S

## TRI-FLEX

# TRIPLE HEAD MERGERS





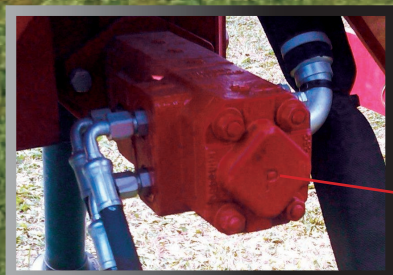
## Control Box



Rotary Steering Sensor



The self contained hydraulic system has an 75 gallon reservoir.



Either 1-3/8" or 1-3/4" 1000 rpm PTO runs the 3 - Low Volume 7 GPM Pumps w/ High Torque Motors pumps that drive the 3 heads.



3-point hitch is CAT 2, CAT3/N, or CAT3

The 3 heads on both 30' and 35' Tri-Flex Merger are divided into equal lengths.





# GER FEATURES

able in  
& 35'  
odels

An Auto  
Lube System  
greases 80%  
of the Tri-Flex  
Merger.



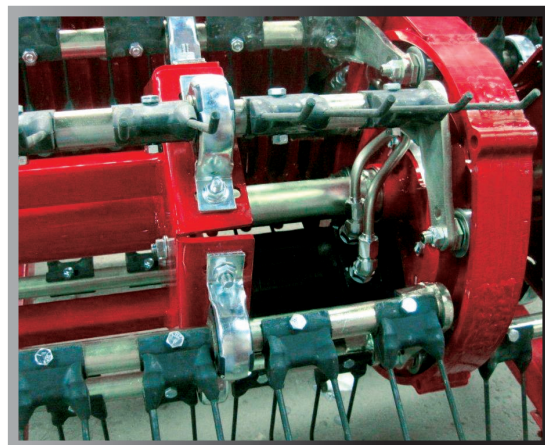
The Tri-Flex features a heavy duty steerable axle and 16.5 x 16.1 tires. When the Tri-Flex Merger is folded into transport position, the steering system is locked out for transport.

All heads are approximately 31" in diameter with an 8" drop to the cross conveyor.



Because of the center cam and center drive (patent pending) system that runs at 80 rpm's, there is less gap between the heads.

Hydraulic motors on the ends of each fluted roll, drive the 42" wide rubber w/nylon cord cross conveyor belt. A guide groove keeps the belt aligned.

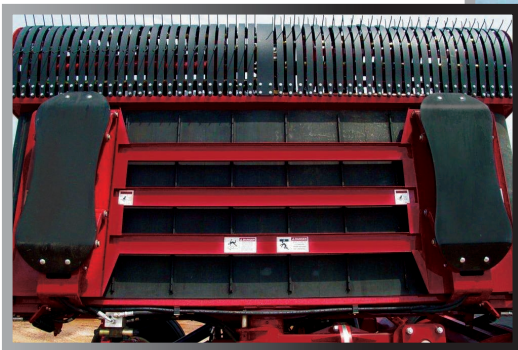


The 6 tine bars have graphite impregnated nylon split bearings and feature U-shaped rubber teeth.



# TRI-FLEX Specifications

	TFM2130	TFM2135
WORKING WIDTH	30'3"	34'9"
WORKING HEIGHT	7'9"	7'9"
TRANSPORT WIDTH	11'5"	11'5"
TRANSPORT LENGTH	21'8"	21'8"
TRANSPORT HEIGHT	10'8"	10'8"
PICK-UP HEADS	3 - 10'1"	3 - 11'7"
PICK-UP STRIPPERS	Poly	Poly
PICK-UP TEETH	Rubber Mounted	Rubber Mounted
CONVEYOR BELT WIDTH	42"	42"
DRIVE SYSTEM	3 - Low Volume 7 GPM Pumps w/High Torque Motors	3 - Low Volume 7 GPM Pumps w/High Torque Motors
PTO - 1000 RPM	1-3/8" or 1-3/4"	1-3/8" or 1-3/4"
OIL RESERVOIR CAPACITY	75 Gallon	75 Gallon
TIRE SIZE	16.5 x 16.1	16.5 x 16.1
WEIGHT	15,800#	16,200#
TRACTOR SIZE	150 HP Minimum	150 HP Minimum
HYDRAULIC REQUIREMENTS	2 Sets of Remotes (Requires Closed Center Hydraulic System) 2900 PSI 30 GPM	2 Sets of Remotes (Requires Closed Center Hydraulic System) 2900 PSI 30 GPM
3-POINT HITCH	Cat II, III, or III-N	Cat II, III, or III-N



The elliptical shaped skid shoes are hydraulically adjusted from the electric control box.



Warranty: See operators manual for warranty details and limitations. H&S reserves the right to change its products or the description at any time without notice or obligation.

*Buy the BEST*  
**BUY**

**H&S**



  
Manufactured in U.S.A.



NEED A QR CODE READER?  
DOWNLOAD THE FREE APP  
TO YOUR SMARTPHONE!

Models and specifications  
are subject to change  
without prior notice.

12/12 2.5M

## H&S MANUFACTURING

2608 S. Hume Avenue  
P.O. Box 768 • Telephone (715) 387-3414  
FAX (715) 384-5463 • Website [www.hsmfgco.com](http://www.hsmfgco.com)  
**MARSHFIELD, WI 54449**



H&S WAREHOUSE 10145 Lakeshore Road  
P.O. Box 1260 • Telephone (716) 736-7595  
FAX (716) 736-7596 • Website [www.hsmfgco.com](http://www.hsmfgco.com)  
**RIPLEY, NY 14775**