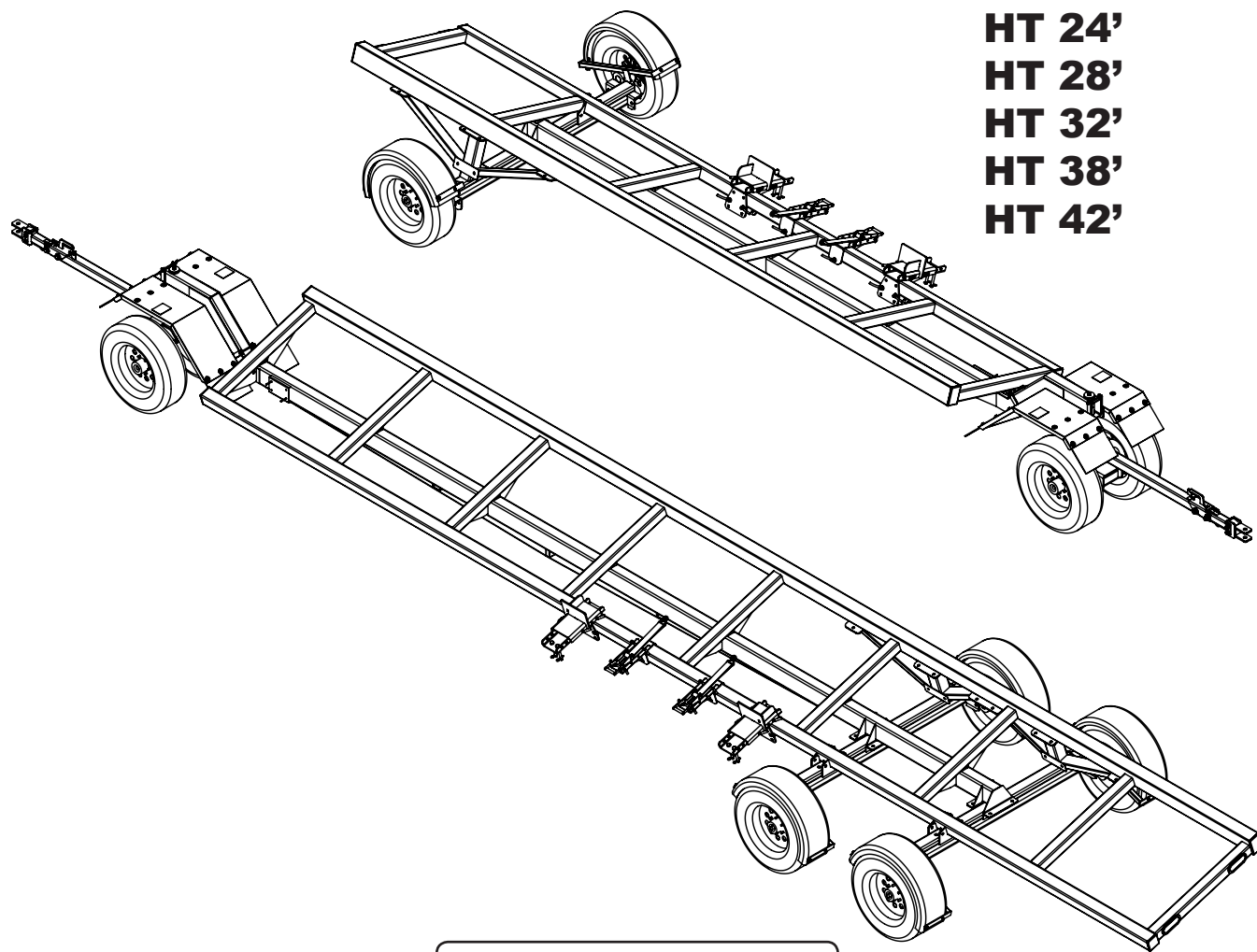




Combine Header Transport

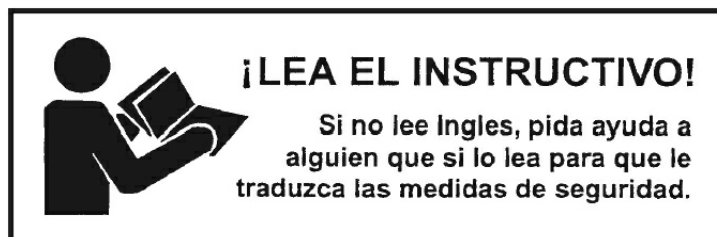
HT 20'
HT 24'
HT 28'
HT 32'
HT 38'
HT 42'



Instruction Manual
8H000004
Revision AK 08/08/2016

TABLE OF CONTENTS

Introduction.....	ii
Safety Rules	1-4
Safety Decals	5
Maintenance Schedule	6
Bolt Torque Requirements	7-8
Front Idler & Hub Breakdown (Historical)	9
Front Idler Suspension & Hub Breakdown	10
Front Brake & Hub Breakdown (Historical).....	11
Front Brake Suspension & Hub Breakdown	12
Bearing Inspection/Lubrication	13
Seal Inspection/Bearing Adjustment.....	14
E-Z Lube Lubrication	15
Electric Brakes Adjustment.....	16
Electrical Diagrams.....	17-19
Break-Away System	20-21
Head Mount Options (Historical)	22
Adjustable Slider Bracket	23-24
Draper & Stalk Adjustable Slider Bracket.....	25
Mounting Brackets.....	26
Header Alignment Tape	27
Header Securement	28
Adjustable Tie-Down.....	29
Standard Tongue Breakdown (Historical).....	30
710 Telescoping Tongue Breakdown	31-32
460 Telescoping Tongue Breakdown	33-34
Main Parts Breakdown	35-36
Twin Front Fender Breakdown	37-38
Optional Second Rear Axle	39-40
Optional Top Rail Extender.....	41-47
Optional Rear Fenders	48
GVW Ratings.....	49
Head Transport Check List.....	50
Dealer Instructions.....	51
Warranty	52
Warranty for Parts	53



INTRODUCTION

Thank you for purchasing a Maurer Combine Head Transport. We feel you have made a wise choice and hope you are completely satisfied with your new piece of equipment. Proper care and use will result in many years of service.

WARNING: To Avoid Personal Injury or Death, Observe following Instructions:

Never overload combine head transport. Do not exceed the load rating of the axle or load rating of tires, whichever is less.

Ensure that anybody present is clear before applying power to any machinery used in conjunction with the combine head transport or when moving the transport.

Never allow anyone on combine head transport during travel, loading, or unloading of combine head.

DO NOT exceed the tire manufacturer's recommended safe towing speeds.

GENERAL INFORMATION

1. Unless otherwise specified, high-strength (grade5) (3 radial-line head markings) hex head bolts are used throughout assembly of this piece of equipment.
2. Whenever terms "LEFT" and "RIGHT" are used in this manual it means from a position behind the combine head transport and facing forward.
3. When placing a parts order, refer to this manual for proper part numbers and place order by PART NO. and DESCRIPTION.
4. Read assembly instructions carefully. Study assembly procedures and all illustrations before you begin assembly. Note which parts are used in each step. This unit must be assembled in proper sequence or complications will result.

Throughout this manual, the term IMPORTANT is used to indicate that failure to observe can cause damage to equipment. The terms CAUTION, WARNING and DANGER are used in conjunction with the Safety-Alert Symbol (a triangle with an exclamation mark) to indicate the degree of hazard for items of personal safety.



This Safety-Alert Symbol indicates a hazard and means ATTENTION! BECOME ALERT! YOUR SAFETY IS INVOLVED!

DANGER

Indicates an imminently hazardous situation that, if not avoided, will result in death or serious injury.

WARNING

Indicates a potentially hazardous situation that, if not avoided, could result in death or serious injury, and include hazards that are exposed when guards are removed.

CAUTION

Indicates a potentially hazardous situation that, if not avoided, may result in minor or moderate injury.

IMPORTANT NOTE

Indicates that failure to observe can cause damage to equipment.

Indicates helpful information.

SAFETY RULES



ATTENTION! BECOME ALERT! YOUR SAFETY IS INVOLVED!



Safety is a primary concern in the design and manufacture of our products. Unfortunately, our efforts to provide safe equipment can be wiped out by an operator's single careless act.

Every year many accidents occur which could have been avoided by a few seconds of thought and a more careful approach to handling equipment. You, the operator, can avoid many accidents by observing the following precautions in this section. To avoid personal injury, study the following precautions and insist those working with you, and you yourself, follow them.

In addition to the design and configuration of equipment, hazard control and accident prevention are dependent upon the awareness, concern, judgment, and proper training of personnel involved in the operation, transport, maintenance and storage of equipment.

In order to provide a better view, certain illustrations in this manual may show an assembly with a safety shield removed. However, equipment should never be operated in this condition. Keep all shields in place. If shield removal becomes necessary for repairs, replace shield prior to use.

It has been said "The best safety device is an informed, careful operator." We ask you to be that kind of operator.

TRAINING

- Safety instructions are important! Read all attachment manuals; follow all safety rules and safety decal information. Failure to follow instructions or safety rules can result in serious injury or death.
- Don't hurry the learning process or take unit for granted in becoming familiar with your new equipment.
- If you do not understand any part of this manual and need assistance, see your dealer.

(Replacement manuals are available from selling dealer.)

- Operators must be instructed in and be capable of the safe operation of the equipment, its attachments, and all controls. Do not allow anyone to operate this equipment without proper instructions.
- Never allow children or untrained persons to operate equipment.
- Train all new personnel and review instructions frequently with existing workers. A person who has not read and understood all operating and safety instructions is not qualified to operate the machine. An untrained operator exposes himself and bystanders to possible serious injury or death.
- Never exceed limits of a piece of machinery. If its ability to do a job or to do so safely is in question, DON'T TRY IT.

- Do not use unit until you are sure that area is clear, especially around children and animals.

PREPARATION

- Always wear relatively tight and belted clothing to avoid getting caught in moving parts. Wear sturdy, rough-soled work shoes and protective equipment for eyes, hair, hands, hearing, and head; and respirator or filter mask where appropriate.
- Keep wheel and lug nuts tightened to specified torque.
- Assure that tires are inflated evenly.
- Give unit a visual inspection for any loose bolts, worn parts, or cracked welds, and make necessary repairs. Follow maintenance safety instructions in this manual.
- Make sure there are not tools lying on or in equipment.
- Make sure that brakes are evenly adjusted (if equipped with brakes).

SAFETY RULES



ATTENTION! BECOME ALERT! YOUR SAFETY IS INVOLVED!



- Do not allow anyone to stand between tongue or hitch and towing vehicle when backing up to equipment.

TRANSPORTATION

- Always comply with all state and local laws governing highway safety and movement of farm machinery on public roads. Local laws should also be checked for all highway lighting and marking requirements.
- If equipment is going to be transported on a public highway, always follow state and local regulations regarding safety chains. Be sure to check with local law enforcement agencies for your own particular regulations. If required safety chains should be obtained and installed, only safety chains (not elastic or nylon/plastic tow straps) should be used to retain connection between towing and towed machines in event of separation of primary attaching system. Use a high strength, appropriate size hitch pin with a mechanical retainer and attach safety chains. Crisscross chains under tongue and secure to draw bar cage, mounting loops, or bumper frame.
- Never use independent braking with machine in tow, loss of control and/or upset of unit can result.
- Always drive at a safe speed relative to local conditions, ensuring that your speed is low enough for an emergency stop. Keep speed to a minimum.
- Always keep towing vehicle in gear to provide engine braking when going downhill. Do not coast.
- Comply with state and local laws governing highway safety and movement of farm machinery on public roads.
- Use approved accessory lighting, flags and necessary warning devices to protect operators of other vehicles on highway during transport. Various safety lights and devices are available from your dealer.

- Local laws should be checked for all highway lighting and marking requirements.
- Plan your route to avoid heavy traffic.
- Be a safe and courteous driver. Always yield to oncoming traffic in all situations, including narrow bridges, intersections, etc.
- Be observant of bridge load ratings. Do not cross bridges rated lower than gross weight at which you are operating.
- Watch for obstructions overhead and side to side while transporting.
- Always operate equipment in a position to provide maximum visibility. Make allowances for increased length and weight of equipment when making turns, stopping unit, etc.
- Never allow riders on the tow vehicle or attachment.
- Do not operate or transport on steep slopes.
- Use extreme care and reduce ground speed on slopes and rough terrain.
- Do not operate or transport equipment while under the influence of alcohol or drugs. Consult your doctor about operating this machine while taking prescription medications.

OPERATION

- Never go underneath equipment (lowered to the ground or raised) unless it is properly blocked and secure.
- Always comply with all state and local laws governing highway safety and lighting and marking requirements. (Lighting kits are available from your dealer.)

SAFETY RULES



ATTENTION! BECOME ALERT! YOUR SAFETY IS INVOLVED!



- Beware of bystanders, particularly children, pets, and livestock! Always look around to make sure that it is safe to start engine to towing vehicle or to move unit. This is particularly important with higher noise levels and quiet cabs, as you may not hear verbal warnings.
- Keep hands, feet, hair, and clothing away from equipment while engine is running. Stay clear of all moving parts.
- Never allow riders on the tow vehicle or attachment.
- Always sit in tow vehicle seat when operating controls or starting engine. Securely fasten seat belt, place transmission in neutral, engage brake, and ensure all other controls are disengaged before starting tow vehicle engine.
- Be especially observant of operating area and terrain. Watch for loose gravel, holes, rocks, or other hidden hazards; they can be dangerous for equipment operation or movement. Always inspect area prior to operation. Look down and to the rear and make sure area is clear before operating in reverse.
- Pick the most level possible route when transporting across fields. Use extreme care when working close to fences, ditches, other obstructions, or on hillsides.
- Do not stop, start, or change directions suddenly on slopes as overturn may result. Always operate or transport down slopes, never across the face.
- Use extreme care and reduce ground speed on slopes and rough terrain.
- Before leaving tow vehicle or halting operation, even periodically, set tractor or towing vehicle brakes, disengage PTO, shut off engine, and remove ignition key.
- Maneuver tractor or towing vehicle at safe speeds and allow for unit length when making turns.

AFTER SEASON STORAGE

- When unhitching, stop tractor or towing vehicle, set brakes, shut off engine and remove ignition key.
- Store unit in an area away from human activity.
- Do not park equipment where it will be exposed to livestock for long periods of time. Damage and livestock injury could result.
- Do not permit children to play on or around stored unit.
- Make sure all parked machines are on a hard, level surface and engage all safety devices.
- Wheel chocks may be needed to prevent unit from rolling.

MAINTENANCE

- Good maintenance is your responsibility. Poor maintenance is an invitation to trouble.
- Always wear relatively tight and belted clothing to avoid getting caught in moving parts. Wear sturdy, rough-soled work shoes and protective equipment for eyes, hair, hands, hearing, and head; and respirator or filter mask where appropriate.
- Make sure there is plenty of ventilation. Never operate engine of towing vehicle in a closed building. Exhaust fumes may cause asphyxiation.
- Before working on this equipment, stop towing vehicle, set brakes, shut off engine and remove ignition key.
- When performing maintenance or repairs make sure the equipment is in the lowered position and the mainframe is properly blocked and secured to prevent rolling. Failure to do so can cause serious injury or death. Never use a jack to support equipment.
- As a precaution, always recheck hardware on equipment following every 100 hours of operation.

SAFETY RULES



ATTENTION! BECOME ALERT! YOUR SAFETY IS INVOLVED!



Correct all problems. Follow maintenance safety procedures.

- Use extreme caution when making adjustments.
- Always use proper tools or equipment for job at hand.
- Do not allow grease or oil to build up on any steps or platform.
- Replace all shields and guards after servicing and before moving.
- When replacing bolts, refer to owner's manual.
- Refer to bolt torque chart for head identification marking. Also follow torque chart in this manual when tightening bolts and nuts.
- After servicing, be sure all tools, parts and service equipment are removed.
- Where replacement parts are necessary for periodic maintenance and servicing, genuine factory replacement parts must be used to restore your equipment to original specifications. Manufacturer will not claim responsibility for use of unapproved parts or accessories and other damages as a result of their use.
- If equipment has been altered in any way from original design, manufacturer does not accept any liability for injury or warranty.
- A fire extinguisher and first aid kit should be kept readily accessible while performing maintenance on this equipment.

REMEMBER

Your best assurance against accidents is a careful and responsible operator. If there is any portion of this manual or function you do not understand, contact your local authorized dealer or manufacturer.

SAFETY & INSTRUCTIONAL DECALS



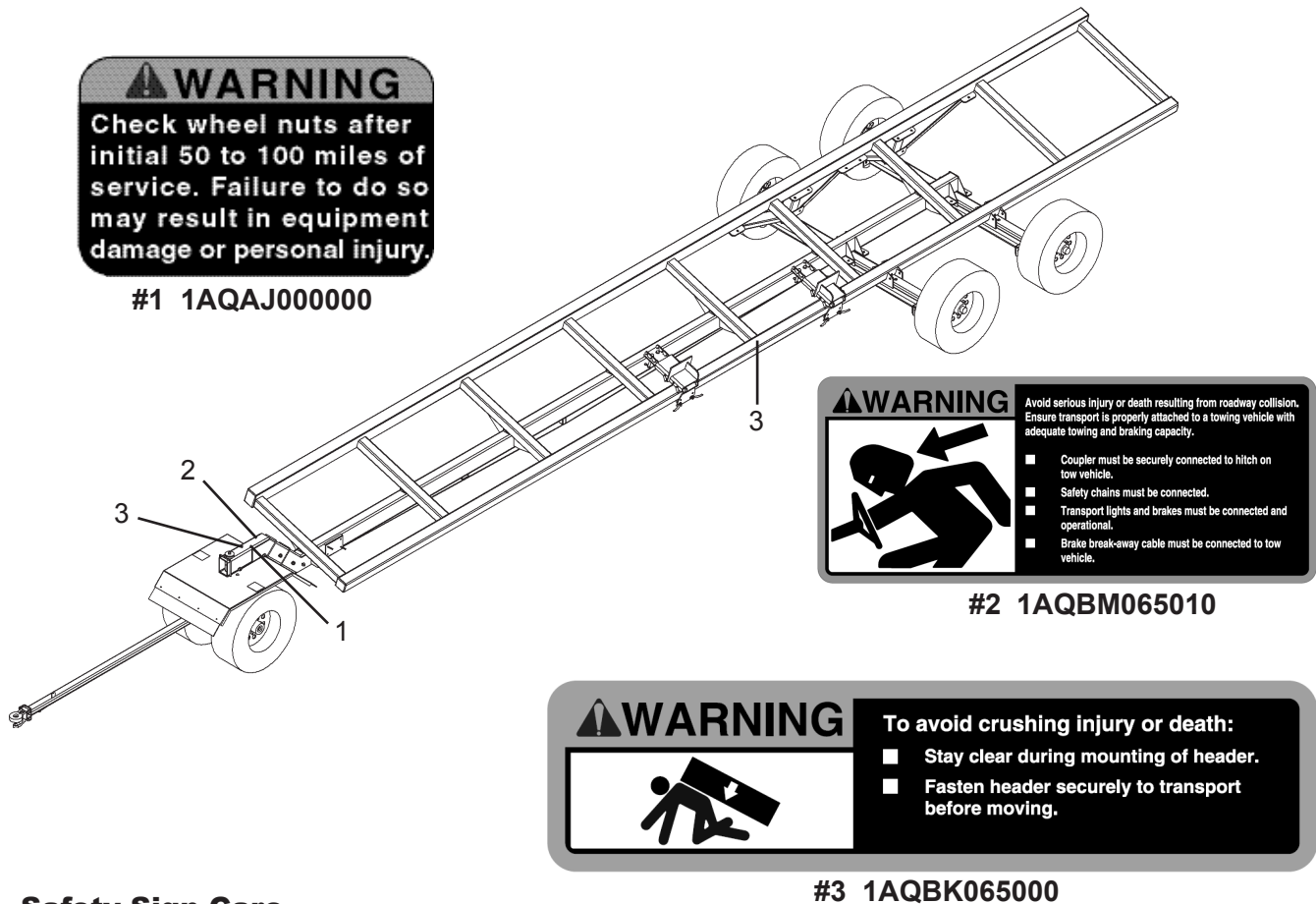
ATTENTION! BECOME ALERT! YOUR SAFETY IS INVOLVED!

FAILURE TO FOLLOW THESE INSTRUCTIONS COULD RESULT IN SERIOUS INJURY OR DEATH

Replace Decals Immediately If Damaged!

Safety Sign Locations

Types of safety signs and locations on equipment are shown in illustration below. Good safety requires that you familiarize yourself with various safety signs, type of warning, and area or particular function related to that area, that requires your SAFETY AWARENESS.



Safety Sign Care

- Keep safety signs clean and legible at all times.
- Replace safety signs that are missing or have become illegible.
- Replacement parts that displayed a safety sign should also display current sign.
- Safety signs are available from your distributor, dealer parts department, or factory.

How to install safety signs:

- Be sure that installation area is clean and dry.
- Decide on exact position before you remove backing paper.
- Remove smallest portion of split backing paper.
- Align decal over specified area and carefully press small portion with exposed sticky backing in place.
- Slowly peel back remaining paper and carefully smooth remaining portion of decal into place.
- Small air pockets can be pierced with a pin and smoothed out using a piece of decal backing paper.

MAINTENANCE SCHEDULE

Item	Function Required	Weekly	3 Months or 3000 Miles	6 Months or 6000 Miles	12 Months or 12000 Miles
Brakes	Test that they are operational	At Every Use			
Brake Adjustment	Adjust to proper operating clearance		X		
Brake Magnets	Inspect for wear and current draw			X	
Brake Linings	Inspect for wear or contamination				X
Brake Controller	Check for correct amperage & modulation			X	
Brake Cylinders	Check for leaks, sticking				X
Brake Lines	Inspect for cracks, leaks, kinks				X
Trailer Brake Wiring	Inspect wiring for bare spots, fray, etc.				X
Breakaway System	Check battery charge and switch operation	At Every Use			
Hub/Drum	Inspect for abnormal wear or scoring				X
Wheel Bearings & Cups	Inspect for corrosion or wear. Clean & repack			X	
Seals	Inspect for leakage Replace if removed			X	
Springs	Inspect for wear, loss of arch				X
Suspension Parts	Inspect for bending, loose fasteners, wear			X	
Hangers	Inspect welds				X
Wheel Nuts & Bolts	Tighten to specified torque values		X		
Wheels	Inspect for cracks, dents or distortion			X	
Tire Inflation Pressure	Inflate tires to mfg's specification	X			
Tire Condition	Inspect for cuts, wear, bulging, etc.		X		



WARNING

TO AVOID PERSONAL INJURY OR DEATH. Only certified mechanic should be allowed to make adjustments to the brake system.

Maintenance Schedule 6

BOLT TORQUE

TORQUE DATA FOR STANDARD NUTS, BOLTS, AND CAPSCREWS.

Tighten all bolts to torques specified in chart unless otherwise noted. Check tightness of bolts periodically, using bolt chart as guide. Replace hardware with same grade bolt.

NOTE: Unless otherwise specified, high-strength Grade 5 hex bolts are used throughout assembly of equipment.

Bolt Torque for Standard bolts *

Torque Specifications

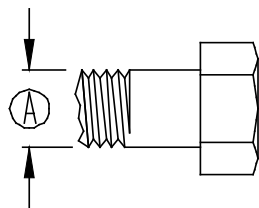
Torque figures indicated are valid for non-greased or non-oiled threads and heads unless otherwise specified. Therefore, do not grease or oil bolts or cap screws unless otherwise specified in this manual. When using locking elements, increase torque values by 5%.

"A"	GRADE 2		GRADE 5		GRADE 8	
	lb-ft	(N-m)	lb-ft	(N-m)	lb-ft	(N-m)
1/4"	6	(8)	9	(12)	12	(16)
5/16"	10	(13)	18	(25)	25	(35)
3/8"	20	(27)	30	(40)	45	(60)
7/16"	30	(40)	50	(70)	80	(110)
1/2"	45	(60)	75	(100)	115	(155)
9/16"	70	(95)	115	(155)	165	(220)
5/8"	95	(130)	150	(200)	225	(300)
3/4"	165	(225)	290	(390)	400	(540)
7/8"	170	(230)	420	(570)	650	(880)
1"	225	(300)	630	(850)	970	(1310)

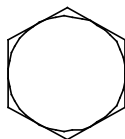
Bolt Torque for Metric bolts *

"A"	CLASS 8.8		CLASS 9.8		CLASS 10.9	
	lb-ft	(N-m)	lb-ft	(N-m)	lb-ft	(N-m)
6	9	(13)	10	(14)	13	(17)
7	15	(21)	18	(24)	21	(29)
8	23	(31)	25	(34)	31	(42)
10	45	(61)	50	(68)	61	(83)
12	78	(106)	88	(118)	106	(144)
14	125	(169)	140	(189)	170	(230)
16	194	(263)	216	(293)	263	(357)
18	268	(363)	--	--	364	(493)
20	378	(513)	--	--	515	(689)
22	516	(699)	--	--	702	(952)
24	654	(886)	--	--	890	(1206)

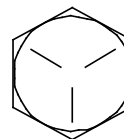
* GRADE or CLASS value for bolts and cap screws are identified by their head markings.



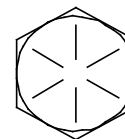
GRADE-2



GRADE-5



GRADE-8



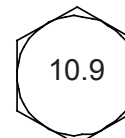
CLASS 8.8



CLASS 9.8



CLASS 10.9



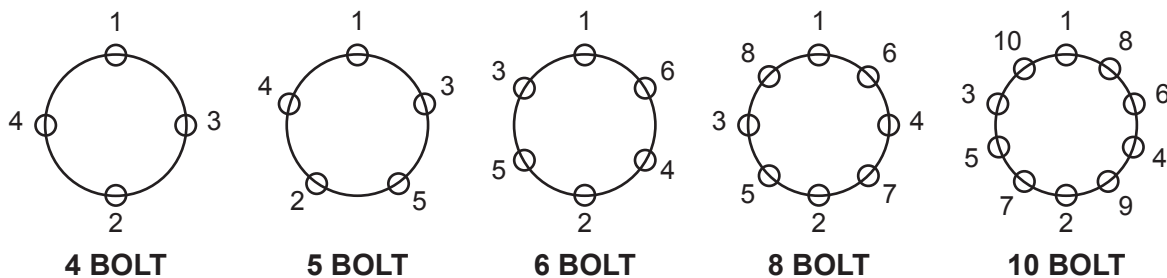
Torque Requirements

It is extremely important to apply and maintain proper wheel mounting torque on your trailer axle. Torque is a measure of the amount of tightening applied to a fastener (nut or bolt) and is expressed as length times force. For example, a force of 90 pounds applied at the end of a wrench one foot long will yield 90 lbs/ft of torque. Torque wrenches are the best method to assure the proper amount of torque is being applied to a fastener.

NOTE: Wheel nuts or bolts must be applied and maintained at the proper torque levels to prevent loose wheels, broken studs, and possible dangerous separation of wheels from your axle.

Be sure to use only the fasteners matched to the cone angle of your wheel (usually 60° or 90°). The proper procedure for attaching your wheels is as follows:

1. Start all bolts or nuts by hand to prevent cross threading.
2. Tighten bolts or nuts in the following sequence.
3. The tightening of the fasteners should be done in stages. Following the recommended sequence, tighten fasteners per wheel torque requirements diagram:



4. Wheel nuts/bolts should be torqued before first road use and after each wheel removal. Check and re-torque after the first 50 miles (61km) and again at 100 miles (161km). Check periodically thereafter.

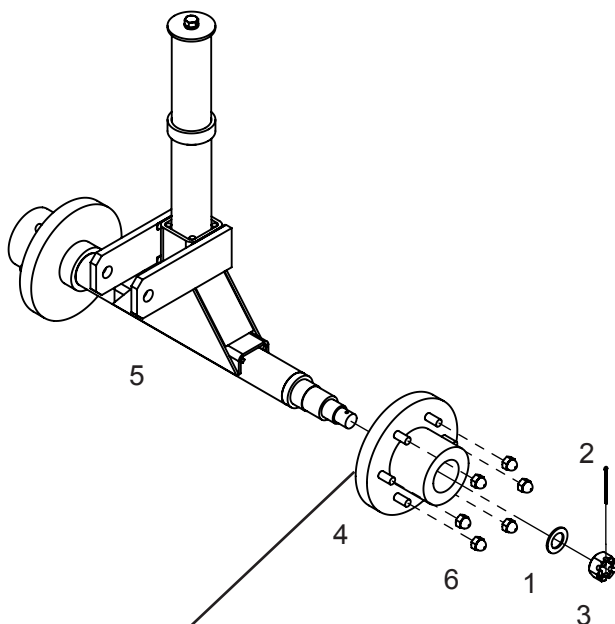
Wheel & Rim Torque Requirements

Description	Application	Minimum Torque		Maximum Torque	
		lb-ft	(N-m)	lb-ft	(N-m)
1/2" Cone nut	12" – 13" Wheel	50	(68)	65	(89)
	14" – 16" Wheel	90	(122)	120	(163)
5/8" Cone nut	Flat disc wheel	175	(238)	225	(305)
5/8" Cone nut	Clamp ring	190	(258)	210	(285)
3/4" Hex nut	Demountable Ring clamp	210	(285)	260	(353)
3/4" Spherical nut	Single wheel	450	(611)	500	(678)
	Inner dual	450	(611)	500	(678)
1-1/8" Spherical nut	Outer dual	450	(611)	500	(678)
5/8" Flange nut	Wheels	275	(373)	325	(441)

Wide Stance Front Idler Axle & Hub Breakdown

Ref No.	Part Number	Qty	Description
1	1AF009Q0000	2	1" I.D. X 1-3/4" O.D. X .115 Washer
2	1AF033CBAD0	2	5/32" X 2-1/4" Cotter Pin
3	1AFF63Q0000	2	1"-14 Hex Slotted Jam Nut, Plain
4	1AV90000000	2	Head Trailer Hub Assembly
5	5H000035	1	Wide Stance Front Axle Idler
6	1AFF68H0000	12	1/2" Coned Wheel (Lug) Nut

Please order replacement parts by Part Number and Description.



Recommended Wheel Bearing Lubrication Specifications

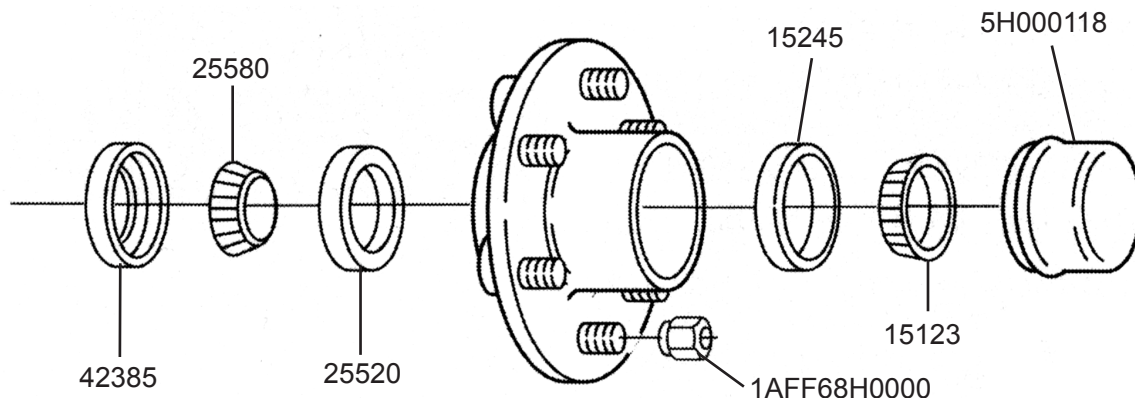
Grease:

Thickener Type..... Lithium Complex
 Dropping Point..... 230°C (446°F) Minimum
 Consistency..... NLGI No. 2
 Additives..... EP, Corrosion & Oxidation Inhibitors
 Base Oil..... Solvent Refined Petroleum Oil
 Base Oil Viscosity...@40°C (104°F) 150cSt(695 SUS) Min.
 Viscosity Index..... 80 Minimum

Approved Sources:

Mobil Oil..... Mobilgrease HP
 Exxon/Standard..... Ronex MP
 Kendall Refining Co..... Kendall L-427
 Ashland Oil Co. Valvoline Val-plex EP Grease
 Pennzoil Prod. Co. ... Premium Wheel Bearing Grease 707L

HUB BREAKDOWN



* Industry standard bearing, race, and seal identification numbers are shown in this view.

Historical - Front Idler & Hub Breakdown 9

Wide Front Idler Suspension Axle & Hub Breakdown

Ref No.	Part Number	Qty	Description
1	1AF009Q0000	2	1" I.D. X 1-3/4" O.D. X .115 Washer
2	1AF033CBAD0	2	5/32" X 2-1/4" Cotter Pin
3	1AFF63Q0000	2	1"-14 Hex Slotted Jam Nut, Plain
4	1AV90000000	2	Head Trailer Hub Assembly
5	5H000163	1	Front Axle Suspension - Idler
6*	5H000171	1	48' HT Front Axle Suspension - Idler, 22.5 Down Angle
7	1AFF68H0000	12	1/2" Coned Wheel (Lug) Nut

Please order replacement parts by Part Number and Description.
(* =Front Suspension Assy for 32', 38', 42' & 48' HT ONLY)

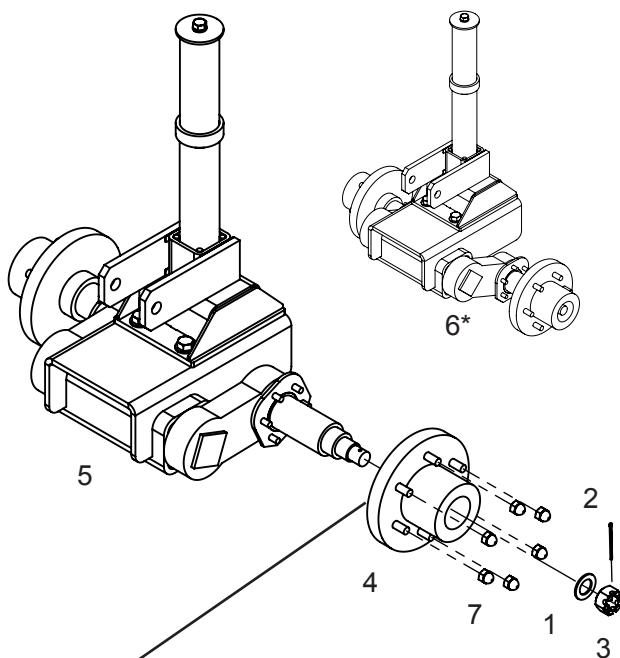
Recommended Wheel Bearing Lubrication Specifications

Grease:

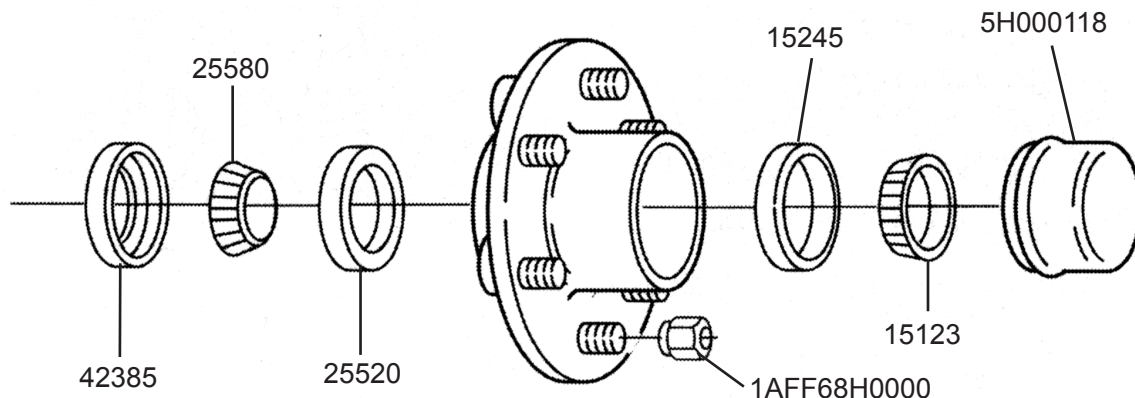
Thickener Type..... Lithium Complex
Dropping Point..... 230°C (446°F) Minimum
Consistency.....NLGI No. 2
Additives..... EP, Corrosion & Oxidation Inhibitors
Base Oil..... Solvent Refined Petroleum Oil
Base Oil Viscosity...@40°C (104°F) 150cSt(695 SUS) Min.
Viscosity Index..... 80 Minimum

Approved Sources:

Mobil Oil..... Mobilgrease HP
Exxon/Standard.....Ronex MP
Kendall Refining Co.....Kendall L-427
Ashland Oil Co.Valvoline Val-plex EP Grease
Pennzoil Prod. Co. ...Premium Wheel Bearing Grease 707L



HUB BREAKDOWN

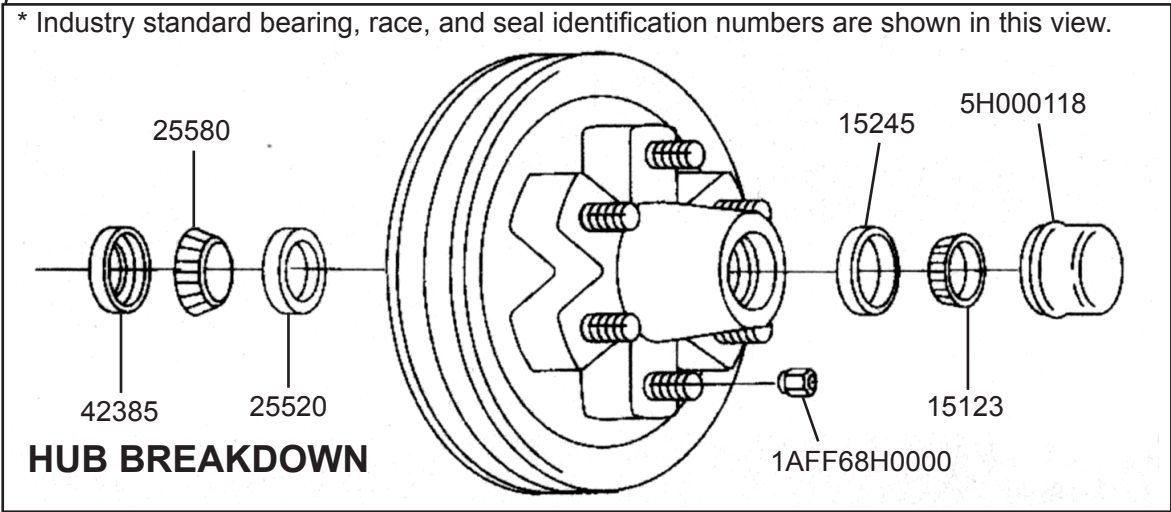
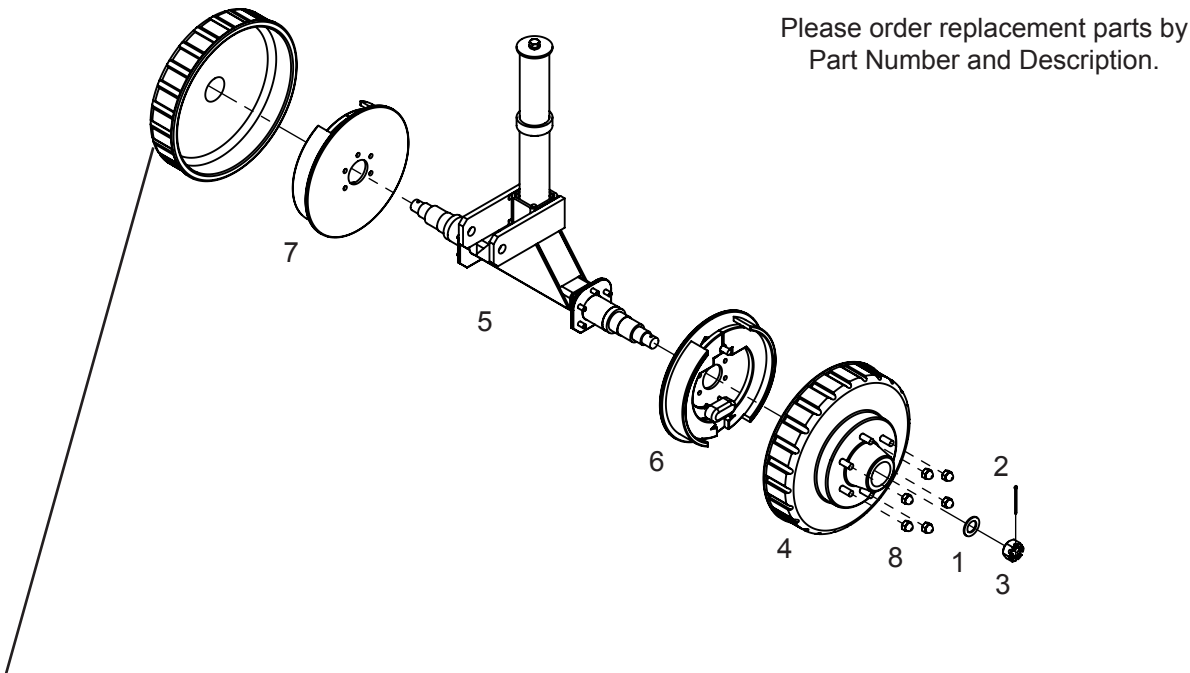


* Industry standard bearing, race, and seal identification numbers are shown in this view.

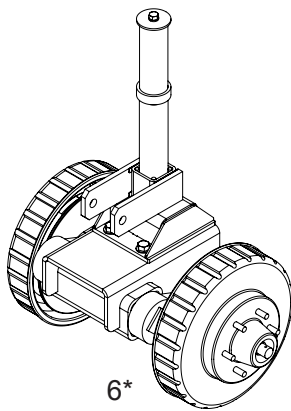
Front Idler Susp. & Hub Breakdown 10

Wide Stance Front Brake Axle & Hub Breakdown

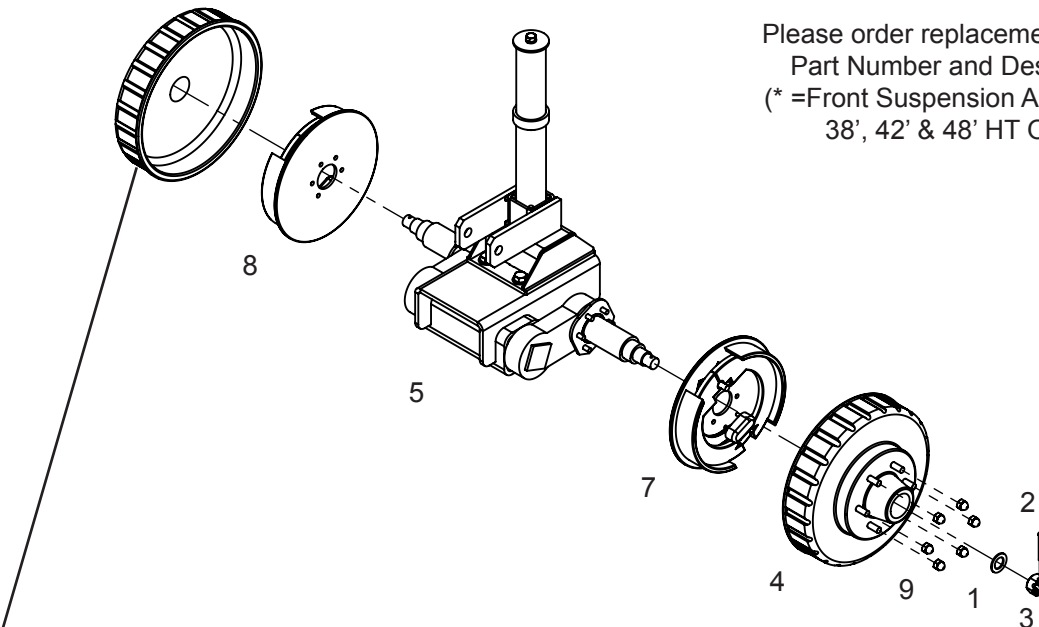
Ref No.	Part Number	Qty	Description
1	1AF009Q0000	2	1" I.D. X 1-3/4" O.D. X .115 Washer
2	1AF033CBAD0	2	5/32" X 2-1/4" Cotter Pin
3	1AFF63Q0000	2	1"-14 Hex Slotted Jam Nut, Plain
4	1AAB6AEHA0H	2	Complete Hub & Drum w/ 2-1/4" ID Seal
5	5H000064	1	Wide Stance Front Axle Brake
6	1AAB6AEL00H	1	Elec Brake-Left, 12" X 2" w/ Hardware
7	1AAB6AER00H	1	Elec Brake-Right, 12" X 2" w/ Hardware
8	1AFF68H0000	12	1/2" Coned Wheel (Lug) Nut



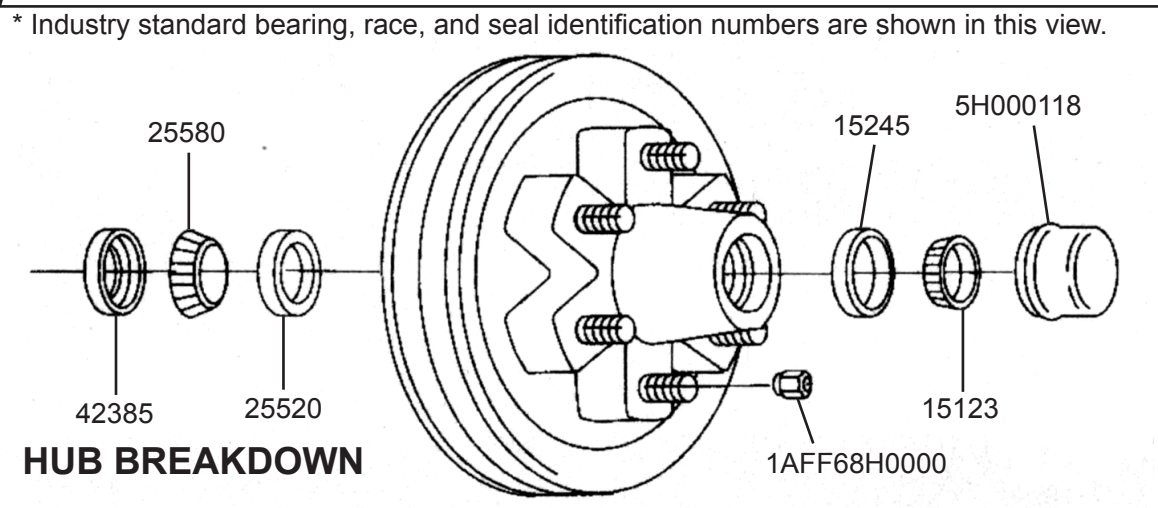
Wide Front Brake Suspension Axle & Hub Breakdown



Ref No.	Part Number	Qty	Description
1	1AF009Q0000	2	1" I.D. X 1-3/4" O.D. X .115 Washer
2	1AF033CBAD0	2	5/32" X 2-1/4" Cotter Pin
3	1AFF63Q0000	2	1"-14 Hex Slotted Jam Nut, Plain
4	1AAB6AEHA0H	2	Complete Hub & Drum w/ 2-1/4" ID Seal
5	5H000162	1	HT Front Suspension Axle - Brake
6	5H000167	1	HT Front Suspension Axle - Brake, 22.5 Down Angle
7	1AAB6AEL00H	1	Elec Brake-Left, 12" X 2" w/ Hardware
8	1AAB6AER00H	1	Elec Brake-Right, 12" X 2" w/ Hardware
9	1AFF68H0000	1	1/2" Coned Wheel (Lug) Nut



Please order replacement parts by Part Number and Description.
(* =Front Suspension Assy for 32', 38', 42' & 48' HT ONLY)



Front Susp. Brake & Hub Breakdown 12

Bearing Inspection

Wash all grease and oil from the bearing cone using a suitable solvent. Dry the bearing with a clean, lint-free cloth and inspect each roller completely.

⚠ CAUTION: Never spin the bearing with compressed air. THIS CAN DAMAGE THE BEARING.

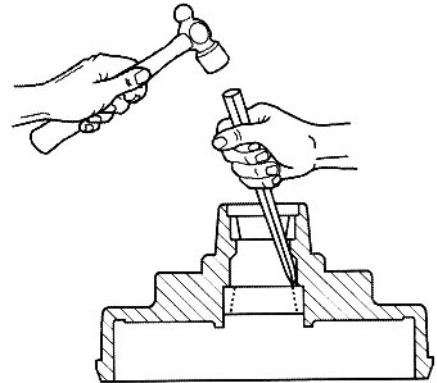
If any pitting, spalling, or corrosion is present, then the bearing must be replaced. The bearing cup inside the hub must be inspected.

IMPORTANT: Bearings must always be replaced in sets of a cone and a cup.

⚠ CAUTION: Be sure to wear safety glasses when removing or installing force fitted parts. Failure to comply may result in serious eye injury.

When replacing the bearing cup proceed as follows:

1. Place the hub on a flat work surface with the cup to be replaced on the bottom side.
2. Using a brass drift punch, carefully tap around the small diameter end of the cup to drive out.
3. After cleaning the hub bore area, replace the cup by tapping in with the brass drift punch. Be sure the cup is seated all the way up against the retaining shoulder in the hub.



Bearing Lubrication

⚠ CAUTION: Do not mix Lithium, calcium, sodium or barium complex greases due to possible compatibility problems. When changing from one type of grease to another, it is necessary to ensure all the old grease has been removed.

Along with bearing adjustment, proper lubrication is essential to the current function and reliability of your trailer axle. Bearings should be lubricated every 6 months or 6,000 miles (9,655 Km). The method to repack bearing cones is as follows:

1. Place a quantity of grease into the palm of your hand.
2. Press a section of the widest end of the bearing into the outer edge of the grease pile closest to the thumb, forcing grease into the interior of the bearing.
3. Repeat this while rotating the bearing from roller to roller.
4. Continue this process until you have the entire bearing completely filled with grease.
5. Before reinstalling, apply a light coat of grease on the bearing cup.



Seal Inspection and Replacement

Whenever the hub is removed, inspect the seal to assure that it is not nicked or torn and is still capable of properly sealing the bearing cavity. If there is any question of condition, replace the seal.

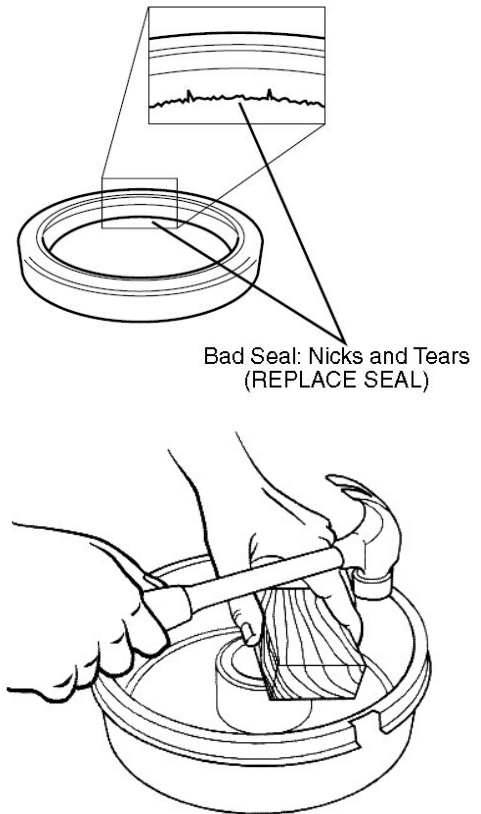
Note: If hubs are removed from an axle with the E-Z Lube feature, it is imperative that the seals be replaced BEFORE bearing lubrication. Otherwise, the chance of grease getting on brake linings is greatly increased.

To replace seal:

1. Pry the seal out of the hub with a screwdriver. Never drive the seal out with the inner bearing as you may damage the bearing.
2. Apply a sealant similar to PERMATEX High-Temp Red RTV Silicone Gasket to the outside of the new seal.

Note: A sealant should not be use on rubber encased seals.

3. Tap the new seal into place using a clean wood block.



Bearing Adjustment and Hub Replacement

If the hub has been removed or bearing adjustment is required, the following adjustment procedure must be followed:

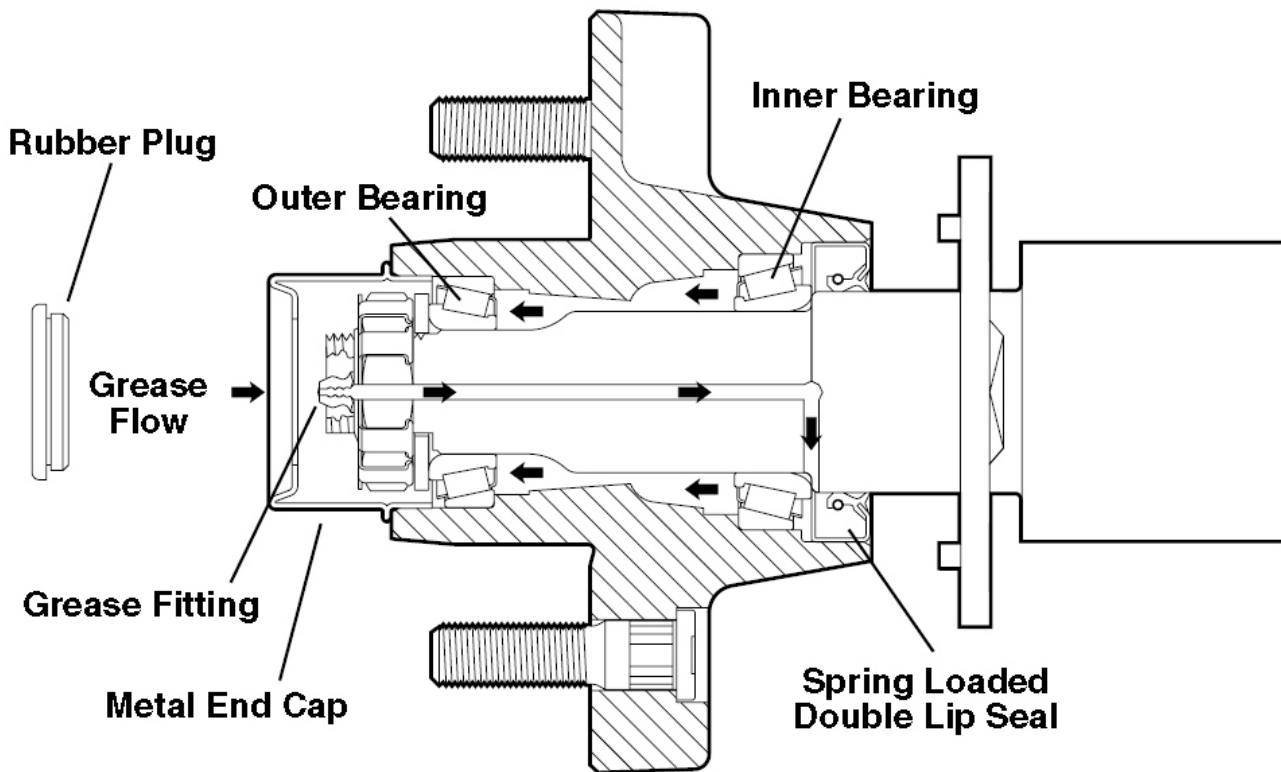
1. After placing the hub, bearings, washers, and spindle nut back on the axle spindle in reverse order as detailed in the previous section on hub removal, rotate the hub assembly slowly while tightening the spindle nut to approximately 50 lb-ft (68 N-m) (12" wrench or pliers with full hand force).
2. Then loosen the spindle nut to remove the torque. Do not rotate the hub.
3. Finger tighten the spindle nut until just snug.
4. Back the spindle nut out slightly until the first castellation lines up with the cotter key hole and insert the cotter pin (or locking tang in the case of E-Z Lube).
5. Bend over the cotter pin legs to secure the nut (or locking tang in the case of E-Z Lube).
6. Nut should be free to move with only restraint being the cotter pin (or locking tang).
7. Reinstall grease cap.

E-Z Lube Lubrication

The procedure is as follows:

1. Remove the rubber plug from the end of the grease cap.
2. Place a standard manual grease gun onto the grease fitting located in the end of the spindle. Make sure the grease gun nozzle is fully engaged on the fitting.
3. Pump grease slowly into the fitting. The old displaced grease will begin to flow back out the cap around the grease gun nozzle.
4. When the new clean grease is observed, remove the grease gun, wipe off any excess, and replace the rubber plug in the cap.
5. Rotate hub or drum while adding grease.

Note: It is strongly recommended to not use pneumatic powered grease guns as they can inject grease too fast and force grease past the seal, or in rare cases dislodge the seal.



Electric Brakes Adjustment

Brake Adjustment

Brakes should be adjusted (1) after the first 200 miles (322 km) of operation when the brake shoes and drums have “seated”, (2) at 3,000 miles (4,827 km) intervals, (3) or as use and performance requires. The brakes should be adjusted in the following manner:

1. Chock wheels to prevent the trailer from rolling.
2. Jack up the trailer and secure on adequate capacity jack stands. Make sure the wheel and drum rotates freely.

⚠ WARNING: Do not lift or support trailer on any part of the axle or the suspension system. Never crawl under your trailer unless it is resting on properly placed jack stands that are rated for the load. Improperly supported vehicles can fall unexpectedly and cause serious injury or death.

3. Remove the adjusting hole cover from the adjusting slot on the bottom of the brake backing plate.
4. With a screwdriver or standard adjusting tool, rotate the starwheel of the adjuster assembly to expand the brake shoes. Adjust the brake shoes out until the pressure of the linings against the drum makes the wheel very difficult to turn.

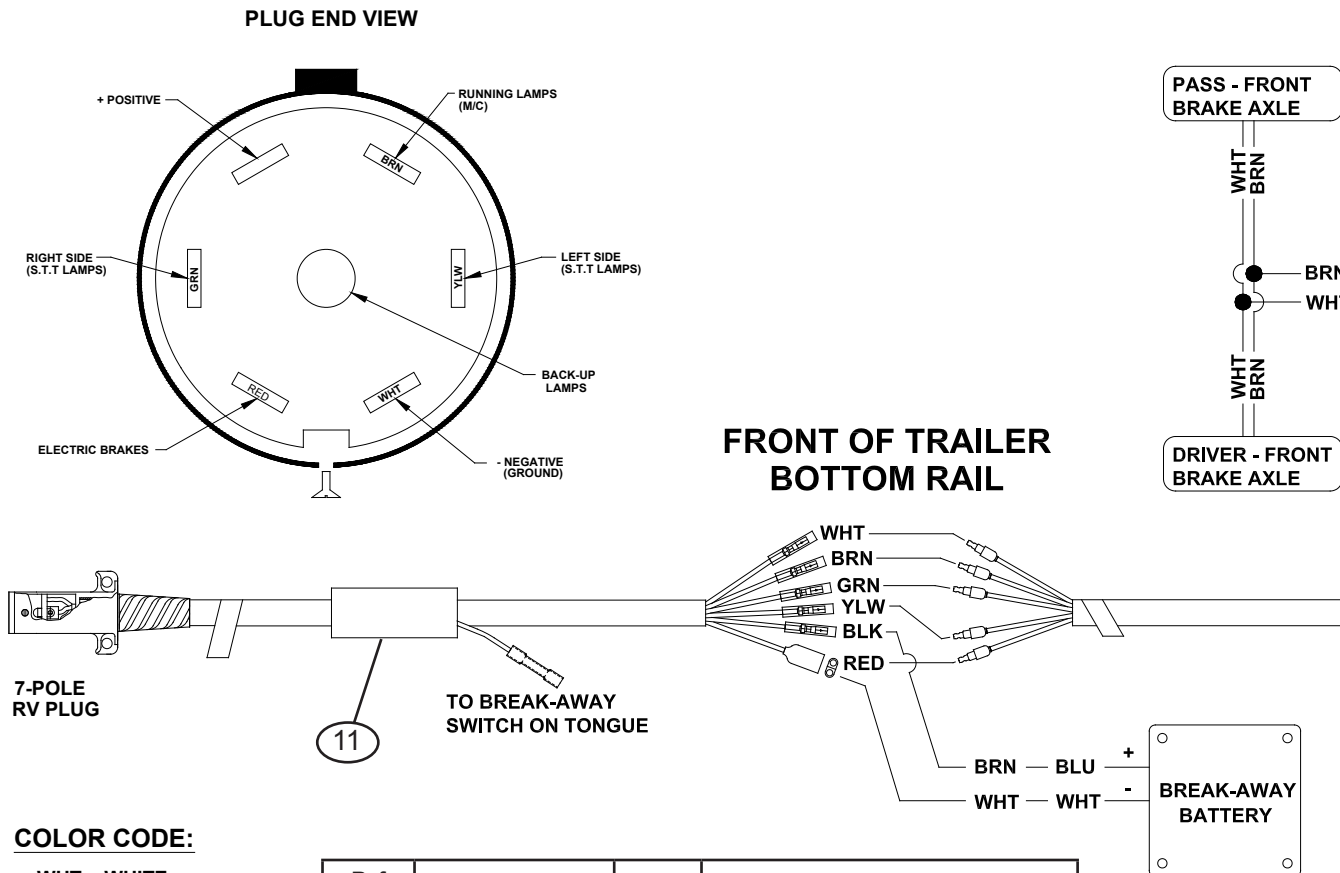
Note: For drop spindle axles, a modified adjusting tool may be necessary.

5. Then rotate the starwheel in the opposite direction until the wheel turns freely with a slight lining drag.
6. Replace the adjusting hole cover and lower the wheel to the ground.
7. Repeat the above procedure on all brakes. For best results, the brakes should all be set at the same clearance.

Wiring Schematic with Brakes

Notes:

1. The (Back-up) and (+ Positive) terminal of the 7-RV plug are not used.
 2. The black wire is to be terminated and not hooked into the 7-RV plug.
 3. The black wire is only used between the break-away switch and the break-away battery.
- * Locate wiring by function ONLY: Color coding is not standard among all manufacturers.
 ** Shown with optional License Plate Light

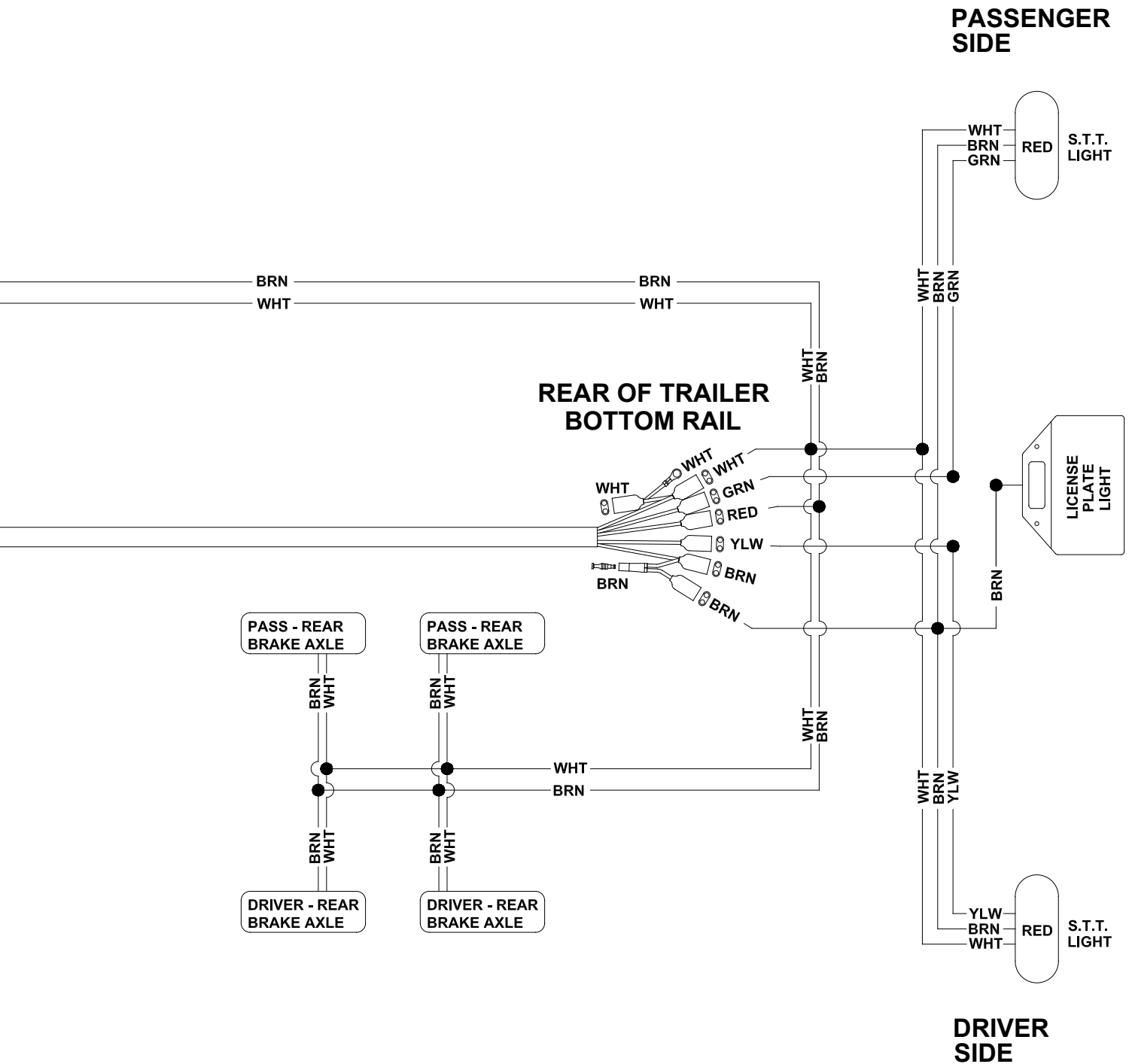


COLOR CODE:

WHT = WHITE
 BRN = BROWN
 GRN = GREEN
 YLW = YELLOW
 BLK = BLACK
 RED = RED
 BLU = BLUE

Ref No.	Part Number	Qty	Description
1	1AEK0481100	1	24'-28' Light Kit - 0 Brakes
2	1AEK0478800	1	24'-28' 1 Rear Brake Axle
3	1AEK0478900	1	24'-28' 1 Front Brake Axle (Steer)
4	1AEK0481200	1	32'-38'-42' Light Kit - 0 Brakes
5	1AEK0478500	1	32'-38'-42' 1 Rear Brake Axle
6	1AEK0478600	1	32'-38'-42' 2 Rear Brake Axle
7	1AEK0478700	1	32'-38'-42' Front Brake Axle (Steer)
8	1AEK0604000	1	48' Light Kit - 0 Brakes
9	1AEK0604100	1	48' 2 Rear Brake Axle
10	1AEK0604200	1	48' Front Brake Axle (Steer)
11	1AEX9890240	1	Front - 6 Wire Main - 240"

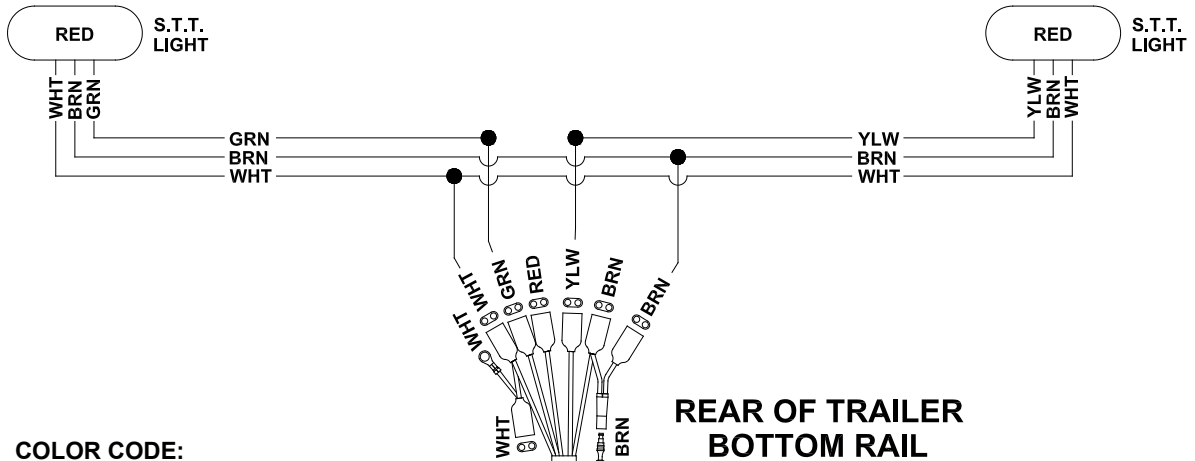
Wiring Schematic with Brakes



Wiring Schematic without Brakes

**PASSENGER
SIDE**

**DRIVER
SIDE**

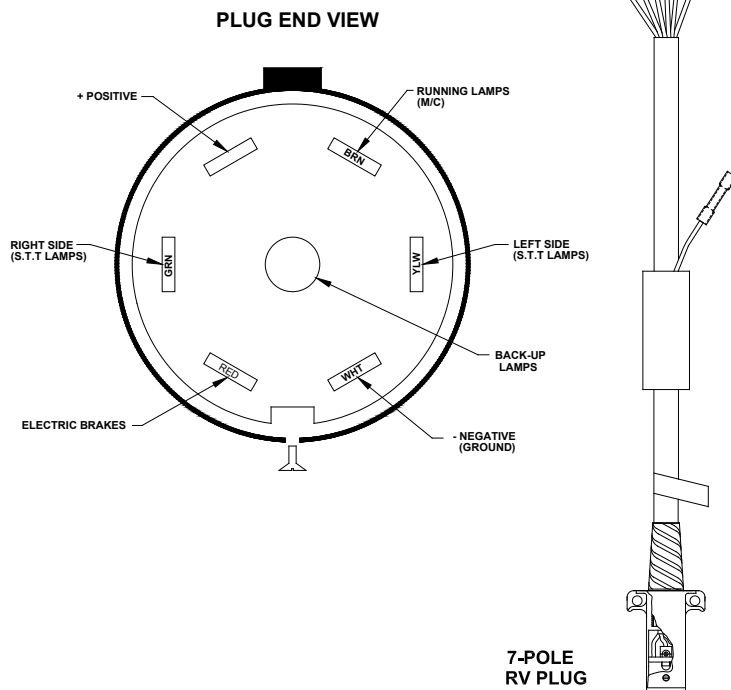


COLOR CODE:

WHT = WHITE
BRN = BROWN
GRN = GREEN
YLW = YELLOW
BLK = BLACK
RED = RED
BLU = BLUE

**REAR OF TRAILER
BOTTOM RAIL**

**FRONT OF TRAILER
BOTTOM RAIL**



BRAKEMASTER™

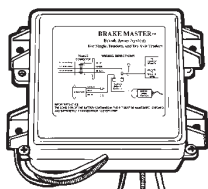
PART # 20001, #20002, #20003* and #20004*

Break-Away System for Single, Tandem, and Tri-Axle Trailers

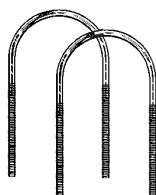
“Safety on the road”

Make sure you have all parts before you start your installation.

* Kits #20003 and #20004 do not include mounting hardware.



Break-Away Box



(2) U-Bolts

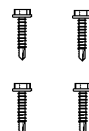
MOUNTING HARDWARE



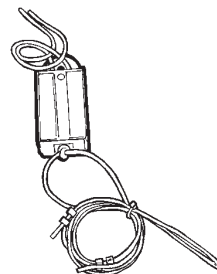
(4) Small Flat Washers



(4) Locking Nuts



(4) Self-Tap Screws



Break-Away Switch with Cable

The Break-Away System is designed to bring trailers safely to a stop by activating electric brakes, should a trailer be disconnected while driving. This type of safety system is required in most states on trailers rated over 3,000 GVW. The following instructions must be precisely followed to ensure proper operations. Please read the following instructions thoroughly before installing this product. Your trailer must have operational electric brakes before installation. Once you determine your trailer brakes work, find a secure location on your trailer to mount the Break-Away Kit. You have two options to mount this kit.

OPTION 1-

U-BOLT MOUNTING INSTRUCTIONS:

1. Use included U-Bolts and wrap around secure mounting surface on trailer (jack, frame, etc.).
2. Attach Break-Away Kit by routing U-Bolts through holes provided on each side of the plastic casing.
3. Place one flat washer over each bolt with locking nut. Use 1/2" wrench and tighten. Note: Be careful not to over tighten. Over tightening may cause housing to crack.
4. Next mount Break-Away Switch close enough on trailer that cable can be attached to vehicle.
5. Follow "Wiring Installations".

OPTION 2-

SELF-TAPPING SCREW MOUNTING INSTRUCTIONS:

1. Locate secure surface on trailer to mount Break-Away Kit.
2. With flat washers on each screw, route through provided holes in each corner of the Break-Away Kit plastic casing. Use screwdriver or drill and secure to trailer. DO NOT drill holes in trailer frame. This will weaken the frame and void your trailer warranty.
3. Next mount Break-Away Switch close enough on trailer that cable can be attached to vehicle.
4. Follow "Wiring Installations".

WIRING INSTRUCTIONS:

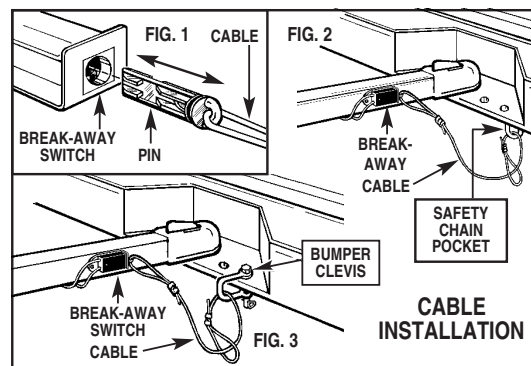
1. Splice one blue wire of the Break-Away Switch to the electric brake wire coming from the trailer side connector (A).
2. Connect other blue wire of Break-Away Switch to the blue wire (labeled "Brake") from the Break-Away Box (B). (Note: Blue wires are interchangeable on the Break-Away Switch.)
3. Splice white wire from Break-Away Box to existing ground wire on trailer or ground directly to trailer frame (C).
4. Splice black wire on Break-Away Box to trailer 12-Volt auxiliary power lead (D). This will charge the Break-Away battery when vehicle is in use. (Note: Black wire is found only on Model 20001 and 20004.)
5. Test unit by pulling firmly on cable of Break-Away Switch. Battery will activate brakes. (Note: Do not use this kit as a parking brake.) Battery should be charged and tested prior to each trailer outing.

OPERATING INSTRUCTIONS:

1. Test your Break-Away Kit before each outing as described in Step 5 of the wiring instructions.
2. Once tested, Break-Away Switch cable should be secured to vehicle bumper or frame. The cable can be attached many different ways. Two of the most common are: (1) Pull the pin out of the Break-Away Switch (Fig. 1) and route through safety chain pocket (Fig. 2), then through cable loop and reconnect pin. (2) Attach cable loop to a bumper clevis (Fig. 3). Do not loop cable over hitch ball, cable may bounce off while vehicle is moving. **Note:** Plunger pin must be facing the rear of the vehicle directly behind where you secure the cable on your vehicle. Any other angle may cause Break-Away Switch failure.

Break-Away Kit Accessories

- #20005 Break-Away Switch Complete with Cable
- #20006 Box and Hardware
- #20009 Replacement Break-Away Switch Cable and Pin
- #20007 Break-Away Kit Charger



Look for other trailer wiring products

- Vehicle T-Connectors
- Converters
- Adapters
- Brake Controls

YOUR TRAILER MUST HAVE OPERATIONAL ELECTRICAL BRAKES TO USE THIS PRODUCT.

SEE WIRING DIAGRAMS ON REVERSE SIDE. →

Break-Away System 20

DIAGRAM WITH CHARGER (Part No's. 20001 & 20004)

DIAGRAMA CON EL CARGADOR (Núm. de Partes 20001 & 20004)

DIAGRAMME AVEC CHARGEUR (N^{os} de pièce 20001 et 20004)

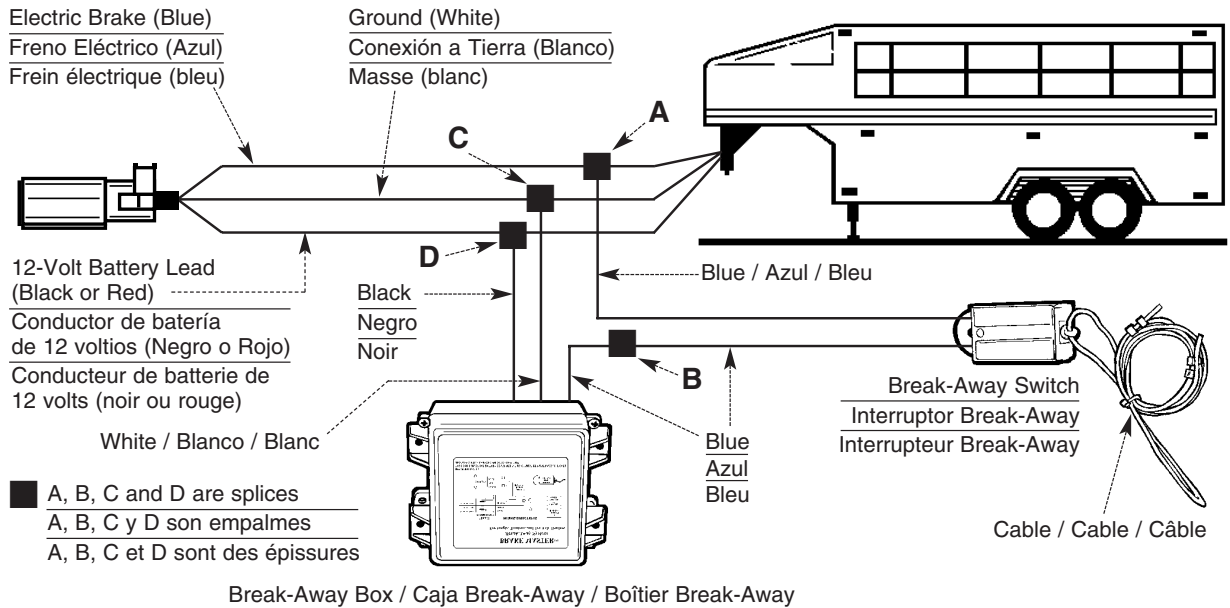
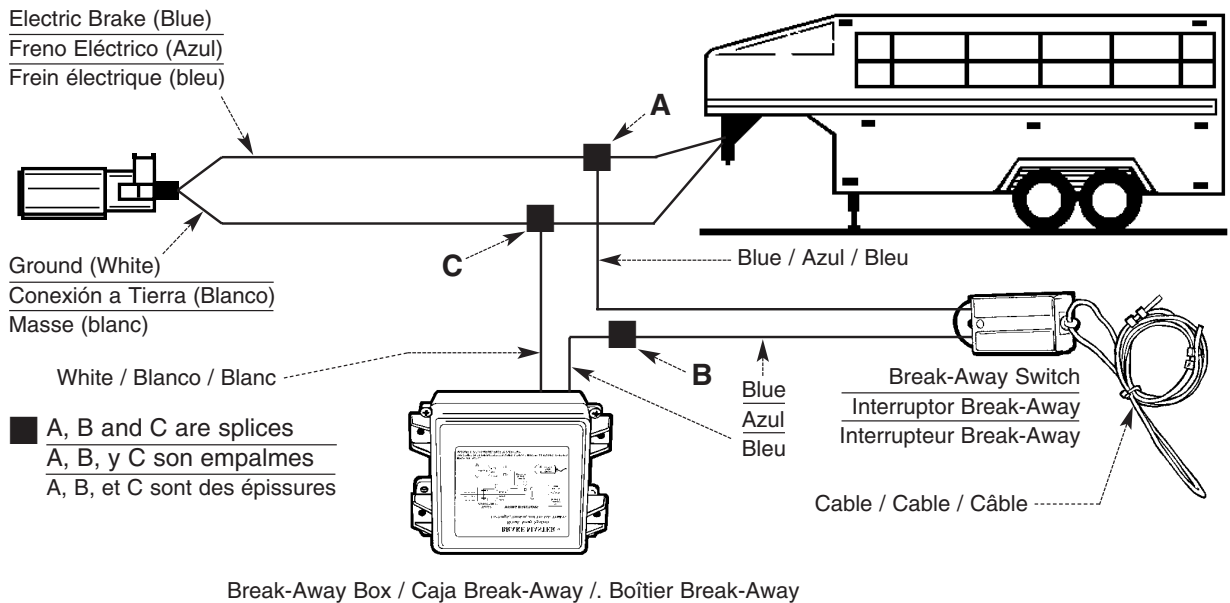


DIAGRAM WITHOUT CHARGER (Part No's. 20002 & 20003)

DIAGRAMA SIN EL CARGADOR (Núm. de Partes 20002 & 20003)

DIAGRAMME SANS CHARGEUR (N^{os} de pièce 20002 et 20003)



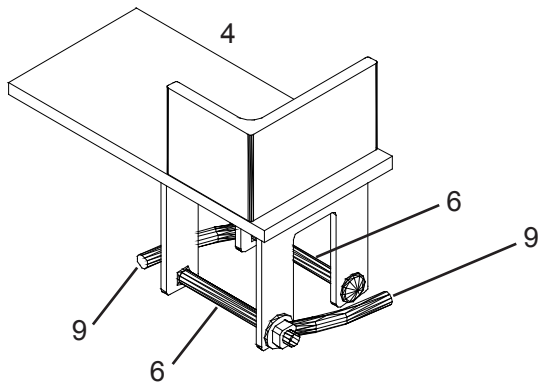
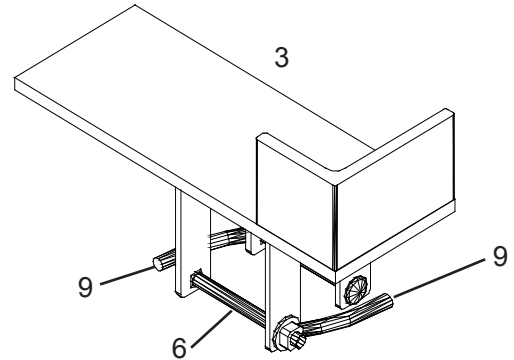
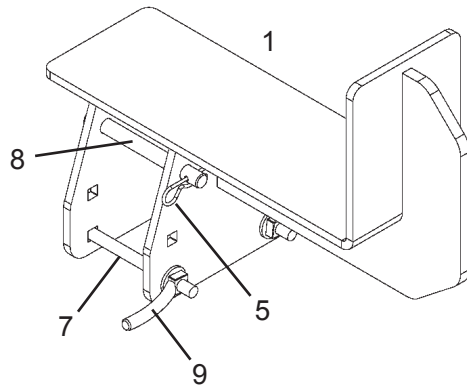
Note: Wire By Function Only. Color Coding is Not Standard Among Manufacturers.

Nota: Instale el cableado por su función solamente. Código de color no es la norma entre todos los fabricantes.

Remarque: Câbler uniquement selon les fonctions. Le code de couleur peut varier d'un constructeur à l'autre.

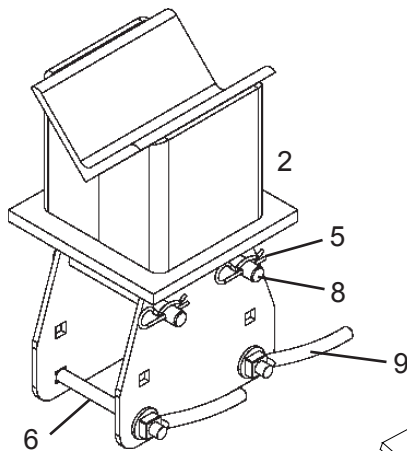
QUESTIONS - CALL / PREGUNTAS - LLAME AL / QUESTIONS - APPELER AU 1-800-835-0129

Head Mount Options and Breakdown

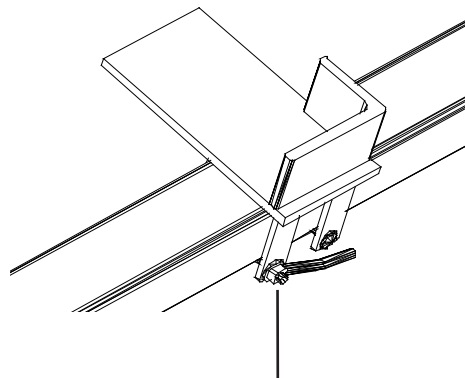


Ref No.	Part No.	Qty	Description
1	9H000013	1	Draper Head Mount Assembly
2	9H000014	1	Shelbourne Mounting Kit
3	50005232	1	Left Head Mount (Model 2000)
-	50005231	1	Right Head Mount (Model 2000)
4	50005201	1	Left Head Mount (Cat)
-	50005200	1	Right Head Mount (Cat)
5	1AF052BBAH0	2	1/8" x 2-1/2" Bridge Pin
6	1AFC04HEAH0	2	1/2"-13 x 5-1/2" Carriage Bolt
7	1AFC04HFA00	2	1/2"-13 x 6" Carriage Bolt
8	1AFZ06JEAD0	2	5/8" x 5-1/4" Clevis Pin - Short
9	1AFZ29H0000	2	1/2"-13 Handle Nut

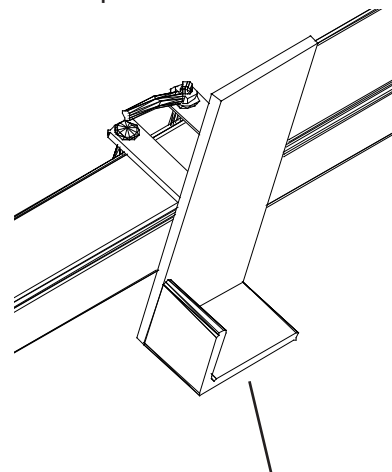
Please order replacement parts by Part Number and Description.



NOTE: Parts #5 & #6 listed in the parts box are for one (1) head mounting assembly. You must specify right or left when you order replacement parts.



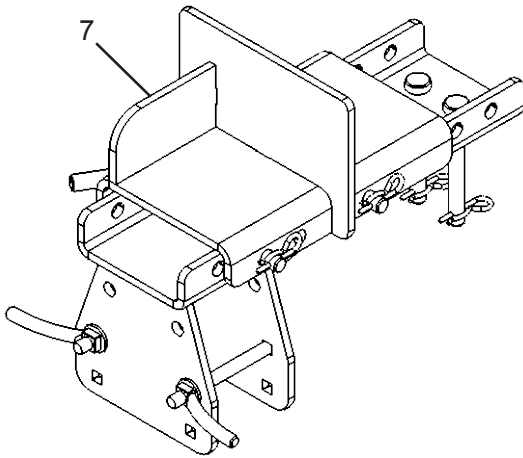
NOTE: Mount Bracket #3 & #4 as shown for corn heads



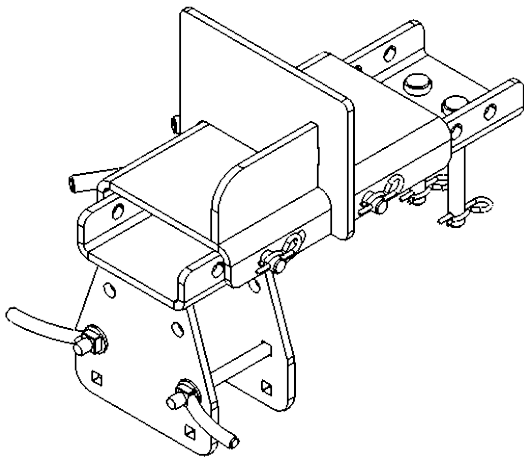
NOTE: Mount Brackets #3 & #4 as shown for platform heads

Adjustable Slider Mounting Bracket

Right Mounting Bracket - 9

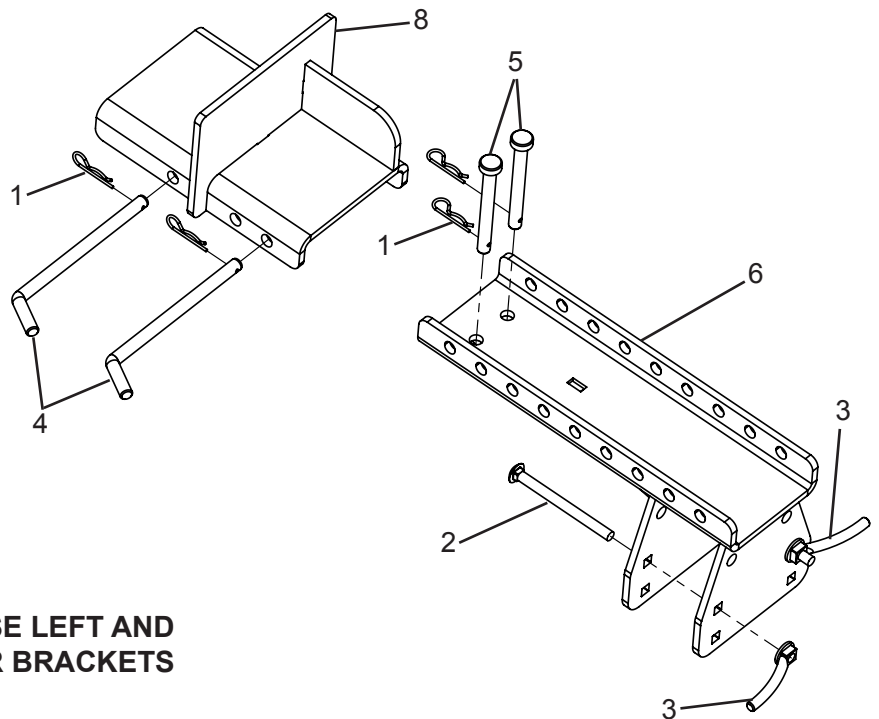


Left Mounting Bracket - 10



Ref No.	Part Number	Qty	Description	Unit Number
1	1AF052BBAH0	4	1/8" X 2-1/2" Bridge Pin	
2	1AFC04HEAH0	2	1/2" X 5-1/2" Carriage Bolt Plated	
3	1AFZ29H0000	2	1/2"-13 Handle Nut	
4	1AFZ51JHAH0	2	5/8" X 8-1/2" Bent Pin Long	
5	1AFZ06JEAD0	2	5/8" X 5-1/4" Clevis Pin - Short	
6	5H000153	1	HT Adjustable Slider - Draper Base Assy	9830-
7	5H000009	1	Simple Slider - Top Right Assembly	
8	5H000010	1	Simple Slider - Top Left Assembly	
9	9H000005	1	Simple Slider - Right Mounting Bracket	
10	9H000006	1	Simple Slider - Left Mounting Bracket	

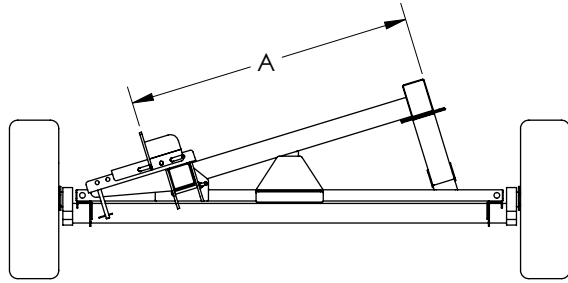
Please order replacement parts by Part Number and Description.



⚠ WARNING DO NOT USE LEFT AND RIGHT ADJUSTABLE SLIDER BRACKETS WITH 616C OR 618C HEADS

Adjustable Slider Bracket 23

Adjustable Slider Mounting Bracket

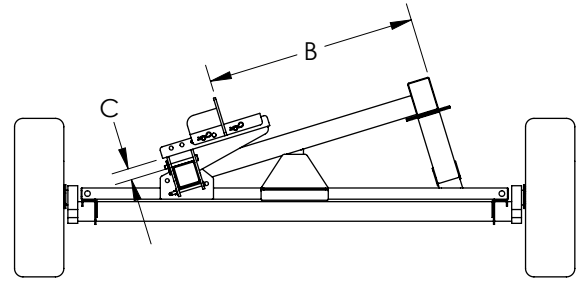


Position #1
End View

Position #1

This is suggested for use with corn heads and draper heads. Notice the Slider-Base Assembly points toward the left side of the transporter. The head will rest against the top slider assembly bracket and on the top rail of the header transport. Adjust the brackets according to dimension "A" and the reference chart provided below.

Position #1 has the brackets shown in the lowered position, which allows the transporter to be utilized for older models of heads and combines. Locate heads so the stalk rollers are to the left of the top rail and there is clearance between the left tire and drive shafts.



Position #2
End View

Position #2

This is suggested for use with platform type heads. Notice the Slider-Base Assembly points toward the right side of the transporter. The head will rest against the top slider assembly bracket and on the top rail of the header transport. Adjust the brackets according to dimension "B" and the reference chart provided below.

Position #2 has the brackets shown in the raised position. This is illustrated by dimension "C". The brackets are pinned 2 in (5 cm) higher to prevent floating arms on the bottom of platforms from resting on the frame of the transport. This also allows corn head to be raised up and create more clearance between PTO shafts and transport tires. Locate skid shoes so they rest on the top rail.

Brand	Model	Type	"A" Dim.
Gleaner	830 Hug	Corn Head	36.5"(93cm)
Gleaner	3000	Corn Head	52"(132cm)
Harvestec	630 & 830	Corn Head	52"(132cm)
IH	944	Corn Head	42"(107cm)
IH	1063	Corn Head	44"(112cm)
IH	2208, 2212	Corn Head	56"(142cm)
JD	643, 843	Corn Head	52"(132cm)
JD	612FC	Corn Head	54"(137cm)
JD	693, 893, 1293	Corn Head	54"(137cm)
JD	894	Corn Head	56"(142cm)
JD	606c, 608c, 612c, 616c, 618c	Corn Head	54"(137cm)
MF	863 & 883	Corn Head	48"(122cm)
MF	884	Corn Head	52"(132cm)

Brand	Model	Type	"B" Dim.
JD	936D	Draper	56"(142cm)
JD	625D	Draper	56"(142cm)
JD	630D	Draper	56"(142cm)
JD	635D	Draper	56"(142cm)
JD	640D	Draper	56"(142cm)
JD	635FD	Draper	50"(127cm)
JD	640FD	Draper	50"(127cm)
JD	645FD	Draper	50"(127cm)

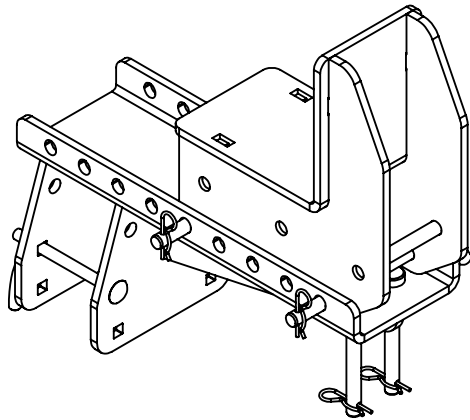
Brand	Model	Type	"B" Dim.
Cat	F530	Platform	38.5"(98cm)
Gleaner	550	Platform	36.5"(93cm)
Gleaner	320, 800, 8000	Platform	38.5"(98cm)
IH	1020, 2020	Platform	36.5"(93cm)
JD	935	Platform	36.5"(93cm)
JD	220	Platform	36.5"(93cm)
JD	920, 925	Platform	36"(91cm)
JD	625F, 630F, 635F	Platform	36"(91cm)
JD	930F	Platform	36"(91cm)
JD	620R, 625R, 630R	Platform	36"(91cm)
MF	8000	Platform	38.5"(98cm)
NH	74c	Platform	38.5"(98cm)
NH	973	Platform	42.5"(108cm)
NH	740	Platform	42.5"(108cm)

NOTE Dimensions in these tables are for reference only. Due to model changes and aftermarket equipment, the brackets may have to be adjusted to ensure the header will mount properly on the transport.

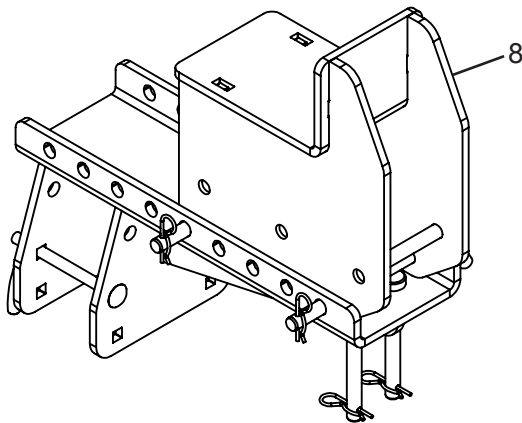
Adjustable Slider Bracket 24

Draper & Stalk Slider Mounting Bracket

Draper Adjustable Slider Mounting Bracket - 9

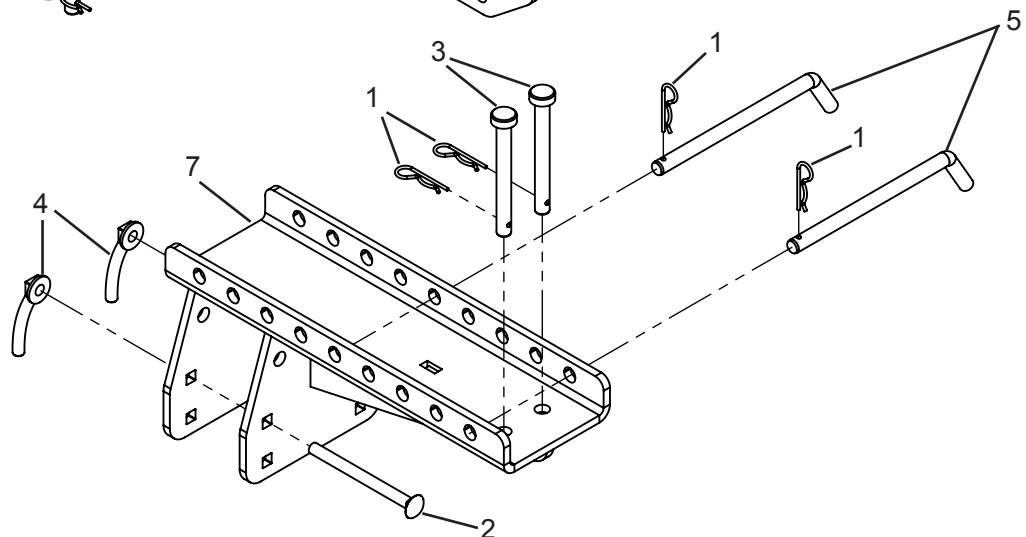


Adjustable Slider Stalk Bracket - 10



Ref No.	Part Number	Qty	Description
1	1AF052BBAH0	4	1/8" X 2-1/2" Bridge Pin
2	1AFC04HFA00	2	1/2"-12 X 6" Carriage Bolt Plated
3	1AFZ06JEAD0	2	5/8" x 5-1/4" Clevis Pin - Zinc Plated
4	1AFZ29H0000	2	1/2"-13 Handle Nut
5	1AFZ51JHAH0	2	5/8" X 8-1/2" Bent Pin Long
6	5H000152	1	HT Adjustable Slider - Draper Top Assy
7	5H000153	1	HT Adjustable Slider - Draper Base Assy
8	5H000293	1	HT Stalk Bracket, Adjustable Slider
9	9H000035	1	HT Draper Adjustable Slider Mounting Bracket
10	9H000067	1	HT Adjustable Slider Stalk Bracket

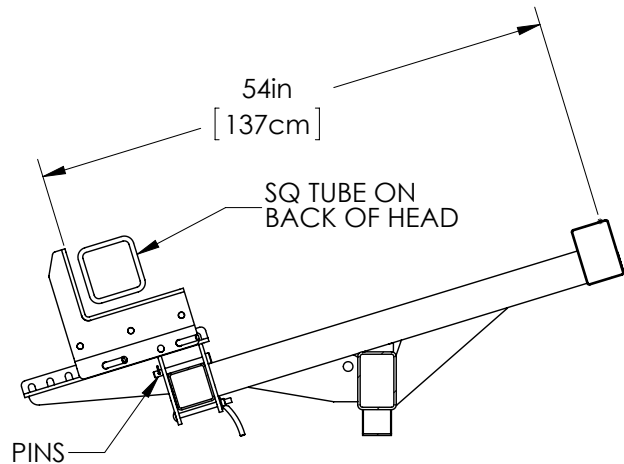
Please order replacement parts by Part Number and Description.



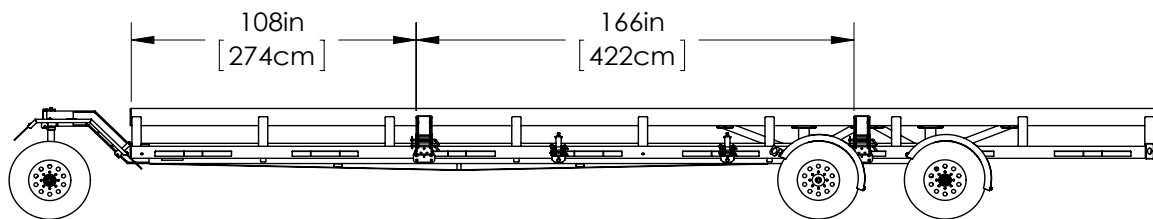
Draper & Stalk Slider Bracket 25

Draper or Stalk Bracket Locations for 616C & 618C

This illustration shows the approximate locations for the Draper Brackets used to mount John Deere 616C & 618C corn heads. The brackets can be raised to allow more clearance between PTO shafts and transport tires. This is done by placing the pins, provided with the bracket, in the upper holes of the clamping plates and resting the pins on the bottom bed rail. The picture to the right shows a bracket in the raised position. The brackets should be adjusted, as needed, so the skid shoes on the head rest on the top bed rail.

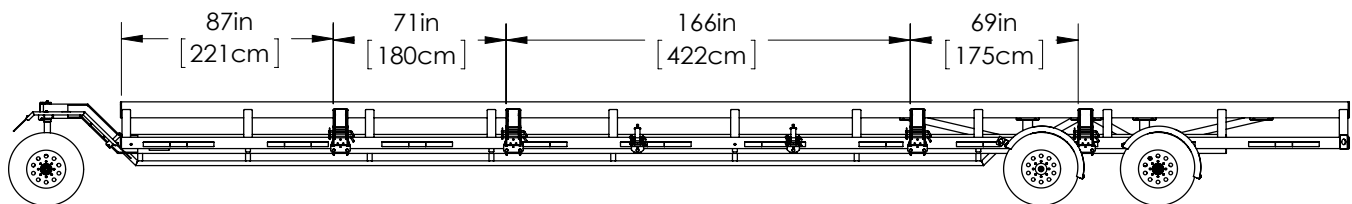


NOTE Dimensions on this page are for reference only. Due to model changes and aftermarket equipment, the brackets may have to be adjusted to ensure the header will mount properly on the transport.



M32.HD (618C)

⚠ WARNING 2 DRAPER OR STALK BRACKETS MUST BE USED FOR 618C CORN HEADS



M42.HD (616C)

⚠ WARNING 4 DRAPER OR STALK BRACKETS MUST BE USED FOR 616C CORN HEADS

⚠ WARNING DO NOT USE LEFT AND RIGHT ADJUSTABLE SLIDER BRACKETS WITH 616C OR 618C HEADS

Header Alignment Tape

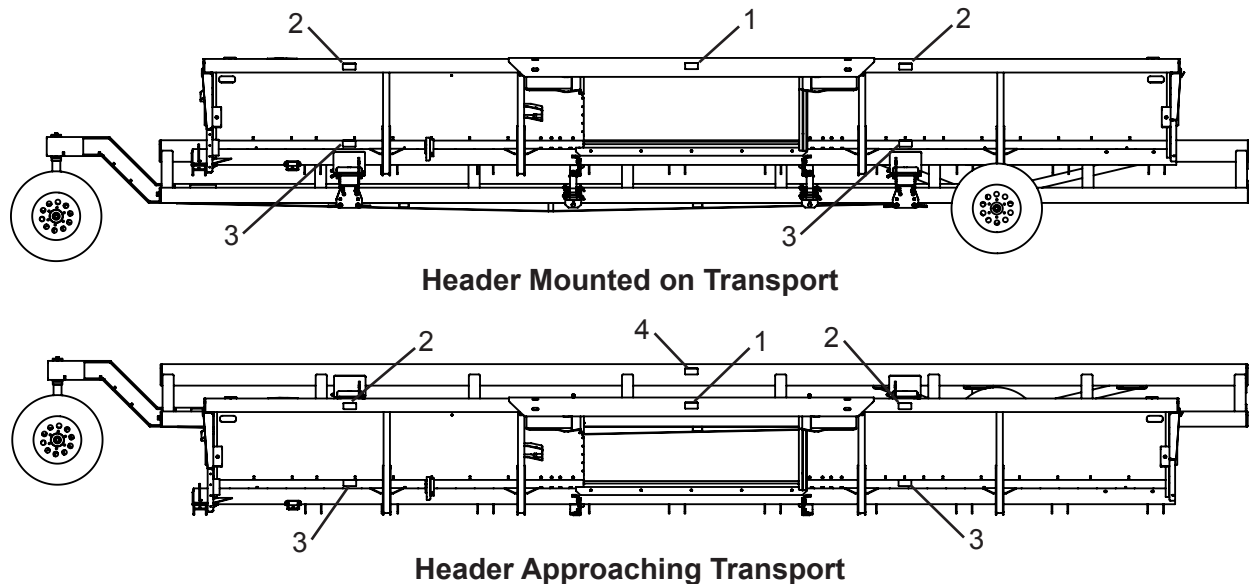
There are 5 strips of yellow conspicuity tape, 2 in x 9 in, part number 1AQBL073000, enclosed in the manifest holder with the Operator's Manual. This tape can be added to the header and transport to aid in aligning the header when mounting it on the transport.

Once the brackets have been set in the desired location and the header mounted on the transport, place a piece of tape in the following locations:

1. Center of header at the top of the feeder house.
2. Top of the header centered above each bracket.
3. Bottom of the header centered above each bracket.
4. Top rail of the transport at the center of the header (may not be the center of the bed, depending on bracket and header placement).

See the figures below for location.

NOTE: The tape can be cut to fit the placement locations.



As the header is moved toward the transport, line up the tape on the top of the header with the tape on the transport and the brackets. The tape at the bottom of the header is then used to ensure that the header is in the proper location for the brackets.

How to install alignment tape:

- Be sure that installation area is clean and dry.
- Decide on exact position before you remove backing film.
- Remove a small portion of backing film.
- Align tape over specified area and carefully press small portion with exposed sticky backing in place.
- Slowly peel back remaining film and carefully smooth remaining portion of tape into place.
- Rub the tape to press it firmly to the surface.

Header Securement



Step 1:

Always position tie-down brackets on bottom rail of transport to create a straight line of pull. (See picture to the left.) Fasten tie-down brackets to bottom rail using carriage bolt and handle nut. Tighten handle nuts to prevent brackets from sliding.

⚠ CAUTION TO PROPERLY SECURE HEADER TO TRANSPORT, BOTH BRACKETS AND STRAPS MUST BE USED.



Step 2:

Remove nylon tie-down strap from ratchet. Feed the tail end through the nylon loop on the opposite end, to create a slipknot around the feeder house bar of the combine header. (See picture to the left.)

Step 3:

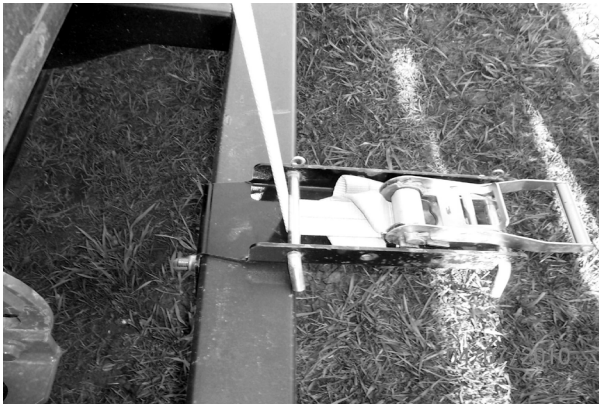
Feed tail end of strap through the drum slot on the ratchet. Pull tail end through tight and ratchet the connection tightly. (See picture to the left.)

⚠ CAUTION BE AWARE OF TRANSPORT WIDTH WHILE TRAVELING ON ROADS AND BEFORE CROSSING BRIDGES.

Operator must comply with all state and local laws governing highway safety regulations while operating on public roads.

Step 4:

Tie-downs are provided long to accommodate different types of headers, and could be cut down and singed, to meet your specific application.



⚠ CAUTION PREVENT NYLON STRAPS FROM CONTACTING AND RUBBING ON SHARP EDGES. REPLACE CUT OR WORN STRAPS BEFORE OPERATING EQUIPMENT.

Step 5:

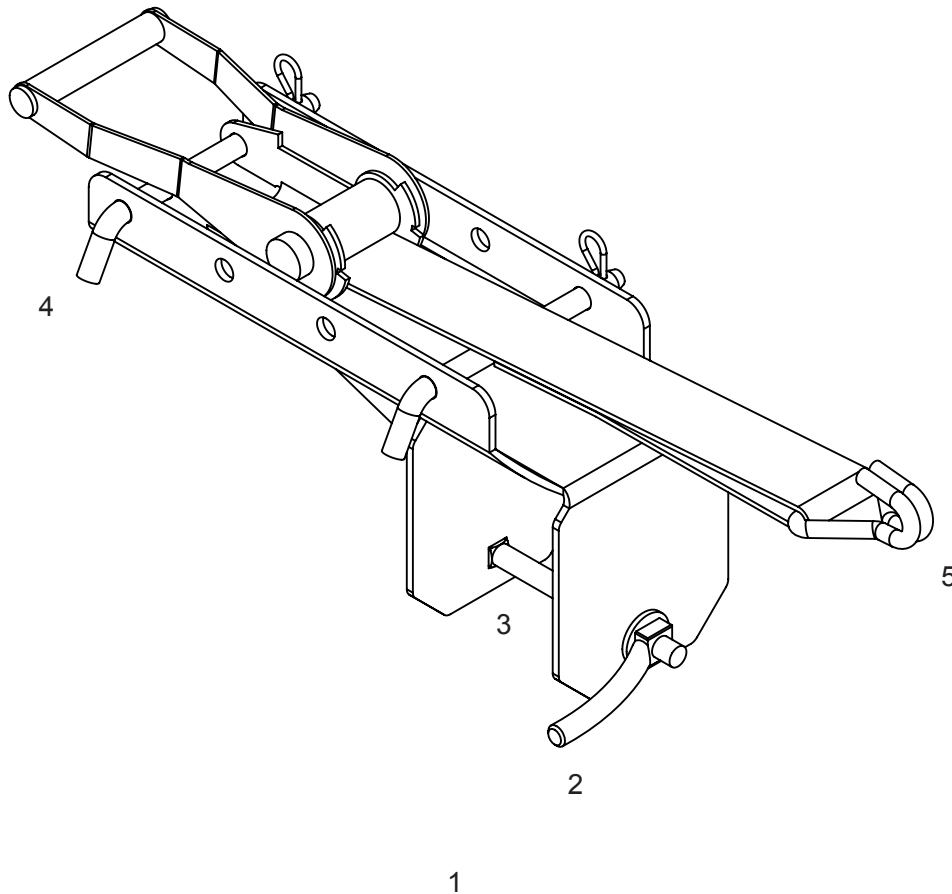
Tie-downs are also provided with a hook to accommodate different types of headers. Hooks can be placed through main frame holes on the header. (See picture to the left.)



Adjustable Tie-Down

Ref No.	Part Number	Qty	Description
1	5H000148	1	HT Adjustable Tie-Down Assembly
2	1AFZ29H0000	1	1/2-13 Handle Nut - Zinc Plated
3	1AFC04HEAH0	1	1/2-13 x 5-1/2" Carr Bolt Pltd
4	1AFZ51HEA00	2	1/2" x 5 Bent Pin w/ Clip - Zinc Plated
5	1AU00000196	1	Ratchet w/ Hook & Looped Strap

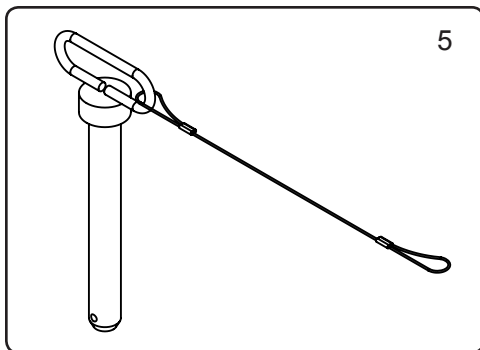
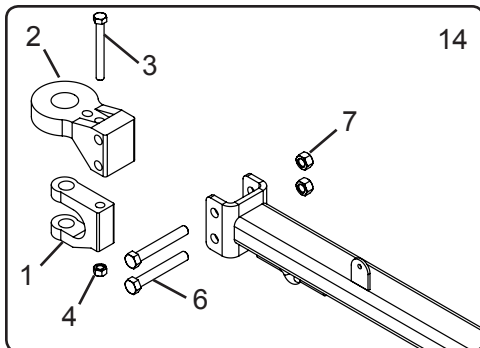
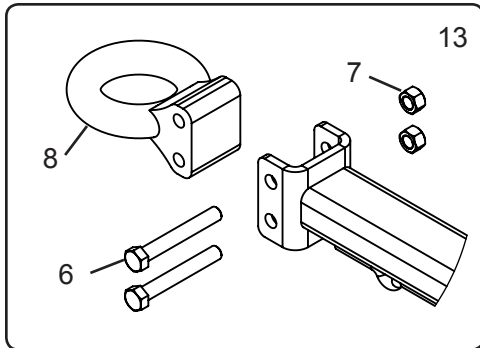
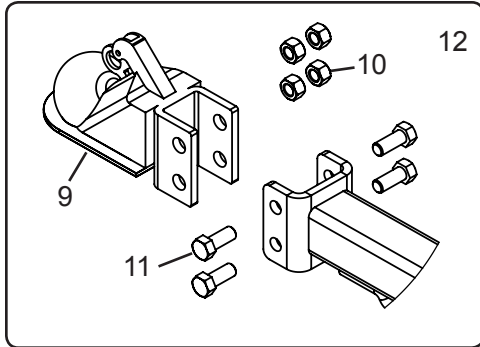
Please order replacement parts by Part Number and Description.



**Reference previous page for
header securement recommendations.**

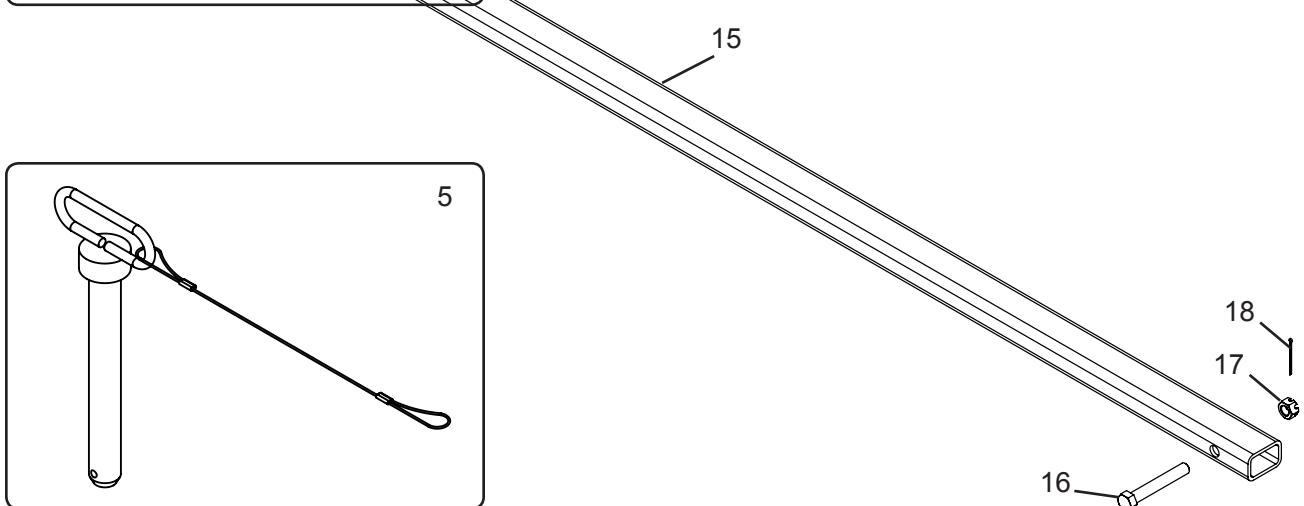
Adjustable Tie-Down 29

Standard Tongue Parts Breakdown



Ref No.	Part Number	Qty	Description
1	1ACB0107VR0	1	1" Clevis, CAT1 CAST 80-5506
2	1ACB0126VR0	1	Base, Hitch CAT1 CAST 80-55-06
3	1AFC12IDAH8	1	9/16" X 4-1/2" Hex Bolt GR8
4	1AFC18I0008	1	9/16"-12 Hex Center Lock Nut
5	5H000065	1	1" Hitch Pin w/Steel Lanyard
6	1AFF12JDAH1	2	5/8" X 4-1/2" Hex Bolt Fine Thrd GR 8
7	1AFF17J0001	2	5/8"-Fine Thrd Crown Locknut GR 8
8	1ACB0305651	1	3" Lunette Eye Assembly - Demco
9	1ACB0305806	1	2-5/16" Adjustable Ball Coupler, 20k
10	1AFC05J0000	4	5/8" Center Lock Nut
11	1AFC12JAAH8	4	5/8"-11 X 1-1/2" Hex Bolt GR 8
12	5H000045	1	HT Std Tongue w/ 2-5/16" Ball Coupler
13	5H000046	1	HT Std Tongue w/ 3" Pintle Ring
14	5H000044	1	HT Std Tongue w/Clevis Perfect Hitch
15	5H000043	1	HT Std Tongue w/Channel Mount
16	1AFC48LEA05	1	3/4" X 5" Hex Whole @ 4.5625
17	1AFC63L0000	1	3/4"-10 Slotted Hex Nut
18	1AF033CBAD0	1	5/32" X 2-1/4" Cotter Pin

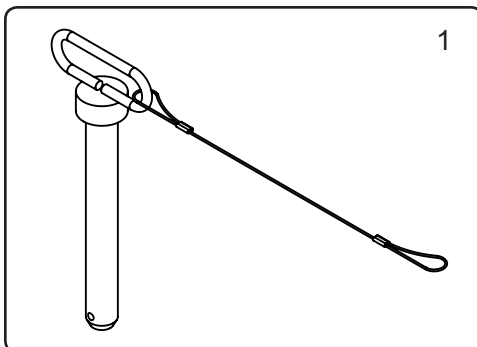
Please order replacement parts by Part Number and Description.



Historical - Standard Tongue Breakdown 30

710 - Telescoping Tongue Parts Breakdown

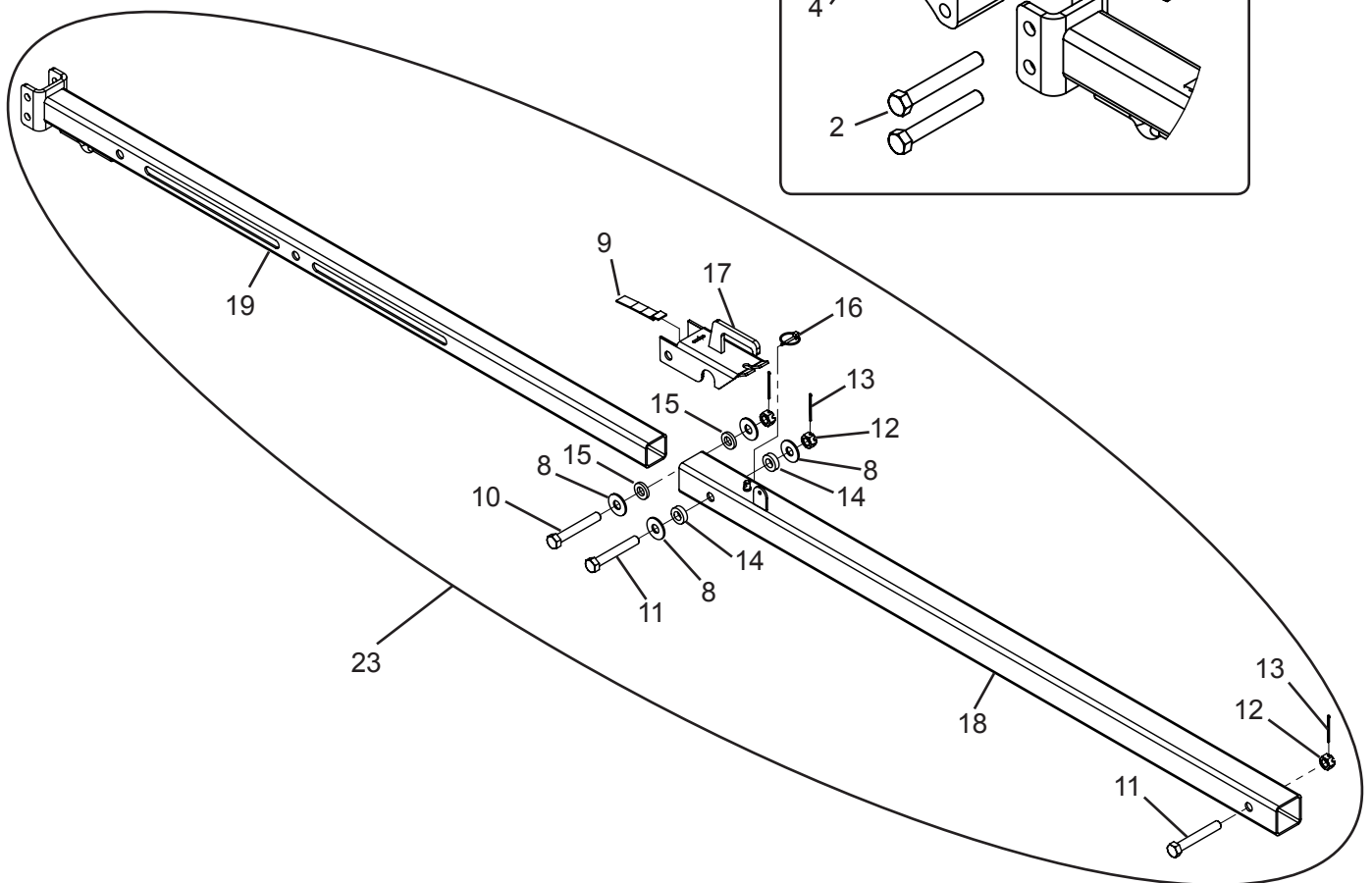
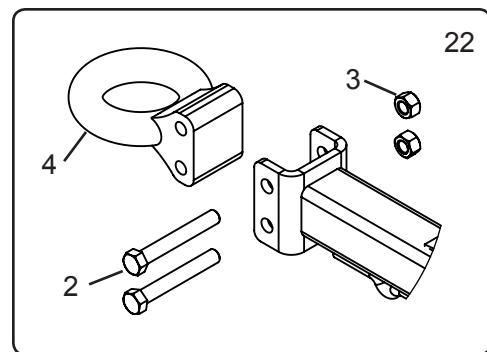
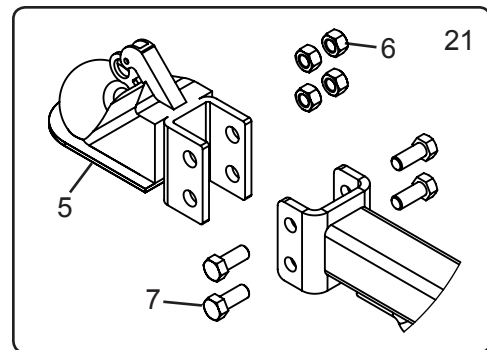
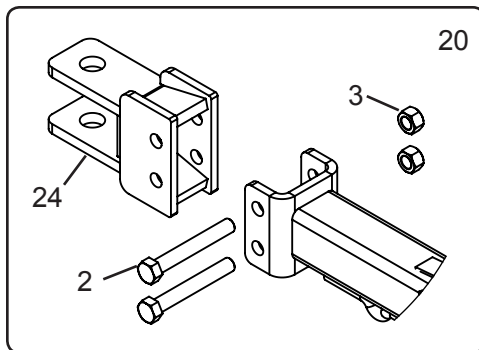
Ref No.	Part Number	Qty	Description
1	5H000065	1	1" Hitch Pin w/Steel Lanyard
2	1AFF12JDAH1	2	5/8" X 4-1/2" Hex Bolt Fine Thrd GR 8
3	1AFF17J0001	2	5/8"-Fine Thrd Crown Locknut GR 8
4	1ACB0305651	1	3" Lunette Eye Assembly - Demco
5	1ACB0305806	1	2-5/16" Adjustable Ball Coupler, 20k
6	1AFC05J0000	4	5/8" Center Lock Nut
7	1AFC12JAAH8	4	5/8"-11 X 1-1/2" Hex Bolt GR 8
8	1AF009L0000	4	3/4" USS Flat Washer, Plated
9	1AF05900000	1	Hitch Spring - Demco
10	1AFC47LEA05	1	3/4" x 5" Hex w/ Hole @ 4.1562
11	1AFC48LEA05	2	3/4" X 5" Hex w/ Hole @ 4.5625
12	1AFC63L0000	3	3/4"-10 Slotted Hex Nut
13	1AF033CBAD0	3	5/32" X 2-1/4" Cotter Pin
14	1AU00000060	2	HT Latch Spacer 2
15	1AU00000061	2	HT Latch Spacer 1
16	1AF034CAA10	1	3/16 X 1 9/16 Lynch Pin
17	5H000037	1	HT Telescoping Latch Assembly
18	5H000038	1	HT Telescoping Outer Tube Assembly, 71.25" LG.
19	5H000039	1	HT Telescoping Inner Tube w/ Channel Mount, 71.75" LG.
20	5H000040	1	HT Tele Tongue w/ Clevis Bolt-On, 20K
21	5H000041	1	HT Tele Tongue w/ 2-5/16" Ball Assembly
22	5H000042	1	HT Tele Tongue w/ 3" Pintle Ring
23	5H000047	1	Telescoping Tongue w/out Coupler, 81.25" LG.
24	5H000166	1	HT Clevis Bolt-On Coupler, 20K Rated



Please order replacement parts by
Part Number and Description.

710 - Telescoping Tongue Breakdown 31

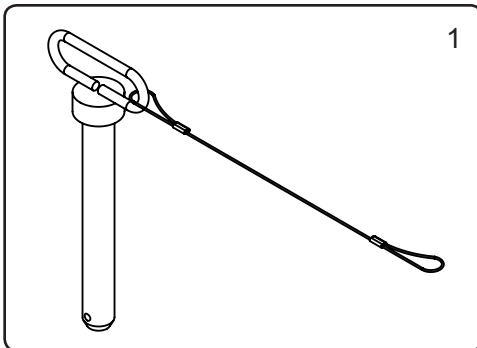
710 - Telescoping Tongue Parts Breakdown



710 - Telescoping Tongue Breakdown 32

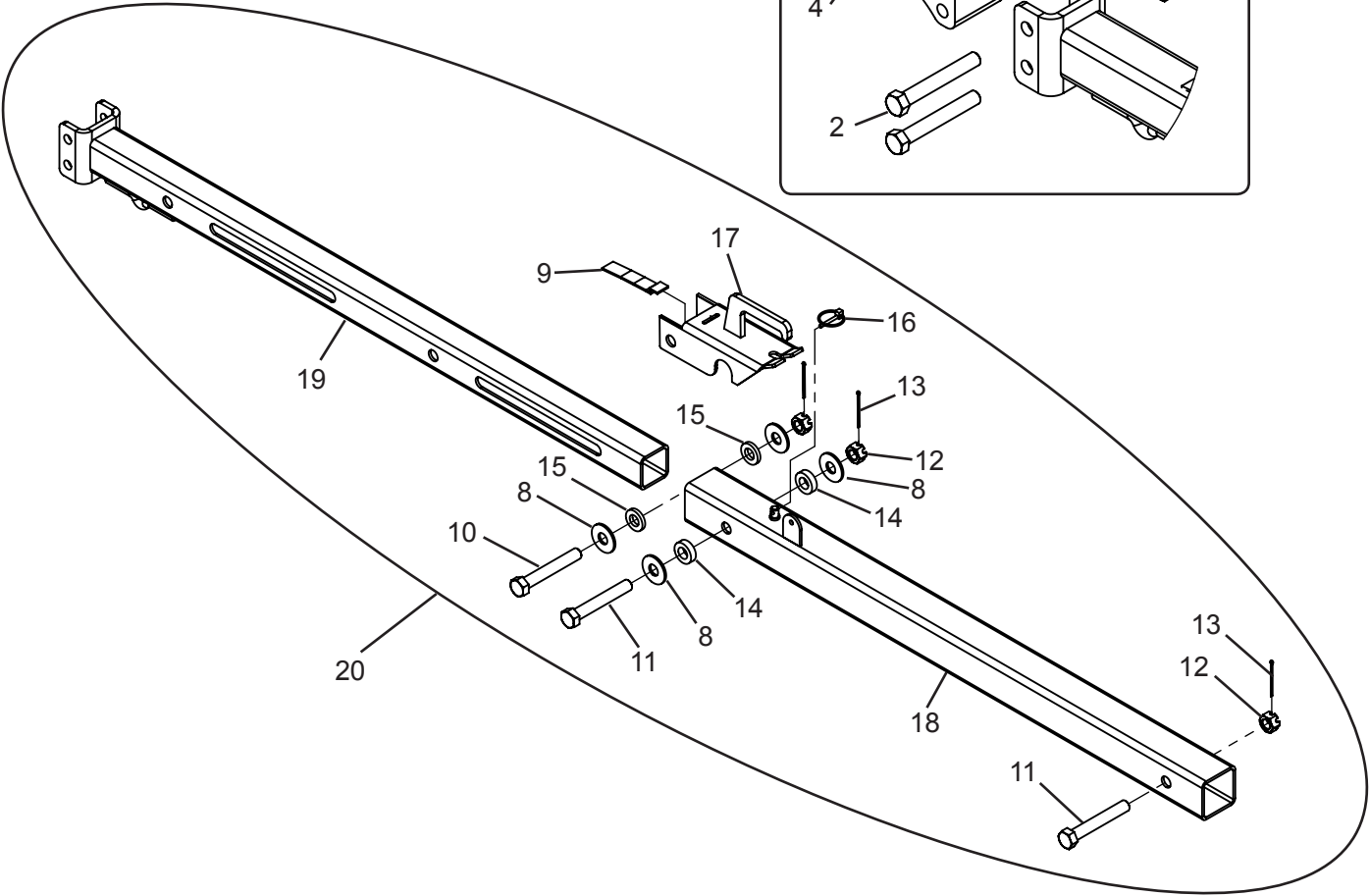
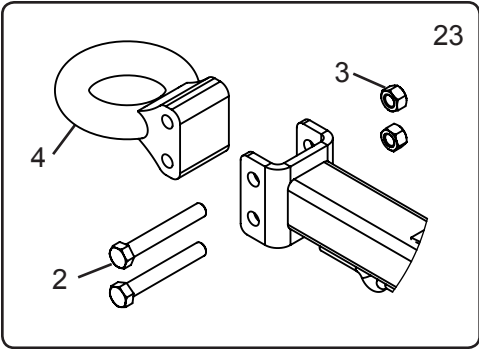
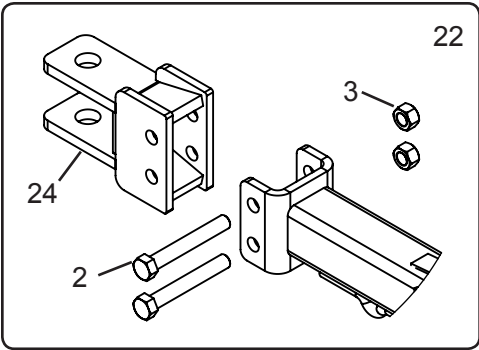
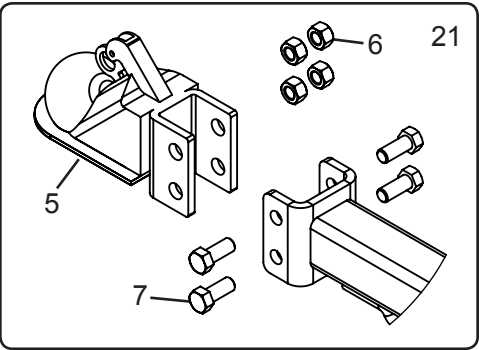
460 - Telescoping Tongue Parts Breakdown

Ref No.	Part Number	Qty	Description
1	5H000065	1	1" Hitch Pin w/Steel Lanyard
2	1AFF12JDAH1	2	5/8" X 4-1/2" Hex Bolt Fine Thrd GR 8
3	1AFF17J0001	2	5/8"-Fine Thrd Crown Locknut GR 8
4	1ACB0305651	1	3" Lunette Eye Assembly - Demco
5	1ACB0305806	1	2-5/16" Adjustable Ball Coupler, 20k
6	1AFC05J0000	4	5/8" Center Lock Nut
7	1AFC12JAAH8	4	5/8"-11 X 1-1/2" Hex Bolt GR 8
8	1AF009L0000	4	3/4" USS Flat Washer, Plated
9	1AF05900000	1	Hitch Spring - Demco
10	1AFC47LEA05	1	3/4" x 5" Hex w/ Hole @ 4.1562
11	1AFC48LEA05	2	3/4" X 5" Hex w/ Hole @ 4.5625
12	1AFC63L0000	3	3/4"-10 Slotted Hex Nut
13	1AF033CBAD0	3	5/32" X 2-1/4" Cotter Pin
14	1AU00000060	2	HT Latch Spacer 2
15	1AU00000061	2	HT Latch Spacer 1
16	1AF034CAA10	1	3/16 X 1 9/16 Lynch Pin
17	5H000037	1	HT Telescoping Latch Assembly
18	5H000143	1	HT Short Telescoping Outer Tube Assembly, 46.75" LG
19	5H000144	1	HT Short Telescoping Inner Tube w/ Channel Mount, 49.75" LG
20	5H000145	1	HT Short Telescoping Tongue w/o Coupler, 54.75" LG
21	5H000041	1	HT Tele Tongue w/ 2-5/16" Ball Assembly
22	5H000042	1	HT Tele Tongue w/ 3" Pintle Ring
23	5H000047	1	Telescoping Tongue w/out Coupler, 81.25" LG.
24	5H000166	1	HT Clevis Bolt-On Coupler, 20K Rated



Please order replacement parts by
Part Number and Description.

460 - Telescoping Tongue Parts Breakdown

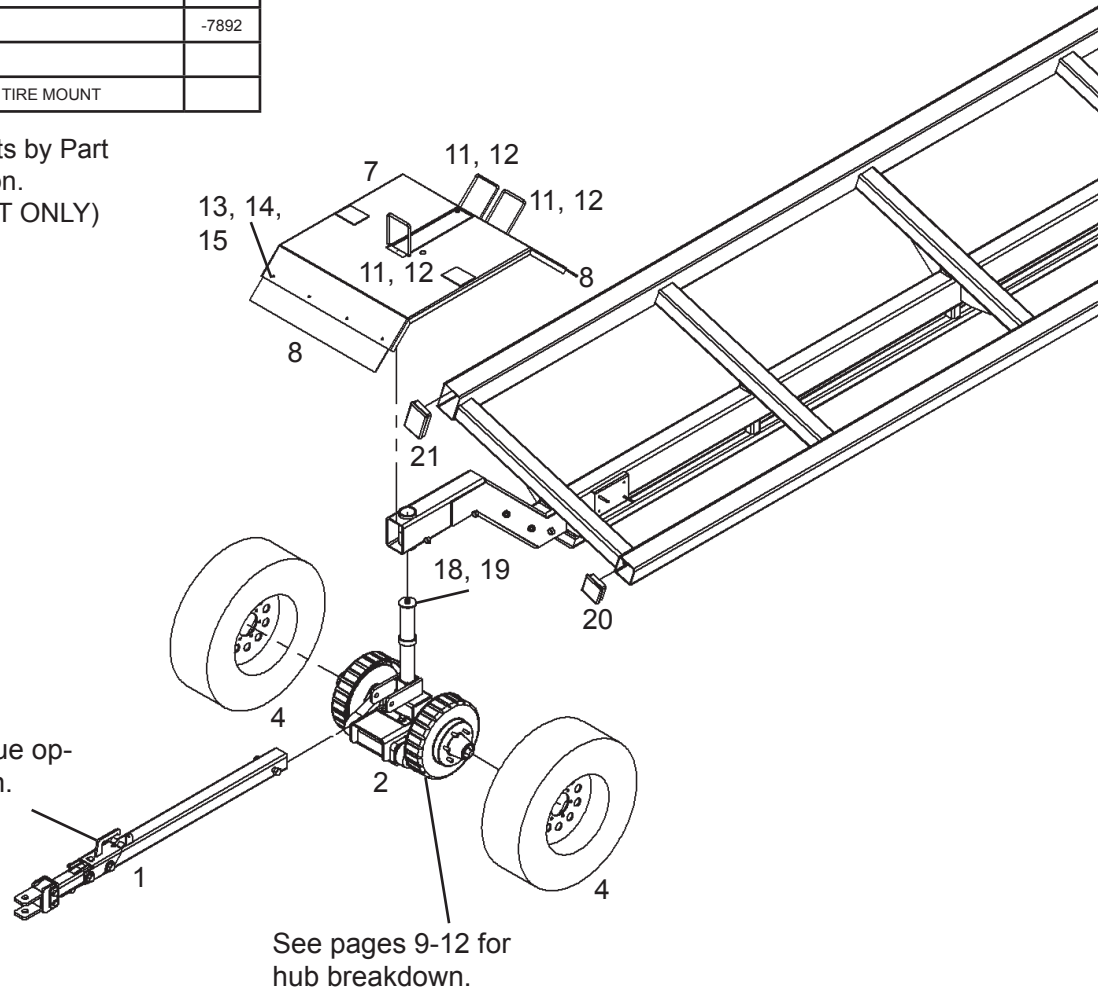


Main Parts Breakdown

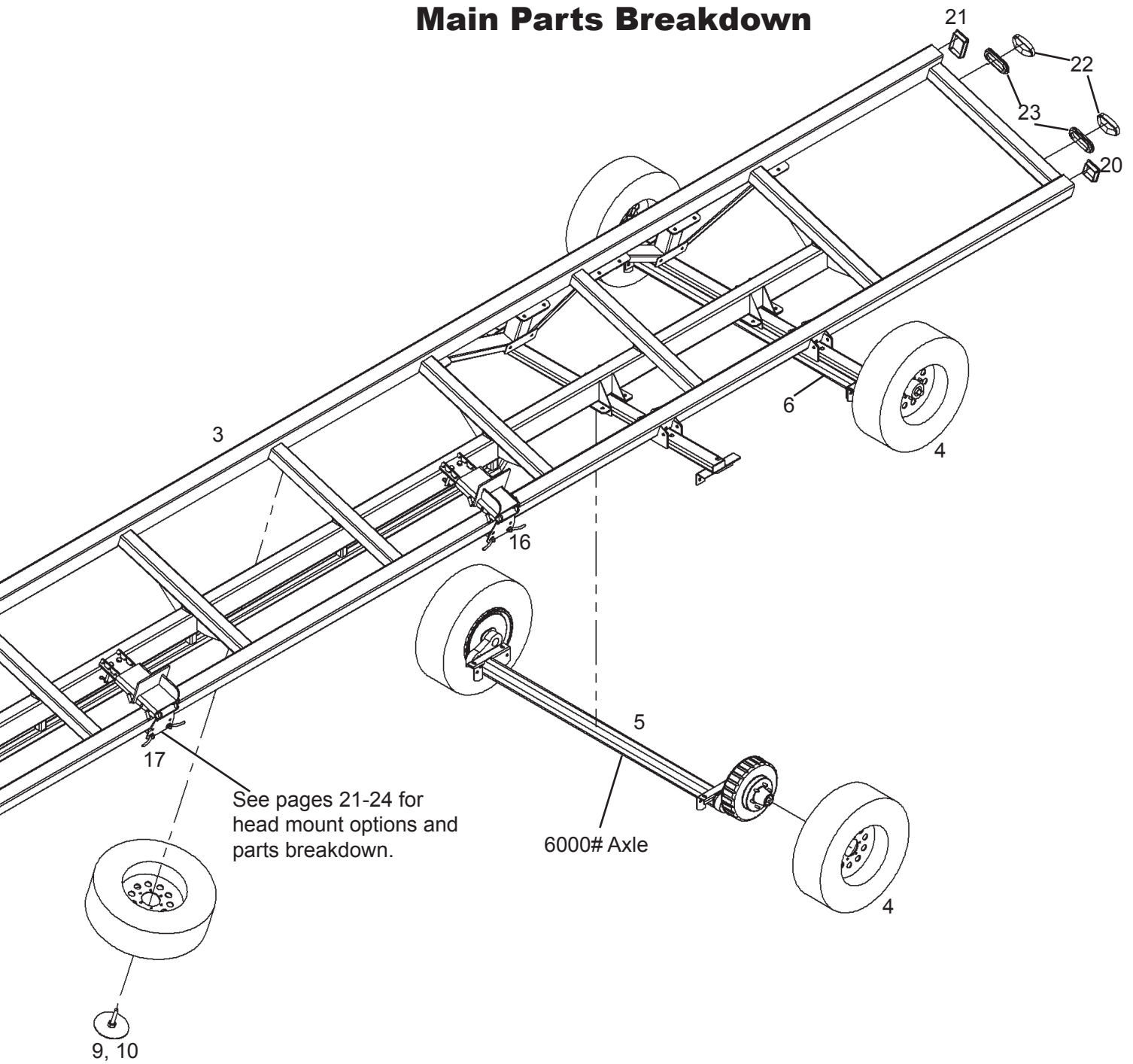
Ref No.	Part Number	Qty	Description	Unit Number
1	5H000147	1	HT TELESCOPING SHORT TONGUE W/ CLEVIS	
2	5H000162	1	HT FRONT SUSPENSION AXLE (W/ BRAKES)	
-	5H000163	1	HT FRONT SUSPENSION AXLE (W/O BRAKES)	
-	5H000167*	1	HT FRONT SUSPENSION, 22.5 DOWN (W/ BRAKES)*	
-	5H000171*	1	HT FRONT SUSPENSION, 22.5 DOWN (W/O BRAKES)*	
-	9H000007	-	20' HEAD TRANSPORT FRAME	
-	9H000008	-	24' HEAD TRANSPORT FRAME	
-	9H000009	-	28' HEAD TRANSPORT FRAME	
-	9H000010	-	32' HEAD TRANSPORT FRAME	
3	9H000011	-	38' HEAD TRANSPORT FRAME	
-	9H000012	-	42' HEAD TRANSPORT FRAME	
-	9H000033	-	48' HEAD TRANSPORT FRAME	-8954
4	1ATCWWH600E	6	225/75R15 ST ON WHT MOD IMP 6B LRE	
5	1AAT66E11PH	1	REAR AXLE (W/ BRAKES)	
6	1AAT66N11PH	1	REAR AXLE IDLER (W/O BRAKES)	
-	1AAT66E15PH*	1	HT REAR AXLE, 22.5 DOWN (W/ BRAKES)*	7746-
-	1AAT66N15PH*	1	HT REAR AXLE, 22.5 DOWN (W/O BRAKES)*	7746-
7	5H000049	1	HT WIDE STANCE FRONT FENDER	-7892
8	1AU00000049	2	MUD FLAP FOR FENDER	-7892
9	5H000057	1	HT SPARE TIRE CARRIER	
10	1AFC12LEAH5	1	3/4" x 5-1/2" BOLT FOR SPARE TIRE MOUNT	

Ref No.	Part Number	Qty	Description	Unit Number
11	1AFC51FFAL0	3	3/8" SQ U-BOLT	-7892
12	1AFC18F0000	6	3/8" NYLOCK NUTS	-7892
13	1AFC12EAA05	8	5/16" x 1" HEX HEAD BOLT	-7892
14	1AFC08E0000	8	5/16" FLANGE NUTS	-7892
15	1AF046EAAH0	8	5/16" x 1-1/2" FENDER WASHER	-7892
16	9H000005	1	SIMPLE SLIDER - RIGHT MOUNTING BRACKET	
17	9H000006	1	SIMPLE SLIDER - LEFT MOUNTING BRACKET	
18	3H000075	1	FRONT END WASHER CAP	
19	1AFC12HAA00	1	1/2" x 1" HEX HEAD BOLT	
-	1AU00000011	1	MANIFEST HOLDER MWW	
20	1AR00000049*	2	3-1/2" x 3-1/2" x 8-11ga PLASTIC TUBE CAP (48' Model)	-8954
20a	1AR00000050	2	4" x 4" x 7ga PLASTIC CAP	
21	1AR00000051	2	4" x 6" x 1/8" PLASTIC TUBE CAP	
-	1AEZ4192000	1	12-V BREAK-AWAY KIT FOR 1-3 AXLE	
22	1AEL6050000	2	RED 6" OVAL-LED LIGHT	
23	1AEL0607003	2	MIDSHIP LIGHT GROMMET	
-	1AU00000063	-	HT RATCHET TIE DOWNS (SLIP-KNOT)	

Please order replacement parts by Part Number and Description.
(* = FOR 32', 38', 42' & 48' HT ONLY)



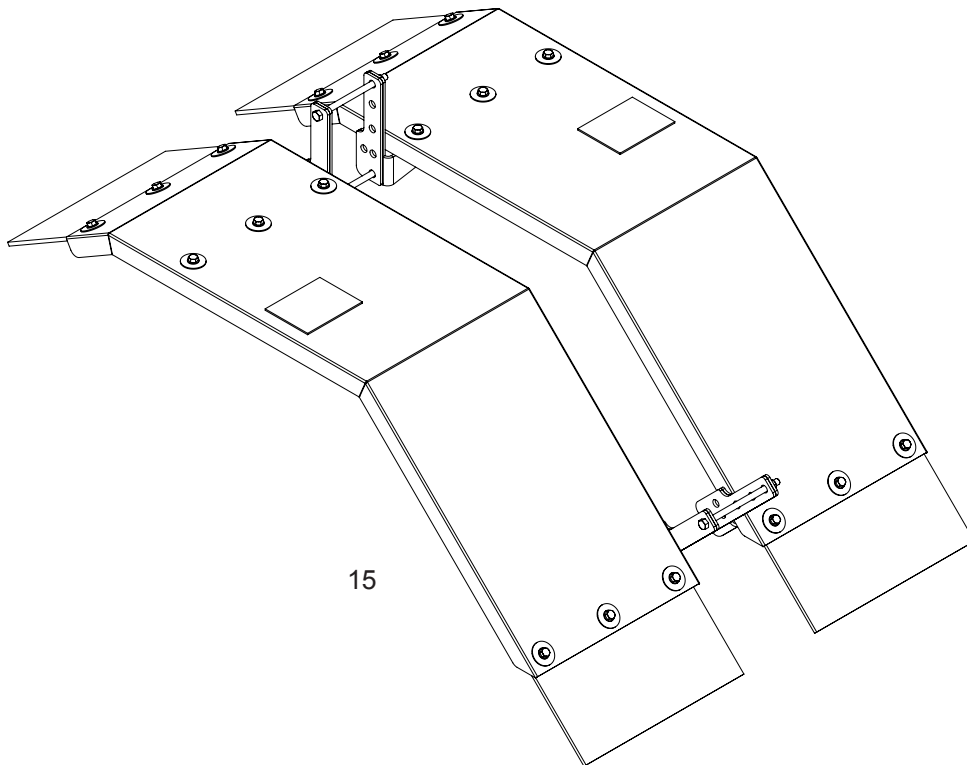
Main Parts Breakdown



Twin Front Fender Parts Breakdown

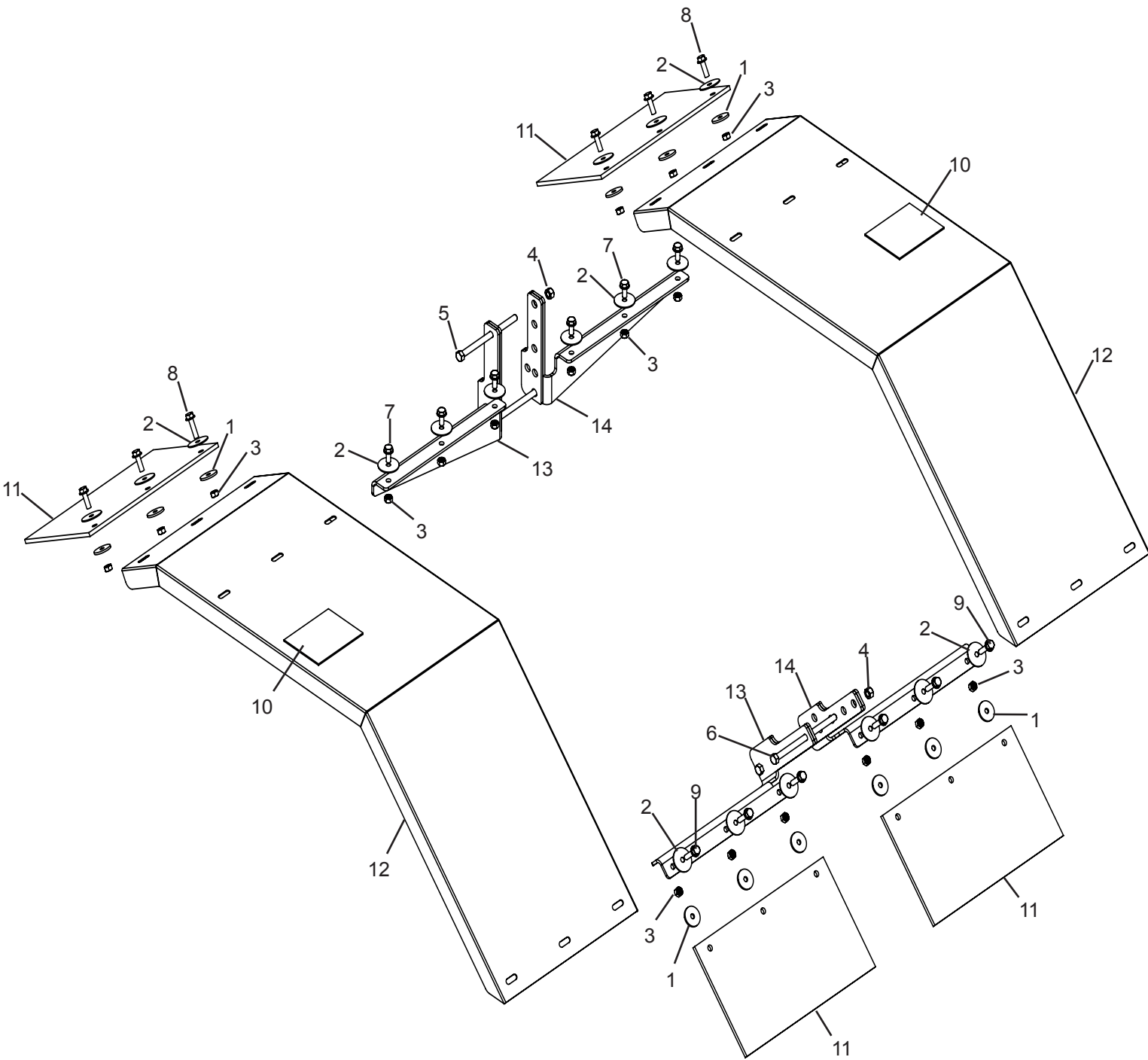
Ref. No.	Part No.	Qty.	Description	Unit Number
1	1AF046EAAD0	12	5/16" x 1-1/4" x .12 Fender Washer	
2	1AF046EAAH0	18	5/16" x 1.5" Fender Washer	
3	1AFC05E0000	18	5/16"-18 Center Lock Nut	
4	1AFC05F0000	4	3/8" Center Lock Nut	
5	1AFC12FEAH5	2	3/8"-16 x 5.5" Gr.5 Hex Bolt	
6	1AFC12FFA05	2	3/8"-16 x 6" Gr.5 Hex Bolt	
7	1AFC37E00L0	6	5/16"-18 x 3/4" Flange Bolt	
8	1AFC37EAA05	6	5/16" x 1" Flange Bolt	
9	1AFC37EAAD5	6	5/16"-18 x 1-1/4" Flange Bolt	
10	1AQL065000	2	Warning - Do Not Step	
11	1AU00000202	4	1/4" x 13" x 7.5" Mudflap	
12	3H000225	2	HT Front Fender	
13	5H000195	2	HT Front Fender Mount Assembly - Driver	
14	5H000196	2	HT Front Fender Mount Assembly - Passenger	
15	5H000185	1	HT Twin Front Fender - Complete	7893-

Please order replacement parts by Part Number and Description.



Twin Front Fender Breakdown 37

Twin Front Fender Parts Breakdown



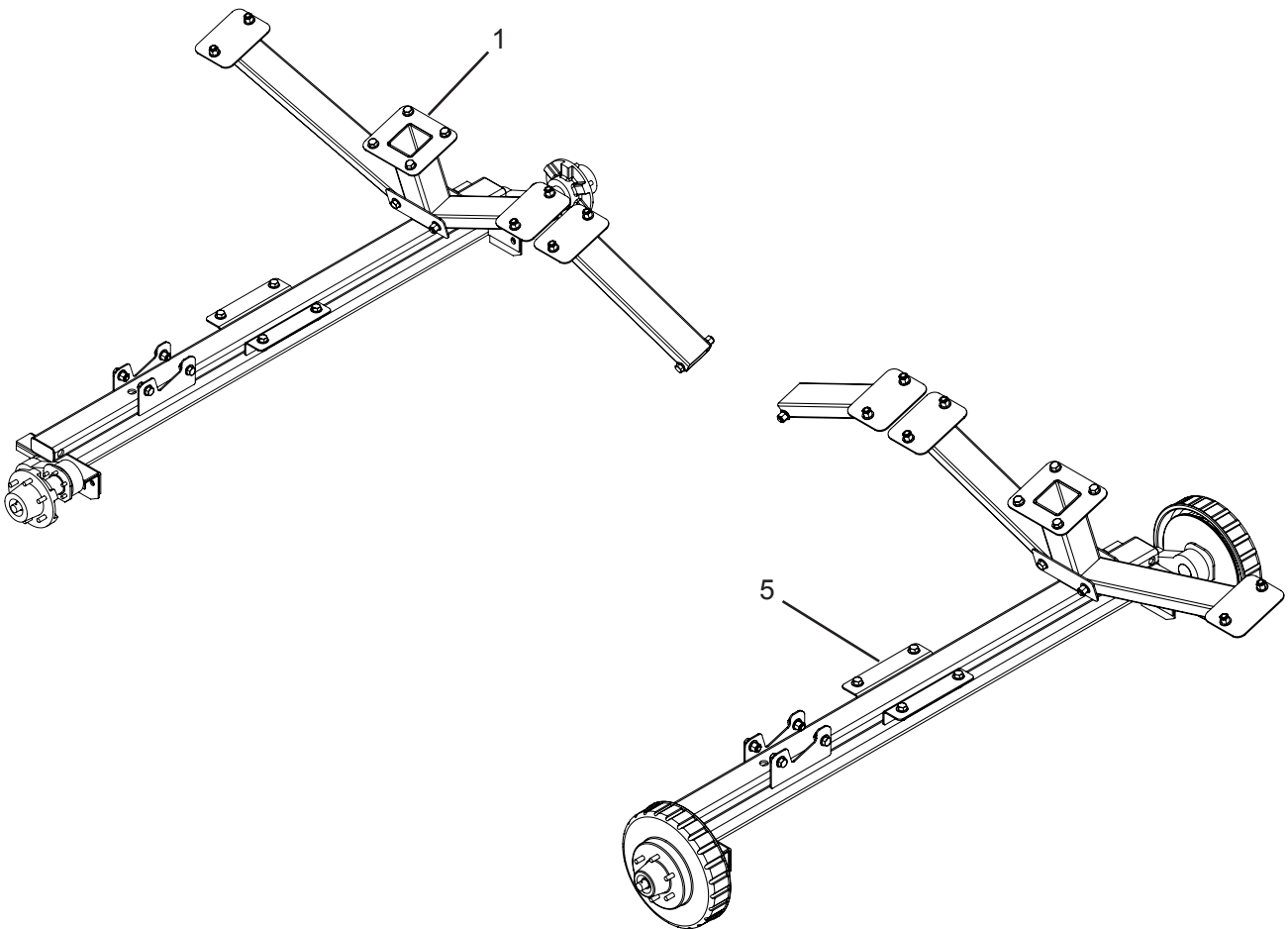
Optional Second Rear Axle Breakdown

22.5 Degree Up Axle

Ref. No.	Part No.	Qty.	Description	Unit Number
1	5H000074	1	HT 32' w/o Brakes	-7745
2*	5H000075	1	HT 32' w/ Brakes & Breakaway Kit	-7745
3*	5H000081	1	HT 32' w/ Brakes, No Breakaway Kit	-7745
4*	5H000078	1	HT 38' w/o Brakes	-7745
5	5H000079	1	HT 38' w/ Brakes & Breakaway Kit	-7745
6*	5H000082	1	HT 38' w/ Brakes, No Breakaway Kit	-7745
7*	5H000151	1	HT (2) Import Radial ST225/75R15 Tires on White Mods	-7745

Please order replacement parts by Part Number and Description.
(* =Not Shown)

Second Rear Axle can be added to 32' and 38' Head Transports ONLY.



Optional Second Rear Axle 39

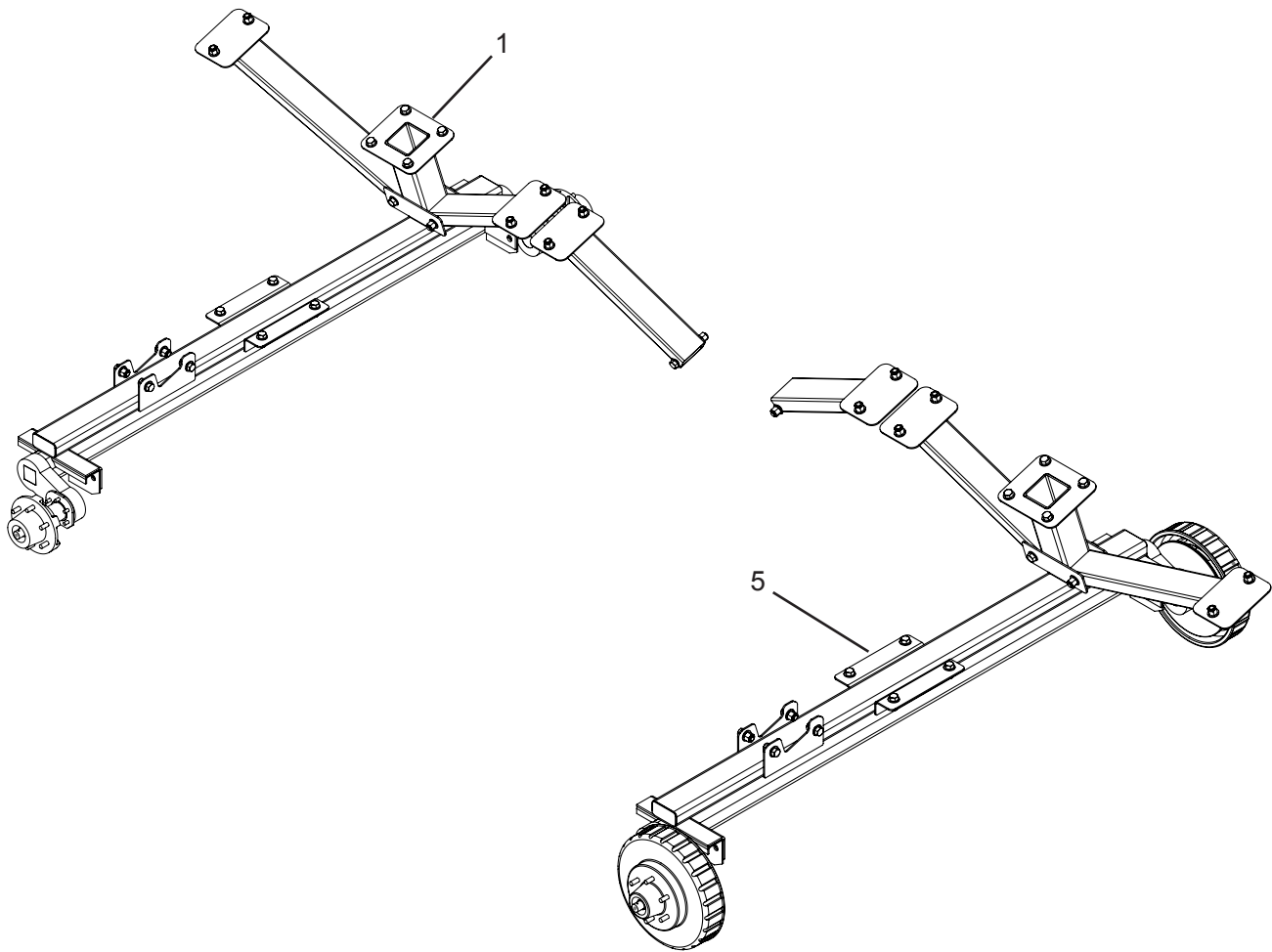
Optional Second Rear Axle Breakdown

22.5 Degree Down Axle

Ref. No.	Part No.	Qty.	Description	Unit Number
1	5H000186	1	HT 32' w/o Brakes	7746-
2*	5H000187	1	HT 32' w/ Brakes & Breakaway Kit	7746-
3*	5H000214	1	HT 32' w/ Brakes, No Breakaway Kit	7746-
4*	5H000188	1	HT 38' w/o Brakes	7746-
5	5H000189	1	HT 38' w/ Brakes & Breakaway Kit	7746-
6*	5H000215	1	HT 38' w/ Brakes, No Breakaway Kit	7746-
7*	5H000151	1	HT (2) Import Radial ST225/75R15 Tires on White Mods	7746-

Please order replacement parts by Part Number and Description.
(* =Not Shown)

Second Rear Axle can be added to 32' and 38' Head Transports ONLY.



Optional Second Rear Axle 40

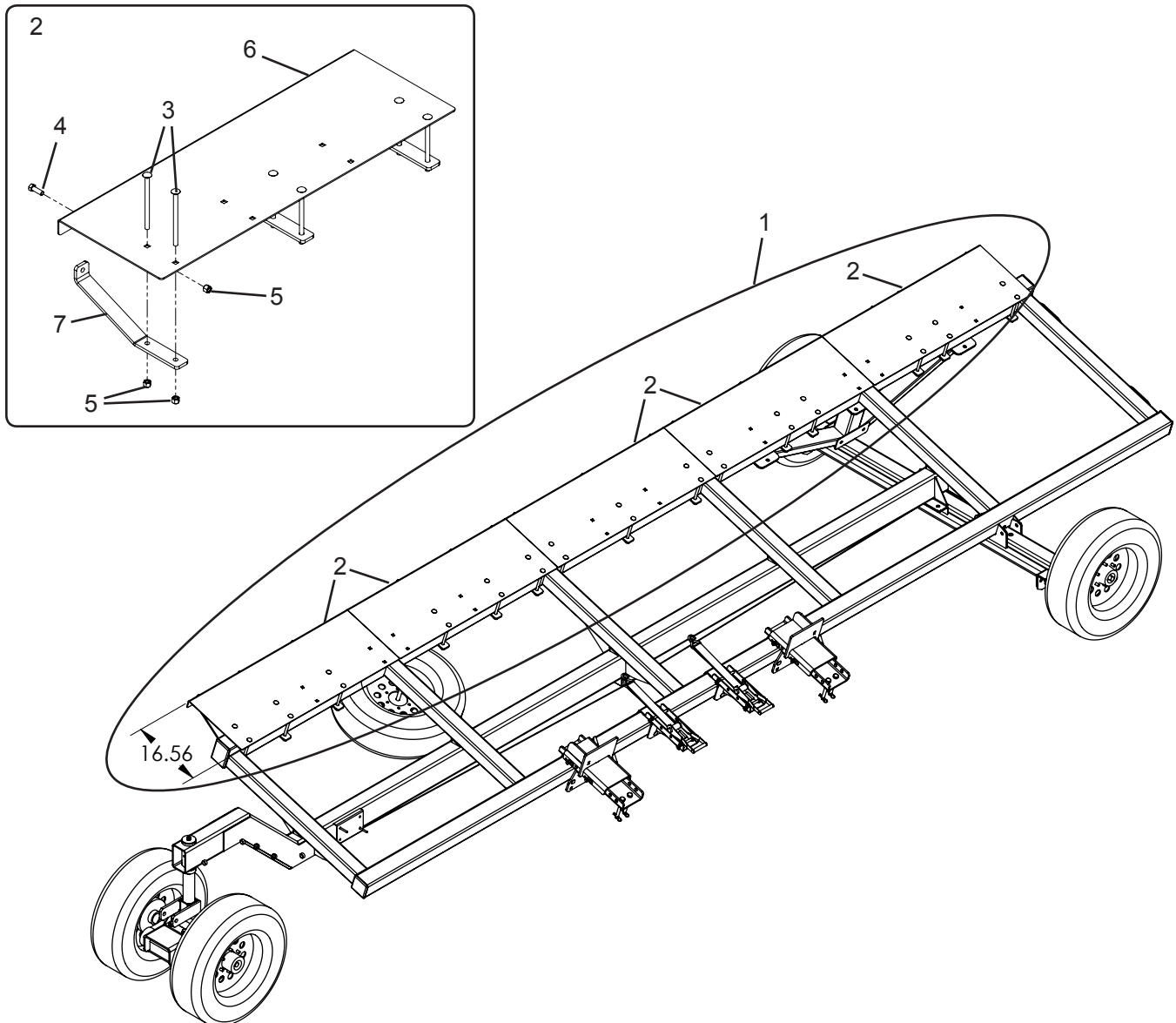
Optional 20' HT Top Rail Extender

Ref No.	Sub No.	Part Number	Qty	Description
1		9H000056	1	Top Rail Extender Kit - 20' HT
	2	5H000275	5	Top Rail Extender Assembly - 48"
	3	1AFC04HGAH5	6	1/2"-13 x 7-1/2" Carriage Bolt, Plated
	4	1AFC12HAAH0	3	1/2" x 1-1/2" Hex Bolt GR. 5
	5	1AFC18H0000	9	1/2" Nylock Nut
2	6	3H000354	1	Top Rail Extender Plate - 48"
	7	3H000355	3	Top Rail Extender Support Bracket

Top Rail Extenders can be used to extend the top rail to approximately 16.5 inches. This will allow better fit-up for wider headers.

The panels can also be reversed, from the position shown, to extend the top rail toward the bottom rail. This will allow for better fit-up of narrow headers.

Please order replacement parts by Part Number and Description.



Optional 20' HT Top Rail Extender 41

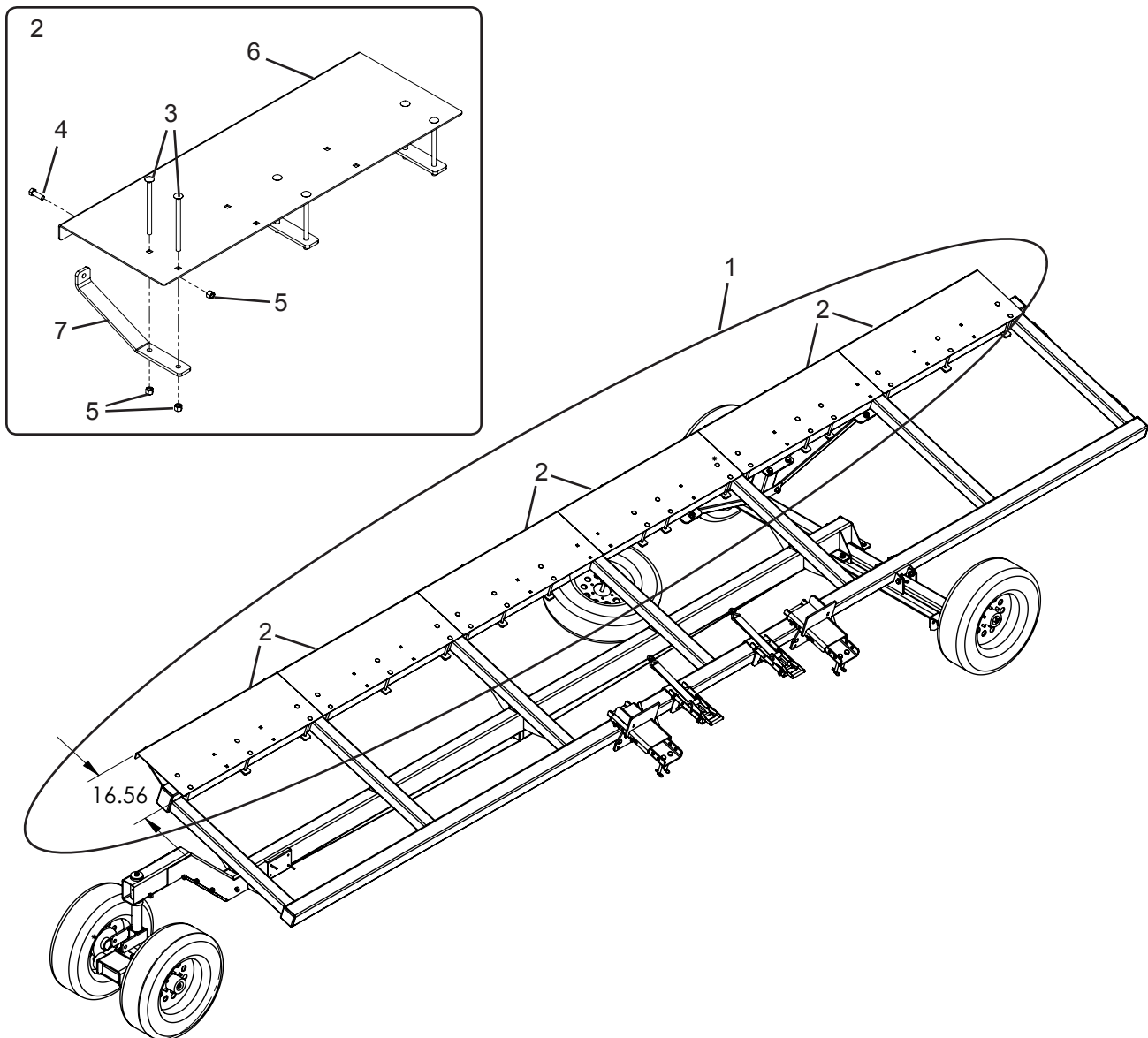
Optional 24' HT Top Rail Extender

Ref No.	Sub No.	Part Number	Qty	Description
1		9H000057	1	Top Rail Extender Kit - 24' HT
	2	5H000275	6	Top Rail Extender Assembly - 48"
	3	1AFC04HGAH5	6	1/2"-13 x 7-1/2" Carriage Bolt, Plated
	4	1AFC12HAAH0	3	1/2" x 1-1/2" Hex Bolt GR. 5
	5	1AFC18H0000	9	1/2" Nylock Nut
2	6	3H000354	1	Top Rail Extender Plate - 48"
	7	3H000355	3	Top Rail Extender Support Bracket

Top Rail Extenders can be used to extend the top rail to approximately 16.5 inches. This will allow better fit-up for wider headers.

The panels can also be reversed, from the position shown, to extend the top rail toward the bottom rail. This will allow for better fit-up of narrow headers.

Please order replacement parts by Part Number and Description.



Optional 24' HT Top Rail Extender 42

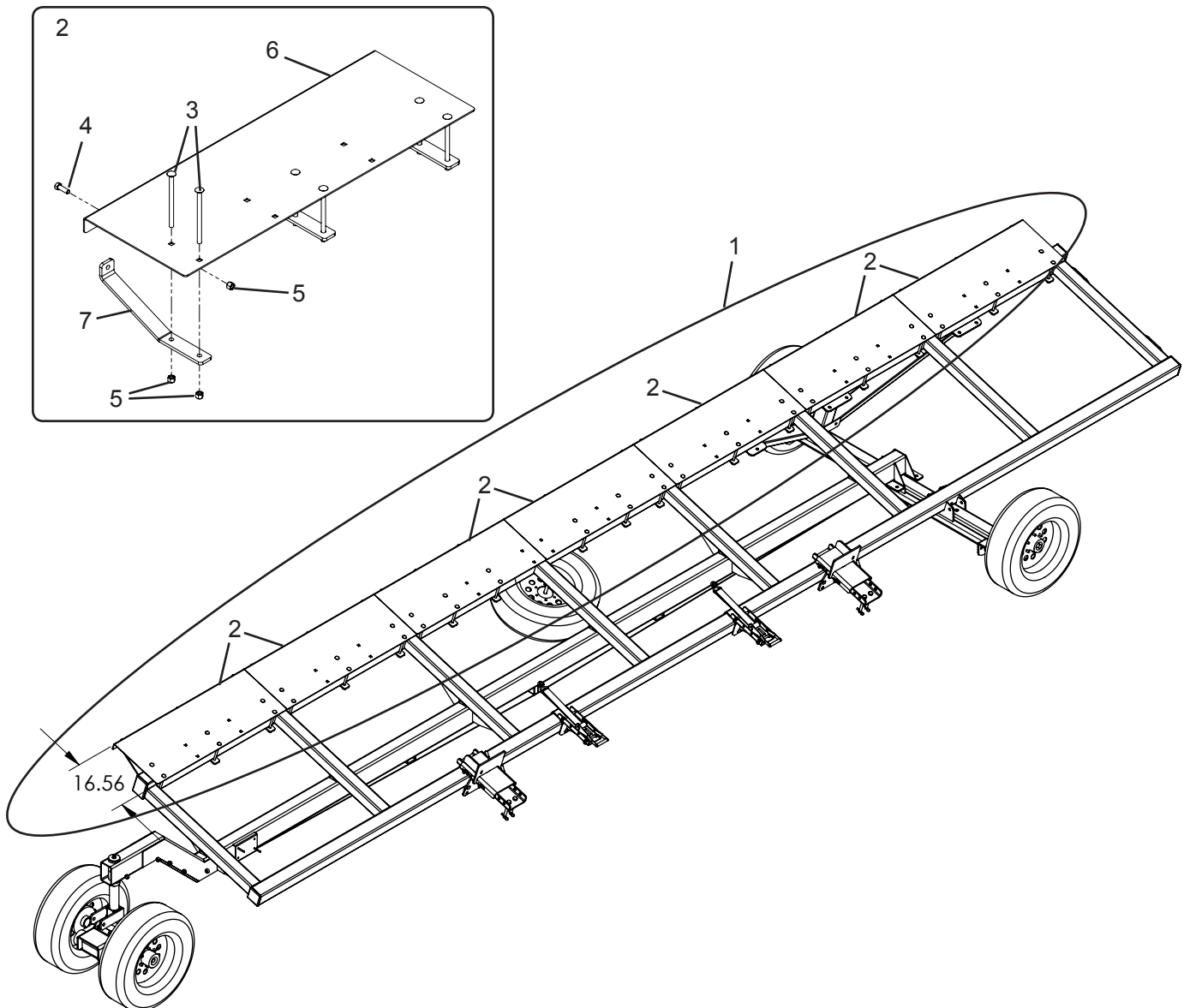
Optional 28' HT Top Rail Extender

Ref No.	Sub No.	Part Number	Qty	Description
1		9H000058	1	Top Rail Extender Kit - 28' HT
	2	5H000275	7	Top Rail Extender Assembly - 48"
	3	1AFC04HGAH5	6	1/2"-13 x 7-1/2" Carriage Bolt, Plated
	4	1AFC12HAAH0	3	1/2" x 1-1/2" Hex Bolt GR. 5
	5	1AFC18H0000	9	1/2" Nylock Nut
2	6	3H000354	1	Top Rail Extender Plate - 48"
	7	3H000355	3	Top Rail Extender Support Bracket

Top Rail Extenders can be used to extend the top rail to approximately 16.5 inches. This will allow better fit-up for wider headers.

The panels can also be reversed, from the position shown, to extend the top rail toward the bottom rail. This will allow for better fit-up of narrow headers.

Please order replacement parts by Part Number and Description.



Optional 28' HT Top Rail Extender 43

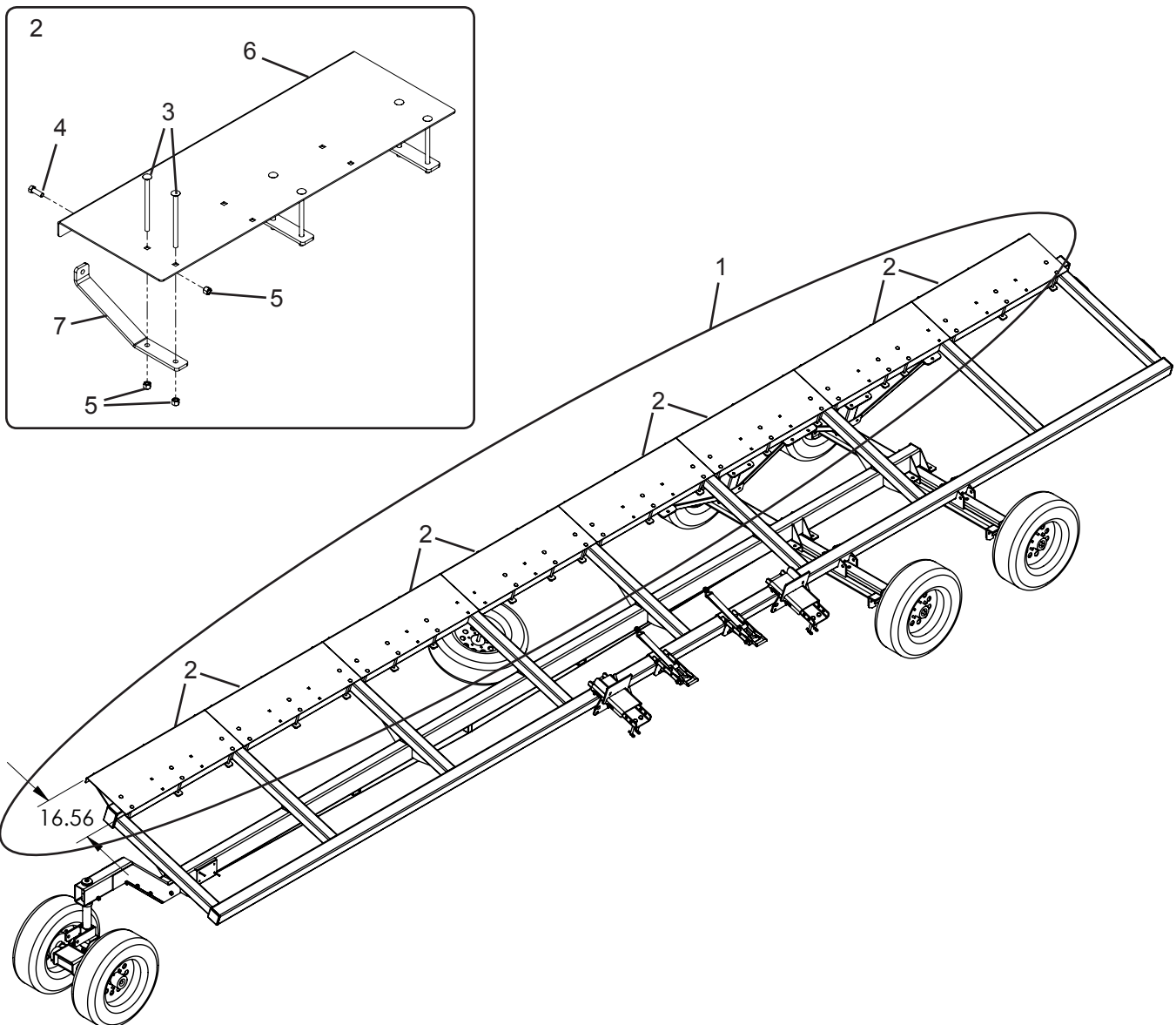
Optional 32' HT Top Rail Extender

Ref No.	Sub No.	Part Number	Qty	Description
1		9H000059	1	Top Rail Extender Kit - 32' HT
	2	5H000275	8	Top Rail Extender Assembly - 48"
	3	1AFC04HGAH5	6	1/2"-13 x 7-1/2" Carriage Bolt, Plated
	4	1AFC12HAAH0	3	1/2" x 1-1/2" Hex Bolt GR. 5
	5	1AFC18H0000	9	1/2" Nylock Nut
2	6	3H000354	1	Top Rail Extender Plate - 48"
	7	3H000355	3	Top Rail Extender Support Bracket

Top Rail Extenders can be used to extend the top rail to approximately 16.5 inches. This will allow better fit-up for wider headers.

The panels can also be reversed, from the position shown, to extend the top rail toward the bottom rail. This will allow for better fit-up of narrow headers.

Please order replacement parts by Part Number and Description.



Optional 32' HT Top Rail Extender 44

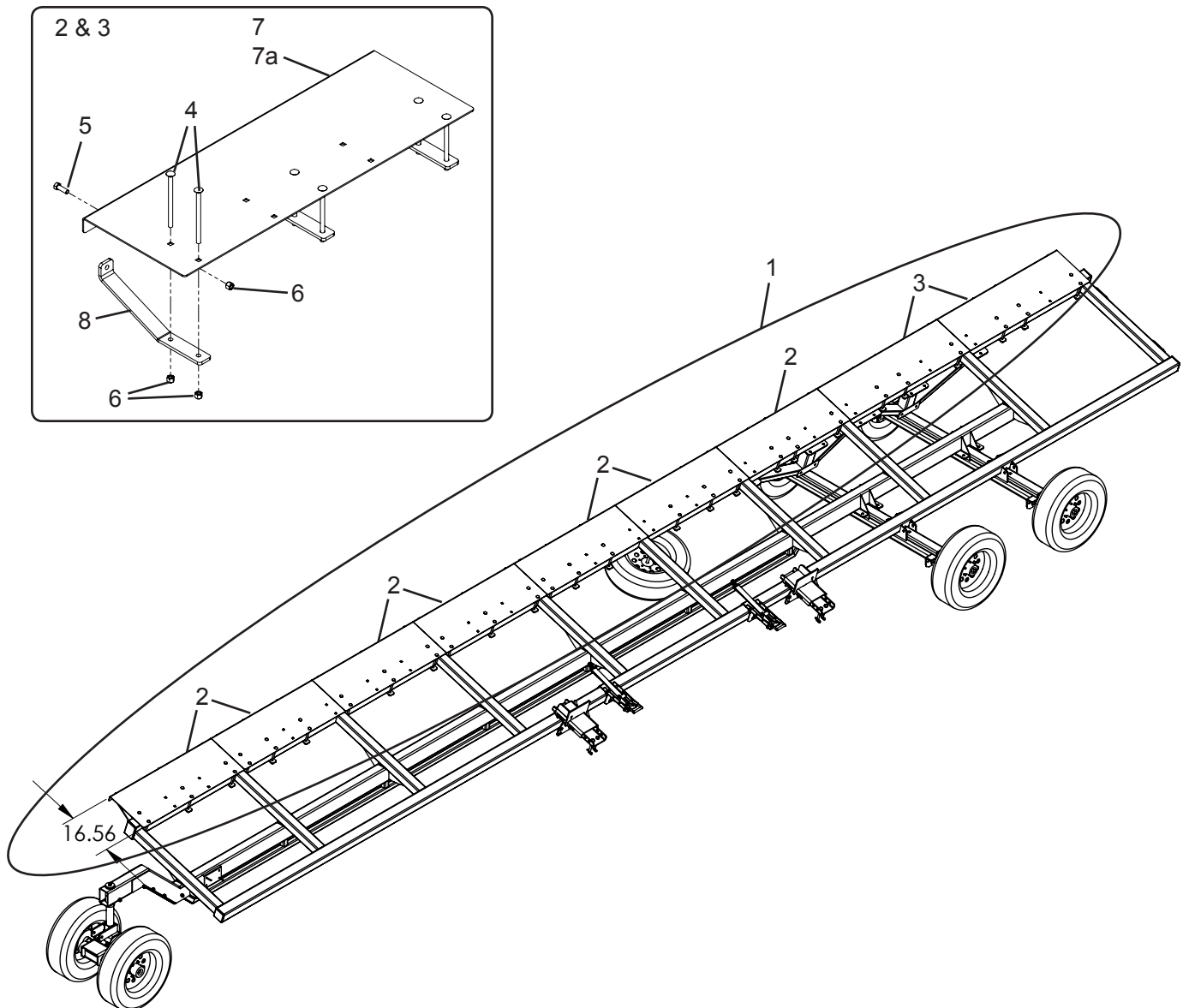
Optional 38' HT Top Rail Extender

Ref No.	Sub No.	Part Number	Qty	Description
1		9H000061	1	Top Rail Extender Kit - 38' HT
	2	5H000275	7	Top Rail Extender Assembly - 48"
	3	5H000283	2	Top Rail Extender Assembly - 57"
	4	1AFC04HGAH5	6	1/2"-13 x 7-1/2" Carriage Bolt, Plated
	5	1AFC12HAAH0	3	1/2" x 1-1/2" Hex Bolt GR. 5
	6	1AFC18H0000	9	1/2" Nylock Nut
2	7	3H000354	1	Top Rail Extender Plate - 48"
3	7a	3H000362	1	Top Rail Extender Plate - 57"
	8	3H000355	3	Top Rail Extender Support Bracket

Top Rail Extenders can be used to extend the top rail to approximately 16.5 inches. This will allow better fit-up for wider headers.

The panels can also be reversed, from the position shown, to extend the top rail toward the bottom rail. This will allow for better fit-up of narrow headers.

Please order replacement parts by Part Number and Description.



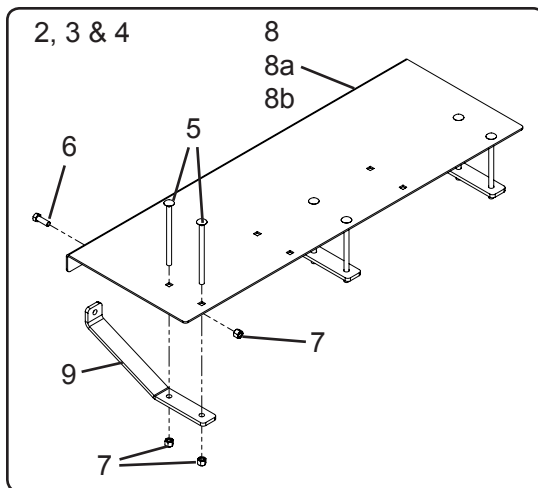
Optional 38' HT Top Rail Extender 45

Optional 42' HT Top Rail Extender

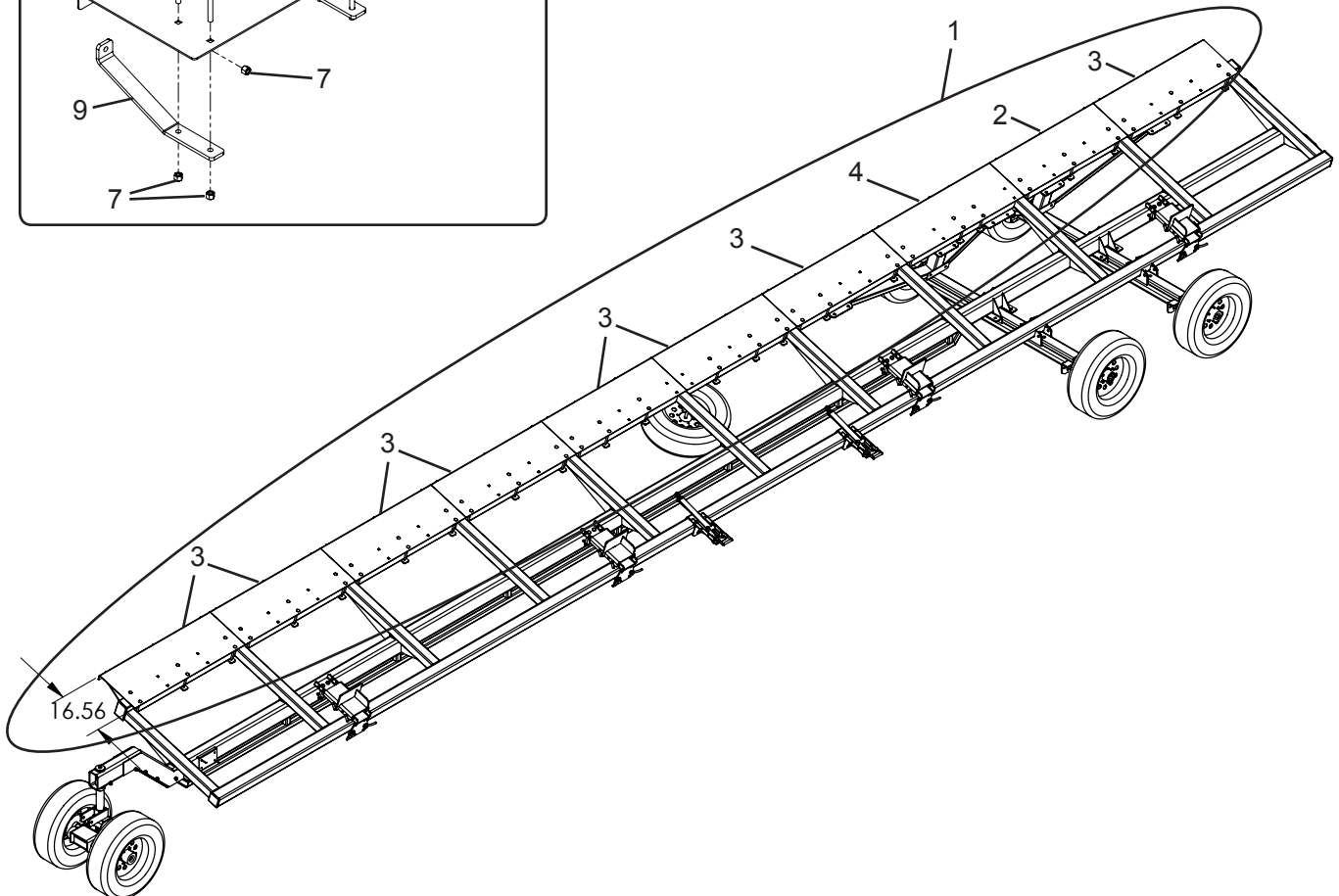
Ref No.	Sub No.	Part Number	Qty	Description
1		9H000062	1	Top Rail Extender Kit - 42' HT
	2	5H000278	1	Top Rail Extender Assembly - 47"
	3	5H000280	8	Top Rail Extender Assembly - 50"
	4	5H000282	1	Top Rail Extender Assembly - 53"
	5	1AFC04HGAH5	6	1/2"-13 x 7-1/2" CARR BOLT PLTD
	6	1AFC12HAAH0	3	1/2" x 1-1/2" HEX BOLT GR. 5
	7	1AFC18H0000	9	1/2" NYLOCK NUT
2	8	3H000358	1	Top Rail Extender Plate - 47"
3	8a	3H000359	1	Top Rail Extender Plate - 50"
4	8b	3H000361	1	Top Rail Extender Plate - 53"
	9	3H000355	3	Top Rail Extender Support Bracket

Top Rail Extenders can be used to extend the top rail to approximately 16.5 inches. This will allow better fit-up for wider headers.

The panels can also be reversed, from the position shown, to extend the top rail toward the bottom rail. This will allow for better fit-up of narrow headers.



Please order replacement parts by Part Number and Description.

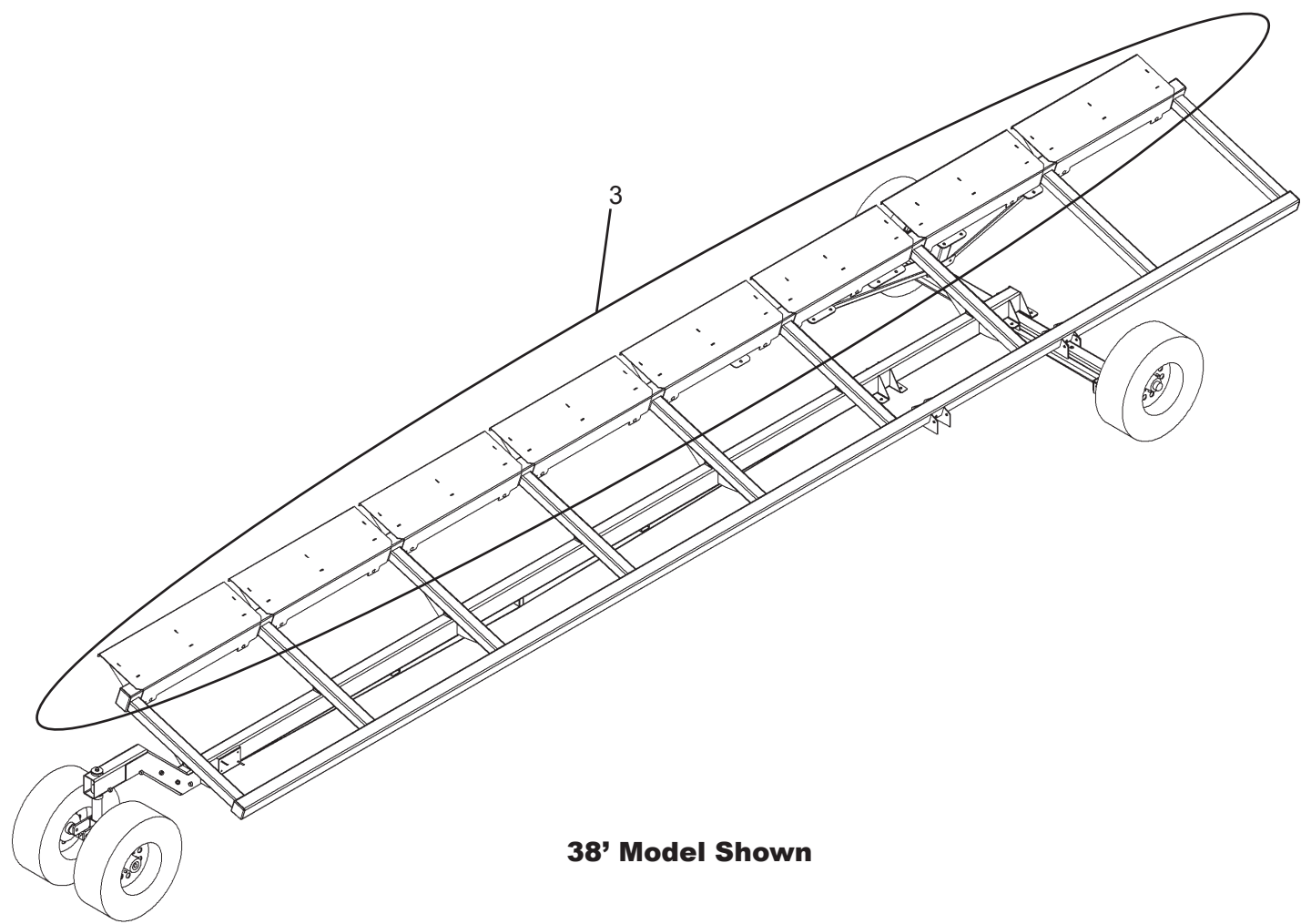


Optional 42' HT Top Rail Extender 46

Optional Top Rail Extender Breakdown

Ref. No.	Part No.	Qty.	Description
1*	9H000015	1	HT TOP RAIL EXTENDER KIT, 32' TRAILER
2*	9H000016	1	HT TOP RAIL EXTENDER KIT, 28' TRAILER
3	9H000017	1	HT TOP RAIL EXTENDER KIT, 38' TRAILER
4*	9H000018	1	HT TOP RAIL EXTENDER KIT, 42' TRAILER

Please order replacement parts by Part Number and Description.
(* =Not Shown)

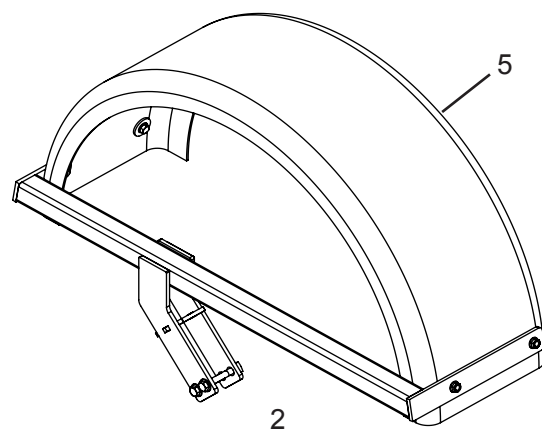
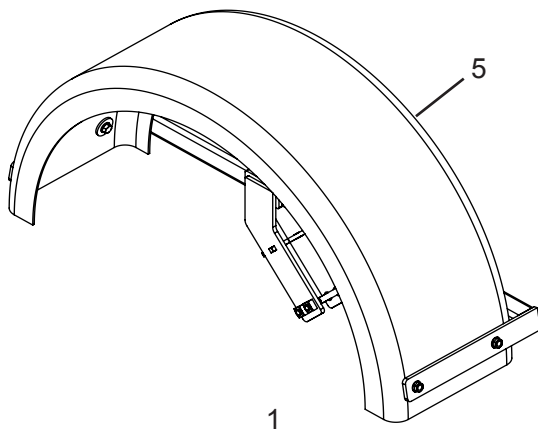


Optional Rear Fenders

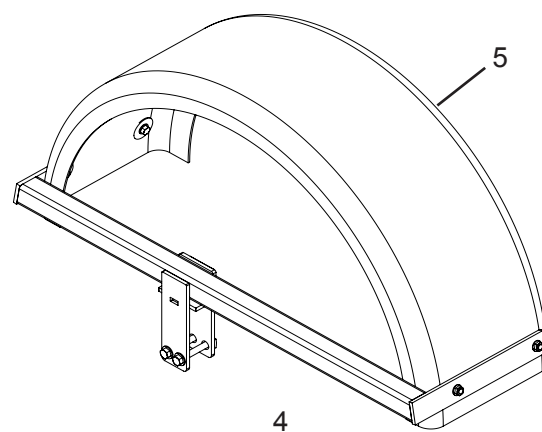
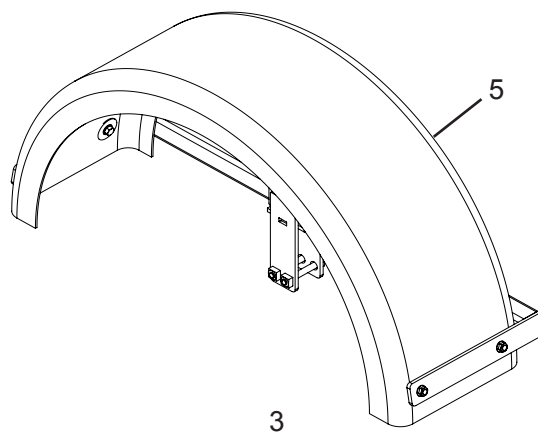
Ref No.	Part No.	Qty	Description	Unit Number
1	5H000141	1	HT Rear Fender Assembly, Driver - Series 2	
2	5H000142	1	HT Rear Fender Assembly, Passenger - Series 2	
3	5H000191	1	HT Rear Fender Assembly, Driver - Series 3	7746-
4	5H000192	1	HT Rear Fender Assembly, Passenger - Series 3	7746-
5	1AU00000075	1	Fender - HT Single Arch - Narrow	

Please order replacement parts by Part Number and Description.

NOTE: Series 2 Fenders are for use on 22.5 degree Up Axles.



NOTE: Series 3 Fenders are for use on 22.5 degree Down Axles.



Maurer Head Trailer Gross Vehicle Weight Ratings

Transporter Length FEET	Highway Tires GVWR
20 Ft. 1,700 lbs (771 kg) Empty Weight	10 Ply on All 11,200 lbs (5,080 kg) GVW
24 Ft. 1,800 lbs (816 kg) Empty Weight	10 Ply on All 11,200 lbs (5,080 kg) GVW
28 Ft. 1,900 lbs (862 kg) Empty Weight	10 Ply on All 11,200 lbs (5,080 kg) GVW
32 Ft. 2,120 lbs (962 kg) Empty Weight "Single" 2,630 lbs (1,193 kg) Empty Weight "Tandem"	10 Ply on All 11,200 lbs (5,080 kg) GVW 16,800 lbs (7,620 kg) GVW
38 Ft. 2,490 lbs (1,129 kg) Empty Weight "Single" 3,000 lbs (1,361 kg) Empty Weight "Tandem"	10 Ply on All 11,200 lbs (5,080 kg) GVW 16,800 lbs (7,620 kg) GVW
42 Ft. 3,850 lbs (1,746 kg) Empty Weight	10 Ply on All 16,800 lbs (7,620 kg) GVW
48 Ft. 4,800 lbs (2,177 kg) Empty Weight	10 Ply on All 16,800 lbs (7,620 kg) GVW

	Highway GAWR
Front Axle #1	5,600 lbs or 2,540 kg
Rear Axle #2	5,600 lbs or 2,540 kg
Rear Axle #3	5,600 lbs or 2,540 kg

Tire Size	Tire Capacity	Cold Inflation Pressure	Rim Size	Rim Capacity
ST 225/75R15 (Hwy Serv.) 10Ply LRE	2,830 lbs 1,284 kg	75 psi 517 kPa	15" x 6" (38cm x 15cm) (6) Bolts on 5.50" (14cm) B.C.	2,800 lbs 1,270 kg

 **MAXIMUM TRANSPORT SPEED = Posted roadway speeds. (Highway Tires)**

TIRE SAFETY

Failure to follow proper procedures when mounting a tire on a rim can produce an explosion which may result in a serious injury or death.

Do not attempt to mount a tire unless you have proper equipment and experience to do job.

Inflating or servicing tires can be dangerous. Whenever possible, trained personnel should be called to service and/or mount tires.

Always order and install tires and wheels with appropriate type and load capacity to meet or exceed anticipated weight to be placed on the equipment.

GVW Ratings 49

Head Transport Checklist

Downtime in the fields caused by field breakdowns is costly and time consuming. Many breakdowns can be eliminated by periodic equipment maintenance. By spending a little time running over this checklist, following proper after-season care, you can save time and money later on.



Warning: To prevent Serious Injury or Death

- Make sure ALL guards and shields are in place.
- Keep hands, feet, and loose clothing away from rotating parts.

Before Going to the Field

1. Visually Inspect

- Inspect tires for cracks and worn spots.
- Inspect head transport, make sure that all guards are in place and in good shape.
- Inspect for any loose bolts, worn parts, or cracked welds, and make any necessary repairs.
- Inspect tie-downs for cuts.

2. Check

- Tires for proper inflation.
- Lug nuts for proper torque.
- Lights for proper operation.
- Zerk locations, wheel bearings, and grease as needed.
- All guards and shields. Replace or repair if necessary to insure proper protection.

3. Replacement Parts

- Replace all worn or damaged parts.
- Replace tie-downs if cuts exist.

After Season Care

- Grease all zerk locations.
- Repack wheel bearings before storage.
- Inspect tires for punctures, holes or any other type of leak and repair as needed.



Maximum Towing Speed

The ST225/75R15 Import Radial tires are stamped (DOT). This signifies that the tire has passed the required Department of Transportation (DOT) tests for posted highway speeds.

Dealer Instructions

Dealer Checklist

(Dealer's Responsibility)

Inspect the equipment thoroughly to be certain it is set up properly before delivering it to the customer. The following checklist is a reminder of points to inspect.

Check off each item if it is found satisfactory or after proper adjustment is made.

Note: It is important for the dealer to visually check and make sure all parts are intact prior to delivery to customer.

- ___ Check that all safety decals are installed and in good condition. Replace if damaged.
- ___ Check that all cotter pins and safety pins are properly installed.
- ___ Show the customer the safe, proper procedures to be used when mounting, dismounting, and storing equipment.
- ___ Show customer how to make adjustments.
- ___ Present Owner's/Operator's Manual and request that the customer and all operators read it before operating equipment. Point out the manual safety rules, explain their meanings and emphasize the increased safety hazards that exist when safety rules are not followed.
- ___ Point out safety decals. Explain their meaning and the need to keep them in place and in good condition. Emphasize the increased safety hazards when instructions are not followed.
- ___ Explain to customer the potential crushing hazards of going underneath raised equipment. Instruct customer that service work does not require going underneath unit and never to do so.

WARRANTY

Please enter information below and save for future reference:

Date Purchased: _____ From (Dealer): _____

Model Number: _____ Serial Number: _____

Maurer warrants this product to be free from defect in material and workmanship. Except as otherwise set forth below, the duration of this Warranty shall be for TWELVE (12) MONTHS COMMENCING ON THE DATE OF DELIVERY OF THE PRODUCT TO THE ORIGINAL PURCHASER.

Under no circumstances will this Warranty apply in the event that the product, in the good faith opinion of Maurer, has been subjected to improper operation, improper maintenance, misuse, or an accident. This Warranty does not apply in the event that the product has been materially modified or repaired by someone other than Maurer, an authorized dealer or distributor, and/or a Maurer authorized service center. This Warranty does not cover repairs made with parts other than those obtainable through Maurer.

This Warranty is extended solely to the purchaser of the product. Should the original purchaser sell or otherwise transfer this product to a third party, this Warranty does not transfer to the third party purchaser in any way. There are no third party beneficiaries of this Warranty.

Maurer makes no warranty, express or implied, with respect to cutting edges, shanks, tires or other parts or accessories not manufactured by Maurer. Warranties for these items, if any, are provided separately by their respective manufacturers.

Maurer's obligation under this Warranty is limited to, at Maurer's option, the repair or replacement, free of charge, of the product if Maurer, in its sole discretion, deems it to be defective or in noncompliance with this Warranty. Such parts shall be provided by the selling dealer to the user during regular working hours. If requested, the product must be returned to Maurer with proof of purchase within thirty (30) days after such defect or noncompliance is discovered or should have been discovered, routed through the dealer and distributor from whom the purchase was made, transportation charges prepaid. Maurer shall complete such repair or replacement within a reasonable time after Maurer receives the product. THERE ARE NO OTHER REMEDIES UNDER THIS WARRANTY. THE REMEDY OF REPAIR OR REPLACEMENT IS THE SOLE AND EXCLUSIVE REMEDY UNDER THIS WARRANTY.

THERE ARE NO WARRANTIES WHICH EXTEND BEYOND THE DESCRIPTION ON THE FACE OF THIS WARRANTY. MAURER MAKES NO OTHER WARRANTY, EXPRESS OR IMPLIED, AND MAURER SPECIFICALLY DISCLAIMS ANY IMPLIED WARRANTY OF MERCHANTABILITY AND/OR ANY IMPLIED WARRANTY OF FITNESS FOR A PARTICULAR PURPOSE (EXCEPT WHERE PROHIBITED BY LAW).

Maurer shall not be liable for any incident or consequential losses, damages or expenses, arising directly or indirectly from the product, whether such claim is based upon breach of contract, breach of warranty, negligence, strict liability in tort or any other legal theory. Maurer's obligation under this warranty, to the extent allowed by law, is in lieu of all warranties, implied or expressed for a particular purpose and any liability for incidental and consequential damages with respect to the sale or use of the items warranted. Such incidental and consequential damages shall include but not be limited to: transportation charges other than normal freight charges; loss of crops or any other loss of income; rental of substitute equipment, expenses due to loss, damage, detention or delay in the delivery of equipment or parts resulting from acts beyond the control of Maurer.

This Warranty is subject to any existing conditions of supply which may directly affect Maurer's ability to obtain materials or manufacture replacement parts.

No agent, representative, dealer, distributor, service person, salesperson, or employee of any company, including without limitation, Maurer, its authorized dealers, distributors, and service centers, is authorized to alter, modify, or enlarge this Warranty.

This Warranty is subject to the warranty registration being submitted. For warranty services, contact your selling dealer.

Warranty 52

WARRANTY FOR PARTS

Maurer Manufacturing, LLC d/b/a Maurer warrants its parts to be free from defect in material and workmanship for a period of ninety (90) days from the date of delivery of the part(s) to the original purchaser.

Replacement or repair parts installed in the equipment covered by warranty are warranted for ninety (90) days from date of purchase of such part or to the expiration of the applicable new equipment warranty period, whichever occurs later.

Under no circumstances will this Warranty apply in the event that the product parts are installed in, in the good faith opinion of Maurer, has been subjected to improper operation, improper maintenance, misuse, or an accident. This Warranty does not cover normal wear or tear, or normal maintenance items.

This Warranty is extended solely to the original purchaser of the product. Should the original purchaser sell or otherwise transfer this product to a third party, this Warranty does not transfer to a third party purchaser in any way. There are no third party beneficiaries of this Warranty.

Maurer's obligation under this Warranty is limited to, at Maurer's option, the repair or replacement, free of charge, of the product if Maurer, in its sole discretion, deems it to be defective or in noncompliance with this Warranty. The selling dealer shall provide such parts to the user during regular working hours. If requested, the product must be returned to Maurer with proof of purchase within thirty (30) days after such defect or noncompliance is discovered or should have been discovered, routed through the dealer and distributor from whom the purchase was made, transportation charges prepaid. Maurer shall complete such repair or replacement within a reasonable time after Maurer receives the product. THERE ARE NO OTHER REMEDIES UNDER THIS WARRANTY. THE REMEDY OF REPAIR OR REPLACEMENT IS THE SOLE AND EXCLUSIVE REMEDY UNDER THIS WARRANTY.

THERE ARE NO WARRANTIES WHICH EXTEND BEYOND THE DESCRIPTION ON THE FACE OF THIS WARRANTY. MAURER MAKES NO OTHER WARRANTY, EXPRESS OR IMPLIED, AND MAURER SPECIFICALLY DISCLAIMS ANY IMPLIED WARRANTY OF MERCHANTABILITY AND/OR ANY IMPLIED WARRANTY OF FITNESS FOR A PARTICULAR PURPOSE (EXCEPT WHERE PROHIBITED BY LAW.)

Maurer shall not be liable for any incidental or consequential losses, damages or expenses, arising directly or indirectly from the product, where such claim is based upon breach of contract, breach of warranty, negligence, strict liability in tort or any other legal theory. Without limiting the generality of the foregoing, Maurer specifically disclaims any damages relating to (i) lost profits, business, revenues, or goodwill; (ii) loss of crops; (iii) loss because of delay in harvesting; (iv) any expense or loss incurred for labor, supplies, substitute machinery or rental; or (v) any other type of damage to property or economic loss.

This Warranty is subject to any existing conditions of supply which may directly affect Maurer's ability to obtain materials or manufacture replacement parts.

No agent, representative, dealer, distributor, service person, salesperson, or employee of any company, including without limitation, Maurer, its authorized dealers, distributors, and service centers, is authorized to alter, modify, or enlarge this Warranty.

For warranty services, contact your selling dealer.

Warranty For Parts 53

This image shows a full page of blank white paper with horizontal ruling lines. The lines are evenly spaced and run across the width of the page, providing a guide for writing or drawing. There are no margins, text, or other markings on the paper.



Cut along dotted

MAURER MANUFACTURING, LLC D/B/A MAURER

HEAD TRANSPORT LIMITED WARRANTY REGISTRATION

Your new Head Transport is covered by a limited warranty.
To initiate the warranty this form **MUST** be completed and returned to
Maurer within **30 days** of delivery.

PLEASE PRINT OR TYPE

Owner's Name	Vehicle Identification Number/Serial Number
PO Box / Street Address	Transport Length
City, State, Zip	Dealership Name
Telephone Number	City, State, Zip
Date of Purchase	Telephone Number
Intended Use: <input type="checkbox"/> Rental <input type="checkbox"/> Personal <input type="checkbox"/> Farm/Ranch <input type="checkbox"/> Commercial <input type="checkbox"/> Government	Dealer Representative
<p>The Owner's Manual has been given to me and explained. I have read and fully understand the safe operation and the proper servicing and maintenance of the above transport and the terms of the limited warranty shown inside the manual.</p> <p>Purchaser's Signature: _____ Date: _____</p>	
<p>Pre-Delivery Service: This transport was carefully prepared for delivery, inspected and adjusted according to factory recommendations before delivery to the retail purchaser.</p> <p>Delivery Service: The limited warranty was explained and a copy was presented to the retail purchaser along with the Owner's Manual.</p> <p>Dealer Representative Signature: _____</p>	

Please mail to the following:

MAURER
PO BOX 160
SPENCER, IA 51301-0160



Cut along dotted

**Instruction Manual
8H000004
Revision AK 08/08/16**

