



*Doing Our Best to Provide You the Best*

AC20037, Rev 16  
03/18

SIDEQuest



SIDEQuest™  
by DEMCO

U.S. Patent No. 6,286,870

OPERATOR MANUAL

Thank you for purchasing Demco's SIDEQUEST. We feel you have made a wise choice and hope you are completely satisfied with your SIDEQUEST. If you have any questions regarding the applications of certain solutions or chemicals, contact your chemical supplier and follow chemical manufacturer recommendations as well as all licensing and use restrictions or regulations.

**WARRANTY POLICY, OPERATOR MANUALS & REGISTRATION**

Go online to [www.demco-products.com](http://www.demco-products.com) to review Demco warranty policies, operator manuals and register your Demco product.



**WARNING:** TO AVOID PERSONAL INJURY OR PROPERTY DAMAGE, OBSERVE FOLLOWING INSTRUCTIONS:

Chemicals are dangerous. Know exactly what you're going to do and what is going to happen before attempting to work with these products. Improper selection or use can injure people, animals, plants and soil.

Always wear protective clothing such as coveralls, goggles and gloves when working with chemicals or sprayer.

Be sure to dispose of all unused chemicals or solutions in a proper and ecologically sound manner.

**GENERAL INFORMATION**

1. Unless otherwise specified, high-strength (grade5) (3 radial-line head markings) hex head bolts are used throughout assembly of this sprayer.

2. Whenever terms “**LEFT**” and “**RIGHT**” are used in this manual it means from a position behind sprayer and facing forward.

3. When placing a parts order, refer to this manual for proper part numbers and place order by **PART NO.** and **DESCRIPTION**.

**Table of Contents**

General information.....	2
Safety Information .....	3-10
Safety Sign Locations .....	5
Bolt Torque .....	11
Alignment/Run Out Procedures .....	12
Assembly Instructions .....	13
Parts Breakdown .....	14-17
Plumbing Breakdown .....	15
Optional Jack Stands Breakdown .....	18
Optional Fold-Away External Step Breakdown.....	18
Sprayer Checklist .....	19

## SAFETY

**TAKE NOTE! THIS SAFETY ALERT SYMBOL FOUND THROUGHOUT THIS MANUAL IS USED TO CALL YOUR ATTENTION TO INSTRUCTIONS INVOLVING YOUR PERSONAL SAFETY AND SAFETY OF OTHERS. FAILURE TO FOLLOW THESE INSTRUCTIONS CAN RESULT IN INJURY OR DEATH.**



**THIS SYMBOL MEANS**

**ATTENTION**

**BECOME ALERT**

**YOUR SAFETY IS INVOLVED!**

### **SIGNAL WORDS**

Note: use of the following signal words **DANGER**, **WARNING**, and **CAUTION** with safety messages. Appropriate signal word for each has been selected using following guidelines:

#### **DANGER:**

Indicates an imminently hazardous situation that, if not avoided, will result in death or serious injury. This signal word is to be limited to most extreme situations typically for machine components which, for functional purposes, cannot be guarded.

#### **WARNING:**

Indicates a potentially hazardous situation that, if not avoided, could result in death or serious injury, and includes hazards that are exposed when guards are removed. It may also be used to alert against unsafe practices.

#### **CAUTION:**

Indicates a potentially hazardous situation that, if not avoided, may result in minor or moderate injury. It may also be used to alert against unsafe practices.

If you have questions not answered in this manual, require additional copies, or if your manual is damaged, please contact your dealer or Demco 4010 320th Street, Boyden, IA 51234

ph: (712) 725-2311 or (712) 725-2302 Toll Free: 1-800-543-3626 Fax: (712) 725-2380

<http://www.demco-products.com>



## **SAFETY...YOU CAN LIVE WITH IT**



### **EQUIPMENT SAFETY GUIDELINES**

Every year many accidents occur which could be avoided by a few seconds of thought and more careful approach to handling equipment. You, the operator, can avoid accidents by observing precautions in this section. To avoid personal injury, study precautions and insist those working with you, or you yourself, follow them.

In order to provide a better view, certain illustrations in this manual may show an assembly with a safety shield removed. However, sprayer should never be operated in this condition. Keep all shields in place. If shield removal becomes necessary for repairs, replace shield prior to use.

Replace any caution, warning, danger or instruction safety decal that is not readable or is missing. Location of such decals is indicated in this booklet.

Do not attempt to operate this sprayer under the influence of alcohol or drugs.

Review safety instructions with all users.

Operator should be a responsible adult. **DO NOT ALLOW PERSONS TO OPERATE OR ASSEMBLE THIS SPRAYER UNTIL THEY HAVE DEVELOPED A THOROUGH UNDERSTANDING OF SAFETY PRECAUTIONS AND HOW IT WORKS.**

To prevent injury or death, use a tractor equipped with a roll over protective system (ROPS). Do not paint over, remove, or deface any safety signs or warning decals on your sprayer. Observe all safety signs and practice instructions on them.

Never exceed limits of sprayer. If its ability to do a job, or to do so safely is in question **DON'T TRY IT.**



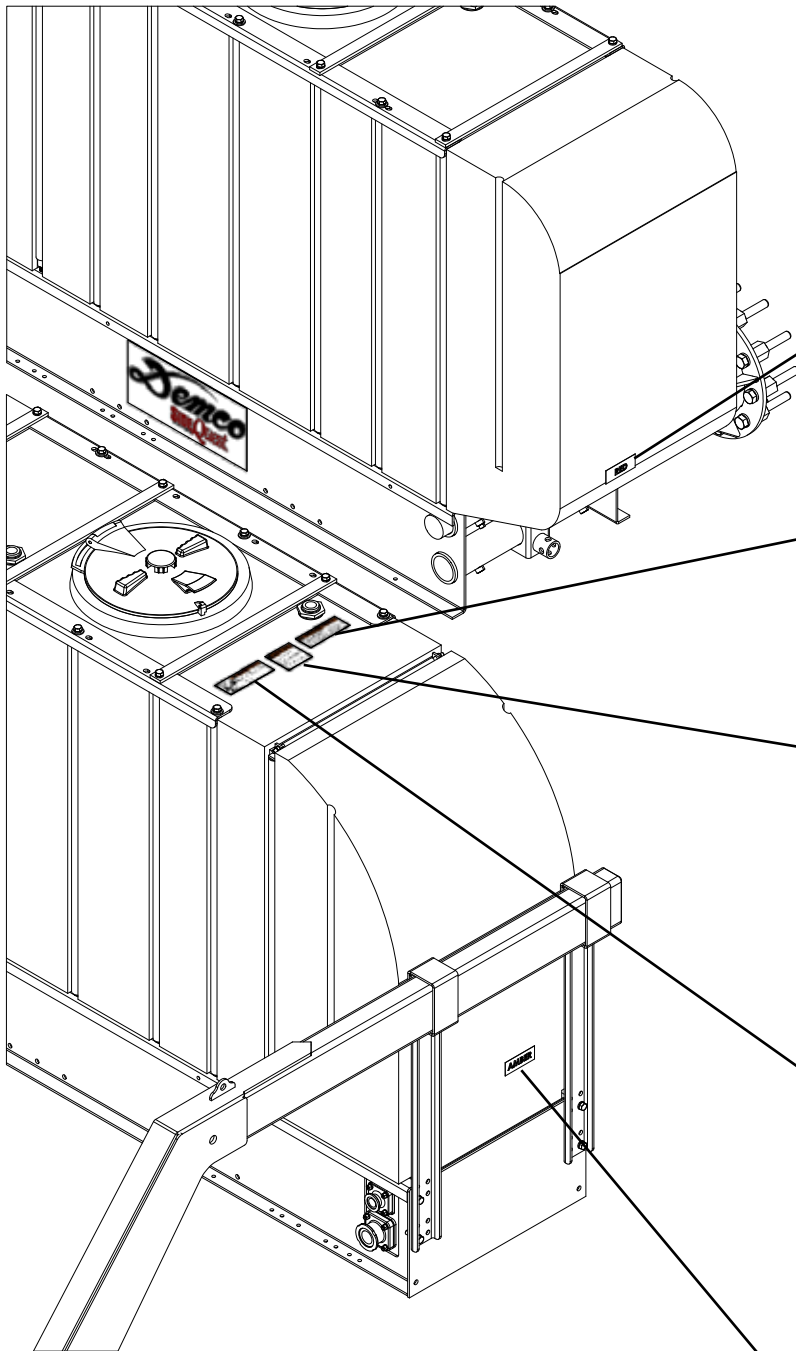
### **LIGHTING AND MARKING**

It is the responsibility of operator to know lighting and marking requirements of local highway authorities and to install and maintain equipment to provide compliance with regulations. Add extra lights when transporting at night or during periods of limited visibility.

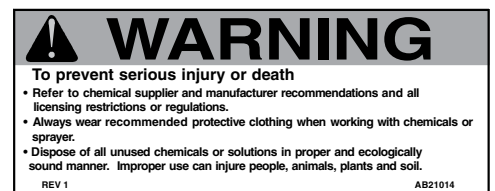
Lighting kits are available from your dealer or manufacturer.



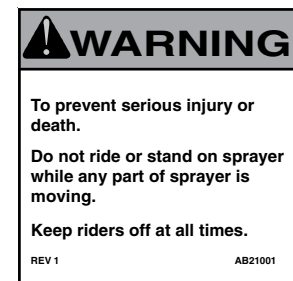
## SAFETY SIGN LOCATIONS



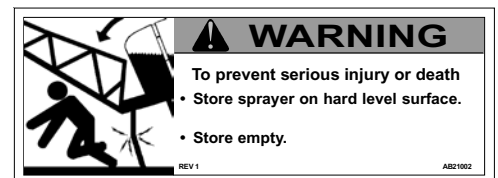
Part# 10328 Red  
(on back side of tank)



AB21014



AB21001



AB21002

Part# 10327 Amber



## **SAFETY SIGN CARE**

- Keep safety signs clean and legible at all times.
- Replace safety signs that are missing or have become illegible.
- Replacement parts that displayed a safety sign should also display current sign.
- Safety signs are available from your distributor, dealer parts department, or manufacturer.

### **How to install safety signs:**

- Be sure installation area is clean and dry.
- Decide on exact position before you remove backing paper.
- Remove smallest portion of split backing paper.
- Align decal over specified area and carefully press small portion with exposed sticky backing in place.
- Slowly peel back remaining paper and carefully smooth remaining portion of decal into place.
- Small air pockets can be pierced with a pin and smoothed out using piece of decal backing paper.



## **TIRE SAFETY**

- Failure to follow proper procedures when mounting tire on rim can produce an explosion resulting in serious injury or death.
- Do not attempt to mount tire unless you have proper equipment and experience.
- Inflating or servicing tires can be dangerous. Whenever possible, trained personnel should be called to service or mount tires.
- Always order and install tires and wheels with appropriate type and load capacity to meet or exceed anticipated weight to be placed on sprayer.



## **REMEMBER**

Your best assurance against accidents is a careful and responsible operator. If there is any portion of this manual or function you do not understand, contact your local authorized dealer or manufacturer.



## **BEFORE OPERATION:**

- Carefully study and understand this manual.
- Do not wear loose-fitting clothing which may catch in moving parts.
- Always wear protective clothing and substantial shoes.
- It is recommended that suitable hearing and eye protection be worn.
- Operator may come in contact with certain materials which may require specific safety equipment relative to handling of such materials. (Examples: extremely dust, molds, fungus, bulk fertilizers, etc.)

- Keep wheel and lug nuts tightened to specified torque.
- Assure that agricultural implement tires are inflated evenly.
- Give sprayer a visual inspection for any loose bolts, worn parts, or cracked welds, and make necessary repairs. Follow maintenance safety instructions included in this manual.
- Be sure there are no tools lying on or in equipment.
- Do not use the sprayer until you are sure that area is clear, especially around children and animals.
- Don't hurry learning process or take sprayer for granted. Ease into it and become familiar with your new equipment.
- Practice operation of your sprayer and its attachments. Completely familiarize yourself and other operators with its operation before using.
- Use a tractor equipped with Roll Over Protection System (ROPS) and fasten your seat belt prior to starting engine.
- Manufacturer does not recommend usage of tractor with ROPS removed.
- Move tractor wheels to widest recommended settings to increase stability.
- Do not allow anyone to stand between tongue or hitch and towing unit when backing up to equipment.



## **DURING OPERATION**

- Beware of bystanders, **PARTICULARLY CHILDREN!** Always look around to make sure it is safe to start engine of towing unit or move sprayer. This is particularly important with higher noise levels and quiet cabs, as you may not hear people shouting.
- **NO PASSENGERS ALLOWED**- Do not carry passengers anywhere on or in the tractor or sprayer.
- Keep hands and clothing clear of moving parts.
- Do not clean, lubricate, or adjust your sprayer while it is moving.
- When halting operation, even periodically, set tractor or towing unit brakes, disengage PTO, shut off engine, and **remove ignition key**.
- Be especially observant of operating area and terrain- watch for holes, rocks, or other hidden hazards. Always inspect area prior to operation.
  - DO NOT operate near edge of drop-offs or banks.
  - DO NOT operate on steep slopes as overturn may result.
  - Operate up and down (not across) intermediate slopes. Avoid sudden starts and stops.

- Pick the most level possible route when transporting across fields. Avoid edges of ditches, gullies, and steep hillsides.
- Be extra careful when working on inclines.
- Periodically clear equipment of brush, twigs, or other materials to prevent buildup of dry combustible materials.
- Maneuver tractor or towing unit at safe speeds.
- Avoid overhead wires or other obstacles. Contact with overhead lines could cause serious injury or death.
- Avoid loose gravel, rocks, and holes; they can be dangerous for equipment operation or movement.
- Allow for sprayer length when making turns.
- Do not walk or work under raised components or attachments unless securely positioned and blocked.
- Keep all bystanders, pets, and livestock clear of work area.
- Operate towing unit from operators seat only.
- Never stand alongside of unit with engine running or attempt to start engine and/or operate machine while standing alongside of unit.
- Never leave running equipment attachments unattended.
- As a precaution, always recheck hardware on equipment following every 100 hours of operation. Correct all problems. Follow maintenance safety procedures.



## **FOLLOWING OPERATION**

- Following operation, or when unhitching, stop tractor or towing unit, set brakes, disengage PTO and all power drives, shut off engine and **remove ignition key**.
- Store sprayer in an area away from human activity.
- Do not park sprayer where it will be exposed to livestock for long periods of time. Damage and livestock injury could result.
- Do not permit children to play on or around the stored sprayer.
- Make sure all parked machines are on a hard, level surface and engage all safety devices.
- Wheel chocks may be needed to prevent unit from rolling.





## **HIGHWAY AND TRANSPORT OPERATIONS**

- **SAFETY CHAINS:** If equipment is going to be transported on a public highway, always follow state and local regulations regarding safety chains and auxiliary lighting. Be sure to check with local law enforcement agencies for your own particular regulations. If required safety chains should be obtained and installed. Only safety chains (not elastic or nylon/plastic tow straps) should be used to retain connection between towing and towed machines in event of separation of primary attaching system. Use a high strength, appropriately sized hitch pin with a mechanical retainer and attach safety chains. Criss cross chains under tongue and secure to draw bar cage, mounting loops, or bumper frame.
- Adopt safe driving practices:
  - Keep brake pedals latched together at all times. **NEVER USE INDEPENDENT BRAKING WITH SPRAYER IN TOW. LOSS OF CONTROL OR UPSET MAY RESULT.**
  - Always drive at a safe speed relative to local conditions and ensure that your speed is low enough for an emergency stop. Keep speed to a minimum.
  - Reduce speed prior to turns to avoid risk of overturning.
  - Always keep tractor or towing unit in gear to provide engine braking when going downhill. Do not coast.
  - Do not drink and drive!
- Comply with state and local laws governing highway safety and movement of farm machinery on public roads.
- Use approved accessory lighting flags and necessary warning devices to protect operators of other vehicles on highway during transport. Various safety lights and devices are available from your dealer.
- Use of flashing amber lights is acceptable in most localities. However, some localities prohibit their use. Local laws should be checked for all highway lighting and marking requirements.
- When driving tractor and sprayer under 20 mph (40 kph) day or night, use flashing amber warning lights and a slow moving vehicle (SMV) identification emblem.
- Plan your route to avoid heavy traffic.
- Be a safe and courteous driver. Always yield to oncoming traffic in all situations, including narrow bridges, intersections, etc.
- Be observant of bridge load ratings. Do not cross bridges rated lower than gross weight of unit you are operating.

- Watch for obstructions overhead and side to side while transporting.
- Always operate equipment in a position to provide maximum visibility at all times. Make allowances for increased length and weight of sprayer when making turns, or stopping.



## **PERFORMING MAINTENANCE**

- Good maintenance is your responsibility. Poor maintenance is an invitation to trouble.
- Make sure there is plenty of ventilation. Never operate engine of towing vehicle in a closed building. Exhaust fumes may cause asphyxiation.
- Before working on this machine, stop towing vehicle, set brakes, disengage PTO and all power drives, shut off engine and **remove ignition key**.
- Be certain all moving parts and attachments have come to a complete stop before attempting to perform maintenance.
- Always use a safety support and block wheels. Never use a jack to support machine.
- Always use proper tools or equipment for job at hand.
- Use extreme caution when making adjustments.
- Follow torque chart in this manual when tightening bolts and nuts.
- Never use your hands to locate a hydraulic leak on attachments. Use a small piece of cardboard or wood. Hydraulic fluid escaping under pressure can penetrate skin.
- Openings in skin and minor cuts are susceptible to infection from hydraulic fluid.  
**Without immediate medical treatment, serious infection and reactions can occur.**
- When disconnecting hydraulic lines, shut off hydraulic supply and relieve all hydraulic pressure.
- Replace **all shields** and **guards** after servicing and before moving.
- After servicing, be sure all tools, parts and service equipment are removed.
- Do not allow grease or oil to build up on any steps or platform.
- When replacing bolts refer to owners manual.
- Refer to bolt torque chart for head identification marking.
- Where replacement parts are necessary for periodic maintenance and servicing, genuine factory replacement parts must be used to restore your equipment to original specifications. Manufacturer will not claim responsibility for use of unapproved parts or accessories and other damages as a result of their use.
- If equipment has been altered in any way from original design, manufacturer does not accept any liability for injury or warranty.
- A fire extinguisher and first aid kit should be kept readily accessible while performing maintenance on this equipment

# BOLT TORQUE

## TORQUE DATA FOR STANDARD NUTS, BOLTS, AND CAPSCREWS.

Tighten all bolts to torques specified in chart unless otherwise noted. Check tightness of bolts periodically, using bolt chart as guide. Replace hardware with same grade bolt.

NOTE: Unless otherwise specified, high-strength Grade 5 hex bolts are used throughout assembly of equipment.



### Torque Specifications

**Bolt Torque for Standard bolts \***

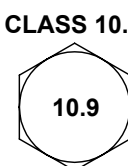
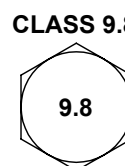
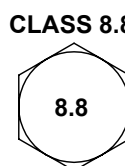
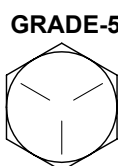
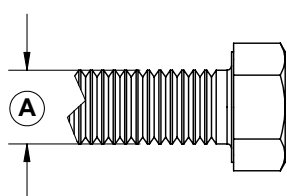
"A"	GRADE 2		GRADE 5		GRADE 8	
	lb-ft	(N.m)	lb-ft	(N.m)	lb-ft	(N.m)
1/4"	6	(8)	9	(12)	12	(16)
5/16"	10	(13)	18	(25)	25	(35)
3/8"	20	(27)	30	(40)	45	(60)
7/16"	30	(40)	50	(70)	80	(110)
1/2"	45	(60)	75	(100)	115	(155)
9/16"	70	(95)	115	(155)	165	(220)
5/8"	95	(130)	150	(200)	225	(300)
3/4"	165	(225)	290	(390)	400	(540)
7/8"	170	(230)	420	(570)	650	(880)
1"	225	(300)	630	(850)	970	(1310)

**Bolt Torque for Metric bolts \***

"A"	CLASS 8.8		CLASS 9.8		CLASS 10.9	
	lb-ft	(N.m)	lb-ft	(N.m)	lb-ft	(N.m)
6	9	(13)	10	(14)	13	(17)
7	15	(21)	18	(24)	21	(29)
8	23	(31)	25	(34)	31	(42)
10	45	(61)	50	(68)	61	(83)
12	78	(106)	88	(118)	106	(144)
14	125	(169)	140	(189)	170	(230)
16	194	(263)	216	(293)	263	(357)
18	268	(363)	--	--	364	(493)
20	378	(513)	--	--	515	(689)
22	516	(699)	--	--	702	(952)
24	654	(886)	--	--	890	(1206)

Torque figures indicated are valid for non-greased or non-oiled threads and heads unless otherwise specified. Therefore, do not grease or oil bolts or capscrews unless otherwise specified in this manual. When using locking elements, increase torque values by 5%.

\* GRADE or CLASS value for bolts and capscrews are identified by their head markings.

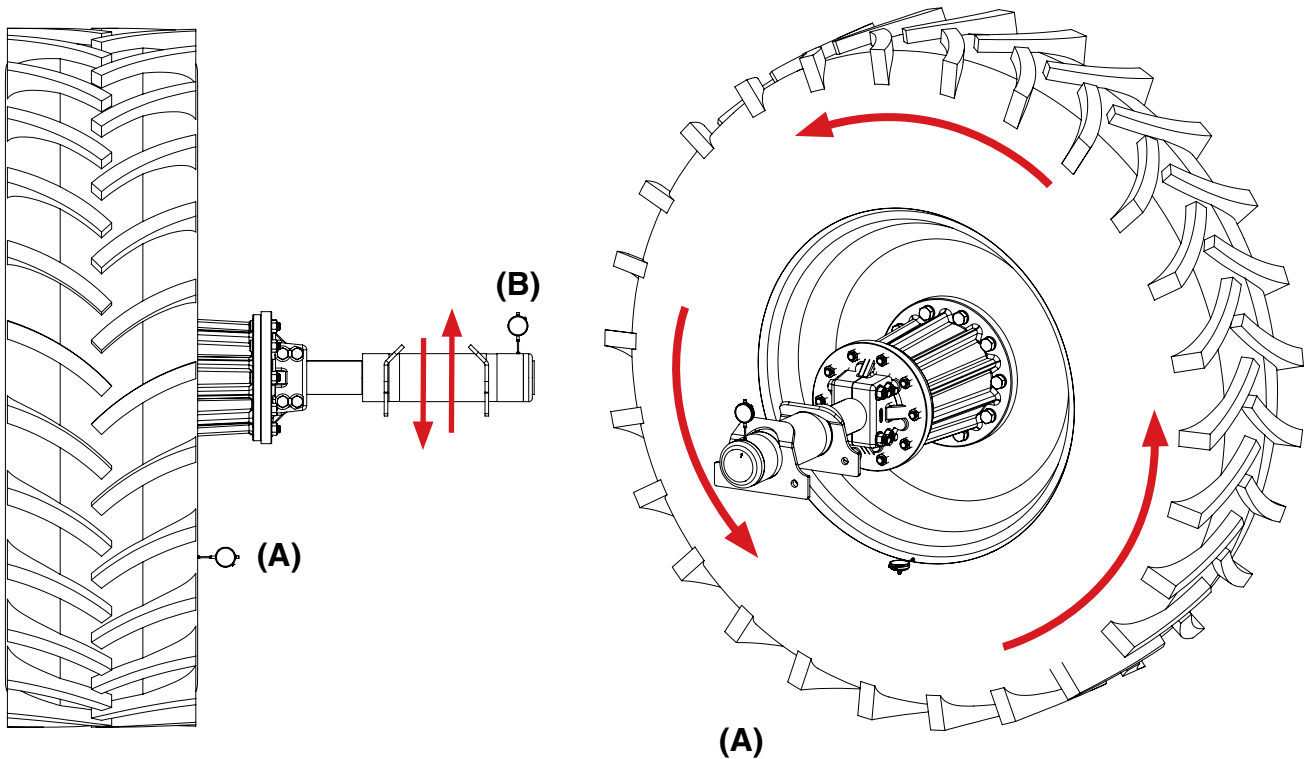


### Wheel Bearing Adjustment

1. Tighten castle or slotted hex nut to initial torque indicated on chart while turning hub in both directions to insure all bearing surfaces are in contact.
2. Back nut off and repeat step #1.
3. Back nut off, do not allow hub to turn.
4. Tighten nut to final torque indicated on chart.
5. Install cotter pin, if needed loosen or tighten nut to the next closest locking slot.
6. Chuck hub for end play.
7. If end play can be felt, start over and readjust bearings. If end play is felt again, try readjusting with a different castle or slotted hex nut.
8. The bearing are set correctly when no end play can be felt after adjustment.

Hub	Initial Toque	Final Torque
10 bolt	75 ft/ lbs	50 ft/lbs

## PROCEDURE FOR CHECKING ALIGNMENT/RUN OUT



1. Block wheels to prevent tractor from moving.
2. Raise rear tractor tire.
3. Check rim alignment at 3, 6, 9, or 12 o'clock position while rotating wheel **(A)**.
4. If measurement exceeds 1/4" total, remove wheel and loosen tractor hub (clean hub/axle if necessary) and re-torque according to tractor manufacturer specifications.
5. Reinstall wheel and repeat steps 3 & 4 until measurement is 1/4" or less.
6. Install hub spacer and spindle assembly. Refer to Demco SideQuest operator manual section "Assembly Instructions".
7. To check spindle alignment, rotate wheel and measure at 1"- 2" from end of assembly **(B)**.
8. If measurement exceeds 1/4" total, repeat steps 3 & 4 until proper alignment is achieved.

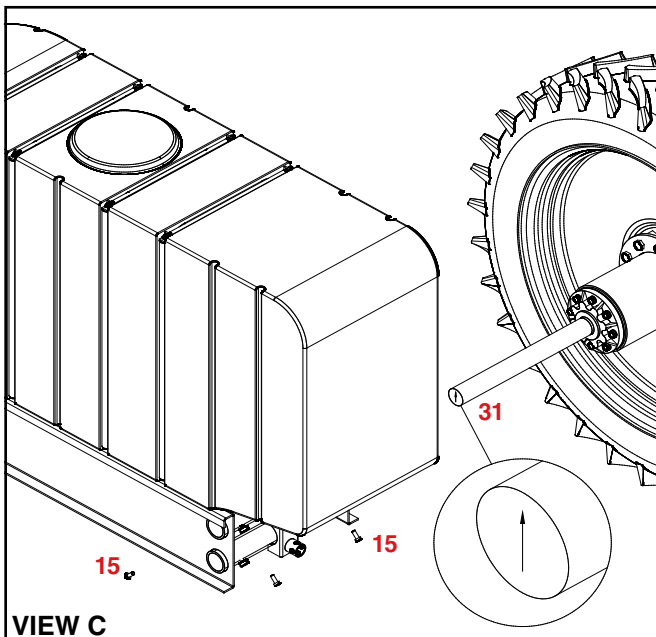
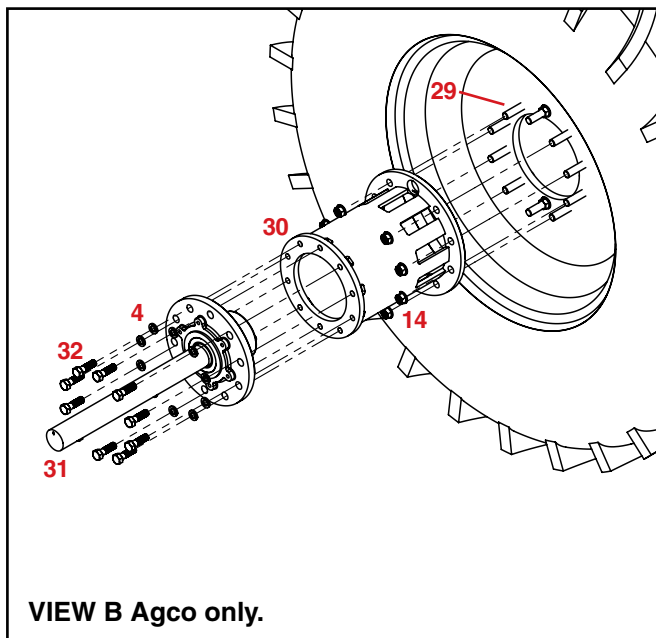
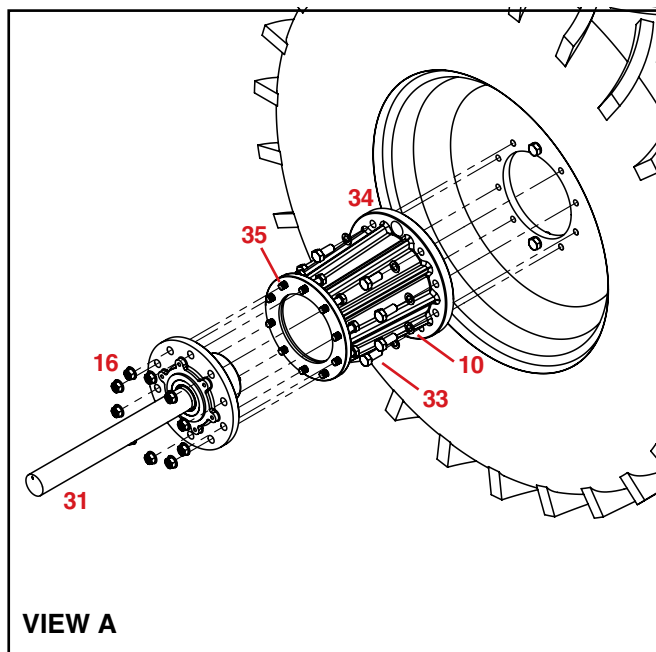
## Assembly Instructions For 10-Bolt Hub

**Preparation:** Remove any loader brackets from the tractor. The tractor duals must be set to 120" wheel spacing. Mount base plate (specific to your tractor model) to the side of the tractor. See separate instruction found in base plate parts box.

1. With proper hydraulic jack, lift tractor until weight is off dual wheel but still touching ground. **Be sure to secure wheel properly.** Remove all lug bolts on the tractor's dual as shown in **VIEW A**.
2. Bolt the Hub Spacer to the tractor's dual:
  - **VIEW A** - Bolt the Hub Spacer to the tractor's dual using (10) #33 Hex Hd. Bolts and Tractor's original washers. Bolt the Hub/Spindle Assembly to the Hub Spacer using (10) #35 and (10) #16 Wheel Nuts.
  - **VIEW B** - Bolt the Hub Spacer to the tractor's dual using (10) #29 D-head Studs and Tractor's original wheel nuts. Bolt the Hub/Spindle Assembly to the Hub Spacer using (10) #32 and (10) #4 Lockwashers.
- Torque all bolts to the specifications found in this manual.
3. Before installing tank assemblies onto the Hub/Spindle, determine which height setting is desirable. Slide the tank assembly over the spindle as shown in **VIEW C**. Make sure the arrow on the end of the spindle is always pointing up as shown. Slide the tank assembly in until there is a spacing of approximately 2" between the tire and the tank assembly. Use (4) #15 set screws to hold the spindle in place. Turn the set screws into the threaded inserts on the outside of the tube the spindle has been placed in.
4. Install Extension Arm #26 to the tractor base plate on **P. 17.** using (1) #27 Pin and (2) #12 Lynch Pins.
5. Slide the tube slide box #25 onto the extension arm and bolt channels #24 to front of tank carrier. Then bolt the drop channels #24 to the tube slide box #25. Install set screws in #25. Torque all bolts to the specifications found in this manual.
6. Repeat same instructions for the opposite side.

### NOTE:

View A, B, & C use parts list on next page.



## WARNING

**To prevent serious injury or death**

**On John Deere tractors check hub thickness. If thickness is greater than 2.31" standard bolts will fail.**

**13586 Hex Bolt 22MM-2.50 x 140 MM GR. 10.9 must be used.**

REV 0

AC21005

## SIDEQUEST PARTS BREAKDOWN

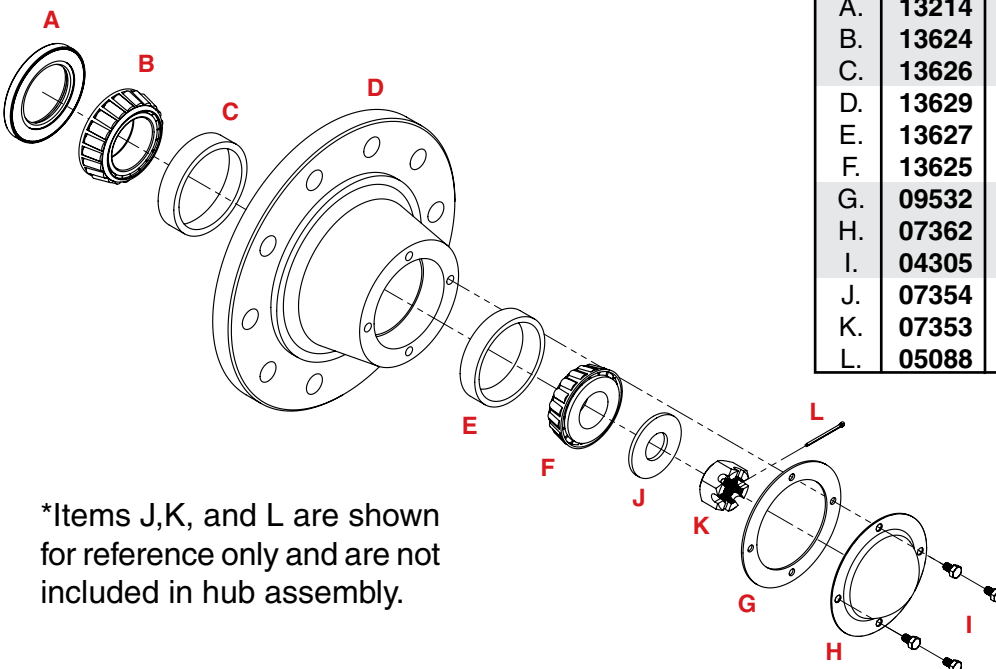
REF. NO.	PART NO.	QTY.	DESCRIPTION
1.	00083	8	1/2"-UNC Hex Hd. Nut
2.	00084	14	1/2" Lockwasher
3.	00085	20	1/2" Flatwasher
4.	00254	20	3/4" Lockwasher
5.	00482	8	1/2"-UNC x 1-3/4" Gr.5 Hex Hd. Bolt
6.	00640	8	1/2"-UNC Jam Nut
7.	00967	16	1/2"-UNC x 1-1/4" Gr.5 Hex Hd. Bolt
8.	01253	6	1/2"-UNC x 2" Gr. 5 Hex Head Bolt
9.	01254	14	1/2"-UNC x 1-1/2" Gr.5 Hex Hd. Bolt
10.	-	-	Original Tractor Washers
11.	02178	16	1/2"-UNC Nylon Lock Nut
12.	02397	4	Lynch Pin
13.	02592	16	3/8"-UNC Nylon Insert Locknut
14.	-	-	Wheel Nuts from Tractor's Duals
15.	06102	12	Set Screw 1/2" x 1-1/4" Cup Point
16.	07435	-	3/4"-NF Wheel Nut
17.	10214-76	16	Tank Hold Down (350 gal. ONLY)
18.	10215-76	2	Tank Hold Down (500 gal. ONLY)
19.	10245	8	Cable Assembly
20.	10918-76	2	Top Angle Support (500 gal. ONLY)
21.	10923-76	3	Support Crossbar (500 gal. ONLY)

22.	10924-76	12	Tank Support Tube (500 gal. ONLY)
24.	13022-76	4	Drop Channel
25.	13023-76	4	Tube Slide Box
26.	11644-76	2	Mounting Extension Arm, 30" Rows
-	12001-76	2	Mounting Extension Arm, 36" Rows
27.	11651-95	2	Upper Pin
28.	12330-76	2	Tank Carrier
29.	13024	16	Agco Bolt 22mm x 100mm D-Head Stud
30.	13211	2	10 Bolt Hub Spacer
31.	13216-35	2	Spindle/Hub Assembly
-	13215	-	Spindle Only
32.	13217	20	3/4"-NF x 2-1/2" Gr.5 Hex Hd Bolt
33.	13222	20	Bolt, 22MM-2.50 x 120MM Gr10.9 John Deere, Case IH MX Magnum & TG New Holland
-	13586	20	Bolt, 22MM-2.50 x 140MM Gr 10.9 John Deere Heavy Duty
-	13587	20	Bolt, .875-9 x 4.00 Gr 8 Case IH 71, 72 & 89
-	13588	20	Bolt, .875NF x 4.00 Gr 8 Ford Genesis
34.	14989	2	10 Bolt Cast Hub Spacer
35.	13568	20	3/4"-NF x 3" Gr.5 Hex Head Bolt

### NOTE:

Refer to this parts list for parts shown on pages 13, 15 & 16.

## 5902 Hub Breakdown

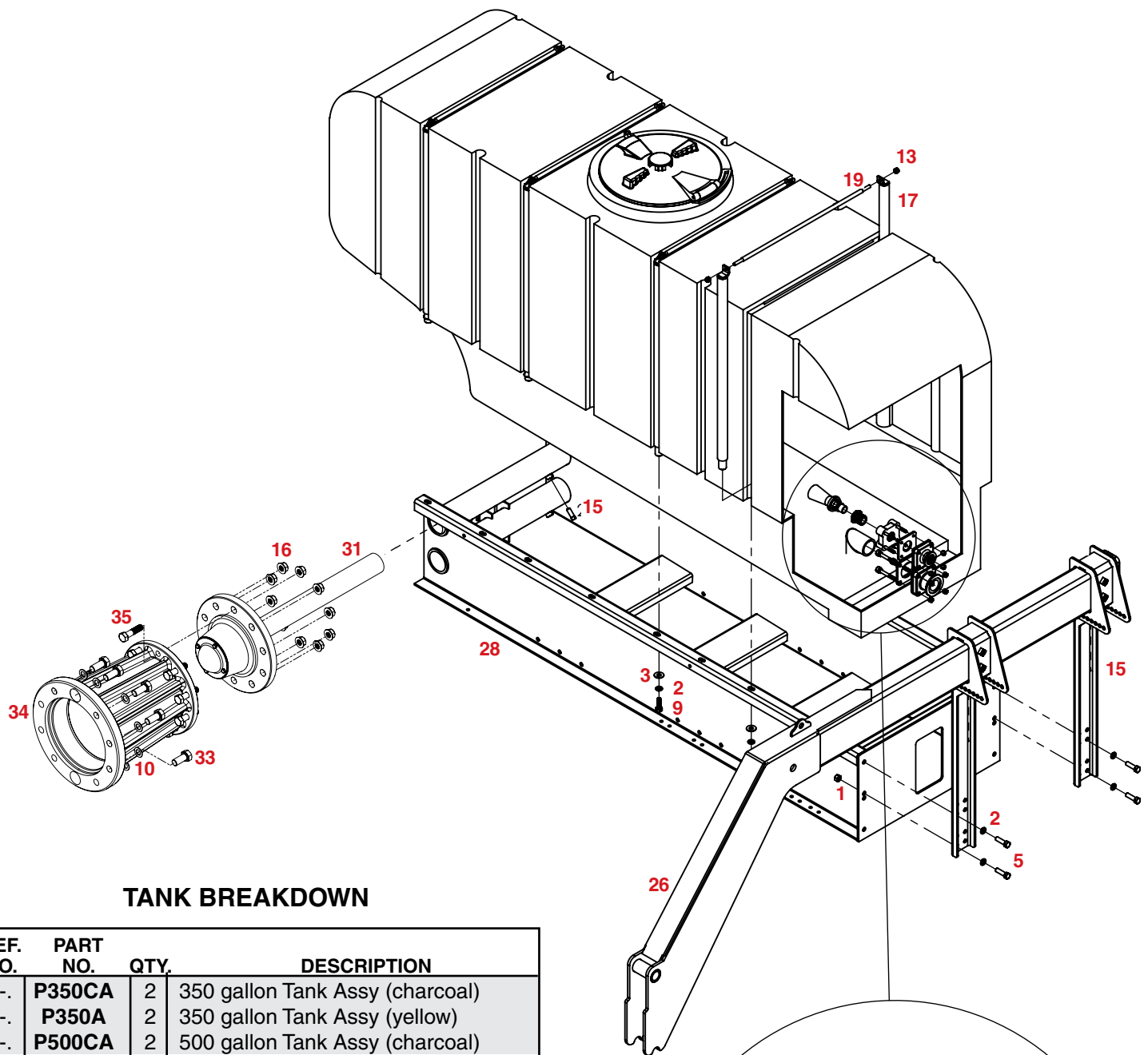


\*Items J,K, and L are shown for reference only and are not included in hub assembly.

REF. NO.	PART NO.	QTY.	DESCRIPTION
A.	13214	1	Oil Seal
B.	13624	1	Inner Cone Bearing, Timken
C.	13626	1	Inner Cup, Timken
D.	13629	1	Hub, includes Inner/Outer Cups
E.	13627	1	Outer Cup, Timken
F.	13625	1	Outer Cone Bearing, Timken
G.	09532	1	Hub Cap Gasket
H.	07362	1	Hub Cap
I.	04305	4	5/16" x 1/2" Hex Head Bolt
J.	07354	1	3" x 1-21/64" x 3/16" Washer
K.	07353	1	1-1/4"NF Castle Nut
L.	05088	1	3/16" x 2-1/2" Cotter Pin



## 350 GALLON SIDEQUEST PARTS BREAKDOWN 30" - 36" ROW SPACING



### TANK BREAKDOWN

REF. NO.	PART NO.	QTY.	DESCRIPTION
--	<b>P350CA</b>	2	350 gallon Tank Assy (charcoal)
--	<b>P350A</b>	2	350 gallon Tank Assy (yellow)
--	<b>P500CA</b>	2	500 gallon Tank Assy (charcoal)
--	<b>P500A</b>	2	500 gallon Tank Assy (yellow)
--	<b>5486A</b>	1	Replacement Lid Assy
P1.	<b>09941</b>	1	Agitator Jet
P2.	<b>10267</b>	1	Siphon Tube
P3.	<b>BRB1034</b>	1	1" MPT to 3/4" FPT Reducer Bushing
P4.	<b>FTF100</b>	1	1" Flanged Tank Fitting
P5.	<b>FTF200</b>	1	2" Flanged Tank Fitting

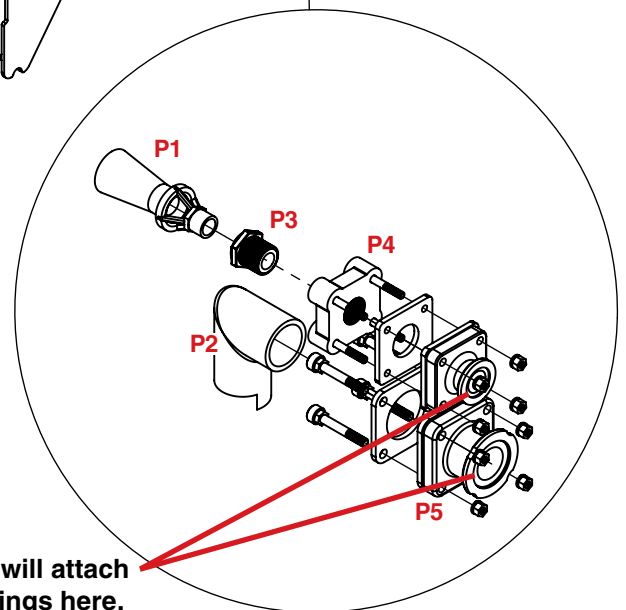
*\* When ordering replacement tanks, please specify if the tank fitting you need is either a right or left or center.*

*\* Items P1, P2, P3, P4, and P5 included when ordering the tank assy*

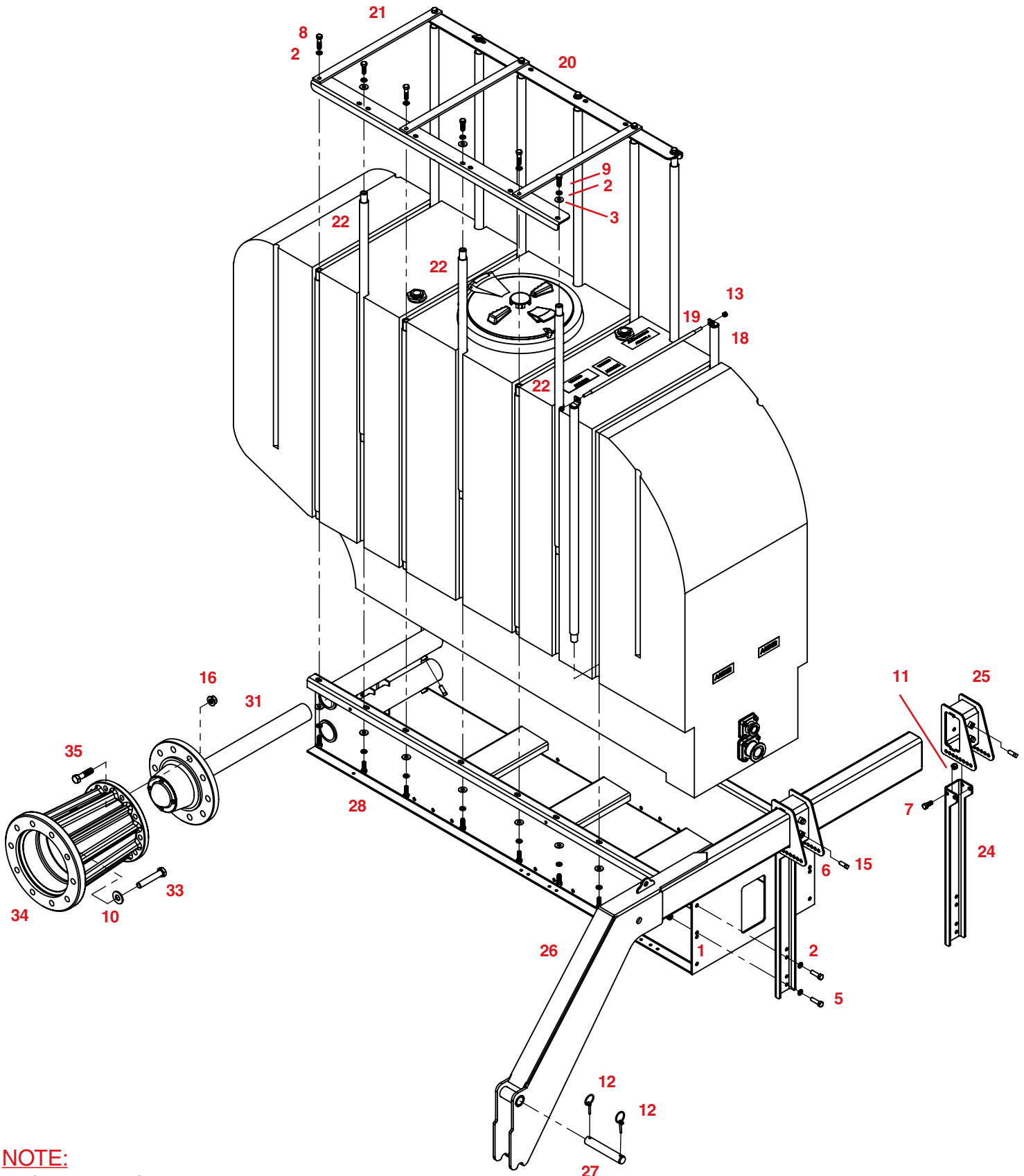
#### NOTE:

Refer to p.14 for replacement part numbers.

**NOTE:** All units will attach elbow fittings here.



# 500 GALLON SIDEQUEST PARTS BREAKDOWN 30" - 36" ROW SPACING



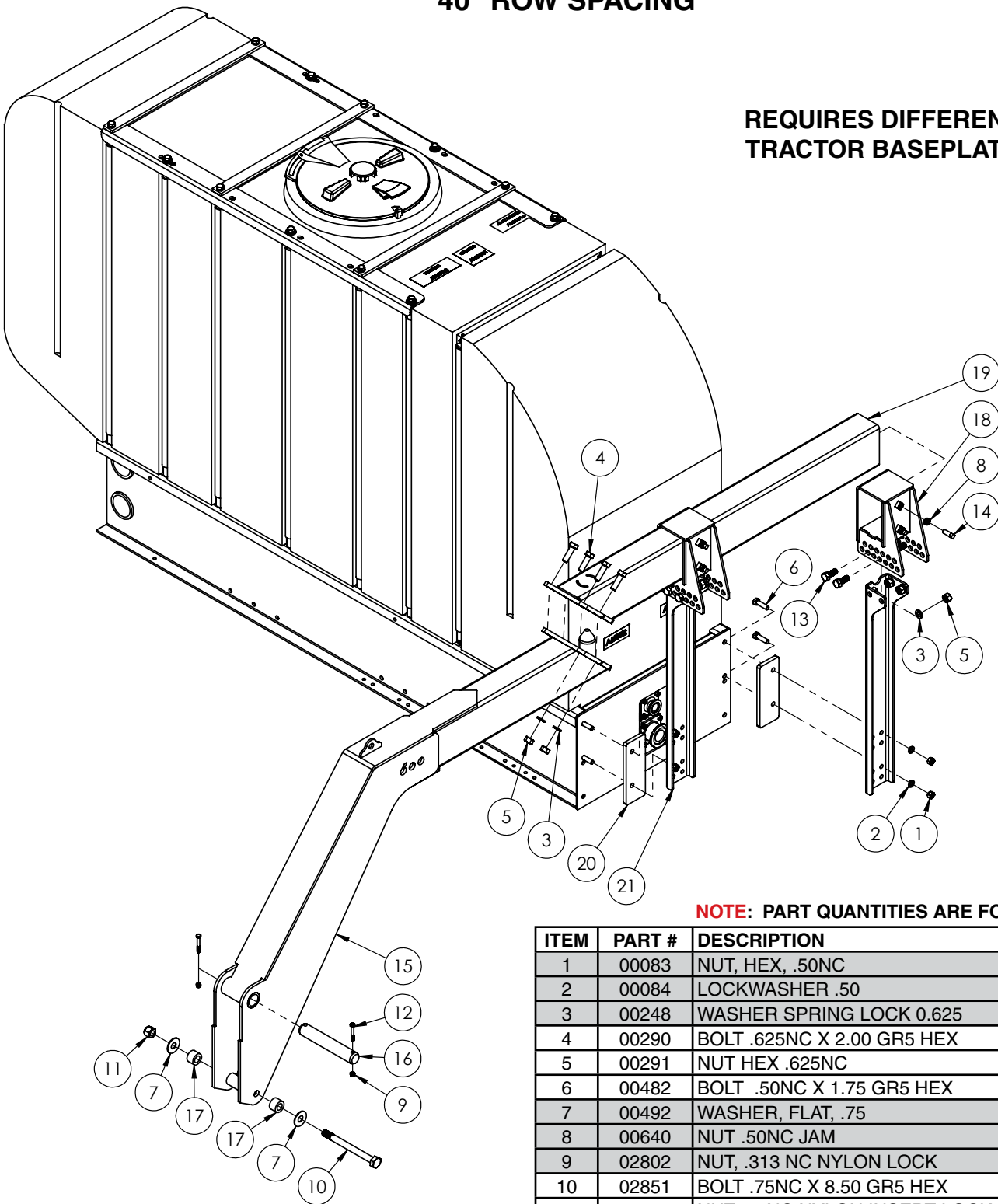
## NOTE:

Refer to p.14 for replacement part numbers.



# WIDE ROW HEAVY DUTY MOUNTING ARM BREAKDOWN 40" ROW SPACING

**REQUIRES DIFFERENT  
TRACTOR BASEPLATE**



**#20 IS OPTIONAL SPACER**

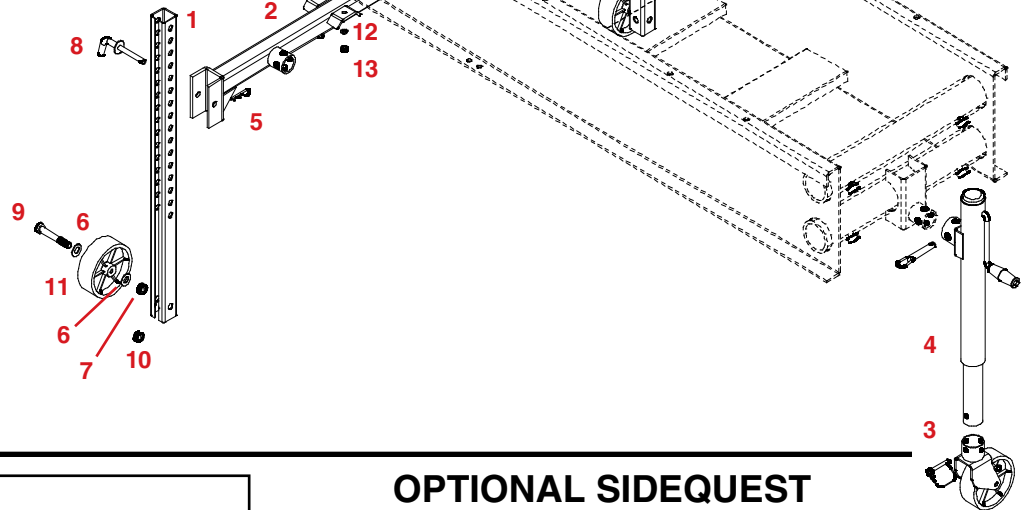
**NOTE: PART QUANTITIES ARE FOR ONE SIDE**

ITEM	PART #	DESCRIPTION	QTY
1	00083	NUT, HEX, .50NC	4
2	00084	LOCKWASHER .50	4
3	00248	WASHER SPRING LOCK 0.625	12
4	00290	BOLT .625NC X 2.00 GR5 HEX	4
5	00291	NUT HEX .625NC	12
6	00482	BOLT .50NC X 1.75 GR5 HEX	4
7	00492	WASHER, FLAT, .75	2
8	00640	NUT .50NC JAM	4
9	02802	NUT, .313 NC NYLON LOCK	2
10	02851	BOLT .75NC X 8.50 GR5 HEX	1
11	02961	NUT .75NC NYLON INSERT LOCK	1
12	03547	BOLT .313NC X 2.25 GR5 HEX	2
13	04051	BOLT, .625 NC X 1.50 HEX HEAD GR.5	8
14	06102	SET SCREW .50NC X 1.25 CUP	4
15	13796-76	OVERHEAD SQ1200	1
16	13802-95	OVERHEAD PIN	1
17	13816-95	BUSHING 1.5 X 1	2
18	15429-76	SLIDE TUBE ASSEMBLY	2
19	15623-76	EXTENSION ARM ASSY, WIDE ROW	1
20	16594-76	SPACER F/ 7/1000 SIDEQUEST WIDE	2
21	16595-76	DROP CHANNEL, 7/1000 EXTRA WIDE	2

## OPTIONAL SIDEQUEST JACK STANDS BREAKDOWN

REF. NO.	PART NO.	QTY.	DESCRIPTION
1.	07551-76	4	Wheel Stand
2.	10199-76	2	Stand Mounting Bracket
3.	10243	2	Caster Wheel Assembly
4.	10244-76	2	Adjustable Jack Assembly
5.	00182	2	Hair Pin, 7 gauge
6.	00477	8	5/8" Flatwasher
7.	00489	4	5/8"-UNC Jam Nut
8.	01718-95	4	Lock pin
9.	02496	4	5/8"-UNC x 4" Hex Hd Bolt Gr.5
10.	02587	4	5/8"-UNC Nylon Insert Locknut
11.	04445	4	6" x 2" Black Wheel with bushing
12.	00060	6	3/8" Lockwasher
13.	00061	6	3/8"-UNC Hex Hd. Nut
14.	00907	6	3/8"-UNC x 1" Hex Hd. Bolt Gr.5

Please order replacement parts by  
PART NO. and DESCRIPTION.



### Notes:

Adjustable jack may be used in two locations.  
On the outside of the Stand Mount Bracket  
as well as in the rear of the Tank holder.

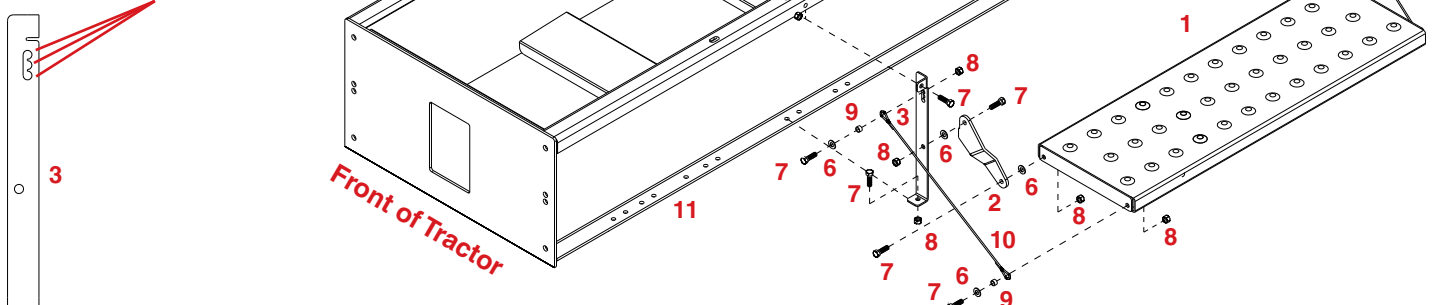
REF. NO.	PART NO.	QTY.	DESCRIPTION
1.	11446-76	2	External Step
2.	11447-76	2	Left Step Support
3.	11448-76	2	Left Step Mount
4.	11449-76	2	Right Step Mount
5.	11450-76	2	Right Step Support
6.	00059	20	3/8" Flatwasher
7.	00523	16	3/8" x 1-1/4" Hex Head Bolt (Gr. 5)
8.	02592	16	3/8" Nylon Insert Locknut
9.	07919-95	8	Bushing
10.	11451	4	Support Cable
11.	12330-76	1	Tank Carrier (Not Included w/Kit)

Please order replacement parts by  
PART NO. and DESCRIPTION.

## OPTIONAL SIDEQUEST FOLD-AWAY EXTERNAL STEP PARTS BREAKDOWN

**NOTE:** Part quantities are for both sides, but  
only one side is shown.

**NOTE:** TO ADJUST ANGLE OF STEP  
ADJUST THE CABLES TOP BOLT  
TO ONE OF 3 HOLE POSITIONS.



# SPRAYER CHECKLIST:

Downtime caused by field breakdowns is costly and time consuming. Many breakdowns can be eliminated by periodic equipment maintenance. By spending time reviewing this checklist before seasonal spraying application time and following proper after season care, you can save time and money later.



## **WARNING:** To Prevent Serious Injury Or Death

- Keep hands, feet, and loose clothing away from rotating parts.
- Wear protective clothing recommended by your chemical and fertilizer manufacturer when working with chemicals.

### Check Before Going To The Field :

#### 1. NOZZLES

Check tip for excessive wear by checking for grooves in or near tip opening. Check nozzle spacing by starting at center and working outwards. Check boom for proper height.

#### 2. HOSES

Check all hoses for worn or soft spots. Be sure all hose clamps are tightened and hoses are not kinked or pinched. Check for leakage in any lines.

#### 3. TANK

Remove and clean agitator orifices. Check orifices for excessive wear by checking for grooves in or near orifice opening. Inspect fitting and grommets to insure they are in good condition.

#### 4. CONTROLS

Check for leakage, plugging, or wear on all valves, fittings, etc. Clean off any build up of foreign material.

#### 5. PUMP

Check to be sure pump turns freely.

#### 6. FRAME

Be sure all bolts are tightened.

#### 7. REPLACEMENT PARTS

Replace all worn or damaged parts.

### After Season Care:

**NOTE:** It is important to wear proper safety equipment when cleaning the SIDEQUEST . See your chemical or fertilizer package for this information.

1. After spraying chemicals, run water mixed with cleaners through tank, pump and all hose hookups. If wettable powder dries out in the system, it is very difficult to put back into suspension and can cause malfunction, damage or injury.
2. When cleaned, tank should have all openings closed or covered to keep dirt from entering.
3. Pump should be flushed with soluble oil and pump ports plugged to keep out moisture and air.
4. Disassemble tips and rinse with water or cleaning solution. (Appropriate for chemical sprayed).
5. Clean tip opening with a wooden toothpick. Never use wire or hard object that could distort opening.
6. Dispose of all unused chemicals or solutions in a proper and ecologically sound manner.
6. Water rinse and dry tips before storing.

---

**NOTE:** DEMCO does not and will not make any recommendations concerning application of various chemicals or solutions. These recommendations relate to either amount or procedure of materials applied. If you have any questions regarding application of certain chemicals or solutions, contact your chemical supplier and follow chemical manufacturer recommendations.



4010 320th St., Boyden, IA. 51234

Phone: (712) 725-2311

Fax: (712) 725-2380

Toll Free: 1-800-54DEMCO (1-800-543-3626)

**Demco warranty policies, operator manuals, and product registration  
can be found online:**

**[www.demco-products.com](http://www.demco-products.com)**

