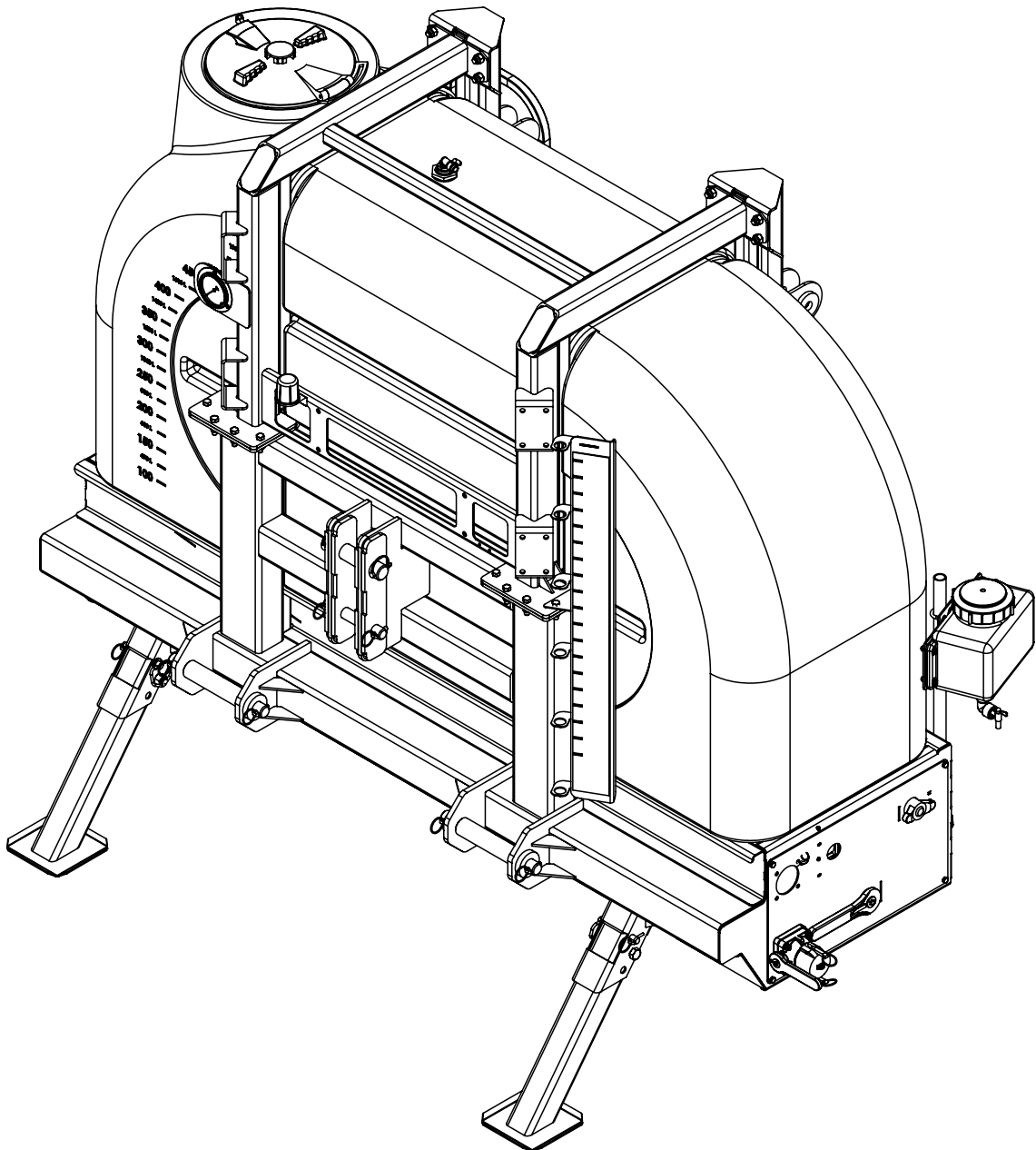




Doing Our Best to Provide You the Best

AC20104, Rev 5
6/19

REAR MOUNT 600 Gallon



OPERATOR MANUAL

INTRODUCTION

Thank you for purchasing a Demco sprayer. We feel you have made a wise choice and hope you are completely satisfied with your new sprayer. If you have any questions regarding the applications of certain solutions or chemicals, contact your chemical supplier and follow chemical manufacturer recommendations as well as all licensing and use restrictions or regulations.

WARRANTY POLICY, OPERATOR MANUALS & REGISTRATION

Go online to www.demco-products.com to review Demco warranty policies, operator manuals, and register your Demco product.



WARNING: TO AVOID PERSONAL INJURY OR PROPERTY DAMAGE, OBSERVE FOLLOWING INSTRUCTIONS:

Chemicals are dangerous. Know exactly what you’re going to do and what is going to happen before attempting to work with these products. Improper selection or use can injure people, animals, plants and soil.

Always wear protective clothing such as coveralls, goggles and gloves when working with chemicals or sprayer.

Be sure to dispose of all unused chemicals or solutions in a proper and ecologically sound manner.

GENERAL INFORMATION

1. Unless otherwise specified, high-strength (grade5) (3 radial-line head markings) hex head bolts are used throughout assembly of this sprayer.

2. Whenever terms **"LEFT"** and **"RIGHT"** are used in this manual it means from a position behind sprayer and facing forward.
3. When placing a parts order, refer to this manual for proper part numbers and place order by **PART NO. and DESCRIPTION.**

TABLE OF CONTENTS

General Information.....

Safety

Safety Sign Locations.....

Bolt Torque.....

Frame Parts Breakdown & Parts List.....

Plumbing Parts Breakdown & Parts List.....

Boom Attachment Breakdown & Parts List.....

60' & 90' Boom Rest Breakdown & Parts List

Rinse Tank Breakdown & Parts List.....

Chemical Eductor Breakdown & Parts List.....

Foam Marker Breakdown & Parts List

Raven Control System.....

Sprayer Checklist.....

After Season Care

2

3-9

10-12

13

14-15

16-17

18

19

20-21

22-23

24

25

26

27

TAKE NOTE! THIS SAFETY ALERT SYMBOL FOUND THROUGHOUT THIS MANUAL IS USED TO CALL YOUR ATTENTION TO INSTRUCTIONS INVOLVING YOUR PERSONAL SAFETY AND SAFETY OF OTHERS. FAILURE TO FOLLOW THESE INSTRUCTIONS CAN RESULT IN INJURY OR DEATH!



THIS SYMBOL MEANS

ATTENTION

BECOME ALERT

YOUR SAFETY IS INVOLVED!

SIGNAL WORDS:

This manual uses the following signal words--**DANGER**, **WARNING**, and **CAUTION**-- with safety messages. The appropriate signal word has been selected using the following guidelines.

DANGER:

Indicates an imminently hazardous situation that, if not avoided, will result in death or serious injury. This signal word is to be limited to most extreme situations typically for machine components which, for functional purposes, cannot be guarded.

WARNING:

Indicates a potentially hazardous situation that, if not avoided, could result in death or serious injury, and includes hazards that are exposed when guards are removed. It may also be used to alert against unsafe practices.

CAUTION:

Indicates a potentially hazardous situation that, if not avoided, may result in minor or moderate injury. It may also be used to alert against unsafe practices.

If you have questions not answered in this manual, require additional copies, or if your manual is damaged, please contact your dealer or DEMCO, 4010 320th Street, Boyden, IA 51234
ph: (712) 725-2311 or Toll Free: 1-800-543-3626 Fax: (712) 725-2380 or 1-800-845-6420
<http://www.demco-products.com>



SAFETY...YOU CAN LIVE WITH IT



EQUIPMENT SAFETY GUIDELINES

Every year many accidents occur which could have been avoided by a few seconds of thought and a more careful approach to handling equipment. You, the operator, can avoid many accidents by observing the following precautions in this section. To avoid personal injury, study the following precautions and insist those working with you, or you yourself, follow them.

In order to provide a better view, certain illustrations in your owners manual may show an assembly with a safety shield removed. However, equipment should never be operated in this condition. Keep all shields in place. If shield removal becomes necessary for repairs, replace shield prior to use.

Replace any caution, warning, danger or instruction safety decal that is not readable or is missing. Location of such decals is indicated in this booklet.

Do not attempt to operate this sprayer under the influence of alcohol or drugs.

Review safety instructions with all users annually.

Operator should be a responsible adult. **DO NOT ALLOW PERSONS TO OPERATE OR ASSEMBLE THIS UNIT UNTIL THEY HAVE DEVELOPED A THOROUGH UNDERSTANDING OF SAFETY PRECAUTIONS AND HOW IT WORKS.**

To prevent injury or death, use a tractor equipped with a roll over protective system (ROPS). Do not paint over, remove, or deface any safety signs or warning decals on your sprayer. Observe all safety signs and practice instructions on them.

Never exceed limits of sprayer. If its ability to do a job, or to do so safely is in question **DON'T TRY IT.**



LIGHTING AND MARKING

It is the responsibility of operator to know lighting and marking requirements of local highway authorities and to install and maintain equipment to provide compliance with regulations. Add extra lights when transporting at night or during periods of limited visibility.

Lighting kits are available from your dealer or from manufacturer.

**SAFETY SIGN CARE**

- Keep safety signs clean and legible at all times.
- Replace safety signs that are missing or have become illegible.
- Replacement parts that displayed a safety sign should also display current sign.
- Safety signs are available from your distributor, dealer parts department, or factory.

How to install safety signs:

- Be sure that installation area is clean and dry.
- Decide on exact position before you remove backing paper.
- Remove smallest portion of split backing paper.
- Align decal over specified area and carefully press small portion with exposed sticky backing in place.
- Slowly peel back remaining paper and carefully smooth remaining portion of decal into place.
- Small air pockets can be pierced with a pin and smoothed out using piece of decal backing paper.

**REMEMBER**

Your best assurance against accidents is a careful and responsible operator. If there is any portion of this manual or function you do not understand, contact your local authorized dealer or manufacturer.

**BEFORE OPERATION:**

- Carefully study and understand this manual.
- Do not wear loose-fitting clothing which may catch in moving parts.
- Always wear protective clothing and substantial shoes.
- It is recommended that suitable protective hearing and eye protection be worn.
- Operator may come in contact with certain materials which may require specific safety equipment relative to handling of such materials. (Examples: extreme dust, molds, fungus, bulk fertilizers, etc.)
- Keep wheel and lug nuts tightened to specified torque.
- Assure that agricultural implement tires are inflated evenly.
- Give sprayer a visual inspection for any loose bolts, worn parts, or cracked welds, and make necessary repairs. Follow maintenance safety instructions included in this manual.
- Be sure there are no tools lying on or in equipment.
- Do not use sprayer until you are sure that area is clear, especially around children and animals.
- Don't hurry learning process or take sprayer for granted. Ease into it and become familiar with your new equipment.

- Practice operation of your sprayer and its attachments. Completely familiarize yourself and other operators with its operation before using.
- Use a tractor equipped with Roll Over Protection System (ROPS) and fasten your seatbelt prior to starting the engine.
- Manufacturer does not recommend usage of a tractor with the ROPS removed.
- Move tractor wheels to widest recommended settings to increase stability.
- Do not allow anyone to stand between tongue or hitch and towing vehicle when backing up to equipment.



DURING OPERATION

- Beware of bystanders, **PARTICULARLY CHILDREN!** Always look around to make sure that it is safe to start engine of towing vehicle or move unit. This is particularly important with higher noise levels and quiet cabs, as you may not hear people shouting.
- **NO PASSENGERS ALLOWED** - Do not carry passengers anywhere on or in tractor or sprayer.
- Keep hands and clothing clear of moving parts.
- Do not clean, lubricate, or adjust your sprayer while it is moving.
- When halting operation, even periodically, set tractor or towing vehicles brakes, disengage PTO, shut off engine, and **remove ignition key**.
- Pick the most level possible route when transporting across fields. Avoid edges of ditches, gullies, and steep hillsides.
- Be extra careful when working on inclines.
- Periodically clear equipment of brush, twigs or other materials to prevent buildup of dry combustible materials.
- Maneuver tractor or towing vehicle at safe speeds.
- Avoid overhead wires or other obstacles. Contact with overhead lines could cause serious injury or death.
- Avoid loose gravel, rocks, and holes; they can be dangerous for equipment operation or movement.
- Allow for sprayer length when making turns.
- Do not walk or work under raised components or attachments unless securely positioned and blocked.
- Keep all bystanders, pets, and livestock clear of work area.
- Operate towing vehicle from operators seat only.
- Never stand alongside of unit with engine running or attempt to start engine and/or operate machine while standing alongside of unit.
- Never leave running equipment unattended.
- As a precaution, always recheck hardware on equipment following every 100 hours of operation. Correct all problems. Follow maintenance safety procedures.

**FOLLOWING OPERATION**

- Following operation, or when unhitching, stop tractor or towing unit, set brakes, disengage PTO and all power drives, shut off engine and **remove ignition key**.
- Store sprayer in an area away from human activity.
- Do not park sprayer where it will be exposed to livestock for long periods of time. Damage and livestock injury could result.
- Do not permit children to play on or around stored sprayer.
- Make sure all parked machines are on a hard, level surface and engage all safety devices.
- Wheel chocks may be needed to prevent unit from rolling.



HIGHWAY AND TRANSPORT OPERATIONS

- **SAFETY CHAINS:** If equipment is going to be transported on a public highway, always follow state and local regulations regarding safety chains and auxiliary lighting. Be sure to check with local law enforcement agencies for your own particular regulations. If required, safety chains should be obtained and installed. Only safety chains (not elastic or nylon/plastic tow straps) should be used to retain connection between towing and towed machines in event of separation of primary attaching system. Use a high strength, appropriately sized hitch pin with a mechanical retainer and attach safety chains. Criss cross chains under tongue and secure to draw bar cage, mounting loops, or bumper frame.
- Adopt safe driving practices:
 - Keep brake pedals latched together at all times. **NEVER USE INDEPENDENT BRAKING WITH MACHINE IN TOW, LOSS OF CONTROL AND/OR UPSET OF UNIT CAN RESULT.**
 - Always drive at a safe speed relative to local conditions, ensure that your speed is low enough for an emergency stop. Keep speed to a minimum.
 - Reduce speed prior to turns to avoid risk of overturning.
 - Always keep tractor or towing vehicle in gear to provide engine braking when going downhill. Do not coast.
 - Do not drink and drive!
- Comply with state and local laws governing highway safety and movement of farm machinery on public roads.
- Use approved accessory lighting, flags and necessary warning devices to protect yourself and operators of other vehicles on highway during transport. Various safety lights and devices are available from your dealer.
- Use of flashing amber lights is acceptable in most localities. However, some localities prohibit their use. Local laws should be checked for all highway lighting and marking requirements.
- When driving tractor and sprayer on road under 20 m.p.h. (40 kph) at night or during day, use flashing amber warning lights and a slow moving vehicle (SMV) identification emblem.
- Plan your route to avoid heavy traffic.
- Be a safe and courteous driver. Always yield to oncoming traffic in all situations, including narrow bridges, intersections, etc.
- Be observant of bridge load ratings. Do not cross bridges rated lower than gross weight at which you are operating.
- Watch for obstructions overhead and side to side while transporting.
- Always operate equipment in a position to provide maximum visibility at all times. Make allowances for increased length and weight of equipment when making turns, stopping unit, etc.



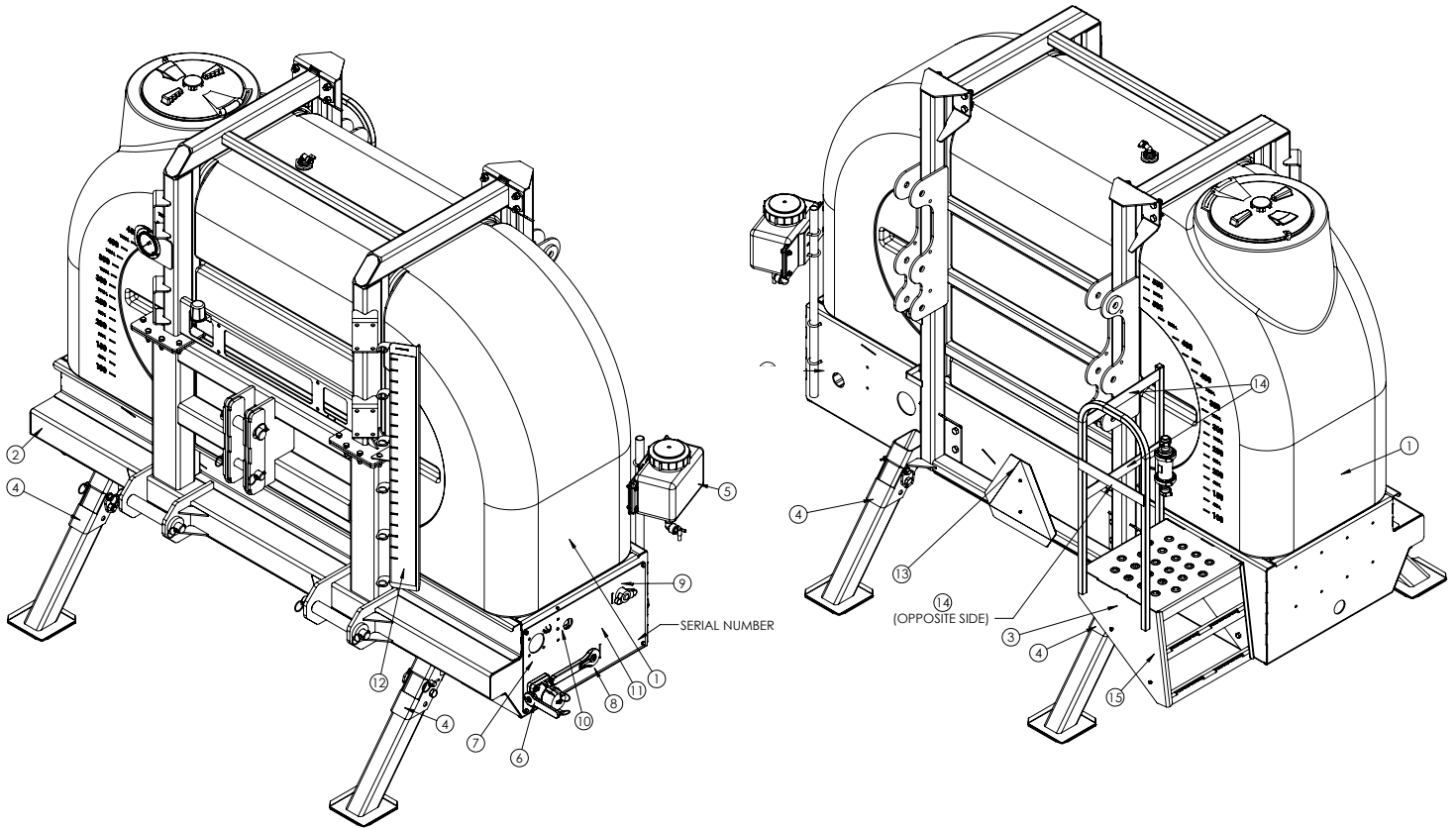
PERFORMING MAINTENANCE

- Good maintenance is your responsibility. Poor maintenance is an invitation to trouble.
- Make sure there is plenty of ventilation. Never operate engine of towing vehicle in a closed building. Exhaust fumes may cause asphyxiation.
- Before working on this machine, stop towing vehicle, set brakes, disengage PTO and all power drives, shut off engine and **remove ignition key**.
- Be certain all moving parts and attachments have come to a complete stop before attempting to perform maintenance.
- Always use safety support and block wheels. Never use a jack to support machine.
- Always use proper tools or equipment for job at hand.
- Use extreme caution when making adjustments.
- Follow torque chart in this manual when tightening bolts and nuts.
- Never use your hands to locate a hydraulic leak on attachments. Use a small piece of cardboard or wood. Hydraulic fluid escaping under pressure can penetrate skin.
- Openings in skin and minor cuts are susceptible to infection from hydraulic fluid. **Without immediate medical treatment, serious infection and reactions can occur.**
- When disconnecting hydraulic lines, shut off hydraulic supply and relieve all hydraulic pressure.
- Replace **all shields** and **guards** after servicing and before moving.
- After servicing, be sure all tools, parts and service equipment are removed.
- Do not allow grease or oil to build up on any steps or platform.
- When replacing bolts, refer to owners manual.
- Refer to bolt torque chart for head identification marking.
- Where replacement parts are necessary for periodic maintenance and servicing, genuine factory replacement parts must be used to restore your equipment to original specifications. Manufacturer will not claim responsibility for use of unapproved parts or accessories and other damages as a result of their use.
- If equipment has been altered in any way from original design, manufacturer does not accept any liability for injury or warranty.
- A fire extinguisher and first aid kit should be kept readily accessible while performing maintenance on this equipment.



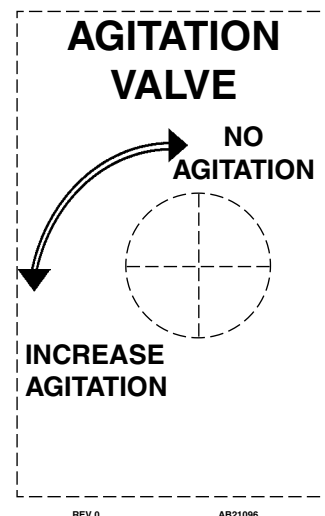
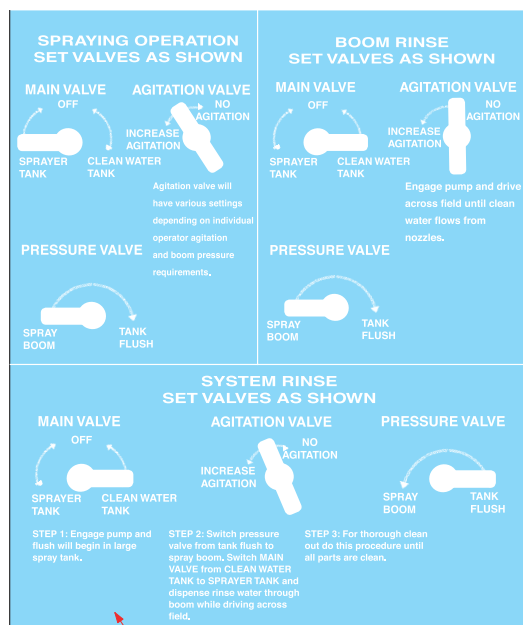
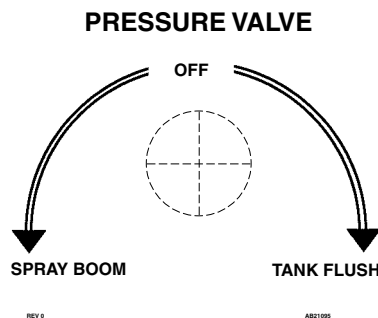
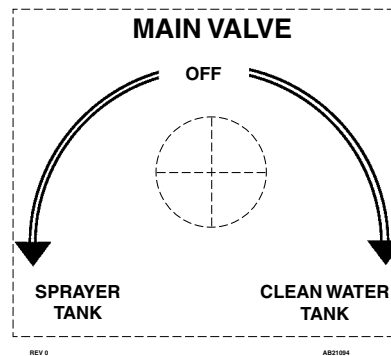
SAFETY SIGN LOCATIONS

Types of safety sign and locations on equipment are shown in illustration below. Good safety requires that you familiarize yourself with various safety signs, type of warning, and area or particular function related to that area, that requires your SAFETY AWARENESS.



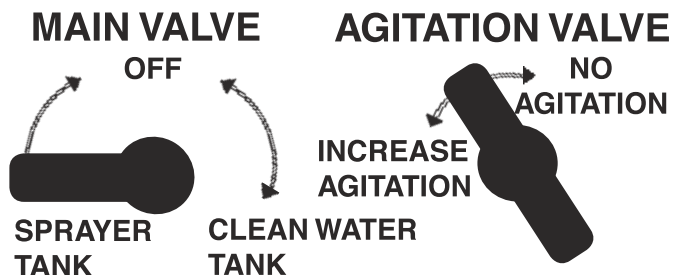
ITEM	PART #	DESCRIPTION	QTY
1.	AA21076	DEMCO RED	2
2.	AA21077	DEMCO WHITE	1
3.	AB21001	SPRAY WARNING ORANGE & BLACK	1
4.	AB21027	PINCH POINTS	4
5.	*AB21024	FRESH WATER ONLY	1
6.	*AB21079	SPRAY TANK	1
7.	*AB21080	CLEAR WATER TANK	1
8.	*AB21094	MAIN VALVE	1
9.	*AB21095	PRESSURE VALVE	1
10.	*AB21096	AGITATION VALVE	1
11.	*AB21097	VALVE PANEL OPERATION INSTRUCTION	1
12.	AB21098	RM600 GALLON MARKER	1
13.	AG21164	DEMCO (CHARCOAL)	1
14.	NA21002	NO STEP	3

*** Not sold separately, only available in decal kit #AB21093**



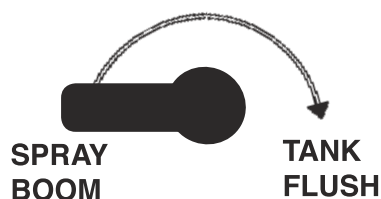
550 G
1990 L
500 G
1800 L
450 G
1610 L
400 G
1420 L
350 G
1230 L
300 G
1040 L
250 G
850 L
200 G
660 L
150 G
470 L
100 G

SPRAYING OPERATION SET VALVES AS SHOWN

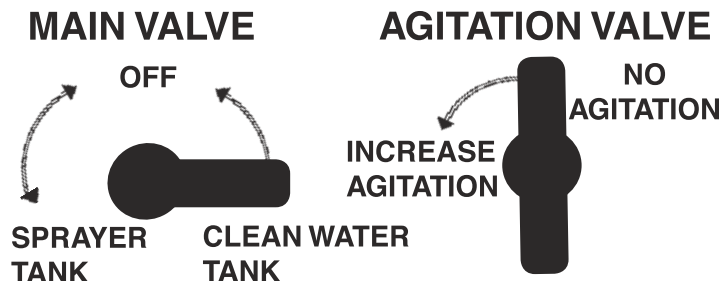


Agitation valve will have various settings depending on individual operator agitation and boom pressure requirements.

PRESSURE VALVE

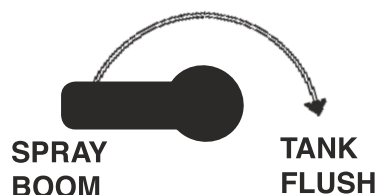


BOOM RINSE SET VALVES AS SHOWN

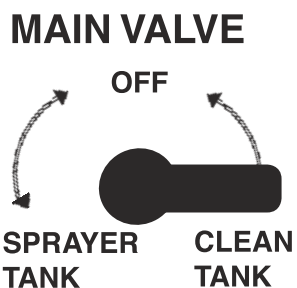


Engage pump and drive across field until clean water flows from nozzles.

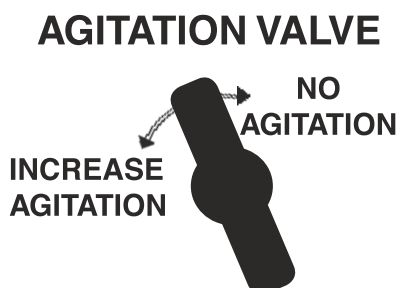
PRESSURE VALVE



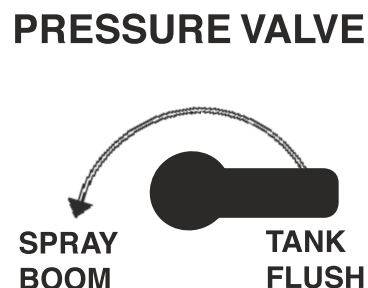
SYSTEM RINSE SET VALVES AS SHOWN



STEP 1: Engage pump and flush will begin in large spray tank.



STEP 2: Switch pressure valve from tank flush to spray boom. Switch MAIN VALVE from CLEAN WATER TANK to SPRAYER TANK and dispense rinse water through boom while driving across field.



STEP 3: For thorough clean out do this procedure until all parts are clean.



TORQUE SPECIFICATION

Torque figures indicated are valid for non-greased or non-oiled threads and heads unless otherwise specified. Therefore, do not grease or oil bolts or capscrews unless otherwise specified in this manual. When using locking elements, increase torque values by 5%.

* GRADE or CLASS value for bolts and capscrews are identified by their head markings.

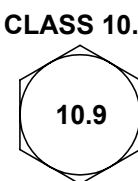
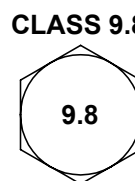
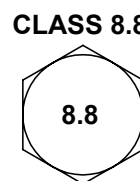
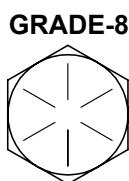
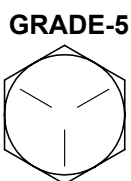
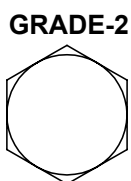
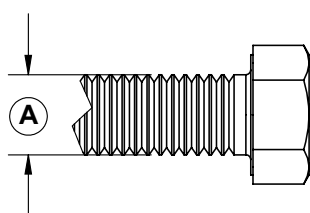
BOLT TORQUE DATA FOR STANDARD NUTS, BOLTS, AND CAPSCREWS.

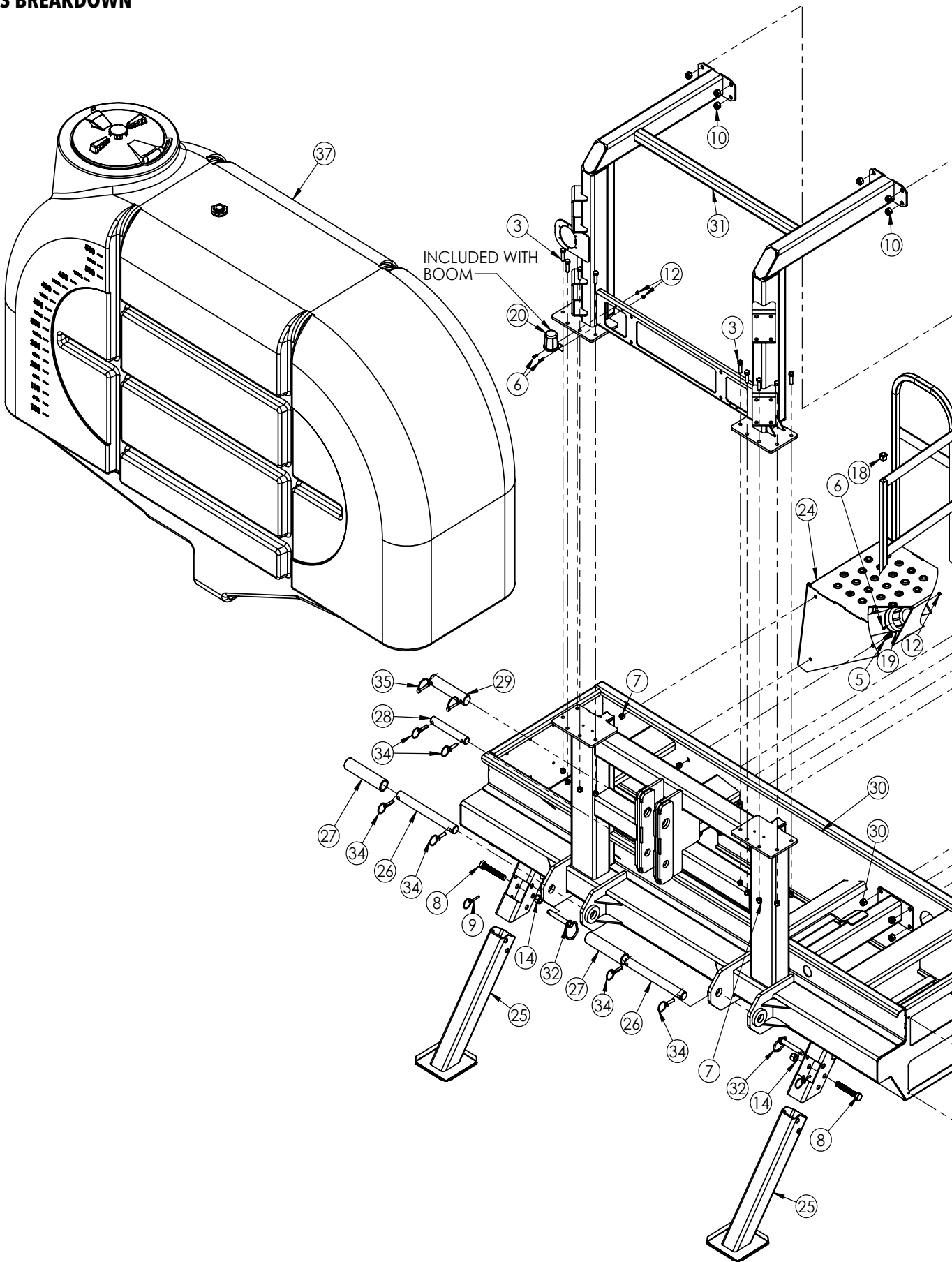
Tighten all bolts to torques specified in chart unless otherwise noted. Check tightness of bolts periodically, using bolt chart as guide. Replace hardware with same grade bolt.

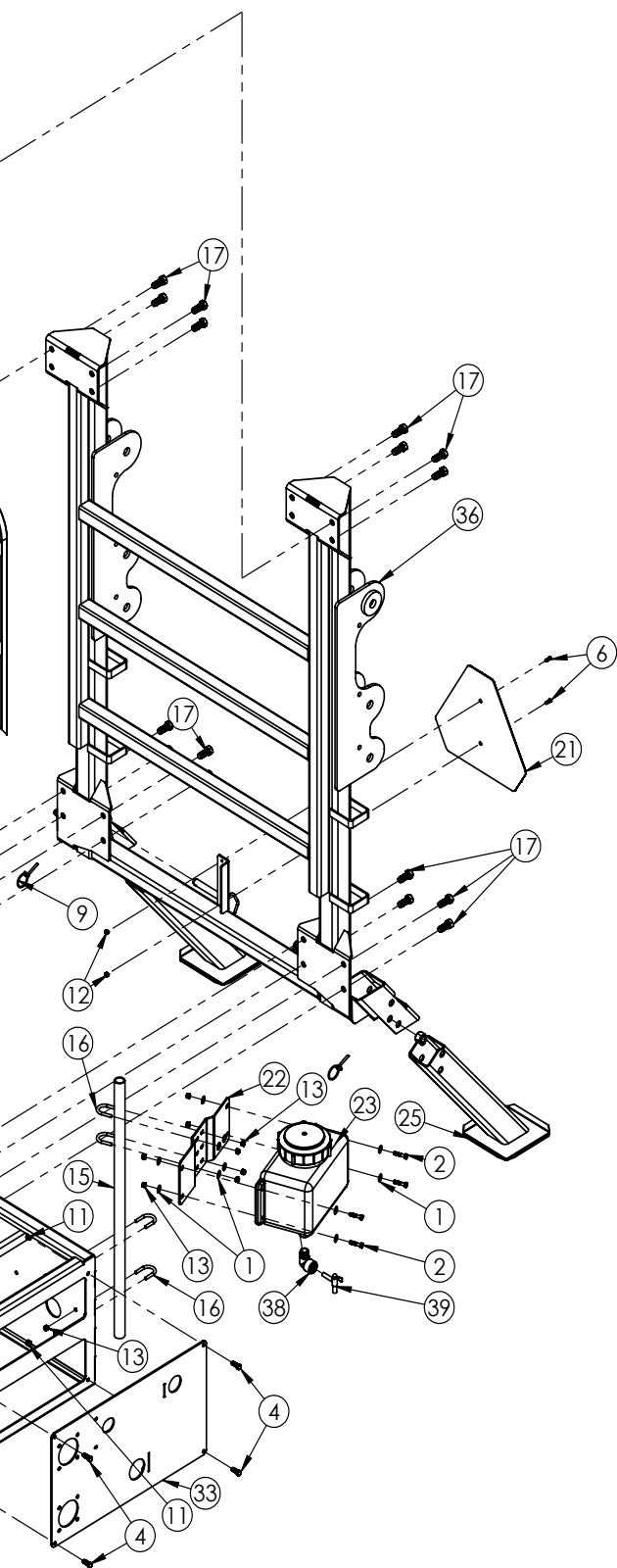
NOTE: Unless otherwise specified, high-strength Grade 5 hex bolts are used throughout assembly of equipment.

Bolt Torque for Standard bolts *						
"A"	GRADE 2		GRADE 5		GRADE 8	
	lb-ft	(N.m)	lb-ft	(N.m)	lb-ft	(N.m)
1/4"	6	(8)	9	(12)	12	(16)
5/16"	10	(13)	18	(25)	25	(35)
3/8"	20	(27)	30	(40)	45	(60)
7/16"	30	(40)	50	(70)	80	(110)
1/2"	45	(60)	75	(100)	115	(155)
9/16"	70	(95)	115	(155)	165	(220)
5/8"	95	(130)	150	(200)	225	(300)
3/4"	165	(225)	290	(390)	400	(540)
7/8"	170	(230)	420	(570)	650	(880)
1"	225	(300)	630	(850)	970	(1310)

Bolt Torque for Metric bolts *						
"A"	CLASS 8.8		CLASS 9.8		CLASS 10.9	
	lb-ft	(N.m)	lb-ft	(N.m)	lb-ft	(N.m)
6	9	(13)	10	(14)	13	(17)
7	15	(21)	18	(24)	21	(29)
8	23	(31)	25	(34)	31	(42)
10	45	(61)	50	(68)	61	(83)
12	78	(106)	88	(118)	106	(144)
14	125	(169)	140	(189)	170	(230)
16	194	(263)	216	(293)	263	(357)
18	268	(363)	--	--	364	(493)
20	378	(513)	--	--	515	(689)
22	516	(699)	--	--	702	(952)
24	654	(886)	--	--	890	(1206)





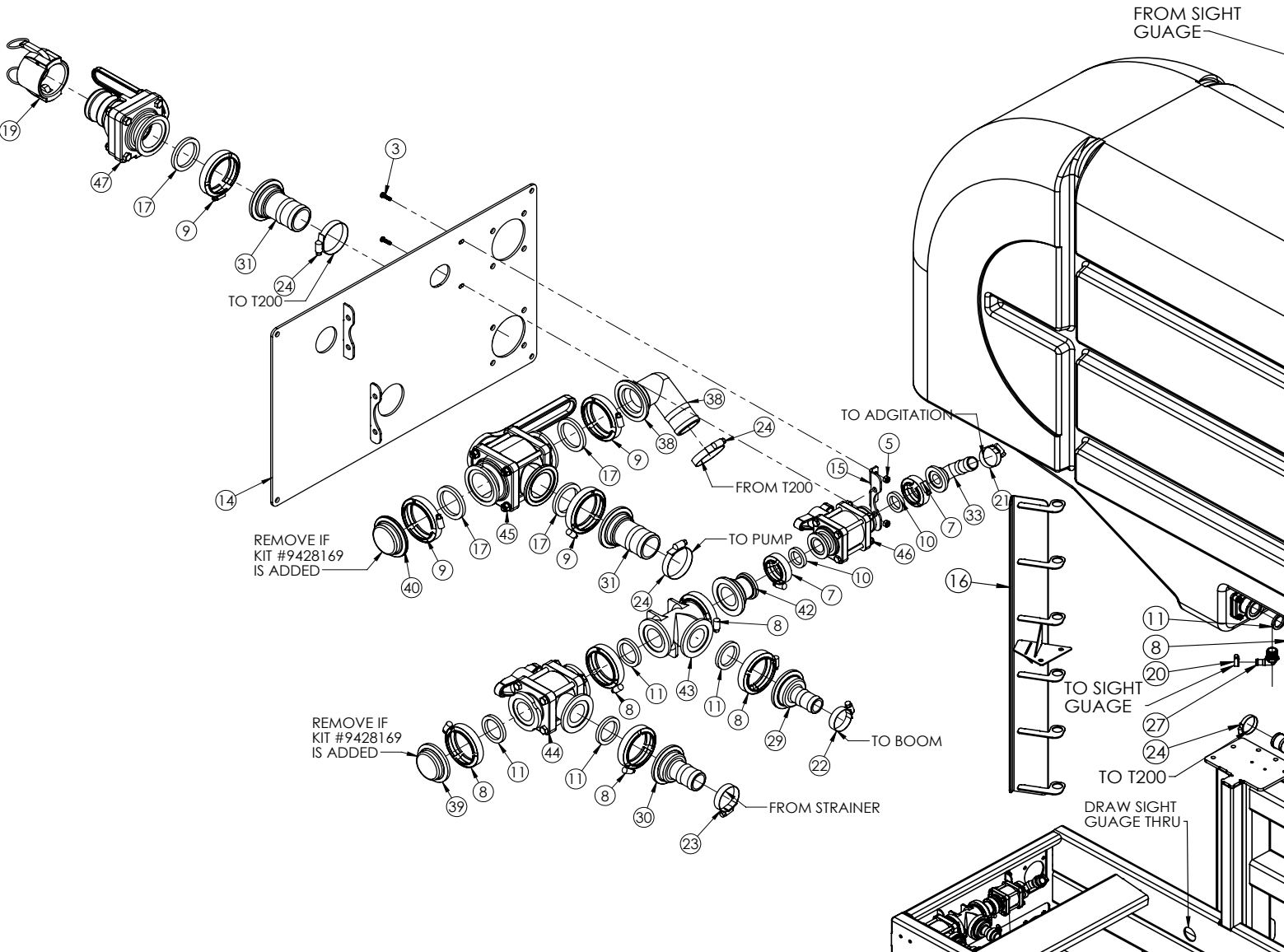


ITEM	PART #	QTY	DESCRIPTION
1.	00004	12	WASHER, FLAT .313
2.	00372	4	BOLT, .313NC X 1.50 HEX GR5
3.	00482	10	BOLT, .50NC X 1.75 HEX GR5
4.	00907	4	BOLT, .375NC X 1.00 HEX GR5
5.	00967	3	BOLT, .50NC X 1.25 HEX GR5
6.	01906	6	BOLT, .25NC X .75 SLOTTED TRUSS
7.	02178	13	NUT, .50NC NYLON LOCK
8.	02397	4	LYNCH PIN, .25 X 1.688
9.	02389	4	BOLT, .75NC X 5.00 HEX GR5
10.	02587	16	NUT, .625 NYLON LOCK
11.	02592	4	NUT, .375NC NYLON LOCK
12.	02772	6	NUT, .25NC NYLON LOCK
13.	02802	12	NUT, .313NC NYLON LOCK
14.	02961	4	NUT, .75NC NYLON LOCK
15.	03252-76	1	EYE WASH MTG TUBE
16.	03283	4	.313NC X 1.375 X 2.00 RND U-BOLT
17.	04051	16	BOLT, .625NC X 1.50 HEX GR5
18.	07875	1	1" SQUARE CAP PLUG
19.	10241	1	OWNER'S MANUAL CANISTER
20.	10277	1	PLUG HOLDER (INC. W/ BOOM)
21.	12126	1	SMV SIGN
22.	14471-76	1	EYE WASH TANK BRACKET
23.	14616	1	2.5 GAL. EYE WASH TANK (INC. LID)
-	PL5A	-	REPLACEMENT LID
24.	14660-76	1	SUPPORT STEP/ PLATFORM
25.	14661-76	4	SUPPORT LEG
26.	14669-95	2	PIN, LOWER CATEGORY 3
27.	14670-95	2	PIN, CATEGORY 4 BUSHING
28.	14671-95	1	PIN, UPPER CATEGORY 3
29.	14672-95	1	PIN, UPPER CATEGORY 4
30.	14673-76	1	MAIN FRAME
31.	14674-76	1	TOP BRACE
32.	14681	4	HITCH PIN
33.	14702-76	1	PLUMBING PANEL
34.	14724	6	LYNCH PIN, .4375 X 1.937
35.	14725	2	SAFETY LOCK PIN, .312 X 2.625
36.	16771-76	1	BOOM LIFT ASSEMBLY
37.	35799	1	TANK POLY 600 GALLON W/ FITTINGS CHARCOAL
38.	BSE34	1	FTG .75"FPT X .75"MPT ELBOW
39.	PL2S	1	SPOUT

Please order replacement parts by **PART NO.** and **DESCRIPTION.**

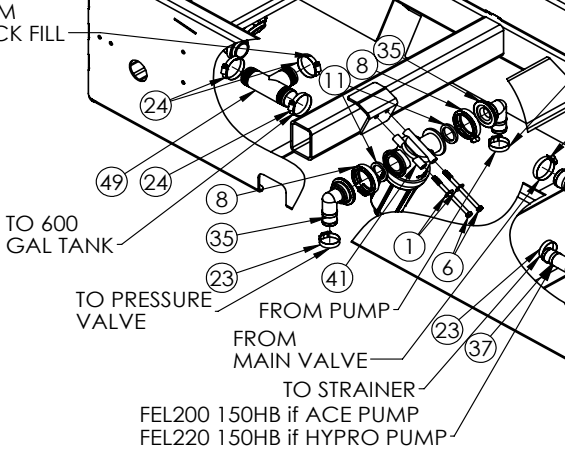
REPLACEMENT PARTS

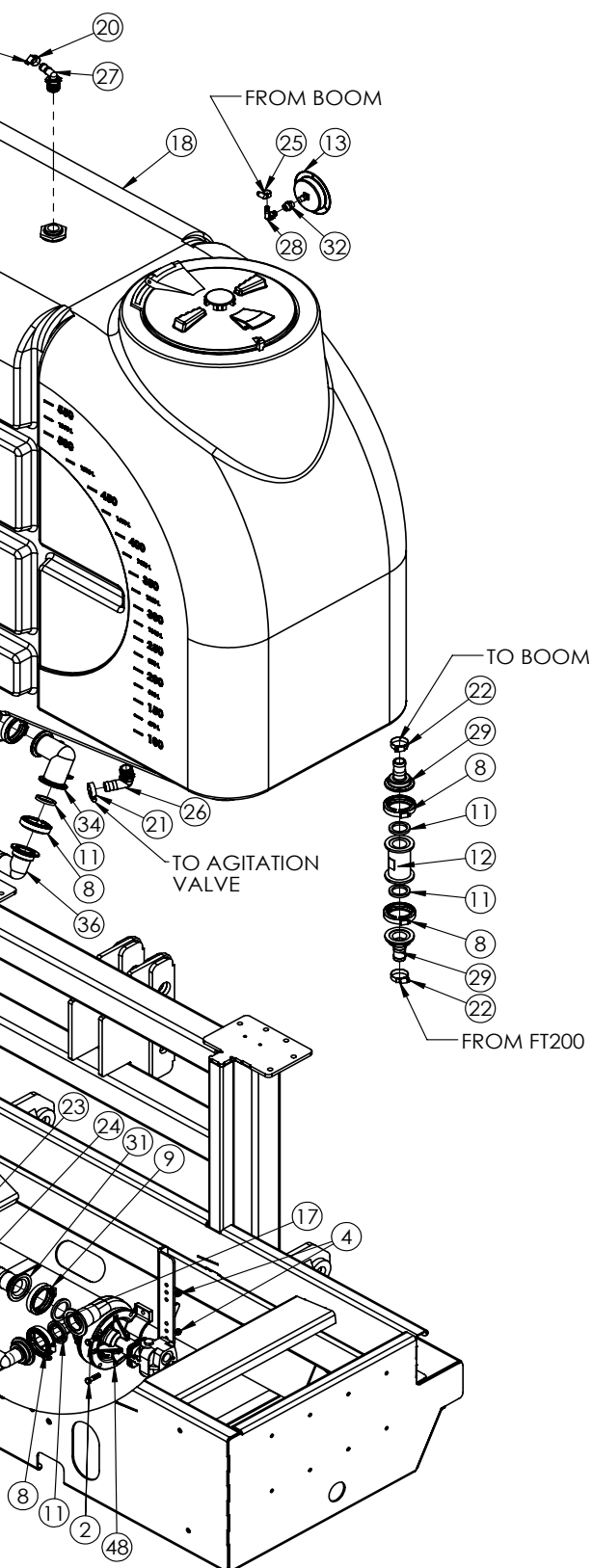
PLUMBING PARTS BREAKDOWN



HOSE BREAKDOWN

PART #	DESCRIPTION	QTY
380RB	.375 HOSE X150" FRONT GAUGE	*
340	.75" HOSE X144" GALLON GAUGE	*
1010RB	1" HOSE X 78" AGITATION VALVE TO AGITATION	*
1140RB	1.25" HOSE X 244" FT200 TO BOOM/ FLOW METER	*
1120RB	1.50" HOSE X 32" PUMP TO STRAINER	*
1120RB	1.50" HOSE X 29" STRAINER TO PRESSURE VALVE	*
S2020	2" HOSE X 39" QUICK FILL TO T200	*
S2020	2" HOSE X 22" T200 TO MAIN VALVE ELBOW	*
S2020	2" HOSE X 36" T200 TO 600 GALLON TANK	*
S2020	2" HOSE X 56" MAIN VALVE TO PUMP	*
* ALL HOSE IS SOLD BY THE FOOT		



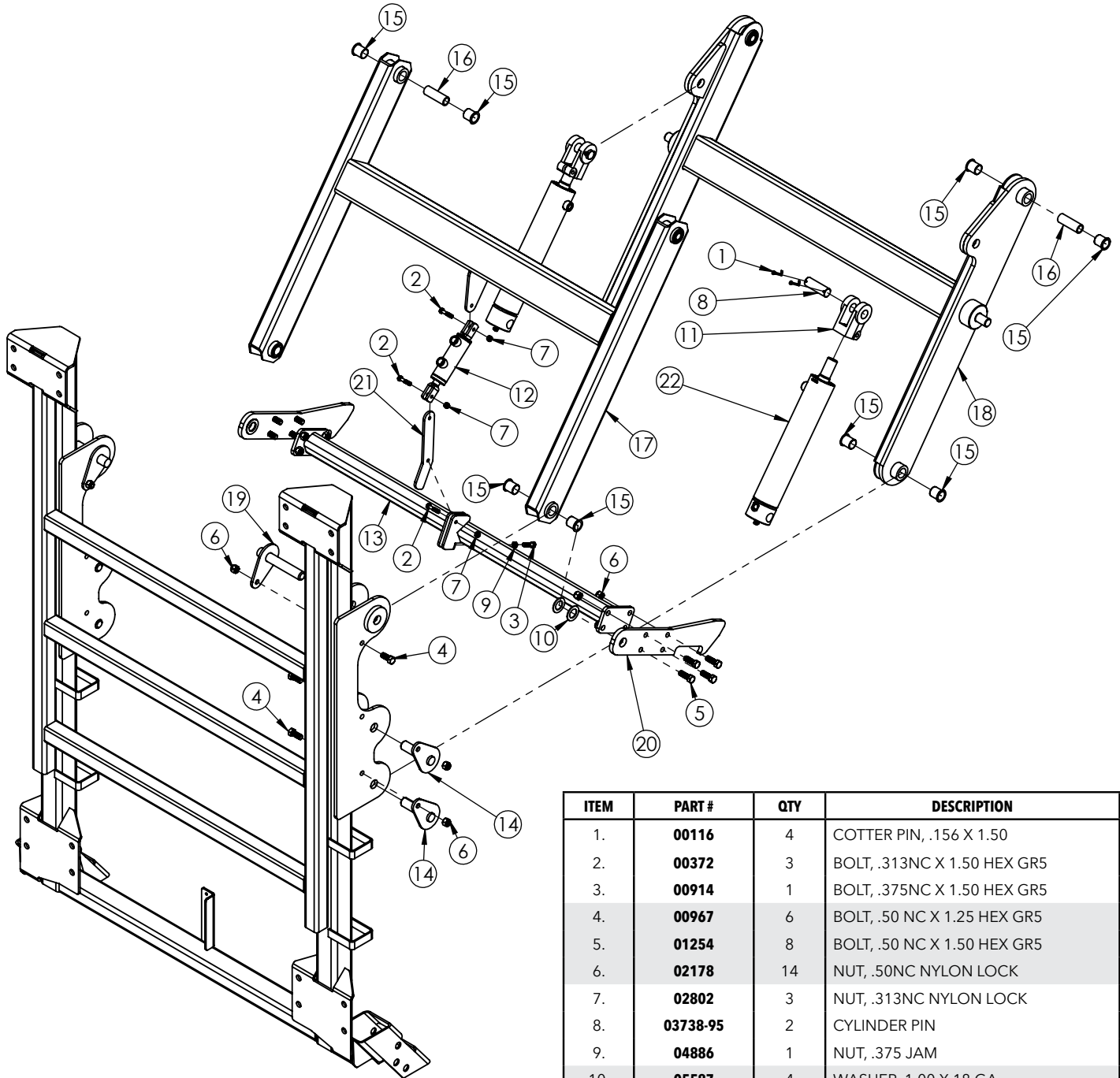


ITEM	PART #	QTY	DESCRIPTION
1.	00059	2	WASHER, FLAT .375
2.	00914	2	BOLT, .375NC X 1.50 HEX GR5
3.	01906	2	BOLT, .25NC X .75 SLOTTED TRUSS
4.	02592	2	NUT, .375NC NYLON LOCK
5.	02772	2	NUT, .25NC NYLON LOCK
6.	05032	2	BOLT, .375NC X 5.50 HEX GR5
7.	09938	2	CLAMP, 1" F/FLANGE FTG
8.	09939	12	CLAMP, 2" F/FLANGE FTG
9.	09940	6	CLAMP, 2" F/FLANGE FTG FULL PORT
10.	M100G	2	GASKET, 1"
11.	112G	12	GASKET, 1.50" X .25"
12.	12780	1	FLOW METER, 0-60 GPM FOR RAVEN
13.	12800	1	GAUGE 4" LIQUID FILLED 160 PSI
14.	14702-76	1	PLUMBING PANEL
15.	14755-76	1	SMALL VALVE MOUNT
16.	14795-76	1	SIGHT GAUGE PANEL
17.	200G	6	GASKET, 2" X .25"
18.	35799	1	TANK POLY 600 GALLON W/ FITTINGS CHARCOAL
19.	634B2020	1	QUICK COUPLER, 2" CAP
20.	B12H	2	CLAMP, GEAR, SS, .75" HOSE
21.	B16H	2	CLAMP, GEAR, SS, 1" HOSE
22.	B24H	3	CLAMP, GEAR, SS, 1.25" HOSE
23.	B32H	4	CLAMP, GEAR, SS, 1.50" HOSE
24.	B44H	8	CLAMP, GEAR, SS, F/2" HOSE
25.	B6H	1	CLAMP, GEAR, SS, .375" HOSE
26.	BEL1010	1	FTG, ELB, 1"MPT X 1"HB, GFP
27.	BEL1034	2	FTG, ELB, 1"MPT X .75"HB, GFP
28.	EL1438	1	FTG, ELB, .25"MPT X .375" HOSE BARB
29.	FA200 125HB	3	FTG, STR, 2.00" FLG X 1.25" HOSE BARB
30.	FA200 150HB	1	FTG, STR, 2" FLG X 1.50" HOSE BARB
31.	FA220 200HB	3	FTG, ELB, 2" FP FLG X 2" HOSE BARB
32.	FC1400	1	FTG, COUPLING .25" FPT POLY
33.	FEL100 100HB	1	FTG, ELB, 1" FLG X 1" HOSE BARB
34.	FEL200	1	FTG, ELB, 2" FLG X 2" FLANGE
35.	FEL200 150HB	2	FTG, ELB, 2" FLG X 1.50" HOSE BARB
36.	FEL200 200HB	1	FTG, ELB, 2" FLG X 2" HOSE BARB
37.	FEL220 150HB	1	FTG, ELB, 2" FP FLG X 1.50" HOSE BARB
-	FEL200 150HB	1	FTG, ELB, 2" FLG X 1.50" HOSE BARB
38.	FEL220 200HB	1	FTG, ELB, 2" FP FLG X 2" HOSE BARB
39.	FF200	1	FTG, PLUG, 2" FLG
40.	FF220	1	FTG, PLUG, 2" FP FLG
41.	FLST150 50	1	FILTER
42.	FRB200 100	1	FTG, RD GFP 2" FP FLG X 2" STD FLG
43.	FT200	1	FTG, TEE, 2" FLANGE (3X)
44.	FV200BLCF	1	VALVE, BALL, 2" 3-WAY FLG, T-HANDLE
45.	FV220BLCF	1	VALVE, BALL, 2" 3-WAY FLG
46.	MV100CF	1	VALVE BALL 1"FP T-HANDLE
47.	MVSF220FP	1	QUICK REFILL VALVE 2"FP FLG X 2"MALE
48.	FMC150HYD304	1	ACE HYD CENTRIFUGAL PUMP
-	C9314HM1	1	HYPRO HYD CENTRIFUGAL PUMP
49.	T200	1	FTG TEE 2" HOSE BARB POLY

Please order replacement parts by PART NO. and DESCRIPTION.

REPLACEMENT PARTS

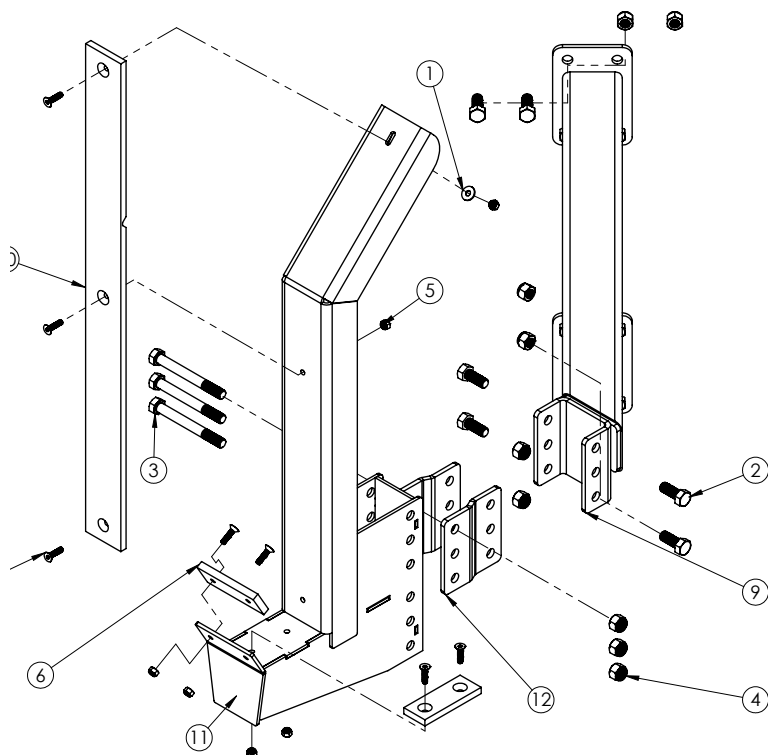
BOOM ATTACHMENT



ITEM	PART #	QTY	DESCRIPTION
1.	00116	4	COTTER PIN, .156 X 1.50
2.	00372	3	BOLT, .313NC X 1.50 HEX GR5
3.	00914	1	BOLT, .375NC X 1.50 HEX GR5
4.	00967	6	BOLT, .50 NC X 1.25 HEX GR5
5.	01254	8	BOLT, .50 NC X 1.50 HEX GR5
6.	02178	14	NUT, .50NC NYLON LOCK
7.	02802	3	NUT, .313NC NYLON LOCK
8.	03738-95	2	CYLINDER PIN
9.	04886	1	NUT, .375 JAM
10.	05587	4	WASHER, 1.00 X 18 GA
11.	09741-30	2	CYLINDER CLEVIS
12.	09985-30	1	HYD CYL 1.50" X .63 STR W/O SPRING
13.	10447-76	1	LATCH CONNECTOR
14.	11858-95	4	HEIGHT ADJUST PIN
15.	12291	16	PLASTIC BUSHING 1.00" ID X 1.25"
16.	12602-95	4	BUSHING 1.00" OD X 2.96"
17.	16772-76	1	UPPER HEIGHT ADJUST FRAME
18.	16773-76	1	LOWER HEIGHT ADJUST FRAME
19.	16774-76	2	HEIGHT ADJUST LOCKING PIN
20.	16776-76	2	LATCH F/ RM 600
21.	16776-76	1	LATCH LINK
22.	16779-30	2	CYLINDER 2.50" X 11.00" X 1.25" ROD

60' BOOM REST

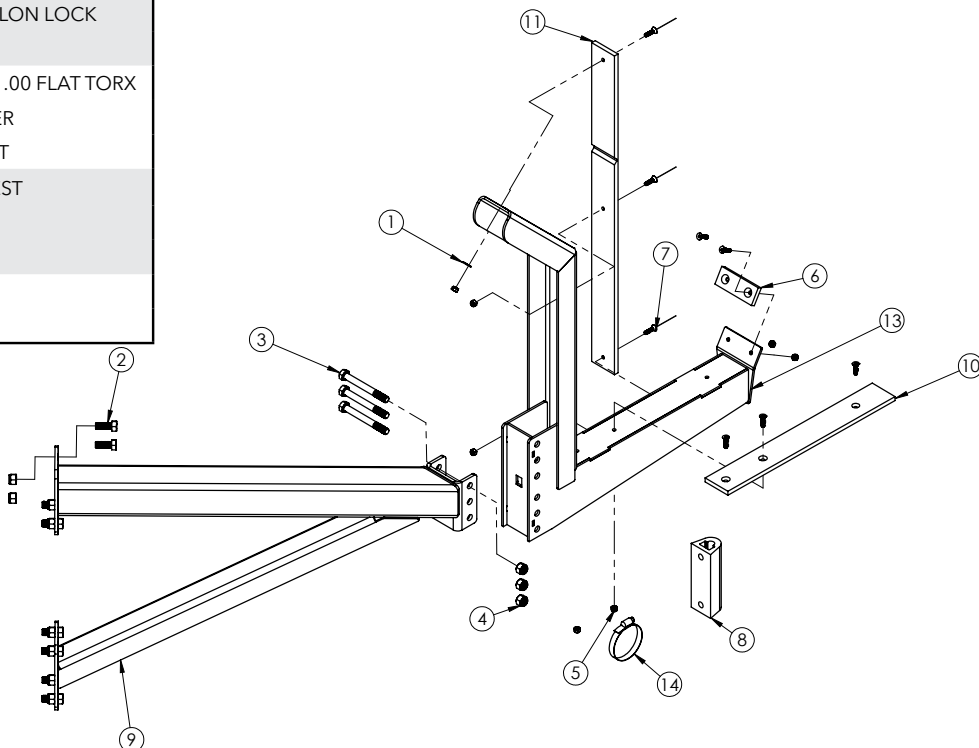
ITEM	PART #	QTY	DESCRIPTION
1.	00214	2	WASHER, FLAT .25
2.	00967	24	BOLT, .50NC X 1.25 HEX GR5
3.	01338	6	BOLT, .50NC X 4.50 HEX GR5
4.	02178	30	NUT, .50NC NYLON LOCK
5.	02772	14	NUT, .25NC NYLON LOCK
6.	02946	4	WEAR PLATE
7.	07082	14	BOLT, .25NC X 1.00 FLAT TORX
8.	12672-30	1	LEFT WING REST
9.	12673-30	1	RIGHT WING REST
10.	13251	2	30" WEAR PAD
11.	14840-30	2	60' WING REST
12.	14841-30	4	60' BOOM EXTENSION



Right Side Shown

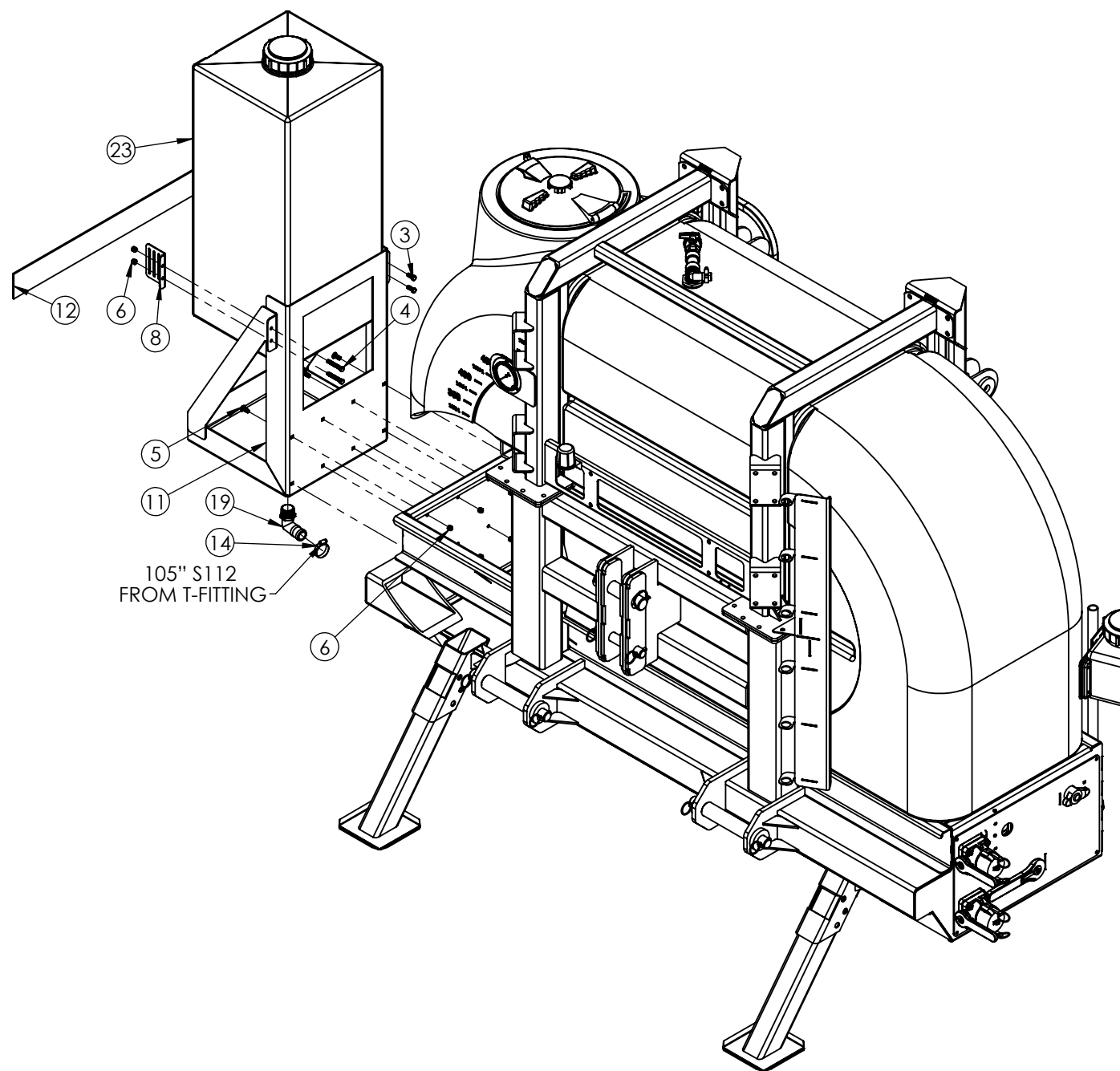
90' BOOM REST

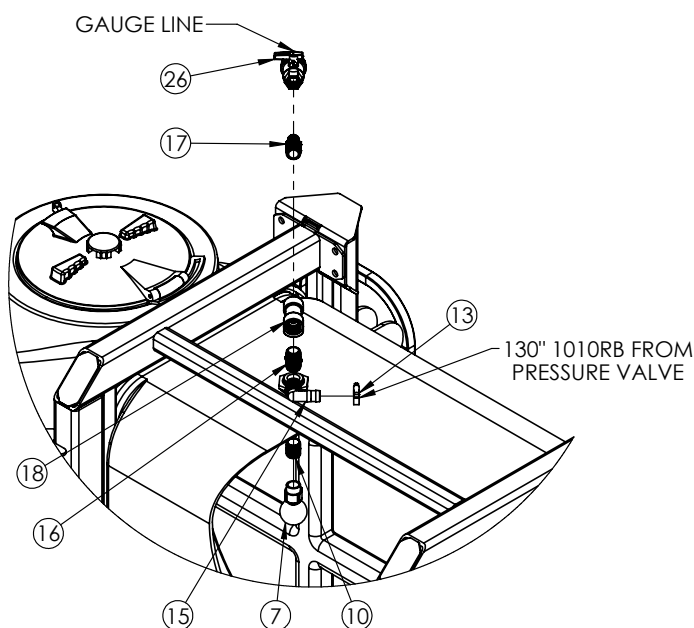
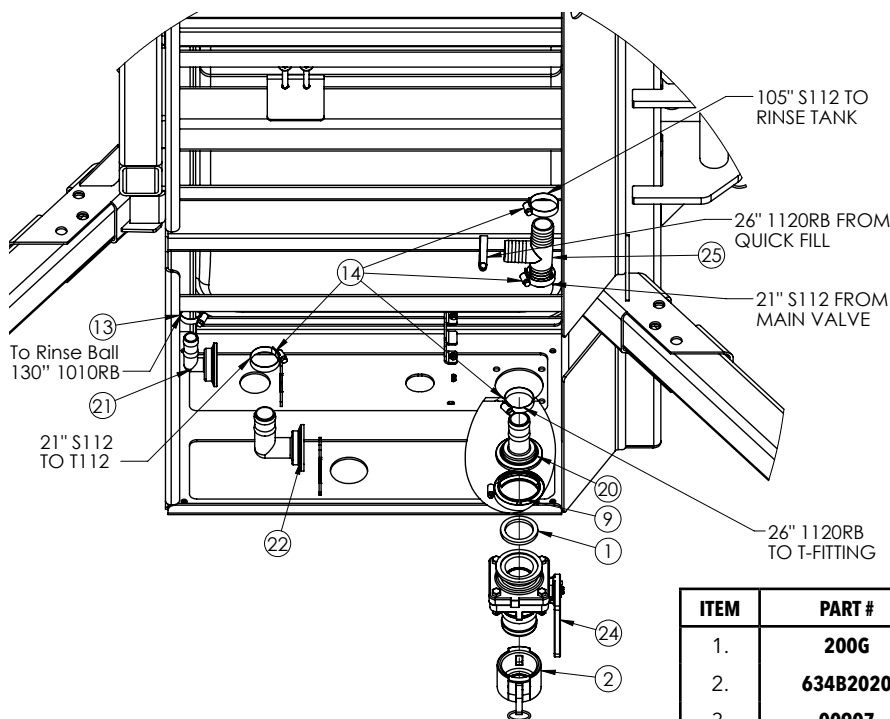
ITEM	PART #	QTY	DESCRIPTION
1.	00214	2	WASHER, FLAT .25
2.	00967	16	BOLT, .50NC X 1.25 HEX GR5
3.	01338	6	BOLT, .50NC X 4.50 HEX GR5
4.	02178	22	NUT, .50NC NYLON LOCK
5.	02772	16	NUT, .25NC NYLON LOCK
6.	02946	2	WEAR PLATE
7.	07082	16	BOLT, .25NC X 1.00 FLAT TORX
8.	10411	1	RUBBER BUMPER
9.	12672-30	1	LEFT WING REST
10.	12673-30	1	RIGHT WING REST
11.	13015	2	WEAR PAD
12.	13251	2	30" WEAR PAD
13.	14839-30	2	90' WING REST
14.	B64H	1	HOSE CLAMP



Left Side Shown

RINSE TANK BREAKDOWN



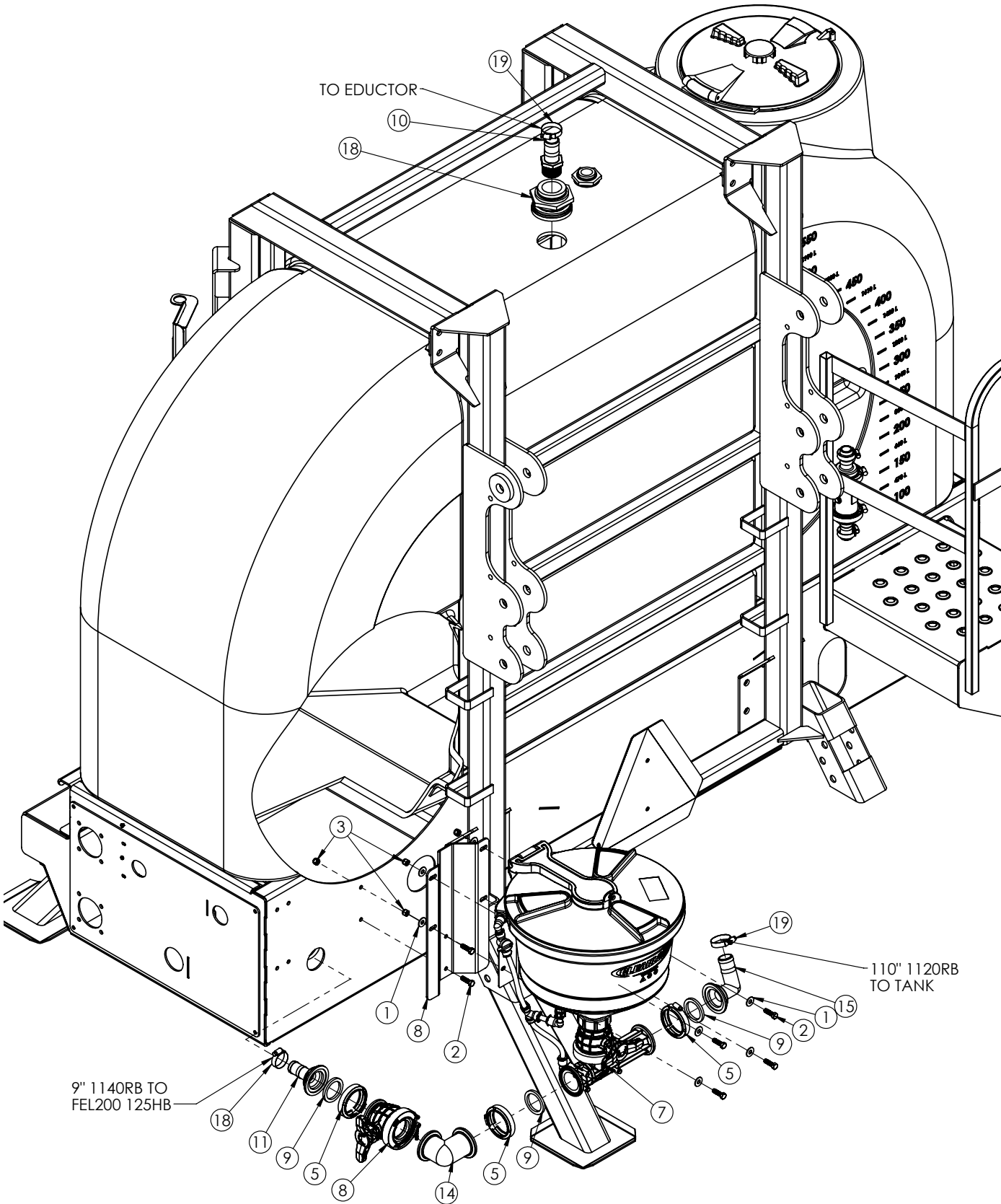


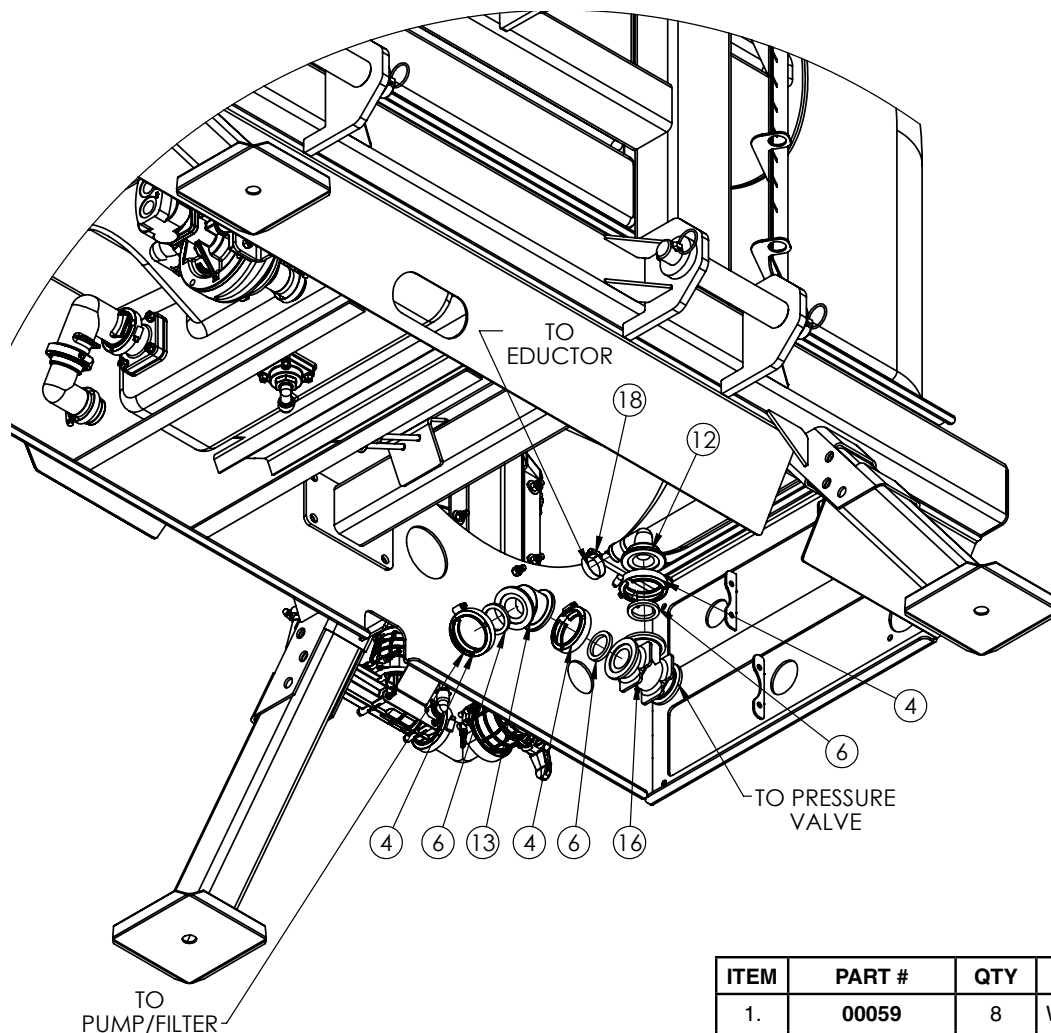
ITEM	PART #	QTY	DESCRIPTION
1.	200G	1	GASKET, 2" X .25"
2.	634B2020	1	QUICK COUPLER, 2" CAP
3.	00907	2	BOLT, .375NC X 1.00 HEX GR5
4.	00837	2	BOLT, .375NC X 4.00 HEX GR5
5.	02467	8	BOLT, .375NC X 1.00 CARRIAGE
6.	02592	12	NUT, .375NC NYLON LOCK
7.	03813	1	SPRAY BALL TANK RINSING W/ 1" MPT
8.	05784-95	2	PLATE, STRAP ANCHOR
9.	09940	1	CLAMP, 2", F/FLANGE FITTING FULL PORT
10.	11067	1	FTG NIPPLE 1" MPT
11.	14675-76	1	RINSE TANK BRACKET
12.	14678	1	STRAP, NYLON 4' X 54" BLACK
13.	B16H	2	CLAMP, GEAR, SS, 1" HOSE
14.	B32H	6	CLAMP, GEAR, SS, F/1.50' HOSE
15.	BEL1010	1	FTG, ELB, 1" MPT X 1" HOSE BARB, GFP
16.	BM1000	1	FTG, NIPPLE, 1" MPT, GFP
17.	BM1034	1	FTG, REDUCER NIP, 1" MPT X .75" MPT, GFP
18.	BTT100	1	FTG, TEE, 1" FPT, GFP
19.	EL114 112	1	FTG, ELB, 1.25" MPT X 1.50" HOSE BARB
20.	FA220 150HB	1	FTG, STR, 2" FP FLG X 1.50" HOSE BARB
21.	FEL200 100HB	1	FTG, ELB, 2.00" FLG X 1.00" HOSE BARB
22.	FEL220 150HB	1	FTG, ELB, 2" FP, FLG X 1.50" HOSE BARB
23.	P55RC	1	TANK POLY 55 GALLON CHARCOAL
-	15388	-	5" REPLACEMENT TANK LID
24.	MVSF220FP	1	QUICK REFILL VALVE 2"FP FLG X 2"MALE
25.	T112	1	FTG, TEE 1.50" HOSE BARB POLY
26.	UV075FP	1	BALL VALVE, .75" SINGLE UNION
*	S112	-	1.50" HOSE X 22" QUICK FILL TO T112
*	1010RB	-	1.50" HOSE X 130" VALVE TO RINSE
*	S112	-	1.50" HOSE X 88" T112 TO RINSE TANK
*	S112	-	1.50" HOSE X 31" T112 TO MAIN VALVE

Please order replacement parts by **PART NO.** and **DESCRIPTION.**

***ALL HOSE IS SOLD BY THE FOOT**

CHEMICAL EDUCTOR BREAKDOWN

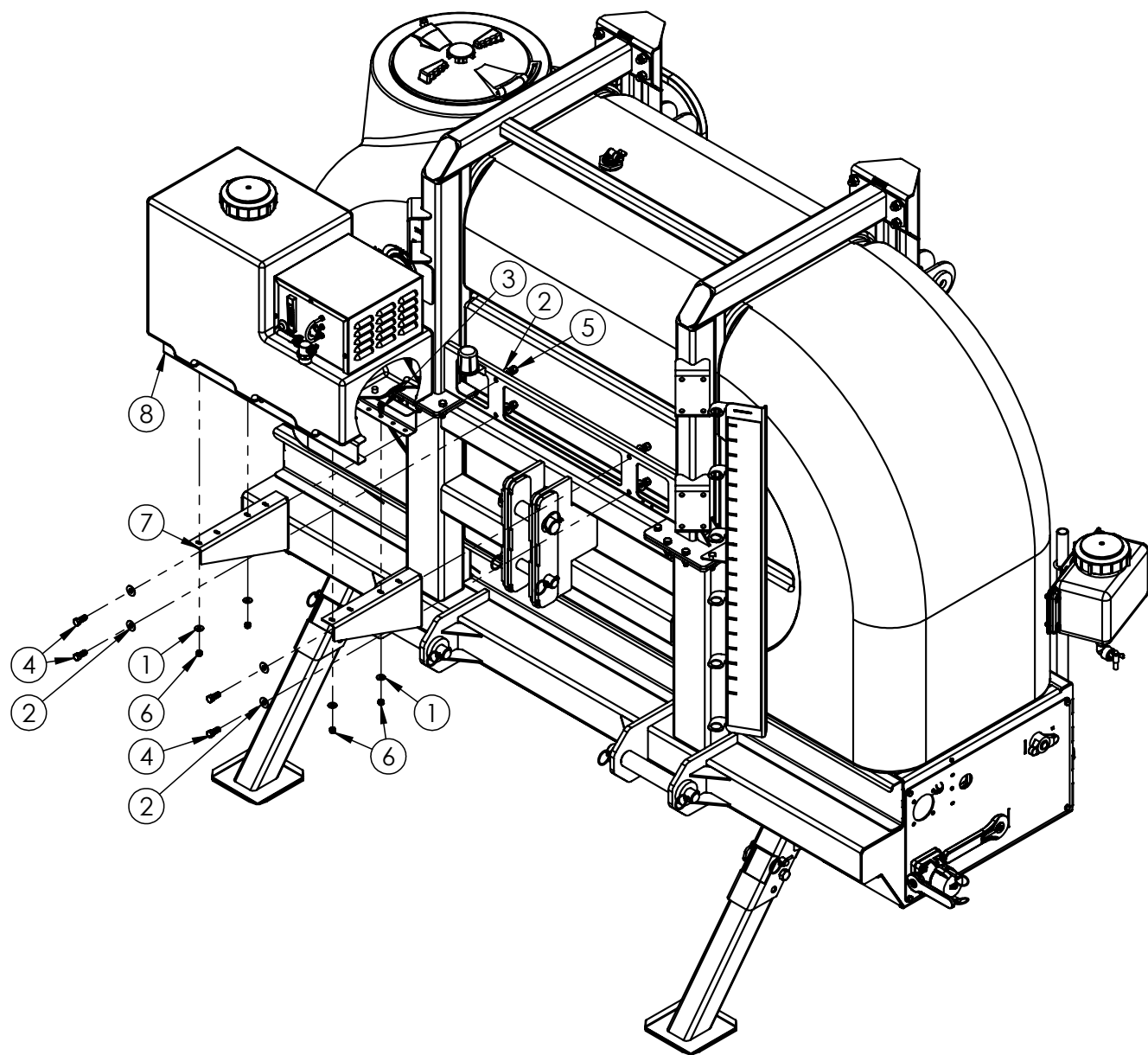




ITEM	PART #	QTY	DESCRIPTION
1.	00059	8	WASHER, FLAT .375
2.	00523	6	BOLT, .375NC X 1.25 HEX GR5
3.	02592	6	NUT, .375NC NYLON LOCK
4.	09939	2	CLAMP, 2", F/FLANGE FITTING
5.	09940	3	CLAMP, 2", F/FLANGE FITTING FULL PORT
6.	112G	2	GASKET, 1.50" X .25"
7.	14607	1	CHEMICAL EDUCTOR, 7 GALLON
8.	14676-76	1	EDUCTOR BRACKET
9.	200G	3	GASKET, 2" X .25"
10.	BA112	1	FTG, STR, 1.50" MPT X 1.50" HOSE BARB
11.	FA220 125HB	1	FTG, STR, 2" FP FLG X 1.25" HOSE BARB
12.	FEL200 125HB	1	FTG, ELB, 2" FLG X 1.25" HOSE BARB
13.	FEL200 45	1	
14.	FEL220	1	FTG, ELB, 2" FP FLG X 2" FP FLANGE
15.	FEL220 150HB	1	FTG, ELB, 2" FP FLG X 1.50" HOSE BARB
16.	FT200	1	FTG, TEE, 2" FLG (3X)
17.	P112	1	FTG, 1.50" F/ POLY TANK
18.	B24H	2	CLAMP, GEAR, SS, F/1.25" HOSE
19.	B32H	2	CLAMP, GEAR, SS, F/1.50" HOSE
*	1140RB	-	1.25" HOSE X 9", VALVE TO EDUCTOR
*	1120RB	-	1.50" HOSE X 110", EDUCTOR TO TANK
Please order replacement parts by PART NO. and DESCRIPTION.			

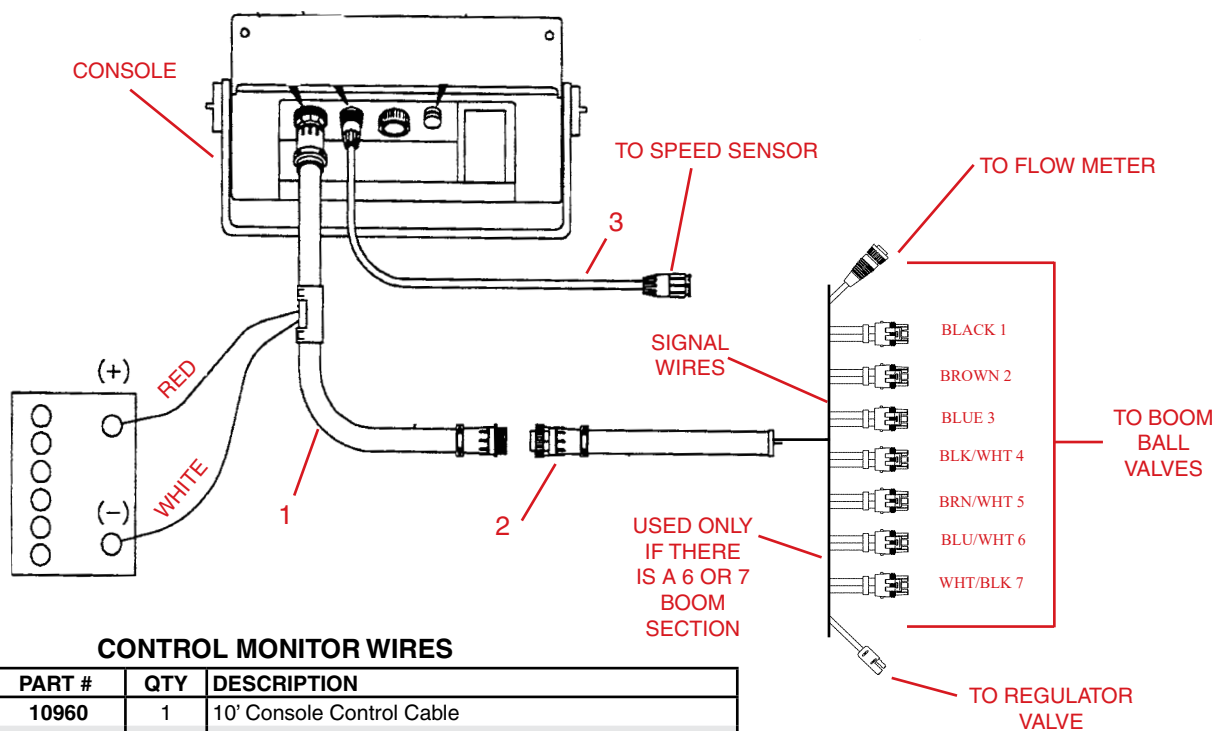
***ALL HOSE IS SOLD BY THE FOOT**

FOAM MARKER BREAKDOWN



ITEM	PART #	QTY	DESCRIPTION
1.	00059	4	WASHER, FLAT .375
2.	00085	8	WASHER, FLAT .50
3.	00907	4	BOLT, .375NC X 1.00 HEX GR5
4.	00967	4	BOLT, .375NC X 1.25
5.	02178	4	NUT, .50NC NYLON LOCK
6.	02592	4	NUT, .375NC NYLON LOCK
7.	14691-76	2	FOAM MARKER BRACKET
8.	35795	1	FOAM MARKER HV CHARCOAL
Please order replacement parts by PART NO. and DESCRIPTION.			

RAVEN CONTROL SYSTEM WIRING



CONTROL MONITOR WIRES

REF #	PART #	QTY	DESCRIPTION
1.	10960	1	10' Console Control Cable
2.	12851	1	24' Flow Control Cable
3.	10046	1	12' Speed Sensor Harness Console to Hitch
Please order replacement parts by PART NO. and DESCRIPTION.			

CONTROL MONITOR

1 (SHOWN HERE IN A BANK OF FIVE)



CONTROL MONITOR SYSTEM

REF #	PART #	QTY	DESCRIPTION
1.	16661	1	BALL VALVE
2.	10826	-	RAVEN 450 CONSOLE (5 SECTION - SHOWN)
3.	12780	1	FLOW METER
4.	10311	1	1" REGULATING BUTTERFLY VALVE
5.	09859	-	TEEJET CLAMP AND O-RING
6.	09858	-	TEEJET O-RING (NOT SHOWN)
7.	FA200 100	-	2" FLANGE TO 1" FLANGE FITTING
8.	09856	-	S.S. CLIP FOR FITTING
9.	09857	-	OUTLET STRAIGHT FITTING W/ CLIP & O-RING
-	09855	-	O-RING

SPRAYER CHECKLIST

Downtime caused by field breakdowns is costly and time consuming. Many breakdowns can be eliminated by periodic equipment maintenance. By spending time reviewing this checklist before seasonal spraying application time and following proper after season care, you can save time and money later.

Check Before Going To The Field :



WARNING: To Prevent Serious Injury Or Death

- Keep hands, feet, and loose clothing away from rotating parts.
- Wear protective clothing recommended by your chemical and fertilizer manufacturer when working with chemicals.

1. NOZZLES

Check tip for excessive wear by checking for grooves in or near tip opening. Check nozzle spacing by starting at center and working outwards. Check boom for proper height.

2. HOSES

Check all hoses for worn or soft spots. Be sure all hose clamps are tightened and hoses are not kinked or pinched. Check for leakage in any lines.

3. TANK

Remove and clean agitator orifices. Check orifices for excessive wear by checking for grooves in or near orifice opening. Inspect fitting and grommets to insure they are in good condition.

4. CONTROLS

Check for leakage, plugging, or wear on all valves, fittings, etc. Clean off any build up of foreign material.

5. PUMP

Check to be sure pump turns freely.

6. FRAME

Be sure all bolts are tightened.

7. REPLACEMENT PARTS

Replace all worn or damaged parts.

NOTE: DEMCO does not and will not make any recommendations concerning application of various chemicals or solutions. These recommendations relate to either amount or procedure of materials applied. If you have any questions regarding application of certain chemicals or solutions, contact your chemical supplier and follow chemical manufacturer recommendations.

AFTER SEASON CARE

NOTE: It is important to wear proper safety equipment when cleaning the REAR MOUNT. See your chemical or fertilizer package for this information.

1. After spraying chemicals, run water mixed with cleaners through tank, pump and all hose hookups. If wettable powder dries out in the system, it is very difficult to put back into suspension and can cause malfunction, damage or injury.
2. When cleaned, tank should have all openings closed or covered to keep dirt from entering.
3. Pump should be flushed with soluble oil and pump ports plugged to keep out moisture and air.
4. Disassemble tips and rinse with water or cleaning solution. (Appropriate for chemical sprayed).
5. Clean tip opening with a wooden toothpick. Never use wire or hard object that could distort opening.
6. Dispose of all unused chemicals or solutions in a proper and ecologically sound manner.
6. Water rinse and dry tips before storing.



4010 320th St., Boyden, IA. 51234

Phone: (712) 725-2311

Fax: (712) 725-2380

Toll Free: 1-800-54DEMCO (1-800-543-3626)

**Demco warranty policies, operator manuals, and product registration
can be found online:**

www.demco-products.com

