

# **Demco** PRO SERIES

## Lawn & Garden Sprayers



*40, 60, & 80 gallon sprayers available as trailer, rear mount or skid*



*150 & 200 gallon ATV sprayers*



*110 & 150 gallon skid sprayers*



*14 & 25 gallon ATV Sprayers*



*Doing our Best to Provide You the Best*

# 14 & 25 Gallon Sprayers



**9464047  
DB30TDF  
EX14KT**

## FEATURES

- 5" fillwell, 1" sump, ½" outlet with agitation.
- 15" spray gun with adjustable nozzle for 14 gal sprayer.
- 18" handgun with adjustable nozzle for 25 gal sprayer.
- 14 gal has 1.8 GPM electric pump. 3 GPM pump optional.
- 25 gal has 5 GPM electric pump.
- Pressure gauge and regulating valve standard.
- 80" or 144" Booms available for 14 gallon sprayer.
- 12', 18', 21' or 30' Booms available for 25 gallon sprayer.



**SM14  
HYMB  
80B10**

**EX14KT**

# 40, 60, & 80 Gallon Sprayers



**9464064**  
Skid mount  
with 5 GPM  
electric pump

## FEATURES

- 40, 60 & 80 gal tank sizes available.
- Trailer, skid & rear mount models.
- 40 gal boom options of 80", 12' or 18'.
- 40, 60, & 80 gal tank sizes. 40 gal comes with 5 GPM electric pump.
- 60 & 80 gal boom options of 80", 12', 18', 21' or 30'.
- 40, 60, & 80 gal tank sizes. 60 & 80 gal pump options of electric 5 GPM, 3.5 HP B&S engine with C4101 GE pump, 4 HP Honda with "Silver Cast" pump, 3 HP Honda with Ace centrifugal pump or PTO 6 Roller pump.
- Sloped bottom sump for total drainage.
- Molded-in baffling for agitation.
- 5" fillwell and 1 1/4" outlet.
- Gallon and liter markings on the tank.
- Rugged 12 gauge formed steel skid frame.
- 15 x 6 flotation tires for 40 gallon trailer.
- 18 x 9.50 flotation tires for 60 & 80 gallon trailer models.
- Handgun with 15' hose
- 2 nozzle boomless kits available.



**9464090**  
Rear mount  
with PTO pump



**9464104  
DB12**  
Trailer with Ace  
centrifugal pump  
and 3 HP Honda  
engine

# 110 & 150 Gallon Sprayers

## FEATURES

- 110 or 150 gallon polyethylene tank features sump, molded sight gauge and large fillwell.
- Heavy duty formed steel skid frame (W-30" x L-70").
- 5 GPM electric pump, 4 roller pump or gas engine with centrifugal pump- 3.5 HP B & S or 4 or 5.5 HP Honda.
- 18" handgun with 15' hose.
- 12', 18' or 21' booms.



*Optional  
Lawn & Turf  
Handgun*



# 150 & 200 Gallon ATV Sprayer



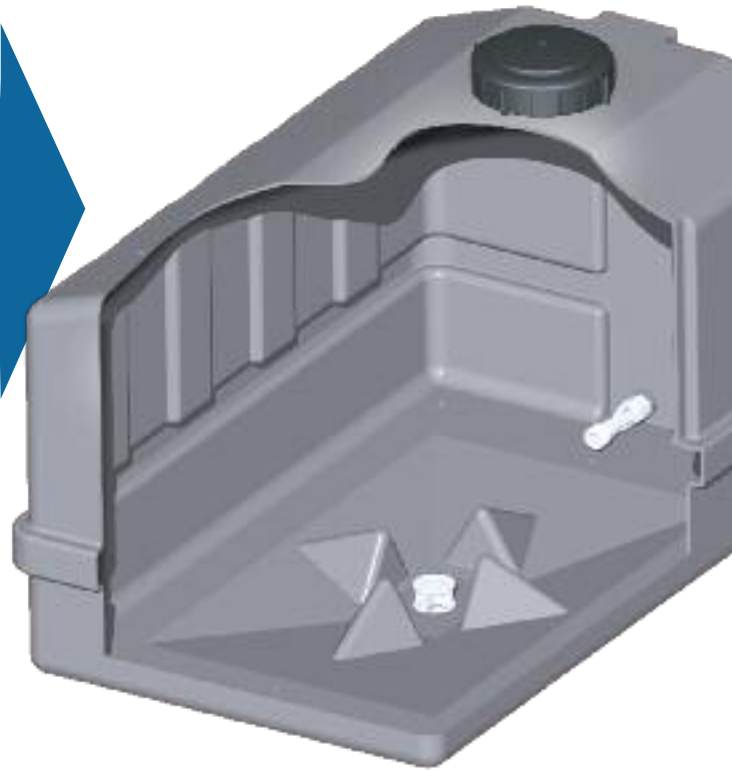
## FEATURES

- 2" ball coupler hitch.
- Single or tandem axles.
- Walking tandems feature "lock out" for rigid axle spraying.
- 21', 30' and 40' booms.
- PTO 6 roller pump, 6.5 HP Power Pro™ or 5.5 HP Honda gas engines with centrifugal pump.
- 150 or 200 gallon polyethylene tank with jet agitation, sump molded sight gauge and fillwell.
- Trailer frame features height adjustment of up to 18" ground clearance and adjustable wheel spacing of 44" to 90" maximum centers.
- Single axle has 24x12 turf tires.
- Walking tandems have 22x11x8 pneumatic tires.
- 2 1/2 gallon clean water tank.



# *Better agitation, better drainage*

*Just take a look inside*



*The DEMCO Pro Series tank  
for 40, 60, & 80 gallons is more  
than just an "Off the Self" tank that  
holds spray solution*



**Demco**

4010 320th Street • Boyden, Iowa 51234

(712)725-2311 • 1-800-543-3626 • FAX: 1-800-845-6420

View all Demco products on the web at: [www.demco-products.com](http://www.demco-products.com)

*DOING OUR BEST TO PROVIDE YOU THE BEST*