



*Doing Our Best to Provide You the Best*

AS20023, Rev 6  
04/19

---

## **ATV SPRAYER**

### **150 & 200 Gallon**

---



**OPERATOR MANUAL**

INTRODUCTION

Thank you for purchasing a Demco sprayer. We feel you have made a wise choice and hope you are completely satisfied with your new sprayer. If you have any questions regarding the applications of certain solutions or chemicals, contact your chemical supplier and follow chemical manufacturer recommendations as well as all licensing and use restrictions or regulations.

WARRANTY POLICY, OPERATOR MANUALS, PARTS MANUALS & REGISTRATION

Go online to [www.demco-products.com](http://www.demco-products.com) to review Demco warranty policies, operator manuals and register your Demco product.



**WARNING: TO AVOID PERSONAL INJURY OR PROPERTY DAMAGE, OBSERVE FOLLOWING INSTRUCTIONS:**

**Chemicals are dangerous. Know exactly what you’re going to do and what is going to happen before attempting to work with these products. Improper selection or use can injure people, animals, plants and soil.**

**Always wear protective clothing such as coveralls, goggles and gloves when working with chemicals or sprayer.**

**Be sure to dispose of all unused chemicals or solutions in a proper and ecologically sound manner.**

GENERAL INFORMATION

1. Unless otherwise specified, high-strength (grade5) (3 radial-line head markings) hex head bolts are used throughout assembly of this sprayer.

2. Whenever terms “LEFT” and “RIGHT” are used in this manual it means from a position behind sprayer and facing forward.
3. When placing a parts order, refer to this manual for proper part numbers and place order by **PART NO., DESCRIPTION, and COLOR.**

TABLE OF CONTENTS

General information.....

Safety Information .....

Safety Sign Locations.....

Bolt Torque.....

Tongue/Axle Assembly.....

Axle Insert Installation.....

Saddle Assembly and Tank Installation .....

Panel Mount/Wash Tank Assembly and Parts List .....

21’- 40’ Truss-T Boom Installation .....

Optional Hose Reel Installation and Parts List .....

Sprayer Parts Breakdown and Parts List.....

Roller Pump Plumbing Breakdown .....

Centrifugal Pump Plumbing Breakdown.....

Roller Pumps Parts Breakdown .....

Centrifugal Pump Parts Breakdown .....

AA171 Tee Valve Parts Breakdown .....

Sprayer Checklist.....

2

3-10

5

11

12

13

14

15

16

17

18-19

20-21

22-23

24

25

26

27

**TAKE NOTE! THIS SAFETY ALERT SYMBOL FOUND THROUGHOUT THIS MANUAL IS USED TO CALL YOUR ATTENTION TO INSTRUCTIONS INVOLVING YOUR PERSONAL SAFETY AND SAFETY OF OTHERS. FAILURE TO FOLLOW THESE INSTRUCTIONS CAN RESULT IN INJURY OR DEATH!**



**THIS SYMBOL MEANS  
ATTENTION  
BECOME ALERT  
YOUR SAFETY IS INVOLVED!**

**SIGNAL WORDS:**

This manual uses the following signal words--**DANGER**, **WARNING**, and **CAUTION**-- with safety messages. The appropriate signal word has been selected using the following guidelines.

**DANGER:**

Indicates an imminently hazardous situation that, if not avoided, will result in death or serious injury. This signal word is to be limited to most extreme situations typically for machine components which, for functional purposes, cannot be guarded.

**WARNING:**

Indicates a potentially hazardous situation that, if not avoided, could result in death or serious injury, and includes hazards that are exposed when guards are removed. It may also be used to alert against unsafe practices.

**CAUTION:**

Indicates a potentially hazardous situation that, if not avoided, may result in minor or moderate injury. It may also be used to alert against unsafe practices.

If you have questions not answered in this manual, require additional copies, or if your manual is damaged, please contact your dealer or DEMCO, 4010 320th Street, Boyden, IA 51234  
ph: (712) 725-2311 or Toll Free: 1-800-543-3626 Fax: (712) 725-2380 or 1-800-845-6420  
<http://www.demco-products.com>



# SAFETY...YOU CAN LIVE WITH IT



## EQUIPMENT SAFETY GUIDELINES

Every year many accidents occur which could be avoided by a few seconds of thought and more careful approach to handling equipment. You, the operator, can avoid accidents by observing precautions in this section. To avoid personal injury, study precautions and insist those working with you, or you yourself, follow them.

In order to provide a better view, certain illustrations in this manual may show an assembly with a safety shield removed. However, sprayer should never be operated in this condition. Keep all shields in place. If shield removal becomes necessary for repairs, replace shield prior to use.

Replace any caution, warning, danger or instruction safety decal that is not readable or is missing. Location of such decals is indicated in this booklet.

Do not attempt to operate this sprayer under the influence of alcohol or drugs.

Review safety instructions with all users.

Operator should be a responsible adult. **DO NOT ALLOW PERSONS TO OPERATE OR ASSEMBLE THIS SPRAYER UNTIL THEY HAVE DEVELOPED A THOROUGH UNDERSTANDING OF SAFETY PRECAUTIONS AND HOW IT WORKS.**

To prevent injury or death, use a tractor equipped with a roll over protective system (ROPS). Do not paint over, remove, or deface any safety signs or warning decals on your sprayer. Observe all safety signs and practice instructions on them.

Never exceed limits of sprayer. If its ability to do a job, or to do so safely is in question **DON'T TRY IT.**



## LIGHTING AND MARKING

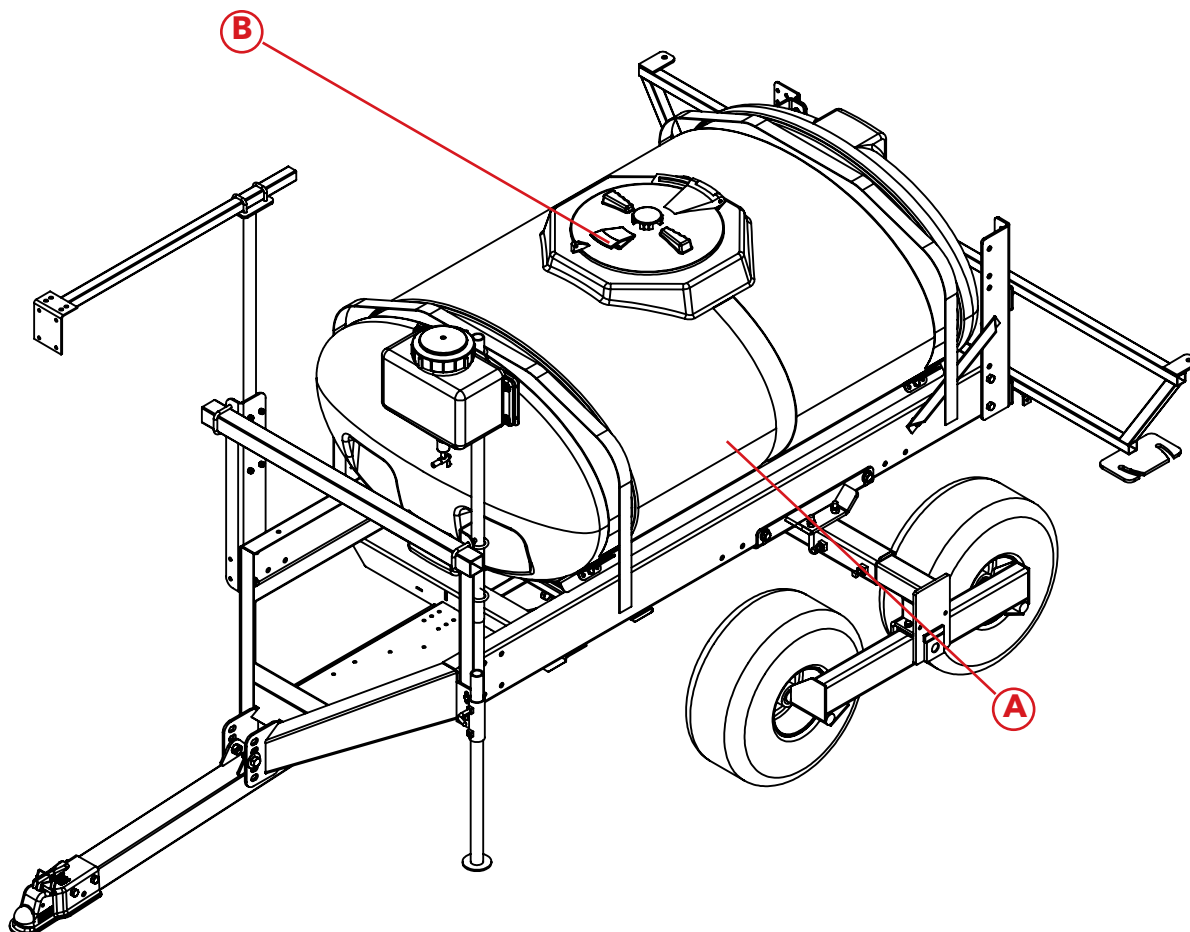
It is the responsibility of operator to know lighting and marking requirements of local highway authorities and to install and maintain equipment to provide compliance with regulations. Add extra lights when transporting at night or during periods of limited visibility.

Lighting kits are available from your dealer or manufacturer.



## SAFETY SIGN LOCATIONS

Types of safety sign and locations on equipment are shown in illustration below. Good safety requires that you familiarize yourself with various safety signs, type of warning, and area or particular function related to that area, that requires your SAFETY AWARENESS.



**A.** AA21018 Qty.2-Both sides of tank

**B.** AB21014





### SAFETY SIGN CARE

- Keep safety signs clean and legible at all times.
- Replace safety signs that are missing or have become illegible.
- Replacement parts that displayed a safety sign should also display current sign.
- Safety signs are available from your distributor, dealer parts department, or manufacturer.

#### How to install safety signs:

- Be sure installation area is clean and dry.
- Decide on exact position before you remove backing paper.
- Remove smallest portion of split backing paper.
- Align decal over specified area and carefully press small portion with exposed sticky backing in place.
- Slowly peel back remaining paper and carefully smooth remaining portion of decal into place.
- Small air pockets can be pierced with a pin and smoothed out using piece of decal backing paper.



### TIRE SAFETY

- Failure to follow proper procedures when mounting tire on rim can produce an explosion resulting in serious injury or death.
- Do not attempt to mount tire unless you have proper equipment and experience.
- Inflating or servicing tires can be dangerous. Whenever possible, trained personnel should be called to service or mount tires.
- Always order and install tires and wheels with appropriate type and load capacity to meet or exceed anticipated weight to be placed on sprayer.



### REMEMBER

Your best assurance against accidents is a careful and responsible operator. If there is any portion of this manual or function you do not understand, contact your local authorized dealer or manufacturer.



### BEFORE OPERATION:

- Carefully study and understand this manual.
- Do not wear loose-fitting clothing which may catch in moving parts.
- Always wear protective clothing and substantial shoes.
- It is recommended that suitable hearing and eye protection be worn.
- Operator may come in contact with certain materials which may require specific safety equipment relative to handling of such materials. (Examples: extremely dusty, molds, fungus, bulk fertilizers, etc.)

- Keep wheel and lug nuts tightened to specified torque.
- Assure that agricultural implement tires are inflated evenly.
- Give sprayer a visual inspection for any loose bolts, worn parts, or cracked welds, and make necessary repairs. Follow maintenance safety instructions included in this manual.
- Be sure there are no tools lying on or in equipment
- Do not use the sprayer until you are sure that area is clear, especially around children and animals.
- Don't hurry learning process or take sprayer for granted. Ease into it and become familiar with your new equipment.
- Practice operation of your sprayer and its attachments. Completely familiarize yourself and other operators with its operation before using.
- Use a tractor equipped with Roll Over Protection System (ROPS) and fasten your seat belt prior to starting engine.
- Manufacturer does not recommend usage of tractor with ROPS removed.
- Move tractor wheels to widest recommended settings to increase stability.
- Do not allow anyone to stand between tongue or hitch and towing unit when backing up to equipment.

**DURING OPERATION**

- Beware of bystanders, **PARTICULARLY CHILDREN!** Always look around to make sure it is safe to start engine of towing unit or move sprayer. This is particularly important with higher noise levels and quiet cabs, as you may not hear people shouting.
- **NO PASSENGERS ALLOWED-** Do not carry passengers anywhere on or in the tractor or sprayer.
- Keep hands and clothing clear of moving parts.
- Do not clean, lubricate, or adjust your sprayer while it is moving.
- When halting operation, even periodically, set tractor or towing unit brakes, disengage PTO, shut off engine, and **remove ignition key**.
- Be especially observant of operating area and terrain- watch for holes, rocks, or other hidden hazards. Always inspect area prior to operation.
  - DO NOT operate near edge of drop-offs or banks.
  - DO NOT operate on steep slopes as overturn may result.
  - Operate up and down (not across) intermediate slopes. Avoid sudden starts and stops.

- Pick the most level possible route when transporting across fields. Avoid edges of ditches, gullies, and steep hillsides.
- Be extra careful when working on inclines.
- Periodically clear equipment of brush, twigs, or other materials to prevent buildup of dry combustible materials.
- Maneuver tractor or towing unit at safe speeds.
- Avoid overhead wires or other obstacles. Contact with overhead lines could cause serious injury or death.
- Avoid loose gravel, rocks, and holes; they can be dangerous for equipment operation or movement.
- Allow for sprayer length when making turns.
- Do not walk or work under raised components or attachments unless securely positioned and blocked.
- Keep all bystanders, pets, and livestock clear of work area.
- Operate towing unit from operators seat only.
- Never stand alongside of unit with engine running or attempt to start engine and/or operate machine while standing alongside of unit.
- Never leave running equipment attachments unattended.
- As a precaution, always recheck hardware on equipment following every 100 hours of operation. Correct all problems. Follow maintenance safety procedures.



### FOLLOWING OPERATION

- Following operation, or when unhitching, stop tractor or towing unit, set brakes, disengage PTO and all power drives, shut off engine and **remove ignition key**.
- Store sprayer in an area away from human activity.
- Do not park sprayer where it will be exposed to livestock for long periods of time. Damage and livestock injury could result.
- Do not permit children to play on or around the stored sprayer.
- Make sure all parked machines are on a hard, level surface and engage all safety devices.
- Wheel chocks may be needed to prevent unit from rolling.





## HIGHWAY AND TRANSPORT OPERATIONS

- **SAFETY CHAINS:** If equipment is going to be transported on a public highway, always follow state and local regulations regarding safety chains and auxiliary lighting. Be sure to check with local law enforcement agencies for your own particular regulations. If required safety chains should be obtained and installed. Only safety chains (not elastic or nylon/plastic tow straps) should be used to retain connection between towing and towed machines in event of separation of primary attaching system. Use a high strength, appropriately sized hitch pin with a mechanical retainer and attach safety chains. Criss cross chains under tongue and secure to draw bar cage, mounting loops, or bumper frame.
- Adopt safe driving practices:
  - Keep brake pedals latched together at all times. **NEVER USE INDEPENDENT BRAKING WITH SPRAYER IN TOW. LOSS OF CONTROL OR UPSET MAY RESULT.**
  - Always drive at a safe speed relative to local conditions and ensure that your speed is low enough for an emergency stop. Keep speed to a minimum.
  - Reduce speed prior to turns to avoid risk of overturning.
  - Always keep tractor or towing unit in gear to provide engine braking when going downhill. Do not coast.
  - Do not drink and drive!
- Comply with state and local laws governing highway safety and movement of farm machinery on public roads.
- Use approved accessory lighting flags and necessary warning devices to protect operators of other vehicles on highway during transport. Various safety lights and devices are available from your dealer.
- Use of flashing amber lights is acceptable in most localities. However, some localities prohibit their use. Local laws should be checked for all highway lighting and marking requirements.
- When driving tractor and sprayer under 20 mph (40 kph) day or night, use flashing amber warning lights and a slow moving vehicle (SMV) identification emblem.
- Plan your route to avoid heavy traffic.
- Be a safe and courteous driver. Always yield to oncoming traffic in all situations, including narrow bridges, intersections, etc.
- Be observant of bridge load ratings. Do not cross bridges rated lower than gross weight of unit you are operating.
- Watch for obstructions overhead and side to side while transporting.
- Always operate equipment in a position to provide maximum visibility at all times. Make allowances for increased length and weight of sprayer when making turns, or stopping.



### PERFORMING MAINTENANCE

- Good maintenance is your responsibility. Poor maintenance is an invitation to trouble.
- Make sure there is plenty of ventilation. Never operate engine of towing vehicle in a closed building. Exhaust fumes may cause asphyxiation.
- Before working on this machine, stop towing vehicle, set brakes, disengage PTO and all power drives, shut off engine and **remove ignition key**.
- Be certain all moving parts and attachments have come to a complete stop before attempting to perform maintenance.
- Always use a safety support and block wheels. Never use a jack to support machine.
- Always use proper tools or equipment for job at hand.
- Use extreme caution when making adjustments.
- Follow torque chart in this manual when tightening bolts and nuts.
- Never use your hands to locate a hydraulic leak on attachments. Use a small piece of cardboard or wood. Hydraulic fluid escaping under pressure can penetrate skin.
- Openings in skin and minor cuts are susceptible to infection from hydraulic fluid.  
**Without immediate medical treatment, serious infection and reactions can occur.**
- When disconnecting hydraulic lines, shut off hydraulic supply and relieve all hydraulic pressure.
- Replace **all shields** and **guards** after servicing and before moving.
- After servicing, be sure all tools, parts and service equipment are removed.
- Do not allow grease or oil to build up on any steps or platform.
- When replacing bolts refer to owners manual.
- Refer to bolt torque chart for head identification marking.
- Where replacement parts are necessary for periodic maintenance and servicing, genuine factory replacement parts must be used to restore your equipment to original specifications. Manufacturer will not claim responsibility for use of unapproved parts or accessories and other damages as a result of their use.
- If equipment has been altered in any way from original design, manufacturer does not accept any liability for injury or warranty.
- A fire extinguisher and first aid kit should be kept readily accessible while performing maintenance on this equipment



## TORQUE SPECIFICATION

Torque figures indicated are valid for non-greased or non-oiled threads and heads unless otherwise specified. Therefore, do not grease or oil bolts or capscrews unless otherwise specified in this manual. When using locking elements, increase torque values by 5%.

\* GRADE or CLASS value for bolts and capscrews are identified by their head markings.

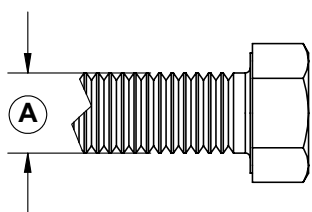
## BOLT TORQUE DATA FOR STANDARD NUTS, BOLTS, AND CAPSCREWS.

Tighten all bolts to torques specified in chart unless otherwise noted. Check tightness of bolts periodically, using bolt chart as guide. Replace hardware with same grade bolt.

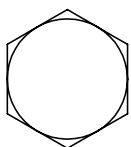
NOTE: Unless otherwise specified, high-strength Grade 5 hex bolts are used throughout assembly of equipment.

Bolt Torque for Standard bolts *						
"A"	GRADE 2		GRADE 5		GRADE 8	
	lb-ft	(N.m)	lb-ft	(N.m)	lb-ft	(N.m)
1/4"	6	(8)	9	(12)	12	(16)
5/16"	10	(13)	18	(25)	25	(35)
3/8"	20	(27)	30	(40)	45	(60)
7/16"	30	(40)	50	(70)	80	(110)
1/2"	45	(60)	75	(100)	115	(155)
9/16"	70	(95)	115	(155)	165	(220)
5/8"	95	(130)	150	(200)	225	(300)
3/4"	165	(225)	290	(390)	400	(540)
7/8"	170	(230)	420	(570)	650	(880)
1"	225	(300)	630	(850)	970	(1310)

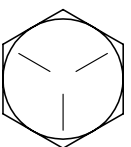
Bolt Torque for Metric bolts *						
"A"	CLASS 8.8		CLASS 9.8		CLASS 10.9	
	lb-ft	(N.m)	lb-ft	(N.m)	lb-ft	(N.m)
6	9	(13)	10	(14)	13	(17)
7	15	(21)	18	(24)	21	(29)
8	23	(31)	25	(34)	31	(42)
10	45	(61)	50	(68)	61	(83)
12	78	(106)	88	(118)	106	(144)
14	125	(169)	140	(189)	170	(230)
16	194	(263)	216	(293)	263	(357)
18	268	(363)	--	--	364	(493)
20	378	(513)	--	--	515	(689)
22	516	(699)	--	--	702	(952)
24	654	(886)	--	--	890	(1206)



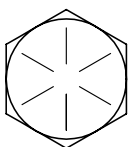
GRADE-2



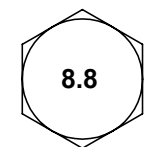
GRADE-5



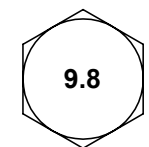
GRADE-8



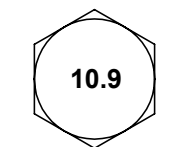
CLASS 8.8



CLASS 9.8

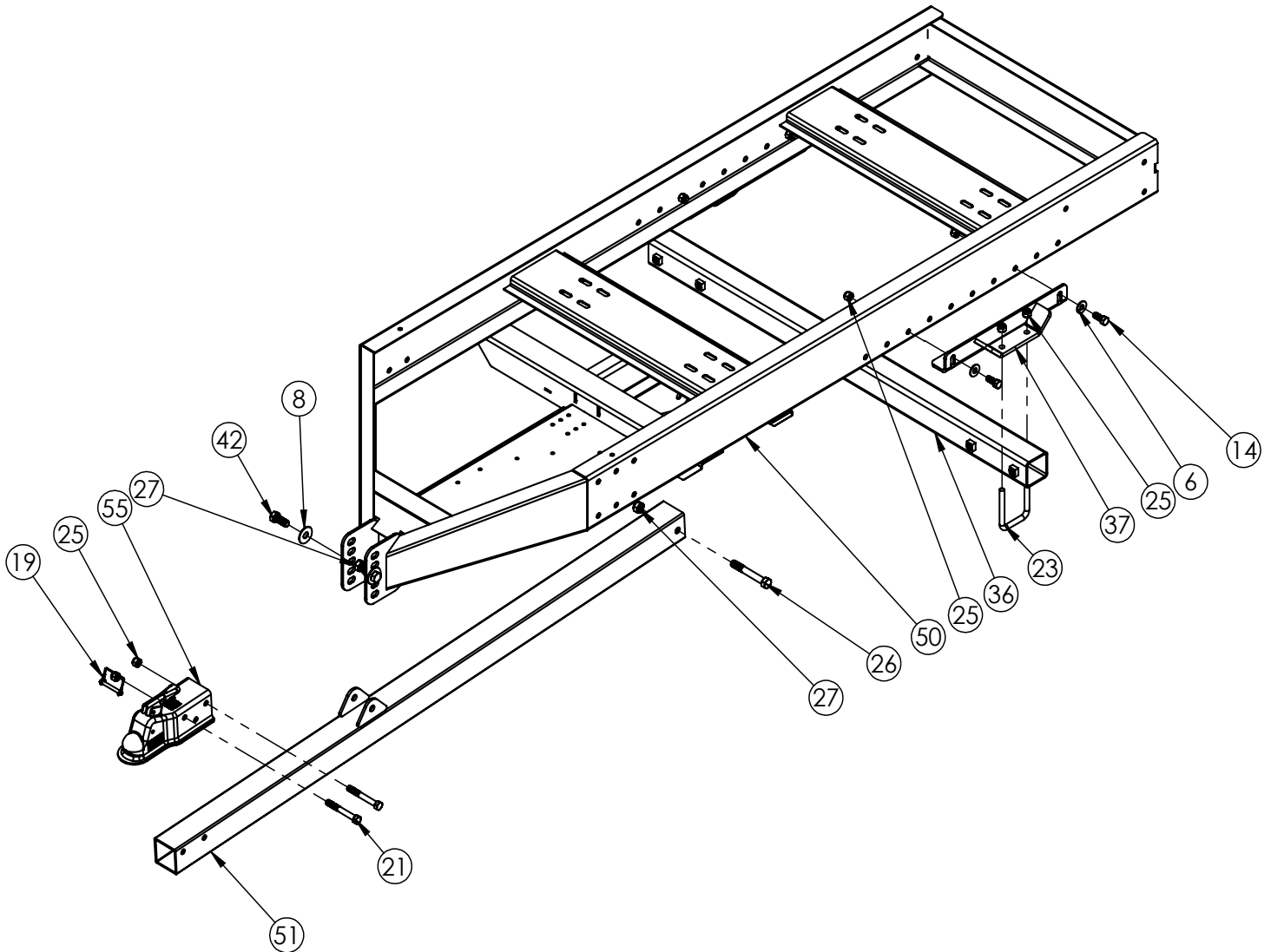


CLASS 10.9



# ASSEMBLY INSTRUCTIONS

## TONGUE/AXLE ASSEMBLY

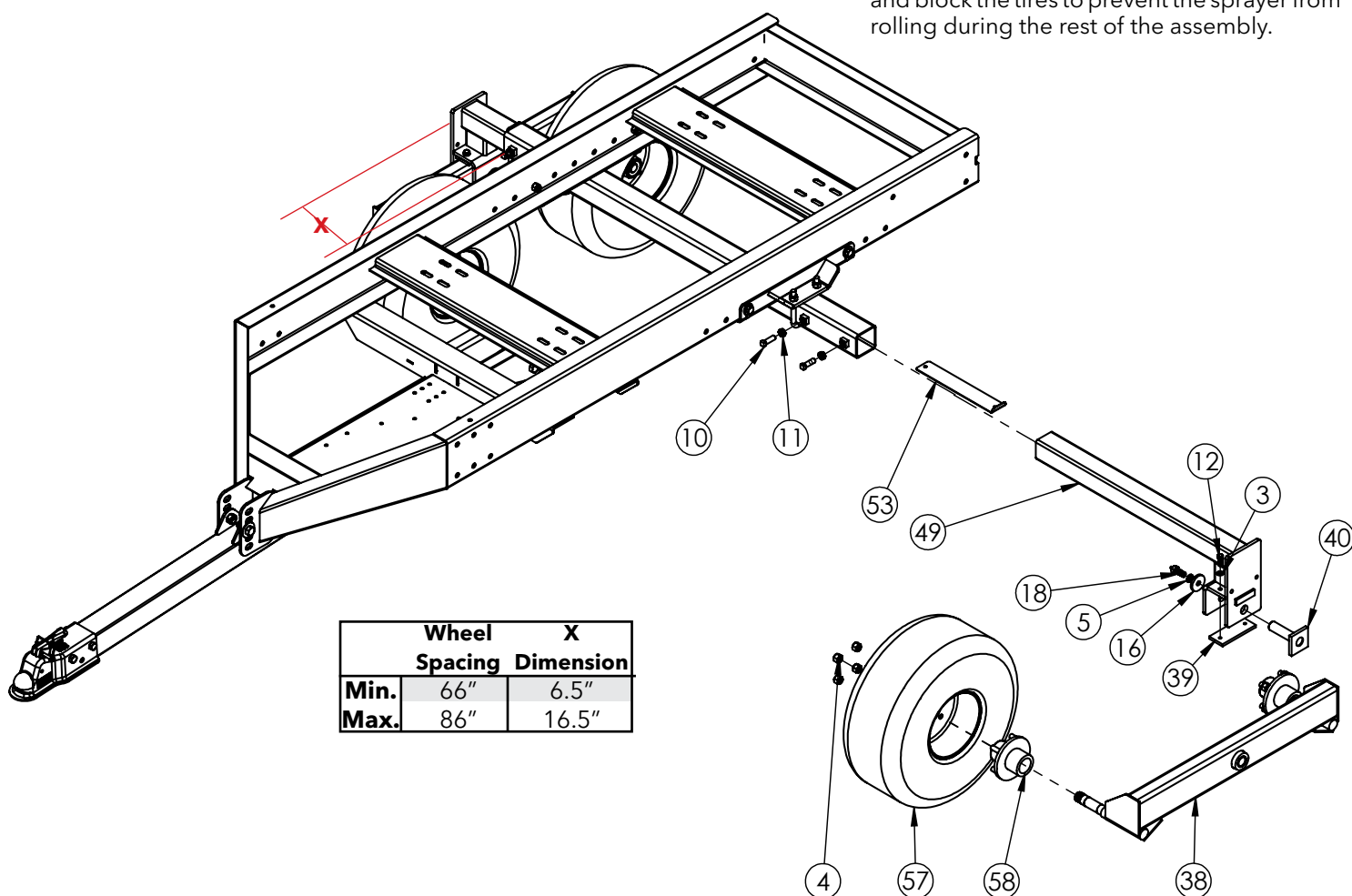


### ASSEMBLY INSTRUCTIONS

1. Place the frame on something sturdy, approximately 17"-18" off the floor, near the rear corners and the angled tongue area of the frame. With four 1/2" x 1-1/4" hex head bolts (#14), four 1/2" flatwashers (#6), and four 1/2" nylon insert locknuts (#25), bolt the left and right axle mounts (#37) to the main frame on the bottom side. **NOTE:** The axle mounts may be moved forward or backwards to obtain the proper tongue weight.
2. Continue by bolting the axle tube (#36) to the axle mounts using two 1/2" x 3" square u-bolts (#23) and four 1/2" nylon insert locknuts (#25). **NOTE:** Be sure the weld-on nuts are facing the front of the sprayer. Also center the axle tube under the sprayer frame.
3. Next bolt the rear of the tongue tube (#51) to the frame using one 5/8" x 4-1/2" hex head bolt (#26) and one 5/8" nylon insert locknut (#27). Bolt the front of the tongue to the frame using two 5/8" x 1-1/2" hex head bolts (#42), two 5/8" flatwashers (#8), and locknuts (#27). **NOTE:** The tongue may be adjusted up or down so the trailer is level when attached to the towing vehicle. Attach the ball coupler (#55) to the tongue tube using two 1/2" x 4" hex head bolts (#21) and locknuts (#25).

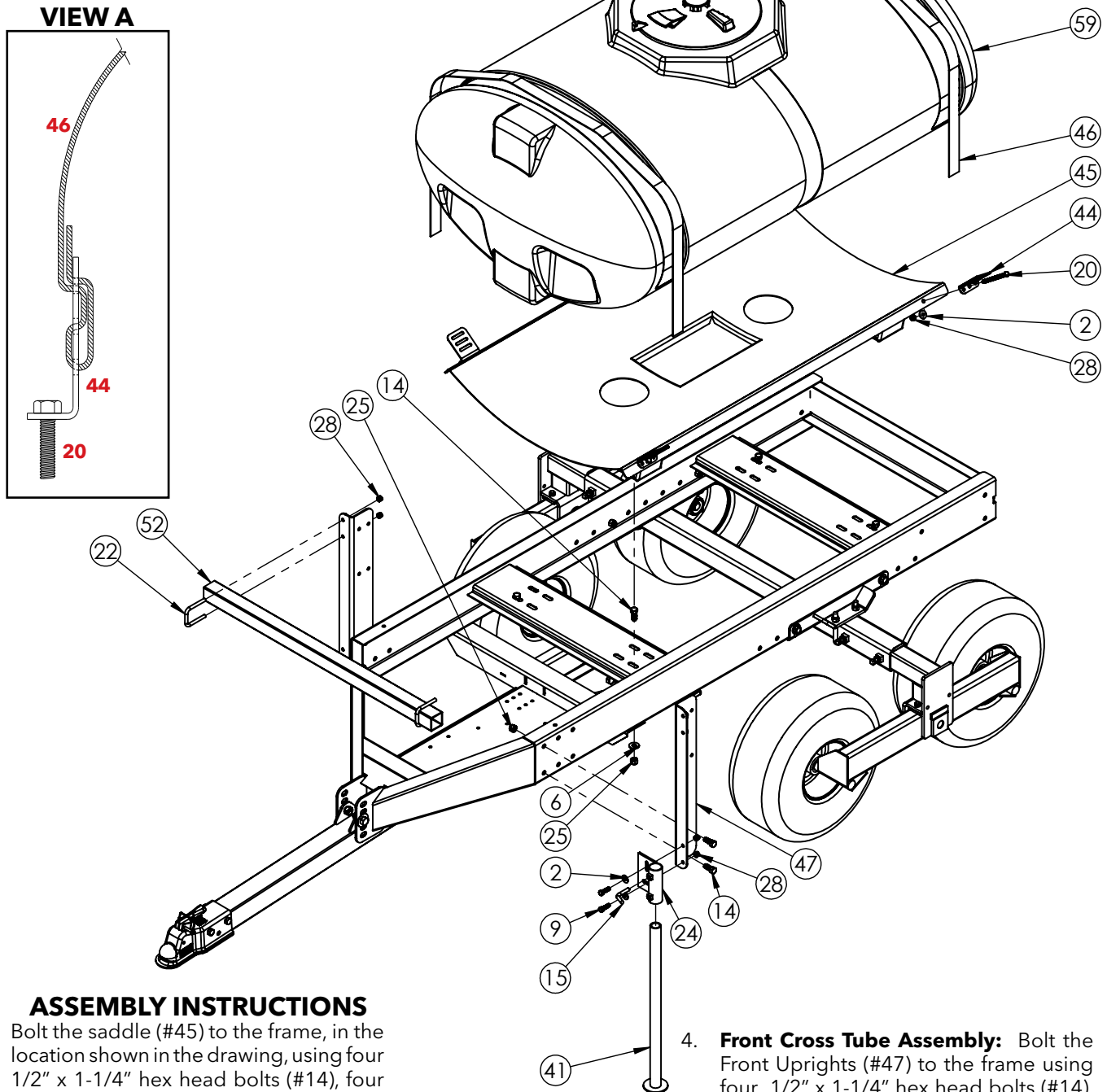
### ASSEMBLY INSTRUCTIONS

1. Insert two axle inserts (#49) into the axle tubes with shims (#53). Select your particular wheel spacing using the chart to figure the **X** dimension. The axle should be inserted to this measurement.
2. Thread four 1/2" jam nuts (#10) onto the 1/2" x 1-1/2" square head set screws (#11). Tighten the 1/2" set screws into the weld-on nuts on the back of the axle tube. Now tighten the jam nuts against the weld-on nuts to secure everything in place.
3. Mount the tires and rims (#57) to the axles using four wheel nuts (#4) per rim.
4. Remove the frame from the supporting objects and block the tires to prevent the sprayer from rolling during the rest of the assembly.



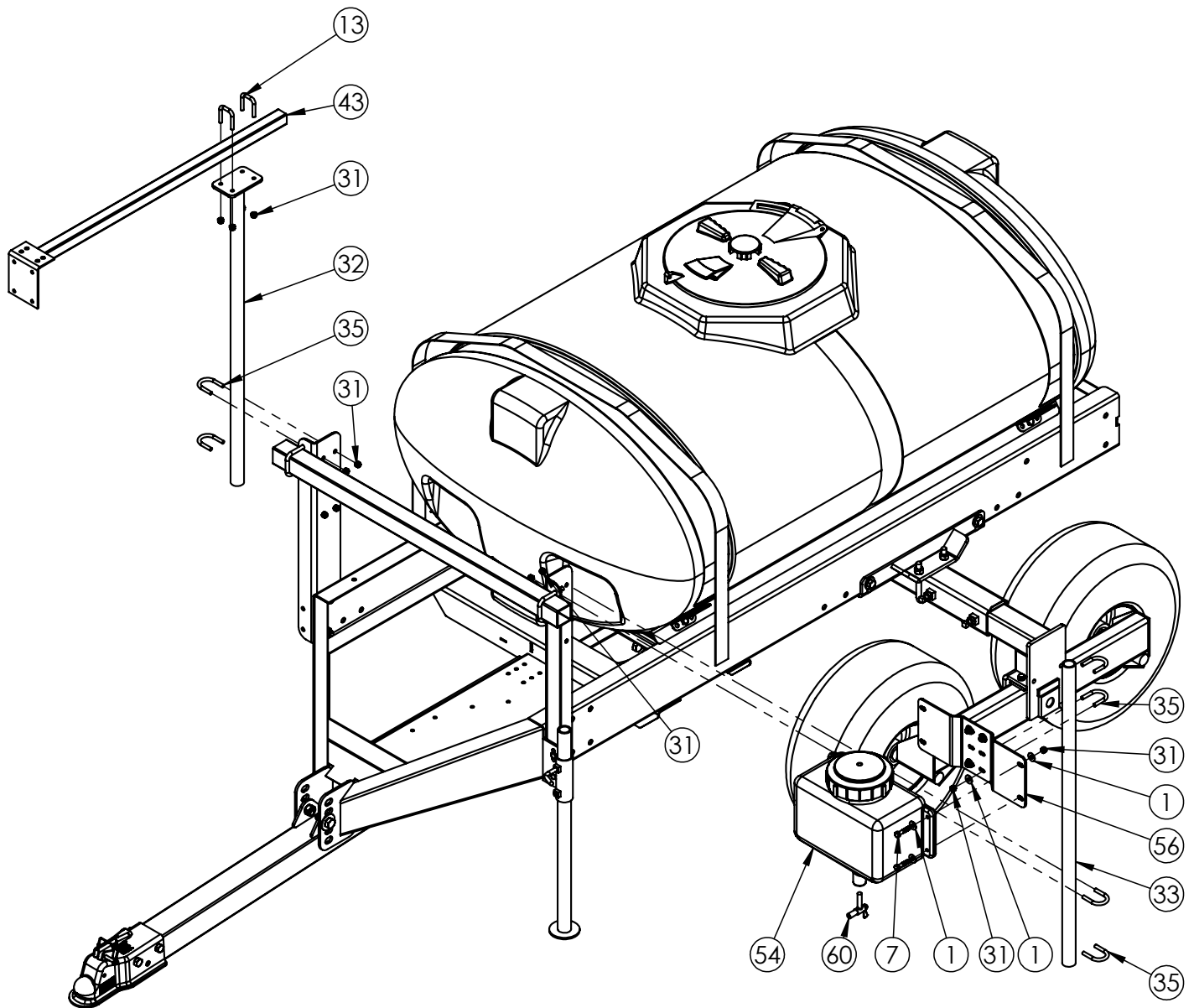
# ASSEMBLY INSTRUCTIONS

## SADDLE ASSEMBLY AND TANK INSTALLATION



### ASSEMBLY INSTRUCTIONS

1. Bolt the saddle (#45) to the frame, in the location shown in the drawing, using four 1/2" x 1-1/4" hex head bolts (#14), four 1/2" flatwashers (#6) and four 1/2" nylon insert locknuts (#25).
2. Place tank (#59) in the saddle (#45) and be sure the fillwell area of the tank is level. Weave the a polyester strap (#46) through two small strap anchors (#44), as shown in View A, one on each end. Do the same for the other strap.
3. Secure the tank in place by placing a strap over each strap area on the tank, some adjustment on the strap anchors maybe necessary, and secure the anchors with four 5/16" x 4" full thread bolts (#20), four 5/16" flatwashers (#2), and four 5/16" nylon insert locknuts (#28). **NOTE:** Be sure not to over tighten the straps.
4. **Front Cross Tube Assembly:** Bolt the Front Uprights (#47) to the frame using four 1/2" x 1-1/4" hex head bolts (#14), and four 1/2" nylon insert locknuts (#25). Bolt the cross tube (#52) as shown, using two 3/8" x 2-1/16" x 3.00" u-bolts (#22) and nylon locknuts (#28).
5. **Safety stand assembly:** Bolt the safety stand mount (#24) to the upright using two 3/8" x 1-1/4" hex head bolts (#9), two 3/8" flatwashers (#2) and 3/8" nylon insert locknuts (#28). Insert the safety stand (#41) into the mount and secure with 3/8" lock handle (#15).

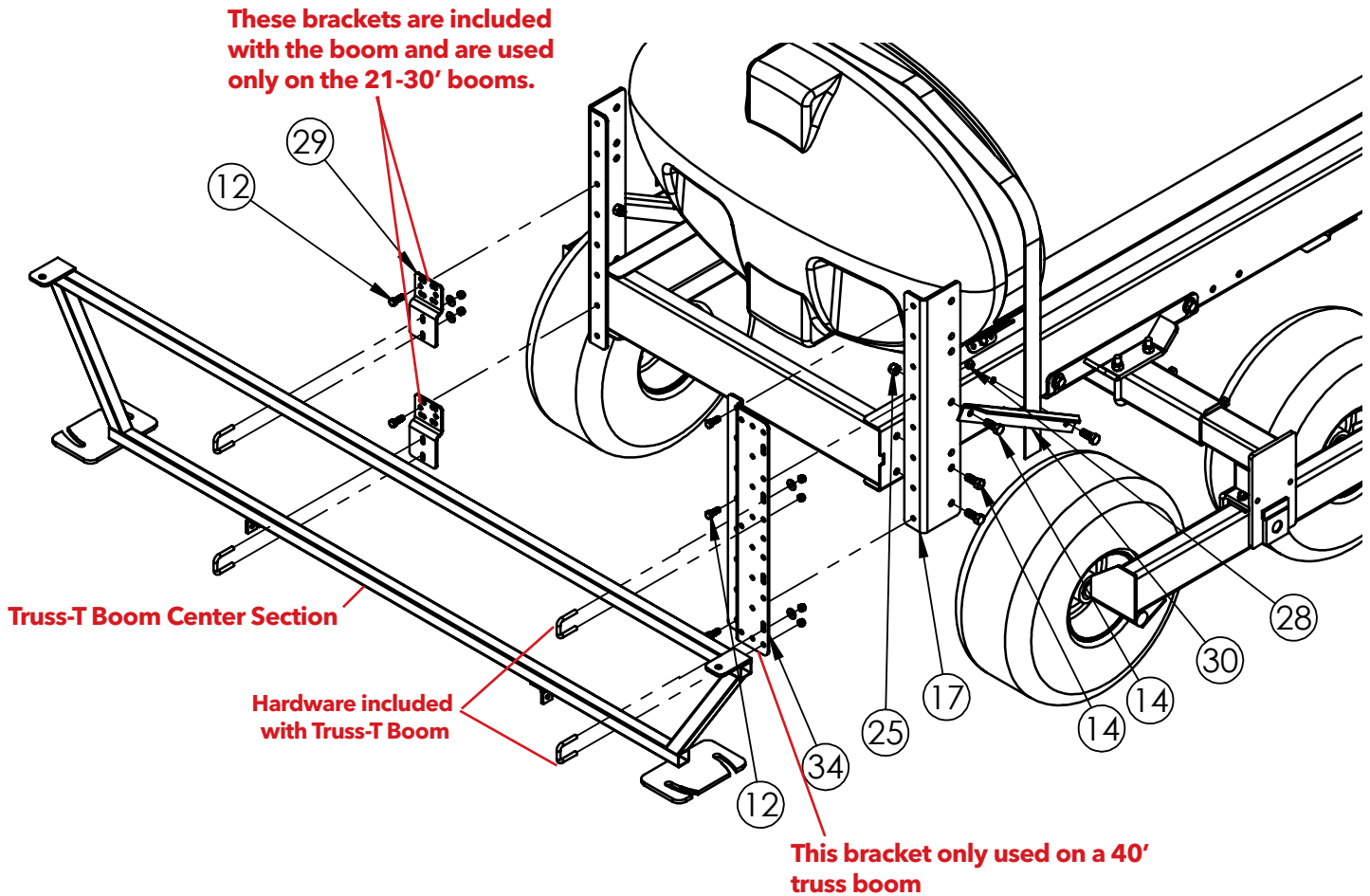


### ASSEMBLY INSTRUCTIONS

1. Bolt the vertical valve mount bracket (#32) and the accessory tube (#33) to the uprights as shown using four 5/16" x 1-3/8" x 2" round u-bolts (#35) and eight 5/16" nylon insert locknuts (#31).
2. Bolt the panel mount stem (#43) to the vertical valve mounting bracket using two 5/16" x 1-1/4" square u-bolt (#13) and four 5/16" nylon insert locknuts (#31). **NOTE:** The panel mount stem and vertical valve mounting bracket can slide, before tightening bolts and set screws, to increase or decrease the reach of the stem.
3. Bolt the wash tank bracket (#56) to the accessory tube using two 5/16" x 1-1/4" u-bolts (#35), four 5/16" flatwashers (#1), and four 5/16" nylon insert locknuts (#31). **NOTE:** The wash tank bracket can be mounted in any position on the mounting tube that is convenient for you.
4. Bolt the wash tank (#54) to the bracket using four 5/16" x 1.50" hex head bolts (#7), eight 5/16" flat washers (#1), and four 5/16" nylon insert locknuts (#31).

# ASSEMBLY INSTRUCTIONS

## 21', 30' AND 40' TRUSS-T BOOM INSTALLATION

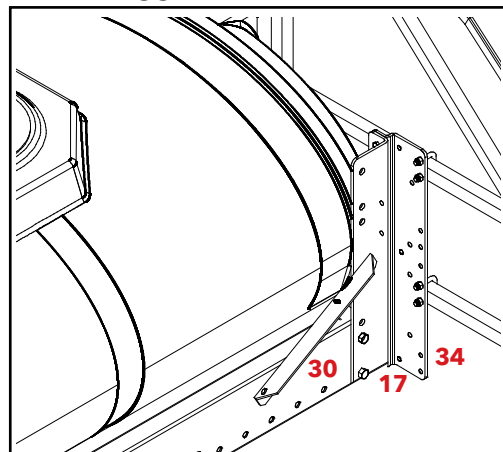


### ASSEMBLY INSTRUCTIONS

1. Attach the two boom mounting angles (#17) to the frame in the holes furthest to the rear using four 1/2" x 1-1/4" hex head bolts (#14) and four 1/2" nylon insert locknuts (#25).
2. Bolt the boom brace angles (#30) between the frame and the mounting angles in the holes shown, also using four 1/2" x 1-1/4" hex head bolts (#14) and four 1/2" nylon insert locknuts (#25).
3. Bolt the boom adapter brackets (#34) (40' boom) to the mounting angles (#17), as shown, using six 3/8" x 1" hex head bolts (#12) and six 3/8" nylon insert locknuts (#28).
4. Attach the 21'-30' Truss-T boom center section as shown using the hardware supplied with the boom.

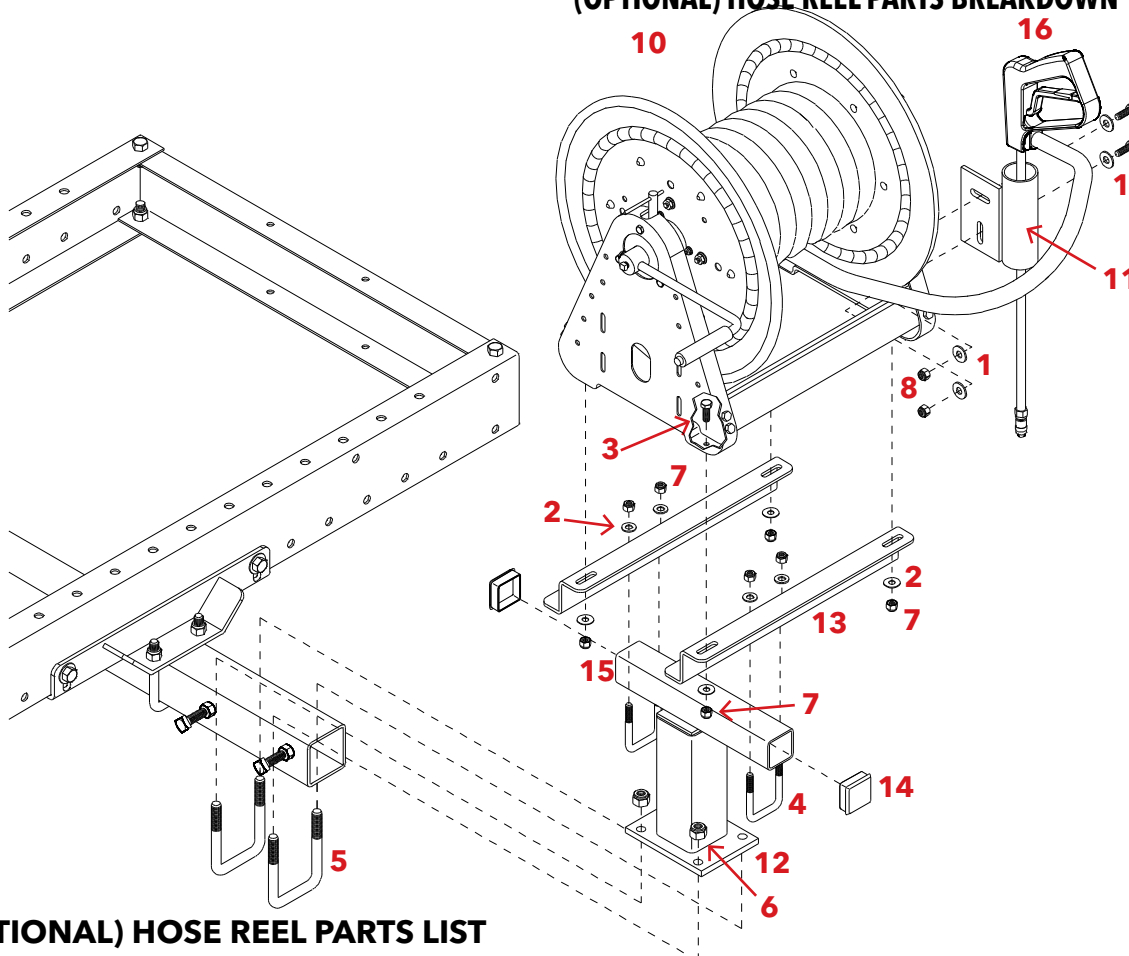
**NOTE:** You can raise or lower the boom by moving the brackets (#34), moving the mounting angles (#17), bolting the boom center section in the high or low settings or any combination thereof.

### ASSEMBLED VIEW





## (OPTIONAL) HOSE REEL PARTS BREAKDOWN AND ASSEMBLY



### (OPTIONAL) HOSE REEL PARTS LIST

ITEM	PART #	QTY	DESCRIPTION
1	00004	4	5/16" FLAT WASHER
2	00059	8	3/8" FLAT WASHER
3	00907	4	BOLT, .38" NC X 1" HEX HEAD
4	02128	4	U-BOLT, .38" NC X 2" SQUARE
5	02129	2	U-BOLT, .50" NC X 3" SQUARE
6	02178	4	NUT, .50" NC NYLON LOCK
7	02592	12	NUT, .38" NC NYLON LOCK
8	02802	2	NUT, .313" NC NYLON LOCK
9	02990	2	BOLT, .313" NC X 1" HEX HEAD
10	03279	1	HOSE REEL
11	03332-10	1	HANDGUN STORAGE BRACKET
12	03850-76	1	MOUNTING POST FOR HOSE REEL
13	03851-10	2	HOSE REEL MOUNT BRACKET
14	04193	2	CAP PLUG SQUARE
15	11830-76	1	MOUNTING TUBE
16	12434	1	18" HAND GUN
-	BA1212	1	1/2" MPT x 1/2" HOSE BARB FTG (GFP)
-	BA1234	1	1/2" MPT x 3/4" HOSE BARB FTG (GFP)
-	BA3434	1	3/4" MPT x 3/4" HOSE BARB FTG (GFP)
-	A3812	1	3/8MPT x 1/2" HOSE BARB FTG
-	BM3400	2	3/4" MPT NIPPLE FTG (GFP)
-	BTT34	1	3/4" FPT TEE (GFP)

Please order replacement parts by PART NO., DESCRIPTION, and COLOR.

ITEM	PART #	QTY	DESCRIPTION
-	UV075FP	1	3/4" FPT POLY BALL VALVE
-	B8H	2	1/2" SS GEAR CLAMP
-	B12H	2	3/4" SS GEAR CLAMP
-	04193	2	2" CAP PLUG
-	340RD	-	3/4" I.D RUBBER HOSE (14 FT)
-	120RD	-	1/2" I.D. RUBBER HOSE (100 FT)

Please order replacement parts by PART NO., DESCRIPTION, and COLOR.

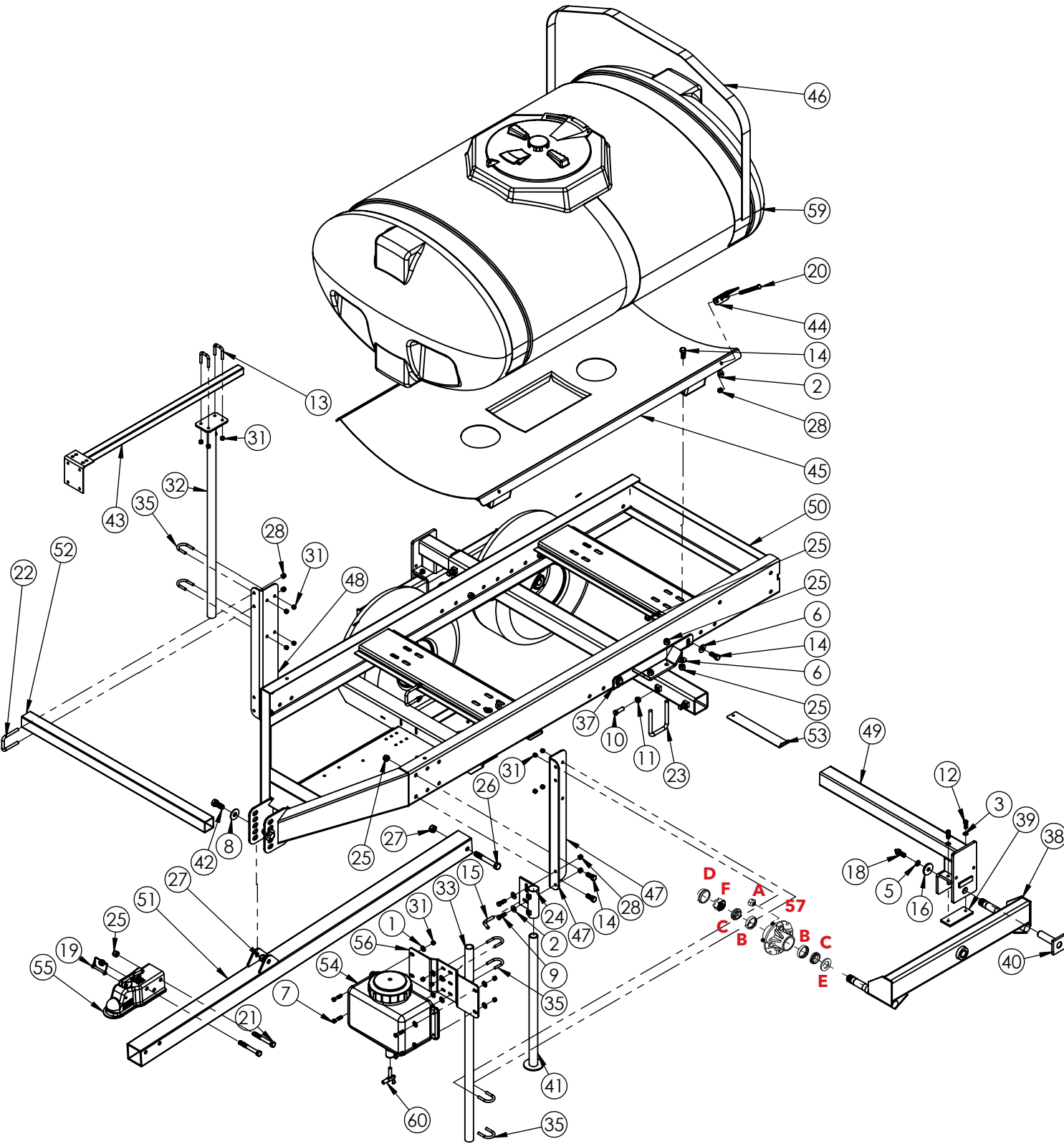
### ASSEMBLY INSTRUCTIONS

1. Bolt the mounting post (#12) to the axle, using two 1/2" x 3" square U-bolts (#5), and four 1/2" nylon insert locknuts (#6). When installing make sure you place the mounting post and the U-bolts between the two axle set screws.
2. Mount the outside hose reel bracket (#13) flush with the outside edge of the mounting post (#15) with one 3/8" x 2" square U-bolt (#4) and two 3/8" nylon insert locknut (#7). Mount the inside hose reel bracket on the other side of the vertical member of the mounting post (#15), leaving a 9" spacing between the bolts holes.
3. Place the hose reel (#10) on top of the mounts and secure with four 3/8" x 1" hex head bolts (#3) and four 3/8" nylon insert locknuts (#7).
4. The handgun storage bracket (#11) is already installed at the factory.

**NOTE:** Diagram shows left handed hose reel assembly, for clarity purposes. Hose reel may be mounted right handed style if desired.

**PARTS BREAKDOWN**

**150 & 200 GALLON ATV SPRAYER**



ITEM	PART#	DESCRIPTION	QTY
1	00004	WASHER, FLAT, .313	12
2	00059	WASHER, FLAT .375	6
3	00060	WASHER, LOCK .375	4
4	00890	NUT, .50NC WHEEL NUT	16
5	00084	WASHER, LOCK .50	2
6	00085	WASHER, FLAT .50	8
7	00372	BOLT .313NC X 1.50 HEX HEAD GR. 5	4
8	00477	WASHER, FLAT, .625	2
9	00523	BOLT, .375NC X 1.25 HEX HEAD GR. 5	2
10	00639	SET SCREW .50NC X 1.50 SQ HEAD	4
11	00640	NUT .50NC JAM	4
12	00907	BOLT, .375NC X 1.00 HEX HEAD GR.5	9
13	00909	U-BOLT, SQ, .313NC X 1.00 GR. 5	2
14	00967	BOLT, .50NC X 1.25 HEX HEAD GR. 5	20
15	01404-95	.375 LOCK HANDLE	1
16	01675-95	PIVOT PIN WASHER	2
17	01792-30	BOOM MOUNT	2
18	01796	ZERK BOLT	2
19	01855	PIN, SAFETY LOCK	1
20	01885	BOLT, .375 NC X 5.00 HEX FULL THREAD	4
21	01896	BOLT, .50 NC X 4.00 HEX HEAD GR.5	2
22	02128	U-BOLT, SQ, .375NC X 2.063 X 3.00	2
23	02129	U-BOLT, SQ, .50NC X 3.00 X 4.75	2
24	02148-30	SAFETY STAND MOUNT	1
25	02178	NUT, .50NC LOCK, NY. INSERT	26
26	02434	BOLT, .625NC X 4.50 HEX HEAD GR.5	1
27	02587	NUT, .625 NC NYLON LOCK	3
28	02592	NUT, .375NC NYLON LOCK	15
29	02678-30	UNIVERSAL BOOM MOUNTING	2
30	02693-30	BRACE ANGLE	2
31	02802	NUT, .313NC NYLON LOCK	20
32	03243-10	VERTICAL VALVE MOUNTING BRACKET	1
33	03252-30	TUBE, UPRIGHT	1
34	03275-30	BOOM MOUNT	1
35	03283	U-BOLT, RND, .313NC X 1.375 X 2.00	6
36	03285-10	AXLE TUBE	1
37	03286-10	SINGLE AXLE MOUNT ASSEMBLY	2
38	03830-10	TANDEM WALKING BEAM W/SPINDLES F/ ATV SPRAYER	2
39	03832-10	PIVOT STOP	2
40	03833-10	PIVOT PIN FOR WALKING BEAM	2
41	03883-10	SAFETY STAND	1
42	04051	BOLT, .625 NC X 1.50 HEX HEAD GR.5	2
43	05391-10	HORIZONTAL PANEL MT	1
44	05785-95	PLATE, STRAP ANCHOR	4
45	07341-30	PS200R SKID ASSEMBLY	1
46	09826	STRAP NYLON 1.75 x 86" BLACK	2
47	11680-30	LEFT UPRIGHT	1
48	11682-30	RIGHT UPRIGHT	1
49	11692-10	TANDEM AXLE INSERT	2
-	11691-10	SINGLE AXLE INSERT	2

Please order replacement parts by PART NO., DESCRIPTION, and COLOR.

ITEM	PART#	DESCRIPTION	QTY
50	11699-10	FRAME F/ ATV REDESIGN '03	1
51	11705-10	TONGUE PREASSY F/ 200 GAL ATV	1
52	11716-30	CROSS TUBE ATV TRAILER SPRAYER	1
53	11989	AXLE SHIM	2
54	12793	EYE WASH TANK WITH LID	1
55	12925	2" BALL COUPLER BOLT ON	1
56	14471-76	2.5 GAL. EYE WASH TANK BRACKET	1
57	5389	RIM W/ MOUNTED TIRE (TANDEM AXLE)	4
-	5775	RIM W/ MOUNTED TIRE (SINGLE AXLE)	2
58	5416	4-BOLT HUB (TANDEM AXLE)	4
-	5341-10	4-BOLT HUB/SPINDLE (SINGLE AXLE)	2
59	PE200RA	200 GAL POLY ELIP. TANK	1
60	PL2S	SPOUT, FOR EYE WASH TANK	1

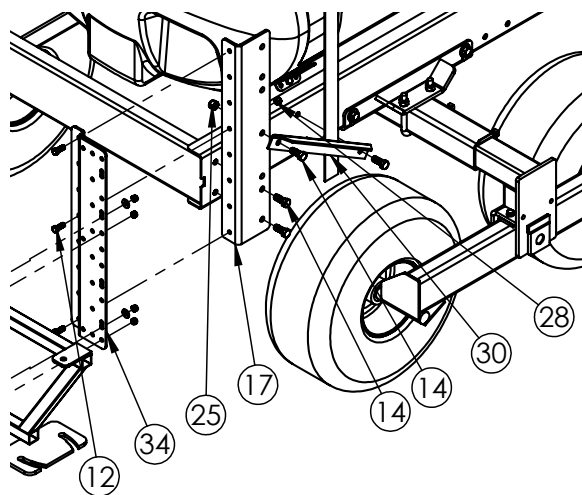
Please order replacement parts by PART NO., DESCRIPTION, and COLOR.

## 4-BOLT HUB PARTS LIST

ITEM	PART#	DESCRIPTION	QTY
58	5416	4-BOLT HUB ASSEMBLY	1
A	00890	1/2"-13 UNF WHEEL NUT	4
B	01748	INNER & OUTER BEARING RACES	2
C	01749	INNER & OUTER WHEEL BEARINGS	2
D	01751	DUST CAP	1
E	02362	HUB SEAL	1
F	03193	1"-14 UNF CASTLE NUT	1

Please order replacement parts by PART NO., DESCRIPTION, and COLOR.

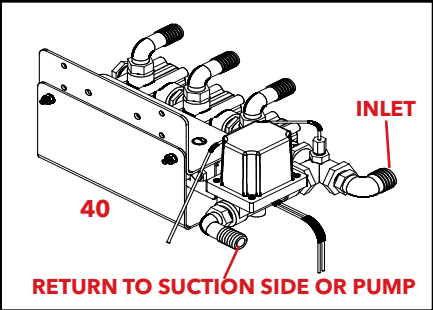
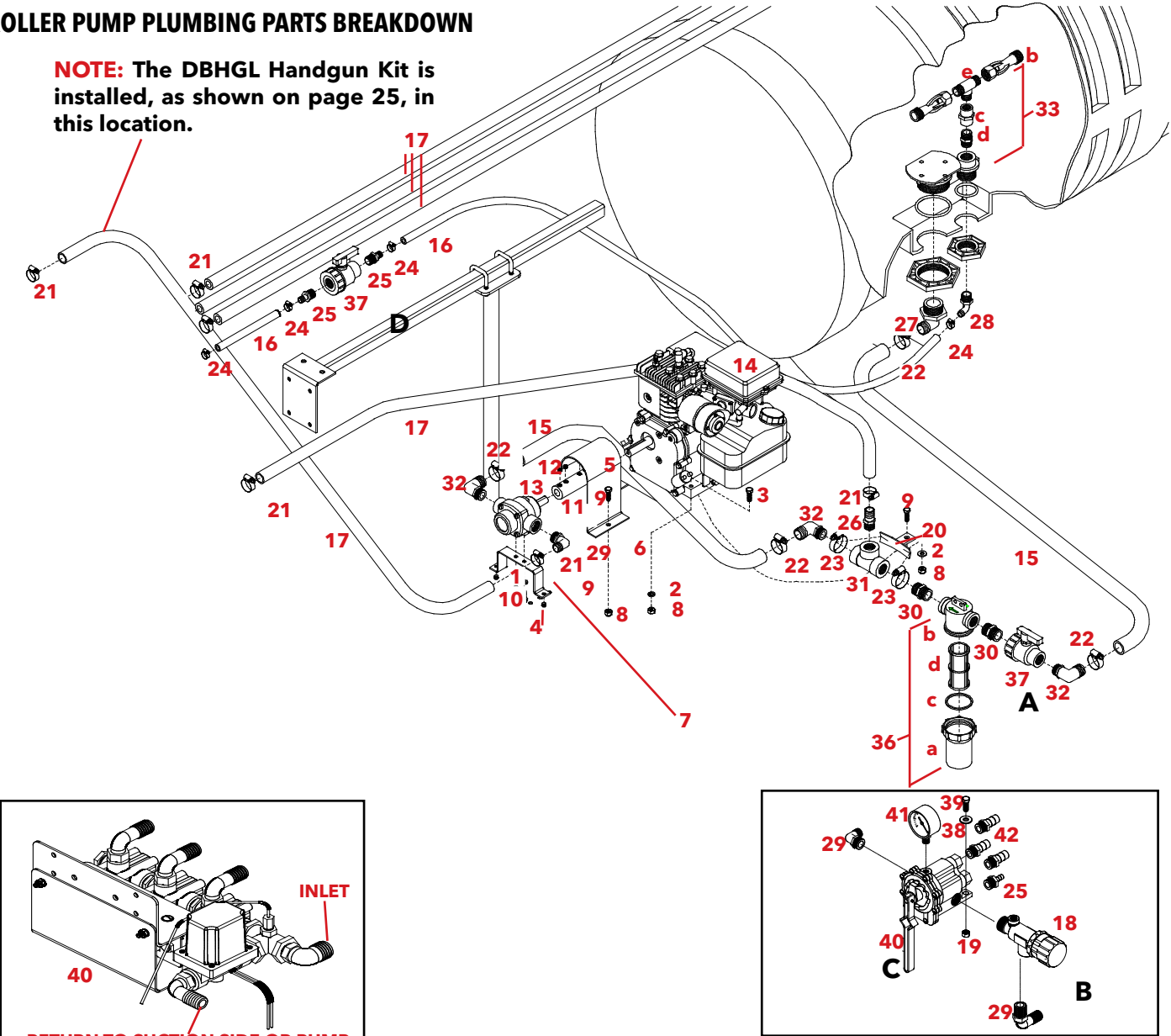
## BOOM MOUNTS (REAR VIEW)



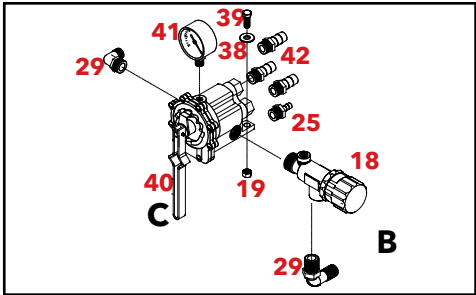
PLUMBING PARTS BREAKDOWN

ROLLER PUMP PLUMBING PARTS BREAKDOWN

**NOTE:** The DBHGL Handgun Kit is installed, as shown on page 25, in this location.

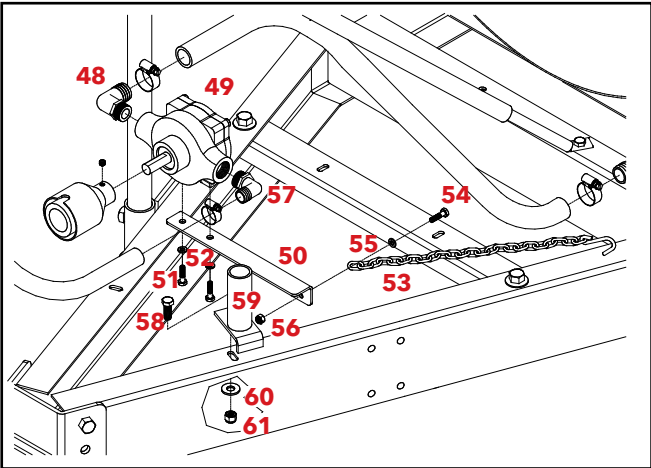


**ELECTRIC CONTROL**  
**9465038**



**MANUAL CONTROL**  
**9465037**

**C6500D ROLLER PUMP**



**NOTE:** When a PTO driven roller pump (C6500D) is ordered, these parts shown above replace parts utilized when a gas engine roller pump (C4101GE) is ordered.

**C6500D ROLLER PUMP PARTS LIST**

REF. NO.	PART NO.	QTY.	DESCRIPTION
48.	EL3410	1	3/4" MPT x 1" Elbow Fitting (GFP)
49.	C6500	1	Roller Pump (only)
-	1321 0012	1	Quick Coupler Adapter (540 RPM PTO)
50.	04298-70	1	Pump Mounting Angle
51.	04305	2	5/16"-18 UNC x 1/2" Hex Head Bolt (Gr.5)
52.	00036	2	5/16" Lockwasher
53.	04299	1	Roller Pump Chain w/ S-hook
54.	01076	1	1/4"-20 UNC x 3/4" Hex Head Bolt
55.	00214	1	1/4" Flatwasher
56.	02772	1	1/4"-20 UNC Nylon Insert Locknut
57.	BEL3434	1	3/4" MPT x 3/4" Elbow Fitting (GFP)
58.	02990	1	5/16"-18 UNC x 1" Hex Head Bolt (Gr.5)
59.	00857-30	1	Roller Pump Storage Bracket
60.	00004	1	5/16" Flatwasher
61.	02802	1	5/16"-18 UNC Nylon Insert Locknut

Please order replacement parts by **PART NO.** and **DESCRIPTION.**

REF. NO.	PART NO.	QTY.	DESCRIPTION
-	<b>C4101GE</b>	<b>1</b>	<b>Roller Pump w/ 3.5 HP Gas Engine</b>
1.	<b>00036</b>	2	5/16" Lockwasher
2.	<b>00004</b>	8	5/16" Flatwasher
3.	<b>00372</b>	4	5/16"-18 UNC x 1-1/2" Hex Head Bolt
4.	<b>01872</b>	1	Rubber Bumper
5.	<b>02653-70</b>	1	Shaft Shield
6.	<b>02650-10</b>	1	Gas Engine/Pump Mounting Plate
7.	<b>02660-70</b>	1	Roller Pump Mounting Plate
8.	<b>02802</b>	9	5/16"-18 UNC Nylon Insert Locknut
9.	<b>02990</b>	5	5/16"-18 UNC x 1" Hex Head Bolt
10.	<b>04305</b>	2	5/16"-18 UNC x 1/2" Hex Head Bolt
11.	<b>04880-95</b>	1	Pump/Engine Coupler
12.	<b>07174</b>	4	1/4"-20 UNC x 3/4" Sq. Head Set Screw
13.	<b>C4101</b>	1	Roller Pump
-	<b>XL4101</b>	1	Silver Cast Roller Pump
14.	<b>GE3HP</b>	1	3.5 HP Briggs & Stratton Gas Engine
-	<b>GH4HP</b>	1	4 HP Honda Gas Engine

-	-	-	<b>Plumbing Package</b>
15.	<b>1010RB</b>	-	1" I.D. Rubber Hose
16.	<b>120RB</b>	-	1/2" I.D. Rubber Hose
17.	<b>340RB</b>	-	3/4" I.D. Rubber Hose
18.	<b>23340PP</b>	1	Pressure Relief Valve
2.	<b>00004</b>	5	5/16" Flatwasher
19.	<b>02592</b>	4	3/8"-16 UNC Nylon Insert Locknut
8.	<b>02802</b>	9	5/16"-18 UNC Nylon Insert Locknut
9.	<b>02990</b>	5	5/16"-18 UNC x 1" Hex Head Bolt
20.	<b>05596-95</b>	1	Plumbing Hanger
21.	<b>B12H</b>	10	3/4" SS Gear Clamp
22.	<b>B20H</b>	4	1" SS Gear Clamp
23.	<b>B24H</b>	2	1-1/4" SS Gear Clamp
24.	<b>B8H</b>	4	1/2" SS Gear Clamp
25.	<b>BA3412</b>	3	3/4" MPT x 1/2" Hose Barb Fitting (GFP)
26.	<b>BA3434</b>	1	3/4" MPT x 3/4" Hose Barb Fitting (GFP)
27.	<b>BEL114 1</b>	1	1-1/4" MPT x 1" Elbow Fitting
28.	<b>BEL1212</b>	1	1/2" MPT x 1/2" Elbow Fitting (GFP)

29.	<b>BEL3434</b>	3	3/4" MPT x 3/4" Elbow Fitting (GFP)
30.	<b>BM3400</b>	2	3/4" MPT Nipple Fitting (GFP)
31.	<b>BTT34</b>	1	3/4" FPT Tee (GFP)
32.	<b>EL3410</b>	3	3/4" x MPT x 1" Elbow Fitting (GFP)
*33.	<b>D3371PS</b>	1	Tank Double Agitation
*34.	<b>P114AV</b>	1	1-1/4" Tank Outlet Fittings
*35.	<b>P012DA</b>	1	1/2" Tank Fittings
*36.	<b>RVF34 80</b>	1	3/4" Line Strainer w/80 Mesh Screen
37.	<b>UV075FP</b>	2	3/4" Poly Ball Valve
38.	<b>00059</b>	2	3/8" Flatwasher
39.	<b>00523</b>	2	3/8"-16 UNC x 1-1/4" Hex Head Bolt
40.	<b>AA171</b>	1	Three Section Tee Valve
-	<b>9465038</b>	1	Electric Control Valves
41.	<b>160GB</b>	1	160 lb. Brass Gauge
42.	<b>BA1234</b>	3	1/2" MPT x 3/4" Hose Barb Fitting (GFP)

33.	<b>D3371PS</b>	1	Double Agitation Breakdown
b.	<b>5044 1</b>	2	Jet Agitation Wand
c.	<b>FC1200</b>	1	1/2" FPT Coupling
d.	<b>M1200</b>	1	1/2" MPT Short Nipple
e.	<b>R1212</b>	1	1/2" MPT Tee

36.	<b>RVF34 80</b>	1	3/4" Line Strainer Breakdown
a.	<b>RVF34B</b>	1	Strainer Bowl
b.	<b>RVF34C</b>	1	Strainer Cap
c.	<b>RVF34GV</b>	1	Viton O-ring
d.	<b>RVF380</b>	1	80 Mesh Screen

**NOTE:** \*=Further Part Breakdown

## OPERATING INSTRUCTIONS

1. Fill the tank with water.
2. Open the Ball valve **(A)** in the pump intake line.
3. Open (counter clockwise) the pressure relief valve **(B)**.
4. Open the Tee valve **(C)** so that all the boom sections are spraying.
5. Open the agitation valve **(D)**.
6. Start and run pump.
7. Slowly close the pressure relief valve **(B)** until the desired spraying pressure is reached with the boom spraying.
8. If adequate spraying pressure cannot be reached, slowly close the agitation valve **(D)** until the desired spraying pressure is reached.
9. Check for leaks.
10. Check all fasteners, periodically, on the sprayer for proper torque according to torque chart on page 13.



## CENTRIFUGAL (DHC155) PUMP PLUMBING PARTS BREAKDOWN



**MANUAL CONTROL**  
**9465037**

## CENTRIFUGAL (DHC155) PUMP PLUMBING PARTS LIST

REF. NO.	PART NO.	QTY.	DESCRIPTION
-	<b>DHC155</b>	<b>1</b>	<b>Centrifugal Pump w/5 HP Gas Engine</b>
1.	<b>00372</b>	4	5/16"-18 UNC x 1-1/2" Hex Head Bolt
2.	<b>02650-10</b>	1	Gas Engine/Pump Mounting Plate
3.	<b>02802</b>	4	5/16"-18 UNC Nylon Insert Locknut
4.	<b>DHC155</b>	1	Centrifugal Pump
5.	<b>GE5HP</b>	1	5 HP Briggs & Stratton Gas Engine
-	<b>GH5.5HPT</b>	1	5.5 HP Honda Gas Engine (optional)

-	-	-	<b>Plumbing Package</b>
6.	<b>1010RB</b>	-	1" I.D. Rubber Hose
7.	<b>1140RB</b>	-	1-1/4" I.D. Rubber Hose
8.	<b>340RB</b>	-	3/4" I.D. Rubber Hose
9.	<b>00004</b>	5	5/16" Flatwasher
10.	<b>02592</b>	3	3/8"-16 UNC Nylon Insert Locknut
3.	<b>02802</b>	13	5/16"-18 UNC Nylon Insert Locknut
11.	<b>02990</b>	5	5/16"-18 UNC x 1" Hex Head Bolt
12.	<b>05596-95</b>	1	Plumbing Hanger
13.	<b>B12H</b>	6	3/4" SS Gear Clamp
14.	<b>B16H</b>	4	1" SS Gear Clamp
15.	<b>B24H</b>	6	1-1/4" SS Gear Clamp
16.	<b>B8H</b>	2	1/2" SS Gear Clamp
17.	<b>BA1234</b>	3	1/2" MPT x 3/4" Hose Barb Fitting
18.	<b>BA114</b>	2	1-1/4" Hose Barb Fitting
19.	<b>BEL114</b>	2	1-1/4" MPT Elbow Fitting
20.	<b>BEL114 1</b>	1	1-1/4" MPT x 1" Elbow Fitting
21.	<b>BEL1212</b>	1	1/2" MPT x 1/2" Elbow Fitting
22.	<b>BEL3412</b>	1	3/4" MPT x 1/2" Elbow Fitting
23.	<b>BM3400</b>	3	3/4" MPT Nipple Fitting
24.	<b>BRB112 114</b>	2	1-1/2" MPT x 1-1/4" FPT Reducer
25.	<b>BTT34</b>	1	3/4" FPT Tee
26.	<b>EL3410</b>	2	3/4" MPT x 1" Elbow Fitting

Please order replacement parts by **PART NO.** and **DESCRIPTION.**

27.	<b>F3400</b>	2	3/4" FPT Plug
*28.	<b>D3371PS</b>	1	Tank Double Agitation
*29.	<b>P114PAV</b>	1	1-1/4" Tank Outlet Fittings
*30.	<b>P012D</b>	1	1/2" Tank Fittings
*31.	<b>RVF34 80</b>	1	3/4" Line Strainer w/80 Mesh Screen
32.	<b>UV125FP</b>	1	1-1/4" Poly Ball Valve
33.	<b>00059</b>	2	3/8" Flatwasher
34.	<b>00523</b>	2	3/8"-16 UNC x 1-1/4" Hex Head Bolt
35.	<b>AA17I</b>	1	Three Section Tee Valve
-	<b>9465038</b>	1	Electric Valve Control
36.	<b>100GB</b>	1	100 lb. Brass Gauge

28.	<b>D3371PS</b>	1	Double Agitation Breakdown
a.	<b>00128</b>	2	1/2" Retainer for Agitation Wand (not shown)
b.	<b>5044 1</b>	2	Jet Agitation Wand
c.	<b>FC1200</b>	1	1/2" FPT Coupling
d.	<b>M1200</b>	1	1/2" MPT Short Nipple
e.	<b>R1212</b>	1	1/2" MPT Tee

29.	<b>P114PAV</b>	1	1-1/4" Tank Outlet Breakdown
a.	<b>5078V</b>	1	Large Viton O-ring
b.	<b>CP114PAV</b>	1	1-1/4" Anti-Vortex Center Portion
c.	<b>N8P</b>	1	Large Nut for Tank Fitting

30.	<b>P012D</b>	1	1/2" Tank Fitting Breakdown
a.	<b>5077V</b>	1	Small Viton O-ring
b.	<b>CP012PD</b>	1	Center Portion for 1/2" Double Thread
c.	<b>N5P</b>	1	Small Nut for Tank Fitting

31.	<b>RVF34 80</b>	1	3/4" Line Strainer Breakdown
a.	<b>RVF34B</b>	1	Strainer Bowl
b.	<b>RVF34C</b>	1	Strainer Cap
c.	<b>RVF34GV</b>	1	Viton O-ring
d.	<b>RVF380</b>	1	80 Mesh Screen

**NOTE:** \*=Further Part Breakdown

## OPERATING INSTRUCTIONS

- Run approximately 50 gallons of water into the tank.
- Open the poly ball valve **(A)** in the pump intake line. Important: Remove top plug on pump to bleed all air from the suction line to the pump or damage will result to the seals. **(Pump cannot be run dry).**
- Open the wedge valve **(B)** on the Tee valve.
- Close the wedge agitation valve **(C)** on the plumbing sub-assembly. (Located on the front crossmember.)
- Turn the Tee valve handle **(D)** so all three boom sections are open.
- Start the pump and run at approx. 540 RPM.
- Open the wedge valve **(B)** on the Tee valve until the gauge reads 7-10

PSI over your desired spraying pressure with all three boom sections spraying. **NOTE:** The spraying pressure may vary depending on the size of tip and the chemical being sprayed.

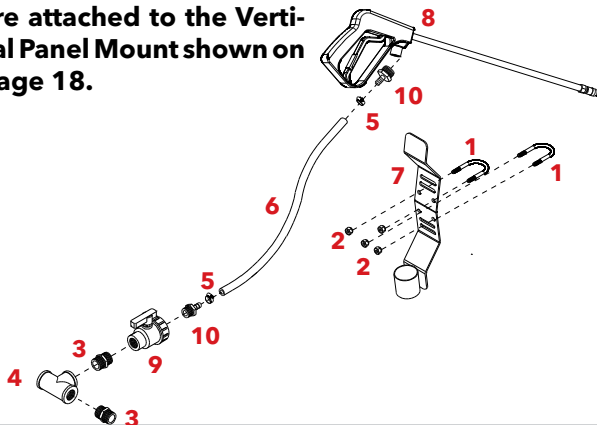
- Open the wedge agitation valve **(C)** until the gauge drops to your desired spraying pressure.

**Example:** If desired spraying pressure is 30 PSI open the wedge valve on Tee valve until the pressure reads 37 PSI. After this, open the wedge agitation valve until the gauge drops back to 30 PSI. (This is to ensure the recommended pressure to tank jet agitators).

- Check for leaks.
- Check tip wear and pressures periodically.

## (DBHGL) HANDGUN KIT PARTS BREAKDOWN

**NOTE:** The Hand Gun Holder and Hose Holder are attached to the Vertical Panel Mount shown on page 18.



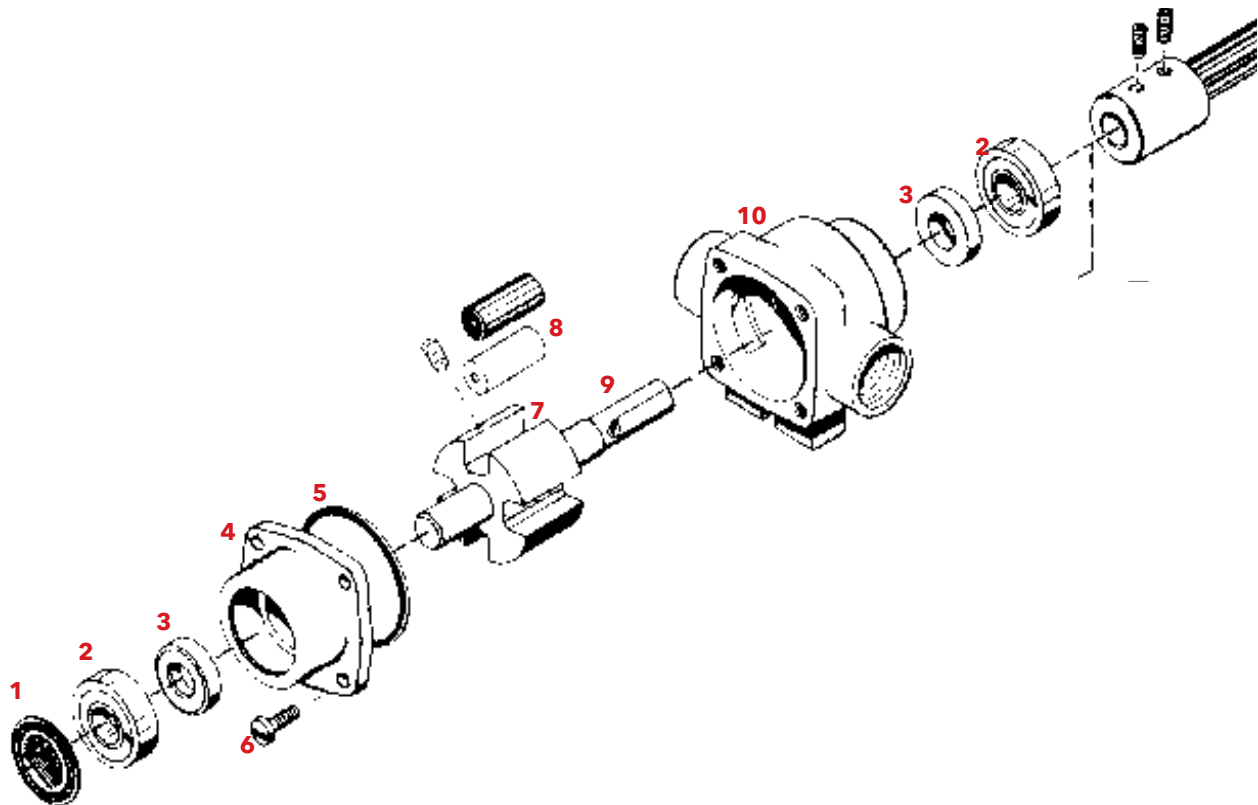
## (DBHGL) HANDGUN KIT PARTS LIST

REF. NO.	PART NO.	QTY	DESCRIPTION
1.	<b>03283</b>	2	5/16"-18 UNC x 2" U-Bolt
2.	<b>02802</b>	4	5/16"-18 UNC Nylon Insert Locknut
3.	<b>BM3400</b>	2	3/4" MPT Nipple Fitting (GFP)
4.	<b>BTT34</b>	1	3/4" FPT Tee (GFP)
5.	<b>B6H</b>	2	3/8" SS Gear Clamp
6.	<b>380RB</b>	25ft	3/8" I.D. Rubber Hose
7.	<b>05595-70</b>	1	Hose/Gun Holder Rack
8.	<b>12434</b>	1	18" Hand Gun
9.	<b>UV075FP</b>	1	3/4" FPT Poly Ball Valve
10.	<b>A3838</b>	2	3/4" MGHT x 3/4" Hose Barb

Please order replacement parts by **PART NO.** and **DESCRIPTION.**

# ROLLER PUMP PARTS LIST

## CAST IRON C4101 & SILVER CAST XL4101



### CAST IRON ROLLER PUMP PARTS LIST C4101 & C4001

REF. NO.	PART NO.	QTY.	DESCRIPTION
1.	<b>0600</b>	1	Name Plate (specify pump model #.)
2.	<b>BAC37</b>	2	Sealed Ball Bearing
3.	<b>*2107 0002</b>	2	Viton Seal (standard)
4.	<b>0200 4101C</b>	1	End Plate (cast iron)w/standard seal
5.	<b>*1720 0104</b>	1	O-ring Gasket for End Plate
6.	<b>2200 0009</b>	4	End Plate Screw
7.	<b>0300 4101C</b>	1	Rotor (cast iron)and Shaft Assembly
-	<b>0500 6600</b>	1	Shaft ONLY
8.	<b>2230 0002</b>	1	Rotor Set Screw
9.	<b>*1005 0004</b>	4	Super Rollers (standard)
10.	<b>0100 4101C</b>	1	Body (cast iron) w/standard seal
-	<b>3430 0158</b>	-	<b>Repair Kit:</b> contains items marked (*)

### SILVER CAST ROLLER PUMP PARTS LIST XL4101 & XL4001

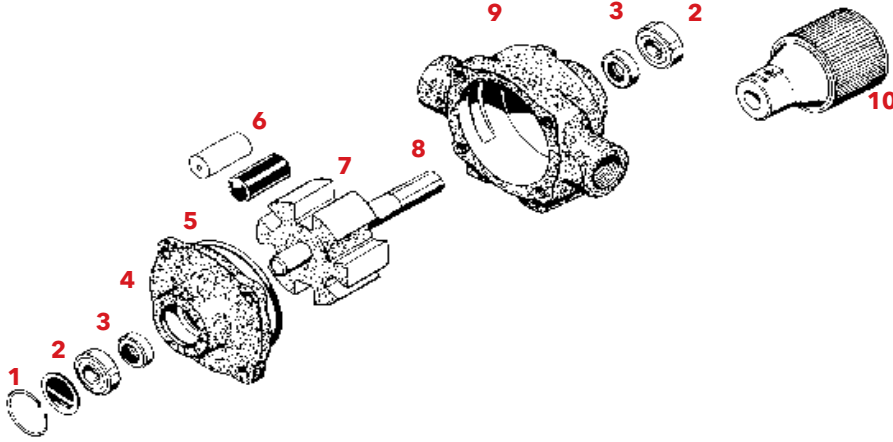
REF. NO.	PART NO.	QTY.	DESCRIPTION
1.	<b>0600</b>	1	Name Plate (specify pump model #)
2.	<b>BAC37</b>	2	Sealed Ball Bearing
3.	<b>*2107 0002</b>	2	Viton Seal (standard)
4.	<b>0200 4101X</b>	1	End Plate (silver cast) w/standard seal
5.	<b>*1720 0104</b>	1	O-ring Gasket for End Plate
6.	<b>2200 0009</b>	4	End Plate Screw
7.	<b>0300 4101X</b>	1	Rotor (silver cast) and shaft assembly
-	<b>0500 6600</b>	-	Shaft ONLY
8.	<b>2230 0002</b>	1	Rotor Set Screw
9.	<b>*1005 0004</b>	4	Super Rollers (standard)
10.	<b>0100 4101X</b>	1	Body (silver cast) w/standard seal
-	<b>3430 0158</b>	-	<b>Repair Kit:</b> contains items marked (*)

RETURN TO SUCTION SIDE OR PUMP



# PTO DRIVEN ROLLER PUMP PARTS LIST

## CAST IRON C6500D & SILVER CAST XL6500



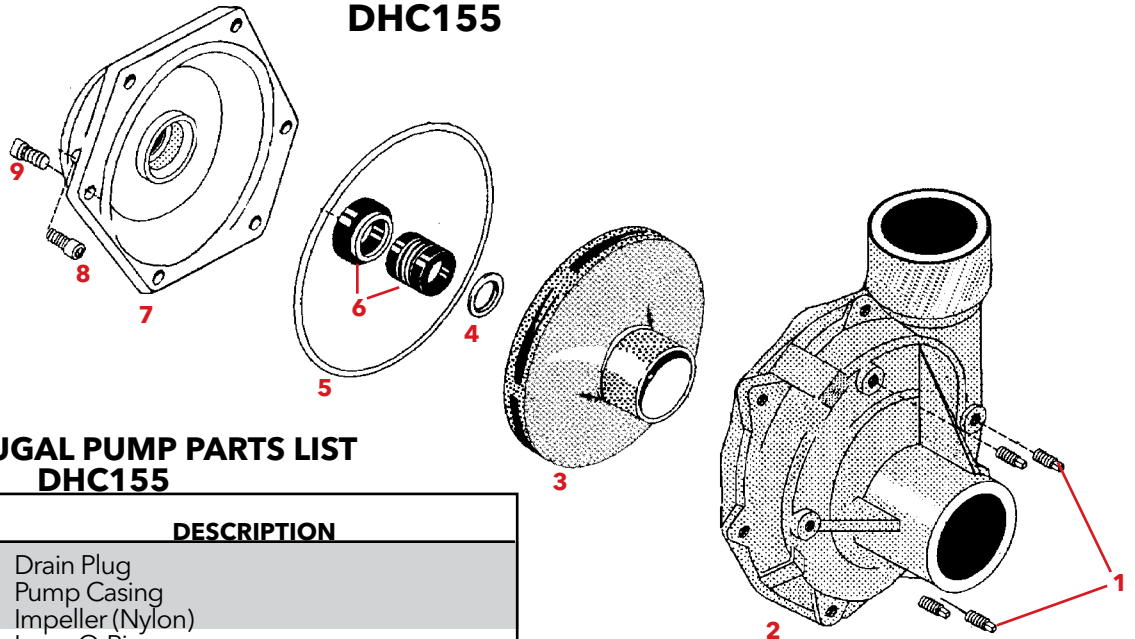
### SILVER CAST ROLLER PUMP PARTS LIST XL6500

### CAST IRON ROLLER PUMP PARTS LIST C6500D

REF. NO.	PART NO.	QTY.	DESCRIPTION
1.	0600	1	Name Plate (specify pump model no.)
2.	BAC37	2	Ball Bearing (sealed)
3.	*2107 0002	2	Viton Seal (standard)
4.	0200 6600X	1	End Plate (Silver Cast) (includes Seal #3)
5.	*1720 0008	1	O-ring for End Plate
6.	*1005 0004	6	Super Roller
-	1002 0004	6	Polypropylene Roller (optional)
7.	0300 6600X	1	Rotor with Shaft (Silver Cast)
8.	0500 6600	1	Shaft Only
9.	0100 6600X	1	Body (Silver Cast) (includes Seal #3)
10.	1321 0012	1	Quick Coupler Adapter-Multi Speed
-	3430 0380	-	Repair Kit: contains items marked (*)

REF. NO.	PART NO.	QTY.	DESCRIPTION
1.	0600	1	Name Plate (specify pump model no.)
2.	BAC37	2	Ball Bearing (sealed)
3.	*2107 0002	2	Viton Seal (standard)
4.	0200 6600C	1	End Plate (includes Seal #4)
5.	*1720 0008	1	O-ring for End Plate
6.	*1005 0004	6	Super Roller
7.	0300 6600C	1	Rotor with Shaft
8.	0500 6600	1	Shaft Only
9.	0100 6600C	1	Body (includes Seal #4)
10.	1321 0012	1	Quick Coupler Adapter-Multi Speed
-	3430 0380	-	Repair Kit: contains items marked (*)

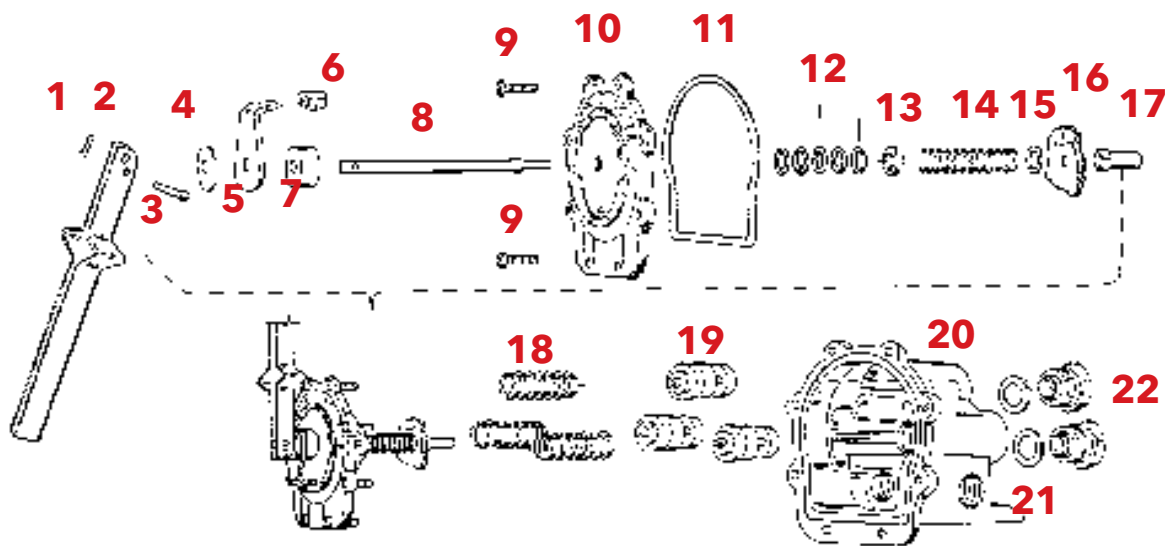
### CENTRIFUGAL PUMP PARTS LIST DHC155



### CENTRIFUGAL PUMP PARTS LIST DHC155

REF. NO.	PART NO.	QTY.	DESCRIPTION
1.	2404 0007	4	Drain Plug
2.	0153 9200C	1	Pump Casing
3.	0404 9200P	1	Impeller (Nylon)
4.	*1700 0121	1	Inner O-Ring
5.	*1720 0180	1	Outer O-Ring
6.	*2120 0034	1	Mechanical Seal (Viton)
7.	0707 9200	1	Flange
8.	2210 0098	4	Engine Mounting Bolt
9.	2210 0086	6	Pump Case Bolt
-	5565	-	Repair Kit: contains items marked (*)

AA171 TEE VALVE PARTS BREAKDOWN



(AA171) TEE VALVE PARTS LIST

REF. NO.	PART NO.	DESCRIPTION
1.	8012 1/2SS	1/16" x 1/2" Cotter Pin, stainless steel
2.	6849IZP	Handle, steel & zinc plated
2.A	15490SS	Rivet, stainless steel
* 3.	7206IZP	Rivet, steel, zinc plated
* 4.	6976IZP	Handle Washer, steel, zinc plated
5.	12128IZP	Selector Shield, steel, zinc plated
* 6.	12127CE	Selector Shield Tip, celcon
7.	12129CE	Spacer, celcon
8.	6972SS	Main Stem, stainless steel
* 9.	7980IZP	Screw, steel, zinc plated (8 required)
10.	12126AL	Cover Plate, aluminum
* 11.	6975BU	Gasket, buna-N
* 12.	5809LEA	Packing, thermo-leather (5 required)
13.	12130SS	Packing Gland, stainless steel
14.	7254SS	Main Spring, stainless steel
15.	7987SS	Washer, stainless steel
16.	6971AL	Selector Cam, aluminum
17.	6973SS	Guide Nut, stainless steel
18.	6959SS	Valve Spring, stainless steel (3 req'd.)
19.	6956CE	Valve Stem, celcon (3 required)
20.	6934 6AL	Body, aluminum
* 21.	6958POL	Seat Plate, polyethylene (3 required)
22.	7262AL	Outer Adapters, aluminum ( required)
	AB17	Spare Parts Kit (includes items with *)

Please order replacement parts by PART NO. and DESCRIPTION.

**Downtime caused by field breakdowns is costly and time consuming. Many breakdowns can be eliminated by periodic equipment maintenance. By spending time reviewing this checklist before seasonal spraying application time and following proper after-season care, you can save time and money later.**



## **WARNING: To Prevent Serious Injury Or Death**

- **Keep hands, feet, and loose clothing away from rotating parts.**
- **Wear protective clothing recommended by your chemical and fertilizer manufacturer when working with chemicals.**

### **Check Before Going To The Field :**

#### **1. NOZZLES**

Check tip for excessive wear by checking for grooves in or near tip opening. Check nozzle spacing by starting at center and working outwards. Check boom for proper height.

#### **2. HOSES**

Check all hoses for worn or soft spots. Be sure all hose clamps are tightened and hoses are not kinked or pinched. Check for leakage in any lines.

#### **3. TANK**

Remove and clean agitator orifices. Check orifices for excessive wear by checking for grooves in or near orifice opening. Inspect fitting and grommets to insure they are in good condition.

#### **4. CONTROLS**

Check for leakage, plugging, or wear on all valves, fittings, etc. Clean off any build up of foreign material.

#### **5. PUMP**

Check to be sure pump turns freely.

#### **6. FRAME**

Be sure all bolts are tightened.

#### **7. REPLACEMENT PARTS**

Replace all worn or damaged parts.

### **After Season Care:**

**NOTE: It is important to wear proper safety equipment when cleaning the sprayer. See your chemical or fertilizer package for this information.**

1. After spraying chemicals, run water mixed with cleaners through tank, pump and all hose hookups. If wettable powder dries out in the system, it is very difficult to put back into suspension and can cause malfunction, damage or injury.
2. When cleaned, tank should have all openings closed or covered to keep dirt from entering.
3. Pump should be flushed with soluble oil and pump ports plugged to keep out moisture and air.
4. Disassemble tips and rinse with water or cleaning solution. (Appropriate for chemical sprayed).
5. Clean tip opening with a wooden toothpick. Never use wire or hard object that could distort opening.
6. Dispose of all unused chemicals or solutions in a proper and ecologically sound manner.
6. Water rinse and dry tips before storing.

**NOTE: DEMCO does not and will not make any recommendations concerning application of various chemicals or solutions. These recommendations relate to either amount or procedure of materials applied. If you have any questions regarding application of certain chemicals or solutions, contact your chemical supplier and follow chemical manufacturer recommendations.**



4010 320th St., Boyden, IA. 51234

Phone: (712) 725-2311

Fax: (712) 725-2380

Toll Free: 1-800-54DEMCO (1-800-543-3626)

**Demco warranty policies, operator manuals, and product registration  
can be found online:**

**[www.demco-products.com](http://www.demco-products.com)**

