

Demco

Tractor Mounted Tank Units



U.S. Patent No. 6,286,870
& 8,839,999



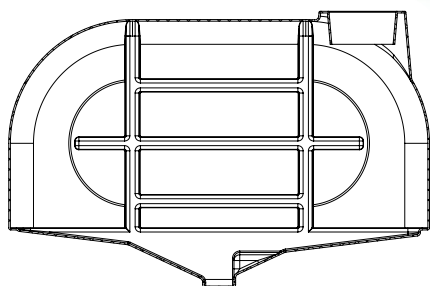
Doing Our Best To Provide You The Best

1200 gallons

Demco SIDEQuest



Shown with
optional steps



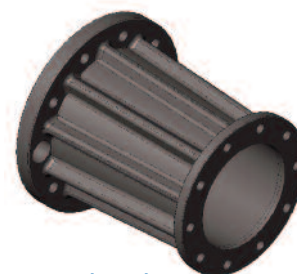
Large centered
drainage sump

Features

- Two 600 gallon polyethylene tanks with 16" fillwells, molded sight gauge, large centered drainage sump and high volume jet agitator.
- Better visibility - Tanks are mounted longitudinal for superb visibility.
- Tank mounting brackets deliver excellent front to rear weight distribution ratio (25% front; 75% rear) and optimal row crop spraying clearance. Extended rear axle spindle mount allows weight to be shifted to the rear, relieving stress on the tractor's front axle and chassis. Units will fit on tractors with or without front duals. Rear duals are required.
- 3 .5" rear spindle diameter with oil bathed tapered bearings located under tank, resulting in exceptional weight distribution
- Transport Width - 16' 11" when wheels/tracks are set on 120" centers.
- Tanks and brackets designed for optimal row crop spraying clearance
- 3 point 80/90° hydraulic front fold boom with leveling linkage and shock absorbers to soften the ride. Live hydraulic control block requires only one set of remote outlets to perform all boom functions.
- Boom can be folded to spray in a 60' or an unfolded 80/90° width.
- Unique hydraulic glide suspension system makes the boom wings weightless. The guide wheels activate the hydraulic system and automatically adjust for uneven terrain. Guide wheels have puncture proof tires. (optional).
- Quick & easy - 3-point rear mount hookup with quick couple plumbing and jack stands for easy installation and removal. Fits category II or III.
- Easy access control panel - makes easy work of preparation, refilling and clean-up.
- 100 gallon rinse tank - thoroughly flushes entire system.
- Front mounted step and work platform. (Optional)



Easy attach tank mounts



10 Bolt Hub



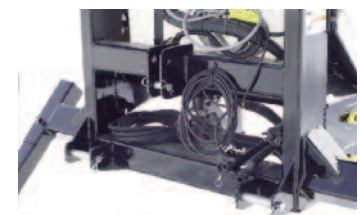
Shown with
optional steps



U.S. Patent No. 6,286,870
& 8,839,999



Easy access
controls



Fit category II or III
3 point hitch

700 & 1000 gallons

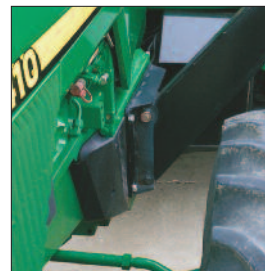


Demco
SIDEQUEST

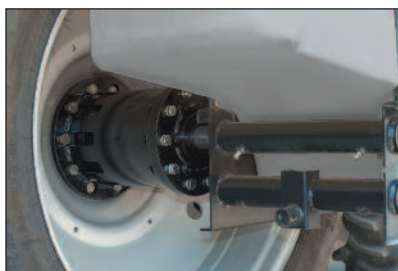


Features

- High capacity side mount tank design - Choose either 700 or 1000 gallon capacity with 16" fillwells. Delivers excellent front to rear weight distribution ratio.
- Better visibility - Tanks are mounted longitudinal for superb visibility.
- Comfortable Transport Width - 16' 4" when wheels/tracks are set on 120" centers.
- Roll-a-way jack stands - for easy installation and removal. (Optional)



Quick Attach
adapter brackets



New 10 Bolt Hub
Side mounts allow
high or low clearance
installation. (On nontrack units)



1200 gallons

Demco SIDEQuest

SideQuest side mount tank units 4WD articulating tractor



Features

- Two 600 gallon high capacity side mount tanks with 16" fillwell.
- Better visibility - tanks are mounted longitudinal for superb visibility.
- 21-23" of ground clearance.
- 17'-2" transport width.

600 gallons

QUICK TACH side mount tank units 4WD articulating tractor



Features

- Two 300 gallon tanks. They feature dual jet agitation, sump, molded sight gauge and 12" fillwell with no-splash cover.
- High clearance brackets include saddles, tank bands, carrier brackets and all necessary bolts for a complete installation.
- 22-25" of ground clearance.
- 15' transport width.

400, 500 & 600 gallons

QUICK TACH side mount tank units for mechanical front wheel drive tractors

Features

- Demco's slim-line polyethylene tanks come in two sizes: 200 or 250 gallon capacities. These tanks feature a dual jet agitator, sump, molded sight gauge and fillwell with a no-splash cover.
- Demco Quick Tach brackets come with saddles, tank bands, carrier brackets and all necessary bolts for complete installation. The undercarriage is bolted to the tractor and can remain on the tractor while the tanks can be removed quickly and easily.
- Transport width: 16' 4"

NOTE: Not applicable on tractors with deep lug front tires or front duals. Fenders need to be removed on most models.

NOTE: Do not exceed the tractor manufacturer's frame load capacity recommendation.



QUICK TACH side mount tank units for standard two wheel drive tractors

Features

- Demco's slim-line polyethylene tanks come in two sizes: 200 or 250 gallon. Tanks feature a dual jet agitator, sump, molded sight gauge and fillwell with a no-splash cover.

NOTE: Exhaust manifold should be shielded from tanks.

- Demco "Quick Tach" brackets come with saddles, tank bands, carrier brackets and all necessary bolts for complete installation. The undercarriage is bolted to the tractor and can remain on the tractor while the tanks can be removed quickly and easily. The heavy duty brackets allow you to carry a total of 400 or 500 gallons.
- Demco's centrifugal plumbing kits feature single section or three section electric control panel. Included are 1 1/4" EPDM suction hose and 3/4" EPDM outlet hose to your implement.
- Transport width: 14'

NOTE: Do not exceed the tractor manufacturer's frame load capacity recommendation.



QUICK TACH inline tank units for mechanical front wheel drive tractors

Features

- The Demco inline tanks are available in two sizes: 200 or 300 gallon capacities. They feature dual jet agitation, sump, molded sight gauge and fillwell with no-splash cover. The 300 gallon tank has a baffle. Linear alignment and rear placement provide better visibility from the tractor seat.
- High Clearance brackets include saddles, tank bands, carrier brackets and all necessary bolts for a complete installation. Bracket placement allows 30" of ground clearance.
- Demco's centrifugal plumbing kits feature single section or three section electric control panel. Included are 1 1/4" EPDM suction hose and 3/4" EPDM outlet hose to your implement.
- Transport width: 16' 6"
- Roll-a-way jack stands provide easy installation and removal. (Optional)



300, 400 & 500 gallons

RMLE series rear mount units

Features

- 300, 400 or 500 gallon tank with jet agitation, molded sight gauge, sump and fillwell with no-splash cover.
- Rear mount brackets are complete with saddles, tank straps and all necessary bolts.
- Category "2" or "3" rear mount brackets may be used with "Quick Attach" three point hook-up.
- Large, convenient platform with safety rail and ladder for easy filling of the tank.
- Retractable built-in ground stand for storage when empty.
- A clean water tank is conveniently mounted on the rear mount unit.
- Available with single section electric control for disc spray kits or three section electric controls for boom spraying.
- Available with 45', 50' or 60' hydraulic or manual fold booms



150 & 200 gallons

RM series rear mount units

Features

- 150 or 200 gallon tank with jet agitation, molded sight gauge, sump, fillwell with no-splash cover.
- Rear mount brackets are complete with saddles, tank bands and all necessary bolts.
- Rear mount brackets will fit category "1" and "2".
- Unit may be used with a "Quick Attach" three point hook-up.
- Non-retractable built-in ground stand for storage when empty.
- Hypro® 8 roller PTO pump (C7560D) will deliver 22 GPM at 1000 RPM, 12 GPM at 540 RPM and 300 PSI max.
- 21', 28', 30' and 40' Truss-T booms feature vertical and horizontal boom breakaway with 20" nozzle spacing.
- Handgun with 25' of hose (optional)



600 gallons

RM Series rear mount tank units



Features

- 600 gallon tank with 16 inch fillwell, jet agitation, molded sight gauge, and large centered drainage sump.
- Category “3” or “4” rear mount brackets may be used with “Quick Attach” three point hookup.
- Large, convenient platform with safety rail and ladder for easy filling of the tank.
- Retractable, built-in ground stand for storage when empty.
- A clean water tank is conveniently mounted on the rear mount unit.
- Transport width 45', 60' & 66' boom - 9' 6" wide
- Transport width 80/90' boom - 12' wide

Demco

P.O. Box 189 • Boyden, Iowa 51234
Phone: 1-800-543-3626 • Fax: 1-800-845-6420
View all Demco Products on the web at: www.demco-products.com

DOING OUR BEST TO PROVIDE YOU THE BEST