

Landscaping Equipment

Farm King

For tractors 12 hp to 225 hp

Mowers | Cutters | Tillers | Compact Implements | Snowblowers | Rear Blades





FARM KING PRODUCT LINE-UP

Farm King Product Categories

Grain Handling

Application Equipment

Hay Tools

Landscaping Equipment

Allied by Farm King - Commercial
Products

www.farm-king.com

Farm King has been building equipment for the agriculture industry for more than 70 years. Known for dependability and value, Farm King manufactures a wide array of landscaping equipment for tractors starting at 12 hp, all of which are quick hitch compatible.

Farm King landscaping equipment has undergone years of testing and refinement and is built to be rugged and long lasting.

Table of Contents

Finishing Mower 4-7

Rotary Cutter 8-9

Rotary Tiller 10-11

Box Scraper 12

Landscape Rake 13

Drag Harrow 14

Disc 15

Cultivator 16

Post-Hole Digger 17

Post Driver 18-19

Snowblower 20-23

Rear Blade 24-26

Quick Hitch 27





FINISHING MOWER

Models 430, 530, 630

PRODUCT OVERVIEW

- › Built for lawns and acreages
- › Category I
- › 12 to 30 hp required

FEATURES

- › Independent axle beams
- › Quick hitch compatible
- › Steel tube front roller

OPTIONS

- › UHMW poly roller prevents scalping
- › Solid rubber tires
- › Chain kit

AVAILABLE COLORS



*Red is the standard color.

The Farm King Home-Owner Finishing Mower Series was designed as an economical choice for use on large acreage homesteads.

These finishing mowers are quick hitch compatible and are available in widths ranging from 48" to 72" for tractors from 12 to 30 hp.

Farm King has been building top quality finishing mowers for 15 years and has refined these mowers to be among the best in the industry. Independent axle beams allow for quick replacement of parts while the optional solid rubber tires can easily withstand frequent heavy use. An optional chain kit minimizes the possibility of flying debris.



Model 430 - 4' (1.2 m) cutting width, 3-point hitch Category I
For tractors 12 - 25 hp

Model 530 - 5' (1.5 m) cutting width, 3-point hitch Category I
For tractors 15 - 30 hp

Model 630 - 6' (1.8 m) cutting width, 3-point hitch Category I
For tractors 20 - 30 hp



[1] Independent axle beams. **[2]** Pneumatic tires with puncture proof sealant are standard; solid rubber tires can be equipped as an option. **[3]** All models are quick hitch compatible.



SPECIFICATIONS

	MODEL >>	430	530	630
Standard Equipment	Cutting width	48"	60"	72"
	Cutting height	1-1/2" to 4-1/2"	1-1/2" to 4-1/2"	1-1/2" to 4-1/2"
	Blade tip speed	15,485 ft/min	15,829 ft/min	18,737 ft/min
	Blades	3	3	3
	Blade material	1/4" x 2-1/4"	1/4" x 2-1/4"	1/4" x 2-1/4"
Optional Equipment	Blade length	17-3/4"	21-3/4"	25-3/4"
	Blade overlap	1-5/8"	2-5/8"	2-5/8"
	Blade drive	2 belt B groove	2 belt B groove	2 belt B groove
	Deck material	10 gauge	7 gauge	7 gauge
	Gearbox	Closed (540 RPM)	Closed (540 RPM)	Closed (540 RPM)
	Gearbox ratio	1 : 1.93	1 : 1.93	1 : 1.93
	Tractor requirement	12 - 25 hp	15 - 30 hp	20 - 30 hp
	3-point hitch	Category I	Category I	Category I
	Tires	4.10 / 3.50 - 4	4.10 / 3.50 - 4	4.10 / 3.50 - 4
	Spindles	Cast iron, sealed	Cast iron, sealed	Cast iron, sealed
	Front roller	4" x 5-3/8"	4" x 5-3/8"	4" x 5-3/8"
	Weight, approx.	440 lb	552 lb	618 lb



FINISHING MOWER

Models 555, 655, 755

PRODUCT OVERVIEW

- › Built for mowing parks, lawns and sports fields
- › Category I
- › 15 to 55 hp required

FEATURES

- › Spring-loaded, self-tensioning belt adjustment
- › Single B-section Kevlar V-belt
- › Independent axle beams
- › Quick hitch compatible

OPTIONS

- › Solid rubber tires
- › Rear safety chain

AVAILABLE COLORS



*Red is the standard color.

The Farm King HD Finishing Mower Series was designed to handle the toughest jobs and is capable of providing a clean, groomed finish on rough, uneven terrain.

Manufactured with top quality material, the mower deck features solid reinforcing plates which are found beneath the deck at all spindle and axle mounting locations. Additionally the hard-surfaced blades and heavy-duty spindles prepare the Farm King Finishing Mower for any job.

These finishing mowers are Quick Hitch compatible and are available in widths ranging from 60" to 84".



Model 555 - 5' (1.5 m) cutting width, 3-point hitch Category I
For tractors 15 - 55 hp

Model 655 - 6' (1.8 m) cutting width, 3-point hitch Category I
For tractors 20 - 55 hp

Model 755 - 7' (2.1 m) cutting width, 3-point hitch Category I
For tractors 25 - 55 hp



[1] Independent axle beams. **[2]** An optional chain kit minimizes the possibility of flying debris. **[3]** A long-wearing, single B-section Kevlar belt with spring-loaded idler. **[4]** Steel gearbox cover.



SPECIFICATIONS

Standard Equipment

- UHMW poly roller
- Hard surfaced blades
- Heavy-duty spindles
- 13 / 500 x 6 4-ply pneumatic tires

Optional Equipment

- PTO shaft, heavy-duty
- Solid rubber tires
- Chain kit

MODEL >>	555	655	755
Cutting width	60"	72"	84"
Cutting height	1-1/2" to 5-1/2"	1-1/2" to 5-1/2"	1-1/2" to 5-1/2"
Blade tip speed	15,829 ft/min	18,737 ft/min	18,552 ft/min
Blades	3	3	3
Blade material	1/4" x 2-1/4" Hard surfacing	1/4" x 2-1/4" Hard surfacing	1/4" x 2-1/4" Hard surfacing
Blade length	21-3/4"	25-3/4"	29-3/4"
Blade overlap	2-5/8"	2-5/8"	2-5/8"
Blade drive	Single Kevlar	Single Kevlar	Single Kevlar
Deck material	7 gauge	7 gauge	7 gauge
Gearbox	Closed (540 RPM)	Closed (540 RPM)	Closed (540 RPM)
Gearbox ratio	1 : 1.93	1 : 1.93	1 : 1.93
Tractor requirement	15 - 55 hp	20 - 55 hp	25 - 55 hp
3-point hitch	Category I	Category I	Category I
Tires	13 / 500 x 6 4-ply	13 / 500 x 6 4-ply	13 / 500 x 6 4-ply
Spindles	Cast iron, sealed	Cast iron, sealed	Cast iron, sealed
Front roller	4" x 6-15/16"	4" x 6-15/16"	4" x 6-15/16"
Weight, approx.	552 lb	618 lb	724 lb



ROTARY CUTTER

Series I and II

PRODUCT OVERVIEW

- › Built to clear rough areas where stones, tree stumps and debris are hidden by weeds
- › Category I & II
- › 20 to 75 hp required

FEATURES

- › The stump-jumper is standard on Series II
- › 15" laminated 3-point or 16" solid rubber tire

OPTIONS

- › Chain Kit
- › Trailer kit with hydraulic lift

AVAILABLE COLORS



*Red is the standard color.

Farm King Rotary Cutters are made to clear those rough areas where stones, tree stumps and debris are hidden by weeds.

These rotary cutters, available in two series, easily clear heavy weeds and thick rough and require minimal maintenance. Series I, with a 3-point hitch, is available in 48" or 60" widths. Series II is available in widths of 60", 72" and 84". Two available options include a trailer kit with hydraulic lift or a 3-point hitch.

A 24" stump-jumper is mounted above the blades to the gearbox. Standard on Series II, the stump-jumper allows the blade assembly to glide over uneven terrain.



SERIES I

Model 410 - 48" (1.2 m) cutting width, 3-pt hitch Cat. I
For tractors 20 - 45 hp

Model 510 - 60" (1.5 m) cutting width, 3-pt hitch Cat. I
For tractors 25 - 55 hp

SERIES II

Model 510 - 60" (1.5 m) cutting width, 3-pt hitch Cat. I
For tractors 25 - 65 hp

Model 620 - 72" (1.8 m) cutting width, 3-pt hitch Cat. II
For tractors 35 - 65 hp

Model 720 - 84" (2.1 m) cutting width, 3-pt hitch Cat. II
For tractors 45 - 75 hp

[1] An optional chain kit minimizes the possibility of flying debris. **[2]** 3-point hitch models include a single solid rubber or laminated trailing wheel. **[3]** The stump-jumper helps to minimize stress on the deck and gearbox.



SPECIFICATIONS		SERIES >>	I	I	II	II	II
		MODEL >>	410	510	510	620	720
Optional Equipment - Chain Kit - Parking Jack (series II)	Cutting width		48"	60"	60"	72"	84"
	Cutting height		Minimum 3"	Minimum 4"	Minimum 4"	Minimum 4"	Minimum 4"
	Blade tip speed		13,098 ft/min	12,721 ft/min	12,721 ft/min	14,758 ft/min	14,283 ft/min
	Spring steel blades		1/2" x 3" heat treated	1/2" x 3" heat treated	1/2" x 3" heat treated	1/2" x 3" heat treated	1/2" x 3" heat treated
	Deck material		11 gauge	11 gauge	10 gauge	10 gauge	10 gauge
	Gearbox		Closed (540 RPM)	Closed (540 RPM)	Closed (540 RPM)	Closed (540 RPM)	Closed (540 RPM)
	Gearbox rating		30 hp	40 hp	40 hp	60 hp	65 hp
	Tractor requirement		20 - 45 hp	25 - 55 hp	25 - 65 hp	35 - 65 hp	45 - 75 hp
	PTO shaft		Shear pin	Shear pin	Shear pin	Slip clutch	Slip clutch
	3-point hitch*		Category I	Category I	Category I	Category II	Category II
	Tire - 3-point		15" laminated	15" laminated	16" solid rubber	16" solid rubber	20" solid rubber
	Tire / wheels - trailing		N/A	N/A	Solid rubber or 15" rim	Solid rubber or 15" rim	15" rim
	Stump-jumper		N/A	N/A	24" diameter	24" diameter	24" diameter
	Parking jack		N/A	N/A	Optional	Optional	Optional
	Chain kit		Optional	Optional	Optional	Optional	Optional
	Weight - 3-point		450 lb	520 lb	601 lb	777 lb	989 lb
	Weight - trailing		N/A	N/A	686 lb	856 lb	1080 lb



ROTARY TILLER

Series 25, 45 and 65

PRODUCT OVERVIEW

- › Built for landscaping gardens, orchards, nurseries, hobby farms and homesteads
- › Category I, opt. fit Category II
- › 12 - 65 hp required

FEATURES

- › Slip clutch
- › Automatic chain tightener enhances longevity

OPTIONS

- › 4 tines per flange on 65 Series (6 standard)

AVAILABLE COLORS*



*Red is the standard color.

Farm King has a collection of rotary tiller models to suit your garden and landscaping needs. The tiller attaches to the three-point hitch and is designed to fit a variety of tractors, from 12 hp to 65 hp. Tilling widths range from 36" to 54" in the 25 Series and from 55" to 69" in the 45 Series. The 65 Series is available in 68" and 77" widths.

Getting close to fences, hedges or covering a tire track is easy with the sideshift feature. The entire unit can be pushed to one side while the PTO shaft remains in line with the tractor to minimize stress on the universal joint.

SERIES 25

Model 2540 - 36" (0.9 m) tillage width, 3-point hitch Category I
For tractors 20 - 45 hp

Model 2548 - 45" (1.1 m) tillage width, 3-point hitch Category I
For tractors 25 - 55 hp

Model 2560 - 54" (1.4 m) tillage width, 3-point hitch Category I
For tractors 25 - 55 hp

SERIES 45

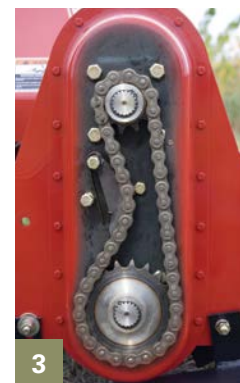
Model 4560 - 55" (1.4 m) tillage width, 3-point hitch Category I
For tractors 25 - 65 hp

Model 4572 - 69" (1.8 m) tillage width, 3-point hitch Category I
For tractors 35 - 65 hp

SERIES 65

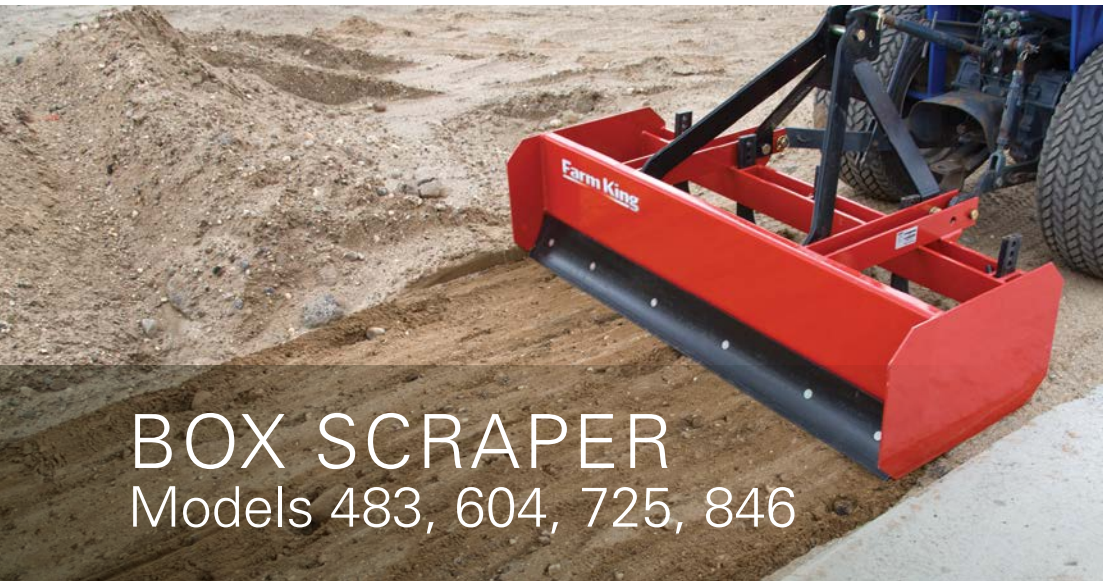
Model 6572 - 68" (1.7 m) tillage width, 3-point hitch Category I / II For
tractors 25 - 65 hp

Model 6582 - 77" (2.0 m) tillage width, 3-point hitch Category I / II
For tractors 35 - 65 hp



[1] The sideshift feature is available on most Farm King Rotary Tillers. **[2]** Flanges on all series are available with four tines. Six tines per flange are standard on the 65 Series. **[3]** Housed in a sealed oil bath, the chain tightener assembly is resistant to heat, dust, debris and moisture, which reduces maintenance and enhances the longevity of the chain and sprockets.

SPECIFICATIONS		SERIES >>	25	25	25	45	45	65	65
		MODEL >>	2540	2548	2560	4560	4572	6572	6582
Standard Equipment - Slip Clutch - Parking Jack - Skid Shoes	Tillage width		36"	45"	54"	55"	69"	68"	77"
	Overall width		46-1/2"	54-1/2"	66-1/2"	66"	78"	78"	88"
	Tractor requirement		12 - 18 hp	14 - 22 hp	18 - 25 hp	25 - 40 hp	30 - 45 hp	45 - 55 hp	55 - 65 hp
	3-point hitch		Category I	Category I	Category I	Category I	Category I	Category I, opt. fit Category II	Category I, opt. fit Category II
	Gearbox		Heavy-duty oil bath (540 RPM)	Heavy-duty oil bath (540 RPM)	Heavy-duty oil bath (540 RPM)	Heavy-duty oil bath (540 RPM)	Heavy-duty oil bath (540 RPM)	Heavy-duty oil bath (540 RPM)	Heavy-duty oil bath (540 RPM)
	Chain in oil bath		#60H	#60H	#60H	#80H	#80H	#100H	#100H
	Rotor speed RPM		196 RPM or 880 ft/min	196 RPM or 880 ft/min	196 RPM or 880 ft/min	203 RPM or 865 ft/min	203 RPM or 865 ft/min	196 RPM or 880 ft/min	196 RPM or 880 ft/min
	Sideshift		2-1/2"	4-1/2"	7-1/2"	6-3/4"	8-1/2"	15"	n/a
	PTO shaft		Slip clutch, shear bolt optional	Slip clutch, shear bolt optional	Slip clutch, shear bolt optional	Slip clutch	Slip clutch	Slip clutch	Slip clutch
	Tine size		1/4" x 2-1/4"	1/4" x 2-1/4"	1/4" x 2-1/4"	1/4" x 2-1/4"	1/4" x 2-1/4"	5/16" x 3-1/4"	5/16" x 3-1/4"
	No. of tines/No. of flange		16/4	20/5	24/6	24/6	32/8	42/7 (opt. 28/4)	48/8 (opt. 32/4)
	No. of tines per flange		4	4	4	4	4	6 (opt. 4)	6 (opt. 4)
	Skid shoes		Standard	Standard	Standard	Standard	Standard	Standard	Standard
	Weight		425 lb	458 lb	517 lb	613 lb	688 lb	906 lb	968 lb



PRODUCT OVERVIEW

- › Built for landscaping, snow removal, construction
- › Category I
- › 20 - 65 hp required

FEATURES

- › Two 1/2" x 6" replaceable blades
- › Heat treated scarifier shanks

AVAILABLE COLORS*



*Red is the standard color.

Two 1/2" x 6" replaceable, back to back blades make this bi-directional scraper extremely versatile. The scarifier shanks are heat treated and are easily adjusted for depth. The Farm King Box Scraper features a replaceable / reversible back to back cutting edge as well as replaceable / reversible scarifier shanks for forward and reverse use.

[1] The 1/2" x 6" cutting edges on the Farm King Box Scraper are reversible and replaceable.

[2] 4-position scarifier shanks provides a variety of digging depths of up to 4".

- › Heavy-duty 1/4" thick side and back plates make up each model design.
- › Capacities that range from 6 to 12 cu. ft.

Model 483 - 4' (1.2 m) width
For tractors 20 - 40 hp, cat. I

Model 604 - 5' (1.5 m) width
For tractors 20 - 45 hp

Model 725 - 6' (1.8 m) width
For tractors 25 - 55 hp

Model 846 - 7' (2.1 m) width
For tractors 30 - 65 hp

SPECIFICATIONS

MODEL >>	483	604	725	846
Width	48"	60"	72"	84"
Capacity (approximate)	6 cu. ft.	8 cu. ft.	10 cu. ft.	12 cu. ft.
Max. working depth	4"	4"	4"	4"
Reversible cutting edge	1/2" x 6" replaceable	1/2" x 6" replaceable	1/2" x 6" replaceable	1/2" x 6" replaceable
No. of cutting edges	2	2	2	2
Reversible shanks	3/4" x 2-3/8" replaceable	3/4" x 2-3/8" replaceable	3/4" x 2-3/8" replaceable	3/4" x 2-3/8" replaceable
No. of shanks	3	4	5	6
Shank tip width	1-1/2"	1"	1"	1"
3-point hitch	Category I	Category I	Category I	Category I
Tractor requirements	20 - 40 hp	20 - 45 hp	25 - 55 hp	30 - 65 hp
Weight	320 lb	378 lb	428 lb	469 lb



LANDSCAPING RAKE

Models 60, 72, 84, 96



PRODUCT OVERVIEW

- › Built to spread and level soil, gravel, beaches and seed beds
- › Category I
- › 20 - 65 hp required

FEATURES

- › 5/16" x 1" spring-steel tines
- › Reversible for push or pull applications

OPTIONS

- › Optional gauge wheels

AVAILABLE COLORS*



*Red is the standard color.

The Farm King Landscape Rake is ideal for seedbed preparation and trash removal from long grass, dirt and gravel. Five-positions of angle adjustment allows the operator to evenly distribute crushed rock or clumped soil. 5', 6', 7' and 8' models are available with quick hitch compatibility. Tines are evenly spaced 1" apart.

Use to clear off unwanted material. Ideal for spreading and leveling crushed stone and other landscaping materials and can be used to maintain beaches and recreational areas.

[1] Optional gauge wheels provide added stability and depth control.

[2] 1-inch wide, spring-steel tines clear off unwanted material and prepare an ideal seedbed ready to accept small seeds or sod.

SPECIFICATIONS

MODEL >>	60	72	84	96
Width	60"	72"	84"	96"
Tines	5/16" x 1" spring-steel	5/16" x 1" spring-steel	5/16" x 1" spring-steel	5/16" x 1" spring-steel
Gauge wheels	Optional	Optional	Optional	Optional
Wheel material	Solid rubber tire	Solid rubber tire	Solid rubber tire	Solid rubber tire
Angle adjustment, forward	3-position	3-position	3-position	3-position
Angle adjustment, reverse	2-position	2-position	2-position	2-position
Angle increments	20°	20°	20°	20°
3-point hitch	Category I	Category I	Category I	Category I
Parking stand	Standard	Standard	Standard	Standard
Tractor requirements	20 - 40 hp	20 - 45 hp	25 - 55 hp	30 - 65 hp
Weight	134 lb	187 lb	199 lb	331 lb

Model 60 - 5' (1.5 m) width
For tractors 20 - 40 hp, cat. I

Model 72 - 6' (1.8 m) width
For tractors 20 - 45 hp

Model 84 - 7' (2.1 m) width
For tractors 25 - 55 hp

Model 96 - 8' (2.4 m) width
For tractors 25 - 55 hp



PRODUCT OVERVIEW

- › Ideal for freshening horse paddocks and pastures
- › Category I
- › 18 - 65 hp required

FEATURES

- › Accepts any combination of 40" and 60" harrow sections
- › Maximum ground coverage of 10'
- › Heavy-duty chains provide an even pull

AVAILABLE COLORS*



*Red is the standard color.

Two available sizes of harrow in 40" and 60" make any large job feel small. This harrow is great for leveling driveways, gravel parking lots, weeding out tilled soil and removing embedded trash from gravel and soils. The stirring motion of the harrow prepares a top quality seed bed for grass, saplings and other various foliage. Reinforced adjustable chain clamps make the harrow easy to adjust for desired soil penetration and better ground clearance during transportation.

- › Heavy-duty chains provide an even pull and can be adjusted for height.
- › 80" and 100" bars accept any combination of 40" and 60" harrow sections.

[1] The rigid construction allows for the filling of potholes while the floating assembly follows the contour of the ground. **[2]** The chain height can be adjusted to the desired depth.

Model 80 - 80" (2.0 m) width
For tractors 18 - 50 hp

Model 1002 - 100" (2.5 m) width
For tractors 20 - 65 hp

Model 1003 - 120" (3.0 m) width
For tractors 20 - 65 hp

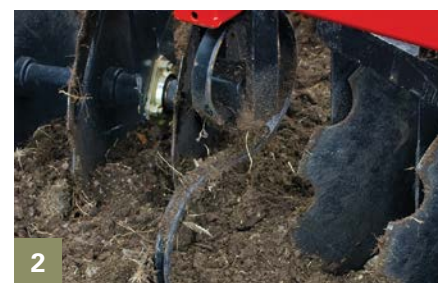
SPECIFICATIONS

MODEL >>	80	1002	1003
Width	80"	100"	120"
Frame tubing	4" x 4"	4" x 4"	4" x 4"
Harrows	2 - 40"	40" and 60"	3 - 40"
Teeth	5/8"	5/8"	5/8"
Chain height	Adjustable	Adjustable	Adjustable
3-point hitch	Category I	Category I	Category I
Tractor requirements	18 - 50 hp	20 - 65 hp	20 - 65 hp
Weight	308 lb	361 lb	413 lb



DISC

Models 505, 605, 705, 805



PRODUCT OVERVIEW

- › Built for landscaping, nurseries and homesteads
- › Category I
- › 20 - 65 hp required

FEATURES

- › 2" x 3" x 1/4" wall tubing

OPTIONS

- › Scraper Kit
- › Center Sweep

AVAILABLE COLORS*



*Red is the standard color.

Farm Kings discs are heavily constructed to provide long lasting equipment for multiple applications. Specializing in seedbed preparation, the Farm King disc penetrates the crusty, hard packed soil and rejuvenates it for easy seed application. Hardened steel discs help churn the soil to reveal a nutrient rich layer and deeper rich soil texture. Notched and smooth blades are available in any combination. Each Farm King disc is Quick hitch compatible.

» Each gang can be positioned at five different angles

[1] The optional scraper kit keeps discs free of clinging soil. **[2]** The optional center sweep prevents the buildup of material between the gangs.

Model 505 - 66" (1.7 m) width
For tractors 20 - 40 hp, cat. I

Model 605 - 78" (2.0 m) width
For tractors 20 - 45 hp

Model 705 - 90" (2.3 m) width
For tractors 25 - 55 hp

Model 805 - 102" (2.6 m) width
For tractors 25 - 55 hp

SPECIFICATIONS

MODEL >>	505	605	705	805
Width	5-1/2'	6-1/2'	7-1/2'	8-1/2'
Frame	2" x 3" x 1/4" wall tube	2" x 3" x 1/4" wall tube	2" x 3" x 1/4" wall tube	2" x 3" x 1/4" wall tube
Discs	16	20	24	28
Disc diameter	18"	18"	20"	20"
Disc spacing	7-1/2"	7-1/2"	7-1/2"	7-1/2"
Scraper kit	Optional	Optional	Optional	Optional
Center sweep	Optional	Optional	Optional	Optional
3-point hitch	Category I	Category I	Category I	Category I
Tractor requirements	20 - 40 hp	25 - 50 hp	30 - 60 hp	30 - 65 hp
Weight	649 lb	732 lb	899 lb	1084 lb



CULTIVATOR

Models 609, 7211, 8413



PRODUCT OVERVIEW

- › Built for nurseries, seedbed preparation and soil aeration
- › Category I
- › 15 - 40 hp required

FEATURES

- › 2" x 2" x .250" wall tubing

OPTIONS

- › Optional gauge wheels and 7" sweeps

AVAILABLE COLORS*



*Red is the standard color.

Superior soil penetration is what you will get every pass with the Farm King cultivator. This cultivator is design to give the operator optimal depth control and even soil distribution. Heavy-duty gauge wheels and a rigid design allow the cultivator to remain stable when digging deep into the soil. The shanks are easily adjustable with the help of a single bolt space adjustment clamp. Proper shank spacing allows for uniform soil distribution and minimal nutrient loss.

- › Features single bolt spacing adjustment.
- › Tine point are reversible and replaceable.
- › Category I 3-point hitch; all models are Quick Hitch compatible.

[1] Attached to solid 2" x 2" frame are forged steel S tines. The tine tips are outfitted with hardened steel reversible points. **[2]** All models are quick hitch compatible.

Model 609 - 60" (1.5 m) width For tractors 15 - 30 hp
Model 7211 - 72" (1.8 m) width For tractors 20 - 35 hp
Model 8413 - 84" (2.1 m) width For tractors 20 - 40 hp

SPECIFICATIONS			
MODEL >>	609	7211	8413
Width	60"	72"	84"
Frame	2" x 2" x .250 wall tubing	2" x 2" x .250 wall tubing	2" x 2" x .250 wall tubing
Tines	Forged steel w/reversible points	Forged steel w/reversible points	Forged steel w/reversible points
Number of "S" tines	9	11	13
Gauge wheels	Optional	Optional	Optional
7" sweeps	Optional	Optional	Optional
3-point hitch	Category I	Category I	Category I
Tractor requirements	15 - 30 hp	20 - 35 hp	20 - 40 hp
Weight	190 lb	215 lb	243 lb



POST-HOLE DIGGER

Models 150, 160, 205, 210



PRODUCT OVERVIEW

- › Shear-bolt protected and shielded PTO driveline
- › Category 0, I, II
- › 14 hp and greater required

FEATURES

- › 3-position boom adjustment on models 150, 160, 205
- › Heavy-duty tubular steel stock on the yoke and booms of all PTO-driven units

OPTIONS

- › Optional down force kit for 350-500 lb extra pressure when digging conditions get tough

The Farm King post hole digger uses an impressive one or two flighting design to dig deep into the hardest compact soil in any region. Each model also comes with a five year limited warranty on most gearbox components.

The auger and PTO assembly are held together using heavy-duty tubular steel stock that allows the post hole digger to remain stable under the most grueling conditions. Simply attach the post-hole digger to any three point hitch assembly or skid steer mount, hook up hydraulic lines and the digger is ready for use.

[1] Choose from 6" to 30", single and double flighted augers with optional 12" auger extensions (with guards) and special fishtail auger center points.

Model 150 - 3 boom positions
Category 0

Model 160 - 3 boom positions
Category I / II

Model 205 - 3 boom positions
Category I / II

Model 210 - 1 boom positions
Category I / II

SPECIFICATIONS

MODEL >>	150	160	205	210
Main frame (O.D. size of steel tubing)	-	3"	3-1/2"	3-1/2"
Gear ratio	3:1	3:1	3.18:1	4.1:1
Boom positions	3	3	3	1
Hitch size	Cat. 0	Cat. I/II	Cat. I/II	Cat. I/II
Down force kit	Optional	Optional	Optional	Optional
Output shaft	2"	2"	2"	2"
Weight	149 lb	160 lb	206 lb	210 lb



PRODUCT OVERVIEW

- › Built for fast, easy fence post installation
- › Category I and II
- › 100,000 lb at full impact

FEATURES

- › Self-contained hydraulic system
- › Full hydraulic controls
- › Welded, tubular steel construction

OPTIONS

- › Post guide
- › Hydraulic extendable hitch (model 2400)

The Farm King 3-Point post driver works with your tractor or skid-steer for efficient effortless post driving. Built to be fast, powerful, durable, and maneuverable, Farm King 3-Point post drivers are ideal for use on the jobsite or on the farm.

Farm King 2400 trailered post drivers makes work easy. Available in a PTO or 9 hp engine models, Farm King post driver trailers can work with a tractor or behind a pick-up truck. Designed to be maneuverable and durable Farm King post drivers are perfect for farmers, ranchers, and contractors.

- › A large 9" x 14" hammer face is wider for easier lining up and deeper for pounding on the opposite side of the wire. This eliminates the need to drive around existing fence line.

Model 1450 - 3-Point Hitch and Skid Steer

STANDARD EQUIPMENT

- Category I and II 3-point hitch
- Optional skid steer Quick-Tach mount frame
- Integral stand
- PTO driven hydraulic pump
- Self-contained hydraulic system
- Full hydraulic controls

3-PT BASE

- 6" x 8" base pads, wide stance for stability
- Welded, tubular steel construction
- Category II bushings included

SKID STEER

Skid Steer Quick-Tach Mount Frame*

- 45" wide, 235 lb (107 kg)
- Includes hydraulic drive motor with couplers

*skid steer must be equipped with Quick-Tach carrier

OPTIONAL EQUIPMENT

- Post guide

Model 2400 - Engine and PTO Drive

STANDARD EQUIPMENT

- PTO or engine driven hydraulic pump
- Self-contained hydraulic system
- Full hydraulic controls
- Large hammer face
- Hammer ballast box with lid
- Welded frame, axle and counter weight box reduces set up time
- Rear stand to prevent backward flip over

OPTIONAL EQUIPMENT

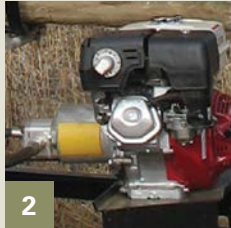
- Mast extension
- Hydraulic extendable hitch
- 2" ball hitch receiver

Hammer Mast - A 12" wide welded track provides for smooth guided hammer operation. No internal pads or shims to adjust or maintain. A 62" cylinder stroke, combined with a 1-5/8" diameter cylinder bore, ensures a fast acting downward force.



▲ Fingertip hydraulic controls are standard and allows for smooth 4-way tilt, in/out slide and hammer up/down.

Self-contained hydraulics eliminates possible oil contamination between power unit and post driver. All models are equipped with oversized hydraulic pumps which allows full operation at reduced rpm. ▼



Model 2400 - Engine and PTO Drive

[1] A sturdy in / out slide mechanism that allows 0–16" of movement for ease of adjustment to fence line. A heavy-duty cross axle tube reinforces both wheel legs and undercarriage. A large in frame weight box allows required ballasting of the post driver for stable operation.

[2] The Engine driven model is equipped with a 9 hp gasoline engine and utilizes a direct mounted hydraulic pump which eliminates the need for belts or pulleys.



SPECIFICATIONS

MODEL >>	1450 - 3-Point Hitch and Skid Steer	MODEL >>	2400 - Engine or PTO Drive
Frame	All welded tubular steel construction	Frame	All welded tubular steel construction
Assembly	Cat. I or II 3-pt hitch or opt. skid steer mount	In frame counterweight box	15" x 15" x 25" – 3.2 cu. ft. (92L)
Mast	12" (305 mm) wide track	Wheel track width	69" (1750 mm)
Hammer weight	310 lb (141 kg)	Wheel rims	15" (381 mm) (6.70 x 15 4-ply bias tires optional)
Impact at full stroke	100,000 lb (45,360 kg)	Wheel bearings	Tapered roller
Hydraulic requirements	6-8 gpm @ 300-500 rpm (22.7-30.3 lpm @ 300-500 rpm)	Mast	12" (305 mm) wide track
Maximum hammer height	Standard lift 105" (2.67 m)	Hammer weight	310 lb (141 kg) empty, up to 700 lb (318 kg) ballasted
Minimum hammer height	43" (1090 mm)	Impact at full stroke	100,000 lb (45,360 kg)*
Maximum hammer stroke	62" (1570 mm)	Maximum hammer height	Standard lift 105" (2.67 m), 128" (3.25 m) with optional mast extension
Leveling adjustment	2" x 8" cylinder on mast (1) 2" x 8" cylinder on hammer pivot (1)	Minimum hammer height	43" (1090 mm), 66" (1676 mm) with optional mast extension
Angle of tilt, from vertical	Front / Back: Fore 15° / Aft 35° Side tilt: Left 22° / Right 22°	Maximum hammer stroke	62" (1570 mm)
Hydraulic pump	12 gpm @ rated speed	In & out hammer slide	16" (410 mm)
Basic shipping weight	1135 lb (515 kg)	Hammer tilt, from vertical	Fore 20° / Aft 15°, Side Tilt: Left 40° / Right 22°
		Basic shipping weight	PTO: 1190 lb (540 kg), Engine: 1300 lb (590 kg)
			*Impact lb are based on an 8" diameter post driven into packed clay soil with non ballasted hammer. Impact increases proportionally with ballast in hammer.



SNOWBLOWER

Compact Models 500, 600, 740, 840

PRODUCT OVERVIEW

- › Rear attach for use on acreages, farms and municipalities
- › Category I, II, IIIN
- › 15 - 90 hp

FEATURES

- › Spout rotator and deflector available as manual or hydraulic
- › Standard shear bolts on all PTOs

OPTIONS

- › Electric spout rotator

AVAILABLE COLORS*



*Red is the standard color.

Farm King has been building reliable snowblowers for more than three decades. Through the years the design has been refined to create an excellent snowblower that is easy to use and maintain. PTO-driven Farm King compact snowblowers attach to 3-point hitch and are available in widths ranging from 50" to 84".

The Farm King snowblower features a hand crank spout rotator on models 500 and 600. A hydraulic cylinder is used to control the spout rotation models 740 and 840.



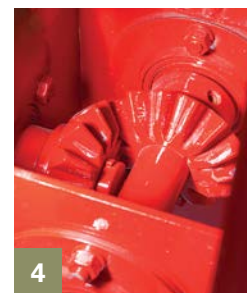
Model 500 - 50" (1.3 m) cutting width
For tractors 15 - 30 hp, 3-point hitch Category I

Model 600 - 60" (1.5 m) cutting width
For tractors 20 - 40 hp, 3-point hitch Category I

Model 740 - 74" (1.9 m) cutting width
For tractors 40 - 70 hp, 3-point hitch Category I / II

Model 840 - 84" (2.1 m) cutting width
For tractors 60 - 90 hp, 3-point hitch Category I / II / IIIN

[1] A hand crank spout rotator is standard on models 500 and 600 while a hydraulic setup is standard on models 740 and 840 **[2]** Adjustable and replaceable skid shoes are standard equipment **[3]** The chain drive is easily accessible for routine maintenance **[4]** The open gear setup is easy to maintain and service.



SPECIFICATIONS

MODEL >>	500	600	66"	740	840	840G
Cutting width	50"	60"	66"	74"	84"	84"
Cutting height	25"	25"	25"	30"	30"	30"
Replaceable cutting edge	N/A	N/A	N/A	N/A	N/A	N/A
Fan	4-blade	4-blade	4-blade	4-blade	4-blade	4-blade
Fan dimensions	20" x 7"	22-1/2" x 7"	22"	23-1/4" x 7"	23-1/4" x 7"	23-1/4" x 7"
Replaceable fan housing	N/A	N/A	N/A	N/A	N/A	N/A
Drive fan	540 RPM open gear	540 RPM open gear	540 RPM open gear	540 RPM open gear	540 RPM open gear	540 RPM oil bath gearbox
Auger diameter	13"	15"	15"	15"	15"	15"
Auger drive	#50 chain	#50 chain	#50 chain	#50 chain	#50 chain	#50 chain
Spout rotator - manual (hand crank) - hydraulic cylinder	Standard Optional	Standard Optional	Standard Optional	N/A Standard	N/A Standard	N/A Standard
Spout deflector - manual (6 position) - hydraulic cylinder	Standard Optional	Standard Optional	Standard Optional	Standard Optional	Standard Optional	Standard Optional
Skid shoes	Adjustable and replaceable	Adjustable and replaceable	Adjustable and replaceable	Adjustable and replaceable	Adjustable and replaceable	Adjustable and replaceable
Hitch category	Cat. I standard Cat. I Q.H standard	Cat. I standard Cat. I Q.H standard	Cat. I standard Cat. I Q.H standard	Cat. I standard Cat. II bushings	Cat. I & II std Cat. II Q.H. std Cat. III Q.H. narrow	Cat. I & II std Cat. II Q.H. std Cat. III Q.H. narrow
Hitch adjustment	4 position	4 position	4 position	2 position	2 position	2 position
Tractor requirement	15 - 30 hp	20 - 40 hp	22 - 40 hp	40 - 70 hp	60 - 90 hp	60 - 90 hp
Weight	422 lb	470 lb	515 lb	756 lb	848 lb	878 lb



SNOWBLOWER

Models 960, 1080, 1200

PRODUCT OVERVIEW

- › Rear attach for use on acreages, farms and municipalities
- › Category II, III
- › 90 - 225 hp

FEATURES

- › Spout rotator and deflector available as manual or hydraulic
- › Standard shear bolts on all PTOs

OPTIONS

- › Truck loader chute, 1080 & 1200 models

AVAILABLE COLORS*

- ›     

*Red is the standard color.

Farm King Snowblowers are built to work hard for many winters to come. Designed to be durable and rugged, Farm King Snowblowers offer excellent value in a snowblower that will stand the test of time. These heavy-duty snowblowers are available in widths ranging from 96" to 120".

The Farm King snowblower utilizes a powerful hydraulic motor to control the spout rotation. Using a motor to control rotation increases the blower's responsiveness and gives the operator a greater range of control over the placement of the snow. Standard on all heavy-duty models, a hand crank optional is available on model 960.



Model 960 - 96" (2.4 m) cutting width, 3-point hitch Category II / III
For tractors 90 - 125 hp

Model 1080 - 108" (2.7 m) cutting width, 3-point hitch Category II / III
For tractors 120 - 180 hp

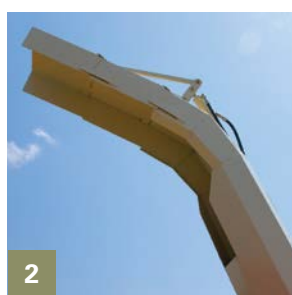
Model 1200 - 120" (3 m) cutting width, 3-point hitch Category II / III
For tractors 180 - 225 hp

HEAVY WEIGHTED

With weights ranging from 1,243 lb to 2,600 lb Farm King Snowblowers are among the heaviest in their class, built with heavy-gauge steel to enhance durability. The gearbox is house in a sealed oil bath that is resistant to heat moisture and debris.

The PTO and sprocket to the main auger are protected from damage by shear bolts.

[1] Dual 15" augers work with a 4-blade fan to pull snow through quickly and evenly **[2]** A 7' or 10.5' commercial truck loader chute is optional on the 1080 and 1200 models **[3]** Models 1080 and 1200 utilize a powerful hydraulic motor to control the spout rotation **[4]** The hydraulically controlled hood deflector on the 1200 provides for quick and simple adjustments on the fly.



SPECIFICATIONS

MODEL >>	960	1080	1200
Cutting width	96"	108"	120"
Cutting height	36"	41"	41"
Replaceable cutting edge	N/A	Yes	Yes
Fan	4-blade	4-blade	4-blade
Fan dimensions	32" x 9"	34" x 12"	34" x 12"
Replaceable fan housing	N/A	7 gauge	7 gauge
Drive fan	540 RPM oil bath gearbox	1000 RPM oil bath	1000 RPM oil bath
Auger diameter	15" (dual)	15" (dual)	15" (dual)
Auger drive	#60 chain	#80 chain	#80 chain
Spout rotator - manual (hand crank) - hydraulic motor	Optional Standard	N/A Standard	N/A Standard
Spout deflector - manual (6 position) - hydraulic cylinder	Standard Optional	N/A Standard	N/A Standard
Skid shoes	Adjustable and replaceable	Adjustable and replaceable	Adjustable and replaceable
Hitch category	Cat. II std Cat. II Q.H. std Cat. III Q.H. narrow	Cat. II std Cat. III Q.H. std Cat. III Q.H. narrow	Cat. II std Cat. III Q.H. std Cat. III Q.H. narrow
Hitch adjustment	Fixed	2 position	2 position
Tractor requirement	90 - 125 hp	120 - 180 hp	180 - 225 hp
Weight	1243 lb	2398 lb	2600 lb



REAR BLADES

Series 30, 45, 60, 80, 100, 150

ALLIED
by **Farm King**

PRODUCT OVERVIEW

- › Constructed for ditching, scraping, landscaping and snow removal applications
- › Category I, II, III
- › 15 - 150 hp required

FEATURES

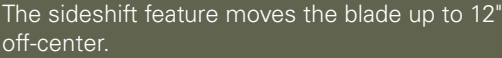
- › Reversible and replaceable cutting edge
- › No tools are required for adjusting the angle
- › Pivot Pin designed with tight tolerances

OPTIONS

- › Hydraulic angle adjustment, Series 60

Farm King has been building a wide variety of rear blades for several decades. These blades are manufactured using more steel, which adds strength, longevity and durability to each blade. Available in five series suitable for tractors ranging from 15 hp to 150 hp, Farm King Rear Blades are capable of tackling tough scraping projects.

These rear blades have been precisely built, with particular attention to the pivot point. To minimize metal-on-metal wear and maximize blade longevity, the pivot point has been designed with tight tolerance and built to those specifications.



Widths: Model 3048 - 4' / Model 3060 - 5' / Model 3072 - 6'
For tractors up to 30 hp

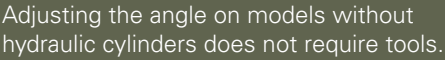
Widths: Model 4560 - 5' / Model 4572 - 6' / Model 4584 - 7'
For tractors up to 45 hp

Widths: Model 6084 - 7' / Model 6096 - 8'
For tractors up to 60 hp

Widths: Model 8084 - 7' / Model 8096 - 8' / Model 80108 - 9'
For tractors up to 80 hp

Widths: Model 10096 - 8' / Model 100108 - 9'
For tractors up to 100 hp

Widths: Model 15096 - 8' / Model 150108 - 9' / Model 150120 - 10'
For tractors up to 150 hp



The manual tilt adjustment on the 45 Series tilts the blade up to 15°.

[illegible]

Series 30



For tractors 15 to 30 hp - available in 4', 5' and 6' widths. Manual adjustment. Tilt adjustment is 3-point hitch linkage adjustment.

SERIES	30
3-point hitch	Cat. I
Angle	30° left or right
Angle - forward	5-position
Angle - reverse	5-position

Series 45



For tractors 20 to 45 hp - available in 5', 6' or 7' widths. 15° vertical tilt on both sides. Cutting edge constructed of high carbon steel, 1/2" x 6".

SERIES	45
3-point hitch	Cat. I
Angle	40° left or right
Angle - forward	5-position
Angle - reverse	N/A

Series 60



For tractors 30 to 60 hp - available in 7' and 8' widths. Mechanical linkage. Hydraulic adjustment is optional. Cutting edge constructed of high carbon steel, 1/2" x 6".

SERIES	60
3-point hitch	Cat. II, I optional
Angle	40° left or right
Angle - forward	5-position
Angle - reverse	5-position

Series 80



For tractors 80 hp - available in 7', 8' and 9' widths. Angle adjustment, offset and tilt can be fitted with either hydraulic cylinders or mechanical linkage.

SERIES	80
3-point hitch	Cat. II
Angle	30° left or right
Angle - forward	5-position
Angle - reverse	5-position

Series 100



For tractors 100 hp - available in 8' and 9' widths. Hydraulic angle adjustment, offset and tilt. Cutting edge constructed of high carbon steel, 1/2" x 6".

SERIES	100
3-point hitch	Cat. II and III
Angle	30° left or right
Angle - forward	5-position
Angle - reverse	5-position

Series 150



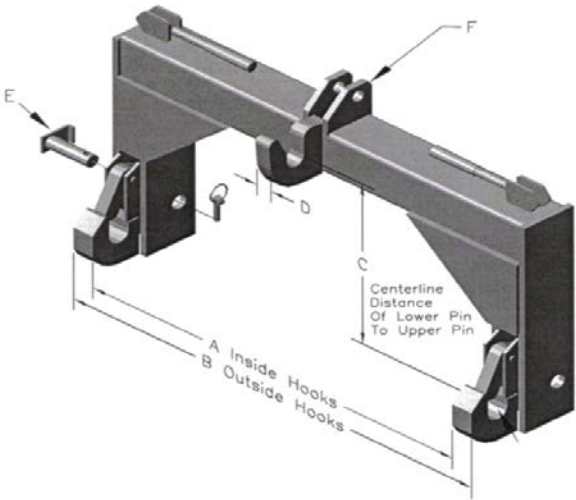
For tractors 150 hp - available in 8', 9' and 10' widths. Hydraulic angle adjustment, offset and tilt. Cutting edge constructed of high carbon steel, 1/2" x 6".

SERIES	150
3-point hitch	Cat. II and III
Angle	30° left or right
Angle - forward	5-position
Angle - reverse	5-position



QUICK HITCH

Category II, II, III, II/III



The best part about owning a tractor is putting it to good use. Regardless of the size of your tractor, a number of implements are available to maximize the usefulness of your machine. Whether you have a compact utility tractor or a large four-wheel-drive, the 3-point hitch can be matched to various types of mowers, tillers, rear blades, box scrapers, cultivators and rakes to turn any tractor into a multi-purpose farming tool.

SPECIFICATIONS

MODEL >>	C3101	C3201	C3301	C3231
Category	I	II	III	II / III
A	25-3/4	32-3/4	38-1/4	38-1/4
B	29-1/2	36-1/4	42-3/4	42-3/4
C	14-1/2 to 17-1/4	14-7/8	18-7/8	19
D	1-1/4	1-1/4	1-1/4	1-1/4
E	7/8	1-1/8	1-7/16	1-1/8
F	3/4	1	1-1/4	1-1/4
Weight	76 lb	134 lb	182 lb	185 lb

www.farm-king.com



Farm King

For more information contact:

E-mail: info@buhler.com

www.farm-king.com

Equipment shown is subject to change without notice. ©2013 Buhler Trading Inc.
Printed in Canada. TSX:BUI Ref: 052013-5000-LM P/N: PLANDCOMP

bühler | a division of Buhler Industries Inc.