



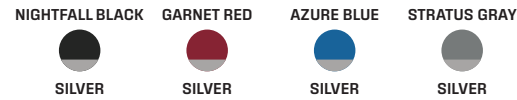
COMPETITOR

SPORT | SIDE CONSOLE | TILLER

- UNMATCHED VERSATILITY
- MORE FUNCTIONAL SPACE
- MODERN DESIGN



COMPETITOR 185X TILLER
[NIGHTFALL BLACK WITH SILVER ACCENT]



	175X	185X	195X	205X
Dry Weight	1699 lb [771 kg]	1774 lb [805 kg]	1918 lb [870 kg]	1979 lb [898 kg]
Persons Capacity	6	6	8	8
Overall Length (Including X-Pods)	19'1"	20'2"	21'2"	22'2"
Boat Motor Trailer Length	20'8"	21'8"	22'8"	23'8"
Boat Motor Trailer Weight	2973 lb [1349 kg]	3169 lb [1438 kg]	3598 lb [1632 kg]	3727 lb [1691 kg]
Boat Motor Trailer Height	6'11"	6'5"	5'11"	5'9"
Beam	98"	98"	98"	98"
Transom Width/Height	98"/25"	98"/25"	98"/25"	98"/25"
Max Hull Thickness	0.196"	0.196"	0.196"	0.196"
Max HP	90 HP	150 HP	200 HP	250 HP
Fuel Capacity	36 gallons	36 gallons	48 gallons	48 gallons
Livewell Aft	50 gal /29 gal	50 gal /29 gal	50 gal /29 gal	50 gal /29 gal
Livewell Bow	21 gallons	21 gallons	21 gallons	21 gallons
Pedestal Seats Included	3	3	3	4

NEW FEATURES

- NEMA NETWORK
- GARMIN 7" DIGITAL DASH
- FUSION STEREO
- BOW DRY STORAGE
- TROLLING MOTOR FOOTPEDAL WELL
- DEDICATED TACKLE STORAGE
- 10' MAX LENGTH ROD STORAGE (185X-205X)
- 46 QUART INTEGRATED COOLER
- X-POD TRANSOM DESIGN



REAR MODULE

The Flex 29 is a rear module divided in two sections - a 29 gallon livewell on one side and additional storage on the other.



REAR MODULE

The Flex 50 module is all about catching fish, since it comes with a 50 gallon livewell.



For more information, visit alumacraft.com

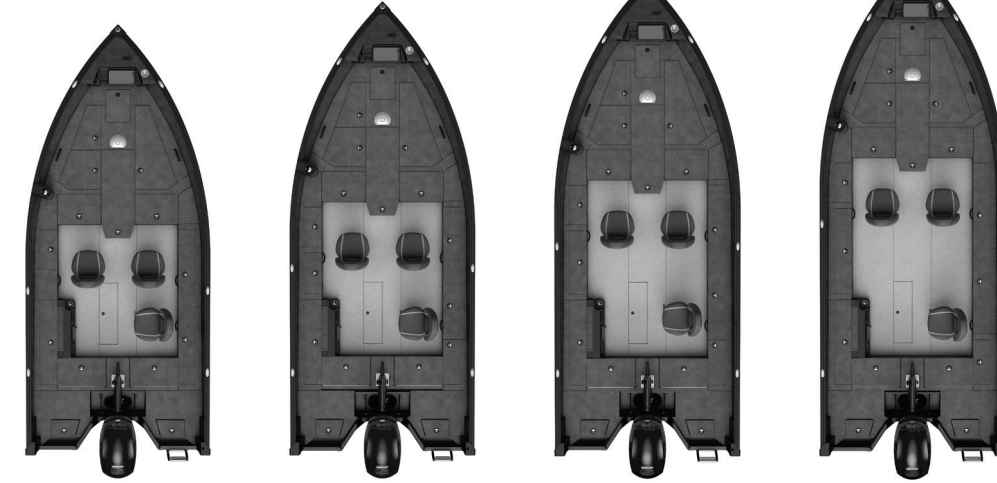


COMPETITOR

AVAILABLE WITH

- TRADITIONAL OUTBOARD ENGINE ON 175X, 185X, 195X AND 205X
- ALUMATRAC ACCESSORIES
- LINQ ACCESSORIES

BOAT LENGTHS



175X

185X

195X

205X

FEATURE HIGHLIGHTS



X-PODS

These transom extensions wrap around both sides of the engine and feature convenient, in-floor storage compartments. The additional 16" of space gives you more standing room and water access at the stern, and easier handling.



2XB HULL

Our exclusive 2XB™ double plated hull dramatically reduces sound and vibration, paired with larger aircraft grade rivets and a seamless one-piece hull bottom, means a soft, quiet and dry ride, even in rough water.



TILLER CAPTAIN'S HELM

Provides improved integration of both switching and electronics and uses injection molded plastic materials to enhance the overall fit and finish. Comes standard with a 7" Garmin digital display, NEMA network, and the option to install up to two 12" graphs.



BOW CONTROL CENTER

The new bow control center gives you the option to mount up to a 12" graph and includes a tool holder, cell phone holder with a USB charging station and a trolling motor footpedal well.



COOLER (PORT SIDE)

Keep ice, snacks and drinks cold all day with an insulated 46 quart/11.5 gallon cooler with a locking lid.



DRY STORAGE

Dry storage in the bow of the boat protects your equipment in any weather conditions.