



20' & 25' 3-POINT BOX

Combining both the box capacity of a drill and the precision seed singulation and placement of a planter, the 2025A and 2525A Planters from Great Plains offer the best of both worlds. With Air-Pro® metering and Clear-Shot® seed tubes, these 20'

and 25' models plant a wide variety of seeds, including corn, soybeans, milo, cotton, and rice, with industry-leading accuracy, and easily switch from planting flat to running on beds by adjusting the heavy-duty straddle-axle gauge wheels.



www.GreatPlainsAg.com

20' & 25' 3-POINT BOX

20' & 25' 3-Point Box	Working Width	Transport Width	Transport Height	Engine H.P. Required	Row Spacing	Base Weight	Seed Capacity
2025A	18' - 20'	21'	8' 6"	185+	9.5", TR30", TR36", TR38", TR36"-15	4,700 - 7,800	48 bu.
2525A	23' 9" - 26' 6"	25' 2"	9' 5"	235+	9.5", TR30", TR36", TR38", TR40", TR38"-15	7,400 - 11,500	60 bu.

See www.greatplainsag.com for complete specifications.



ADDITIONAL STANDARD FEATURES

- Advanced air delivery system
- 11L x 15 bedded single gauge wheels (dual gauge wheel option)
- Tapered-roller gauge wheel bearings
- Protected gauge wheel drive chain
- Lift-assist cylinder on box lid
- Seed level indicator
- Category 3, 3N, and 4N hitch
- 17½"-wide walkboards
- Fold-up ladder bundle
- Acremeter
- Meter cleanout and shutoff
- Disc blade separator
- Seed tube sensors
- LED safety lighting

OPTIONS (see website for complete list of features & options)



GAUGE WHEEL SCRAPERS



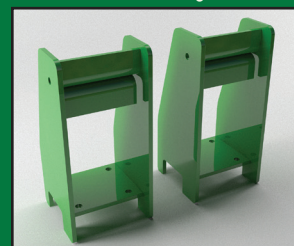
MARKERS



SEED FIRMER



COULTERS & ROW CLEANERS



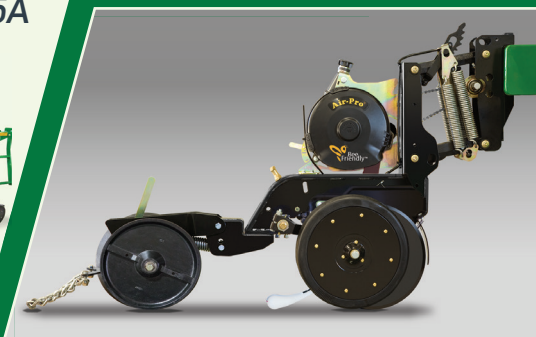
WEIGHT PACKAGE

2025A & 2525A

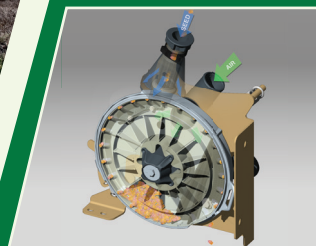


FEATURES & BENEFITS

25 SERIES ROW UNIT



The 25 Series row unit utilizes ductile cast parallel arms for long-term row unit stability. 15", 4mm blades turning on 205 triple-lip sealed bearings ensure long life and accurate seed depth. Blades are offset ½" to slice residue and form a perfect seed trench.



AIR-PRO® METER

This simple, positive air pressure meter offers the highest level of singulation on the market today, and achieves uniform spacing by "dead-dropping" seed into the patented Clear-Shot® seed tube. Gentle on seeds, it is more efficient than a vacuum meter and requires less maintenance.



CHOOSE A PRESS WHEEL

Choose (from left) cast for sticky Delta soils; wedge to pinch the seed trench together while providing a wide footprint; 1"x12" double-V for all-around performance; or spider wheels with drag chains that aggressively close the seed trench.



SEED CAPACITY

The 2.4 bu./ft. seed box combines the large capacity of a grain drill with the accuracy of the 25 Series planter row unit. A V-bottom design ensures that all the seed in the seed box will empty.



AVAILABLE ROW SPACINGS

Multiple row spacings are available to match a variety of needs, including 9.5" single- or 30", 36", 38", and 40" twin-row configurations.



TUNED MANIFOLD AIR SYSTEM

Each Yield-Pro® air manifold contains orifices to deliver the same volume of air to every row. This ensures consistent seed rates throughout.