



# 40' STACK-FOLD PL5200

The new PL5200 is a bulk-fill or row-fill, stack-fold planter designed specifically for the Delta, offering precise singulation and accuracy to achieve even emergence for maximum yields. The PL5200 is available in 36", 38", and

40" single and twin-row configurations. With the twin-row configuration and the exclusive offset hitch, producers have the flexibility to switch between single- or twin-row planting in less than one hour.



[www.GreatPlainsAg.com](http://www.GreatPlainsAg.com)



## 40' STACK-FOLD PL5200

40' Stack-Fold	Working Width	Transport Width (Bulk)	Transport Height (Bulk)	Engine H.P. Required	Row Spacing	Base Weight (Single, Twin)	Seed Capacity
PL5200 12-Row Bulk-Fill	40'	24' 3"	12' 11"	260-325	36", 38", 40"	13,850, 17,450	50 bu.
PL5200 12-Row On-Row	40'	24' 3"	12' 11"	260-325	36", 38", 40"	12,500, 16,100	Single: 3.0 bu./row Twin: 1.6 bu./row

See [www.greatplainsag.com](http://www.greatplainsag.com) for complete specifications.

Specifications are subject to change without prior notification.

Images may not depict current or standard production models.

### Stack-Fold Models

PL5200



## FEATURES & BENEFITS

### ON-BOARD SEED DELIVERY OPTIONS

The new PL5200 planter offers you a choice of on-row individual hoppers or bulk seed with air delivery. The 50-bushel bulk hopper is located close to the tractor to reduce tractor 3-point lifting requirements.



### ADDITIONAL STANDARD FEATURES

- ISO-6 Control System
- 5000 Series Air-Pro® Meter with industry-leading singulation
- Positive air is plumbed through the frame to the meters, resulting in an ultra-clean toolbar
- Hitch-Pin Ready™: just drop the pin and go!
- Lightweight and low compaction
- Two (2) heavy-duty hydraulic fans on bulk-fill models
- One (1) heavy-duty hydraulic fan on individual-hopper models
- Wide steps w/ walkboards
- Rigid aluminum seed delivery tubes
- Unit-mounted coulters
- LED safety lighting

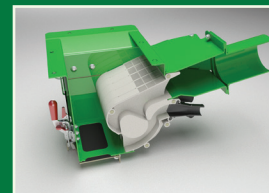


### 3-PT OR 2-PT WITH LIFT ASSIST

PL5200 planters can be optioned with either full 3-point mounting for tractors large enough to handle the weight or 2-point mounted with castoring lift assist wheels to help with the lifting and flotation.

### EXCLUSIVE HITCH OFFSET

The offset hitch helps keep the row units centered on top of the beds and gives twin-row models the ability to convert between single and twin row spacings in under an hour.



### 3-DRIVE OPTIONS

Choose between either ground drive (shown), hydraulic drive or Individual Row Control (IRC) for turn compensation and prescription map planting.

### SIMPLE SEED DELIVERY

Seed distribution on bulk models is handled by a venturi system without any moving parts. This ensures reliability and makes cleanout easy.

### 5000 SERIES ROW UNIT

Utilizes ductile cast parallel arms for long-term row unit stability. 15", 4mm blades are offset 1/2" to form a perfect seed trench.

### OPTIONS (see website for complete list of features & options)



SCALES

ROW-MOUNTED COULTER

7" or 12" MONITOR

CAMERA