

Mounted Rollover Plows



[www.kuhn.com](http://www.kuhn.com)

**MASTER**

Master / Multi-Master / Vari-Master

**NEW**  
FROM KUHN

**Vari-Master L Series**

4-6 Bottoms



**Invest in Quality®**

MASTER MASTER / MULTI-MASTER / VARI-MASTER

# DEPENDABILITY MATTERS

Plowing – Sometimes the proven ways are best! Long-term, profitable farming requires intimate knowledge of your soil's structure and overall fertility.

With the continued increase of herbicide resistant weeds and crops that produce tremendous volumes of residue, savvy producers have realized the value a plow brings to their tillage practices.

With KUHN plows you are investing in a time-tested yet innovative solution for maximizing your crop's yield potential, while at the same time keeping your operating costs in check.

Benefit from a number of improved features including reinforced box sections, rapid adjustment of furrow widths and superior protection systems.

Whether a small, specialized farm or a large scale operation, KUHN has a plow to fit your tillage needs!

## MOUNTED ROLLOVER PLOWS

Master Series  
in brief:

Series	Number of Bottoms
Master 103	2 – 4
Multi-Master	3 – 7
Vari-Master	3 – 7
Vari-Master L	4 – 6

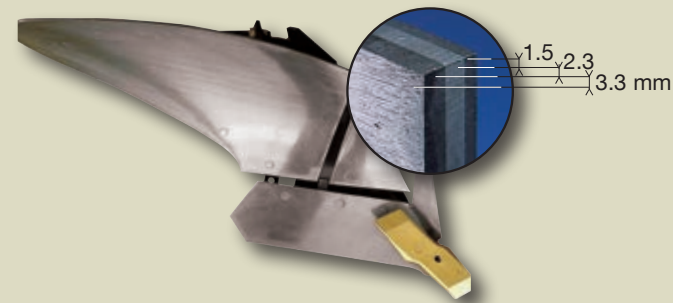


# HIGH-QUALITY BUILDING BLOCKS FOR LONG LASTING PLOWS

All KUHN plows, regardless of size or model range are built with the same high-quality building blocks. Components such as moldboards, shares, and points are interchangeable. No matter how large or small your operation is, you can be sure you are getting durable, professional-quality components designed and manufactured in a state-of-the-art KUHN factory.

## MOLDBOARDS WITH UNEQUAL LAYER TRIPLEX STEEL

Moldboards are made of unequal layer, heat-treated Triplex steel that increases working life by up to 40% longer than standard steel and a hard wearing surface over 1/8" (3 mm) thick.



## DESIGNED TO REDUCE WEAR

Shares are forged with a force of 6,000 tons (5.44 metric tons) ensuring:

- Excellent wear resistance
- Self-sharpening profile due to the grain in the steel resulting from the forging process



## SHARE POINTS

### OLYMPIC® (Standard)

Reversible for maximum efficiency. More pronounced form at wearing zones on the point for longer life and better protection of the landside. Point is self-sharpening for good ground penetration at all times.



### MARATHON®

Reversible for maximum efficiency and features a step, resulting in better landside protection.



### SUPER MARATHON®

Fitted with a tungsten carbide tip. High wear resistance with four to five times the life of a traditional share point. A sharp working edge is maintained for excellent ground penetration. Excellent for highly abrasive soils without rocks or stones.



# CHOOSE THE MOLDBOARD THAT FITS YOUR SOIL CONDITIONS



## H4 MOLDBOARD

The H4, helicoidal, scandinavian-type moldboard provides well-formed plowing to a normal depth range of 7-12" (18-30 cm). The share is fitted with a reversible/replaceable point that greatly increases the life of the share.

Recommended for fall plowing, the H4 bottom is especially suited for heavy and damp clays. Furrow passes are well defined and trash burial is excellent.



## N MOLDBOARD

The helicoidal-cylindrical, semi-digger N moldboard plows to a depth of 14" (36 cm). Designed as a highly versatile bottom, it is cylindrical at front, helicoidal at rear. A low draft ensures a partly broken furrow with excellent trash burial.

Recommended for spring plowing, this moldboard is versatile and works well in sandy or clay soils.



## VP SLATTED MOLDBOARD

The VP slatted moldboard is composed of independent and interchangeable slats. Reduces pulling power required, due to a lower moldboard surface area.

Designed for use in extremely sticky muck and clay soils. Not for use in sand or loam soils or in soils with rocks or stones. The multiple slats allow individual replacement when worn.

Horsepower	40	60	80	100	120	140	160	180	200	220	240	260	280	300	320	340	360	380	400	420	
<b>Master 103</b>		2 BOTTOM																			
			3 BOTTOM																		
				4 BOTTOM																	
<b>Master 153</b>				3 BOTTOM T																	
					4 BOTTOM T																
						5 BOTTOM T															
							3 BOTTOM NSH														
								4 BOTTOM NSH													
									5 BOTTOM NSH												
<b>Vari-Master L</b>										4 BOTTOM NSH											
											5 BOTTOM NSH										
												6 BOTTOM NSH									
													5 BOTTOM T								
<b>Master 183</b>														6 BOTTOM T							
															7 BOTTOM T						
																5 BOTTOM NSH					
																	6 BOTTOM NSH				

# CHOOSE YOUR PLOW LEG PROTECTION

With the Master Series you can customize your plow leg protection to best suit your working conditions. Traction-bolt security is an economical choice and is best suited for sandy or loam soils free of large rocks. Non-stop hydraulic reset is the trouble-free choice for rocky or hard soils and provides ultimate protection with continuous plowing.



T



NSH

## TRACTION BOLT (T) – AVOIDS THE PROBLEMS OF SHEAR BOLTS

A clean break of the traction bolt, following a force of 5,280 – 8,820 pounds (2,395 – 4,000 kg) at the plow point, avoids the risk of nuisance shearing.

- The bolt (A) runs with the line of force and is pulled apart – unlike shear bolts which are cut
- The bolt support never deforms or becomes rounded
- Once the bolt breaks, it simply falls away for quick and easy replacement
- After years of use the plow bottoms remain perfectly inline



## NON-STOP HYDRAULIC (NSH) RESET

When a field obstacle is met, a rapid breakaway of the plow leg occurs. Once the obstacle is passed there is an increase in pressure, bringing the bottom quickly and firmly back into working position. The system also acts as a shock absorber in rocky ground, increasing plow life.

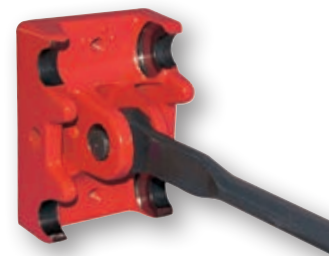
### BENEFITS:

- 55 pounds lighter per bottom than a mechanical auto reset system
- Share points lift up 24" or move 8" to either side
- More reliability and less wear with hydraulic technology
- Quick share point adjustments from 1,320 – 2,860 pounds (599 – 1,297 kg) of tripping pressure

Optional MaxiBar system: allows the top tripping pressure to be increased from 2,860 – 5,500 pounds (1,297 – 2,495 kg), while maintaining the flexibility of the system. Recommended for very hard soils such as dried clay.

## HEAVY-DUTY PLOW LEG ARTICULATION AND TIE ROD

All force is transmitted in a straight line through a one-piece forged and heat treated tie rod.



# CHOOSE YOUR LEVEL OF ADJUSTABILITY

Choose either bolted simplicity or instant hydraulic control of cutting width. With KUHN you have a choice of either the Multi-Master or Vari-Master system to meet your specific needs.



## MULTI-MASTER

Adjustments can easily be made to the working width, in both the traction-bolt and non-stop hydraulic machines, by pivoting the plow leg support on the beam and placing the bolt in the corresponding width setting hole.

- Master 103: 14" and 16" (36 cm and 41 cm)
- Multi-Master 153: 14", 16" and 18" (36 cm, 41 cm and 46 cm)
- Multi-Master 183: 14", 16", 18" and 20" (36 cm, 41 cm, 46 cm and 51 cm)



## VARI-MASTER

The working width is changed hydraulically from the tractor cab. The correction of the front furrow and plow aligning settings are carried out automatically as the width changes. For plow rollover, the plow bottoms fold up automatically to their narrowest width for the maximum possible ground clearance. After rollover, the plow returns to the normal working width.

- Vari-Master 153: 12"–20" (30 cm – 51 cm) in 40" (102 cm) point-to-point
- Vari-Master 183: 12"–19" (30 cm – 48 cm) in 38" (97 cm) point-to-point
- Vari-Master L: 14"–22" (36 cm – 56 cm) in 38" (97 cm) point-to-point

## VARIABLE WIDTH ADVANTAGES

- Instant adaptation to available traction
- Saves time and reduces fuel consumption
- Maintain working speed in difficult conditions
- Able to bury different trash levels
- Neater field finish
- Avoids obstacles and cleans up difficult, unplowed areas

# CUSTOMIZE YOUR TRASH BURIAL



## TRASHBOARD

For trash burial in difficult conditions where the quantity of trash may otherwise block up the skimmers.



## HELICOIDAL ZH SKIMMER

Helicoidal skimmer for deep trash burial. Well adapted to grasslands and fields with cover crops.



## ZRL HIGH-CAPACITY SKIMMER

High-capacity skimmer for trash incorporation throughout the soil profile. Excellent straw and corn trash burial.



## PRESS ARMS WITH HYDRAULIC RELEASE

The press arms allow for the use of a furrow press with easy hookup and hydraulic push-off. On the pickup hook part of the arm, where there is the most risk of damage, all grease zerks and hydraulic hoses are protected inside the structure of the head. The arm folds up conveniently for transport.



## DISC COULTERS

Discs have a diameter of 20" (51 cm), plain or notched, with the added choice on the traction bolt models of a 22" (56 cm) disc. The disc serves to cut the furrow wall in front of the plow bottom giving a cleaner finish, and improving trash sizing and incorporation.

## INDEPENDENT, EASY TO ADJUST SKIMMERS (103, 153 and 183 models only.)



Each skimmer is totally independent left from right and is firmly held in a sheath-like support. The skimmers are shear bolt protected and are adjustable in three directions:

- 1 Forward and backward – with a choice of three positions, the sheath bolts to the leg support via countersunk holes to avoid any risk of free play.
- 2 Up and down – rapid and precise height adjustment [7 1/2" (19 cm) of adjustment] also with countersunk holes in the skimmer leg for easy locking of the leg at the desired height.
- 3 Side to side – for correct adjustment in relation to the disc coulters (where fitted).



## MASTER 103

# HIGH-STRENGTH HEADSTOCK AND FRAME

The Master 103 plows are built to be robust, reliable and economical machines. Only available in the Multi-Master version, these plows have a large trash burial capacity with the ability to adjust the traction-bolt models from 28" to 29 1/2" (71 cm to 75 cm) of underbeam clearance. This range offers independently mounted skimmers for quick and easy adjustment. The 103 plows have a depth control wheel in line with the frame and a transport wheel option fitted with suspension.



## MONOBLOC HEADSTOCK

Simple adjustment of leveling by stops. Easy storage with built-in toolbox in headstock for models 3E/ 4 NSH.

Rollover shaft diameter (hardened alloy):  
 - 2 3/4" (7 cm) on 2E/ 3 T  
 - 3 7/20" (8.5 cm) on 2E/ 3 NSH and 3E/ 4 T  
 - 3 1/2" (9 cm) on 3E/ 4 NSH



## HIGH-STRENGTH FRAME

Simplified adaptation to tractor wheel settings. Mechanical adjustment of plow angling (front furrow width).

Frame section:  
 - 4" (10 cm) for 2E/ 3 T & NSH - 3E/ 4 T  
 - 4 1/2" (11.5 cm) for 3E/ 4 NSH  
 - 4" (10 cm) for extension



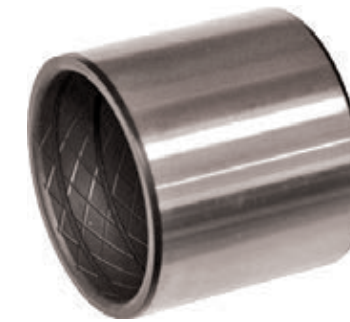
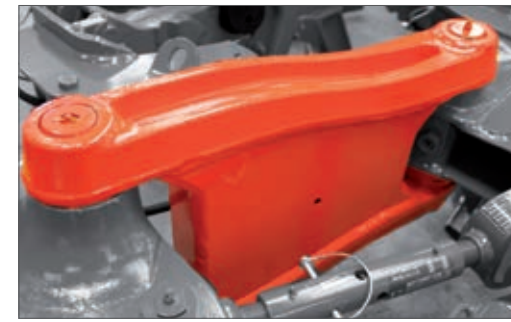
**EXCLUSIVE TO KUHN**

**FORGED AND HEAT TREATED ONE PIECE MAIN LINK**

Designed for strength and long life, the main link is assembled with either bronze or steel bushings, depending on the model of plow.

Main link on Multi-Master 153: 13" (33 cm)

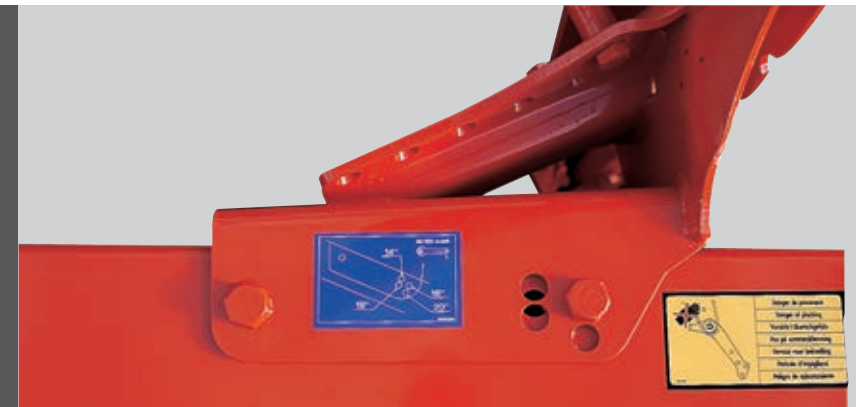
All moving pivot points are chromed, prevented from rotating and assembled with wearing bushings to reduce risk of jamming and provide low maintenance.



**EXCLUSIVE TO KUHN**

**MAIN BEAM**

The 6" (15 cm) on the Multi-Master 153 and 7" (18 cm) on the Multi-Master 183 main beam is supported by a side-mounted, triangular reinforcement welded along the length of the front section. This strengthens the beam in this high-stress area and gives substantial advantages when compared to a conventional plow design.

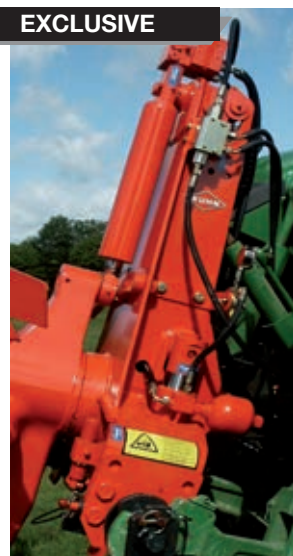


**MULTI-MASTER 153 / 183**

# DESIGNED TO PROVIDE OPERATORS WITH THE ULTIMATE VERSATILITY

The Multi-Master 153 and 183 plows have been designed to meet the requirements of many operations to provide a machine that is easy to use and strong enough to meet the demands of today's mid-size to large operations to achieve maximum productivity. This plow range is available from 3 to 7 bottoms in either traction-bolt or non-stop hydraulic. The strength, simplicity and different options available make these plows fully adaptable to your conditions.

**EXCLUSIVE**



**AVOID WEAR AND TEAR WITH OPTIDRIVE HEADSTOCK (ON MULTI-MASTER AND VARI-MASTER 183 MODELS ONLY)**

Both the tractor and plow are protected from wear as the vertical travel range absorbs shocks during maneuvers. The suspension adapts to the weight of the different plows by changing the pressure on the Optidrive hydraulic system.

- While plowing, the Optidrive system is automatically locked for proper draft control on the tractor.
- The suspension is active in headlands, protecting both the tractor and the plow.

Switching from working to transport is easy and does not require adjustment or unhitching of the top link, thanks to the moveable double frame.

**ROBUST MONOBLOC HEADSTOCK (ON MULTI-MASTER AND VARI-MASTER 153 MODELS ONLY)**

The headstock is mounted onto heavy-duty conical bearings. Computerized machining tools ensure a precise manufacturing process resulting in improved quality and reliability.



- 1 A swift-hitch cross-shaft fits quickly and easily into the adjustable pickup cups.
- 2 A single- or double-acting rollover cylinder features a very low hydraulic pressure demand for effortless rollover. Following rollover, a hydraulic locking valve locks the plow into its work position.
- 3 A weatherproof toolbox is incorporated into the headstock, for convenient storage of wrenches and replacement bolts.



# HIGHLY ADAPTABLE TO SPECIFIC FIELD CONDITIONS

The KUHN Vari-Master plow series meets the demands of today's row-crop and specialty farms. You won't have to stop plowing with the non-stop hydraulic auto-reset system, which provides complete and continuous protection of the plow leg. Vari-Master plows are highly adaptable to specific field conditions. The quick set up into work/transport positions, easy adjustments and variable working widths help you cover more acres in less time.



## REDUCE SOIL COMPACTION

The on-land models are designed for tractors fitted with wide wheels, tracks and dual wheels. The large dimensioned parallelogram system enables this plow range to adapt to tractors with an overall width of up to 10 1/2' (3 m), while at the same time maintaining the possibility to plow in-furrow (as shown above). Furrow compaction can be avoided by plowing on-land, a concern when using the large tractors needed for this range.



### EXCLUSIVE TO KUHN

#### ONLY ONE ADJUSTMENT NECESSARY WITH COMBINED FRONT FURROW WIDTH/ANGLING

The front furrow width is adjusted to its optimum setting according to the tractor linkages and ground conditions.

Because of the parallelogram of the two linkages, any adjustment in front furrow width automatically adjusts the angling of the plow, allowing the tractor to always pull in perfect line.

Adjustments are quickly carried out by simply adjusting the turnbuckle or by activating the hydraulic cylinder (optional).

One adjustment is sufficient unlike conventional systems where the front furrow width and the plow alignment are separated. With the conventional system as one adjustment interacts with the other, several successive adjustments are necessary.



#### ONLY ONE ADJUSTMENT NECESSARY

- Instant adaptation to available traction
- Time savings and reduced fuel consumption
- Maintain working speed in difficult conditions
- Ability to cope with different levels of trash
- Clean field finish
- Avoid obstacles and tidy up difficult unplowed areas



- On the Vari-Master models, the entire variable-width linkage system is enclosed in the plow structure giving maximum protection from water, dust and possible shocks.
- All moving pivot points are chromed, prevented from rotating and assembled with wear bushings to limit risk of jamming and provide low maintenance.



#### MAIN BEAM

The 6" (15 cm) on the Vari-Master 153 and 7" (18 cm) on the Vari-Master 183 main beam is strengthened by a triangular reinforcement welded along the length of the front section, a substantial advantage compared to conventional plow design.



#### AVOID DAMAGE TO HYDRAULIC HOSES

The rollover shaft is assembled to allow the passage of hydraulic hoses through the center of the headstock, preventing twisting during rollover and possible damage.

#### FORGED AND HEAT TREATED ONE PIECE MAIN LINK

Designed for strength and long life, the main link is assembled with steel bushings and the pins locked to prevent rotation.



VARI-MASTER L

# EFFICIENT PLOWING MEETS GREAT PERFORMANCE

The Vari-Master L fully mounted rollover plow series sets a new standard for efficient plowing performance. Available with 4 to 6 bottoms, the on-land configuration reduces soil compaction at the bottom of the furrow and allows the tractor to be configured with duals or tracks. The new skimmers, with KUHN-patented tool-free adjustments, save time while optimizing trash burial. Standard hydraulic working width adjustment quickly adapts the furrow from 14" to 22" (36 cm to 56 cm) to match working depth and soil characteristics. Non-stop Hydraulic (NSH) reset protects the plow from damage and quickly returns the plow to work without operator intervention. Like all KUHN plows, the Vari-Master L is equipped with the exclusive Triplex steel moldboards for unmatched durability in the field.

## SMART PLOWING



### SMART PLOWING

This revolutionary new option turns the Vari-Master L into an intelligent, ISOBUS-controlled machine. With the basic Smart Plowing system, all of the plow settings (working width, offset, working depth, leveling, etc.) are controlled from the ISOBUS terminal. These settings can be stored to simplify subsequent start-ups, saving valuable time and allowing the operator to focus on other functions.

The additional Smart Plowing – Line option uses GPS to adjust the working width through the ISOBUS terminal. This ensures perfectly uniform and straight plowing regardless of any field curves or irregularities.



### HEADSTOCK AND FRAME DESIGN

The headstock and frame design gives operators the choice of on-land or in-furrow operation with tractors up to 300 horsepower. The specialized shape of the main frame maximizes the offset without adding unnecessary weight to the plow. With this design, high-quality plowing with duals or even tracks is no problem.



### SKIMMER DESIGN

The skimmer design features tool-free adjustments for both depth and attack angle. Changing both the depth and attack angle promotes excellent residue flow and burial in all conditions.



### HYDRAULIC WIDTH ADJUSTMENT WITH INTEGRATED LINKAGE

The standard hydraulic adjustment changes the furrow width to match a variety of soil types. Exclusive linkages integrated into the frame protect the adjustment components from damage.



### WHEEL OPTIONS

The Vari-Master L can be customized to suit any operation with multiple wheel options that provide outstanding depth control and safe, comfortable road transport.





Customized to Fit Your Operation

## OPTIONAL EQUIPMENT



### HYDRAULIC OFFSETTING AND ANGLING

Allows adjustment of the front furrow width from the tractor seat.

*Available on Master 153  
Standard on Master 183 and Vari-Master L*



### BEAM FOLDING CYLINDER

Hydraulic beam folding cylinder recommended for 4 and 5 bottom models. The link is fitted as standard for changes in working width.

*Available on Multi-Master 153  
Standard on Master 183*



### DEPTH WHEEL WITH SHOCK ABSORBER

The shock absorber removes the shock of the wheel falling during rollover and also ensures the wheel is in the correct rearward inclined position as the plow is lowered back into work.

*Available on Master 153 (5 bottom) and Master 183  
Standard on Vari-Master L*



### STANDARD RUBBER DEPTH WHEEL

The depth wheel follows any change of plowing width. It features simple bolt adjustments, with the ability to set left and right sides independently. It can be placed in many positions on the frame to ensure optimum positioning for all conditions.

Master 103: 24" (61 cm) wheel  
Master 153 and 183: 27" (69 cm) wheel



### TRANSPORT WHEEL WITH SUSPENSION

The plow can be transported on the road in complete safety thanks to a transport wheel, equipped with its own suspension system to protect the plow and tractor from transport shocks. The wheel can be swung into the transport position in a single movement by pulling the locking pin.

Master 153: 22" (56 cm) wheel  
Master 183 and Vari-Master L:  
26" (66 cm) wheel



## Model Specifications

	MASTER 103 2E	MASTER 103 3 (2E+1)	MASTER 103 3E	MASTER 103 4 (3E+1)	MULTI-MASTER 153 3E	MULTI-MASTER 153 4E	MULTI-MASTER 153 5 (4E+1)	VARI-MASTER 153 3E	VARI-MASTER 153 4E	VARI-MASTER 153 5 (4E+1)	MULTI-MASTER 183 5E	MULTI-MASTER 183 6 (5E+1)
<b>DIMENSIONS</b>												
Number of bottoms per side	2	3		4	3	4	5	3	4	5	5	6
Extendable by one bottom	Yes	No	Yes	No	Yes		No	Yes		No	Yes	
Standard moldboards	H4 long helicoidal				H4 long helicoidal			H4 long helicoidal			H4 long helicoidal	
Hydraulic rollover with 1 cylinder	Standard				Standard			Standard			Standard	
Maximum tractor power	60 hp (45 kW)	90 hp (66 kW)	90 hp (66 kW)	120 hp (88 kW)	135 hp (101 kW)	180 hp (132 kW)	225 hp (166 kW)	135 hp (101 kW)	180 hp (132 kW)	225 hp (166 kW)	275 hp (202 kW)	330 hp (246 kW)
Approximate machine weight for T version	1,168 lbs (530 kg)	1,631 lbs (740 kg)	1,664 lbs (775 kg)	2,127 lbs (965 kg)	2,491 lbs (1,140 kg)	3,218 lbs (1,460 kg)	3,770 lbs (1,710 kg)	2,723 lbs (1,235 kg)	3,395 lbs (1,540 kg)	4,001 lbs (1,815 kg)	4,508 lbs (2,045 kg)	5,093 lbs (2,310 kg)
Approximate machine weight for NSH version	1,488 lbs (675 kg)	1,973 lbs (895 kg)	2,127 lbs (965 kg)	2,623 lbs (1,190 kg)	2,789 lbs (1,280 kg)	3,604 lbs (1,635 kg)	4,244 lbs (1,925 kg)	2,623 lbs (1,190 kg)	3,671 lbs (1,665 kg)	4,288 lbs (1,945 kg)	4,971 lbs (2,255 kg)	5,633 lbs (2,555 kg)
Working width	14" or 16" (35 or 40 cm) delivered at 16" (40 cm)				14", 16", 18" (35, 40, 45 cm) delivered at 16" (40 cm)			12" - 20" (30 - 50 cm)			14", 16", 18", or 20" (35, 40, 45, or 50 cm) delivered at 18" (45 cm)	
Underbeam clearance	27.5" (70 cm)				31.5" (80 cm)			31.5" (80 cm)			31.5" (80 cm)	
Point to point clearance	35" (90 cm)				40" (102 cm)			40" (102 cm)			38" (96 cm)	
Offset and angling adjustment	Mechanical				Turnbuckle or optional hydraulic cylinder			Turnbuckle or optional hydraulic cylinder			Standard	
Hitch	Cat. 2 with cross-shaft				Cat. 2 with cross-shaft			Cat. 2 with cross-shaft			Cat. 3 with cross-shaft	
Suspension headstock	-				-			-			Standard	
Main beam dimension	3.9" x 3.9" (100 x 100 mm)				5.9" x 5.9" (150 x 150 mm)			5.9" x 5.9" (150 x 150 mm)			7.1" x 7.1" (180 x 180 mm)	
Extension beam dimension	3.9" x 3.9" (100 x 100 mm)				5.9" x 5.9" (150 x 150 mm)			5.9" x 5.9" (150 x 150 mm)			7.1" x 7.1" (180 x 180 mm)	
Hydraulic beam folding	-				Standard			Standard with memory cylinder			-	
Required tractor hydraulic connections	1 DA for rollover				1 DA for rollover			2 DA for rollover and width adjustment			2 DA for rollover and angling/offset	
Adjustable depth wheel with tire	600 x 210 mm standard				690 x 320 mm standard			690 x 320 mm standard			690 x 320 mm standard	
Maximum outside tractor tire width when working on-land	-				-			-			-	

## Model Specifications

	MULTI-MASTER 183 7 (5E+1+1)	MULTI-MASTER 183 OL 5E	MULTI-MASTER 183 OL 6 (5E+1)	MULTI-MASTER 183 OL 7 (5E+1+1)	VARI-MASTER 183 5E	VARI-MASTER 183 6E (5E+1)	VARI-MASTER 183 7 (5E+1+1)	VARI-MASTER L OL 4E	VARI-MASTER L OL 5 (4E+1)	VARI-MASTER L OL 5E	VARI-MASTER L OL 6 (5E+1)
<b>DIMENSIONS</b>											
Number of bottoms per side	7	5	6	7	5	6	7	4	5	5	6
Extendable by one bottom	No	Yes	Yes on T model, No on NSH model	No	Yes	Yes	No	Yes	No	Yes	No
Standard moldboards	H4 long helicoidal	H4 long helicoidal		H4 long helicoidal			H4 long helicoidal		H4 long helicoidal		
Hydraulic rollover with 1 cylinder	Standard	Standard		Standard			Standard		Standard		
Maximum tractor power	385 hp (287 kW)	275 hp (202 kW)	330 hp (246 kW)	385 hp (287 kW)	275 hp (202 kW)	330 hp (246 kW)	385 hp (287 kW)	200 hp (150 kW)	250 hp (186 kW)	250 hp (186 kW)	300 hp (224 kW)
Approximate machine weight for T version	5,644 lbs (2,560 kg)	5,011 lbs (2,273 kg)	5,302 lbs (2,405 kg)	5,853 lbs (2,655 kg)	4,828 lbs (2,190 kg)	5,335 lbs (2,420 kg)	5,842 lbs (2,650 kg)	-			
Approximate machine weight for NSH version	-	5,357 lbs (2,430 kg)	5,886 lbs (2,670 kg)	-	5,027 lbs (2,280 kg)	5,644 lbs (2,560 kg)	6,261 lbs (2,840 kg)	4,675 lbs (2,120 kg)	5,291 lbs (2,400 kg)	5,401 lbs (2,500 kg)	5,898 lbs (2,675 kg)
Working width	14", 16", 18", or 20" (35, 40, 45, or 50 cm) delivered at 18" (45 cm)				12" - 19" (30 - 48 cm) hydraulically adjustable			14" - 22" (35 - 56 cm) hydraulically adjustable			
Underbeam clearance	31.5" (80 cm)				31.5" (80 cm)			31.5" (80 cm)		31.5" (80 cm)	
Point to point clearance	38" (96 cm)	35" (89 cm) for T models; 38" (97 cm) for NSH models		38" (96 cm)			39.8" (101 cm)		37.4" (95 cm)		
Offset and angling adjustment	Standard	Hydraulic offset and mechanical angling adjustment		Standard combined hydraulic offset and angling adjustment			Hydraulic				
Hitch	Cat. 3 with cross-shaft				Cat. 3 with cross-shaft			Cat. 3 / 4N with cross-shaft			
Suspension headstock	Standard				Standard			Standard			
Main beam dimension	7.1" x 7.1" (180 x 180 mm)				7.1" x 7.1" (180 x 180 mm)			5.9" x 5.9" (150 x 150 mm)		5.9" x 5.9" (150 x 150 mm)	
Extension beam dimension	7.1" x 7.1" (180 x 180 mm)				7.1" x 7.1" (180 x 180 mm)			5.9" x 5.9" (150 x 150 mm)			
Hydraulic beam folding	-	Standard (allows work in-furrow)		Standard with memory cylinder			-				
Required tractor hydraulic connections	2 DA for rollover and angling/offset				3 DA for rollover, working width, and angling/offset			3 DA for rollover, working width, and offset			
Adjustable depth wheel with tire	690 x 320 mm standard				690 x 320 mm standard			690 x 320 mm standard			
Maximum outside tractor tire width when working on-land	-	10'6" (3.2 m)		-			10'4" (3.1 m)				



## READY, SET... PLOW! (KEY STEPS TO OPTIMIZE PLOWING)

**1.** Measure tire pressure and distance between rear tractor tires. **2.** Adjust each according to outlined recommendations. **3.** Adjust 3-point lower links to be in the rearmost position (and not allowed to float vertically). **4.** Measure and adjust 3-point lower links so that both are the same length. **5.** Set 3-point top link according to conditions: oblong hole for normal/hilly conditions, or round hole for difficult conditions. **6.** Preset skimmers to the desired working depth. **7.** Set depth control wheel for plowing depth desired. **8.** Set side-to-side leveling turn knob so that sidewall forms a 90° angle. Set opposite side turn knob for the same thread length. **9.** Adjust top link turnbuckle length so plow body is horizontal when in the ground. **10.** Set first bottom width to make share slightly overlap the uncut ground.

# COMPLEMENTARY PRODUCTS

## MORE PRODUCTS TO MEET YOUR NEEDS

With over 700 models of equipment, we have the most complete implement line in the industry. Whether you have a small or large operation, we have a broad range of models and options to help fit your diverse needs.



Grain Drills



Disc Harrows



Fertilizer Spreaders




Power Harrows

For more information about your nearest KUHN dealer and other KUHN products, visit our website at

[www.kuhn.com](http://www.kuhn.com)



Visit our YouTube channel to watch our latest product videos.

 <p><a href="http://www.kuhn.com">www.kuhn.com</a></p>	<p>Your KUHN dealer</p>
---	-------------------------

### KUHN NORTH AMERICA, INC.

Corporate Headquarters  
1501 West Seventh Avenue - Brodhead, WI 53520

Information given in this document is only for informational purposes and is non-contractual. Our machines are in compliance with North American safety standards. In our literature, and for improved illustration of certain details, some safety devices may not be in operating position. When operating these machines, these devices must be operated in accordance with the requirements indicated in the operator's manuals and assembly manuals. We reserve the right to change any designs, specifications or materials listed without further notice. Machines and equipment in this document can be covered by at least one patent and/or registered design. Trademarks cited in this document may be registered in one or several countries.

Find us on

