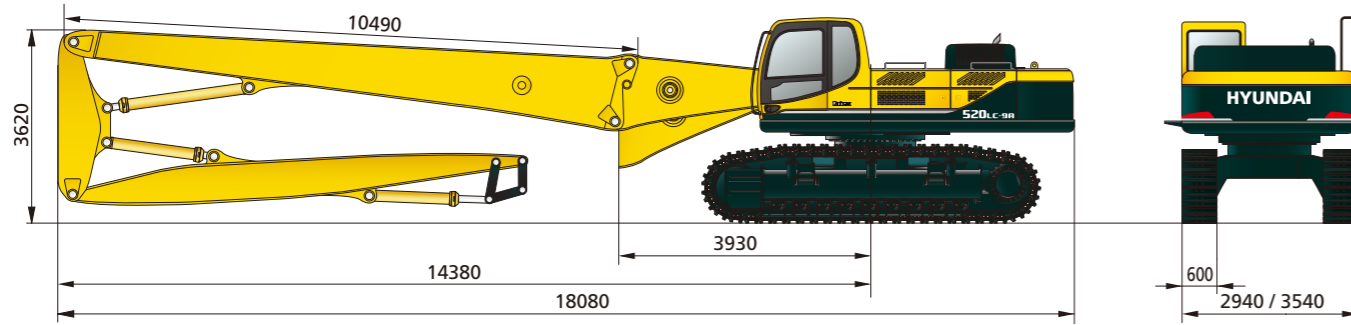


Robex
520LC-9A
Demolition

www.hyundai-ce.com

Specifications

DIMENSIONS



PERFORMANCE COMPARISON

ITEM			R520LC-9A DM
Engine	Maker / Model	-	Cummins QSX11.9
	Power (Net)	PS/rpm	357 / 1,800
	Max. Torque	kgf·m/rpm	186.7 / 1,400
	Displacement	cc	11,900
Swing Speed	rpm		8.9
Travel Speed	km/hr		3.1 / 5.0
Gradeability	Deg		35
Drawbar Pull	ton		38.5
Hydraulic System	Pressure (Power boost)	kg/cm ²	330 (360)
	Flow	ℓ/min	2 x 360
Tank Capa.	Fuel	ℓ	621
	Hyd.(System)	ℓ	262 (480)

OPERATING WEIGHT (APPROXIMATE)

Operating weight, including 13,670mm boom(Ext + Base), 2,720mm Mid arm, 8,000mm End arm, lubricant, coolant, full fuel tank, full hydraulic tank, and all standard equipments.

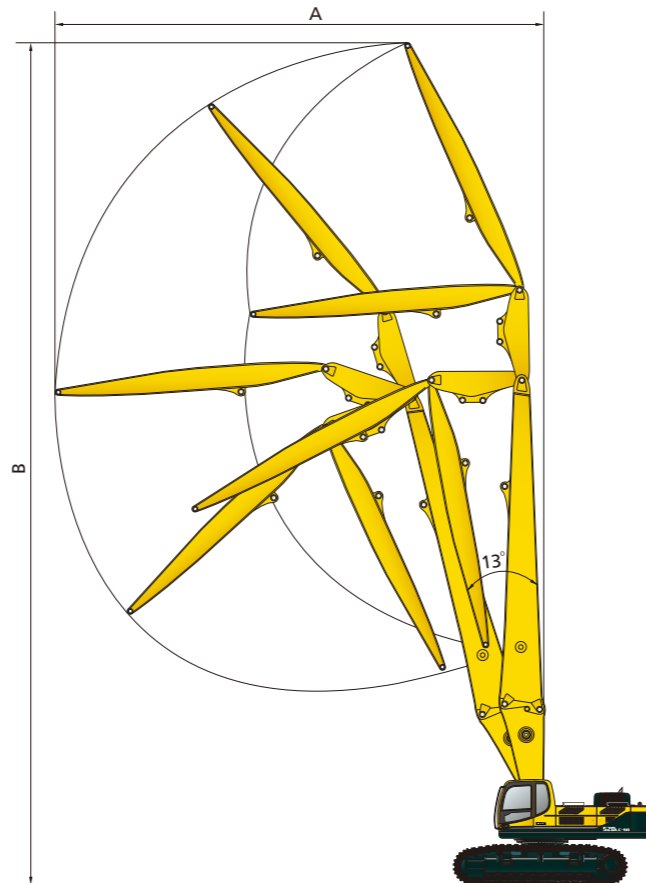
OPERATING WEIGHT

Shoes		Operating weight	Ground pressure
Type	Width mm (in)	kg(lb)	kgf/cm ² (psi)
Triple grouser	600 mm (24")	59,800 (131,840)	1.03 (14.65)
	700 mm (28")	60,340 (133,030)	0.89 (12.66)
	750 mm (30")	60,610 (133,620)	0.84 (11.94)
	800 mm (32")	60,880 (134,220)	0.79 (11.23)

WORKING RANGE

(Unit : mm)

Boom Length	13,750
Mid Arm Length	2,720
End Arm Length	8,000
A. Max. Working Reach	14,360
B. Max. Working Height	26,120
Max. Attachment Weight	2,800 kg



MOVING YOU FURTHER

Robex
520LC-9A
Demolition



*Photo may include optional equipment.

PLEASE CONTACT

HYUNDAI
HEAVY INDUSTRIES CO.,LTD.
CONSTRUCTION EQUIPMENT

Head Office
1000 BANGEOJINSUNHWAN-DORO, DONG-GU, ULSAN, 682-792, KOREA
TEL:(82)52-202-7722, 9807 FAX:(82)52-202-7720

www.hyundai-ce.com

2014. 02 Rev.0

HYUNDAI
HEAVY INDUSTRIES CO.,LTD.