

# MOVING YOU FURTHER

Robex

**220LC-9A**

Amphibious Excavator

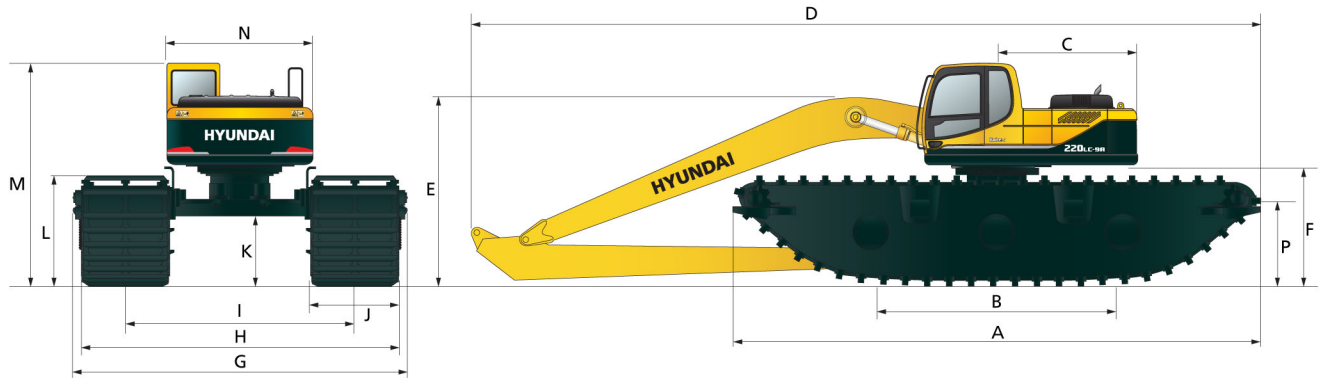


\*Photo may include optional equipment.

# New possibilities Unlimited possibilities

## ■ Dimension

Unit : mm(ft-in)



20 ton (44,000 lb) class excavator

A	Maximum Track Length	9,630 (31' 7")	I	Track Gauge (min/max)	2,850/4,330 (9' 4" / 14' 2")
B	Track Length On Ground	4,150 (13' 7")	J	Pontoon Width	1,620 (5' 4")
C	Rear Upperstructure Length	2,770 (9' 1")	K	Minimum Ground Clearance	1,300 (4' 3")
D	Overall Length	13,870 (45' 6")	L	Track Height	2,030 (6' 8")
E	Height Of The Boom	3,730 (12' 3")	M	Overall Cab Height	4,020 (13' 2")
F	Upperstructure Clearance	2,170 (7' 0")	N	Upperstructure Overall Width	2,740 (8' 12")
G	Overall Width (min/max)	4,800/6,280 (15' 9" / 20' 7")	P	Estimated Water Level	1,550 (5' 1")
H	Track Width (min/max)	4,470/5,950 (14' 8" / 19' 6")			

## ■ Working Ranges

Unit : mm(ft-in)

	Boom length	8,200mm (26' 11")
	Arm length	6,300mm (20' 8")
A	Max. digging reach	15,220mm (49' 11")
A'	Max. digging reach on ground	14,940mm (49' 0")
B	Max. digging depth	10,630mm (34' 11")
B'	Max. digging depth (8' level)	10,520mm (34' 6")
C	Max. vertical wall digging depth	8,480mm (27' 10")
D	Max. digging height	13,670mm (44' 10")
E	Max. dumping height	11,410mm (37' 5")
F	Min. swing radius	4,870mm (16' 0")

## ■ Hydraulic Extendable Pontoons :

- Constructed with premium grade steel
- Designed to be able to float on water
- 3 watertight compartments are sealed with individual manholes for easy inspection and maintenance

## ■ Final Drive (2X2)

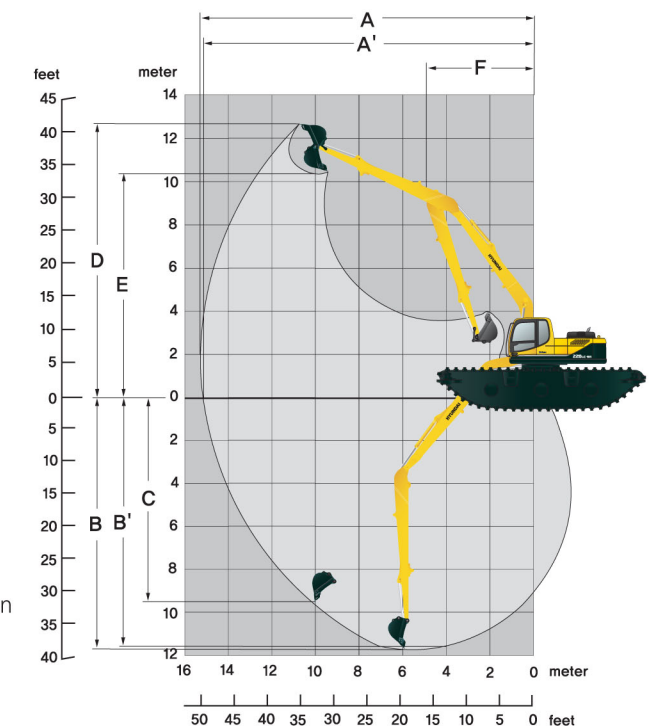
- A proprietary design using multi-synchronous hydraulic motors on each pontoon
- Multiple active motors propelling each pontoon provides sufficient power, making it virtually undeterred in any terrain

## ■ Sprocket

- The hardworking sprockets, rollers and bushings (embedded within the rollers) are machine finished to high precision and subsequently induction hardened.

## ■ Track Shoe/Cleat

- The track shoes/cleats are steel fabricated and are robotically welded to utmost precision.



## ■ Track Chain

- Each pontoon comes with 3 strands of heavy duty track chains, constructed with high yield strength tensile steel.

PLEASE CONTACT