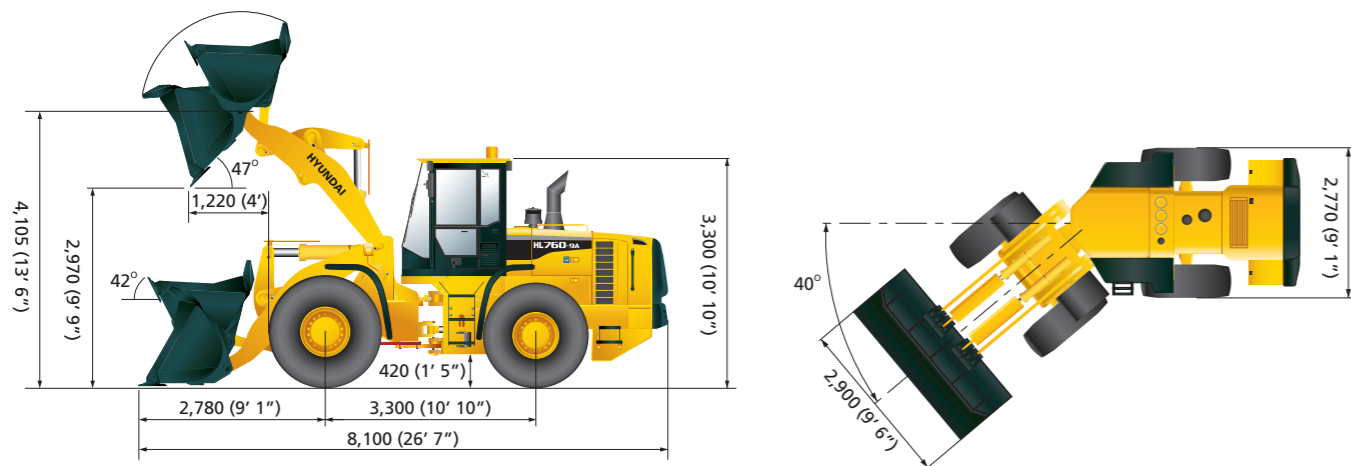


Specifications

HL760-9A Waste Handler

DIMENSIONS



PERFORMANCE COMPARISON

ITEM	HL 760-9A WH		
Engine	Maker / Model	-	Cummins QSB6.7
	Gross power	HP(kW)/rpm	255 (168) / 2,100
	Net power	HP(kW)/rpm	222 (166) / 2,100
	Maximum torque	Kgf·m(lb-ft)/rpm	97 (700) / 1,500
	No. of cylinders	ea	6
Operating weight	kg (lb)	18,350 (40,450)	
Bucket capacity	Heaped	m ³ (yd ³)	3.3 (4.3)
	Struck	m ³ (yd ³)	2.8 (3.7)
Breakout force-bucket	kg (lb)	16,230 (35,780)	
Tipping load	Straight	kg (lb)	14,300 (31,530)
	Full turn	kg (lb)	12,410 (27,360)

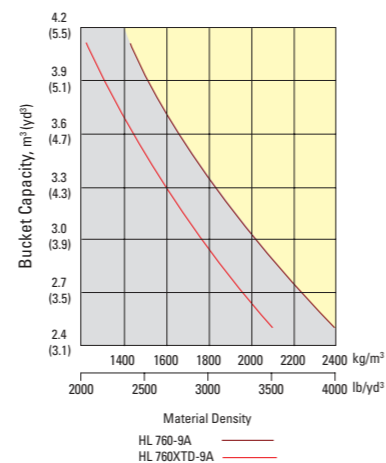
* Engine Type : Watercooled, 4-cycle, turbocharged, charge aircooled direct injection, electronic controlled diesel engine

No derating for continuous operating required up to 2,652m (8,700ft). This engine meets the EPA(Tier 4 interim) / EU(Stage III-B) Emission regulation.

STERING SYSTEM

Type	Load sensing hydrostatic articulated steering		
Pump	Piston pump, 126 liters/min (33.3 gal/min)		
Relief Valve Setting	250 kg/cm ² (3,555 psi)		
Cylinder	Type	Double acting	
	Bore x Stroke	75mm(2.9") x 440mm(17.3")	
Steering Angle	40°(each direction)		

BUCKET SELECTION GUIDE



SUPPLEMENTAL SPECIFICATIONS

Description	Change in operating weight kg(lb)	Change in static tipping load-straight kg(lb)	Change in static tipping load-40° turn kg(lb)
20.5-25 16PR L3	-872 (-1,922)	-670 (-1,470)	-590 (-1,300)
23.5 R25 XHA*	+8 (+18)	+6 (+13)	+5 (+11)

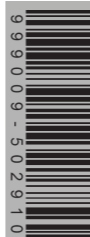
PLEASE CONTACT

www.hyundai-ce.com

2014. 01 Rev.0

HYUNDAI
HEAVY INDUSTRIES CO.,LTD.
CONSTRUCTION EQUIPMENT

Head Office
1000 BANGEOJINSUNHWAN-DORO, DONG-GU, ULSAN, 682-792, KOREA
TEL:(82)52-202-7722, 9807 FAX:(82)52-202-7720



MOVING YOU FURTHER

HL760-9A Waste Handler



*Photo may include optional equipment.

HYUNDAI
HEAVY INDUSTRIES CO.,LTD.