



PROPULSION

OUTBOARDS / STERNDRIVES / INBOARDS / ACCESSORIES

OUR HERITAGE IS RICH WITH SUCCESS

born from a culture of knowledge,

commitment and uncompromising standards.

For 80 years, bold has always been the unifying

factor in the decisions and actions that led us to

become the leader in marine propulsion.

And we do it all for you.

SO YOU CAN GO FASTER. GO FARTHER.

GO BOLDLY.





OUTBOARDS	4	STERNDRIVES	62	TOW SPORT	71	ACCESSORIES	80
JETS	60	INBOARDS	68	DIESEL	74		



VERADO[®]

Our premium outboard platform redefines the category with advanced engineering, innovative technology and refined operation.

250 - 400 HP

P 6



FOURSTROKE

Backed by decades of experience on water all over the world, our FourStroke models deliver reliable, economical performance you can count on season after season.

2.5 - 300 HP

P 16

DURABLE, RELIABLE, POWERFUL

OUTBOARDS

We offer the most complete line of outboard power for fishing boats and speed boats, for pontoons and tenders, for work and for play. Mercury Outboards – Durable. Reliable. Powerful.



PRO XS[®]

Outboards with the hard-charging performance to put you out front and keep you there, Pro XS is the choice of tournament anglers and performance enthusiasts.

115 - 300 HP

^P 38



SEAPRO[™]

Hard-working partners for people who make their living on the water, Mercury SeaPro outboards are engineered to meet the demands of commercial use.

15 - 300 HP

^P 48

REFINED PERFORMANCE

VERADO[®]





Mercury Verado® engines represent the pinnacle of superior outboard design and performance. Built to power the largest boats for the boldest adventures, Verado engines boast advanced engineering and refined operation for boat owners who refuse to compromise. Every Verado feature is designed to deliver the ultimate, most satisfying on-water experience.



350 / 400 VERADO

LEGENDARY POWER

Supercharged torque from the lightweight L6 2.6L powerhead hits the instant you drop the digital throttle, 350 and 400 Verado unleash pure marine muscle. Tuned to power the heaviest offshore boats out of the hole and over the swell, 350 and 400 Verado also have the legs to fly big pontoons and speedy runabouts across the lake.





BUILT TO TAKE IT

350 and 400 Verado are made for bigger boats and big water, with superior Mercury corrosion protection provided by exclusive alloys, finishes and relentless durability testing. 350 and 400 Verado also feature a robust long-bolt powerhead design, maintenance-free valve train, and dual water inlets for consistent cooling and longer life.

SMOOTHER AND QUIETER

350 and 400 Verado combine a powerful and inherently balanced in-line six-cylinder engine with the Mercury-exclusive Advanced MidSection (AMS) with perimeter mounts to virtually eliminate transmission of vibration to the boat. Acoustic engineering applied to the cowl, intake and exhaust means the neighbors won't hear you leave and the fish won't hear you coming.





250 / 300 VERADO

PREMIUM V8 POWER

The smooth, refined power of a V8 4.6-liter powerhead delivers exhilarating acceleration and top speed to run offshore with confidence, with generous displacement and robust design that provide uncompromising durability and reliability. The Mercury-exclusive Advanced MidSection (AMS) and under-cowl noise management features set the standard for smooth, quiet marine propulsion.



EXHILARATING PERFORMANCE

No outboard in the class offers more displacement than the Verado V8 4.6-liter. The performance-inspired 32-valve double-overhead-cam (DOHC) design and long, tuned intake runners produce more torque and allow the engine to reach higher engine speeds (rpm) faster. Weight is trimmed to 600 pounds for improved power-to-weight. Transient Spark calibration optimizes spark timing to boost hole-shot torque by as much as 7 percent, so you can get on plane and get going in an instant.



SUPERIOR FUEL ECONOMY

V8 Verado outboards deliver superior fuel economy at cruising speed and wide-open throttle. Advanced Range Optimization (ARO) calibration precisely adjusts the fuel mixture and delivers the best possible efficiency at any speed. Verado V8 outboards are calibrated to deliver full performance on 87-octane fuel.

SMOOTH AND QUIET

250hp and 300hp Verado deliver class-leading smooth and quiet performance. The next-generation Advanced MidSection (AMS) moves engine mounts aft and outward to virtually eliminate vibration. Engine noise is minimized by a tuned multi-chamber air intake, fuel-injector covers that decrease high-frequency noise, and a highly engineered cowl sealing system.





EFFORTLESS OPERATION

Verado comes standard with SmartCraft® Digital Throttle & Shift (DTS) for ultra-smooth shifting, instantaneous throttle response, as well as electro-hydraulic, automotive-style power steering that provides precision handling.

ADVANCED SOUND CONTROL

You can customize the exhaust tone of a V8 Verado outboard with industry-exclusive Advanced Sound Control. The dual muffler system allows you to toggle between an ultra-quiet mode and a deeper, sportier tone.

ADAPTIVE SPEED CONTROL

Whether you're heading up a swell or into a tight turn, Adaptive Speed Control on V8 Verado outboards automatically maintains the set rpm even as load or conditions change. That means you make far fewer throttle adjustments.

EXTRA CHARGING POWER

A class-leading 115-amp alternator helps V8 Verado outboards keep batteries charged and ready on boats rigged with power-draining accessories. The Idle Charge battery-management system automatically increases idle rpm to boost alternator output and recharge low batteries to the proper level.

JOYSTICK PILOTING FOR OUTBOARDS

Mercury Verado outboards on multi-engine rigs equipped with Joystick Piloting for Outboards offer fingertip control of throttle, shift and steering, so you can dock precisely, safely and with confidence. Move sideways, diagonally or spin the boat on its own axis with total control in wind or current.





INDUSTRY-LEADING

CORROSION RESISTANCE

Not only are Verado outboards designed and built to withstand the rigors of saltwater operation, they're backed by a three-year anti-corrosion warranty – a significant advantage over competitors' products.

THREE **3** YEAR
CORROSION
WARRANTY

POP THE TOP

V8 Verado features a top cowl service door that enables easy engine-oil checks and fills. A single push opens the watertight door for access to the dipstick, service decal, and carrying handle.



KEEP IT FRESH

A convenient, easily accessed cowl-mounted freshwater flush system allows periodic removal of salt from internal water passages.



COLOR CHOICES

Three shades of white – Cold Fusion White, Warm Fusion White and Pearl Fusion White – and traditional Phantom Black are available on Mercury Verado outboards.



Phantom Black



Warm Fusion White



Pearl Fusion White



Cold Fusion White



Phantom Black



Pearl Fusion White



Warm Fusion White



Cold Fusion White





350 / 400 VERADO

Horsepower	350	400
WOT RPM	5800-6400	6200-6800
Engine Type	Inline-6	Inline-6
Displacement	158.5 cu in (2.6L)	158.5 cu in (2.6L)
Induction	Supercharged w/charge air cooling, 24-valve, DOHC	Supercharged w/charge air cooling, 24-valve, DOHC
Starting	SmartStart electric	SmartStart electric
Gear Ratio	5.44 in (1.75:1) HD	5.44 in (1.75:1) HD
Alternator	70 amp (882 watt)	70 amp (882 watt)
Trim System	Power trim and tilt	Power trim and tilt
Dry Weight*	668lbs (303kg)	668lbs (303kg)
Steering	Electro-hydraulic power steering; JPO (optional)	Electro-hydraulic power steering; JPO (optional)
Shaft Length	20in (508mm) 25in (635mm) 30in (762mm)	20in (508mm) 25in (635mm) 30in (762mm)



250 / 300 VERADO

Horsepower	250	300
WOT RPM	5200-6000	5200-6000
Engine Type	V8	V8
Displacement	279 cu in (4.6L)	279 cu in (4.6L)
Induction	32-valve DOHC	32-valve DOHC
Starting	SmartStart electric	SmartStart electric
Gear Ratio	1.85:1	1.85:1 or 1.75:1
Alternator	115 amp (1449 watt)	115 amp (1449 watt)
Trim System	Power trim and tilt	Power trim and tilt
Dry Weight*	600lbs (272kg)	600lbs (272kg)
Steering	Electro-hydraulic power steering; JPO (optional)	Electro-hydraulic power steering; JPO (optional)
Shaft Length	20in (508mm) 25in (635mm) 30in (762mm)	20in (508mm) 25in (635mm) 30in (762mm)



Active Trim

Active Trim makes boating easier and more enjoyable by automatically trimming outboard and sterndrive engines. Active Trim simplifies boat operation while improving engine performance and decreasing fuel costs.

Active Trim is compatible with all current SmartCraft-capable Mercury outboards (40hp and above).



VesselView Mobile™

VesselView Mobile allows boaters to use a mobile device (smartphone or tablet) to connect with their Mercury outboard or sterndrive engine(s). The plug-and-play module connects to your device via Bluetooth, providing quick, convenient access to your engine's data.

VesselView Mobile is compatible with all SmartCraft-capable Mercury outboards (2004 and newer, 40hp and above).



Factory-backed

Every Mercury Verado comes with class-leading corrosion protection and an industry-exclusive three-year limited corrosion warranty.

Digital Throttle & Shift

Verado comes standard with SmartCraft Digital Throttle & Shift (DTS) for ultra-smooth shifting, instantaneous throttle response, as well as electro-hydraulic, automotive-style power steering that provides precision handling.

Standard on 250, 300, 350hp and 400hp Verado outboards.



Joystick Piloting


Joystick Piloting for Outboards – designed for dual, triple and quad Verado-powered vessels and personalized for each boat model – was the industry's first joystick system for outboards, and it remains the best-selling marine joystick system.

Optional on 250, 300, 350hp and 400hp Verado outboards.



POWER YOUR ADVENTURE. POWER YOUR FUN.

FOURSTROKE



Backed by decades of marine power innovation and product leadership, **Mercury FourStroke outboards** deliver legendary performance and forward-thinking technology. Mercury's larger FourStroke outboards – V8, V6 and four-cylinder – are built to boldly go the distance on any body of water and on a wide variety of boats.



Mercury's mid-range and smaller FourStroke outboards are engineered to deliver amazing performance in a package that's light and efficient. With innovative designs and advanced technology, these compact and versatile Mercury outboards are quiet, responsive and reliable in the shallows and on open water.





175 - 300 FOURSTROKE

AWESOME BOATING

The new Mercury FourStrokes are precision engineered with advanced technology to optimize all aspects of performance and reliability. The robust V8 4.6-liter and V6 3.4-liter engines deliver superior hole shot, top speed and fuel efficiency. These new FourStrokes also provide proven dampening of sound and vibration for a superior boating experience.





GO FARTHER

Advanced Range Optimization (ARO) calibration utilizes closed-loop fuel control to precisely adjust the fuel mixture and deliver the best possible efficiency on 87-octane fuel for convenience and savings.

LIGHTER BY DESIGN

Ounce by ounce, Mercury engineers cut pounds from the new Mercury FourStroke outboards, resulting in each engine being the lightest in its respective class by at least 10 pounds.

225HP FOURSTROKE IS NEARLY

60^{lbs}
LIGHTER
THAN OTHER 225HP OUTBOARDS





ADAPTIVE SPEED CONTROL

ASC allows boaters to maintain engine speed (rpm) regardless of load or condition changes – such as rough water, tight turns, tow sports and lower speeds on plane – without having to frequently adjust throttle position, a first for the outboard industry.

IDLE CHARGE

Idle Charge battery-management prevents boaters from draining their batteries while operating multiple electronic devices. When battery voltage is reduced, the engine will automatically increase idle rpm to boost alternator output and recharge low batteries to the proper level.

TOP COWL SERVICE DOOR

For easy and simple engine oil checks and oil fills, just pop open the new Service Door on top of the cowl. A single push opens the watertight door for access to the dipstick, service decal, and carrying handle.



GREAT FOR REPOWER

The V8 and V6 FourStrokes mount on 26-inch centers, which helps them fit a broader range of transoms – ideal for simple, seamless repower applications. Available with mechanical or digital controls, boaters can also choose between hydraulic (standard) or power steering (optional).

150 FOURSTROKE

STRONGER. LIGHTER. DURABLE.

Generous 3.0-liter displacement delivers reliable torque you'll feel across the range on a wide range of boat types – from pontoons to center consoles – and this is still the lightest four-stroke outboard in its class. Looking to repower? The compact, lightweight design fits most transoms, including those with narrow engine wells and tight motor spacing.





EASY TO MAINTAIN

Do it yourself. The no-spill oil-change system, an easy-access fuel filter and a lifetime maintenance-free valve train make the Mercury 150 FourStroke the easiest-to-maintain 150hp four-stroke outboard on the market. Scan a QR code under the cowl to link with step-by-step video demonstrations.





75 / 90 / 115 FOURSTROKE

MORE TORQUE. MORE POWER.

Less weight – nearly 20 pounds less than its closest four-stroke competitor – and high displacement mean these 2.1-liter FourStroke models generate abundant torque and immediate power. These outboards help boats plane faster, accelerate quicker and provide optimal fuel efficiency at cruising speed.

COMMAND THRUST

The larger Command Thrust gearcase available for 115hp and 90hp outboards, combined with a bigger-diameter, V6-class propeller, can lift a heavy boat onto plane more easily and hold it there at lower speeds without impacting top speed. A left-hand rotation Command Thrust gearcase for the 115hp enables dual engine installations.





SMOOTHER AND QUIETER

The Focused Mount System limits vibration transmitted to the boat, or to a steering tiller. A large muffler and sophisticated cowl design quiet engine noise. Combined, these 2.1-liter FourStroke models are quieter and smoother than any competing outboard on the water – at idle, at cruising speed, and at wide-open throttle.

115HP FOURSTROKE IS NEARLY

*20^{lbs}
LIGHTER*

THAN OTHER 115HP FOUR-STROKES



40 / 50 / 60 FOURSTROKE

WELCOME TO EFFICIENCY

Welcome to turnkey boating. Mercury Electronic Fuel Injection delivers reliable starts, improved fuel efficiency, instant throttle response and protection against low-quality-fuel problems. Enjoy mid-size muscle: A compact, single-overhead-cam design and long piston stroke delivers more low-end torque for excellent acceleration, even when pushing a heavy load.

COMMAND THRUST

Available Command Thrust gearcase for 60 / 50 / 40hp FourStroke models offers more control, improved hole shot and enhanced mid-range power. The combination of a gearcase that sits deeper in the water, a bigger prop with 20 percent more blade surface, and lower gear ratio provide unmatched thrust, maneuverability and boat lift.



THE BIG TILLER

A longer tiller incorporates convenient power trim and ignition switches, the shift lever is close at hand, and an optional digital troll control adjusts engine speed as low as 700 rpm in 10-rpm increments.





HARRIS

Classic 200

MERCURY
50



25 / 30 EFI FOURSTROKE

SEASON TO SEASON

Electronic Fuel Injection plus extra displacement for more low-end torque help these FourStroke models pack a real punch. And they're engineered to deliver reliable performance season after season. For a perfect getaway on the water, you can count on Mercury FourStrokes.





BATTERY-FREE MANUAL STARTS

Reliable starts – cold or hot – with manual or turnkey starting. Every time. Advanced technology makes it possible to manually start the EFI system battery-free, saving weight and space in the boat. Fuel efficiency and throttle response are optimized.

HANDY TILLER

Our tiller design combines steering, throttle, shift and stop in the twist grip for easy one-hand operation. The tiller can be locked in the up position for safe trailering.



15 / 20 EFI FOURSTROKE

PORTABLES WITH MORE

More power. More control. More comfort. The new Mercury 20hp and 15hp FourStroke outboards are designed to improve every minute of your time on the water. A new adjustable tiller is designed for comfortable left- or right-hand operation. Enjoy the convenience of battery-free Electronic Fuel Injection (EFI) and a new twin-cylinder powerhead designed to deliver outstanding power and fuel economy.



AMBIDEXTROUS TILLER

The new award-winning center-mounted tiller provides simple horizontal adjustment and reversible throttle grip rotation for right or left-hand operation. Vertical down-stop is also adjustable, so you can dial in this tiller to fit the boat and the operator's reach and preference. The large shift lever is located forward on the tiller for easy operation, and sets a new standard with more features and functions making boating easier and more comfortable.

LESS WEIGHT, MORE TORQUE

A new low-friction, single overhead-cam powerhead delivers greater torque. Meanwhile, overall weight is decreased by 10 pounds – a significant reduction that makes a big difference on small boats. These are the quickest, fastest and strongest outboards in the category.



15 PROKICKER

BETTER TROLLING

Get all the power you need to control bigger boats. Electronic Fuel Injection enables precise fuel metering for smooth operation all day at the lowest trolling speeds. Standard power tilt adds convenience. Exclusive centering straps, available on tiller handle models, automatically straighten and lock the outboard in place when tilted up to protect the transom bracket.



2.5 - 9.9 FOURSTROKE

BIG FEATURES. SMALL SIZES.

Our smallest FourStroke outboards are ready for big fun or big adventures. Reliability you can count on. Durability you can bank on. Easy starting, intuitive controls and great fuel economy. As compact and lightweight as possible, so they truly are portable. And now we offer a powerful, clean-burning 5hp Propane FourStroke.



POWERFUL, CONVENIENT AND ECO-FRIENDLY

Mercury's all-new 5hp Propane FourStroke outboard delivers more convenience and less hassle. Now you can power your boat with the same propane used for your grill, eliminating the need to haul gasoline. The 5hp Propane FourStroke with a large 123cc displacement offers best-in-class power by delivering a true 5hp. There's also a Sail Power model that features a battery-charging alternator and more thrust to control larger boats.



COMMAND THRUST

Move heavier boats with more control. The Command Thrust gearcase available for 9.9hp FourStroke models offers a deeper gearcase, 22 percent more prop blade area and a 2.42:1 gear ratio for better boat control while fishing. An oversized anti-ventilation plate prevents air from being drawn into the prop, which increases efficiency.

9.9 PROKICKER

ULTIMATE CONTROL

Designed as the ultimate trolling auxiliary with a Command Thrust gearcase and a four-blade, high-thrust propeller matched to a 2.42:1 gear ratio. Standard power tilt adds convenience. Exclusive centering straps, available on tiller handle models, automatically straighten and lock the outboard in place when tilted up to protect the transom bracket during high-speed runs and trailering.





2.5 - 6 **FOURSTROKE**

Horsepower	2.5	3.5	4	5	5 Propane	6
WOT RPM	4500-5500	5000-6000	4500-5500	4500-5500	5000-6000	5000-6000
Engine Type	1 cylinder	1 cylinder	1 cylinder	1 cylinder	1 cylinder	1 cylinder
Displacement	5.2 cu in [85cc]	5.2 cu in [85cc]	7.5 cu in [123cc]	7.5 cu in [123cc]	7.5 cu in [123cc]	7.5 cu in [123cc]
Induction	2-valve, pushrod	2-valve, pushrod	2-valve, pushrod	2-valve, pushrod	2-valve, pushrod	2-valve, pushrod
Starting	Manual	Manual	Manual	Manual	Manual	Manual
Gear Ratio	2.15:1	2.15:1	2.15:1	2.15:1	2.15:1	2.15:1
Alternator	N/A	N/A	N/A	Sailpower 4 amp (50 watt) lighting and charging	Sailpower 4 amp (50 watt) lighting and charging	N/A
Trim System	4 position	4 position	6 position w/ shallow water drive	6 position w/ shallow water drive	6 position w/ shallow water drive	6 position w/ shallow water drive
Dry Weight*	41lbs [18 kg]	41lbs [18 kg]	57lbs [26kg]	57lbs [26kg]	59lbs [27kg]	57lbs [26kg]
Steering	360° tiller	360° tiller	Tiller	Tiller	Tiller	Tiller
Shaft Length	15 in [381mm]	15 in [381mm] 20 in [508mm]	15 in [381mm] 20 in [508mm]	15 in [381mm] 20 in [508mm] 25 in [635mm]	15 in [381mm] 20 in [508mm] 25 in [635mm]	15 in [381mm] 20 in [508mm]

8 / 9.9 **FOURSTROKE**

Horsepower	8	9.9	9.9 CT	9.9 ProKicker
WOT RPM	5000-6000	5000-6000	5000-6000	5000-6000
Engine Type	Inline-2	Inline-2	Inline-2	Inline-2
Displacement	12.8 cu in [208cc]	12.8 cu in [208cc]	12.8 cu in [208cc]	12.8 cu in [208cc]
Induction	4-valve, SOHC	4-valve, SOHC	4-valve, SOHC	4-valve, SOHC
Starting	Electric or manual	Electric or manual	Electric or manual	Electric or manual
Gear Ratio	2.08:1	2.08:1	2.42:1	2.42:1
Alternator	6 amp (76 watt) on electric-start models	6 amp (76 watt) on electric-start models	6 amp (76 watt) on electric-start models	6 amp (76 watt) on electric-start models
Trim System	Ratcheting w/ shallow water drive	Ratcheting w/ shallow water drive	Ratcheting w/ shallow water drive	Power tilt
Dry Weight*	84lbs [38kg]	84lbs [38kg]	96lbs [44kg]	108lbs [49kg]
Steering	Tiller	Remote or tiller	Remote or tiller	Remote or tiller
Shaft Length	15 in [381mm] 20 in [508mm]	15 in [381mm] 20 in [508mm] 25 in [635mm]	20 in [508mm] 25 in [635mm]	20 in [508mm] 25 in [635mm]



15 / 20 **FOURSTROKE**

Horsepower	15 EFI	15 EFI ProKicker	20 EFI
WOT RPM	5700-6200	5700-6200	5700-6200
Engine Type	Inline-2	Inline-2	Inline-2
Displacement	20.3 cu in [333cc]	20.3 cu in [333cc]	20.3 cu in [333cc]
Induction	4-Valve, SOHC	4-Valve, SOHC	4-Valve, SOHC
Starting	Manual or electric	Electric w/manual backup	Manual or electric
Gear Ratio	2.15:1	2.15:1	2.15:1
Alternator	12 amp (145 watt) electric-start models	12 amp (145 watt) electric-start models	12 amp (145 watt) electric-start models
Trim System	6 manual or power tilt	Power tilt	6 manual or power tilt
Dry Weight*	99lbs [45kg]	122lbs [55kgs]	99lbs [45kg]
Steering	Tiller or remote	Tiller or remote	Tiller or remote
Shaft Length	15in [381mm] 20in [508mm]	20in [508mm] 25in [635mm]	15in [381mm] 20in [508mm]



25 / 30 **FOURSTROKE**

Horsepower	25 EFI	30 EFI
WOT RPM	5000-6000	5250-6250
Engine Type	Inline-3	Inline-3
Displacement	32.1 cu in [526cc]	32.1 cu in [526cc]
Induction	6-valve, SOHC	6-valve, SOHC
Starting	Electric (turn-key) or manual	Electric (turn-key) or manual
Gear Ratio	1.92:1	1.92:1
Alternator	15 amp (186 watt)	15 amp (186 watt)
Trim System	Manual or power trim	Gas assist or power trim
Dry Weight*	157lbs [71kg]	172lbs [78kg]
Steering	Remote or tiller	Remote or tiller
Shaft Length	15 in [381mm] 20 in [508mm]	15 in [381mm] 20 in [508mm]

*Dry weight specification is for the lightest-version model. Note: Due to our constant efforts to offer the finest products available, we reserve the right to change specifications without notice. Visit MercuryMarine.com or your Mercury Authorized Dealer for more engine specs and test results.



40 / 50 / 60 **FOURSTROKE**

Horsepower	40 Carburetor	40	40 CT	50	50 CT	60	60 CT
WOT RPM	5500-6000	5500-6000	5500-6000	5000-6000	5500-6000	5500-6000	5500-6000
Engine Type	Inline-3	Inline-3	Inline-4	Inline-4	Inline-4	Inline-4	Inline-4
Displacement	45.6 cu in (747cc)	45.6 cu in (747cc)	60.8 cu in (995cc)	60.8 cu in (995cc)	60.8 cu in (995cc)	60.8 cu in (995cc)	60.8 cu in (995cc)
Induction	6-valve, SOHC	6-valve, SOHC	8-valve, SOHC	8-valve, SOHC	8-valve, SOHC	8-valve, SOHC	8-valve, SOHC
Starting	Manual	Electric (turn-key)	Electric (turn-key)	Electric (turn-key)	Electric (turn-key)	Electric (turn-key)	Electric (turn-key)
Gear Ratio	2.00:1	2.00:1	2.33:1	1.83:1	2.33:1	1.83:1	2.33:1
Alternator	18 amp (226 watt)	18 amp (226 watt)	18 amp (226 watt)	18 amp (226 watt)	18 amp (226 watt)	18 amp (226 watt)	18 amp (226 watt)
Trim System	Gas assist trim	Gas assist or power trim and tilt	Power trim and tilt	Power trim and tilt	Power trim and tilt	Power trim and tilt	Power trim and tilt
Dry Weight*	204lbs (93kg)	216lbs (98kg)	260lbs (118kg)	247lbs (112kg)	260lbs (118kg)	247lbs (112kg)	260lbs (118kg)
Steering	Tiller	Remote or tiller	Remote or tiller	Remote or tiller	Remote or Big tiller	Remote or tiller	Remote or Big tiller
Shaft Length	15 in (381mm) 20 in (508mm)	15 in (381mm) 20 in (508mm)	20 in (508mm)	20 in (508mm)	20 in (508mm)	20 in (508mm)	20 in (508mm) 25 in (635mm)



75 / 90 / 115 **FOURSTROKE**

Horsepower	75	90	90 CT	115	115 CT
WOT RPM	4500-5500	5000-6000	5000-6000	5000-6000	5000-6000
Engine Type	Inline-4	Inline-4	Inline-4	Inline-4	Inline-4
Displacement	126 cu in (2.1L)	126 cu in (2.1L)	126 cu in (2.1L)	126 cu in (2.1L)	126 cu in (2.1L)
Induction	8-valve, SOHC	8-valve, SOHC	8-valve, SOHC	8-valve, SOHC	8-valve, SOHC
Starting	SmartStart electric	SmartStart electric	SmartStart electric	SmartStart electric	SmartStart electric
Gear Ratio	2.07:1	2.07:1	2.38:1	2.07:1	2.38:1
Alternator	35 amp (441 watt)	35 amp (441 watt)	35 amp (441 watt)	35 amp (441 watt)	35 amp (441 watt)
Trim System	Power trim and tilt	Power trim and tilt	Power trim and tilt	Power trim and tilt	Power trim and tilt
Dry Weight*	359lbs (163kg)	359lbs (163kg)	363lbs (165kg)	359lbs (163kg)	363lbs (165kg)
Steering	Remote or Big Tiller	Remote or Big Tiller	Remote or Big Tiller	Remote or Big Tiller	Remote or Big Tiller
Shaft Length	20 in (508mm)	20 in (508mm) 25 in (635mm)	20 in (508mm) 25 in (635mm)	20 in (508mm) 25 in (635mm)	20 in (508mm) 25 in (635mm)



FACTORY-BACKED

Every Mercury FourStroke comes with class-leading corrosion protection and an industry-exclusive three-year limited corrosion warranty.

*Dry weight specification is for the lightest-version model. Note: Due to our constant efforts to offer the finest products available, we reserve the right to change specifications without notice. Visit MercuryMarine.com or your Mercury Authorized Dealer for more engine specs and test results.



150 FOURSTROKE

Horsepower	150
WOT RPM	5000-5800
Engine Type	Inline-4
Displacement	183 cu. in. (3.0L)
Induction	8-valves, SOHC
Starting	SmartStart Electric
Gear Ratio	1.92:1
Alternator	60 amp (756 watt)
Trim System	Power trim and tilt
Dry Weight*	455lbs (206kg)
Steering	Remote or Big Tiller
Shaft Length	20in (508mm) 25in (635mm)



Factory-backed

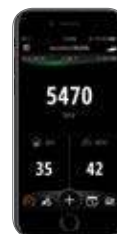
Every Mercury FourStroke comes with class-leading corrosion protection and an industry-exclusive three-year limited corrosion warranty.



Active Trim

Active Trim makes boating easier and more enjoyable by automatically trimming outboard and sterndrive engines. Active Trim simplifies boat operation while improving engine performance and decreasing fuel costs.

Active Trim is compatible with all current SmartCraft-capable Mercury outboards (40hp and above).



VesselView Mobile

VesselView Mobile allows boaters to use a mobile device (smartphone or tablet) to connect with their Mercury outboard or sterndrive engine(s). The plug-and-play module connects to your device via Bluetooth, providing quick, convenient access to your engine's data.

VesselView Mobile is compatible with all SmartCraft-capable Mercury outboards (2004 and newer, 40hp and above).



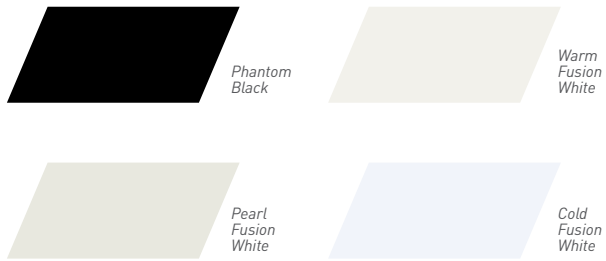
175 - 300 FOURSTROKE

Horsepower	175	200	225	250	300
WOT RPM	5000-5800	5000-5800	5200-6000	5200-6000	5200-6000
Engine Type	V6	V6	V6	V8	V8
Displacement	209 cu. in. (3.4L)	209 cu. in. (3.4L)	209 cu. in. (3.4L)	279 cu. in. (4.6L)	279 cu. in. (4.6L)
Induction	24-valve DOHC	24-valve DOHC	24-valve DOHC	32-valve DOHC	32-valve DOHC
Starting	SmartStart electric	SmartStart electric	SmartStart electric	SmartStart electric	SmartStart electric
Gear Ratio	1.85:1	1.85:1	1.85:1	1.75:1	1.75:1
Alternator	85 amp (1071 watt)	85 amp (1071 watt)	85 amp (1071 watt)	85 amp (1071 watt)	85 amp (1071 watt)
Trim System	Power trim and tilt	Power trim and tilt	Power trim and tilt	Power trim and tilt	Power trim and tilt
Dry Weight*	475lbs (215kg)	475lbs (215kg)	475lbs (215kg)	527lbs (239kg)	527lbs (239kg)
Steering	Hydraulic (standard) Power (option) Big Tiller (option)	Hydraulic (standard) Power (option) Big Tiller (option)	Hydraulic (standard) Power (option) Big Tiller (option)	Hydraulic (standard) Power (option) Big Tiller (option)	Hydraulic (standard) Power (option)
Shaft Length	20in (508mm) 25in (635mm)	20in (508mm) 25in (635mm)	20in (508mm) 25in (635mm) 30in (762mm)	20in (508mm) 25in (635mm) 30in (762mm)	20in (508mm) 25in (635mm)

*Dry weight specification is for the lightest-version model. Note: Due to our constant efforts to offer the finest products available, we reserve the right to change specifications without notice. Visit MercuryMarine.com or your Mercury Authorized Dealer for more engine specs and test results.

COLOR CHOICES

Three shades of white – Cold Fusion White, Warm Fusion White and Pearl Fusion White – and traditional Phantom Black are available on 200 though 300hp Mercury FourStroke outboards.



Phantom Black



Pearl Fusion White



Warm Fusion White



Cold Fusion White



BUILT FOR SPEED

PRO XS[®]





Mercury Pro XS outboards – ranging from 115hp to 300hp – are engineered for the most-demanding people on the water – anglers battling on the highly competitive tournament trail and powerboaters who simply crave speed and acceleration. Mercury developed exclusive components and tuning to extract every ounce of performance from each Pro XS model to get you to the fish first, then back to the weigh-in on time. Or maybe just to get you across the lake before everyone else.



175 - 300 PRO XS

TAKE IT TO THE LIMIT

No outboard gets from zero to wide-open quicker than a Mercury Pro XS, now with V8 4.6-liter and V6 3.4-liter muscle. This is performance that will rocket your rig out of the hole and to the next hot spot in record time. These Pro XS models feature generous displacement in a performance-tuned powerhead with a deep-breathing double-overhead-cam design and long-runner intake tract that delivers instant throttle response at any speed.





*WE'VE EVEN TUNED THE
V8 EXHAUST TONE TO*

*STIR
YOUR
SOUL*



TOURNAMENT-WINNING ACCELERATION

More displacement delivers more torque, and new Transient Spark technology optimizes spark timing to boost that torque during hole shot. A Torque Master gearcase (featured on select V8 models) with a 1.75:1 gear ratio and a robust 1.25-inch-diameter prop shaft is designed for semi-surfacing, high-speed applications. Specific performance calibration takes rpm to 6200 at wide-open throttle for more flexible prop selection.



SQUEEZING SPEED FROM FUEL

Mercury V8 and V6 Pro XS models transform every drop of fuel into performance to deliver excellent economy at cruising speed and wide-open throttle. Advanced Range Optimization (ARO) calibration utilizes closed-loop fuel control to precisely adjust the fuel mixture and deliver the best possible efficiency. Experience peak performance and reliability on regular unleaded 87-octane fuel.



THE NEW
V8 PRO XS
WEIGHS JUST
505 lbs

Matching the weight of current lightest-in-class engine while packing two additional cylinders and greater displacement.



NEVER RUN OUT OF JUICE

A powerful alternator provides net charging output of 20 amps at idle and 85 amps total at wide open throttle. Additionally, Idle Charge battery-management technology automatically increases idle rpm to boost alternator output and recharge low batteries to the proper level.



THE COWL STAYS ON

For easy oil checks and fills just pop open the new watertight Service Door on top of the cowl. Even smarter, at start-up the optional electronic oil-level sensor automatically alerts you to low oil level.





115 / 150 PRO XS

TUNED TO PERFORM

On freshwater or saltwater – compact bass rigs or flats skiffs, pontoons or multi-species boats – four-cylinder Mercury Pro XS models are tuned to take mid-size boats to the limit. Engine controls are calibrated for stronger hole shot and higher rpm. Stiffer high-performance motor mounts on the 150 deliver better high-speed handling. It's the look and performance of a champion, with bold Pro XS graphics.



BEST-IN-CLASS ACCELERATION

The lowest weight and highest displacement in the category contribute to unmatched hole shot on a wide variety of boats. The 150 Pro XS features new Transient Spark technology to optimize spark timing and boost hole shot torque, as well as a higher gear ratio that transmits more torque to the prop shaft.



ENGINEERED TO PERFORM

Higher wide-open-throttle rpm range permits use of a wider selection of prop pitches, so you can prop for hole shot or top speed. The 150 Pro XS features a proven, performance-inspired 4.8-inch diameter gearcase with front water pickups and a 2.08:1 gear ratio for true dialed-in performance.



SMART CHARGING

The best-in-class alternator output on the 150 Pro XS keeps up with marine electronics and accessories. New Idle Charge low-voltage battery-management automatically boosts idle speed and alternator output to recharge boat batteries to the proper level.



COMMAND MORE

The 115 Pro XS is available with our exclusive Command Thrust gearcase, which features a larger diameter torpedo and prop and creates a bigger footprint in the water. This offers boaters more leverage to control their boats and greater ability to get heavily loaded boats on plane and keep them there.



115 PRO XS

Horsepower	115	115 CT
WOT RPM	5300-6300	5300-6300
Engine Type	Inline-4	Inline-4
Displacement	126 cu in (2.1L)	126 cu in (2.1L)
Induction	8-valve, SOHC	8-valve, SOHC
Starting	SmartStart electric	SmartStart electric
Gear Ratio	2.07:1	2.38:1
Alternator	35 amp (441 watt)	35 amp (441 watt)
Trim System	Power trim and tilt	Power trim and tilt
Dry Weight*	359lbs (163kg)	363lbs (165kg)
Steering	Remote or Big Tiller	Remote or Big Tiller
Shaft Length	20 in (508mm) 25 in (635mm)	20 in (508mm) 25 in (635mm)



150 PRO XS

Horsepower	150
WOT RPM	5200-6000
Engine Type	Inline-4
Displacement	183 cu. in. (3.0L)
Induction	8-valves, SOHC
Starting	SmartStart electric
Gear Ratio	2.08:1
Alternator	60 amp (756 watt)
Trim System	Power trim and tilt
Dry Weight*	456lbs (207kg)
Steering	Remote or Big Tiller
Shaft Length	20in (508mm) 25in (635mm)

Active Trim



Active Trim makes boating easier and more enjoyable by automatically trimming outboard and sterndrive engines. Active Trim simplifies boat operation while improving engine performance and decreasing fuel costs.

Active Trim is compatible with all current SmartCraft-capable Mercury outboards (40hp and above).

VesselView Mobile



VesselView Mobile allows boaters to use a mobile device (smartphone or tablet) to connect with their Mercury outboard or sterndrive engine(s). The plug-and-play module connects to your device via Bluetooth, providing quick, convenient access to your engine's data.

VesselView Mobile is compatible with all SmartCraft-capable Mercury outboards (2004 and newer, 40hp and above).

VesselView Link

VesselView Link connects all features offered by SmartCraft to compatible Lowrance and Simrad displays, placing the complete VesselView information suite and control capability on your main helm display.

VesselView Link is compatible with all SmartCraft-capable Mercury outboards (2004 and newer, 40hp and above).



DTS Hot Foot

A Digital Throttle & Shift (DTS) Hot Foot pedal allows you to keep both hands on the wheel during high-speed runs. DTS provides precise handling, seamlessly connects with compatible displays, and delivers instant response and total control with no hesitation.

DTS Hot Foot pedal is compatible with 200 - 300hp Pro XS outboards.





175 - 300 PRO XS

	175	200	225	250	300
Horsepower	175	200	225	250	300
WOT RPM	5400-6000	5600-6200	5600-6200	5600-6200	5600-6200
Engine Type	V6	V8	V8	V8	V8
Displacement	209 cu. in. (3.4L)	279 cu. in. (4.6L)	279 cu. in. (4.6L)	279 cu. in. (4.6L)	279 cu. in. (4.6L)
Induction	24-valve DOHC	32-valve DOHC	32-valve DOHC	32-valve DOHC	32-valve DOHC
Starting	SmartStart electric	SmartStart electric	SmartStart electric	SmartStart electric	SmartStart electric
Gear Ratio	1.85:1	1.75:1 / 1.85:1	1.75:1	1.75:1	1.75:1
Alternator	85 amp (1071 watt)	85 amp (1071 watt)	85 amp (1071 watt)	85 amp (1071 watt)	85 amp (1071 watt)
Trim System	Power trim and tilt	Power trim and tilt	Power trim and tilt	Power trim and tilt	Power trim and tilt
Dry Weight*	470lbs (213kg)	505lbs (229kg)	505lbs (229kg)	505lbs (229kg)	505lbs (229kg)
Steering	Hydraulic (standard) Power (option) Big Tiller (option)	Hydraulic (standard) Power (option) Big Tiller (option)	Hydraulic (standard) Power (option) Big Tiller (option)	Hydraulic (standard) Power (option) Big Tiller (option)	Hydraulic (standard) Power (option)
Shaft Length	20in (508mm) 25in (635mm)	20in (508mm) 25in (635mm)	20in (508mm) 25in (635mm)	20in (508mm) 25in (635mm)	20in (508mm) 25in (635mm)

*Dry weight specification is for the lightest-version model. Note: Due to our constant efforts to offer the finest products available, we reserve the right to change specifications without notice. Visit MercuryMarine.com or your Mercury Authorized Dealer for more engine specs and test results.



WORKS HARD ALL DAY

*SEA PRO*TM





When the world dishes out long hours, tough conditions, and plenty of work, **Mercury SeaPro** outboards clock in on time every day, ready to work as hard as you do. When you make your living on the water – or you simply demand a lot from your outboard – you need an ultra-reliable partner. SeaPro is engineered to deliver years of trouble-free performance, with heavy-duty components to cope with the demands of commercial operation. SeaPro is easy to maintain and remarkably efficient to operate.



REDUCE YOUR FUEL COST

Advanced Range Optimization (ARO) calibration utilizes closed-loop fuel control to precisely adjust the fuel mixture and deliver the best possible efficiency.

200-300 **SEAPRO**

The new Mercury V8 and V6 SeaPro outboard models bring more of everything to the job – more displacement, more power, more efficiency and more durability. The impressive muscle of our new V8 4.6-liter and V6 3.4-liter powerheads is specifically designed for commercial duty and delivers outstanding fuel economy. The combination of ample torque and low weight makes these engines ideal for heavily loaded boats.



LIGHT AND COMPACT

Mercury engineers strategically trimmed weight to produce some of the lightest engines in their class – by up to 30 pounds. V8 and V6 SeaPro models mount on 26-inch centers and are ideal for a broad range of applications, including simple, seamless repower rigging.



STAY READY

The new 200-300hp SeaPro outboards feature a high-capacity alternator that cranks out a robust 20 amps of charging power at idle.



SMOOTH OPERATOR

300hp AMS models are available with joystick piloting, electro-hydraulic power steering, and Mercury's exclusive Advanced MidSection (AMS). The Advanced MidSection virtually eliminates vibration from being transmitted to the boat, while joystick piloting provides maximum levels of control and maneuverability.



MAXIMUM DURABILITY

V8 and V6 SeaPro outboards feature a heavy-duty gearcase that is validated at three times the lifespan of a recreational gearcase and slips easily through the water, decreasing the workload on the engine. Commercial calibration allows the engine to reach maximum torque well below peak rpm – more power with less stress on the motor.

TOP COWL SERVICE DOOR

The Top Cowl Service Door, an industry-exclusive feature, simplifies routine maintenance with easy oil checks and oil fills without removing the cowl. A single push opens the watertight door for access to the dipstick, service decal, and carrying handle.



EASY TO MAINTAIN

Hour-based maintenance decal is conveniently located under the cowl, providing a quick overview of routine maintenance intervals. Regular maintenance points are color-coded and accessible by removing the top cowl only.



MADE FOR WORK

The 150 SeaPro is built to deliver loads of torque while still providing superior durability and greater longevity. Its heavy-duty gearcase is validated at three times the lifespan of a recreational gearcase.



75-150 SEAPRO

No family works harder than SeaPro, and Mercury's midrange lineup of 75 through 150hp in-line four-cylinder commercial-grade outboards is ready to go wherever and whenever you are. The rugged and ultra-durable 3.0-liter 150hp and its feisty 2.1-liter brothers deliver great torque for less stress on the powerhead. They're all built to handle the demands and long hours of commercial applications, yet they're light and fuel-efficient.



TOUGH INSIDE AND OUT

The upper motor mounts are designed to be two times stiffer than recreational models to maximize durability. Their longevity makes them ideally suited for the demands and rigors of commercial applications. Mercury's proprietary XK360 low-copper aluminum alloy leads the industry in corrosion resistance.



KEEP DOWNTIME DOWN

Easy-access fuel filter and no-spill oil-change system combine to help keep downtime to a minimum. Hour-based maintenance decal is conveniently located under the cowl, providing a quick overview of routine maintenance intervals.

BIGGER FOOTPRINT

A heavy-duty Command Thrust gearcase on 75-115hp SeaPro outboards permits use of an oversized prop, sits deeper in the water and incorporates a specific gearcase ratio – all designed to improve handling and easily lift heavier boats.



REPOWER WITH SEAPRO

Low weight and compact size make these SeaPro models perfect for repower on older boats not originally designed for the weight of heavier four-stroke outboards. Work smarter with the latest technology, improved fuel economy and greater reliability.





FEROCIOUS BITE

A tough Command Thrust gearcase uses a bigger-diameter prop and sits deeper in less-aerated water for more bite. This – in combination with a 2.33:1 gear ratio that allows the engine to spin up quickly – delivers powerful acceleration and greater boat control.

40 / 60 SEAPRO

Designed to tackle the toughest jobs season after season, the 40 and 60hp SeaPro models are validated to three times the engine life of a recreational engine. A compact, single-overhead-cam design and long piston stroke delivers more low-end torque for stout power, even when pushing a heavy load. Electronic Fuel Injection (EFI) delivers reliable starts, improved fuel efficiency, and protection against problems from poor fuel quality.



COMMERCIAL GRADE

Calibrated for demanding commercial use, the engine reaches maximum torque well below peak rpm – more power with less stress on the motor. The upper motor mounts are designed to be two times stiffer than recreational models to maximize durability, and commercial-grade materials and coatings are used top to bottom for superior corrosion resistance in saltwater.



NO-MESS MAINTENANCE

Clear information for routine maintenance is provided on a decal under the cowl, with a QR code for smartphones that links to additional instruction. A new drain hose removes oil from the filter for no-mess maintenance, and there's a convenient freshwater flush fitting.

15 SEAPRO

The rugged new 15hp SeaPro is designed and built to take on big jobs in smaller boats. New twin-cylinder powerhead with Electronic Fuel Injection (EFI) delivers quick starts and outstanding torque to move heavy loads.



AMBIDEXTROUS TILLER

The new center-mounted tiller features simple horizontal adjustment and reversible throttle grip rotation for left- or right-hand operation, and an auto-return spring takes the throttle to idle when the grip is released.





15 SEAPRO

Horsepower	15 EFI
WOT RPM	4500-5500
Engine Type	Inline-2
Displacement	20.3 cu in (333cc)
Induction	4-Valve, SOHC
Starting	Manual
Gear Ratio	2.15:1
Alternator	12 amp (145 watt) w/ electric start kit
Trim System	6 manual
Dry Weight*	105lbs (47.5kgs)
Steering	Tiller or remote
Shaft Length	15in (381mm) 20in (508mm)



40 / 60 SEAPRO

Horsepower	40	60
WOT RPM	4500-5500	4500-5500
Engine Type	Inline-4	Inline-4
Displacement	60.8 cu in (995cc)	60.8 cu in (995cc)
Induction	8-valve, SOHC	8-valve, SOHC
Starting	Electric (turn-key)	Electric (turn-key)
Gear Ratio	2.33:1	2.33:1
Alternator	18 amp (226 watt)	18 amp (226 watt)
Trim System	Gas assist or power trim and tilt	Gas assist or power trim and tilt
Dry Weight*	260lbs (118kg)	260lbs (118kg)
Steering	Remote or Big Tiller	Remote or Big Tiller
Shaft Length	20in (508mm) 22.5in (571.5mm) 25in (635mm)	20in (508mm) 22.5in (571.5mm) 25in (635mm)



FACTORY-BACKED

Every Mercury SeaPro comes with class-leading corrosion protection and an industry-exclusive three-year limited corrosion warranty.



Active Trim

Active Trim makes boating easier and more enjoyable by automatically trimming outboard and sterndrive engines. Active Trim simplifies boat operation while improving engine performance and decreasing fuel costs.

Active Trim is compatible with all current SmartCraft-capable Mercury outboards (40hp and above).



VesselView Mobile

VesselView Mobile allows boaters to use a mobile device (smartphone or tablet) to connect with their Mercury outboard or sterndrive engine(s). The plug-and-play module connects to your device via Bluetooth, providing quick, convenient access to your engine's data.

VesselView Mobile is compatible with all SmartCraft-capable Mercury outboards (2004 and newer, 40hp and above).

Joystick Piloting

300hp SeaPro AMS outboards are available with Joystick Piloting for Outboards. Joystick Piloting is designed for dual, triple and quad SeaPro-powered vessels and personalized for each boat model. Mercury Joystick Piloting was the industry's first joystick system for outboards, and it remains the best-selling marine joystick system.

Joystick Piloting is optional on 300hp SeaPro AMS outboards.



Big Tiller

Optional Big Tiller offers optimal control for 40 - 300hp SeaPro outboards. Longer tiller grip incorporates a convenient power trim switch, shift lever is close at hand, and an optional digital troll control adjusts engine speed in 10-rpm increments.

Big Tiller is available on 40 - 300hp SeaPro outboards.





75 – 115 SEAPRO

Horsepower	75	90	115
WOT RPM	5000-5500	5000-5500	5000-5500
Engine Type	Inline-4	Inline-4	Inline-4
Displacement	126 cu in (2.1L)	126 cu in (2.1L)	126 cu in (2.1L)
Induction	8-valve, SOHC	8-valve, SOHC	8-valve, SOHC
Starting	SmartStart electric	SmartStart electric	SmartStart electric
Gear Ratio	2.38:1	2.38:1	2.38:1
Alternator	35 amp (441 watt)	35 amp (441 watt)	35 amp (441 watt)
Trim System	Power trim and tilt	Power trim and tilt	Power trim and tilt
Dry Weight*	363lbs (165kg)	363lbs (165kg)	363lbs (165kg)
Steering	Remote or Big Tiller	Remote or Big Tiller	Remote or Big Tiller
Shaft Length	20 in (508mm)	20 in (508mm) 25 in (635mm)	20 in (508mm) 25 in (635mm)



150 SEAPRO

Horsepower	150
WOT RPM	4800-5300
Engine Type	I-4
Displacement	183 cu. in. (3.0L)
Induction	8-valve, SOHC
Starting	SmartStart electric
Gear Ratio	1.92:1
Alternator	60 amp (756 watt)
Trim System	Power trim and tilt
Dry Weight*	455lbs (206kg)
Steering	Remote or Big Tiller
Shaft Length	20 in (508mm) 25 in (635mm)



200 – 300 SEAPRO

Horsepower	200	225	250	300	300 AMS
WOT RPM	4600-5400	4800-5600	4800-5600	4800-5600	4800-5600
Engine Type	V6	V8	V8	V8	V8
Displacement	209 cu. in. (3.4L)	279 cu. in. (4.6L)	279 cu. in. (4.6L)	279 cu. in. (4.6L)	279 cu. in. (4.6L)
Induction	24-valve DOHC	32-valve DOHC	32-valve DOHC	32-valve DOHC	32-valve DOHC
Starting	SmartStart Electric	SmartStart Electric	SmartStart Electric	SmartStart Electric	SmartStart Electric
Gear Ratio	1.85:1	1.75:1	1.75:1	1.75:1	1.75:1
Alternator	85 amp (1071 watt)	85 amp (1071 watt)	85 amp (1071 watt)	85 amp (1071 watt)	115 amp (1449 watt)
Trim System	Power trim and tilt	Power trim and tilt	Power trim and tilt	Power trim and tilt	Power trim and tilt
Dry Weight*	483lbs (220kg)	527lbs (239kg)	527lbs (239kg)	527lbs (239kg)	600lbs (272kg)
Steering	Hydraulic (standard) Power (option) Big Tiller (option)	Hydraulic (standard) Power (option) Big Tiller (option)	Hydraulic (standard) Power (option) Big Tiller (option)	Hydraulic (standard) Power (option)	Electro-hydraulic power steering
Shaft Length	20in (508mm) 25in (635mm)	20in (508mm) 25in (635mm) 30in (762mm)	20in (508mm) 25in (635mm) 30in (762mm)	20in (508mm) 25in (635mm) 30in (762mm)	20in (508mm) 25in (635mm) 30in (762mm)

*Dry weight specification is for the lightest-version model. Note: Due to our constant efforts to offer the finest products available, we reserve the right to change specifications without notice. Visit MercuryMarine.com or your Mercury Authorized Dealer for more engine specs and test results.



NOW YOU'RE GETTING SOMEWHERE

OUTBOARD GEARCASES

All that power. It won't get you anywhere without a properly designed gearcase. One that fits your boat and engine properly. Mercury has engineered specialized gearcase options to fit unique boat application and performance needs. Whatever Mercury outboard you're running, rest assured you'll have the perfect performance-matched gearcase that gets the most out of your outboard.

Command Thrust (CT)

The larger Command Thrust “CT” gearcase with a bigger-diameter propeller lifts heavy boats onto plane more easily and holds them there at lower speeds without impacting top speed.

Available on 9.9, 40, 50, 60, 90 and 115hp FourStroke outboards



TorqueMaster

The lightweight TorqueMaster gearcase is designed specifically for performance bass boats with top speeds of up to 80 mph. Its stout 1.25-inch prop shaft can handle the strain of running at an elevated mounting height. Patented front water pickups keep the engine running cool regardless of engine height. A cambered skeg improves handling and drivability.

Standard on 200, 225, 250 and 300hp Pro XS outboards



SeaPro

SeaPro gearcases are engineered to withstand the rigors of commercial operation. Validated at three times the life span of a recreational gearcase. SeaPro gearcases are also designed with easy maintenance in mind – oil can easily be drained from the gear case torpedo.

Standard on all SeaPro outboards



SHALLOW WATER SPECIALISTS

JETS

Mercury Jets are designed to get you through some of the most challenging waters anywhere. Specifically engineered to propel boats in shallow water where traditional outboards are unable to operate, Mercury jets replace the gearcase with a jet pump that sits even with the bottom of the boat and provides you with the ability to go wherever the fish or fowl are. Mercury Jet outboards are also the power of choice for rescue boats, providing a secure environment around the engine. No matter the adventure, a Mercury Jet will get you there.



200 OPTIMAX® SPORTJET®

The V6 SportJet brings a level of lightweight performance to the inboard jet category. Maneuver through the shallows with ease and rely on the power and speed available for all types of boating fun, including tubing and skiing. Our award-winning OptiMax two-stroke Direct Injection technology provides instant turnkey starting, no-smoke operation, outstanding fuel economy and an excellent power-to-weight ratio. It's also easy to use and maintain.

Choose from **three intake grate options** to match your water conditions and intended use: Standard aluminum grate for general use, stainless-grate for gravel bottoms, and the spring-loaded Hydro-Surge grate for automatic weed cleanout from the jet intake.



25-80 FOURSTROKE JET

Tackle your adventure with a Mercury Jet outboard, available in a size to fit almost any boat made for shallow water, including drifters, jons, sleds and shallow-vees. All Mercury Jet outboard models feature an efficient FourStroke powerhead designed to be as light as possible, a key advantage in shallow water situations.

Our **stainless impellers improve** performance and withstand harsh, abrasive debris that can be drawn through the pump, such as sand and shells. That ability adds to long-term durability and reliability.

Horsepower	25 Jet	35 Jet	40 Jet	65 Jet	80 Jet	200 SportJet
WOT RPM	5000-5500	5000-6000	5000-6000	5000-6000	5000-6000	5150-5650
Engine Type	I-3	I-4	I-4	I-4	I-4	V6 (60° vee)
Displacement	32.1 cu in (526cc)	60.8 cu in (995cc)	60.8 cu in (995cc)	126 cu in (2.1L)	126 cu in (2.1L)	153 cu in (2.5L)
Induction	6-valve, SOHC	8-valve, SOHC	8-valve, SOHC	8-valve, SOHC	8-valve, SOHC	2-stage Direct Fuel Injection (DFI)
Starting	Electric (turn-key) or manual	Electric (turn-key)	Electric (turn-key)	SmartStart electric	SmartStart electric	Electric (turn-key)
Gear Ratio	Jet drive	Jet drive	Jet drive	Jet drive	Jet drive	Jet drive
Alternator	15 amp (186 watt)	18 amp (226 watt)	18 amp (226 watt)	35 amp (441 watt)	35 amp (441 watt)	60 amp (756 watt)
Trim System	Gas assist or power trim	Power trim and tilt	Power trim and tilt	Power trim and tilt	Power trim and tilt	N/A
Dry Weight*	186lbs (84kg)	267lbs (121kg)	267lbs (121kg)	378lbs (171kg)	378lbs (171kg)	367lbs (166kg)
Steering	Remote or tiller	Remote or tiller kit	Remote or tiller kit	Remote or Big Tiller kit	Remote or Big Tiller kit	Remote
Shaft Length	Jet drive	Jet drive	Jet drive	Jet drive	Jet drive	Jet drive

*Dry weight specification is for the lightest-version model. Note: Due to our constant efforts to offer the finest products available, we reserve the right to change specifications without notice. Visit MercuryMarine.com or your Mercury Authorized Dealer for more engine specs and test results.



POWER YOUR LIFESTYLE

STERNDRIVES

We build **Mercury MerCruiser® Sterndrive** engines and drives to power your life on the water. Our engines are engineered and built solely for marine duty. At MerCruiser, we build in the level of torque needed to lift a boat smartly on plane, and reliability you can count on year after year.



380 / 430 **STERNDRIVE**

Because we know that sometimes you just need a big block, we build the mighty MerCruiser 8.2L. Nothing matches the pure torque of 8.2 liters of V8 displacement in a powerband we've tuned specifically to move the heaviest boats quickly on plane. Throttle back the MerCruiser 8.2L for pleasurable low-stress cruising and outstanding fuel economy.

8.2L

6.2L

300 / 350 **STERNDRIVE**

We designed our own V8 6.2L to deliver the perfect balance of power, easy maintenance, superior corrosion-resistance and a quiet, pleasurable ride. Generous 6.2-liter displacement results in an outstanding power-to-weight ratio and provides a more enjoyable boating experience by letting you plane your boat quickly, handle rough seas and stay on plane at lower speeds.



200 / 250 **STERNDRIVE**

Our engineers started from scratch to develop this powerful gem – a V6 4.5-liter engine designed specifically for marine duty that moves a boat faster and quieter – while using less fuel – than any other engine in its class.

4.5L



JOYSTICK PILOTING FOR STERNDRIVES

Joystick Piloting for Sterndrives on dual-engine installations offers fingertip control for confident low-speed maneuvering.



DIGITAL THROTTLE & SHIFT

Available with Digital Throttle & Shift (DTS) which replaces mechanical cable controls with a silky-smooth drive-by-wire experience.

ADAPTIVE SPEED CONTROL

Adaptive Speed Control (ASC) automatically maintains a set rpm as load and conditions change in tight turns and tow-sport activities, so you'll be making fewer throttle-control adjustments.

ENGINE GUARDIAN

Our Engine Guardian System monitors multiple engine sensors and averts potential problems with timely intervention.



CORROSION PROTECTION

We battle tough marine environments with corrosion-resistant alloys, stainless steel and composites. Our multi-step MercFusion Paint System creates an outer seal against the elements, while MerCathode® provides automatic protection against galvanic corrosion.

SEACORE system

Available SeaCore® industrial hardcoat anodizing and freshwater (closed) cooling provide the ultimate protection in saltwater.

EASIER MAINTENANCE

6.2L and 4.5L sterndrives need no 20-hour service, and feature a maintenance-free valve-train. A maintenance center on the front of the engine makes the oil dipstick, fill and filter easily identifiable and accessible.



SMOOTH AND QUIET

4.5L and 6.2L sterndrives feature aft-facing throttle body, improved intake resonator and larger engine mounts that redirect engine noise away from the cockpit, while significantly reducing vibration.

It's about superior power and performance. It's about a smoother, quieter boating experience. It's about making the fun last with marine-specific parts and systems with state-of-the-art corrosion protection. All by design, not adaptation.



MERCUISER DRIVES

Our drives are the perfect match to a powerful MerCruiser engine. From compact runabouts to heavy cruisers and go-fast speedsters, there's an ideal MerCruiser drive for each application, and the right Mercury prop to dial in responsive performance.



ALPHA ONE®

Rugged, reliable, and tested by time and countless satisfied customers, our Alpha One drive offers a sleek hydrodynamic profile that slices through the water to enhance fuel economy and control. It's rated for speeds up to 65 mph and up to 300hp in single and dual applications.



BRAVO TWO®, TWO X® AND TWO XR

Meet the king of thrust. Our Bravo Two drive family is designed to swing props up to 20 inches in diameter with a massive blade area that's ideal for pushing houseboats and lifting the heaviest cruisers on plane with ease and holding those boats on plane at lower cruising speeds to save on fuel. Rated for speeds up to 55 mph and up to 450hp in single and dual applications.



BRAVO ONE®, ONE X AND ONE XR

Bravo One drives are designed to handle the power of big block engines with a longer torpedo shape and a deeper skeg for confident control at all speeds. Dual water pick-ups keep big engines running cool at higher speeds. These drives are intended for single- and multi-engine applications that can eclipse 100 mph, with drive models rated for up to 600hp.



BRAVO THREE®, THREE X® AND THREE XR

With the added blade area of dual contra-rotating propellers up to 16 inches in diameter, our Bravo Three drives really grab the water. Because the props rotate in opposite directions, they cancel prop torque for better tracking at all speeds and provide improved control around the dock, in forward gear and reverse. Rated for speeds up to 65 mph and up to 525hp in single and dual applications.

200 - 430 STERNDRIVES

Displacement	4.5L	4.5L	6.2L	6.2L	8.2L MAG	8.2L MAG H.O.
HP/kW	200/149	250/186	300/224	350/261	380/283	430/321
WOT RPM	4400-4800	4800-5200	5000-5400	5000-5400	4600-5000	4600-5000
Cylinders	V6	V6	V8	V8	V8	V8
Displacement	275 cu in (4.5L)	275 cu in (4.5L)	377 cu in (6.2L)	377 cu in (6.2L)	502 cu in (8.2L)	502 cu in (8.2L)
Emission Control Technology (ECT)	Yes*	Yes*	Yes*	Yes*	Yes*	Yes*
Fuel Injection	Multi-point Electronic Fuel Injection (MPI)	Multi-point Electronic Fuel Injection (MPI)	Multi-point Electronic Fuel Injection (MPI)	Multi-point Electronic Fuel Injection (MPI)	Multi-point Electronic Fuel Injection (MPI)	Multi-point Electronic Fuel Injection (MPI)
Fuel/Ethanol Tolerance	87 Octane/up to 10% ethanol	87 Octane/up to 10% ethanol	87 Octane/up to 10% ethanol	87 Octane/up to 10% ethanol	87 Octane/up to 10% ethanol	87 Octane/up to 10% ethanol
Cooling System	Thermostatically controlled raw water**	Thermostatically controlled raw water**	Thermostatically controlled raw water**	Thermostatically controlled raw water**	Freshwater	Freshwater
Engine Weight†	761lbs (345kg)	761lbs (345kg)	882lbs (400kg)	882lbs (400kg)	1122lbs (509kg)	1122lbs (509kg)
Engine Guardian	Yes	Yes	Yes	Yes	Yes	Yes
Digital Throttle & Shift (DTS)	N/A	Optional	Optional	Optional	Optional	Optional
Drives	Alpha	Alpha Bravo One Bravo Two Bravo Three	Bravo One Bravo Two Bravo Three	Bravo One Bravo Two Bravo Three	Bravo One X, XR Bravo Two X Bravo Three X, XR	Bravo One X, XR Bravo Two X Bravo Three X, XR



Active Trim

Active Trim makes boating easier and more enjoyable by automatically trimming outboard and sterndrive engines. Active Trim simplifies boat operation while improving engine performance and decreasing fuel costs.

Active Trim is compatible with all current SmartCraft-capable Mercury sterndrive engines.



VesselView Mobile

VesselView Mobile allows boaters to use a mobile device (smartphone or tablet) to connect with their Mercury outboard or sterndrive engine(s). The plug-and-play module connects to your device via Bluetooth, providing quick, convenient access to your engine's data.

VesselView Mobile is compatible with all SmartCraft-capable Mercury sterndrive engines (2004 and newer).

Factory-backed

Every MerCruiser Sterndrive comes with Mercury Marine's class-leading corrosion protection. Peace of mind comes standard – thanks to Mercury's industry-exclusive three-year limited corrosion warranty. MerCruiser Sterndrives also carry a one-year factory limited warranty and SeaCore models carry a three-year factory limited warranty. An additional year of factory limited warranty is applied if the engine is installed by an IQ certified Boat Manufacturer.



Joystick Piloting

Mercury Joystick Piloting for sterndrives replaces stress and complexity with confidence, ease and enjoyment. Whether you're docking your boat, maneuvering in a marina or simply needing to hold your position despite wind and current, you will experience complete control delivered by Joystick Piloting.

Available on all dual-engine MerCruiser Sterndrive installations 250hp and up.



*Non-catalyzed models available for select international markets. Consult your local dealer for availability. **Optional freshwater cooling. Freshwater cooling standard on Bravo SeaCore System. †Weight of engine without drive or propeller. Note: Due to our constant efforts to offer the finest products available, we reserve the right to change specifications without notice. Visit MercuryMarine.com or your Mercury Authorized Dealer for more engine specs and test results.

DESIGNED TO DELIVER

INBOARDS

We designed **Mercury MerCruiser Inboard** engines to deliver ideal gasoline inboard power. And in each of them we included extra displacement and a torque curve designed to move boats with smooth efficiency. The technology and reliability of our inboards allow you to head for the horizon with confidence.





375 / 425 **INBOARD**

The pure, brawny muscle of our big-block V8 inboards inspires confidence. We deliver 8.2 liters of smooth, quiet, efficient power from an engine that's been tuned specifically for inboard duty. At cruising speed these big V8 engines barely break a sweat.

8.2L



6.2L

300 / 350 **INBOARD**

Mercury engineers optimized every design element of the MerCruiser 6.2L engine for marine duty. It offers extra displacement for more of the torque you need to lift an inboard boat on plane and keep it there. We designed an entire system of features to suppress engine sound and vibration. All you'll feel is power. Boating has never been so enjoyable.





DIGITAL THROTTLE & SHIFT

MerCruiser Inboards come standard with Digital Throttle & Shift (DTS) which replaces mechanical cable controls with a silky-smooth drive-by-wire experience.



JOYSTICK PILOTING FOR INBOARDS

Combine our Digital Throttle & Shift (DTS) controls with available Joystick Piloting for Inboards and enjoy the ultimate in low-speed control and maneuverability at the touch of a finger. Joystick Piloting for Inboards comes standard with a thruster-only feature for large dual engine boats, allowing the driver to easily adjust heading by bumping the joystick. *This is the only inboard joystick system for boats with single engines.*



ADAPTIVE SPEED CONTROL

Adaptive Speed Control (ASC) automatically maintains a set rpm as load and conditions change in tight turns and tow-sport activities, so you'll be making fewer throttle-control adjustments.

CORROSION PROTECTION

Our comprehensive anti-corrosion package is backed by a four-year limited warranty. Freshwater (closed) cooling is standard on the MerCruiser 6.2L inboard, and it replaces raw water with long-life five-year coolant.

SEACORE system

Available SeaCore® industrial hardcoat anodizing and freshwater (closed) cooling provide the ultimate protection in saltwater.

ENGINE GUARDIAN

Our Engine Guardian System monitors multiple engine sensors and averts potential problems with timely intervention.



THE POWER OF PLAY

TOW SPORT INBOARDS

Get ready for the ride of a lifetime. **Mercury MerCruiser Inboards for Tow Sports** deliver the torque and precise speed control you want for peak performance, session after session. Reliability is built in, too, so you can just turn the key and hit it, all season long.



320 / 370 **TOW SPORT INBOARD**

Our MerCruiser 6.2L Tow Sport engine is a specialist, designed expressly for the demands of tow-sport athletes, producing abundant torque to pop skiers and board riders out of the hole. Yet it's smooth and quiet, and it delivers outstanding fuel efficiency to keep gas dock visits at a minimum.

QUIET AND EFFICIENT

Because you're always close to the engine in a tow-sport boat, we've designed features to reduce noise and vibration. Optimized engine mounts isolate undesirable vibration and reduce resonant noise throughout the boat. A standard exhaust catalyst system and dual O2 sensors contribute to lower emissions and a cleaner ride.

16200

JOYSTICK PILOTING FOR INBOARDS

Our Digital Throttle & Shift (DTS) control is optional on MerCruiser 6.2L Tow Sport engines, and it delivers smooth shifting, precise throttle control and high-tech feel. Our available Joystick Piloting for Inboards offers confident close-quarters control for single-engine inboards – it's the only joystick you can buy for tow sport boats – for easier boat handling around the dock and the trailer, and quick pick-ups for dropped skiers and boarders.



300 - 425 INBOARDS

320 / 370 TOW SPORT INBOARDS

Displacement	6.2L	6.2L	8.2L Horizon	8.2L H.O.	6.2L	6.2L
HP/kW	300/224	350/261	375/280	425/317	320/239	370/276
WOT RPM	5000-5400	5000-5400	4200-4600	4400-4800	5000-5400	5000-5400
Cylinders	V8	V8	V8	V8	V8	V8
Displacement	377 cu in (6.2L)	377 cu in (6.2L)	502 cu in (8.2L)	502 cu in (8.2L)	377 cu in (6.2L)	377 cu in (6.2L)
Emission Control Technology (ECT)	Yes*	Yes*	Yes*	Yes*	Yes*	Yes*
Fuel Injection	Multi-point Electronic Fuel Injection (MPI)	Multi-point Electronic Fuel Injection (MPI)	Multi-point Electronic Fuel Injection (MPI)	Multi-point Electronic Fuel Injection (MPI)	Multi-point Electronic Fuel Injection (MPI)	Multi-point Electronic Fuel Injection (MPI)
Fuel/Ethanol Tolerance	87 Octane up to 10% ethanol	87 Octane up to 10% ethanol	87 Octane up to 10% ethanol	87 Octane up to 10% ethanol	87 Octane up to 10% ethanol	87 Octane up to 10% ethanol
Cooling System	Thermostatically controlled Freshwater	Thermostatically controlled Freshwater	Thermostatically controlled Freshwater	Thermostatically controlled Freshwater	Thermostatically controlled raw water**	Thermostatically controlled raw water**
Engine Weight†	947lbs (430kg)	947lbs (430kg)	1122lbs (509kg)	1122lbs (509kg)	862lbs (391kg)	862lbs (391kg)
Engine Guardian	Yes	Yes	Yes	Yes	Yes	Yes
Digital Throttle & Shift (DTS)	Standard	Standard	Standard	Standard	Optional	Optional



Factory-backed

Every MerCruiser Inboard comes with Mercury Marine's class-leading corrosion protection. Peace of mind comes standard – thanks to Mercury's industry-exclusive three-year limited corrosion warranty. MerCruiser Inboards also carry a three-year factory limited warranty and Tow Sport Inboards carry a two-year limited warranty. An additional year of factory limited warranty is applied if the engine is installed by an IQ certified Boat Manufacturer.

Joystick Piloting

Mercury Joystick Piloting for inboards replaces stress and complexity with confidence, ease and enjoyment. Whether you're docking your boat, maneuvering in a marina or simply needing to hold your position despite wind and current, you will experience complete control delivered by Joystick Piloting.

Available on all MerCruiser Inboard engines.
Optional on MerCruiser Tow Sport Inboard engines.



*Non-catalyzed models available for select international markets. Consult your local dealer for availability. **Optional freshwater cooling. Freshwater cooling standard on Bravo SeaCore System. †Weight of engine without drive or propeller. Note: Due to our constant efforts to offer the finest products available, we reserve the right to change specifications without notice. Visit MercuryMarine.com or your Mercury Authorized Dealer for more engine specs and test results.

PACK A PUNCH

DIESEL

Mercury Diesel engines offer a sophisticated diesel-engine experience: Advanced turbocharging and injection technologies produce a powerband that's carefully calibrated for marine performance and outstanding economy. Lightweight designs boost performance further, while clean and quiet operation enhance your day on the water.

6.7L



480 / 500 / 550
DIESEL

Experience a new level of responsive power for sport yachts that boasts 20 percent quicker acceleration and faster top speed than the competition. This L6 common rail engine utilizes design features and materials specific to marine applications; is compatible with all Mercury controls, VesselView displays and SmartCraft electronics; and is backed by the global Mercury service network.

4.2L



335 / 370
DIESEL

The common-rail Turbo Direct Injection (TDI) technology used by Mercury is a combustion system that turns every drop of fuel into big power and torque for superior running efficiency and class-leading fuel economy. In fact, 50 percent better fuel economy than comparable power gas engines. More miles between fuel docks. More quality time on the water.

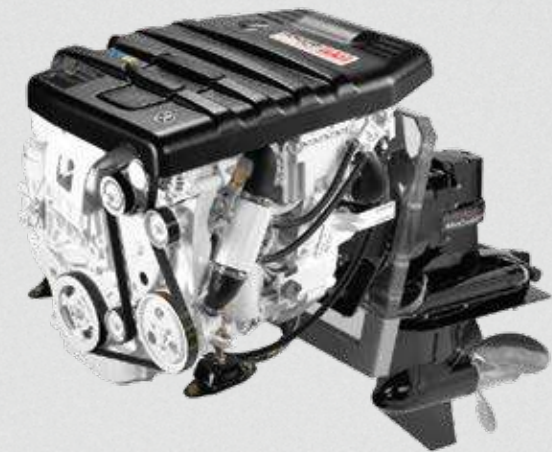
3.0L



150 / 230 / 270
DIESEL

The new Mercury Diesel 3.0L common-rail highspeed engine delivers exceptional performance and substantial improvements in acceleration and top speed via a new water-cooled variable geometry turbocharger design (VGT). The advancements provide reduced time to plane and outstanding overall performance. Mercury Diesel's 3.0L engine is compatible with all Mercury controls and SmartCraft® electronics and is serviceable through Mercury's global service network.

2.0L



150 / 170
DIESEL

Reliable, compact and robust, our 2.0L diesel engine is an L4 design that offers excellent power density and leading technology. Common rail fuel injection and solenoid fuel injectors deliver precise fuel control for clean operation and efficiency that will extend your range and decrease costs. This engine is compatible with Mercury Diesel Alpha and Bravo series drives.

DIGITAL THROTTLE & SHIFT

Full Mercury SmartCraft compatibility provides access to dozens of engine, boat and navigation options, plus available Digital Throttle & Shift (DTS) control systems.



JOYSTICK PILOTING

Pair available Mercury Digital Throttle and Shift (DTS) controls with Mercury Joystick Piloting for Inboards (JPI) in single-engine and twin-engine applications, Joystick Piloting for Sterndrives (JPS) or Zeus Pod Drives. With a simple push or twist of the joystick, you can move the boat from side to side, diagonally or even spin on a single axis.



RESISTING CORROSION

Our diesel engines provide state-of-the-art anti-corrosion features, including a thermostatically controlled closed water-cooled system. Water-cooled engine oil, gear oil and steering fluid decrease engine-room temperatures to extend the life of the engine.



You can count on the optional SeaCore® system for the ultimate in salt water protection in the harshest conditions.



ZEUS POD DRIVES

Our Zeus® pod drives (for 500hp and 550hp) offer unmatched performance, safety and vessel systems control. Outstanding fuel efficiency and performance are delivered from horizontal thrust angles, contra-rotating propellers and a superior hydrodynamic shape. Independent steering provides greater control at high and low speeds, while smooth and quiet operation enhances the boating experience for everyone aboard.

DIESEL DRIVES

For every high-performing Mercury Diesel engine, there's an equally high-performing drive. Working together to give you better performance. Whatever your boating style. Each drive is designed, built, and tested to deliver best-in-class reliability.



ALPHA ONE®

Available for single and twin engine applications, the Alpha One's efficient hydrodynamic profile produces very little drag, which means better boat performance and fuel economy. Designed for engines capable of up to 150hp.



BRAVO TWO X® DIESEL AND TWO XR DIESEL

Meet the king of thrust. Our Bravo Two drive family is designed to swing props up to 20 inches in diameter with a massive blade area that's ideal for pushing houseboats and lifting the heaviest cruisers on plane with ease and holding those boats on plane at lower cruising speeds to save on fuel. Rated for speeds up to 55 mph and up to 370hp in single and dual applications.



BRAVO ONE X® DIESEL AND ONE XR DIESEL

Bravo One drives are designed to handle the power of big block engines with a longer torpedo shape and a deeper skeg for confident control at all speeds. Dual water pick-ups keep big engines running cool at higher speeds. These drives are intended for single- and multi-engine applications that can eclipse 55 mph, with drive models rated for up to 370hp.



BRAVO THREE X® DIESEL AND THREE XR DIESEL

With the added blade area of dual contra-rotating propellers up to 16 inches in diameter, our Bravo Three drives really grab the water. Because the props rotate in opposite directions, they cancel prop torque for better tracking at all speeds and provide improved control around the dock, in forward gear and reverse. Rated for speeds up to 65 mph and up to 370hp in single and dual applications.

115 - 370 TIER 3 DIESEL

Displacement	2.0L		2.0L	2.0L	3.0L			4.2L	4.2L	6.7L	6.7L	6.7L
Horsepower	115	130	150	170	150	230	270	335	370	480	500	550
Rated RPM	4000				4000			4200		3200		
Cylinders	Inline-4				V6			V8		Inline-6		
Dry Weight*	551lbs (250kg)		582lbs (264kg)		789lbs (358kg)			836lbs (379kg)		1,642lbs (745kg)		
L x W x H	32 x 28 x 29in				37 x 33 x 34in			41 x 33 x 33in		43 x 35 x 34in		
Aspiration	Turbocharged		Turbocharged (VGT)		Turbocharged (VGT)			Twin Turbocharged (VGT)		Turbocharged		
Fuel Injection	High Pressure Common Rail (HPCR)				High Pressure Common Rail (HPCR)			High Pressure Common Rail (HPCR)		High Pressure Common Rail (HPCR)		
Cooling System	Freshwater				Freshwater			Freshwater		Freshwater		
Digital Throttle & Shift (DTS)	Optional				Optional			Optional		Standard		
Drives	Shaft drive	Alpha	Alpha Bravo One X Bravo Two X Bravo Three X		Bravo One X, XR Bravo Two X, XR Bravo Three X, XR Shaft drive			Bravo One XR Bravo Two XR Bravo Three XR Shaft drive		Shaft drive	Zeus Pod or shaft drive	



Factory-backed

Every Mercury Diesel comes with class-leading corrosion protection and an industry-exclusive three-year limited corrosion warranty. Mercury Diesel engines also carry a two-year factory limited warranty and Diesel Tow Sport Inboards carry a three-year limited warranty. 6.7L Tier 3 Diesel engines carry a three-year limited warranty plus two years on major components. An additional year of factory limited warranty is applied if the engine is installed by an IQ certified Boat Manufacturer. Certified installations of Diesel Inboard Shaft Tow Sport applications receive two additional years of Standard Limited Warranty.

115 - 350 TIER 2 DIESEL

Displacement	2.0L				2.8L	4.2L			6.7L						
Horsepower	115	130	150	170	220	270	320	350	135	150	200	180	230	260	280
Rated RPM	3000	4000			3800	3800			3200						
Cylinders	Inline-4				Inline-4	Inline-6			Inline-6						
Dry Weight*	551lbs (250kg)		582lbs (264kg)		794lbs (360kg)	1014lbs (460kg)			1169lbs (530kg)		1334lbs (605kg)		1334lbs (605kg)		
L x W x H	32 x 28 x 29in		32 x 28 x 30in		34 x 31 x 32in	43 x 31 x 32in			43 x 28 x 36in		43 x 32 x 32in		43 x 32 x 31in		
Aspiration	Turbocharged				Turbocharged	Turbocharged			Turbocharged						
Fuel Injection	High Pressure Common Rail (HPCR)				High Pressure Common Rail (HPCR)	High Pressure Common Rail (HPCR)			Mechanical Fuel Injection						
Cooling System	Freshwater				Freshwater	Freshwater			Freshwater						
Digital Throttle & Shift (DTS)	Optional				Optional	Optional			N/A						
Drives	Shaft drive	Alpha	Alpha Bravo One X Bravo Two X Bravo Three X		Bravo One X Bravo Two X Bravo Three X	Bravo One X, XR Bravo Two X Bravo Three X, XR			Bravo One XR Bravo Three X, XR		Bravo Two X, XR			Shaft drive	

*Weight of engine without drive or propeller. Note: Due to our constant efforts to offer the finest products available, we reserve the right to change specifications without notice. Visit MercuryMarine.com or your Mercury Authorized Dealer for more engine specs and test results.



BETTER BOATING THROUGH
*PERFECT
HARMONY*

Mercury strives to constantly deliver propulsion-system solutions that elevate the boating experience with easy, meaningful and intuitive new products. Mercury's controls, rigging and displays are integral elements of the "connected Mercury system" that extends past our core products to deliver aesthetically pleasing, technologically advanced, and user-friendly prop-to-helm solutions.



Engines

Mercury engines have set and reset the standards for reliable, trouble-free performance; superior power and torque; low emissions; and low fuel consumption. And nobody has given boaters more ways to propel their boats, activities, and pursuits reliably, comfortably, and efficiently across the water.

Propellers

Propeller selection can impact virtually every aspect of your boat's performance, and Mercury has a solution for every propeller challenge. It's no wonder you see Mercury propellers on boats of all engine brands.

Controls

Mercury controls are engineered, built and tested for technical precision and easy operation. Choose from side mounts, flush panel mounts and console mounts with combined speed and trim functions, engine warm up, and more.

Digital Throttle & Shift

Digital Throttle and Shift (DTS) provides precise handling, seamlessly connects with compatible displays, and delivers instant response and total control with no hesitation.

Active Trim

Mercury Active Trim for outboards and sterndrives automatically trims your boat, which simplifies operation while improving performance and decreasing fuel costs. With Active Trim, new boaters and experienced captains can achieve perfect trim without constantly monitoring and adjusting the trim control.

Joystick Piloting

Whether you're docking your boat, maneuvering in a marina or simply needing to hold your position despite wind and current, you will experience complete control delivered by Joystick Piloting. With intuitive fingertip command you can effortlessly make your boat do exactly what you want it to do.

Learn more about Mercury Joystick Piloting on pages 82 and 83.

Displays

Stay in the know by having the status of your propulsion system available at a glance, be notified visually and audibly should an issue arise, and trust that you have the most integrated solution available providing advanced control features such as Troll Control, SmartTow Launch Control and Active Trim.

VesselView

Mercury VesselView can display engine and boat performance information, genset function, sounder and much more. It has access to more information and data on boat and engine functions than any other system in the boating industry. You can monitor up to four engines simultaneously on an intuitive "at a glance" LCD Screen.

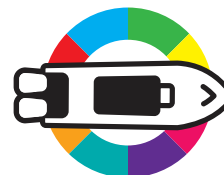
VesselView Mobile

VesselView Mobile is designed to maximize enjoyment of your time on the water. That includes using your mobile device (smartphone or tablet, Android or iPhone) to connect via Bluetooth with your Mercury engine to display VesselView information on the device. VesselView Mobile also records your performance and fuel data, and lets you share with your preferred dealer important information, such as engine hours, fault information and maintenance data – all of it aimed at improving your boating experience.

VesselView Link

Offered in single-engine or multi-engine versions (two to four engines), VesselView Link connects all features offered by SmartCraft to compatible Lowrance and Simrad displays, placing the complete VesselView information suite and control capability on your main helm display.

Learn more about Mercury propulsion systems at MercuryMarine.com





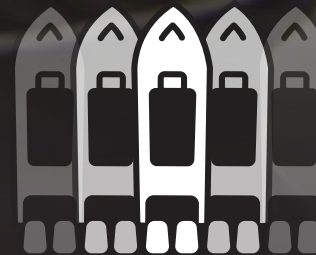
JOYSTICK PILOTING

TAKE CONTROL

Mercury Joystick Piloting for outboards, sterndrives, inboards and pods replaces stress and complexity with confidence, ease and enjoyment. Whether you're docking your boat, maneuvering in a marina or simply needing to hold your position despite wind and current, you will experience complete control delivered by Joystick Piloting. With intuitive fingertip command you can effortlessly make your boat do exactly what you want it to do.

360° CONTROL

Move your boat in any direction – sideways, diagonally, forward or backward – or rotate in place. Perform combined commands, such as simultaneously rotating and moving sideways. Dock or maneuver with confidence in tight spaces despite wind and current.





ROUTE

Route automatically navigates to active waypoints. Just program the route and the system does the rest.

SKYHOOK® DIGITAL ANCHOR

Skyhook digital anchor locks in a boat's position using GPS, then works with the engines and drives to maintain position and heading with the push of a button – regardless of wind or current.



HEADING

Auto heading uses an integrated digital compass to automatically maintain your boat's heading to keep you on your desired path.

JOYSTICK PILOTING FOR OUTBOARDS

Joystick Piloting for Outboards – designed for dual, triple and quad Verado-powered vessels and personalized for each boat model – was the industry's first joystick system for outboards, and it remains the best-selling marine joystick system.

Available on 250, 300 and 350hp Verado and 300hp SeaPro AMS outboards.



Learn more about Mercury Joystick Piloting for Outboards and advanced features at [MercuryMarine.com/Steering](https://www.MercuryMarine.com/Steering)



MERCURY PROPELLERS®

REDEFINING PERFORMANCE

Technology and 160 years of combined engineering experience make Mercury Marine the world leader in design and production of propellers for outboards and sterndrives. Mercury propellers are produced at our dedicated facility in Wisconsin by foundry and finishing experts working with proprietary aluminum and stainless-steel alloys. Mercury propellers are designed to extract peak performance from any boat on the water, which is why you can find Mercury propellers on many engine brands.



X7[®] ALLOY

Our proprietary X7 stainless-steel alloy is 30 percent stronger and four times more durable than conventional stainless, which allows us to design revolutionary props that otherwise would be impossible.



MERCALLOY[®]

Our patented Mercalloy aluminum is designed specifically for the die-cast process and helps us produce the highest quality props, free of porosity for increased strength.

PERFORMANCE VENT SYSTEM



Use the exclusive PVS[®] system to custom tune the venting of your propeller, allowing your boat to achieve optimal acceleration.

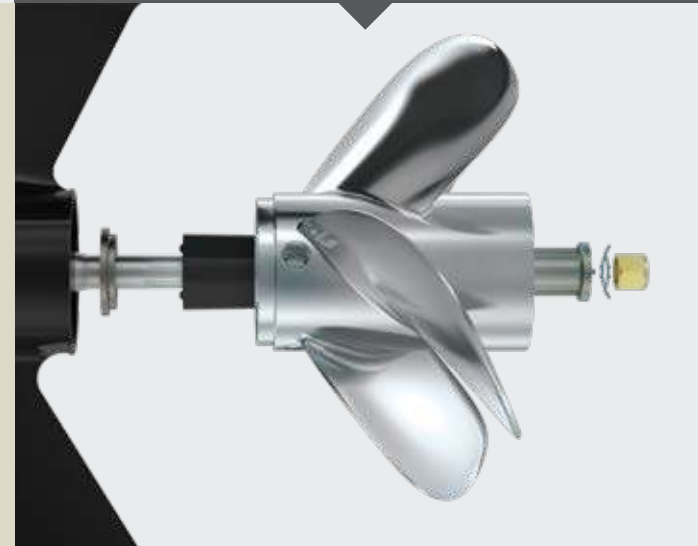
FLO-TORQ[®] HUB SYSTEM

The Flo-Torq II system provides a cushion between the engine and prop to protect the drivetrain from most impacts, and it offers unmatched corrosion protection. Flo-Torq SSR technology is available for outboard owners seeking the smoothest-shifting hub system on the market.



WORLD'S QUIETEST PROPELLER HUB

The Flo-Torq SSR hub kit is the perfect complement to Mercury's new V6 3.4L engines, as well as any other Mercury engine with a 1-inch propeller shaft. The SSR utilizes Mercury's proven Soft Shift Rubber technology to virtually eliminate shift clunk and prop rattle while increasing performance.





PROPELLERS

Stronger materials, more innovative designs, and unmatched engineering expertise keep Mercury ahead of the competition. And it will keep you ahead of the pack. From eye-watering speeds for tournament pros to unmatched pulling power for tow sports, Mercury propellers deliver.



ENERTIA®

- X7 Alloy and PVS
- Improves top speed and acceleration of outboards and stern drives
- Our top-performing prop for high-horsepower pontoons
- For 90hp and above Command Thrust outboards, and MerCruiser Alpha One and Bravo One



FURY®

- X7 Alloy and PVS
- Revolutionary performance for tournament bass boats
- Reduced diameter and large blade area boosts speed and acceleration
- Top performance for 250hp outboards on bass, bay and flats boats



ENERTIA ECO

- X7 Alloy and PVS
- Up to 10 percent better fuel economy at cruising speed
- No-compromise performance
- Best for 250hp outboards on heavy offshore boats



FURY 4®

- X7 Alloy and PVS
- Four-blade design
- Designed to lift heavy 20-to-22-foot bass and walleye boats
- Perfect for 250hp outboards with a full tournament load



REVOLUTION 4®

- Stainless steel and PVS
- Aggressive four-blade design
- Outstanding hole shot and superior rough-water holding
- Ideal for 250hp outboards on center consoles



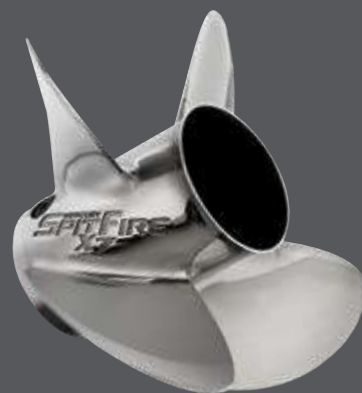
SPITFIRE®

- Mercalloy
- Aggressive four-blade design that's also affordable
- Combines three-blade speed with four-blade hole shot
- Best matched to 25hp to 150hp outboards and MerCruiser Alpha One



SPITFIRE X7

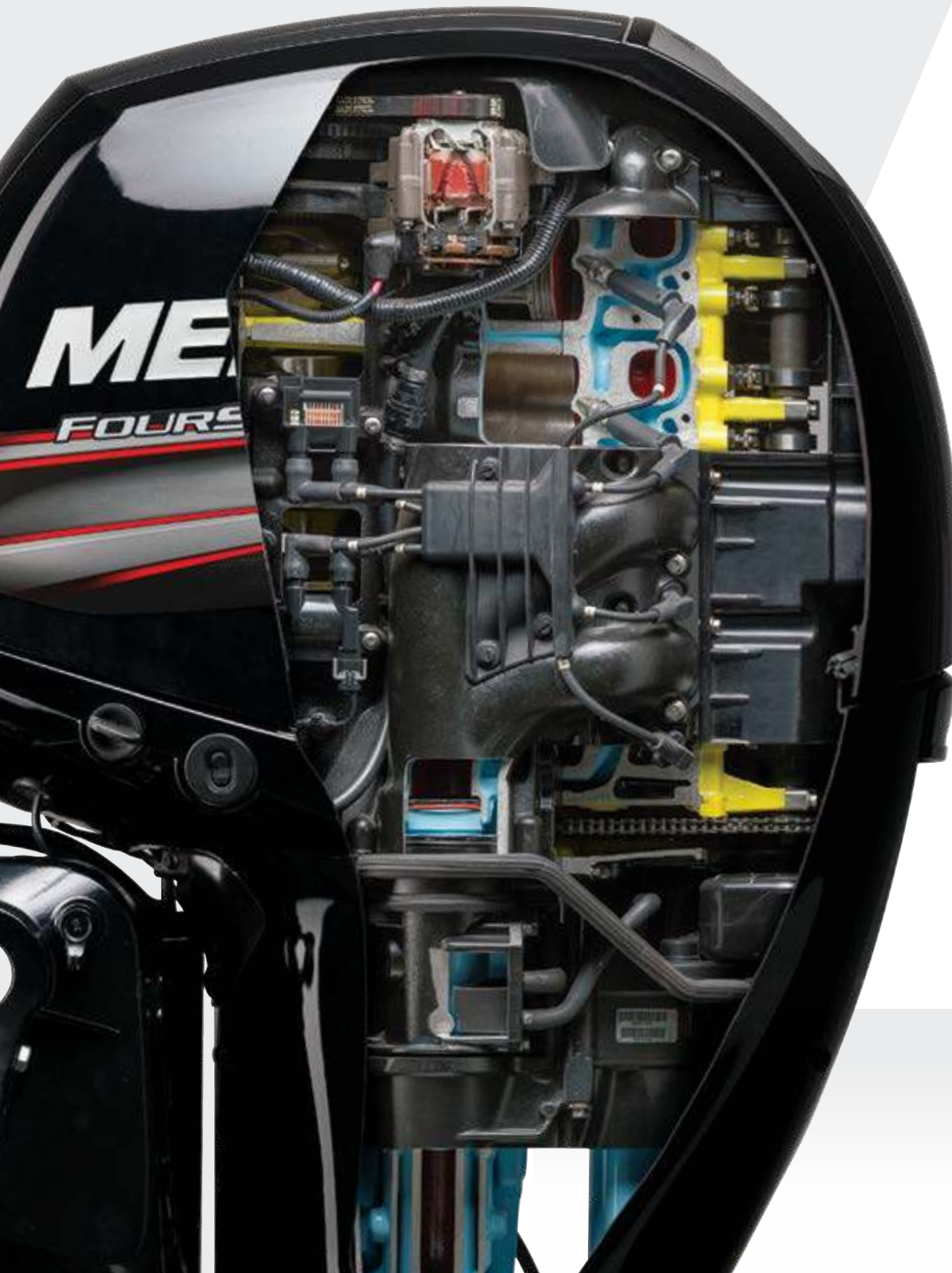
- X7 Alloy and PVS
- High-performance all-purpose propeller
- Strong acceleration, top speed and holding
- Designed for FourStroke 75hp to 115hp outboards



BRAVO THREE®

- Stainless-steel
- Four-blade front and three-blade rear contra-rotating design
- Improves speed, acceleration, holding and economy
- Exclusively for MerCruiser Bravo III





MERCURY PRECISION PARTS®

THE ORIGINAL SOURCE OF QUALITY

Craftsmanship sets the tone for your vessel, and even the smallest details can be critical. That's why Mercury is committed to providing precision parts made specifically for all Mercury engines. Mercury parts and accessories are designed and built to deliver original factory fit and performance to keep your Mercury engine running like new and your boating experience trouble-free.





MERCURY MAINTENANCE PRODUCTS

Mercury Maintenance Products help you maximize enjoyment and avoid frustration. You should never have to guess which products will keep your engine running at peak performance. You can find Mercury maintenance items such as one-stop maintenance kits, oil-change kits, filters and all other maintenance parts at your local Mercury dealer.



MERCURY PRECISION LUBRICANTS®

When it comes to protecting your engine, trust the people who made it. Mercury oils and lubricants are specially formulated and tested in-house to help your engine deliver optimal performance for a better boating experience. Mercury oils and lubricants meet the demands of all marine environments, and they meet the high standards Mercury Marine sets for all its products.





COMMITTED TO QUALITY

We're focused on creating wonderful, stress-free boating experiences and that begins with total commitment to quality. Our ability to unite the highest-quality products with the best technologies leads us to continually assess our manufacturing processes, products and practices. We're on a never-ending mission to constantly improve the reliability, performance and durability of all our products. To us, excellent quality is the starting point, not a special feature.





MercuryMarine.com

FEBRUARY 2019 90-8M0107294

© 2019 Mercury Marine. All Right Reserved. Reproduction in whole or in part without permission is prohibited. Alpha One, Bravo One, Bravo Two, Bravo Two X, Bravo Three, Bravo Three X, Circle M Logo, Enertia, Flo-torq, Fury, Go Boldly, Harris, Lowe, Lund, Mercalloy, Mercury, MerCruiser, Mercury Marine, Mercury Precision Lubricants, Mercury Precision Parts, Mercury Propellers, OptiMax, Princecraft, Pro XS, PVS, Revolution 4, SeaCore, Skyhook, SmartCraft, Spitfire, SportJet, Verado, VesselView, X7 are registered trademark of Brunswick Corporation. SeaPro and VesselView Mobile are trademarks of Brunswick Corporation. Mako and Nitro are registered trademarks of Tracker Marine, Yellowfin is a registered trademark of Yellowfin Yachts, Inc.

Product information in this brochure is accurate as of February 14, 2019. For the latest content, please visit MercuryMarine.com

