

Kubota®



KUBOTA COMPACT EXCAVATOR

KX

KX71-3 SUPER SERIES

Built rugged, responsive and reliable to handle your toughest excavator jobs





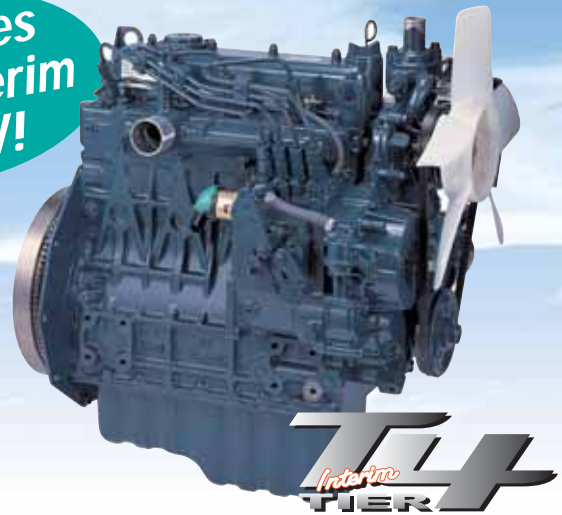
Tackle groundbreaking tasks with the excavator that's engineered solid to give you the deepest digging depth and highest power in its class. The Kubota KX71-3 Super Series – the right choice.

When outstanding maneuverability, operational performance, operator comfort, ease of servicing, durability and reliability are the deciding factors, the KX71-3S compact excavator is the answer. **Packed with a host of features that deliver efficient and reliable performance, the advantage is yours when you're taking care of business with the KX71-3S excavator. The Kubota KX71-3S – it's stronger to make your professional excavating jobs easier.**

Clean-running Kubota Engine

Complies with Interim Tier IV!

Powerful and dependable, the KX71-3S's diesel engine delivers superior horsepower and performance. It offers low noise and vibration levels, exceptional fuel efficiency, and complies with the EPA's 2008 interim Tier IV emissions regulations.



Comfort that keeps you working at peak efficiency.

Spacious operating area with deluxe suspension seat

More spacious than standard tail-swing excavators, the KX71-3S's comfortable operating area helps reduce operator fatigue. The high-back deluxe suspension seat is equipped with wrist rests. Moreover, the height and spring firmness are adjustable, ensuring optimum comfort for every operator.

Convenient Two-pattern Selection System (TPSS)

Change between ISO and SAE operating patterns with a quick flip of the TPSS switch, without tools or leaving your seat.



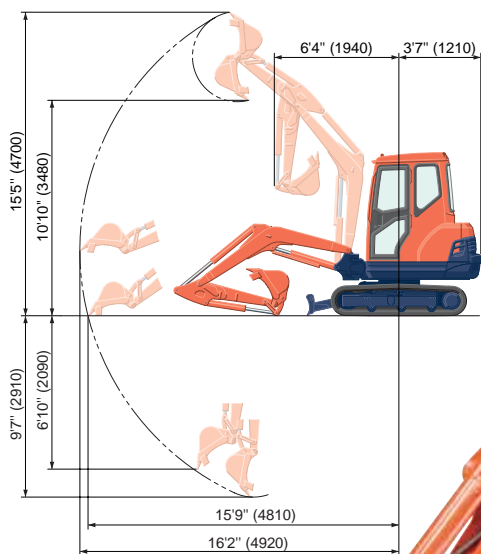
User-friendly operation

- 1. Simple forefinger operation**
Used for some special applications that require continuous oil flow, such as a brush cutter. The on/off button controlled by the forefinger reduces operator fatigue.
- 2. Short stroke operating levers**
The operating levers require less effort and shorter movements, ensuring improved control, responsiveness and comfort, and reduced operator fatigue. Only a flick of the wrist is needed for smooth excavator operation.
- 3. Proportional flow auxiliary switch**
A convenient bi-directional switch enables easy operation of hydraulic thumbs and other hydraulic attachments such as augers and breakers.
- 4. 2-speed travel switch**
The 2-speed travel switch is mounted on the dozer lever for easy operation and control, and advanced, user-friendly travel speed changes.
- 5. Wrist rests**
Adjust the custom wrist rests to your favorite position, or just move them aside. Either way, they help reduce arm movement and operator fatigue for increased job efficiency.



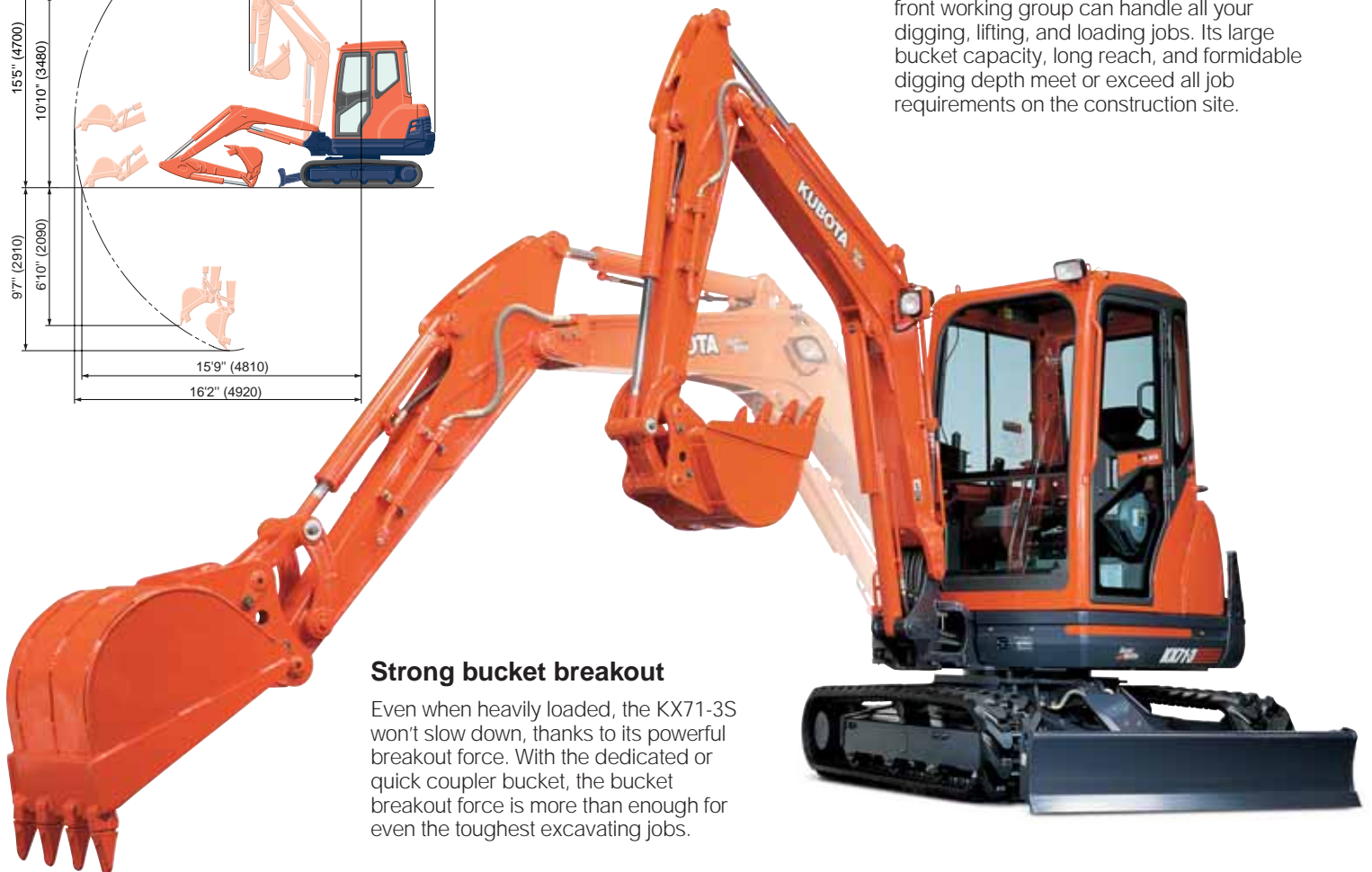


Friendly features & creature comforts – experience these and more with the KX71-3S.



Wide working range

The KX71-3S's powerful and responsive front working group can handle all your digging, lifting, and loading jobs. Its large bucket capacity, long reach, and formidable digging depth meet or exceed all job requirements on the construction site.



Strong bucket breakout

Even when heavily loaded, the KX71-3S won't slow down, thanks to its powerful breakout force. With the dedicated or quick coupler bucket, the bucket breakout force is more than enough for even the toughest excavating jobs.



Adjustable maximum oil flow control for auxiliary port

The digital instrument panel lets you control the oil flow according to your needs or the attachment in use. It eliminates the hassle of using tools to change settings manually, so you don't have to leave the cabin. When using a tilt bucket, you can slow the flow to get just the right control to gently shape a swale. Alternatively, for a brush cutter, direct the oil flow to one side of the excavator arm. The system will even store your settings for the next time you need it, saving time and quickly regulating the flow requirements. Adjustable oil flow enhances performance and saves fuel.



Superior weight and stability

The KX71-3S's operating weight of 6,305 lbs. (2,866 kg) will make you think you are in an excavator one class larger. By widening the tumbler distance and track shoes to 5'1" and 12" respectively, stability is improved and ground pressure reduced. The overall width still allows the excavator to access narrow openings.

Variable displacement pumps

With variable displacement pumps, both the oil flow and pressure are adjusted according to the workload. The pumps even reduce the required engine horsepower for greater fuel economy, and minimized vibration and noise.

Strong traction force

To drive you through those softer ground conditions and keep you working, traction force has been increased by almost 30% over previous models.

Auxiliary hydraulic oil flow

A hydraulic oil flow rate of 13.4 gpm enables the KX71-3S to easily operate a variety of hydraulic attachments, like hydraulic hammers and augers. And a wider selection of attachments means a wider variety of jobs you can accomplish.

Digital panel

A digital panel and the Kubota Intelligent Control System (KICS) help reduce excavator downtime and repair fees by providing accurate and timely diagnostic readings and routine maintenance alerts. The panel not only lets you know when fuel is running low, but warns you during refueling when the tank is nearly full.



Value Thumb bracket

The factory-installed thumb bracket and relief valve significantly reduce the time needed to mount the optional hydraulic thumb.



Extraordinary stability and lifting capacity

Innovative counter balancing technology provides superior excavator stability. Long tumbler distance, a lower center of gravity and Double Flanged Lower Track Rollers combine to deliver safe and effective performance when working to the side or with hydraulic attachments, or lifting heavy objects.

Rear corner protectors

Two heavy-duty protectors—one on each rear corner—protect the engine hood and side covers from damage when working in tight spaces.



Easy maintenance and improved durability – the keys to increased user confidence and the KX71-3S's overall superior performance.

ROPS/FOPS canopy and cab

The ROPS/FOPS canopy and cab provide complete protection from accidental rollovers and falling objects. Both the ROPS and the FOPS meet the applicable, ISO, SAE, and OSHA standards to ensure an extra level of safety and security on the job.

Two-piece hose design

The two-piece hose connections for the dozer and boom cylinder hoses simplify hose replacement and reduce downtime.

Protected cylinder hoses

The bucket cylinder hoses are located inside the arm. And the boom cylinder hoses are routed under the boom bottom.

Centralized swivel bearing lubrication

Grease ports for the swivel bearing, gear teeth, and swing cylinder pin are conveniently grouped on the front of the house.

Front pin bushings

To maximize durability, we've introduced bushings on all of the pivot points on the front attachment and connecting points on the swing bracket.

Fits in tighter places

The KX71-3S tail swing overhang is only 18", making it easier to avoid obstacles that could result in damage to the machine.

Easy maintenance

The KX71-3S is a breeze to maintain. The side and rear covers open wide and the main components are centrally located, giving you quick and easy access to all vital areas, including the engine, fuel tank, water separator, radiator, coolant reservoir, air filter, control valve and hydraulic tank.



Safety

Safety is designed into every detail of the KX71-3S. An Engine Start Lockout System prevents the engine from starting when the safety levers are lowered. A Safety Lever Lockout System helps prevent unexpected excavator and attachment movement when entering or exiting the machine. An Auto House Parking Brake automatically locks the house in the position it was in when the engine was shut off, eliminating the need for a swing lock pin. It also makes the excavator more compact during transport and more secure when parked on an incline.

Accumulator

The accumulator makes replacing attachments safer and more efficient. Turning the key to the "on" position clears residual pressure in the auxiliary hydraulic hose. If the engine is accidentally shut off while the front attachment is raised, turning the key to the "on" position allows you to safely lower it.



KX71-3S OPTIONS

Buckets **Spark arrest muffler** **Travel alarm**

Canopy lights



Hydraulic thumb



Quick coupler

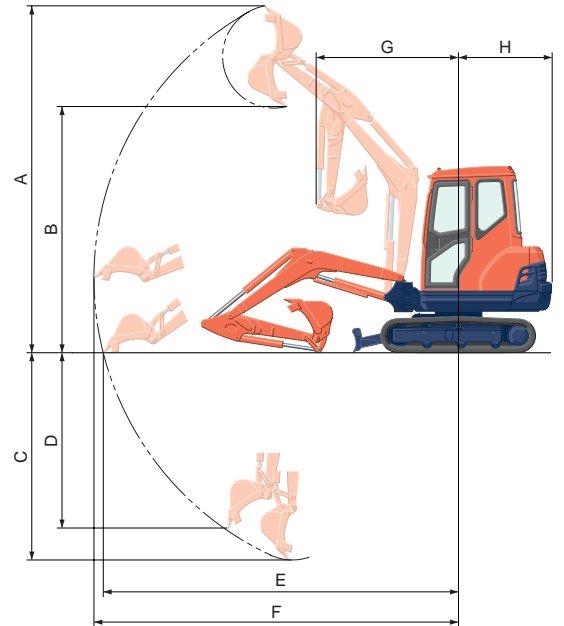


Hydraulic hammer



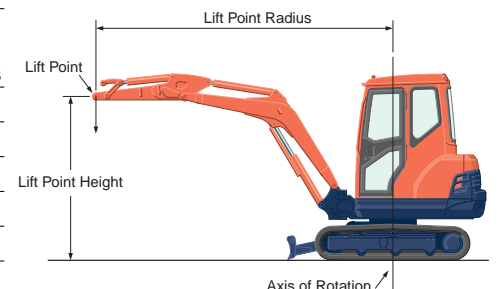
WORKING RANGE

Model		KX71-3S
A	Max. digging height	ft. in. (mm) 15'5" (4700)
B	Max. dumping height	ft. in. (mm) 10'10" (3480)
C	Max. digging depth	ft. in. (mm) 9'7" (2910)
D	Max. vertical digging depth	ft. in. (mm) 6'10" (2090)
E	Max. digging radius at ground	ft. in. (mm) 15'9" (4810)
F	Max. digging radius	ft. in. (mm) 16'2" (4920)
G	Min. turning radius	W/o swing ft. in. (mm) 6'4" (1940)
		With swing ft. in. (mm) 5'2" (1580)
H	Min. tail turning radius	ft. in. (mm) 3'7" (1210)



LIFTING CAPACITY

LIFT POINT HEIGHT (ft)	LIFTING CAPACITY OVER-FRONT BLADE DOWN unit=1000lbs			LIFTING CAPACITY OVER-FRONT BLADE UP unit=1000lbs			LIFTING CAPACITY OVER-SIDE unit=1000lbs			
	LIFT POINT RADIUS (ft)			LIFT POINT RADIUS (ft)			LIFT POINT RADIUS (ft)			
	8	10	MAX	8	10	MAX	8	10	MAX	
6	1.43/1.43	1.21/1.21	1.10/1.10	1.43/1.43	1.21/1.21	1.10/1.10	1.43/1.43	1.21/1.21	1.07/1.02	
4	1.91/1.91	1.43/1.43	1.21/1.21	1.91/1.91	1.43/1.43	1.20/1.13	1.88/1.79	1.36/1.29	1.04/0.99	
2	2.29/2.29	1.63/1.63	1.30/1.30	2.11/2.00	1.52/1.44	1.17/1.11	1.79/1.71	1.32/1.25	1.02/0.97	
GL	0	2.43/2.43	1.74/1.74	1.36/1.36	2.06/1.96	1.49/1.41	1.15/1.09	1.75/1.66	1.29/1.22	1.00/0.95



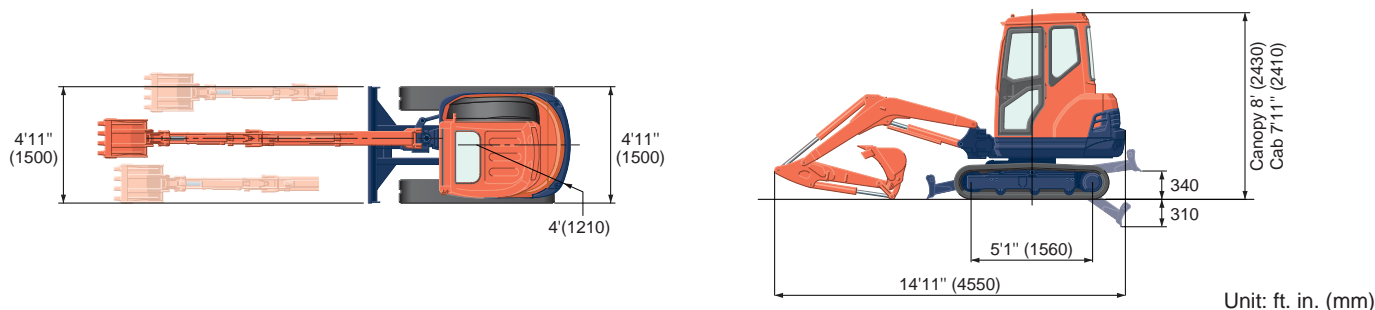
Machine with ROPS canopy and rubber crawler, without bucket

SPECIFICATIONS

Model		KX71-3S	
Type of ROPS / FOPS		Canopy / Cab	
Type of tracks		Rubber	
Engine	Model	V1505-E3	
	Output (SAEJ 1995 gross)	HP (kW)/rpm	27.5 (20.5) / 2300
	Output (SAEJ 1349 net)	HP (kW)/rpm	26.4 (19.7) / 2300
	Displacement	cu. in. (cc)	91.4 (1498)
Dimensions	Overall length	ft. in. (mm)	14'11" (4550)
	Overall height	Canopy / Cab ft. in. (mm)	8' (2430) / 7'11" (2410)
	Overall width	ft. in. (mm)	4'11" (1500)
	Min. ground clearance	ft. in. (mm)	11" (285)
Hydraulic system	Pump capacity	GPM (ℓ/min)	8.50 (32.2) Piston x 2 / 4.86 (18.4) Gear x 1
	Auxiliary hydraulic flow	GPM (ℓ/min)	13.4 (50.6)
	Max. breakout force	Bucket / Arm lbs. (kgf)	4760 (2160) / 3285 (1490)
Drive system	Travel speed	Low / High mph (km/h)	1.6 (2.6) / 2.8 (4.5)
	Max. traction force	Low speed lbs. (kgf)	7100 (3220)
	Tumbler distance	ft. in. (mm)	5'1" (1560)
	Crawler length	ft. in. (mm)	6'6" (1990)
	Shoe width	ft. in. (mm)	12" (300)
	Ground contact pressure	psi (kgf/cm ²)	3.9 (0.28) / 4.1 (0.29)
Swing system	Unit swing speed	rpm	9.4
	Boom swing angle	Left / Right deg.	80 / 60
Blade	Dimensions	Width / Height ft. in. (mm)	4'11" (1500) / 12" (300)
	Max. lift above ground	ft. in. (mm)	1'1" (340)
	Max. drop below ground	ft. in. (mm)	12" (310)
Hydraulic oil (reservoir/system)		gal (ℓ)	9.0 (34) / 13.2 (50)
Fuel reservoir		gal (ℓ)	11.9 (45)
Operating weight Including operator's weight 175 lbs.		Canopy / Cab lbs. (kgf)	6305 / 6550 (2866 / 2970)

The company reserves the right to change the above specifications without notice. This brochure is for descriptive purpose only. Please contact your local Kubota dealer for warranty information. For your safety, KUBOTA strongly recommends the use of a Rollover Protective structure (ROPS) and seat belt for almost all applications.

DIMENSIONS



©2007 Kubota Corporation

Kubota

KUBOTA CANADA LTD.

Head Office: 5900 14th Avenue, Markham, Ontario L3S 4K4 TEL: (905) 294-7477 FAX: (905) 294-6651
 Delta Distribution Centre: 7979 82nd Street, Delta, B.C. V4G 1L7 TEL: (604) 940-6061 FAX: (604) 940-6067
 Drummondville Distribution Office: 5705 Place Kubota, Drummondville, PQ, J2B 6V4 TEL: (819) 478-7151 FAX: (819) 478-7836

Visit our web site at: www.kubota.ca

