

# **MTZ - KIROVETS**

## **MTZ-Kirovets K744 (428 hp)®**

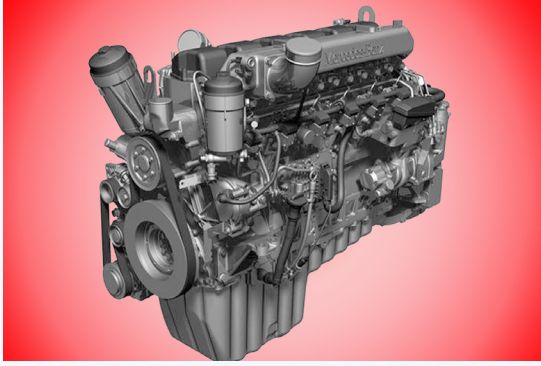
### **Articulated Tractors**

- Mercedes-Benz Tier 3 engine (no DEF liquid, no DPF).
- Bosch-Rexroth hydraulic system.
- Optimal weight distribution (52/48), ideal for pulling implements.
- 4 WD with automatic "no slip" differential locks.
- Proven design - Most popular high powered tractor in the world: over 500,000 units produced since 1962.
- Sun protected tinted glass provides panoramic view.
- Includes many extra features as part of the standard package: Partial Power Shift, Differential locks, Drawbar and more.
- Solid mechanical design of the power train.
- Easy to service and maintain with basic tools, available on most farms.
- Track Version model available.





## ● Mercedes-Benz Tier 3 engine: No DEF liquid, no DPF

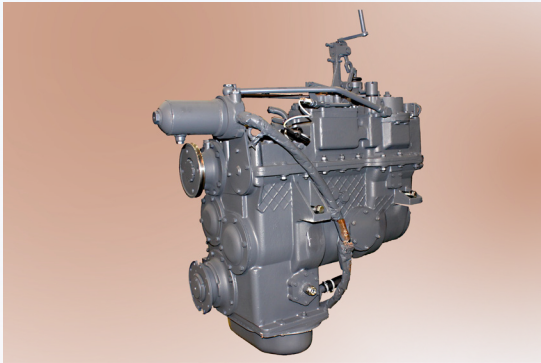


Mercedes-Benz diesel engine: 428 hp, 4 strokes, 6 cylinders in-line, turbocharged.

OM460LA provides dependable and cost effective performance.

- High torque at low RPM
- Good fuel efficiency
- Tier 3 compliant, no need for DEF liquid
- 600 hour intervals between oil changes

## ● Kirovets Transmission: 16F - 8R within 6 Ranges



Kirovets transmission is a mechanical transfer gearbox with hydraulic control. It provides the precise speed best suited for your operation.

The speed transmission offers 16 forward and 8 reverse gears by using 6 ranges (4 Forward, 2 Reverse). Within each range Power Shift allows smooth gear shift on the move without breaking the power flow. Gears are produced with ultra-fine tolerances, to ensure better fit and extended life expectancy of the transmission.

## ● 4 WD with self-locking “no slip” differential



Kirovets tractor driving axles include “no slip” self-locking differentials. They ensure unsurpassed off-road capability in the most challenging conditions.

Planetary reduction gears transfer the power directly to the wheels.

The benefits of such design among others is good accessibility for maintenance.

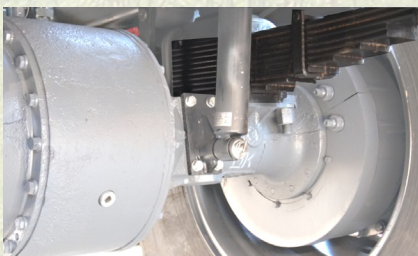
The braking system is air controlled.

## ● Smooth Ride and Shock Protection of main components

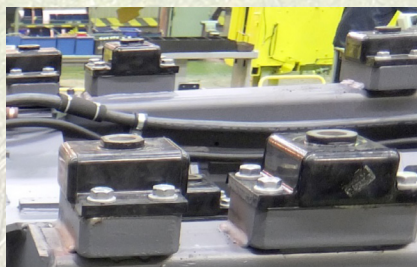
First thing users notice is the smooth ride of the tractor, because the MTZ-Kirovets K744 offers triple protection from shocks and impacts:

- Leaf spring suspension.
- Special rubber/metal mounting pads under cab.
- High Quality seat with adjustable suspension.

To reduce long term damage from shocks and vibration, the engine, transmission, cab and fuel tank are installed on frame using rubber/metallic pads which extends life expectancy of the components.



Leaf Spring Suspension



Rubber/Metallic Pads



High Quality Seat



## ● Proven design - Most popular high-powered tractor in the world

Petersburg Tractor Works (PTZ, manufacturer of the "Kirovets") was established in 1801, started producing licenced Fordson tractors in 1924. The plant has been mass producing the Kirovets model with total production since 1962 exceeding 500,000 units. Kirovets tractors have been in use on farms in the USA and Canada since the 80's. Factory original parts are available for all old models allowing the farmers to maximize their return on original investment.



## ● Operator's Station offers modern control center

Sun protected tinted glass allows panoramic view. Centrally located fully adjustable operator's seat. The Operator Station is comfortable, convenient, quiet and safe. New gear air shifter, puts all transmission controls in one panel under the right hand. No mechanical connection to gear box means lower vibration and quieter cab. Pressurised cab is cushioned, with cabin metal shielded by modern vibration-absorbing rubberized and soundproofing materials. Tilting and adjustable steering column. Heat, Air conditioner and radio are standard.



## ● Cat IV 3 pt hitch<sup>+</sup> and wheels options

3-point hitch<sup>+</sup>, category IV and Walterscheid type automatic lower link hooks for simple mounting of Implements. The multipurpose hitch is suitable for implements of category IV and III (optional adapters may be required) Optional 1,000 rpm PTO<sup>+</sup> is available.

To reduce soil compaction, there is an optional kit<sup>+</sup> for mounting Duals. You can also add Flotation Tires<sup>+</sup> or convert your current wheels to Crawler Tracks<sup>+</sup>. It takes about 2 hours for on farm conversion and then back again to regular wheels. No need for a second Tractor.



## ● Optimal weight distribution

Optimal weight distribution (52/48 ideal for pulling implements). High pull power combined with low ground pressure.

- Front frame weights.
- Rear frame weights.
- Drawbar is rated for 11,000 lbs.



**Front Weights**



**Rear Weights**



**Drawbar rated for 11,000 lbs**



# MTZ-Kirovets K744 - 428 hp

## Articulated Tractors

**GET MORE DONE WITH LESS.** Less hassle, less fuel, less maintenance – and more power. Simple and reliable Tier 3 engine does not require DEF liquid. Regular maintenance is less of a hassle as well, because it's performed standing at ground level, and less often than with any competitive tractor. Engine Oil only needs to be changed every 600 hours. And you use one oil for all hydraulic operations.



Track Version Available

### SPECIFICATIONS

|   |  |
|---|--|
| <b>Engine</b>   |  |
| Manufacturer  | Mercedes-Benz                                    |
| Model   | OM460LA.E3A/3                                    |
| Horsepower*   | 428 hp Engine                                    |
|   | 125/252/340 PTO, for PTO shafts                  |
|   | 35/45/55 mm (1¼"/1½"/1¾")                        |
| Displacement  | 12.82L (782.3 cu. in.)                           |
| Max. Torque, Nm@RPM   | 2000 @ 1300                                      |
| Rated Speed RPM   | 1800   |
| Type  | 6 cyl. In line, 24 valves, Tier 3A               |
| Aspiration  | Turbocharged / Air-to-Air aftercooled            |
| Fuel Consumption  | 151 gr/hp hr (205 gr/kWt hr)                     |
| Oil change interval   | 600 hours  |
| <b>Electrical Equipment</b>   |  |
| Alternator  | 28V 35/80A                                       |
| Starter rated voltage   | 24V 7,000 W                                      |
| Batteries   | 2 x 12V 190Ah 1100A(CCA)                         |
| <b>Transmission</b>   |  |
| Type  | Partial Powershift                               |
| No. of Gears  | 16F (in 4 Ranges) / 8R (in 2 Ranges)             |
| Speed Range*  | Forward: 3.70 to 30.0 km/h<br>(2.30 to 18.6 mph) |
| *Regular Wheels   | Reverse: 4.60 to 22.4 km/h                       |
| Tracks: speed is lower by 1.2x  | (2.85 to 13.9 mph)                               |
| <b>4WD</b>  |  |
| Front Axle  | Full-time  |
| Final Drive   | Planetary  |
| Rear Axle   | Manually engaged                                 |
| Differential  | Self-locking                                     |
| Suspension in front   | Leaf springs with double stroke shock absorbers  |
| <b>Cab</b>  |  |
| Built-in ROPS, thermo/vibro/noise insulated. Radio, Heat and Air Conditioning |  |
| <b>Capacities</b>   |  |
| Fuel Tank   | 1 Tank, 800 L (211.3 gal.)                       |
| Hydraulic System  | 175 L (46.2 gal.)                                |
| Cooling System  | 60 L (15.9 Gal.)                                 |
| <b>PTO<sup>+</sup> (Optional)</b>   |  |
| 1,000 rpm, 20 spine, 45 mm (1¾")  |  |

|  |                                       |   |
|--|---------------------------------------|---|
| <b>Hydraulic System</b>  |                                       | Closed Center, Load Sensitive (LS)  |
| Pressure Maximum   | 210 bar (3,046 psi)                   |   |
| At the coupler   | 185 bar (2,683 psi)                   |   |
| Standard Pump  | 180 L/min (47.6 gpm)                  |   |
| Optional Pump  | 300 L/min (79.3 gpm)                  |   |
| Standard Pump maximum available flow at single valve                                     | 90 L/min (23.8 gpm)                   |   |
| Optional Pump maximum available flow at single valve                                     | 140 L/min (37 gpm)                    |   |
| Remote Valves  | 4 free + 1 connected to 3pt hitch     |   |
| 3 point hitch <sup>+</sup>   | Cat IV                                |   |
| Lift capacity @ hitch point  | 9000 Kg (19,841.6 lbs)                |   |
| Return line from hydraulic motor, standard, low restriction, straight to hydraulic tank. |                                       |   |
| <b>Brakes</b>  |                                       | Air power - dry drum, 2 independent circuits plus spring actuated parking brake |
| <b>Tires</b>   |                                       |   |
| Front  | 30.5R32 (800/65R32)                   |   |
| Rear   | 30.5R32 (800/65R32)                   |   |
| <b>Weights</b>   |                                       |   |
| Weight (Singles/Duals <sup>+</sup> )   | 17,000/19,200 kg (37,478/42,240 lbs.) |   |
| Weight distribution (Singles)  |                                       |   |
| Front axle   | 8,800 kg (19,001 lbs.)                |   |
| Rear axle  | 8,200 kg (18,078 lbs.)                |   |
| Weight distribution (Duals <sup>+</sup> )  |                                       |   |
| Front axle   | 9,900 kg (21,826 lbs.)                |   |
| Rear axle  | 9,300 kg (20,503 lbs.)                |   |
|  |                                       |   |
| <b>Dimensions</b>  |                                       |   |
| Length<br>A  | Wheelbase<br>B                        | Ground Clearance<br>C   |
| Fordable Depth<br>D  | Width<br>E                            | Wheel Tread<br>F  |
|  |                                       | Height<br>G   |
| Minimum turning radius   |                                       |   |
| 7.35 m<br>24.1 ft  | 3.75 m<br>12.3 ft                     | 0.50 m<br>1.64 ft   |
| 1.00 m<br>3.28 ft  | 2.88 m<br>9.4 ft                      | 2.10 m<br>6.9 ft  |
|  |                                       | 3.88 m<br>12.7 ft   |
|  |                                       | 7.96 m<br>26.1 ft   |



Head Office: 3-1136 Centre St., Ste. 124, Thornhill, ON, L4J 3M8 Canada  
 Tel: 1-855-2GO-4MTZ (1-855-246-4689) Fax: 1-647-933-9066  
 E-mail: info@mtzequipment.com Web: www.mtzequipment.com

Warehouses: Canada - 2682 Highway 34 Hawkesbury, ON, K6A 2R2, Canada  
 USA - 2001 West Interstate 30, Sulphur Springs, TX, 75482, USA