

AGI 

AGI 

AGI 

GRAIN VACS

VRX[®] & VR12[®]



AGI GRAN VACS

All aspects of AGI grain vacs are examined, questioned and tested, both individually and as part of the whole system, not just in controlled environments, but also in the field. By utilizing VR Technology®, AGI grain vacs are able to get more capacity and longevity while reducing noise, debris and maintenance time.

Signature body

Specifically designed to minimize impact and maximize the auger feed - the drive shaft is mounted on the outside where you can access it. AGI grain vacs feature leak-proof cleanout doors with the ability to fully open without tools.

Chrome augers

AGI grain vacs use ¼"-thick, spring-loaded chrome flighting, allowing it to "float" on the bearings. This ensures correct line-up every time you fold the augers up and down.

The air system

The air system is designed for speed, efficiency and longevity. At a sound volume quieter than a tractor, three critical components work together producing high-pressure suction to pull grain into the machine: the fan, the air throttle and the air lock.

The fan

Lasts 25% longer than previous models. This means approximately 80 more hours of working time for the average user.

The air throttle

Automatically manages suction according to how much grain is flowing into the system. Suction can also be manually adjusted to suit the situation.

The air lock

The spring-loaded, two flap air lock is designed to be pushed as far as needed for the grain to exit the grain vac.



GRAIN VAC VRX & VR12

	VRX PTO DRIVE	VR12 PTO DRIVE
CAPACITY	up to 6,000 BPH	up to 10,000 BPH
WEIGHT	2950 lbs (1338 kg)	3300 lbs (1497 kg)
HITCH WEIGHT	432 lbs (196 kg)	600 lbs (272 kg)
AUGER DISCHARGE HEIGHT	14' (4.3m)	14' (4.3 m)
HYDRAULIC REQUIREMENTS	2100 PSI @ 2 GPM	2100 PSI @ 2 GPM
TRACTOR HP REQUIREMENT	85 HP	130 HP
TRANSPORT WIDTH	8' (2.44 m)	8' 2" (2.5 m)
TRANSPORT HEIGHT (WITHOUT EXHAUST)	8' 2" (2.48 m)	9' 6" (2.9 m)
TRANSPORT LENGTH	9' 10" (3 m)	11' (3.4 m)



The VRX sets the standard in grain vac technology and has capacity up to 6,000 BPH. The VRX sports 45-feet of 7-inch diameter hose. Combined with the telescoping inlet and the standing floor sweep, the VRX cleans up grain within a 49-foot radius from the base of the machine.

THE STANDARD HOSE PACKAGE INCLUDES:

- One bin load-out nozzle, 3' long
- One standing floor sweep with handles, 4' long
- One clean-up nozzle with wheels
- Two flexible stainless steel hose, 7' long each
- One flexible stainless steel hose, 3' long
- Two aluminum pipes, 7 ½' long each
- One aluminum pipe, 5' long
- One basketweave hose, 7 ½' long

The VR12 reaches up to 10,000 BPH with only 130 HP. The VR12 has 48-feet of 8-inch diameter hose. Combined with the telescoping inlet and the standing floor sweep, the VR12 cleans up grain within a 52-foot radius from the base of the machine.

THE STANDHOSE PACKAGE INCLUDES:

- 10" diameter telescoping inlet, 5' long
- One bin load-out nozzle, 3' long
- One standing floor sweep with handles, 4' long
- One clean-up nozzle with wheels
- One stainless steel flex hose, 3' long
- Four flexible stainless steel hose, 4' long each
- Two aluminum pipes, 7 ½' long each
- One aluminum pipe, 5' long
- One basketweave hose, 7 ½' long
- Three hose caddies

The dust collectors are easy to attach and give you flexibility to collect or direct debris.

DUST COLLECTOR FOR VRX

PART #: 45-113094

DUST COLLECTOR INSTALLED ONTO VRX FROM FACTORY

PART #: 45-113199

DUST COLLECTOR FOR VR12

PART #: 45-113266

DUST COLLECTOR INSTALLED ONTO VR12 FROM FACTORY

PART #: 45-113267

HOSES & ACCESSORIES

AGI grain vacs come equipped with more standard hose than any other. Together with the telescoping inlet and the standing floor sweep, the standard package cleans up grain within a 49 foot radius from the base of the machine with the VRX and a 52 foot radius with the VR12. To achieve the best capacity at any distance, cover much as possible with straight or smooth pieces like aluminum pipes and elbows, then add flexible portions like the stainless steel flex hoses and the bendahose where needed.

Aluminum pipe

Aluminum pipe provides the least resistance and allows your system to maintain optimum performance.



	PART #
7" x 4 1/2' with ends	38-105259
7" x 7 1/2' with ends	38-105260
7" x 10' with ends	38-104312
8" x 5' with ends	55-111081
8" x 8' with ends	55-111079
8" x 10' with ends	38-110657

Flex pipe

Stainless steel flex hoses provide some flexibility while keeping your capacity high.



	PART #
6" x 6' steel with ends	20-101442
6" x 6' steel without ends	P3422-06-0001
7" x 2 1/2' stainless steel without ends	P3422-07-0002
7" x 6' 9" stainless steel without ends	P3422-07-0001
7" x 3' stainless steel with ends	38-105143
7" x 7' stainless steel with ends	38-104112
8" x 2 1/2' stainless steel with ends	38-111569
8" x 4' stainless steel with ends	45-113184
8" x 6' 8" stainless steel without ends	P3422-08-0002
8" x 7' stainless steel with ends	38-110535
10" x 3' 4" stainless steel with ends	45-113282

Bendahose

The bendahose is designed to give extra reach along with flexibility.



	PART #
7" x 4' bendahose	38-112190
8" X 4' bendahose	55-112193

Basketweaves

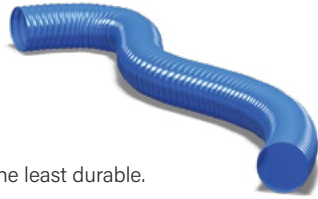
Basketweaves are durable clean-up hoses, with a little more weight and less flexibility than durathane options.



	PART #
6" x 12 1/2' basketweave hose without ends	P3420-06-0150
7" x 12 1/2' basketweave hose without ends	P3420-07-0018
7" x 7' basketweave hose without ends	P3420-07-0039
7" x 8' basketweave hose with ends	45-113081
8" x 7' basketweave hose without ends	P3420-08-0080
8" x 8' basketweave hose with ends	38-111393

Durathane hose

Durathane offers the most flexibility but is the least durable.



	PART #
6" x 12' durathane hose without ends	P3420-06-0012
7" x 8' durathane hose without ends	P38-112180
7" x 12 1/2' durathane hose without ends	P38-112179
7" x 25' durathane hose without ends	P3420-07-0042

Hose cover (black)

To help this lightweight hose last longer it can be wrapped in a nylon cover.

Cover is applied by holding the hose off the floor through 8 tighteners (6190-00-0128) or by a hose caddy. See hose caddy on the next page.



P3420-07-0045
(sold per foot)

Elbows

Steel elbows get around corners without compromising soft hoses, allowing material to flow as smoothly and quickly as possible. Use them with hoses to extend handling reach or to redirect the exhaust.

8" 45° elbow kit
PART #: 55-112771



7" 45° elbow kit
PART #: 38-107211

8" 45° exhaust elbow
PART #: 55-111121

8" 90° elbow kit
PART #: 55-112729



8" 90° elbow kit
PART #: 55-111206

7" 90° elbow kit
PART #: 38-107210



8" x 11" exhaust adapter
PART #: 55-111207

Transitions

Transitions available in 4, 6, 7 and 8 inch sizes.

4" male to 7" male
PART #: 38-10749

6" male to 7" female
PART #: 38-104690

7" male to 8" female
PART #: 38-107474

7" male to 6" female
PART #: 38-103897

8" male to 7" female
PART #: 38-110650

VR12 clean-up transition
PART #: 45-113247



Hose ends

6" male hose end
PART #: **20-101286

7" male hose end
PART #: **38-103856

8" male hose end
PART #: **38-110537

7" female hose end for aluminum pipe only
PART #: P5195-7003

8" female hose end for aluminum pipe only
PART #: P55-112660

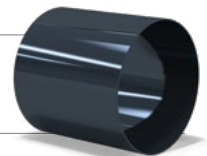
6" female hose end
PART #: **20-101427

7" female hose end
PART #: **38-111291

8" female hose end
PART #: **55-112581

* Requires 8" hose tightener (P6190-00-0128)

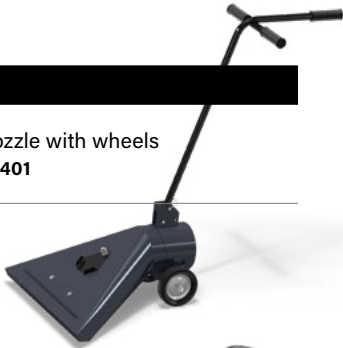
** Requires 6" & 7" hose tightener**
(P6190-00-0104)



NOZZLES & SWEEPS

Nozzles

7" clean-up nozzle with wheels
PART #: **38-108401**



7" aluminum bin load-out nozzle
PART #: **38-108923**



8" aluminum bin load-out nozzle
PART #: **55-111828**

*Use the bin load-out nozzle when you want to get maximum efficiency when loading out of a full bin

Sweeps

Use the floor sweep to clean up the bin floor in one swoop. This nozzle allows maximum efficiency when cleaning the bottom of a bin.

6" floor sweep
PART #: **38-111044**

7" floor sweep optimizer
PART #: **38-112491**



7" floor sweep
PART #: **38-108959**

8" floor sweep optimizer
PART #: **38-112494**

8" floor sweep
PART #: **38-110676**

Floor sweep handles kit
PART #: **38-110798**



**Shown with optional handles

Clamps

Clamps work best when sitting on top - not dragging beneath the hoses.

8" pull ring/clamp
PART #: **P2391-00-0002**



8" clamp rubber seal
PART #: **P2391-00-0004**

8" hose tightener
PART #: **P6190-00-0128**

6" & 7" hose tightener
PART #: **P6190-00-0104**



Miscellaneous

Hose caddy
PART #: **38-112204**

Dragging hoses across a floor can be a heavy chore. Simply attach the hose caddy to the bottom of the hose and it will glide effortlessly across the floor.



14" discharge spout
PART #: **P22A175**

7" - 3' to 6' collapsible tubes
PART #: **38-104966**

8" - 4' to 6' collapsible tube
PART #: **55-111876**

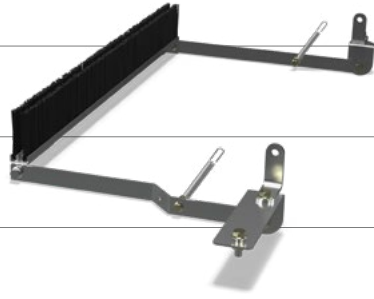
Specialities

Drum brush kit for VR12
PART #: 45-113221

Drum brush kit for VRX
PART #: 45-112996

Drum brush kit for 3700
PART #: 55-111222

Drum brush kit for 552-2700
PART #: 38-104551



7" bend-a-spin
PART #: 38-113030

The bend-a-spin is a handy combo that sets up the rest of the hoses to rotate in both directions.



8" bend-a-spin
PART #: 45-113174



Transport light kit for VRX and VR12
PART #: 45-113093

Air throttle kit
PART #: 38-112798

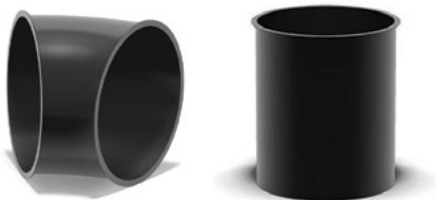
The air throttle kit can be added to any 2700 model machines. Reduces horsepower requirement and improves grain flow when moving lighter grains.



Exhaust hose kit

Direct dust in between bins, keeping it low to the ground and away from bystanders.

PARTS	VRX VR12	2700	3700
8" 45° exhaust elbow PART #: 55-111121		Two (2)	One (1)
8" clamp rubber seal PART #: P2391-00-0004		Three (3)	Two (2)
8" pull ring/clamp PART #: P2391-00-0002		Three (3)	Two (2)
8" x 11' exhaust adapter PART #: 55-111207		One (1)	One (1)



Exhaust for grain vac 3700

Troubleshooting tips

SHORT

Position the grain vac as close to the source of the material as possible. Keep the length of piping short. The shorter the distance, the less piping friction and the greater the grain vac capacity.

SMOOTH

Smooth pipes (interior walls) reduce resistance to air and grain movement. Where possible, use aluminum pipes first, then stainless steel flex pipes. Last of all use soft hose (for clean up only) as light-weight hose creates more friction.

STRAIGHT

A ninety degree bend in the piping is the equivalent of adding twenty feet or more of straight piping. Reduce bends in the piping as much as possible and keep the grain moving straight.

SLOPE

Lay out the piping as straight as possible over the length of run. Grain does not easily move uphill so minimize slopes to reduce resistance of material flow.

SEAL

Air leaks in the grain vac reduce capacity at the nozzle end of the pipe. Keep all neoprene foam seals (on the auger flanges, body doors and ports) in good condition. Keep the auger clean-out door and hose clamps snug in order to ensure a good air seal.

SUCTION

Grain only moves when air moves so ensure there's no lose of suction. The air throttle automatically manages suction, but it can be manually adjusted.

SPEED

AGI grain vacs are designed to run at top capacity when the PTO is at its maximum speed of 1000 RPM. Grain vac speed can be checked using the standard equipped tachometer.

SWEEP

Once in the bin use the light aluminum floor sweep. First, draw down large piles. Then, in a pattern of semicircular "sweeps" across the floor, add hose lengths as required to increase the sweeping diameter.

SPARKLE

To ensure good airflow keep the blower blades, inlet, exhaust piping, flighting and drum screen clean and free of buildup. Remove debris and perform maintenance as described in the operator's manual.





AGI is a global leader in supplying farm and commercial customers with the manufacturing, planning, and engineering of full equipment solutions for grain, seed, fertilizer, feed, and food. AGI's expertise enables the storage, blending, mixing, conveying, conditioning, processing, and protection of agricultural products and inputs worldwide.

Your safety is our highest priority.

Please read and understand the operator's manual and safety decals before using. Use and maintain products properly, and do not modify. Keep guards in place when operating and follow all product manuals and safety decals. For all AGI products, if guards, safety decals, or manuals are damaged or missing, contact your AGI sales or dealer representative for replacements. Images and information contained in this brochure are presented for general information.

VRX, VR12, VR Technology, AGI and the rolling hills logo are trademarks of Ag Growth International Inc.

198 Commerce Drive, Winnipeg, Manitoba, Canada R3P 0Z6

P 855.432.1990 | **E** csr.portable@aggrowth.com

     @aggrowthintl

AGGROWTH.COM