


# GTX™ 170 / 230 / 300

Comfort, control and power are always in style.

## KEY FEATURES

- Rotax® 1630 ACE™ – 170/230/300
- ST3™ Hull
- iDF – Intelligent Debris-Free Pump System
- iBR® – Intelligent Brake & Reverse
- VTS™ – Variable Trim System
- LinQ® attachment system
- Boarding ladder
- Direct-access front storage
- Watertight phone compartment
- Tech Package (optional): BRP Audio – Premium System & full color 7.8" wide display, USB port

## CAPACITY

Rider Capacity	
Weight Capacity	600 lb/272 kg
Fuel Capacity	18.5 US gal/70 L
Glove Box	0.8 US gal/2.9 L
Front Bin	25.3 US gal/96 L
Storage Capacity – Total	26.1 US gal/98.9 L

## DIMENSIONS

Length (bumper to bumper)	135.9"/345.1 cm
Width	49.2"/125 cm
Height	44.9"/114 cm

## HULL

Type	ST3 Hull
Material	Fiberglass

## OTHER FEATURES

- Ergolock™ two-piece seat with stepped design
- Seat strap
- RF D.E.S.S.™ key\*\*
- Wide-angle mirrors
- Handle grips with palm rest
- Footwell carpets
- Large swim platform
- Tilt steering
- Ski tow eye



 Abyss Blue and Gulfstream Blue

## ROTAX ENGINE

	1630 ACE – 170	1630 ACE – 230	1630 ACE – 300
Model	GTX 170	GTX 230	GTX 300
Horsepower	170 hp	230 hp	300 hp
Intake System	Naturally aspirated	Supercharged with external intercooler	
Displacement	1,630 cc		
Cooling	Closed-Loop Cooling System (CLCS)		
Reverse System	Electronic iBR*		
Fuel Type	87 octane	91 octane	
Throttle System	iTCTM (Intelligent Throttle Control)		
Exhaust System	D-Sea-Bel™ system		

## GAUGE

Type of Gauge	Large panoramic 7.8" wide LCD display (with Tech Package) 7.6" wide digital display	
Main Functions	<ul style="list-style-type: none"> <li>• BRP Connect (opt.)</li> <li>• Music (opt.)</li> <li>• Navigation (opt.)</li> <li>• Bluetooth† connectivity (opt.)</li> <li>• Speedometer</li> <li>• RPM</li> </ul>	<ul style="list-style-type: none"> <li>• VTS</li> <li>• Fuel consumption (opt.)</li> <li>• Fuel autonomy</li> <li>• Vehicle hours</li> </ul>
iTC System – Mode	<ul style="list-style-type: none"> <li>• Sport mode</li> <li>• ECO® mode</li> </ul>	<ul style="list-style-type: none"> <li>• Slow mode</li> <li>• Speed regulator</li> </ul>

## WEIGHT

	776 lb/352 kg	809 lb/367 kg	806 lb/366 kg
Dry Weight	796 lb/361 kg (with Tech Package)	829 lb/376 kg (with Tech Package)	848 lb/385 kg (with Tech Package)

## WARRANTY

BRP limited warranty covers the watercraft for one year.

\*Electronic brake, neutral and reverse.

**FEATURE HIGHLIGHTS**



**iDF – Intelligent Debris-Free Pump System**

An innovative, industry-first system that allows you to free your pump of weeds and debris with intuitive handlebar-activated controls.



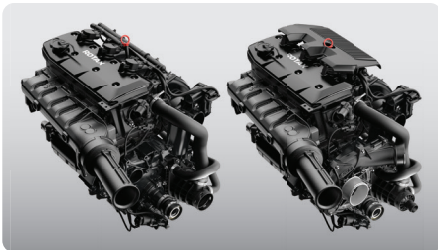
**Direct-Access Front Storage**

All your gear within arm's reach thanks to a 25.3 US gal (96 L) front storage area, easily accessible from a seated position. Simply raise the handlebars to access essentials for any adventure.<sup>1</sup>



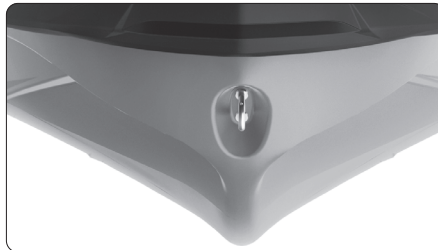
**Swim Platform with Integrated LinQ System**

Exclusive quick-attach system on the largest swim platform in the industry allows for easy installation of storage accessories.



**Rotax 1630 ACE – 170 / 230 / 300**

The Rotax 1630 ACE engine block is offered in three configurations on this versatile platform. The 170 hp boasts naturally aspirated punch with optimal fuel economy. Both 230 hp and 300 hp supercharged versions allow you to level up the performance to your liking.



**ST3 Hull**

An innovative hull that sets the benchmark for rough water handling, stability and offshore performance.



**Tech Package (optional)**

Levels up entertainment and functionality on the water. It includes a factory-installed, truly waterproof Bluetooth audio system, a 7.8" color display and a USB port.

<sup>1</sup>Bin organizers are not included.

©2024 Bombardier Recreational Products Inc., (BRP). All rights reserved. ®, TM and the BRP logo are trademarks of Bombardier Recreational Products Inc. or its affiliates. In the USA, products are distributed by BRP US Inc. †All other trademarks are the property of their respective owners. BRP reserves the right to discontinue or change specifications, prices, designs, features, models or equipment without incurring obligation. Some models shown may include optional equipment. Product performance may vary depending on external factors. All competitive comparisons are based on published manufacturer specifications at time of creating this document. The warranty is subject to the exclusions, limitations of liabilities and all other terms and conditions of BRP's standard limited warranty. Read the operator's guide and safety instructions. All models of PWC are meant to be used by drivers of age 16 and older. Observe applicable laws and regulations. Always wear appropriate protective clothing, including a personal flotation device and neoprene shorts. Riding and alcohol/drugs don't mix. Printed in Canada.