

# BOSS

SNOWFLOW

2024-25 SEASON | BOSS EQUIPMENT



# WHATEVER

Winter's wrath can bring communities to a halt, leaving the task for contractors who require dependable solutions to RESTORE ORDER. Our team innovates and produces solutions to enable snow and ice contractors to achieve more. Because, at BOSS, we do Whatever It Takes to BACK YOU UP.

<b>PRODUCTS AND TECHNOLOGY . . . . .</b>	<b>04</b>	<b>HEAVY EQUIPMENT . . . . .</b>	<b>42</b>
<b>TRUCK EQUIPMENT SNOW REMOVAL . . . . .</b>	<b>06</b>	LOADER BOX PLOWS . . . . .	44
DXT . . . . .	08	BACKHOE BOX PLOWS . . . . .	45
XT . . . . .	10	SK BOX PLOWS . . . . .	46
EXT. . . . .	11	SK-R BOX PLOWS . . . . .	47
SUPER-DUTY FULL-TRIP. . . . .	12	SKID STEER TRIP-EDGE PLOWS. . . . .	48
SUPER-DUTY TRIP-EDGE . . . . .	13	TRACTOR PLOWS & SPREADERS . . . . .	49
HD+ . . . . .	14	EXACT PATH® FOR TRACTORS. . . . .	50
DXT HEAVY-DUTY . . . . .	15	QUICKCUBE® . . . . .	51
HTX STRAIGHT-BLADE . . . . .	16	<b>COMPACT EQUIPMENT . . . . .</b>	<b>52</b>
HTX V-PLOW . . . . .	17	SNOWPLOWS . . . . .	54
DRAG PRO® 180Z . . . . .	18	EXACT PATH® . . . . .	56
DRAG PRO® . . . . .	19	VBX 3000 . . . . .	57
USER-FOCUSED FEATURES . . . . .	20	SHOVELS AND PUSH PAL . . . . .	58
<b>TRUCK EQUIPMENT ICE CONTROL . . . . .</b>	<b>22</b>	WBX . . . . .	59
VBX+. . . . .	24	<b>SPREADER MATERIAL</b>	
VBX . . . . .	26	<b>APPLICATION GUIDE . . . . .</b>	<b>60</b>
VBX+ VS. VBX COMPARISON . . . . .	27	<b>TRUCK EQUIPMENT</b>	
TGS . . . . .	28	<b>PARTS &amp; ACCESSORIES . . . . .</b>	<b>62</b>
ICE CONTROL CONTROLLERS. . . . .	30	<b>ICE CONTROL PARTS &amp; ACCESSORIES . . . . .</b>	<b>66</b>
LIQUID STORY . . . . .	32	<b>COMPACT VEHICLE PARTS &amp; ACCESSORIES . . . . .</b>	<b>68</b>
BENEFITS OF LIQUIDS. . . . .	33	<b>BOSS OWNERS GROUP . . . . .</b>	<b>70</b>
GENESIS SERIES . . . . .	34		
LEGACY SERIES . . . . .	36		
BRINE MAKERS . . . . .	39		
LIQUID CONTROLLERS . . . . .	40		
ELEVATE YOUR LIQUID IQ . . . . .	41		

# R IT TAKES





# PAVING THE WAY FORWARD

## First With Standard LED Technology

The SL3 LED Headlights come standard on all BOSS truck plows. Plow in a whole new light with best-in-class DOT-compliant, 100% LED lighting, integrated with Ice Shield Technology™ to help prevent snow and ice build-up on the lens. (Excludes DRAG PRO®)

## Fleet-Flexible Front Mounted Undercarriage

Quickly and easily swap between snowplows in your BOSS fleet. For complete details, see your BOSS Dealer.

## Attach With Ease

Flip, plug, click ... just three easy steps to attach your plow with the SmartHitch® attachment system. (Excludes DRAG PRO®)

## Superior Hand Controls

Our high-tech, ergonomic controls feature large, backlit buttons for ease of use.

## Simple Hydraulics

At the heart of every BOSS snowplow is a simple, high-performance hydraulics package with fewer valves and coils than the competition. It is so advanced, it delivers unmatched speed and reliability

## Blade Strength

All BOSS snowplows use a diagonal cross-bracing design, which helps to reinforce the blade structure, reducing blade twisting and increasing overall strength.

## D-Force®

Enhance your backdrag performance with D-Force®. D-Force® maintains consistent hydraulic down force through the use of a hydraulic accumulator. Available for select straight-blade and DXT truck plows. (Excludes EXT, HTX V-Plow, XT, HD+, Trip-Edge and DRAG PRO® plows.)

## SmartShield® Paint

Delivers superior corrosion protection and a long-lasting, high-gloss shine.



BOSS UP

# TRU

## SNOW REMOVAL EQUIPMENT

The only thing you can predict in the winter is that it will be unpredictable. That's why we design, test and innovate our products constantly so that you can be certain BOSS has your back. We don't just make plows, we do Whatever It Takes to BACK YOU UP.



CK



# DXTT

Dual-Trip Power and Performance.

## Standard Features

---

- SmartLight™ 3 LED Headlight System
- Reinforced Moldboard
- Heavy-Duty Push Frame and Center Section
- Patented Dual-Trip Design
- ½" x 6" Long-Lasting, AR400 Durable Base Angle
- Simple Hydraulics
- Patented Snow Catcher
- SmartLock® Cylinders

## Optional Accessories

---

- Snow Deflector
- Cast-Iron Plow Shoes
- Caster Wheels
- BOSS Joystick Controller
- Wing Extensions (8'2" Model Only)
- Turf Defender
- ½" AR450 Cutting Edge





SEE IT IN ACTION



## Product Specs

### 8'2" DXT

Steel | Poly | Stainless

98" | 101"

Straight-Blade Width | Curb Guard Width\*

88" | 88"

V-Position Blade Width | Curb Guard Width\*

81" | 93"

Scoop-Position Blade Width | Curb Guard Width\*

30" center; 38" ends  
Blade Height

868 lbs<sup>†</sup> | 878 lbs<sup>†</sup> | 920 lbs<sup>†</sup>  
Plow Weight\*\*

SmartHitch® 2  
Attachment System

4WD, ¾- and 1-Ton Trucks  
Vehicle Application

### 9'2" DXT

Steel | Poly | Stainless

110" | 113"

Straight-Blade Width | Curb Guard Width\*

101" | 99"

V-Position Blade Width | Curb Guard Width\*

92" | 103"

Scoop-Position Blade Width | Curb Guard Width\*

30" center; 38" ends  
Blade Height

925 lbs<sup>†</sup> | 935 lbs<sup>†</sup> | 977 lbs<sup>†</sup>  
Plow Weight\*\*

SmartHitch® 2  
Attachment System

4WD, ¾- and 1-Ton Trucks  
Vehicle Application

\*Maximum product width. \*\*Plow weight does not include vehicle mount weight. †Vehicle mount weight range: 75-105 lbs.



LEARN MORE ABOUT TRIPPING



# XT

## Full-Trip V-Plow Performance.

### Standard Features

- SmartLight™ 3 LED Headlight System
- Reinforced Moldboard
- Heavy-Duty Push Frame and Center Section
- Full Moldboard Trip Design
- ½" x 6" AR450 Cutting Edge
- Patented Snow Catcher
- SmartLock® Cylinders
- Simple Hydraulics
- Moldboard Options

### Optional Accessories

- Snow Deflector
- Cast-Iron Plow Shoes
- Caster Wheels
- BOSS Joystick Controller
- Wing Extensions
- Formed Urethane Cutting Edges
- Backdrag Edge
- Turf Defender

### Product Specs

#### 8'2" XT

Steel | Poly | Stainless

98" | 102"

Straight-Blade Width | Curb Guard Width\*

88" | 90"

V-Position Blade Width | Curb Guard Width\*

81" | 93"

Scoop-Position Blade Width | Curb Guard Width\*

30" center; 38" ends  
Blade Height

785 lbs† | 795 lbs† | 823 lbs†  
Plow Weight\*\*

SmartHitch® 2  
Attachment System

4WD, ¾- and 1-Ton Trucks  
Vehicle Application

#### 9'2" XT

Steel | Poly | Stainless

110" | 114"

Straight-Blade Width | Curb Guard Width\*

99" | 100"

V-Position Blade Width | Curb Guard Width\*

92" | 103"

Scoop-Position Blade Width | Curb Guard Width\*

30" center; 38" ends  
Blade Height

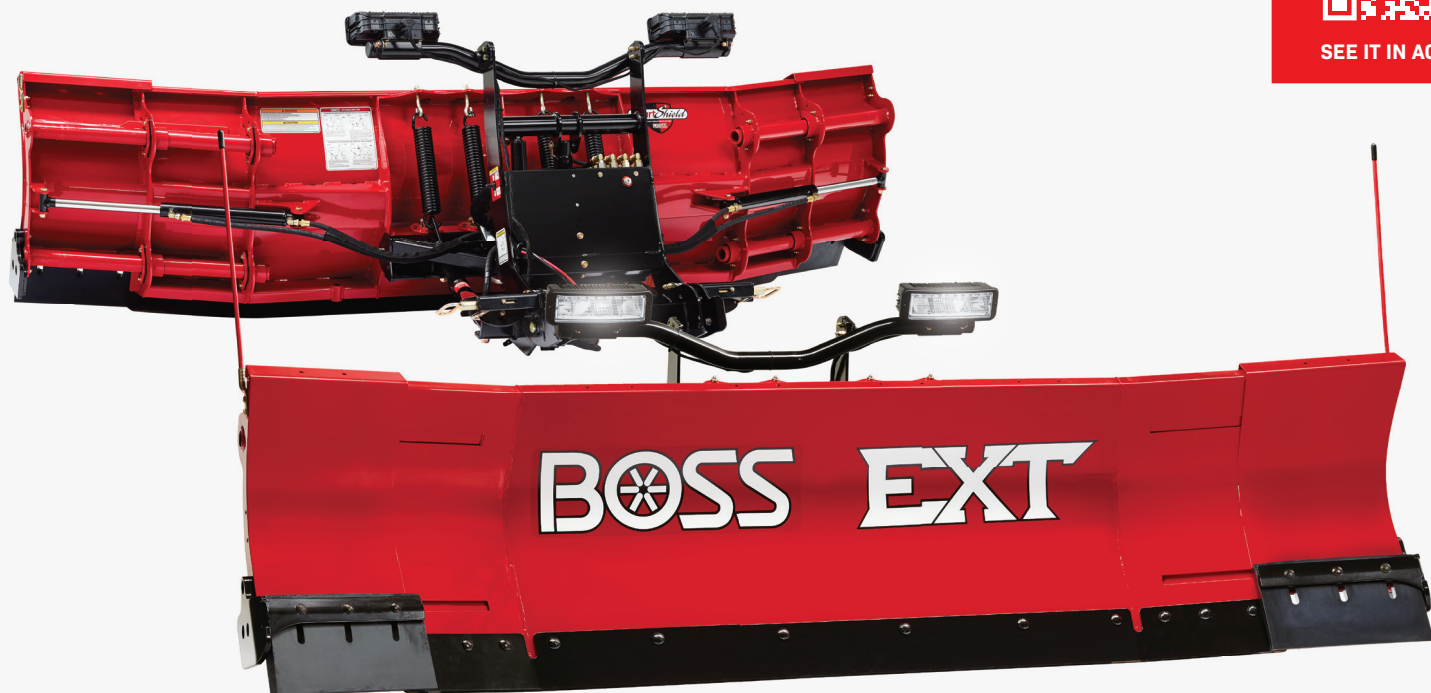
842 lbs† | 852 lbs† | 882 lbs†  
Plow Weight\*\*

SmartHitch® 2  
Attachment System

4WD, ¾- and 1-Ton Trucks  
Vehicle Application



SEE IT IN ACTION



# EXT

Expandable Pitched-Forward Power.

## Standard Features

- SmartLight™ 3 LED Headlight System
- Reinforced Moldboard
- Heavy-Duty Push Frame and Attachment Bar
- Expandable, Fully Hydraulic Pitched-Forward Wings
- Open-Back Design
- ½" x 6" AR450 Cutting Edge
- 1½" 60-Durometer Urethane Wing Cutting Edges
- Blade Shock Absorber

## Optional Accessories

- Snow Deflector
- Cast-Iron Plow Shoes
- Caster Wheels
- BOSS Joystick Controller

## Product Specs

**8' RETRACTED**  
**10' EXPANDED**

Steel

96"

Blade Width (Retracted)

120"

Blade Width (Extended)

30"

Blade Height

970 lbs<sup>†</sup>

Plow Weight<sup>\*</sup>

SmartHitch® 2  
Attachment System

4WD, ¾- and 1-Ton Trucks  
Vehicle Application

<sup>\*</sup>Plow weight does not include vehicle mount weight. <sup>†</sup>Vehicle mount weight range: 75-105 lbs.



LEARN MORE ABOUT TRIPPING



# SUPER-DUTY FULL-TRIP

Tough, Reinforced Straight-Blade Performance.

## Standard Features

- SmartLight™ 3 LED Headlight System
- Cast-Iron Plow Shoes
- Heavy-Duty Push Frame and Attachment Bar
- Reinforced Moldboard
- ½" 1080 Steel Cutting Edge
- Full Moldboard Trip Design
- Blade Shock Absorber

## Optional Accessories

- Plow Wings
- Curb Guards
- Caster Wheels
- Snow Deflector
- Turf Defender\*
- BOSS Joystick Controller
- Urethane Cutting Edge
- Backdrag Edge

## Product Specs

7'6"	8'	8'6"	9'
<b>FULL-TRIP</b>	<b>FULL-TRIP</b>	<b>FULL-TRIP</b>	<b>FULL-TRIP</b>
Steel   Poly <sup>†</sup>	Steel   Poly <sup>†</sup>	Steel	Steel
90"	96"	102"	108"
Straight-Blade Width	Straight-Blade Width	Straight-Blade Width	Straight-Blade Width
29"	29"	29"	29"
Blade Height	Blade Height	Blade Height	Blade Height
680 lbs <sup>†</sup>   706 lbs <sup>†</sup>	698 lbs <sup>†</sup>   722 lbs <sup>†</sup>	720 lbs <sup>†</sup>	742 lbs <sup>†</sup>
Plow Weight**	Plow Weight**	Plow Weight**	Plow Weight**
SmartHitch® 2	SmartHitch® 2	SmartHitch® 2	SmartHitch® 2
Attachment System	Attachment System	Attachment System	Attachment System
4WD, ¾- and	4WD, ¾- and	4WD, ¾- and	4WD, ¾- and
1-Ton Trucks	1-Ton Trucks	1-Ton Trucks	1-Ton Trucks
Vehicle Application	Vehicle Application	Vehicle Application	Vehicle Application

<sup>†</sup>7'6" and 8' Poly Super-Duty available in limited quantities for the 2024-25 season.



LEARN MORE ABOUT TRIPPING



# SUPER-DUTY TRIP-EDGE

Proven Trip-Edge Performance and Reliability.

## Standard Features

- SmartLight™ 3 LED Headlight System
- Cast-Iron Plow Shoes
- Heavy-Duty Push Frame and Attachment Bar
- Reinforced Moldboard
- ½" 1080 Steel Cutting Edge
- Trip-Edge Design
- Adjustable Trip Springs

## Optional Accessories

- Plow Wings
- Curb Guards
- Caster Wheels
- Snow Deflector
- Turf Defender
- BOSS Joystick Controller

## Product Specs

### 7'6" TRIP-EDGE

Steel

90"  
Straight-Blade Width

31"  
Blade Height

772 lbs†  
Plow Weight\*

SmartHitch® 2  
Attachment System

4WD, ¾- and 1-Ton Trucks  
Vehicle Application

### 8' TRIP-EDGE

Steel | Stainless

96"  
Straight-Blade Width

31"  
Blade Height

788 lbs† | 849 lbs†  
Plow Weight\*

SmartHitch® 2  
Attachment System

4WD, ¾- and 1-Ton Trucks  
Vehicle Application

### 9' TRIP-EDGE

Steel | Stainless

108"  
Straight-Blade Width

31"  
Blade Height

828 lbs† | 897 lbs†  
Plow Weight\*

SmartHitch® 2  
Attachment System

4WD, ¾- and 1-Ton Trucks  
Vehicle Application

\*Plow weight does not include vehicle mount weight. †Vehicle mount weight range: 75-105 lbs.



SEE IT IN ACTION



# HD+

## Enhanced Blade Strength and Curl.

### Standard Features

- SmartLight™ 3 LED Headlight System
- Heavy-Duty Push Frame and Attachment Bar
- Reinforced Moldboard
- Full Moldboard Trip Design
- Dual Shock Absorbers
- Cast-Iron Plow Shoes
- ½" x 6" 1080 Steel Cutting Edge

### Optional Accessories

- Snow Deflector
- BOSS Joystick Controller
- Carbide Cutting Edges
- Urethane Cutting Edge
- Curb Guards

### Product Specs

#### 9' HD+

Steel

108"  
Straight-Blade Width

35"  
Blade Height

1,275 lbs<sup>†</sup>  
Plow Weight\*

RT3 (SmartHitch® 2 optional)  
Attachment System

Medium-Duty Trucks  
14,000-27,000 GVWR  
Vehicle Application

#### 10' HD+

Steel

120"  
Straight-Blade Width

35"  
Blade Height

1,350 lbs<sup>†</sup>  
Plow Weight\*

RT3 (SmartHitch® 2 optional)  
Attachment System

Medium-Duty Trucks  
14,000-27,000 GVWR  
Vehicle Application



SEE IT IN ACTION



# DXT HEAVY-DUTY

Dual-Trip Power. Heavy-Duty Strength.

## Standard Features

- SmartLight™ 3 LED Headlight System
- Heavy-Duty Push Frame and Attachment Bar
- Reinforced Moldboard
- Patented Dual-Trip Design
- ½" x 6" Long-Lasting, AR400 Durable Base Angle

## Optional Accessories

- Snow Deflector
- BOSS Joystick Controller
- Cast-Iron Plow Shoes
- Caster Wheels
- Turf Defender
- ½" AR450 Cutting Edge

## Product Specs

### 10' HEAVY-DUTY DXT Steel

120" | 124"  
Straight-Blade Width | Curb Guard Width\*

107" | 108"  
V-Position Blade | Curb Guard Width\*

102" | 111"  
Scoop-Position Blade Width | Curb Guard Width\*

35" at center; 45" at ends  
Blade Height

1,205 lbs†  
Plow Weight\*\*

SmartHitch® 2  
Attachment System

Medium-Duty Trucks  
14,000-27,000 GVWR  
Vehicle Application



SEE IT IN ACTION



# HTX STRAIGHT

Full-Size Strength for Light-Duty Trucks.

## Standard Features

- SmartLight™ 3 LED Headlight System
- Full Moldboard Trip Design
- Strong, Durable Push Frame & Attachment Bar
- Simple Hydraulics
- Reinforced Moldboard
- ¼" 1080 Steel Cutting Edge for 7' Straight-Blade
- ⅜" 1080 Steel Cutting Edge for 7'6" Straight-Blade

## Optional Accessories

- Cast-Iron Plow Shoes
- Urethane Cutting Edge
- Snow Deflector
- Caster Wheels
- Backdrag Edge
- Turf Defender

## Product Specs

### 7' HTX STRAIGHT

Steel | Poly | Stainless

84"

Straight-Blade Width | Curb Guard Width

26"

Blade Height

393 lbs<sup>†</sup> | 367 lbs<sup>†</sup> | 393 lbs<sup>†</sup>

Plow Weight\*

SmartHitch® 2  
Attachment System

Light-Duty, 4WD and  
½-Ton Trucks & SUVs  
Vehicle Application

### 7'6" HTX STRAIGHT

Steel | Poly | Stainless

90"

Straight-Blade Width | Curb Guard Width

26"

Blade Height

440 lbs<sup>†</sup> | 416 lbs<sup>†</sup> | 440 lbs<sup>†</sup>

Plow Weight\*

SmartHitch® 2  
Attachment System

Light-Duty, 4WD and  
½-Ton Trucks & SUVs  
Vehicle Application





SEE IT IN ACTION

# HTX V-PLOW

Power & Innovation for Light-Duty Trucks.

## Standard Features

- SmartLight™ 3 LED Headlight System
- Full Moldboard Trip Design
- Strong, Durable Push Frame & Center Section
- Simple Hydraulics
- Reinforced Moldboard
- SmartLock® Cylinders
- 3/8" x 6" AR450 Cutting Edge
- Patented Snow Catcher

## Optional Accessories

- Cast-Iron Plow Shoes
- Urethane Cutting Edge
- Snow Deflector
- Caster Wheels
- Backdrag Edge
- Turf Defender\*

## Product Specs

### 7'6" HTX V-PLOW

Steel | Stainless\*\*

90"

Straight-Blade Width\*\*

81"

V-Position Blade Width\*\*

74"

Scoop-Position Blade Width\*\*

32" at center; 25" at ends

Blade Height

490 lbs† | 535 lbs†

Plow Weight\*\*\*

SmartHitch® 2

Attachment System

Light-Duty, 4WD and 1/2-Ton Trucks

Vehicle Application

### 8' HTX V-PLOW\*\*

Stainless

96"

Straight-Blade Width\*\*

85"

V-Position Blade Width\*\*

82"

Scoop-Position Blade Width\*\*

32.5" at center; 25" at ends

Blade Height

550 lbs†

Plow Weight\*\*\*

SmartHitch® 2

Attachment System

Light-Duty, 4WD and 1/2-Ton Trucks

Vehicle Application

\*Excludes 8' model. \*\*Maximum product width. \*\*\*Plow weight does not include vehicle mount weight.

†Vehicle mount weight range: 45-75 lbs. \*\*Available in limited quantities for the 2024-25 season.



SEE IT IN ACTION



# DRAG PRO<sup>®</sup> 180Z

180 Degrees of Rear-Mounted Versatility.

## Standard Features

- Quick Hitch System
- 1¼" x 6" UHMW Cutting Edge and Curb Guards
- Dual, Rear-Facing LED Lights
- Hydraulics and Linkage Inside the Blade
- Quick and Easy Control Panel Access
- Reduced Installation Time and Labor
- 2-Point Attachment System

## Optional Accessories

- Worklight Kit
- Taillight Kit

## Product Specs

### 8'-16" HYDRAULIC FOLDING WING

Steel

100"

Folded Blade Width

192"

Fully Extended Blade Width

24"

Moldboard Height

1,450 lbs with hitch system  
Plow Weight\*

Fifth-Wheel Rails\*\* and Receiver Hitch  
(2-Point Attachment)  
Attachment System

4WD, ¾- and 1-Ton Trucks  
Vehicle Application



SEE IT IN ACTION



# DRAG PRO®

Bring Power To the Back of Your Truck.

## Standard Features

- Hydraulic Folding Wing Models
- Independent Wing Control
- Low-Profile Coupler Design
- Easy Attach/Detach
- High-Performance Hydraulics Package
- Hydraulic Flow Control Valve
- ½" x 6" 1080 Steel Main Cutting Edge
- Molded-In Urethane Snow Catchers
- Fixed-Wing Model
- 1½" 92-Durometer Urethane Wing Cutting Edges

## Optional Accessories

- Worklight Kit
- Taillight Kit
- Rubber Cutting Edge Kit

## Product Specs

### 8' FIXED WING

Stainless

96"  
Folded Blade Width

n/a  
Fully Extended Blade Width

24"  
Moldboard Height

780 lbs  
Plow Weight\*

4WD, ¾- and 1-Ton Trucks  
Vehicle Application

### 8'-12' HYDRAULIC FOLDING WING

Stainless

96"  
Folded Blade Width

144"  
Fully Extended Blade Width

24"  
Moldboard Height

790 lbs  
Plow Weight\*

4WD, ¾- and 1-Ton Trucks  
Vehicle Application

### 8'-16' HYDRAULIC FOLDING WING

Stainless

96"  
Folded Blade Width

192"  
Fully Extended Blade Width

24"  
Moldboard Height

890 lbs  
Plow Weight\*

4WD, ¾- and 1-Ton Trucks  
Vehicle Application

# USER-FO



## SmartTouch® 2

provides ergonomic controls with large, backlit buttons for easy use.



## SmartHitch® 2

is designed to be simple and easy to use. Flip, plug, click. The three-step attachment process makes it easy to switch between plows.



## D-Force®

enhances backdrag performance with consistent hydraulic downforce.

# FOCUSED

PROVEN PERFORMANCE



# TRU

## ICE CONTROL EQUIPMENT

Winter has always been tough; that's why we're tougher. At BOSS, we design, test and innovate the industry's best spreaders and sprayers so that you can attack ice at the source. Regardless of the size of the storm, you can be certain that we'll do Whatever It Takes.



CK

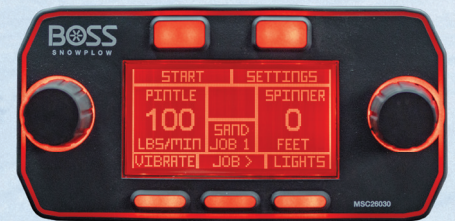


# VBX+

Innovation Meets Performance.

## Standard Features

- Reinforced Poly Hopper
- Smart Compatible
- Standard Rate Control
- Material Tracking
- Simplified Calibrations With Easy Adjustment
- Job Tracking
- Controller-Operated LED Lighting & Strobes in Selectable Patterns
- 50% Increased Power Available on Feeder System<sup>†</sup>
- 80% More Power on the Spinner<sup>†</sup>
- CAN Communication
- Adjustable Spinner Height
- Easy Access Rear Hatch
- Remote Grease Zerks
- BOSS Diagnostic Compatible
- All New Sealed Power/Control Connector
- Spring-Loaded Chain Tension\*\*
- Tarp With Integrated Tie Downs
- Auger or Pintle Chain Material Feed System



## Optional Accessories

- Backup Camera
- Pre-Wet
- Inverted V\*
- Vibrator Kit\*
- License Plate Light
- Clean Out Tray\*\*

## Pre-Wet

Optional pre-wet allows contractors to pre-wet solid deicing material, improving material performance. (Limited availability; see dealer for details.)





SEE IT IN ACTION



## Product Specs

### 1.5 YARD

Auger | Pintle

1.5 cu.yd.  
Hopper Capacity

38"  
Hopper Height

78"  
Hopper Length

48.25"  
Hopper Width

66"  
Minimum Bed Length

8' - 40'  
dry, free-flowing material  
Spreading Width

640 lbs | 680 lbs  
Complete Unit Weight (Empty)

### 2 YARD

Auger | Pintle

2 cu.yd.  
Hopper Capacity

38"  
Hopper Height

96"  
Hopper Length

48.25"  
Hopper Width

78"  
Minimum Bed Length

8' - 40'  
dry, free-flowing material  
Spreading Width

690 lbs | 730 lbs  
Complete Unit Weight (Empty)

### 3 YARD

Auger | Pintle

3 cu.yd.  
Hopper Capacity

49"  
Hopper Height

108"  
Hopper Length

48"  
Hopper Width

96"  
Minimum Bed Length

8' - 40'  
dry, free-flowing material  
Spreading Width

810 lbs | 840 lbs  
Complete Unit Weight (Empty)



SEE IT IN ACTION



# VBX

## Speed, Power & Productivity.

### Standard Features

- Poly Hopper
- Tarp With Integrated Tie-Downs
- Inverted V-Baffle<sup>†</sup>
- Auger or Pintle Chain Material Feed System
- Dual Variable Speed Controller
- Full-Length Slide-Out Tray<sup>\*\*</sup>
- LCD Screen In-Cab Controller
- 14.5" Diameter Urethane Spinner
- Enclosed Spinner Motor
- Dual Vibrators<sup>†</sup>
- Chain Cleaning Brush<sup>\*\*</sup>

### Optional Accessories

- Backup Camera
- Pre-Wet
- Inverted V<sup>\*</sup>
- Vibrator Kit<sup>\*</sup>
- License Plate Light
- LED Light Upgrade Kit
- Pintle Feed Gate<sup>\*\*</sup>

<sup>\*</sup>Standard on auger; optional on pintle. <sup>\*\*</sup>Only available on pintle. <sup>†</sup>Only available on auger.

### Pre-Wet

Optional pre-wet allows contractors to pre-wet solid deicing material, improving material performance. (Limited availability; see dealer for details.)

### Product Specs

#### VBX 6500

Auger | Pintle Chain

1.5 cu.yd.  
Hopper Capacity

38" | 78" | 48.25"  
Hopper Height | Length | Width

66"  
Minimum Bed Length

2'-40'

dry, free-flowing material  
Spreading Width

550 lbs | 600 lbs  
Complete Unit Weight (Empty)

#### VBX 8000

Auger | Pintle Chain

2 cu.yd.  
Hopper Capacity

38" | 96" | 48.25"  
Hopper Height | Length | Width

78"  
Minimum Bed Length

2'-40'

dry, free-flowing material  
Spreading Width

600 lbs | 650 lbs  
Complete Unit Weight (Empty)

#### VBX 9000

Auger | Pintle Chain

3 cu.yd.  
Hopper Capacity

49" | 108" | 48"  
Hopper Height | Length | Width

96"  
Minimum Bed Length

2'-40'

dry, free-flowing material  
Spreading Width

710 lbs | 760 lbs  
Complete Unit Weight (Empty)



# VBX+ vs VBX

**BUILT FOR TODAY AND READY FOR TOMORROW.**

The VBX and VBX+ are two durable, efficient spreaders that enable contractors to do more. Discover the differences between these two solutions and find the option that works best for you.

Features	VBX+	VBX
Poly Hopper	✖	✖
Standard Auger & Optional Pintle Feed System	✖	✖
Material Feed System	✖	✖
Connected Capable	✖	✖
Standard Rate Control	✖	✖
Dual Variable Speed Controller	✖	✖
Job Tracking	✖	✖
Material Tracking	✖	✖
Enclosed Spinner Motor	✖	✖
Remote Grease Zerks	✖	✖
Controller Operated LED Lights	✖	✖
Safety Strobe Lights	✖	✖
Inverted V-Baffle	✖	✖
Chain Cleaning Brush	✖	✖



# TGS

Heavy-Duty Tailgate Power and Performance.

## Standard Features

---

- Enclosed 12-Volt Electric High-Torque Spinner Motor
- Variable Speed Control
- Adjustable Feed Gate
- Poly Adjustable Material Deflector
- 12" Diameter Urethane Spinner\*\*
- Low-Profile Poly Hopper Design
- Choose Your Attachment System\*
- Solid Poly Hopper Cover
- Stabilizer Arms and Tie-Down Straps
- Top Screen With Bag Splitter
- Swing-Away Spinner Assembly\*\*\*
- Feed Paddle\*\*\*

## Optional Accessories

---

- Category 1 or 2, 3-Point Hitch\*
- TGS Vibrator Kit\*
- RT3 Attachment System\*
- Material Saver System\*\* (Standard on TGS 300.)
- Hitch Reducer 2½" to 2"



SEE IT IN ACTION



## Product Specs

### TGS 300'

Auger

3 cu.ft. | 200 lbs  
Hopper Capacity Limit\*\*\*

22"H x 29"W x 15"D  
Hopper Dimensions

4'-30'  
Spreading Width

70 lbs plus mount  
Spreader Weight

### TGS 600'

Auger

6 cu.ft. | 400 lbs  
Hopper Capacity Limit\*\*\*

26"H x 38"W x 21"D  
Hopper Dimensions

4'-30'  
Spreading Width

101 lbs plus mount  
Spreader Weight

### TGS 800''

Paddle Wheel

8 cu.ft. | 780 lbs  
Hopper Capacity Limit\*\*\*

48"H x 36"W x 21"D  
Hopper Dimensions

4'-30'  
Spreading Width

220 lbs plus mount  
Spreader Weight

### TGS 1100'

Auger

11 cu.ft. | 800 lbs  
Hopper Capacity Limit\*\*\*

34"H x 44"W x 24"D  
Hopper Dimensions

4'-30'  
Spreading Width

152 lbs plus mount  
Spreader Weight

\*Excludes TGS 300. \*\*Excludes TGS 800. \*\*\*Available only on TGS 800. †Designed to spread dry, free-flowing material (i.e., salt, deicers, etc.). ††Designed to spread sand, salt or a combination of both. See Spreader Material Guide on pages 60 and 61 for more details on material spreading options. †††Capacity weight maximum.

# MATERIAL CONTROL

Greater Control Over Your Business.

## Material Tracking

The new BOSS VBX+ spreader controller has the capability to track material usage from job to job, improving efficiency and effectiveness for winter maintenance services.

## Cost Effectiveness

Simplified material calibration adjustment helps contractors avoid waste and ensure they use resources effectively.

## Performance and Efficiency

Set your application rate with standard rate control to improve service quality and response times.

## Environmental Impact

Managing material application minimizes negative environmental effects on water bodies, landscaping/turf and vegetation.

## Data

Contractors can generate meaningful data on the application of deicing materials, which can drive smarter material usage and cost savings.

## Safety

Properly managing deicing materials can prevent accidents by reducing slippery conditions.

## Compliance

Ensure compliance with the regulations and standards set by local authorities.

## Customer Satisfaction

Job tracking makes it easier to retain clients and generate positive referrals with high-quality material application.

# AL OL



SEE IT IN ACTION



# TAKE THE LE WITH LIQUID

Work Smarter, Not Harder by implementing a liquid strategy to your snow and ice removal arsenal. Liquid deicing can be a better option for all your snow and ice removal needs. When using liquids, there's no need to wait for an endothermic reaction to occur. Utilizing liquids can be a more effective solution in reducing property damage for your clients as well as costs for you and your business.

## Liquid: Better For Your Business



### Works Faster

In most cases, liquids can get parking lots back to bare pavement 3-4x faster than traditional snow and ice solutions.



### Reduces Costs

On average, making the switch to liquid deicing results in 30%-70% reduction in overall salt usage.



### More Effective

Pre-treating with brine can take place up to 48 hours before a storm occurs.



### Reduces Labor

Because of the ease with which it is applied, and the more effective application rate, liquids save on labor costs.



### Better for the Environment

Liquid deicing utilizes fewer chlorides and results in less chloride contamination of storm water.



### Better for Property

Liquid deicing can reduce property damage costs sometimes associated with the use of rock salt.



# HEAD OS



IMPROVE YOUR BUSINESS  
BY ADDING LIQUID

**ELEVATE YOUR**  
**LIQUID**





# GENES

Get Started in Liquid Deicing.

## Genesis Sprayer Features

- 50' Spring Rewind Hose Reel
- 84" Single-Lane Pile Driver Boom
- 48" Pile Driver Boom (110E Only)
- 12 GPM Flow Rate
- Electric Powered System

## Genesis Sidewalk Slayer Features

- 50' Spring Rewind Hose Reel
- 25' One-Inch Fill Hose

## Product Specs

### Sidewalk Slayer

72"<sup>L</sup> x 46"<sup>W</sup> x 41"<sup>H</sup>  
Dimensions

200  
Gallon Capacity

2.5 acres<sup>\*\*\*</sup>  
Coverage Area\*

2,502 lbs  
Approx. Loaded Weight\*\*

\*Based on an 80 gallons per acre application rate. \*\*Assuming 10 lbs per gallon of liquid. \*\*\*Equivalent to 27,225 linear feet of sidewalk (4 feet wide).  
34 For advanced safety, BOSS recommends wearing Personal Protective Equipment (PPE) while operating our products.



LEARN MORE ABOUT  
THE GENESIS SERIES

# GENESIS SERIES

## Product Specs

### 110E

50"<sup>L</sup> x 46"<sup>W</sup> x 41"<sup>H</sup>  
Dimensions

110  
Gallon Capacity

1.4 acres  
Coverage Area\*

1,390 lbs  
Approx. Loaded Weight\*\*

### 305E

74"<sup>L</sup> x 61"<sup>W</sup> x 43"<sup>H</sup>  
Dimensions

305  
Gallon Capacity

3.8 acres  
Coverage Area\*

3,683 lbs  
Approx. Loaded Weight\*\*

### Power Bundle E

25"<sup>L</sup> x 46"<sup>W</sup> x 46"<sup>H</sup>  
Dimensions

Variable  
Gallon Capacity

Variable  
Coverage Area\*

Variable  
Approx. Loaded Weight\*\*

### 500E

102"<sup>L</sup> x 60"<sup>W</sup> x 50"<sup>H</sup>  
Dimensions

500  
Gallon Capacity

6.3 acres  
Coverage Area\*

5,853 lbs  
Approx. Loaded Weight\*\*

# LEGAC

The Leader in Liquid.

## Legacy Sprayer Features

- GPS Rate-Control Monitors
- Three-Lane Pile Driver Boom with Pencil Tips, Fan & Boomless Side Nozzles
- Smart Connection
- High-Quality LED Lights and Strobes
- Stainless Steel Skids and Saddle
- Boomless Nozzles
- 80 GPM Capacity
- Self-Fill and Pump Out
- 100' Electronic Hose Reel
- Gas-Powered Engine

## Legacy Sidewalk Slayer Features

- Gas-Powered Engine
- 100' Electronic Hose Reel
- 25' One-Inch Fill Hose

## Optional Accessory

- 100" Boom Kit

## Product Specs

### Sidewalk Slayer

72"<sup>L</sup> x 47"<sup>W</sup> x 32"<sup>H</sup>  
Dimensions

200  
Gallon Capacity

2.5 acres<sup>\*\*\*</sup>  
Coverage Area\*

2,638 lbs  
Approx. Loaded Weight\*\*

\*Based on an 80 gallons per acre application rate. \*\*Assuming 10 lbs per gallon of liquid.



WATCH A  
PRODUCT OVERVIEW



# Y SERIES

## Product Specs

### Automated Power Bundle

25<sup>''</sup>L x 48<sup>''</sup>W x 46<sup>''</sup>H  
Dimensions

Variable  
Gallon Capacity

Variable  
Coverage Area\*

Variable  
Approx. Loaded Weight\*\*

### 750

108<sup>''</sup>L x 70<sup>''</sup>W x 57<sup>''</sup>H  
Dimensions

750  
Gallon Capacity

9.4 acres  
Coverage Area\*

8,627 lbs  
Approx. Loaded Weight\*\*

### 305

74<sup>''</sup>L x 61<sup>''</sup>W x 43<sup>''</sup>H  
Dimensions

305  
Gallon Capacity

3.8 acres  
Coverage Area\*

3,893 lbs  
Approx. Loaded Weight\*\*

### 1000

110<sup>''</sup>L x 80<sup>''</sup>W x 67<sup>''</sup>H  
Dimensions

1,000  
Gallon Capacity

12.5 acres  
Coverage Area\*

11,200 lbs  
Approx. Loaded Weight\*\*

### 500

102<sup>''</sup>L x 60<sup>''</sup>W x 50<sup>''</sup>H  
Dimensions

500  
Gallon Capacity

6.3 acres  
Coverage Area\*

5,966 lbs  
Approx. Loaded Weight\*\*

### 1600

156<sup>''</sup>L x 74<sup>''</sup>W x 63<sup>''</sup>H  
Dimensions

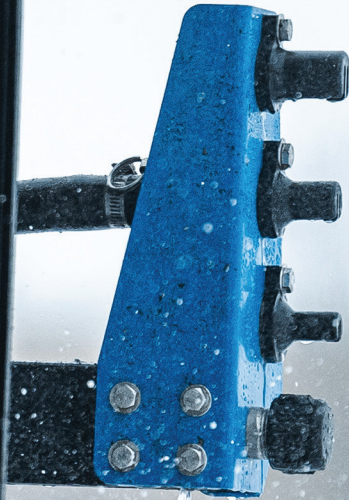
1,600  
Gallon Capacity

20 acres  
Coverage Area\*

18,122 lbs  
Approx. Loaded Weight\*\*



WATCH A LEGACY  
BRINE MAKER OVERVIEW



# BRINE MAKERS

Create your own brine and bring an added layer of efficiency and effectiveness to your business with the Genesis Brine Buddy or Legacy Brine Maker.

## Genesis Brine Buddy

- Built-In Electronic Salinity Indicator
- Full Manifold System
- Pump Out Flexibility
- 110V Electric Motor



## Product Specs

### Brine Buddy

76"<sup>L</sup> x 42"<sup>W</sup> x 41"<sup>H</sup>  
Dimensions

280-300  
Salt Hopper Capacity

300 gallons  
Batch Size

900-1,000  
Est. Gallons Per Hour

110  
Voltage

## Legacy Brine Maker

- Built-In Electronic Salinity Indicator
- Manifold System With Three Connections
- Pump Out Flexibility
- 220V Single-Phase, 5-HP Electric Motor



## Product Specs

### Brine Maker

86"<sup>L</sup> x 98"<sup>W</sup> x 76"<sup>H</sup>  
Dimensions

4,320 lbs  
Salt Hopper Capacity

650-700 gallons  
Batch Size

2,500-3,500  
Est. Gallons Per Hour

220  
Voltage

# WORK SMARTER

Our Legacy Series liquid controllers are Bluetooth-enabled so that contractors can easily control the application amount and hose reeling while keeping a sharp eye on the essential performance data of their system. Plus, contractors can share CSV files with specific job data directly to their clients.





# ELEVATE YOUR LIQUID

READY TO BEGIN YOUR EDUCATION IN LIQUID DEICING?



Scan the QR code below to explore all our liquid learning resources and ensure you're not left behind when liquid takes over the industry. From downloadable content to an educational video series and even a cost-saving calculator, we provide all the tools you need to Elevate Your Liquid IQ.

Learn More



# HEA EQUIPMENT



BOSS Heavy Equipment is made to do Whatever It Takes. With better reliability, strength and performance, you can take on winter's toughest battles with the quality and durability you've come to expect from us.

# AWAY





WATCH A  
PRODUCT OVERVIEW



# LOADER BOX PLOWS

Heavy-Duty Efficiency.

## Standard Features

- High-Efficiency Moldboard
- Exclusive Self-Adjusting Box Wings
- Floating Bucket Attachment System
- Segmented Trip-Edge Design
- Adjustable Heavy-Duty Trip Springs
- Robust Support Struts
- 3/4" AR450 Wing Shoes
- 3/4" AR400 Segmented Cutting Edges

## Product Specs

**14'**

Steel

176"

Width

49"

Moldboard Height

3,190 lbs

Weight

Universal (ADJ) bucket receiver,  
3" opening binder chain  
(customer-supplied)  
Attachment Strategy

Backhoe and Loaders  
Vehicle Application

**16'**

Steel

200"

Width

49"

Moldboard Height

3,320 lbs

Weight

Universal (ADJ) bucket receiver,  
3" opening binder chain  
(customer-supplied)  
Attachment Strategy

Backhoe and Loaders  
Vehicle Application



LEARN MORE



# BACKHOE BOX PLOWS

Push Through It.

## Standard Features

- High-Efficiency Moldboard
- Exclusive Self-Adjusting Box Wings
- Floating Bucket Attachment System
- Segmented Trip-Edge Design
- Adjustable Heavy-Duty Trip Springs
- Robust Support Struts
- ¾" AR450 Wing Shoes
- ½" AR450 Segmented Cutting Edges

## Optional Accessory

- Universal Box Plow Coupler Kit

## Product Specs

**12'**

Steel

**150"**

Width

**38"**

Moldboard Height

**2,000 lbs**

Weight

Universal bucket receiver,  
3" opening binder chain  
(customer-supplied)  
Attachment Strategy

Backhoe and Loaders  
Vehicle Application



LEARN MORE ABOUT RUBBER VS STEEL EDGES



# SK BOX PLOWS

Steel Cutting Edge Power With Every Push.

## Standard Features

- High-Efficiency Moldboard
- Bolt-On Wing Design
- Floating Attachment System
- 1/2" x 6" Durable Steel Cutting Edge
- Adjustable Heavy-Duty Trip Springs
- 1/2" AR450 Heavy-Duty Wing Shoes

## Optional Accessory

- Backdrag Edge Kit

## Product Specs

**8'**

Steel

100"  
Width

30"  
Moldboard Height

900 lbs  
Weight

Universal coupler,  
SAE J2513 floating mount  
Attachment Style

Skid Steer  
Vehicle Application

**10'**

Steel

124"  
Width

30"  
Moldboard Height

1,000 lbs  
Weight

Universal coupler,  
SAE J2513 floating mount  
Attachment Style

Skid Steer  
Vehicle Application

**12'**

Steel

148"  
Width

30"  
Moldboard Height

1,245 lbs  
Weight

Universal coupler,  
SAE J2513 floating mount  
Attachment Style

Skid Steer  
Vehicle Application



SEE IT IN ACTION



# SK-R BOX PLOWS

Reversible Rubber Cutting Edge Innovation.

## Standard Features

- High-Efficiency Moldboard
- Bolt-On Wing Design
- 16" x 8" Reversible Rubber 65-Durometer Cutting Edge
- Fixed Attachment System
- Articulating, Heavy-Duty Wing Shoes

## Optional Accessory

- Backdrag Edge Kit

## Product Specs

**6'**

Steel

79"

Width

30"

Moldboard Height

860 lbs

Weight

Universal coupler,

SAE J2513

Attachment Style

Skid Steer

Vehicle Application

**8'**

Steel

103"

Width

30"

Moldboard Height

970 lbs

Weight

Universal coupler,

SAE J2513

Attachment Style

Skid Steer

Vehicle Application

**10'**

Steel

127"

Width

30"

Moldboard Height

1,078 lbs

Weight

Universal coupler,

SAE J2513

Attachment Style

Skid Steer

Vehicle Application



# SKID STEER TRIP-EDGE PLOWS

Reliable Trip-Edge Performance.

## Standard Features

- Trip-Edge Design
- Adjustable Trip Springs
- Cast-Iron Plow Shoes
- Reinforced Moldboard
- Universal Skid Steer Attachment System
- Angle Left and Right

## Optional Accessories

- Snow Deflector
- Wing Extensions
- Turf Defender

## Product Specs

**7'6"**

Steel

90"

Straight-Blade Width

31"

Blade Height

812 lbs

Plow Weight

Universal coupler,  
SAE J2513 floating mount  
Attachment Style

Skid Steer  
Vehicle Application

**8'**

Steel | Stainless

96"

Straight-Blade Width

31"

Blade Height

829 lbs | 881 lbs

Plow Weight

Universal coupler,  
SAE J2513 floating mount  
Attachment Style

Skid Steer  
Vehicle Application

**9'**

Steel | Stainless

108"

Straight-Blade Width

31"

Blade Height

882 lbs | 939 lbs

Plow Weight

Universal coupler,  
SAE J2513 floating mount  
Attachment Style

Skid Steer  
Vehicle Application





LEARN MORE



# TRACTOR PLOW & SPREADERS

Tractor Tough. Work Ready.

## Tractor Plows

- HTX Straight-Blades
- HTX V-Plow
- Super-Duty Straight-Blades
- DXT Plows
- EXT Plows
- XT Plows

## Tractor Spreaders

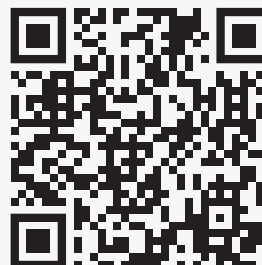
- TGS Spreader (excludes TGS 300 & TGS 85)
- Easily Mount with Category 1 and 2, 3-Point Hitch Attachment

## Applications

- **John Deere® 3 and 4 Series Tractor Models** are compatible with both RT3 straight-blades and V-Plows as well as HTX plow models.
- **John Deere® 5 Series and Kubota® Grand L40 Tractor Models** are compatible with both RT3 straight-blades and V-Plows. (Excludes HTX plow models and heavy-duty plows.)

## Product Selector

BOSS provides a wide range of snow and ice solutions applicable for tractors. Scan the QR Code to utilize the BOSS product selector tool to find the best solution for your needs.





# EXACT PATH® FOR TRACTORS

High Precision Equipment.

## Tractor Spreaders

- EXACT PATH® 2.5 Drop Spreader\*
- EXACT PATH® 6.0 Drop Spreader\*

## Standard Features

- 8-Position Adjustable Feed Gate
- Stainless Steel Hopper and Frame Construction
- Solid Poly Hopper Cover With Flexible Draw Latch
- Stainless Steel Top Screen With Bag Splitter
- Enclosed 12-Volt Electric High-Torque Motor
- Variable Speed Control

## Product Specs

Exact Path® 2.5	Exact Path® 6.0
2.5 cu.ft. Capacity Volume	6.0 cu.ft. Capacity Volume
22" Overall Height	30" Overall Height
12" Hopper Length	16" Hopper Length
47" Overall Width	47" Overall Width
40" Spreading Width	40" Spreading Width
150 lbs Empty Weight	175 lbs Empty Weight



WATCH A  
PRODUCT OVERVIEW



# QUICKCUBE®

Ready When You Need It.

## Product Benefits

- Improve Response Time
- Reduce Fuel Costs and Truck Wear and Tear
- Weather-Resistant and Stackable Design
- Expand Your Labor Pool
- Load Simply and Easily
- Transport Loaded Cubes
- 1,000 lb Material Capacity

## Product Specs

### QuickCube®

0.5 cu.yd.  
Cube Capacity

38"<sup>H</sup> x 38"<sup>L</sup> x 46"<sup>W</sup>  
Cube Dimensions

2'-40'  
Spreading Width

100 lbs  
Cube Weight (Empty)

The selection of proper deicing materials can be complex and varies by personal preference, experience and environmental concerns. All factors should be considered before making your selection.

# COMPACT EQUIPMENT



When everything is covered in snow and ice, we make sure you have the solutions you need to RESTORE ORDER. We're here to deliver the compact strength and efficiency you demand. At BOSS, we do Whatever It Takes to equip you with the quality and durability you need to get back to bare pavement.



# SNOWPLOWS

No Winches. No Cables. No Pulleys.

## Standard Features

- High-Performance Hydraulics Package
- Enclosed Hydraulics
- Full Moldboard Trip Design
- Direct Hydraulic Cylinder Lifting System
- Reversible Cutting Edge (4' & 5' Mid-Size Straight-Blade Only)
- Heavy-Duty Cutting Edge
- Patented Snow Catcher (V-Plows only)
- SmartTouch® 2 Controller
- Handlebar Switch Box Controller (ATV only)

## Optional Accessories

- Headlight kits
- Urethane Edge Kit
- Front Hitch Kit (Full-Size UTV Only)
- SmartLock® Cylinders (Full-Size UTV V-Plow Only)
- SmartHitch® 2 Mounting Option (Full-Size UTV Only)
- Caster Wheel Kit (6'6" V-Plow Only)
- Box Wing Kit (Mid-Size Straight-Blade Only)
- Wing Extensions (Mid-Size Straight-Blade Only)
- Skid Plate (ATV/Mid-Size UTV)
- Snow Deflector
- Blade Guides
- Plow Shoe Kits
- Turf Defender
- Curb Guards
- 3/8" AR450 Extended Wear Cutting Edge (4' Straight-Blade Only)

## Compatible Toro® Vehicles

### 4' Straight-Blades

- All Toro® Dingo® models except the TXL 2000 & e-Dingo®
- GrandStand® Multi-Force

### 5' Straight-Blade Plows

- Toro® Workman® HDX
- Toro® Workman® MDX
- All Toro® Dingo® models except the TXL 2000 & e-Dingo®
- GrandStand® Multi-Force

### 6' Straight-Blade / 6'6" XT Plow

- Toro® UTX

For a complete listing of compatible ATVs,UTVs and compact vehicles, please see [bossplow.com](http://bossplow.com).



## Product Specs

### 5'6" XT V-Plow

Steel

66" | 69"

Straight-Blade Width | Curb Guard Width\*

59" | 61"

V-Position Blade Width | Curb Guard Width\*

56" | 62"

Scoop-Position Blade Width | Curb Guard Width\*

18" inside; 23" outside  
Blade Height

245 lbs  
Plow Weight

Quick Attach  
Attachment System

ATVs, Toro® Vehicles (Straight-Blade only) and Mid-Size UTVs  
Vehicle Application

### 6'6" XT V-Plow

Steel

78" | 80"

Straight-Blade Width | Curb Guard Width\*

69" | 71"

V-Position Blade Width | Curb Guard Width\*

67" | 74"

Scoop-Position Blade Width | Curb Guard Width\*

25" inside; 31" outside  
Blade Height

400 lbs  
Plow Weight

RT3 (SmartHitch® 2  
optional)  
Attachment System

Full-Size UTVs  
Vehicle Application



SEE IT IN ACTION



## Product Specs

### 4' STRAIGHT

Poly

48"  
Straight-Blade Width

22"  
Blade Height

170 lbs  
Plow Weight

Quick Attach  
Attachment System

ATVs, Toro® Vehicles (Straight-Blade only) and Mid-Size UTVs  
Vehicle Application

### 5' STRAIGHT

Poly

60"  
Straight-Blade Width

22"  
Blade Height

190 lbs  
Plow Weight

Quick Attach  
Attachment System

ATVs, Toro® Vehicles (Straight-Blade only) and Mid-Size UTVs  
Vehicle Application

### 6' STRAIGHT

Poly

72"  
Straight-Blade Width | Curb Guard Width\*

25"  
Blade Height

314 lbs  
Plow Weight

RT3 (SmartHitch® 2 optional)  
Attachment System

Full-Size UTVs  
Vehicle Application



WATCH A  
PRODUCT OVERVIEW



# EXACT PATH® DROP SPREADERS

Strength, Speed and Precision.

## Standard Features

- Enclosed 12-Volt Electric High-Torque Motor
- Variable Speed Control
- 8-Position Adjustable Feed Gate
- Stainless Steel Hopper and Frame Construction
- Solid Poly Hopper Cover With Flexible Draw Latch
- Stainless Steel Top Screen With Bag Splitter

## Attachment Methods

- Category 1, 3-Point Hitch
- Toro® Groundsmaster® Mount Kit
- UTV Bed Mount Kit
- Height-Adjustable 2" Slide-In Receiver

## Product Specs

### Exact Path® 2.5

2.5 cu.ft.  
Capacity Volume

22"  
Overall Height

12"  
Hopper Length

47"  
Overall Width

500 lbs  
Minimum Bed Capacity

40"  
Spreading Width

150 lbs  
Empty Weight

### Exact Path® 6.0

6.0 cu.ft.  
Capacity Volume

30"  
Overall Height

16"  
Hopper Length

47"  
Overall Width

1,000 lbs  
Minimum Bed Capacity

40"  
Spreading Width

175 lbs  
Empty Weight

The selection of proper deicing materials can be complex and varies by personal preference, experience and environmental concerns. All factors should be considered before making your selection.





WATCH A  
PRODUCT OVERVIEW



# VBX 3000

Power and Efficiency in a Compact Size.

## Standard Features

- Poly Hopper
- Tarp with Integrated Tie-Downs
- Inverted V-Baffle
- Shaftless 4" Auger with 4" of Pitch
- Vibrator
- 12" Diameter Urethane Spinner
- Spinner Motor
- Dual Motor Control

## Optional Accessory

- Backup Camera
- LED Worklight Kit

## Product Specs

### VBX 3000

12 cu.ft  
Hopper Capacity

28"<sup>H</sup> x 42"<sup>L</sup> x 50"<sup>W\*</sup>  
Hopper Size

34"  
Minimum Bed Length

2'-40'  
Spreading Width

230 lbs  
Complete Unit Weight (Empty)

1,000 lbs  
Bed Capacity

# SCOOP & PUSHER SHOVELS

Tough, Durable, High-Performance Shovels.

BOSS has joined forces with the leaders in high-performance, contractor-grade snow shovels! These shovels are built for the abuse of the season with premium blade material for unmatched scraping ability. Pusher shovels available in 28", 36" and 48" widths.



# GENESIS PUSH PAL

Versatile Liquid Solution.

## Standard Features

- Easy-Swap Jug System
- Fold-Down Handle
- Spray Wand
- Heavy-Duty Stainless Steel Construction



## Product Specs Push Pal

17"<sup>L</sup> x 21"<sup>W</sup> x 49"<sup>H</sup>  
Dimensions

5 lbs  
Gallon Capacity

0.0625  
Coverage Area (Acres)\*

120 lbs  
Approx. Loaded Weight\*\*



WATCH A  
WBX OVERVIEW



# WBX

Walk-Behind Precision & Performance.

## Standard Features

- 3-Position Adjustable Handle Height
- Solid Stainless Steel Linkage
- Salt Deflector Package
- Material Cover
- Quick and Easy Assembly

## WBX 80 & WBX 100

- 80 lbs or 100 lbs
- Walking-Floor Agitation (WBX80 Only)
- Smooth-Walled Poly Hopper
- Wide-Mouth Gate
- Steep-Wall, Agitator-Free Poly Hopper (WBX100 Only)

## Product Specs

WBX 80	WBX 100
25 lbs Approx. Weight (Empty)	25 lbs Approx. Weight (Empty)
80 lbs Material Capacity	100 lbs Material Capacity
Up to 15' Spreading Width	Up to 15' Spreading Width
41" <sup>L</sup> x 22" <sup>W</sup> x 32" <sup>H</sup> Overall Dimensions	41" <sup>L</sup> x 22" <sup>W</sup> x 32" <sup>H</sup> Overall Dimensions

# SPREADER

## MATERIAL APPLICATION GUIDE

### Bag Deicers 1-4



**1 2 3 4**  
WBX Series



**1 2 3 4**  
TGS 300



**2 3 4 5 6 7**  
TGS 600



**5 6 7 8 9**  
TGS 800



**2 3 4 5 6 7**  
TGS 1100



DOWNLOAD HERE

**Bulk Salt 5-7**

Coarse Bulk Salt

6

Very Coarse Bulk Salt

7

**Salt/Sand & Sand 8-9**

Sand/Salt Mix

8

Sand

9



2 3 4 5 6 7

QuickCube®



1 2 3 4 5 6 7 8 9

EXACT PATH®



5 6 7 8\*

VBX  
AUGER

VBX 3000 | VBX 6500  
VBX 8000 | VBX 9000



5 6 7 8\* 9\*

VBX  
PINTLE

VBX 6500 | VBX 8000  
VBX 9000

5 6 7 8\*

VBX+  
AUGER

5 6 7 8\* 9\*

VBX+  
PINTLE

**NOTE:** Assumes dry, free-flowing material. Vibrators should not run continuously. The selection of proper deicing materials can be complex and varies by personal preference, experience and environmental concerns. All factors should be considered before making your selection.

\*Materials that recommend a vibrator.

# TRUCK PARTS & ACCESSORIES





SEE MORE

## TRUCK OPTIONS



### Replacement Bumper Trim Kit

Eliminate the need to cut or modify a portion of the OEM bumper to access the push beam hooks. (Available for select Chevy and GMC vehicles.)

## MAINTENANCE



### Touch-Up Paint

Cover chips and scrapes the professional way with BOSS touch-up paint.

## BLADE PERFORMANCE



### Plow Wings

Increase your blade width by a full 22" and decrease your plowing time with optional plow wings.



### Urethane Cutting Edges

Genuine BOSS urethane cutting edges are great for protecting surfaces and cover a wide range of straight-blade and V-plow models.



### Rubber Snow Deflector

Keep snow from blowing onto your windshield while increasing visibility and safety with a rubber snow deflector, specifically designed for BOSS snowplows.

### Backdrag Edge

Enhance the use of D-Force® and improve scraping performance when backdragging.

### DRAG PRO® Rubber Edge Kit

Improve scraping performance and protect surfaces with the DRAG PRO® Rubber Edge Kit.

### Curb Guards

Protect the edges of your plow with these long-lasting, high-impact curb guards. (Excludes HTX, EXT and DRAG PRO®)

## LIGHTING

### SL3 with Ice Shield Technology™ Upgrade Kits

SL3 headlights with IceShield Technology™ are standard on new plow purchases. Upgrade your existing SmartLight™ 1 or SmartLight™ 2 halogen headlights to the 100% LED SL3 headlights with Ice Shield Technology™ for best-in-class lighting.



## CONTROLLERS

---



### SmartTouch® 2 Control

---

Our high-tech SmartTouch® 2 ergonomic control features large, backlit buttons for ease of use on a straight-blade, V-plow, DRAG PRO® and EXT.

### Control Mounting Options

---

Pedestal mount or dash mount is available for the BOSS SmartTouch® 2 handheld controller.



### Joystick Control

---

Our BOSS joystick controllers offer the versatility of right- or left-hand adjustments and are available for straight-blade, V-blade and EXT plows.

## PLOW ENHANCEMENTS

---



### Cast-Iron Plow Shoes

---

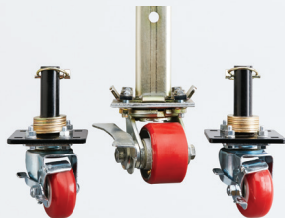
These ultra-rugged, cast-iron shoes deliver extended wear resistance compared to conventional steel shoes.



### D-Force®

---

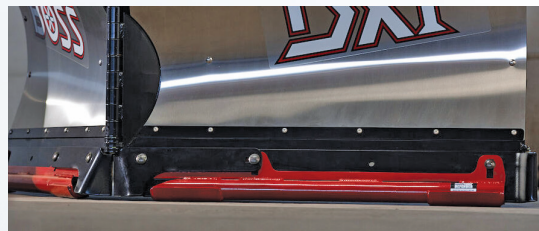
D-Force® improves scraping performance while backdragging by maintaining a consistent hydraulic down force powered by a hydraulic accumulator.



### Caster Wheels

---

Caster wheels are ideal for moving your plow around the garage or service bay. BOSS caster wheel kits utilize existing shoe holders on the blade, making moving your plow a breeze.



### Turf Defender

---

Shield sensitive surfaces, like turf and gravel, from the aggressive bite of the conventional cutting edge. The rounded edge allows the plow to float over grass, gravel and other loose or soft landscaping materials, moving the snow and not what lies underneath it.

### BOSS Carbide Cutting Edge

---

BOSS carbide cutting edges come with 3/8" thick AR400 cover plate fully welded to the leading face of the cutting edge. This impact-resistant steel protects the carbide inserts from the full force of a collision with a manhole cover or other obstacles, helping extend the life of your cutting edge. (Available on 9' and 10' HD+ only.)





SEE MORE

# BOSS

SNOWPLOW

# ICE CONTROL PARTS & ACCESSORIES

**BOSS**



SEE MORE

# HOPPER SPREADERS



## Pre-Wet System

Equipped with a 60-gallon tank, the pre-wet system allows contractors to pre-wet solid deicing materials as they are distributed. (Excludes VBX 3000, TGS & EXACT PATH.®)

## Hopper Vibrator Kit

Improve material flow and handling with the addition of the Hopper Spreader Vibrator Kit, standard on auger.

## License Plate Light

Illuminate your license plate with ease by relocating it to the spreader with our license plate light. Compliant with FMVSS (Federal Motor Vehicle Safety Standards), our light ensures your license plate remains visible without obstruction. Upgrade now for enhanced visibility and compliance.

# TGS

## TGS Vibrator Kit

Improve material flow and handling with the TGS Vibrator Kit. This kit reduces material flow issues and increases your efficiency and profitability. (Not recommended for TGS 300.)

# TOOLS



## Scoop & Pusher Shovels

These tough, durable, high-performance shovels are built for the abuse of the season with premium blade material for unmatched scraping ability. Pusher shovels available in 28", 36" and 48" widths.



## WBX Series: Walk-Behind Spreaders

Simply and effectively spread deicing material with professional-grade BOSS Walk-Behind Spreaders. Available in 80 lbs or 100 lbs.



## Backup Camera

The spreader backup camera has a 150° viewing angle, 20G vibration rating and IP68 waterproof rating. It is equipped with infrared lights that allow for 50 feet of vision at night as well as a 7" LCD color monitor with backlit buttons.

## Inverted V

Control the weight and flow of materials onto the pintle chain with this optional accessory. Inverted V comes standard on auger spreaders.

## VBX & VBX+ Pintle Chain Cleanout Tray

The simple solution for keeping your truck bed free of salt and sand debris. Designed to fit snugly under the chain, it effortlessly catches any loose material before it reaches your truck bed. Plus, with its easy-to-pull-out feature, dumping collected debris is a breeze. Say goodbye to messy truck beds and hello to hassle-free maintenance.

## Material Saver System

Eliminate material flow when the spreader is not in use. (Standard on TGS 300; optional on TGS 600 and TGS 1100. Not available on TGS 800.)



## 5-Gallon Buckets & Lids

Be ready for the worst weather with 5-gallon buckets that allow you to carry additional supplies to any job site. (Buckets and lids sold separately.)

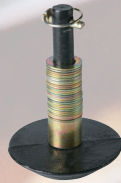


## Beacon Light

Designed for snow and ice control professionals, the new Beacon Warning Light offers a low profile, 6" rotating beacon that is completely dust- and water-tight to withstand the elements. With a suction cup and magnetic attachment, the Beacon Warning Light is suitable for a wide range of trucks and equipment.

# COMPACT EQUIPMENT PARTS & ACCESSORIES

## PLOW ATTACHMENTS & ENHANCEMENTS



### Plow Shoes/Plow Shoe Kit

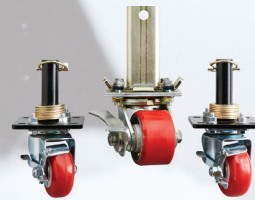
Help extend the life of the plow's cutting edge and deliver extended wear resistance by adding a set of durable, ultra-rugged plow shoes.

### Front Hitch Kit

The front hitch kit secures to the full-size UTV undercarriage. This kit is recommended for UTVs where the undercarriage interferes with the OEM front hitch.

### SmartLock® Cylinder

Keep your V-plow locked securely in the straight position while backdragging with these easy-to-install locking cylinders (full-size UTV V-plow only).



### Plow Caster Wheels

Ideal for moving your plow around in the garage or service bay, these caster wheels utilize existing shoe holders on the blade and make moving the plow a breeze. These heavy-duty wheels feature steel ball bearings for smooth movement and long-lasting life. Available for 6'6" XT Plow.

### SmartHitch® 2

Designed to be simple and easy to attach and detach the plow. Flip, plug, click. The three-step attachment process makes it easy to attach (full-size UTVs only).

### Skid Plate Accessory Kit

Protect your undercarriage when the plow has been removed with the BOSS ATV/mid-size UTV skid plate.

## Shop BOSS Gear

Rep BOSS Snowplow all year-round with the official apparel, headwear and accessories from BOSS. From headwear to hoodies, jackets, vests and accessories, BOSS has gear for every occasion. Scan the QR code to gear up!



# BLADE PERFORMANCE



SEE MORE



## Rubber Snow Deflector

Increase visibility and safety with a rubber snow deflector designed specifically for BOSS compact vehicle snowplows.



## Blade Extensions

Extend the width of your ATV/mid-size UTV straight-blade plow by 12" overall (6" on each side) with the blade extension kit. This kit enhances the plow's snow-clearing abilities by widening its reach.

## Turf Defender

The BOSS Turf Defender aims to shield sensitive surfaces, like turf and gravel, from the aggressive bite of the conventional cutting edge. The rounded edge allows the plow to float over grass, gravel and other loose or soft landscaping materials, moving the snow and not what lies underneath it.



# LIGHT ADD-ON

## Beacon Light

Designed for snow and ice control professionals, the new Beacon Warning Light offers a low profile, 6" rotating beacon that is completely dust- and water-tight to withstand the elements. With a suction cup and magnetic attachment, the Beacon Warning Light is suitable for a wide range of trucks and equipment.



# LIGHTING OPTIONS

## LED Headlight Kit

Designed for tough conditions, optional LED headlight kits offer a hardened clear glass lens housed in reinforced fiberglass plastic for long-lasting durability. This headlight kit includes the plow-side and vehicle-side wiring harnesses, headlight brackets and all the hardware necessary to outfit 6'0" UTV straight-blade and 6'6" UTV XT Plows.



### TWO-YEAR LIMITED WARRANTY

All BOSS snowplows and equipment are guaranteed to be free from defects in material and workmanship for two full years from the date of purchase. Stop by any authorized BOSS Dealer to receive complete details on our two-year parts and labor warranty. Please visit [bossplow.com](http://bossplow.com) for more details.

### LEGAL STATEMENT

Vehicles intended to be equipped with a spreader and/or snowplow must comply with the vehicle manufacturers' specifications for equipment application. BOSS Products, a division of The Toro Company, reserves the right under its product improvement policy to change construction or design details and furnish equipment when so altered without reference to illustrations or specifications used herein. BOSS Products may be protected by one or more patents; please see [bossplow.com](http://bossplow.com) for more details.

To comply with federal regulations and to ensure a safe vehicle, do not exceed the front gross axle weight rating (FGAWR), rear gross axle weight rating (RGAWR), gross vehicle weight rating (GVWR) or maximum vehicle payload ratings at any time. Combinations of equipment such as snowplows and spreaders, density of material being spread and the number of vehicle occupants should be taken into consideration. Ensuring these limitations are not exceeded may require weighing the vehicle and adding ballast as necessary. For receiver hitch-mounted products, do not exceed hitch rating at any time. Completed vehicle must not exceed front GAWR, rear GAWR or GVWR.



Enhance the power, performance and durability of your BOSS product with Genuine BOSS Parts & Accessories. Ask your dealer for information or shop online at [bossplow.com](http://bossplow.com).

# WHATEVER IT TAKES

At BOSS, we know snow and ice contractors are committed to RESTORING ORDER no matter the cost. That's why we push our products to do more, go further and work harder because without snow and ice contractors, chaos reigns supreme.



If you're a snow and ice contractor dedicated to doing Whatever It Takes, make sure to register as a member of the BOSS Owners Group. As a member, you'll receive exclusive perks, including:

- A complimentary welcome gift
- Special promotions
- Personalized profile page
- And much more!

Remember, you can always rely on BOSS to do Whatever It Takes to BACK YOU UP. Scan the QR code or visit [bossplow.com/owners](https://bossplow.com/owners) to learn more.

# ER

**BOSS**  
SNOWPLOW

**JOIN TODAY**

Scan the QR code  
to join the BOSS  
Owners Group now.





**BOSSPLOW.COM**



See how BOSS continues to BACK YOU UP.  
Get more info, watch videos, find a dealer or chat live.



With a user-friendly interface, Horizon360 is a powerful tool that simplifies scheduling, invoicing and client management. Visit [horizon360.toro.com](http://horizon360.toro.com) to learn more.



With quality and reliability at the forefront, BOSS Genuine Parts are designed, built and tested to fit your BOSS product.



SnowCare for Troops is a nationwide outreach program that performs free snow removal for active military families. Sign up today at [ProjectEvergreen.com](http://ProjectEvergreen.com).



Ask your dealer or visit [bossplow.com](http://bossplow.com) to explore the complete lineup of BOSS products, including Truck Equipment, Compact Vehicle Equipment, Heavy Equipment, Ice Control Equipment, Snowrator® and Accessories. Ask your local dealer about financing options!



Join the BOSS Owners Group and receive a free gift, along with a personalized profile page and exclusive access to special offers and information about BOSS products and services! Visit [bossplow.com/owners](http://bossplow.com/owners) to learn more.

PATENTS: [www.ttcopats.com](http://www.ttcopats.com)

©2024 BOSS Products. All Rights Reserved. Printed in U.S.A.  
Form #SLS-TRK02024

Chevy and the Chevy logo are registered trademarks of General Motors Corporation. Ford and FX4 are registered trademarks of Ford Motor Company. Dodge and Ram are registered trademarks of FCA US LLC. Komatsu is a registered trademark of Komatsu Matere Co. John Deere is a registered trademark of Deere & Company. Kubota is a registered trademark of Kubota Corporation. The CAT logo is a registered trademark of Caterpillar Inc. Case is a registered trademark of CNH Industrial America. The Omnia Partners logo is a registered service mark of Omnia Partners, Inc. The Sourcewell logo is a service mark of National Joint Power Alliance. All other trademarks belong to The Toro Company.



**OMNIA**  
PARTNERS



BOSS Products  
2010 The BOSS Way  
Iron Mountain, MI 49801

BOSS Snowplow Products are designed and manufactured in an approved ISO 9001:2015 registered facility.