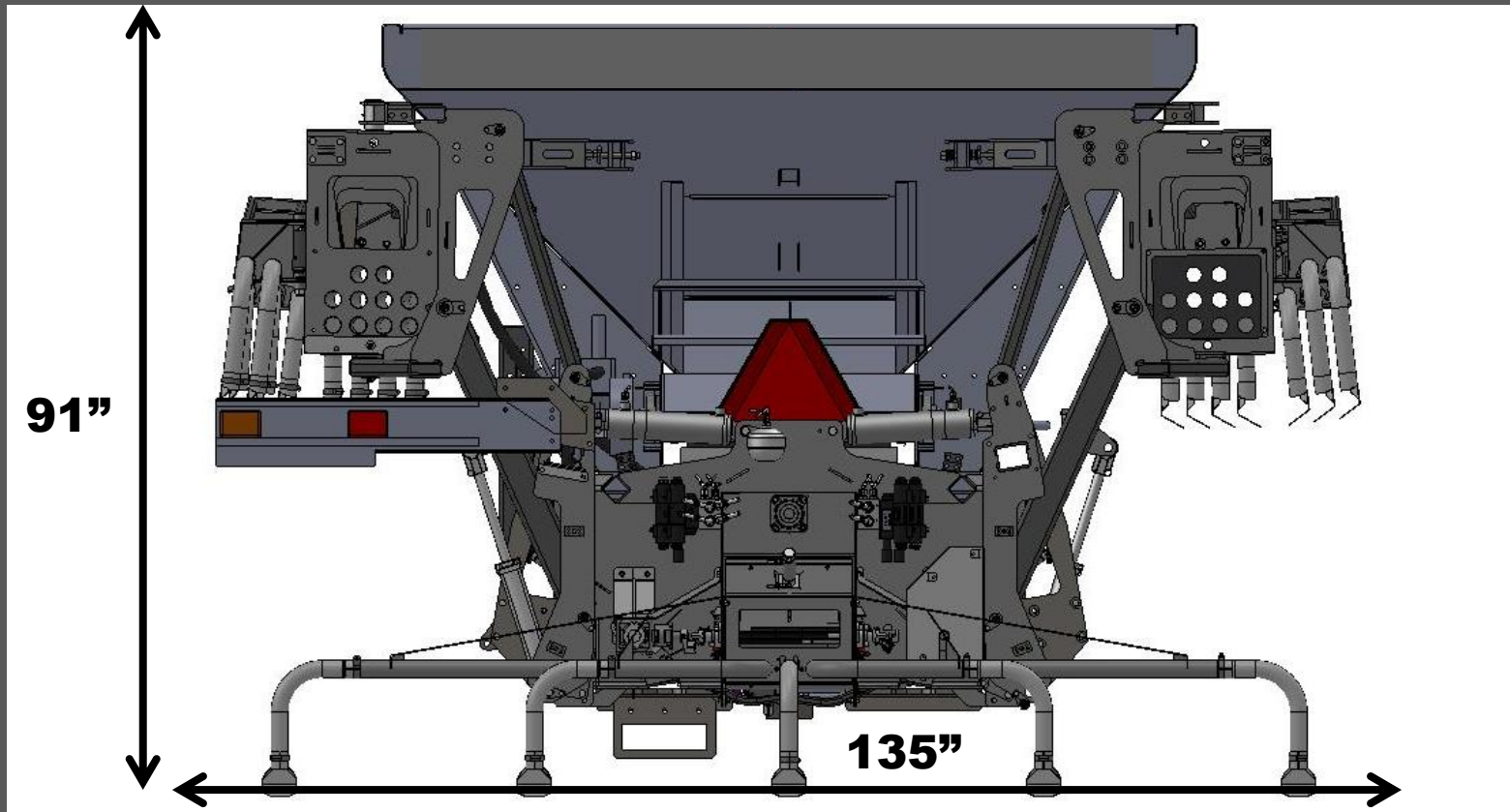


Aulari's precision air-boom

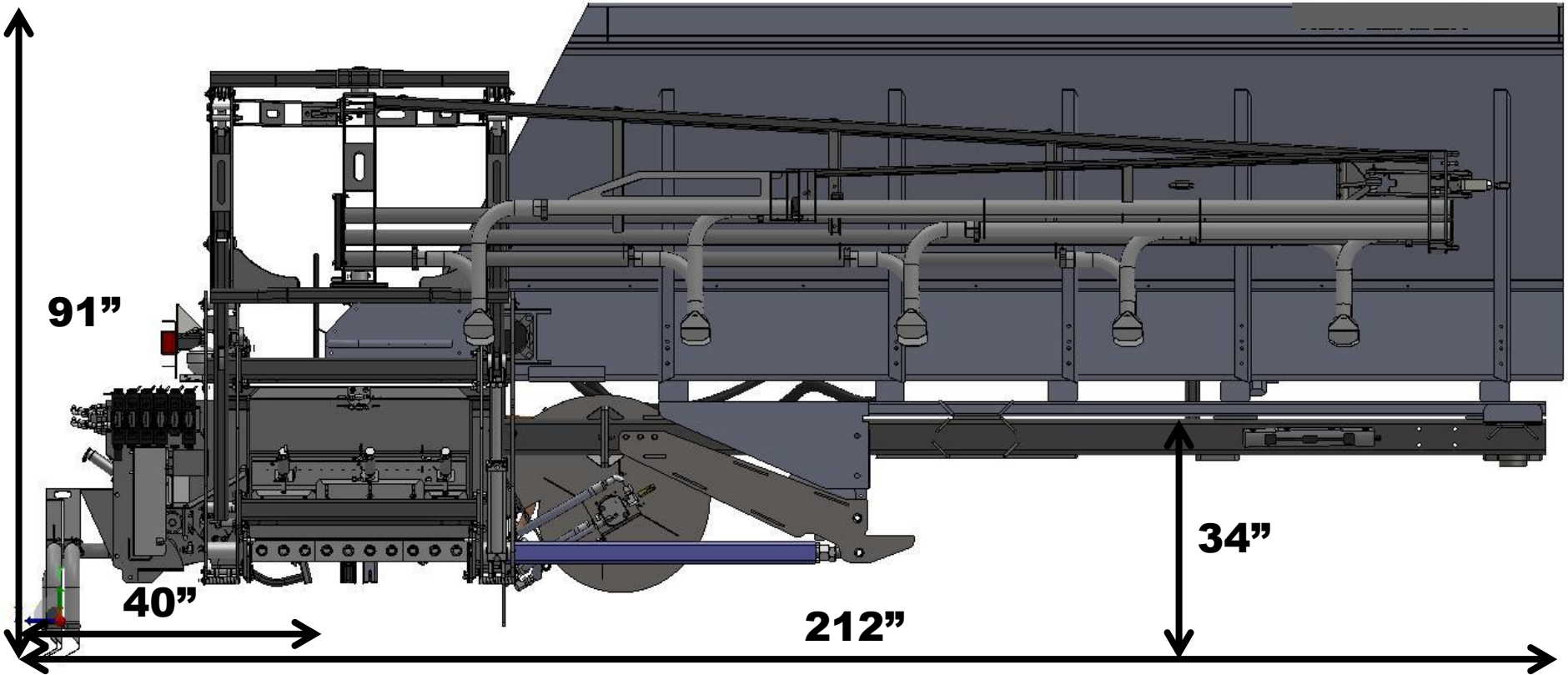


 **AULARI**

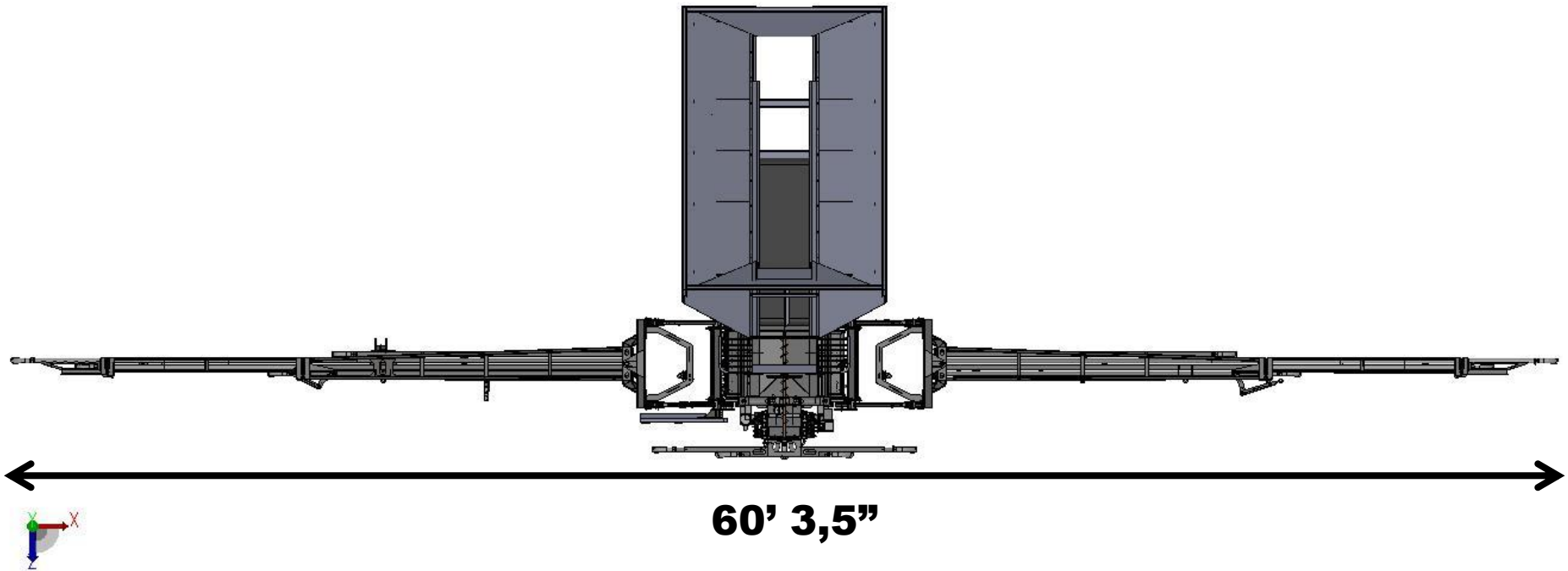
Overall dimensions



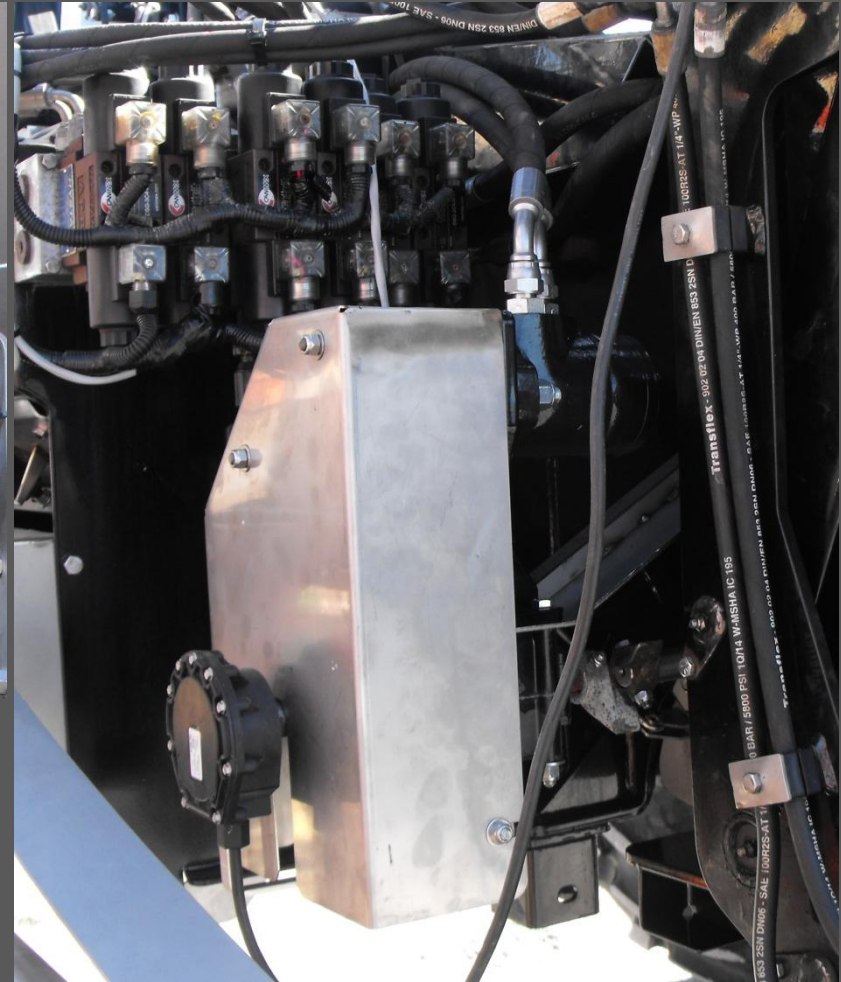
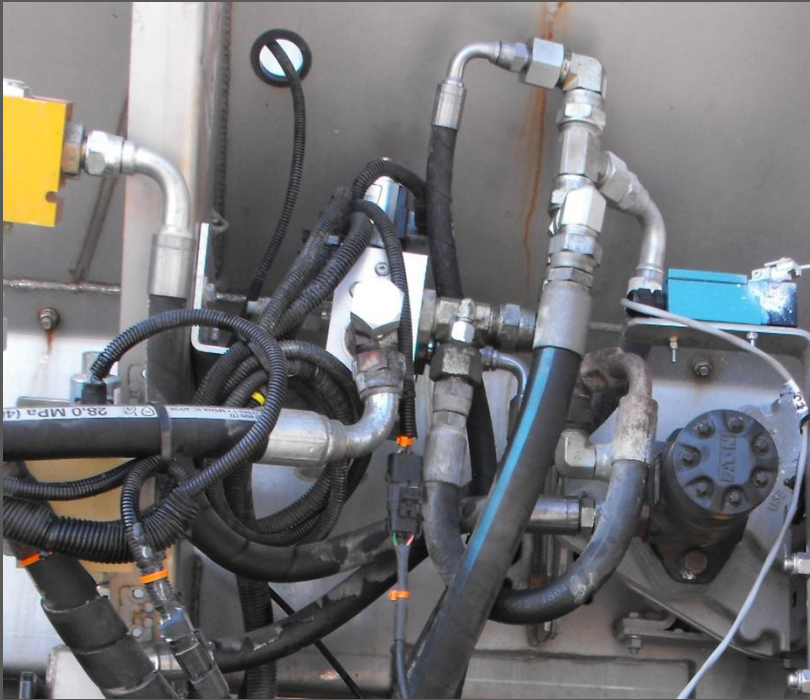
Overall dimensions



Overall dimensions



Features (Variable rate)



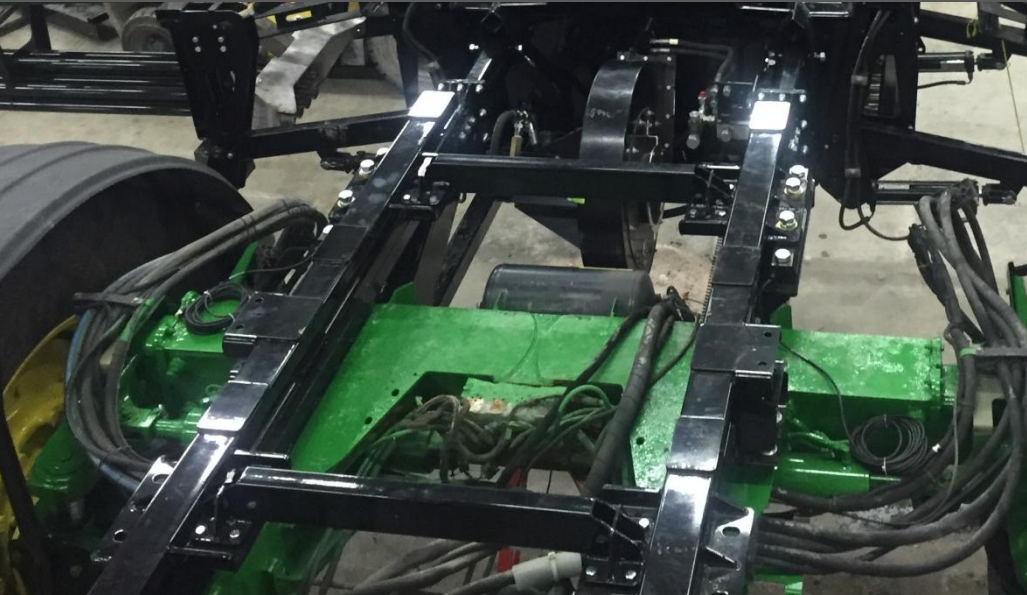
**Reuse the PWM valve of
the spinner spreader.
Works with every rate
controller**

Features (Section Control)



**5 sections can be shut with swath control
(GPS) or manually**

Features (Sub frame + Scale)



**Sub frame is added
to support air-boom**

**Scale option is
available**



 **AULARI**

Spinner Spreader VS Air-boom

Things that affect the application pattern		
	Spinner Spreader	Air-boom
Spinner speed	X	
Material weight per cubic foot	X	X
Material granule size	X	X
Material flow characteristics	X	X
Rate of delivery of material	X	X
Point of delivery of material on spinner discs	X	
Balance between deliveries to both spinner discs	X	
Angle of distributor fins on the spinner discs	X	
Cleanliness of spinners / metering shaft	X	X
Level of fertilizer in hopper	X	X
Wind	X	
Humidity	X	X
Spacing of swaths	X	

Spinner Spreader VS Air-boom

Calibration of a Precision Air-boom

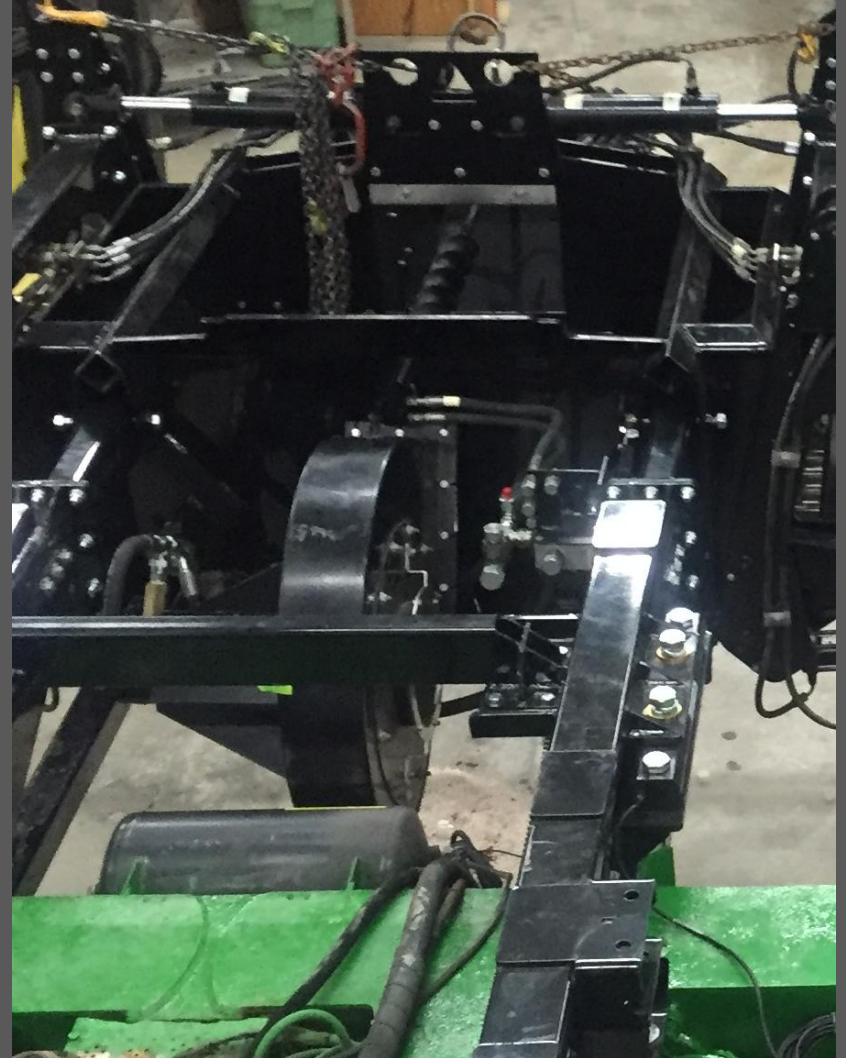
Calibration = Pan test + Scale

No need to overlap, No uneven spread pattern



Hydraulic requirement

**Blower required
23 GPM**









Industrie AULARI Inc.

620 Rang St-Roch , St-Barnabé-Sud
Québec, Canada, J0H 1G0

Office : 877-892-2126
email: info@aulari.com
web : www.aulari.com

