

PRIMARY TILLAGE

SUNFLOWER<sup>®</sup>

# CREATE A BETTER ENVIRONMENT FOR GROWTH

CHISEL PLOWS | FALLOW TILLAGE | CHISELS & RIPPERS



## SOMETIMES YOU JUST HAVE TO SHOW A FIELD WHO'S BOSS

When compaction is reducing yields, or a field needs to be brought back into production, you can rely on Sunflower® primary tillage tools to do the job efficiently.



TABLE OF CONTENTS

No matter the tool you choose — chisels, rippers, or fallow tillage tools — Sunflower tillage equipment is designed to help maximize your yield potential.

With 70 plus years of experience and millions of acres tilled, we've developed the broadest line of tools for virtually every growing condition. Very simply, Sunflower does it right. Our designs are fine-tuned to work precisely and easily. Whatever your soil type or tillage practice, Sunflower is your best choice for rugged, reliable performance.

Give your seeds, your crop, your farm the best shot at success. Choose Sunflower.

WHY  
SUNFLOWER

2

CHISEL  
PLOWS

4

FALLOW  
TILLAGE

8

CHISELS  
& RIPPERS

12

ATTACHMENTS

18

SPECIFICATIONS

20



## CHISEL YOUR WAY TO HIGHER YIELDS

With Sunflower chisel plows, you can eliminate compaction and cover more acres than with traditional primary tillage tools. Chisel plows break up shallow to mid-level compaction for better water management and reduced root resistance. Sunflower chisels have the design, balance and load tolerance to maintain depth, resulting in uniform soil shatter. Select from two shank spacing options, both ensure full soil shatter, allowing for the clear flow of material while minimizing residue buildup. Finally, Sunflower chisel plows offer the finishing attachments that break up clods and level the surface.

### Walking Tandems

Walking tandems are available on all models 30 feet and larger, allowing the machine to follow ground contouring precisely, maintaining a consistent shank depth and soil shatter. The walking tandem pivots on a set of greaseable tapered roller bearings for smooth, long-lasting service. Zerk-equipped six-bolt hubs and heavy-duty 2-inch slip-in spindles feature triple-lip seals.

### Rephasing Hydraulic-Lift System with Single-Point Depth Control

The rephasing hydraulic-lift system features two 4 x 8-inch cylinders with hydraulic stroke control and matching 3 3/4 x 8-inch slave cylinders.

### Spring-Cushion Shanks

Spring-cushion shanks are available in two pressure settings (650 and 1000 pounds) to handle all types of chiseling and have 11 inches of vertical travel to clear obstructions. The edge-bent shanks feature 30 inches (1000 pounds) or 32 inches (650 pounds) of under-frame clearance and measure 1 1/4 x 2 inches.



### **Adjustable Hitch**

Ratchet-jack adjustment allows easy and precise leveling of the frame from front to rear.

**Bob Lindsay needed a chisel plow that could perform in the heavy soils he farms in western Oregon. "Our ground is hard, so it takes a plow that's really put together," he says. "I looked around at quite a few, and the 2530 sure looked like the best one. It's held together. It's very stout."**

**Bob Lindsay**  
Shedd, OR

Farms 2,000 acres, growing annual ryegrass for seed.  
Sunflower 2530 Chisel Plow



# 2510

## CHISEL PLOWS

### Uniform and consistent

WORKING WIDTHS FROM 13' TO 17'

The Sunflower 2510 delivers a uniform and consistent result by using one of two shank options: a 650 pound or 1,000 pound point load, with 12- or 15-inch shank spacing.

- The tool stays balanced with walking tandems at all wheel lift locations.
- Shank depth control is precise across the width of the tool.

# 2530

## CHISEL PLOWS

### Tough conditions and compacted fields call for a hardy machine

WORKING WIDTHS FROM 19' TO 47'

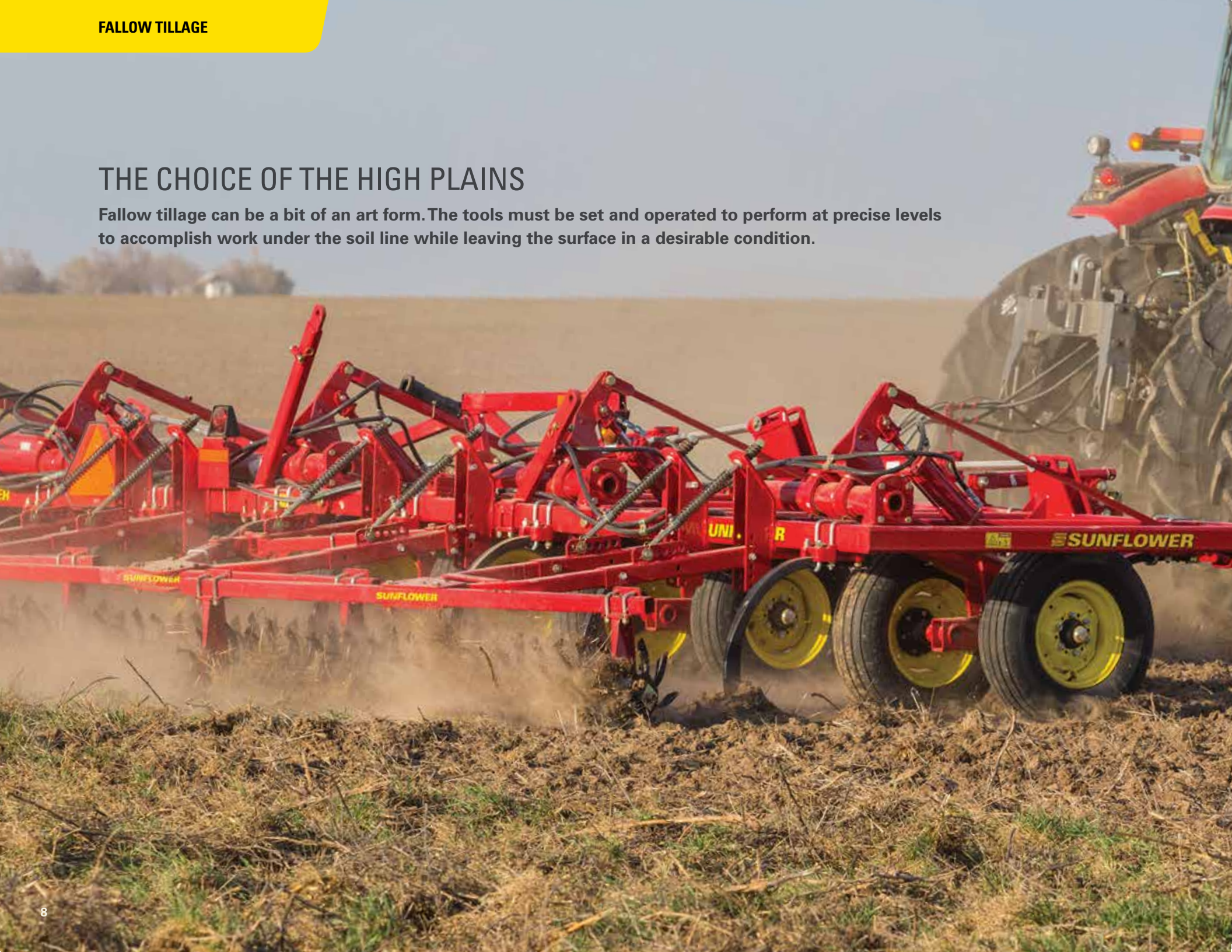
The Sunflower 2530 is the largest chisel plow we build. Its high performance is due to the heavy-duty, 4 x 4-inch all-welded 140-inch-deep frame to maintain shank and point position, affording exceptional material flow-through.

- The 2530 Series features walking tandems at all wheel locations, providing frame stability. That stability maintains the frame height to keep the chisel points at a set depth no matter how rolling the terrain may be.
- The level-lift tongue comes as standard equipment, while the ground contour-following floating-hitch frame configuration is available as optional equipment.



## THE CHOICE OF THE HIGH PLAINS

Fallow tillage can be a bit of an art form. The tools must be set and operated to perform at precise levels to accomplish work under the soil line while leaving the surface in a desirable condition.





3000

**SUNFLOWER FALLOW-KING**

**King of the fallow tillage tools**

WORKING WIDTHS FROM 21' TO 49'

Performing both primary and secondary tillage activities, the Sunflower Fallow-King is built especially for the wide range of soil conditions found on the High Plains, and, like all Sunflower tillage tools, Fallow-King does a lot more than a good job. It leaves your fields properly tilled, weeds undercut, and a nearly perfect bed of mulch in your freshly tilled soil.

- The entire Fallow-King Series features two rows of shanks and frames that flex every 7 feet to hug the terrain on flat or rolling ground, even over terraces. You can run shallow without the fear of skipping or gouging, and Sunflower's computer design features optimum shank placement and provides a 6-inch overlap between the 26-inch sweeps for maximum weed kill.
- The exclusive Sunflower treader design provides unparalleled soil aeration, even in heavy surface residue.
- Sunflower's exclusive "on-edge" shanks are 1 1/4 inches wide x 2 1/2 inches thick and provide a true 30 inches of residue clearance.
- Other features include:
  - Walking tandems available on all sections
  - Ratchet jacks that adjust to precisely level the frame front to rear
  - Front-mounted single-point depth control
  - Gauge wheels that are standard equipment on four-through seven-section machines
  - Rockshafts mounted at the top of the frame for superior ground clearance and residue flow
  - Optional coulter assemblies





# 3300

## BLADE PLOWS

**Tillage quality in a wide variety of soil types and field conditions**

WORKING WIDTHS FROM 30' TO 55'

We design our equipment with the operator in mind by listening to our customers and delivering what they want. High on your list was durable, reduced-maintenance equipment. Sunflower delivers by incorporating UHMW polymer technology in all high-wear areas including transports, coulter supports and pivot bushings between the hinge joint and attaching wing frame.

- The 3300 incorporates adjustable swivel linkages between the rockshafts at each frame for easy and fast adjustments and leveling.
- Other features include:
  - A third hinge on wing frames, which provides extra strength and longer life to frame connections
  - Reinforced tongue and center frame
  - Box-brace standards that add strength and stability to the blade standards
  - Large 22-inch rolling coulters with five-bolt hubs
  - In-line wheel placement, which provides a single frame pivot point and allows the blades and standards to work together
  - Easily adjustable swivel linkage between rockshafts that simplifies frame leveling



**3600**

**BLADE PLOWS**

**Cut costs and enhance yields**

WORKING WIDTHS FROM 30' TO 55'

Using Sunflower's 3600 Blade Plow as a fallow maintenance tool not only costs less per acre than chemical fallow. Plus, tillage offers additional benefits such as fracturing surface compaction, improving water/air infiltration and creating a better environment for seed germination and root growth. What does this mean to you? An improvement to your bottom line through reducing cost and enhancing yields.

- An over-frame hitch spans front to rear to provide uniform down pressure over the entire frame.
- High-clearance box standards feature a four-bolt mount that provides maximum stability.
- Other features include:
  - In-line wheel placement throughout the plow
  - Heavy-duty rolling coulters with 22-inch blades
  - Available in 5-, 6-, 7-, 9-, and 11-section models

## SHATTER WHAT'S HIDING BELOW YOUR SOIL SURFACE

The best time for dealing with compaction is in the fall during your post-harvest tillage. Breaking up hardpan and roughing up the surface will improve water and nutrient infiltration over the winter. Primary tillage tools, such as a coulter chisel, disc ripper or disc chisel, not only shatter deep compaction, but can also cut and mix heavy residue, and leave the field level behind the tool.

### Walking Tandems

The walking beam pivot assemblies consist of two tapered roller bearings with triple-lipped seals. For ease of service and strength, the wheel spindles slip into the spindle tubes of the walking beams.

Featured on all series.

### Maintenance-Free Hinges

Heavy-duty wing hinges incorporate maintenance-free UHMW plastic sleeves that eliminate greasing and increase service life.

Featured on all models except 4630 Series.

### Patented C-Flex™ Mounts

The C-Flex bearing standards absorb disc shock created by rocks, field obstructions and normal discing. Additional C-Flex benefits include the ability to clear residue better than conventional rigid standards; extended bearing, spool and disc blade life; and easy maintenance.

Featured on all series.

### Hydraulically Adjusted Coulter Gangs

Gangs feature two rephasing hydraulic lift cylinders (protected by shock-absorbing mounts) to control the front gang depths with on-the-go adjustments.

Available on 4213 and 4233 Series only.

### Heavy-Duty Frame

All Sunflower primary tillage tools feature an all-welded, box-beam frame with specially formed gussets in all high-stress areas for maximum reliability and long service life.

Featured on all series models.



## SHANK OPTIONS

### Spring-trip shank mounts

- 4600 Series spring-trip parabolic shank mounts — 3,500-pound point load
- 4700 Series spring-trip shank mount (all shank options) — 4,250-pound point load

### Shear-bolt shank mounts

4700 Series shear-bolt trip shank mounts (all shank options) — 7,000-pound shear point

### Minimum-disturbance shank

The minimal-disturbance shanks of the Sunflower 4700 Series have a maximum working depth of 20 inches. The straight-leg shank is made of 3/4-inch high-strength abrasion-resistant steel with a chromium carbide shin guard to protect the shank from wear.

### Reduced-disturbance shank

The straight-leg reduced-disturbance shank is made of 1 3/4-inch high-strength abrasion-resistant steel with a chromium carbide shin guard to protect the shank from wear. Available on 4700 Series In-Line Ripper only.

### Parabolic shank

Made of 1 1/4-inch-thick high-strength abrasion-resistant steel. Leading edges of each shank are protected by a replaceable chromium carbide shin guard for longevity. Maximum working depth is 16 inches.

Available on 4600 and 4700 series only.

**Jason Woodring likes the 4511 disc chisel disc so much, he runs two of them. “It leaves the ground level,” he says. “We traded in a John Deere ... and I like this a lot better.”**

**Jason Woodring**  
Fredericksburg, IA

Farms 4,000 acres, growing corn and soybeans.  
Sunflower 4511 Disc Chisel Disc

**4213****RIGID-FRAME COULTER CHISELS****Eliminate soil compaction while managing crop residue**

WORKING WIDTHS FROM 8'9" TO 18'9"

With coulters spaced every 7 1/2 inches and shanks on 15-inch centers, and sizes beginning at 7 shanks, the 4213 fits well in any farming operation.

- This coulters chisel can completely fracture hardpans and eliminate soil compaction to a depth of 12 inches that a wider-spaced shank arrangement would miss. It also opens up the surface for improved water intake and reduces erosion.
- Spring-cushioned coulters gangs feature 7 1/2-inch blade spacing and heavy trunnion-type maintenance-free bearings.
- 50-pound spacer spools add additional weight for more ground penetration.

**4233****FLEXIBLE-FRAME COULTER CHISELS****Complete crucial primary tillage tasks quickly**

WORKING WIDTHS FROM 21'3" TO 28'9"

The 4233 covers a lot of acres in the short window of opportunity that large-acreage operations with higher horsepower tractors require.

- The coulters chisel completely fractures hardpans and eliminates soil compaction to a depth of 12 inches.
- Chisels on 15-inch centers fracture soil structures that wider shank spacings miss.
- With the coulters on 7 1/2 inches, the crop residue remaining on the soil surface is sufficiently sized to flow through the tool easily.
- Features the same heavy-duty construction as the 4213 but in a three-section design.
- Spring-cushioned coulters gangs feature 50-pound spacer spools and trunnion-mounted maintenance-free bearings.

**4412**

**DISC RIPPER DISCS**

**One-pass yield improvement**

WORKING WIDTHS OF 12'5" AND 17'6"

The 4412 disc ripper is designed for deep tillage to a maximum depth of 18 inches. The combination of disc gangs and shanks effectively sizes and incorporates crop residue, while shattering hardpan for better water and nutrient intake.

- The 4412 is built around the proven performance of the staggered front- and rear-gang design, which leaves the field surface smooth and ridge-free.
- Heavy-duty auto-reset shanks with a 3,500-pound point load ensure that the unit maintains the desired working depth and ripper point position.
- The parallel linkage maintains the correct gang and blade attack angles. Disc gang cutting depth is easily adjusted independently of the shank depth from the cab of the tractor.

**4511**  
**4530**

**DISC CHISEL DISCS**

**Narrowly spaced to get what the others leave behind**

WORKING WIDTHS FROM 11'3" TO 23'9"

The 4511 features shanks on 15-inch centers and disc gangs both front and rear, giving the machine greater ability to fracture and lift soil in adverse conditions.

- Net results are uniform soil fracturing to a depth of up to 12 inches and a soil profile of mixed residue.
- Operators should always probe their fields prior to deep tillage to determine the depth of the compaction zone. Studies have found soil should be fractured 1 1/2 to 2 inches below the compaction zone for best results.







**4610**  
**4630**

**DISC RIPPERS**

**24-inch shank spacing shatters it all**

WORKING WIDTHS FROM 14' TO 26'

The 4600 Series is designed to be the very best in crop residue and soil management. Available models range from 7 to 13 shanks; three models in folding configurations.

**A Triple Threat**

- Equipped with two ranks of large, 28-inch, individually mounted disc blades, the 4600 Series tools aggressively size and incorporate heavy crop residue.
- Auto-reset parabolic shanks are narrowly spaced (24 inches) to shatter soil compaction thoroughly.
- Complete your 4600 with a choice of finishing attachments designed to produce the field finish you want.

This triple combination makes the Sunflower 4600 Series disc ripper a very versatile tool.

- The disc blades are mounted in two ranks to provide ample room (15 inches) between the C-Flex mountings to move heavy crop residue through the gangs, but the narrow overall blade spacing (7 1/2 inches) sizes material properly.

- The operator has total on-the-go control of disc gang depth from the cab.
- Three ripper-point options match soil conditions, equipping the narrowly spaced shanks to ensure complete soil fracturing.
- Four distinctly different attachments can be changed to suit different crop and soil conditions.
- Other features include:
  - Self-leveling, all-welded frame
  - Self-leveling clevis
  - Hydraulic jack stand
  - Independent disc gangs

**4710**  
**4730**

**IN-LINE COULTER RIPPERS**

**A rugged machine for challenging soil and residue conditions**

WORKING WIDTHS FROM 12'5" TO 30'

The Sunflower 4700 Series provides deep tillage for primary tillage needs.

- These versatile rippers are built on a solid frame with heavy-duty shanks designed to penetrate heavily compacted soils. When equipped with the optional coultter blades, the shanks easily slice through tough crop residue to maximize crop yield potential.
- Can be customized with minimum-disturbance shanks to shatter soil compaction, while leaving the surface residue virtually undisturbed, or with parabolic shanks to eliminate compaction while inverting the soil stratum.
- Finally, the in-line coultter rippers can be transformed into a slot-till tool by selecting the row-sealer and bed-buster options.
- Other features include:
  - 5-, 7-, and 8-shank models
  - Heavy 4-foot x 6-foot x 3/8-inch frame
  - Three-point hitch



<p><b>ATTACHMENTS</b></p> <p>To learn more about our available attachments, visit <a href="http://sunflowermfg.com">sunflowermfg.com</a> and search by the product name.</p>	<p><b>2510</b> CHISEL PLOWS</p>	<p><b>2530</b> CHISEL PLOWS</p>	<p><b>3000</b> FALLOW-KING</p>	<p><b>3300</b> BLADE PLOWS</p>	<p><b>3600</b> BLADE PLOWS</p>
Coil Tines	■	■			
Finishing Reels	■	■			
3- and 4-Row Coil Tine Harrows	■	■			
2-Row Coil Tine and Flat-Bar Reel	■	■			
Conservation and Standard Treader Wheels			■	■	■
Rolling Treader			■	■	■
Rear-Tow Hitches			■	■	■
Spike Drag Harrows					
HD Coil Tine Harrows					
5-Bar Spike Tooth Harrow					
2-Bar Coil Tine Harrow and Reel					
Chopper Reel					

<b>4213</b> RIGID-FRAME COULTER CHISELS	<b>4233</b> FLEXIBLE-FRAME COULTER CHISELS	<b>4412</b> DISC RIPPER DISCS	<b>4511</b> <b>4530</b> DISC CHISEL DISCS	<b>4610</b> <b>4630</b> DISC RIPPERS	<b>4710</b> <b>4730</b> IN-LINE COULTER RIPPERS
■	■	■	■	■	■
■	■				
■	■	■	■	■	■
■	■		■	■	
3-row configurations	3-row configurations		3-row configurations	3- or 4-row configurations	
■	■		■	■	
				■	
■	■				

# SPECIFICATIONS

Model	Working width ft. in. (m) Shank spacing 12"   15"		Transport width ft. in. (m)	Transport height ft. in. (m)	Est. weight lbs. (kg.) Shank spacing 12"   15"		HP requirements
<b>2510</b>							
2510-13	13'0" (4.0)	12'6" (3.8)	13'6" (4.1)	6'8" (2.8)	6,694 (3,036)	6,289 (2,853)	10 to 15 HP per shank
2510-15	15'0" (4.6)	15'0" (4.6)	14'8" (4.4)	6'8" (2.8)	7,024 (3,186)	6,619 (3,002)	
2510-17	17'0" (5.2)	17'6" (5.3)	17'1" (5.2)	6'8" (2.8)	7,456 (3,382)	7,051 (3,198)	
<b>2530</b>							
2530-19	19'0" (5.79)   N/A		14'1" (4.3)	9'9" (3.0)	8,652 (3,925)   N/A		10 to 15 HP per shank
2530-19-21	21'0" (6.4)	20'0" (6.1)	14'1" (4.3)	9'11" (3.0)	8,977 (4,072)	8,302 (3,766)	
2530-19-23	23'0" (7.0)	22'6" (6.9)	14'1" (4.3)	10'1" (3.1)	9,410 (4,268)	8,735 (3,962)	
2530-25	25'0" (7.6)	25'0" (7.6)	14'1" (4.3)	10'1" (3.1)	11,404 (5,173)	10,729 (4,867)	
2530-25-27	27'0" (8.2)	27'6" (8.4)	14'1" (4.3)	11'1" (3.4)	11,734 (5,325)	11,059 (5,016)	
2530-25-29	29'0" (8.8)	30'0" (9.1)	14'1" (4.3)	11'8" (3.6)	12,167 (5,519)	11,452 (5,194)	
2530-31	31'0" (9.5)	30'0" (9.1)	19'2" (5.8)	12'6" (3.8)	15,171 (6,882)	14,253 (6,465)	
2530-31-33	33'0" (10.1)	32'6" (9.9)	19'2" (5.8)	13'6" (4.1)	15,528 (7,044)	14,583 (6,615)	
2530-31-35	35'0" (10.7)	35'0" (10.7)	19'2" (5.8)	14'6" (4.4)	15,961 (7,240)	15,016 (6,811)	
2530-31-37	37'0" (11.3)	37'6" (11.4)	19'2" (5.8)	12'6" (3.8)	17,267 (7,832)	16,322 (7,404)	
2530-31-39	39'0" (11.9)	40'0" (12.2)	19'2" (5.8)	12'6" (3.8)	17,597 (7,982)	16,652 (7,553)	
2530-31-41	41'0" (12.5)	42'6" (13)	19'2" (5.8)	12'6" (3.8)	18,029 (8,178)	17,084 (7,749)	
2530-37	37'0" (11.2)	37'6" (11.4)	19'2" (5.8)	15'6" (4.7)	16,649 (7,552)	15,704 (7,123)	
2530-39	39'0" (11.9)	40'0" (12.2)	19'2" (5.8)	16'6" (5.0)	16,979 (7,702)	16,034 (7,273)	
2530-37-43	43'0" (13.1)	42'6" (13)	19'2" (5.8)	16'6" (5.0)	18,767 (8,513)	17,552 (7,962)	
2530-37-45	45'0" (13.7)	45'0" (13.7)	19'2" (5.8)	16'6" (5.0)	19,097 (8,662)	17,882 (8,111)	
2530-37-47	47'0" (14.3)	47'6" (14.5)	19'2" (5.8)	16'6" (5.0)	19,530 (8,859)	18,315 (8,308)	

NC = Narrow center  
 NT = Narrow transport series  
 RG = Rigid gang  
 SCG = Spring cushion gang  
 WC = Wide center

Note: Specifications may vary based on tires, hydraulic system, attachments or other possible variances.  
 \* Auto-reset shank

Model	Working width ft. in. (m) Shank spacing 12"   15"	Transport width ft. in. (m)	Transport height ft. in. (m)	Est. weight lbs. (kg.) Shank spacing 12"   15"	HP requirements
<b>3000</b>					
3030	21' & 25' (6.4 & 7.6)	14'5" (4.4)	10'8" & 12'4" (3.2 & 3.8)	5,944 & 6,160 (2,696 & 2,794)	6 to 8 HP/ft.
3040	28' & 32' (8.5 & 9.7)	21'2" (6.4)	10'8" & 12'4" (3.2 & 3.8)	8,044 & 8,274 (3,649 & 3,753)	
3050-35	35' (10.7)	21'3" (6.5)	12'8" (3.9)	9,759 (4,427)	
3060-42	42' (12.8)	22'8" (6.9)	13' (4.0)	11,874 (5,386)	
3070-49	49' (14.9)	24' (7.3)	15'6" (4.7)	13,650 (6,192)	
<b>3300</b>					
3372-40	40' (12.2)	24' (7.3)	11'9" (3.6)	12,718 (5,769)	6 to 8 HP/ft.
3392-52	52' (15.8)	26'5" (8.1)	13'9" (4.2)	15,280 (6,931)	
<b>3600</b>					
3662-30	30'6" (9.3)	15'6" (4.7)	N/A	7,787 (3,532)*	6 to 8 HP/ft.
3672-35	35'6" (10.8)	20'6" (6.3)		8,742 (3,965)*	
3692-45	45'6" (7.0)	22'9" (7.0)		13,733 (6,229)*	
3612-55	55'6" (7.7)	25'3" (7.7)		17,803 (8,075)*	
<b>4213</b>					
4213-7	8'9" (2.7)	9'8" (3.0)	N/A	6,068 (2,752)   6,760 (3,066)*	20 to 25 HP per shank
4213-9	11'3" (3.4)	10'11" (3.3)		6,632 (3,008)   7,522 (3,412)*	
4213-11	13'9" (4.2)	14'3" (4.3)		7,602 (3,448)   8,690 (3,942)*	
4213-13	16'3" (5.0)	16'2" (4.9)		8,162 (3,702)   9,448 (4,285)*	
4213-15	18'9" (5.7)	18'9" (5.7)		9,202 (4,174)   10,692 (4,850)*	

# SPECIFICATIONS

Model	Working width ft. in. (m) Shank spacing 12"   15"	Transport width ft. in. (m)	Transport height ft. in. (m)	Est. weight lbs. (kg.) Shank spacing 12"   15"	HP requirements
<b>4233</b>					
4233-17	21'3" (6.5)	14'6" (4.4)	10'3" (3.1)	12,804 (5,808)   14,487 (6,571)*	20 to 25 HP per shank
4233-19	23'9" (7.2)	14'6" (4.4)	11'7" (3.5)	13,410 (6,082)   15,291 (6,936)*	
4233-21	26'3" (8.0)	14'6" (4.4)	13'1" (4.0)	14,364 (6,515)   16,443 (7,458)*	
4233-23	28'9" (8.8)	14'6" (4.4)	14' (4.3)	14,770 (6,699)   17,047 (7,732)*	
<b>4412</b>					
4412-5	12'6" (3.8)	15'5" (4.7)	N/A	13,615 (6,176)	40 to 50 HP per shank
4412-7	17'6" (5.3)	17'4" (5.3)	N/A	16,200 (7,348)	
<b>4511 &amp; 4530</b>					
4511-9	11'3" (3.4)	6'8" (2.0)	13'9" (4.2)	13,160 (5,969)	25 to 30 HP per shank
4511-11	13'9" (4.2)	6'8" (2.0)	17'2" (5.2)	14,385 (6,525)	
4511-13	16'3" (5.0)	16'9" (5.1)	8'9" (2.7)	16,680 (7,566)	
4511-15	18'9" (5.7)	18'8" (5.7)	10'3" (3.1)	17,900 (8,119)	
4530-19	23'9" (7.2)	18'1" (5.5)	11'7" (3.5)	24,360 (11,049)	
<b>4610 &amp; 4630</b>					
4610-07	14' (4.3)	14'5" (4.4)	7'0" (2.1)	17,036 (7,727)	40 to 50 HP per shank
4610-09	18' (5.5)	19'7" (6.0)	7'0" (2.1)	20,118 (9,125)	
4630-09	18' (5.5)	15'9" (4.8)	11'10" (3.6)	21,542 (9,771)	
4630-11	22' (6.7)	19'3" (5.9)	13'6" (4.1)	28,376 (12,871)	
4630-13	26' (7.9)	19'3" (5.9)	13'6" (4.1)	29,689 (13,467)	
<b>4710 &amp; 4730</b>					
4710-4	10'0" (3.0)	10'10" (3.3)	N/A	2,639 (1,197)	35 to 40 HP per shank
4710-5	12'6" (3.8)	10'10" (3.3)	N/A	2,971 (1,348)	
4710-7	17'6" (5.3)	16'2" (4.9)	N/A	4,058 (1,841)	
4710-8	20' (6.1)	20'2" (6.2)	N/A	4,516 (2,048)	
4730-8	20' (6.1)	12' (3.7)	11' (3.4)	5,392 (2,446)	
4730-12	30' (9.1)	16'5" (5.0)	15' (4.6)	11,064 (5,019)	

NC = Narrow center  
 NT = Narrow transport series  
 RG = Rigid gang  
 SCG = Spring cushion gang  
 WC = Wide center

Note: Specifications may vary based on tires, hydraulic system, attachments or other possible variances.

\* Auto-reset shank

## MAXIMIZE UPTIME WITH AGCO PARTS

Your AGCO dealer offers a complete line of the genuine parts and accessories that were designed, tested, and engineered by the same people who build your Sunflower products. In addition to quality parts for all AGCO brands, your AGCO dealer provides top-quality service from professionally trained technicians. Learn more at [agcoparts.com](http://agcoparts.com).





For more than 25 years, in more than 140 countries worldwide, AGCO has been on a mission to become the single resource farmers can depend on for innovative, leading-edge thinking, equipment and technology. And, today, you know AGCO brands, even if you don't know the AGCO name. While AGCO equipment may not all share the same logo or same color, they all have one thing in common — the ability to help farmers be as productive and profitable as they possibly can be, regardless of the tasks at hand. [agcocorp.com](http://agcocorp.com)

**FENDT**



**MASSEY FERGUSON**

*Challenger*

**SUNFLOWER**

AGCO may at any time, and from time to time, for technical or other necessary reasons, modify any of the data, specifications or warranty of the products described herein. Some equipment shown may be optional. Attention: Photographs in this publication may show protective shields and guards open or removed for the purposes of illustration. Be certain all shields and guards are in place during operation.

© 2019 AGCO Corporation. Massey Ferguson is a brand of AGCO Corporation. AGCO®, AGCO Finance® and Massey Ferguson® are trademarks of AGCO. All rights reserved. SF18B002CR .1 POD



[sunflowermfg.com](http://sunflowermfg.com)

