

# S7 classic

50-120 HP Ø max. 7 cm [2.8 inch]

## The expert among the medium-power mulchers with „extreme“ side shift

With their hallmark cutting-edge features and innovative design, S7 mulchers are the perfect solution for maintaining roadsides, lawns, pastures and green spaces. Both the hammers and counter cutters are made of tempered steel for easy mulching of grass, branches and prunings with a diameter of up to 7 cm. For an always clean cut, the hammers, and even the counter cutters, can be replaced. The inside of the chassis is fitted with interchangeable wear-resistant plates, suitable for even the most heavy-duty tasks.

The **S7 classic** comes with a hydraulic parallel shift which allows the mulcher to extend sideways up to one metre which makes the machine extremely flexible.

### Standard version and characteristics

- > Mulches grass and brush up to 7 cm [2.8"]Ø
- > Working speed 3-10 km/h
- > 3 point rear linkage  
≤200: cat. 1&2, ≥225: cat. 2
- > Hydraulic parallel linkage side shift  
P-SHIFT central/right
- > Gearbox with freewheel and through shaft  
≤200: 540 rpm, ≥225: 1000 rpm
- > Belt transmission
- > Front protection with metal flaps and chains
- > Support roller, adjustable in height
- > Standard rotor with flails  
≤200: SMO, ≥225: SMW
- > 2 rows of replaceable tempered counter cutters

### Optional configuration and accessories

- > Rotor with Y flails
- > 540 or 1000 rpm gearbox
- > Extreme side shift
- > Front protection with chains & chains
- > Rubber gauge wheels instead of roller
- > Adjustable rear hood M-FLAP
- > Hydraulic adjustable rear hood
- > Attachments for undercanopy maintenance (details see separate brochure)



[YouTube www.youtube.com/seppimulcher](https://www.youtube.com/seppimulcher)

### Tools

**SMO** **SMW**

flails



Y knives



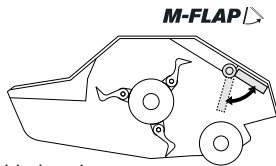
### Specifications · S7 classic

		125 [49]	150 [59]	175 [69]	200 [79]	225 [89]	250 [98]
Working width	cm [inch]	125 [49]	150 [59]	175 [69]	200 [79]	225 [89]	250 [98]
Overall width	cm [inch]	141 [56]	166 [65]	191 [75]	216 [85]	241 [95]	266 [104]
Depth	cm [inch]	125 [49]	125 [49]	125 [49]	125 [49]	139 [55]	139 [55]
Height	cm [inch]	117 [46]	117 [46]	117 [46]	117 [46]	117 [46]	117 [46]
Weight (base value)	kg [lb]	470 [1,040]	500 [1,100]	550 [1,210]	600 [1,320]	660 [1,460]	720 [1,590]
Belts	qty	4	4	4	4	4	4
Flails	qty	SMO 12	SMO 15	SMO 18	SMO 21	SMW 24	SMW 27
Y flails	qty	24	27	33	39	45	x
Nominal tractor power	HP	50-100	50-100	50-100	50-100	80-120	80-120

## S7 classic · features

Strong and robust chassis made of high-tensile steel, with replaceable wear plates.

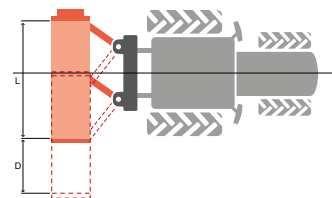
S420



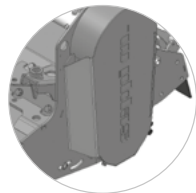
Optional adjustable hood under the rear chassis to set the degree of mulching, mechanical or hydraulic version

Parallel linkage side shift

**P/Shift** EXTREME

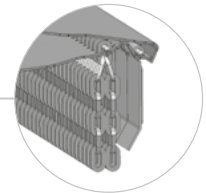


L	D standard	D option
125-200:	64 cm [25 inch]	98 cm [39 inch]
225-250:	98 cm [39 inch]	

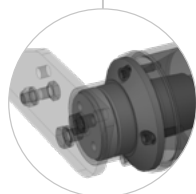
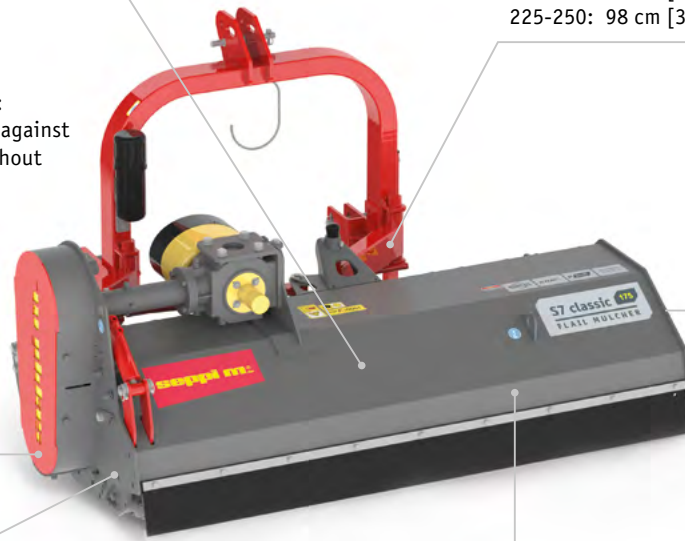


Plant protection: the plants brush against the deflector without getting trapped

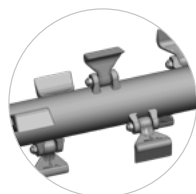
Belt Protections: Robust version, corresponds to the forestry machine design



Combined protection: the guards tilt and move the chains, creating a barrier that prevents the material from getting jammed inside the chains; the chains protect against stone ejection

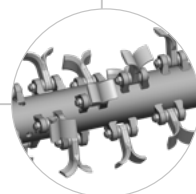


Adjustable support roller, Reinforced bearing and roller

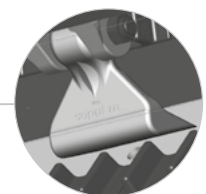


Standard rotor with SMW/SMO flails

Low power consumption at maximum throughput with HELIX ROTOR technology



Optional rotor with Y flails



Replaceable tempered counter cutters inside the chassis provide a perfect result when mulching.

