

# FUEL-VAULT®

## RECTANGULAR CONTAINED TANKS

ULC S601/S602 – 1,100 L to 5,000 L

The Rectangular Fuel-Vault® tank is engineered to store flammable and combustible liquids such as gasoline (ULC S601 only), diesel, solvents or paint products.

Easy to use and install, the double wall containment provides protection against costly and environmentally damaging leaks or ruptures. Best of all, it is manufactured by Westeel to meet or exceed all national regulations and to provide years of worry free service.

### IMPORTANT FEATURES

- Durable all steel double wall construction in a compact low profile design
- Large spillbox with removable bottom access plate and a lockable weatherproof cover
- Weather and corrosion resistant white powder coat finish on exterior
- Space between the inner and outer tank with a port to check for any fluid release from the primary tank
- Easy attachment to auxiliary equipment

### OPTIONAL EQUIPMENT

- Level controls
- Level gauges
- Fill limiter valves
- Anti-syphon valve

### ACCORDANCE COMPLIANCE

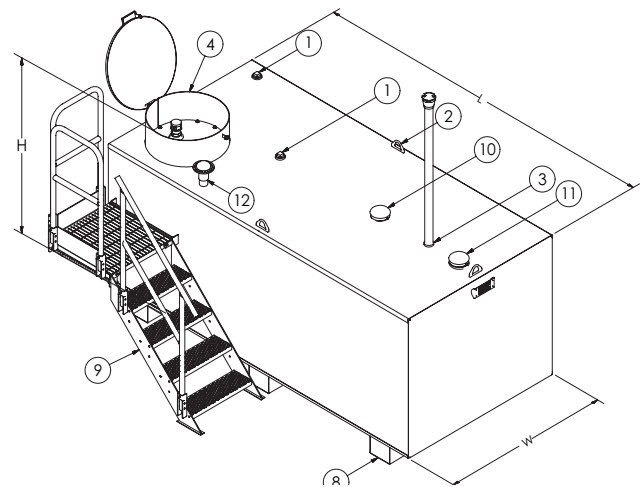
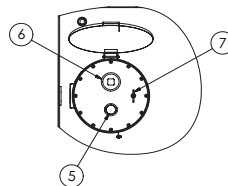
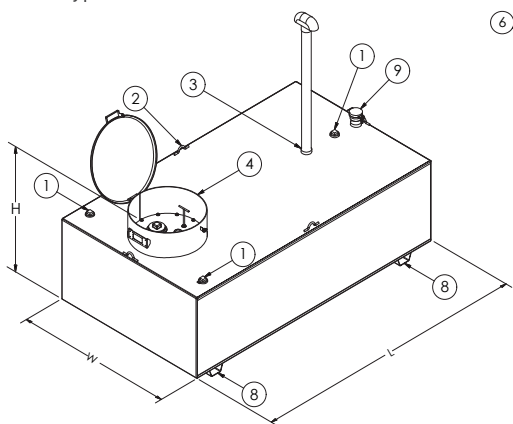
- CAN/ULC S601-07 (RFV2499 and RFV5000 models) and CAN/ULC S602-M002 (RFV1100 and RFV2400 models)

### TYPICAL APPLICATIONS

- Vehicle and equipment maintenance
- Oil and gas facilities
- Manufacturing facilities
- Agricultural facilities

### STANDARD FEATURES

01. 2" NPT – spare port
02. Lift lugs
03. Primary tank normal vent port (stack & vent cap shipped loose)
04. 24" spillbox (fill, gauge, drain)
05. 2" camlock and dust cap
06. 4" fill port
07. Drain plug
08. Support legs
09. Inspection/vent port
10. Primary emergency vent
11. Secondary emergency vent
12. Stair assembly (RFV5000 only)



### SPECIFICATIONS

MODEL NUMBER	PRIMARY TANK CAPACITY			WIDTH W		LENGTH L		HEIGHT H		WEIGHT	
	US gal	Imp gal	L	in	mm	in	mm	in	mm	lb	kg
RFV1100	300	250	1135	48.5	1231	74.4	1891	36.1	917	725	329
RFV2400	634	528	2400	57.6	1464	99.8	2535	42.6	1082	1210	556
RFV2499	660	550	2499	40.2	1020	79.7	2025	66.9	1699	1280	580
RFV-5000	1320	1099	5000	57.8	1469	120.8	3068	78.2	1986	2650	1205

**WESTEEL**

STORAGE SYSTEMS FOR THE WORLD'S  
MOST VALUABLE RESOURCES

800-665-2099 ▪ [lcs@westeel.com](mailto:lcs@westeel.com)

[westeel.com](http://westeel.com)

[@westeel\\_1905](https://twitter.com/westeel_1905)

[f/Westeel1905](https://facebook.com/Westeel1905)

Westeel Head Office Box 792,

Winnipeg, MB, Canada R3C 2N5 ▪ 204-233-7133



Consistent with Westeel policy of continued research and development of our products, we reserve the right to modify or change information contained in this publication without notice. 1015-100