



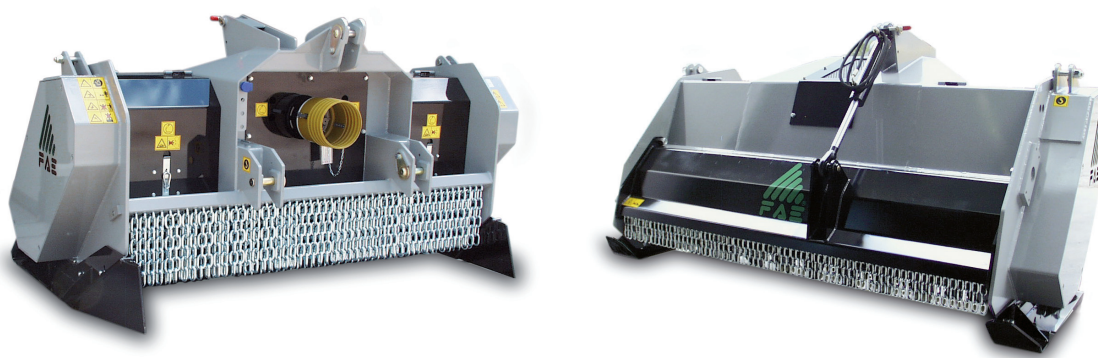
STC

Stone crushers with a max working depth of 8 inches for tractors between 80 and 220 HP

Standard equipment: dual transmission (except STC 125), PTO driveshaft with cam clutch, gearbox with freewheel, adjustable skids with interchangeable ploughshares and skid shoes, hydraulic rear hood, adjustable counter knives, possibility to choose between 540 or 1000 rpm gearbox (only for STC 125).

Options: dosing blade, road kit, hydraulic top link.

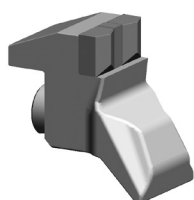
Notes: For the correct usage, a creeper gear transmission is recommended.



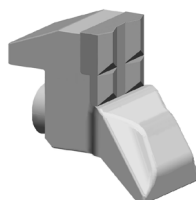
STC

Model	Tractor HP		PTO rpm	Working width inches	Overall width inches	Weight lbs	Grinding diameter inches (max)	Working depth inches (max)	Teeth q.ty/type
	Min	Max							
STC 125	80	110	540 - 1000	53	69	4079	12	8	28+4
STC 150	100	220	1000	62	79	5402	12	8	32+4
STC 175	120	220	1000	72	89	5931	12	8	38+4
STC 200	130	220	1000	81	98	6240	12	8	42+4

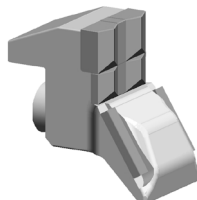
Data refers to the machine without options.



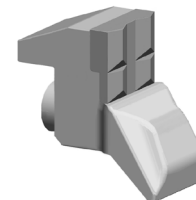
Tooth type STC/3



Tooth type STC/3/HD (option)



Tooth type STC/3/FP (option)



Tooth type STC/3/HD (side scraper)