



UML/HY UML/HY/VT

Mulcher with fixed teeth rotor for excavators having a weight between 7 and 14 t.

Standard equipment: variable displacement hydraulic piston motor from 32 to 65 cc, double relief valve with anticavitation and brake function, flow control valve, hydraulic hood. For the **UML/HY/VT** 80/45 cc variable torque hydraulic motor.

Options: custom made attachment plate with pins, diverter valve, rotor equipped with tooth type "C/HD" or "D".



UML/HY

Model	Power HP	Requirements		Excavator weight t.	Working width inches	Weight lbs	Grinding diameter inches (max)	Teeth q.ty/type C+C/SS
	Min - Max	Flow gal/min Min - Max	Pressure PSI Min - Max					
UML/HY 100	70 - 100	19 - 42	2600 - 3600	7 - 14	44	1918	6	20+2
UML/HY 125	70 - 100	19 - 42	2600 - 3600	7 - 14	53	2138	6	26+2
UML/HY 150	70 - 100	19 - 42	2600 - 3600	7 - 14	62	2359	6	32+2

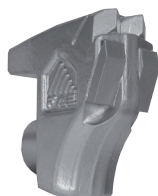
UML/HY/VT Hydraulic motor with variable torque

Model	Power HP	Requirements		Excavator weight t.	Working width inches	Weight lbs	Grinding diameter inches (max)	Teeth q.ty/type C+C/SS
	Min - Max	Flow gal/min Min - Max	Pressure PSI Min - Max					
UML/HY/VT 100	70 - 100	26 - 53	2600 - 3600	7 - 14	44	1920	6	20+2
UML/HY/VT 125	70 - 100	26 - 53	2600 - 3600	7 - 14	53	2138	6	26+2
UML/HY/VT 150	70 - 100	26 - 53	2600 - 3600	7 - 14	62	2359	6	32+2

Data data to the machine without options.



Tooth type C (standard)



Tooth type C/HD (option)



Tooth type D COBRA (option)



Tooth type C/SS (side scraper)