



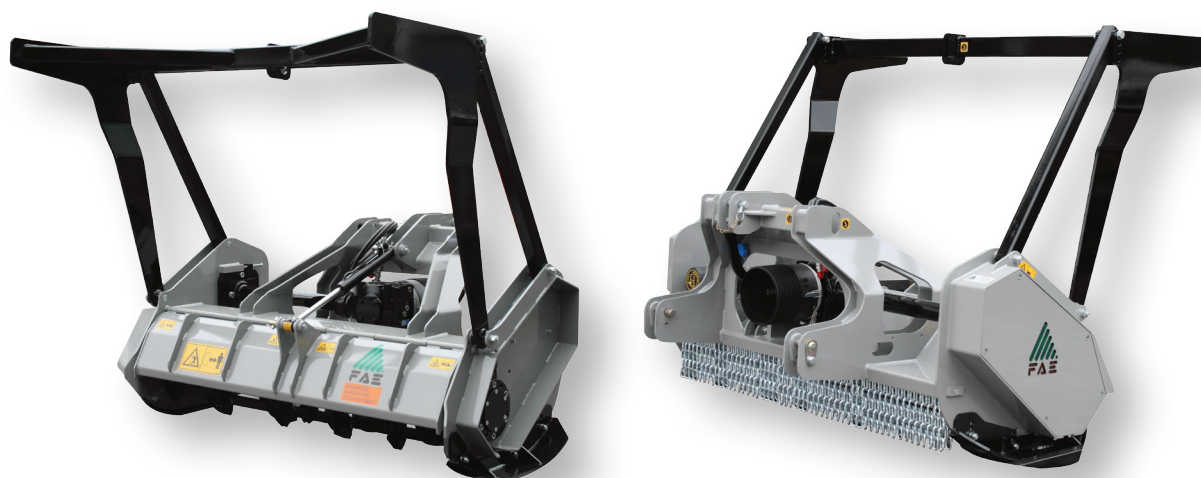
## UML/LOW

Forestry mulcher with fixed teeth rotor for tractors between 60 and 110 HP.

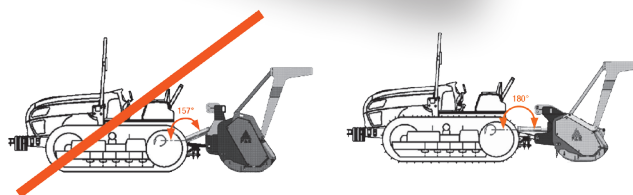
**Standard equipment:** PTO drive shaft with cam clutch, gearbox with freewheel, hydraulic rear hood, adjustable skids.

**Options:** hydraulic top link, special skids to go underground, push frame, option of rotor equipped with tooth type "C/HD" or "D".

**Notes:** For the correct usage, creeper gear transmission and reversible driving console are recommended.



Especially developed for tractors with low three point hitch (e.g. crawler tractors).



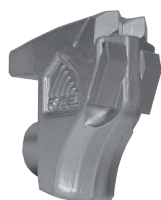
### UML/LOW

Model	Tractor HP		PTO rpm	Working width inches	Overall width inches	Weight lbs	Grinding diameter inches (max)	Teeth q.ty/type C+C/SS
	min	max						
UML/LOW 150	60	100	540	62	72	2050	8	32+2
UML/LOW 175	70	110	540	71	81	2337	8	36+2
UML/LOW 200	80	110	540	81	93	2623	8	42+2

Data refers to the machine without options.



Tooth type C (standard)



Tooth type C/HD (option)



Tooth type D COBRA (option)



Tooth type C/SS (side scraper)