



## UML/SSL/VT

Mulcher with fixed teeth rotor for skid steer loaders between 75 and 120 HP, equipped with a high flow kit.

**Standard equipment:** 110 cc variable displacement hydraulic motor, double relief valve, hydraulic hood, adjustable skids, working pressure control gauge, hydraulic hoses, guide frame.

**Options:** diverter valve, oil cooler kit, rotor equipped with tooth type "C/HD", "D" or "STCL".



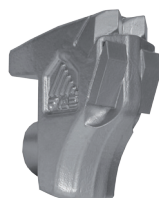
### UML/SSL/VT Hydraulic motor with variable torque

Model	Power HP		Requirements		Working width inches	Overall width inches	Weight lbs	Grinding diameter inches (max)	Teeth q.ty/type C+C/SS
	Min	Max	Flow gal/min Min - Max	Pressure PSI Min - Max					
UML/SSL/VT 125	75	120	34 - 53	2900 - 5000	52.8	64.6	2425	8	26+2
UML/SSL/VT 150	75	120	34 - 53	2900 - 5000	63	74	2756	8	32+2
UML/SSL/VT 175	75	120	34 - 53	2900 - 5000	72	83	2954	8	36+2

Data refers to the machine without options.



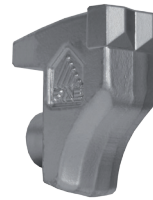
Tooth type C (standard)



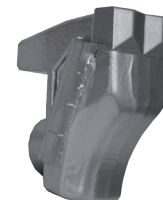
Tooth type C/HD (option)



Tooth type D COBRA (option)



Tooth type STCL (option)



Tooth type C/SS (side scraper)