

# Orchard / Vineyard

Compact & Efficient



# ZENIT



### **Compact and efficient**

Adapts to even the steepest hills and narrowest plantations. The lift mounted ZENIT mistblowers are available in 105 and 155 gallon tank sizes.

### **Wide range of air kits**

The HARDI sprayers offer a wide variety of fans and turbines in order to adapt the mistblower to your specific crop and working conditions.

### **Higher application performance and efficiency**

The quality of the air flow and the air volume generated allow higher forward speed without losing efficiency of the applications.

### **Solid and stable**

Chassis and tank design provide a very low center of gravity allowing for treatments in narrow and steep working conditions.

### **Reliable and simple**

The HARDI mistblowers are designed to be strong and easy to handle. These are the demands of today's farmer.

### **Safety and ergonomics**

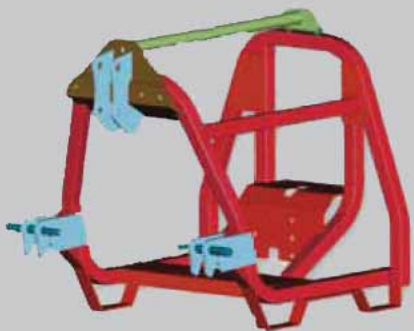
With the operator's safety in mind, the working zone is separated from the place where chemicals are handled.

### **Minimizing the farmers' operation costs**

The unique power transfer system and the air kit design secure the maximum air volume with the minimum power consumption.

### **Environmental care**

Drift control is of highest importance when we design our mistblowers, and we aim to minimize the impacts to the environment as much as possible.



Three-dimensional structural chassis which provides robustness and resistance to vibrations. The design and construction prevent chemical sedimentation and accumulation of dirt and thereby prevent corrosion.

For further protection against corrosion, the metallic parts are steel shot blasted, then treated with a powder coat paint finish.

The chassis incorporates a triple position geometry three-point hitch which enables the ZENIT to be fitted to small as well as large tractors.



### Control Units

**The BK/2** control features a simple solution for controlling the spray functions. The operating unit features a main on/off valve, 2 on/off control valves for left and right section control, manual pressure regulation and Hardi-matic mechanical rate control.



### HARDI diaphragm pumps

Designed for the application of plant protection products and can be used for distribution of liquid fertilizer. The 321 pump has 2 diaphragms. Volume ranges from 6-17 gpm, and a maximum pressure of 350 PSI.

The HARDI diaphragm pumps are:

- Self priming
- Able to run dry with out damage
- Easy to service
- Grease lubricated (dry crank case)
- Positive displacement

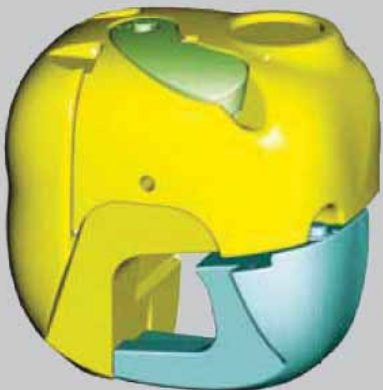


**The EVC/2** has electrical remote control of all functions and is available with 2 distribution valves. The pressure regulation valve is made of stainless steel for maximum resistance to aggressive products, and the rest of the vital parts are completely sealed off from the spray liquid. The EVC unit includes pressure equalization device and pressure gauge.



### HARDI Tanks

The ZENIT tanks are made of rotational molded polyethylene. The smooth rounded tank design optimizes the performance of the agitation system and eases tank filling and clean out. This design keeps focus on operator safety as well. 105 & 155 gal. tank sizes available



The ZENIT tanks are made of shock-proof polyethylene and is resistant to plant protection chemicals. The smooth and round design optimizes the performance of the agitation system as well as easing the tasks of filling and cleaning, always with the operator's safety in mind.



The power transmission from the tractor to the fan or the turbine goes directly through the 2-speed gear box. The air volume generated is among the highest in the market even with a very low power consumption.



### 32" Axial Fan

Long fan housing with air vanes in the inlet canalising a uniform air stream to the blower. It provides an air volume of 23,500 CFM. Deflectors type V and DT for orchards and DV for vine can be fitted to the blower housing.



### Outstanding air control with IRIS

Directing the air in a controlled manner is critical for quality spraying. Wasteful drift can be greatly reduced, spray deposits maximized, by directing and controlling the air as and when it is needed. Early in the season, for example, air outlets can be completely closed such that the spray is safely retained by the young developing plant. In contrast, air speed may need to be high when controlling mildew on maturing grape bunches hidden by foliage.



### B11 - 1 Row Grape Boom

1 row sprayer is designed for use in vineyard, berry bush and small trees up to 12' (3.5m) tall with row spacing from 8' to 14' (2.4m-4.3m). The spouts are fully flexible and individually adjustable, allowing air and spray to be directed precisely to the target area. This provides a better and more uniform coverage with a minimum of loss to the surrounding environment.



### Cannon

The Cannon is designed for single side spraying. The spout can be rotated side to side by hydraulic controls. The Cannon is the perfect choice for spraying Christmas trees, vegetables, nursery stock and even livestock.

### Spouts



Cannon atomizers



Spout with 2 atomizers



Spout with 3 atomizers



Spout with 4 atomizers



Spout with 3 nozzles



Spout with 5 nozzles

### Nozzles



1099  
Ceramic  
Disc



1299  
Ceramic Hollow  
Cone Nozzle



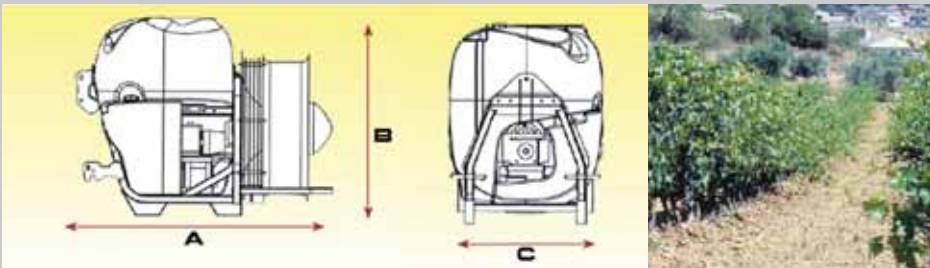
1553  
Syntal Hollow  
Cone Nozzle

### Pneumatic system

The droplets are formed when the spray liquid is torn off a shear plate by a very high-speed air stream. Droplet size: Very fine. Pressure range: 15 to 60 psi.

### Hydro-pneumatic system

The droplets are formed when the liquid passes through the nozzles. Droplet size: Small to medium. Pressure range 60 to 200 psi.



HARDI reserves the right to change the specifications without notice. Illustrations shown may include optional extras and accessories.

Weights: Empty		A	B	C	Empty		A	B	C		
ZENIT 105	Axial Fan:	805 lbs.	65"	50"	39"	ZENIT 155	Axial Fan:	226 lbs.	65"	53"	47"
ZENIT 105	B11:	805 lbs.	65"	77"	67"	ZENIT 155	B11:	226 lbs.	65"	77"	67"
ZENIT 105	Cannon	805 lbs.	65"	50"	39"	ZENIT 155	Cannon	226 lbs.	65"	53"	47"

Note: approximate weights

## HARDI NORTH AMERICA INC.

1500 West 76th St  
Davenport, IA 52806  
Phone: (563) 386-1730  
Fax: (563) 386-1280

337 Sovereign Road  
London, ON N6M 1A6  
Phone: (519) 659-2771  
Fax: (519) 659-2821



The Sprayer

[www.hardi-us.com](http://www.hardi-us.com)