



500RC

Stone crushers for special built hydraulic Prime Movers with power range between 250 and 400 HP.

Standard equipment: dual transmission, adjustable skids with interchangeable ploughshare and skid shoe, hydraulic rear hood, adjustable counter knives, hydraulic motors with variable torque.

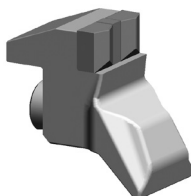
Options: customized attachment plate.



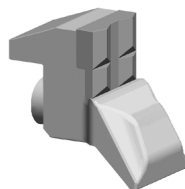
500RC

Model	Power HP	Requirements	Working width	Overall width	Weight	Working depth	Grinding	Teeth q.ty	
	Min - Max	Flow gal/min Min - Max							Pressure PSI Min - Max
500/RC - 225	250 - 400	120	5500	91	110	9702	16	20	58+4
500/RC - 250	280 - 400	120	5500	101	119	10363	16	20	66+4

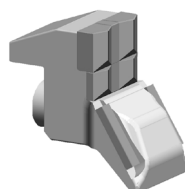
Data refers to the machine without options. Technical data for models with mechanical transmission upon request.



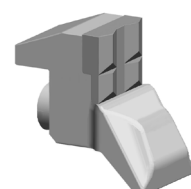
Tooth type STC/3



Tooth type STC/3/HD



Tooth type STC/3/FP



Tooth type STC/3/HD (side scraper)