

STEIGER® 370 – 620 TRACTORS

CASE II
AGRICULTURE



BE READY FOR THE CHALLENGES AHEAD WITH TRACTORS YOU CAN RELY ON.

The tools just keep getting bigger, and so does your job. It's a good thing you can depend on Case IH Steiger® series 4-wheel drive tractors to pull their share...and then some, just like they have been doing for the last 57 years. Their agronomic design provides more traction with less compaction, so Steiger tractors help you improve soil tilth and seed bed conditions. That helps you maximize your yields. Our exclusive SCR-only emissions system offers a unique combination: optimum power plus fuel efficiency. And, Steiger tractors include AFS factory-installed precision farming technology, built right in to help you get the most – from each individual seed and from your entire fleet. In the face of growing challenges, these tractors will help you be ready.

BE READY.





| | |
|---------------------------------------|--------------|
| LEADING THE INDUSTRY | 4-5 |
| POWER & PERFORMANCE | 6-7 |
| OPERATOR ENVIRONMENT | 8-9 |
| ADVANCED FARMING SYSTEMS (AFS) | 10-11 |
| POWERTRAIN | 12-13 |
| ENGINES | 14-15 |
| SCR TECHNOLOGY EVOLVES | 16-17 |
| AGRONOMIC DESIGN | 18-19 |
| THE STEIGER FAMILY | 20-21 |
| QUADTRAC® | 22-23 |
| ROWTRAC™ | 24-25 |
| MAXIMUM UPTIME | 26-27 |
| SYSTEMS APPROACH | 28-29 |
| PRODUCT SPECIFICATIONS | 30-31 |

EFFICIENT POWER. SUPERIOR PERFORMANCE. NO COMPROMISES.

Your life is all about growing things: it's what you do. Crops, livestock, your business, even your family. Steiger series tractors are designed to help you be ready for every job and every condition and to be able to do it in comfort, so you can get more done. Case IH is committed to helping you maximize your yield potential and return on investment, while at the same time, minimize your fuel and fluid consumption, work hours and stress. Efficient power available to perform in any situation – it's what you need and it's what we deliver.



The Steiger 620 tractor
was awarded

MACHINE OF THE YEAR 2014

at Agritechnica in
Hannover, Germany

UNMATCHED 4WD ADAPTABILITY.

The updated Steiger family now has seven models ranging from 370 to 620 hp to choose from with both track and wheel configurations customized for tillage, planting, seeding, nutrient placement, land leveling and tile plow operations. And no matter which Steiger you operate, you will see the advantages of the innovative Steiger design for unparalleled power to the ground and unprecedented durability. (For more on Steiger Quadtrac and Rowtrac tractors, turn to pages 22–25.)

INCREASED PRODUCTIVITY.

You won't mind the long days when you pilot from a Steiger cab because the operator environment was developed with the help of producers like you. Exclusive full-cab suspension and a 40-degree seat swivel help prevent fatigue and provide unmatched comfort and visibility. Using the intuitive Multi-Control armrest, navigate with integrated AFS AccuGuide™ autoguidance, the industry's first guidance system designed to accurately maneuver an articulated tractor in reverse. (For more on Operator Environment and AFS autoguidance, turn to pages 8–11.)

GET MORE DONE WITH LESS.

Less hassle, less fuel, less maintenance—and more power. Our exclusive, patented SCR-only emissions system is less complex than competitive Tier 4 B/Final systems, and tests show a 5–12 percent fluid operating cost advantage compared to competitors' Tier 4 B engines. Regular maintenance is less of a hassle, too, because it's performed at ground level, and less often than with any competitive tractor. Oil only needs to be changed every 600 hours. And you use one oil for all hydraulic operations. (For more on Engines and Efficient Power, turn to pages 14–17.)

CREATE A BETTER GROWING ENVIRONMENT.

Back in the old days, a matched team may have meant something quite different, but today's matched team is no less valuable when it comes to planting, tilling, fertilizing and harvesting. Pair any Steiger tractor with a Case IH crop production or other machine and you'll be on your way to helping promote a better soil environment for every valuable seed. And Case IH has a tracked version for every HD wheeled Steiger tractor—an advantage that only we provide. (For more about Steiger Agronomic Design, turn to page 18.)



EVERY HERO NEEDS A SUPERPOWER. WITH STEIGER TRACTORS, GET EFFICIENT POWER.

What producers have to accomplish is nothing less than heroic. You need all the power you can get. Case IH Steiger tractors deliver the most power in the industry. And, they're engineered to hold up to the heavy demands of high-horsepower work. In fact, because of their heavy-duty reputation, Steiger tractors are a popular choice for construction work around the world. That same technology that helps the Steiger hold up to the toughest conditions anywhere also benefits your operation. And, it gives you more usable horsepower when and where it's needed.



PUT THE STRONGEST TRACTOR ON THE MARKET TO WORK FOR YOU.

Case IH is proud to unveil an even stronger lineup of Steiger tractors—built for power, durability and efficiency. All Case IH high-horsepower engines use common rail fuel injection systems for quieter, more efficient operation and are built heavier than competitive engines with higher displacement. And thanks to the built in 10 percent power growth capabilities, the Steiger 620 delivers 682 peak hp in difficult conditions—like when the hydraulics need a little extra muscle to get through a tough spot, or if there is a sudden demand for more transport speed or PTO power.

An industry-exclusive factory-installed engine-braking option is available on all 12.9-liter engine models to save wear and tear on your brake pads and provide additional control when hauling heavy loads like slurry tanks, scraper pans or the largest implements on hilly roads.



4WD FORCE TO BOOST ROW CROP OPERATIONS.

Case IH offers 370-, 420- and 470-hp row crop Steiger tractors designed to take advantage of the large planters and strip till rigs that increasingly make 4WD an ideal choice. These long, narrow-frame tractors offer a better ride and put more power to the ground. And they maintain the principles of the Steiger family of tractors: a heavier, thicker steel frame and longer wheelbase that helps produce optimum performance.



HEAVY-DUTY COMPONENTS THAT STAND UP TO THE TEST.

Putting this much horsepower to the ground also puts a lot of torque on the axles, wheels or tracks, and frame. The Steiger 580 HD and 620 HD tractors feature 5.5-inch axles and 18-bolt hubs. All Steiger tractors also have a frame built of ½-inch-thick steel and a longer wheelbase with built-in weight. That's a real advantage in the field compared to other tractors in the industry with smaller axles, 10-bolt hubs and ⅜-inch-thick steel. Steiger gives you all the horsepower you could ask for—and the solid design that lets you use it.



HANDLE YOUR BIGGEST IMPLEMENTS.

113 gallons per minute flowing through up to eight hydraulic remote valves, and up to 20,000 pounds of hitch-lift capacity. That's enough hydraulic flow for even the biggest planters and air seeders in the industry. Steiger tractors use a second hydraulic pump to provide exactly the required hydraulic flow to each of eight remote valves. Electronic precision remote, quick-connect valves make operation even more efficient by maintaining precise flow and pressure, even in the most severe conditions. Set the system how you want, and it adjusts for changing temperature conditions through the day.

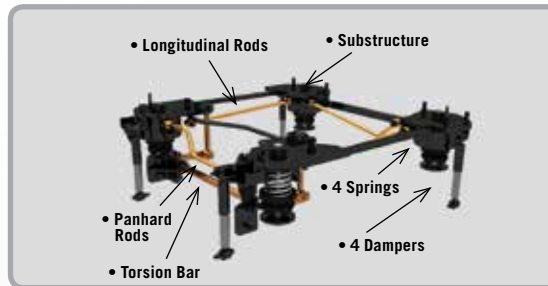
WORK SMARTER AND IN COMFORT, IN ANY CONDITIONS.

Comfort is a priority when you spend long days in the field, and Case IH delivers, thanks to input from our customers. The Steiger Surveyor® cab is the largest, most comfortable cab in the industry on a row crop chassis. And it's quiet so you can talk on your phone or multitask as needed to run your business. Case IH Steiger tractors work for you with a cab that allows greater freedom of movement in your seat for uncompromised operator visibility, and engineering that stabilizes your ride, reducing the shaking and bumping of uneven terrain. All with controls that are close by and easy to use. It's an operator environment that works with you in all field and road conditions.



HARD WORK SHOULDN'T BE A PAIN IN THE NECK.

Autoguidance systems give you more freedom in the cab to look back and check on implement operations. So your tractor's seat shouldn't force you to keep looking forward. The Case IH industry-leading 40-degree, right-hand swivel seat in Steiger tractors gives you an exclusive 360-degree full field of vision that keeps you from having to strain your neck all day. The cab, radio and HVAC controls are on the upper right, too, so everything is within easy reach.



CRUISE THROUGH LONG DAYS IN THE INDUSTRY'S FIRST SUSPENDED CAB.

Case IH 4-point cab suspension stabilizes front-to-back, side-to-side and up-and-down motions and gives the operator a smooth ride regardless of terrain with shock-absorbing components at each corner of the cab. A combination of springs, dampers and mounts fully isolate the cab from chassis-created vibrations. Standard on Quadtrac and Rowtrac and optional on wheeled HD models, the fully suspended, four-post cab suspension system eliminates repeated jarring and bouncing, and allows you to have greater focus on the job, and more control over your tractor. All without the fatigue and soreness that is typically part of a long day.



EVERY VITAL TRACTOR OPERATION. ONE SIMPLE CONTROLLER.

Adjust your speed, gears and direction, and much more without even raising your elbow. The Case IH MultiFunction control handle puts 85% of the controls operators use most at your fingertips. Guided by customer input, Case IH engineers upgraded the MultiFunction handle with new larger, raised, backlit buttons with a distinct touch and different-sized buttons. You can tell them apart by touch alone, to make switching between functions even simpler.

Using the intuitive Multi-Control armrest, navigate with integrated AFS AccuGuide autoguidance, the industry's first guidance system designed to accurately maneuver an articulated tractor in reverse.



AVAILABLE HID LIGHTING PACKAGE.



A INSTRUCTIONAL SEAT

B FOOTREST PEGS

C CARPETED FLOOR OPTION (*not shown*)

D HEATED AND COOLED VENTILATED SEAT WITH SLIDE-OUT CUSHION FOR LEG SUPPORT.

E DECELERATION PEDAL

F MULTIFUNCTION HANDLE FOR ENGINE SPEED, GEAR, SHUTTLE, HITCH AND HYDRAULIC REMOTES

G APM (AUTOMATIC PRODUCTIVITY MANAGEMENT) THUMB WHEEL CONTROL

H INSTRUMENT CLUSTER

I AFS PRO 700 CONTROL CENTER

J NEW – MULTI-CONTROL ARMREST

K FLIP-OPEN COVER FOR ADDITIONAL HITCH AND HYDRAULIC CONTROLS

L AUTOMATIC DIFFERENTIAL LOCK BUTTON

A SIMPLE AUTOGUIDANCE SYSTEM, FROM FACTORY TO FIELD.

Factory-installed AFS components, including AFS AccuGuide autoguidance, offer dependability and convenience. Integrating AFS with the tractor at the Case IH plant ensures correct installation, testing and a higher level of quality. And your tractor arrives closer to field-ready when it gets to the dealer because you don't have to wait for a technician to install additional components. You also benefit from the added capability of using the AFS Pro 700 control center with third-party implements. Even move the Pro 700 between all your Case IH equipment. Autoguidance and other precision technologies simplify your work. Getting that technology on your tractor should be just as easy.



AFS





PRECISION COMPONENTS THAT MATCH THE WAY YOU FARM.

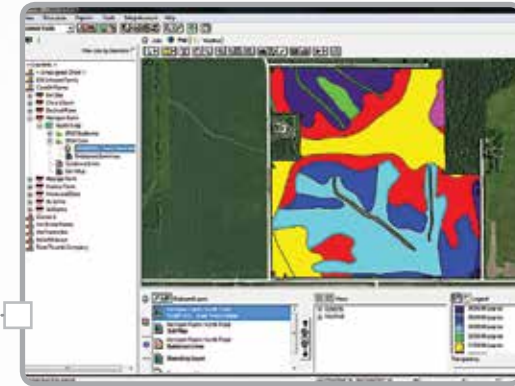
With the AFS Pro 700 control center, you benefit from added capabilities with minimal complexity. It is easy to read in daylight and adjusts for night visibility. It features one of the largest screens in the industry in a lighter, thinner package, with more computing power than its predecessor. A single touch screen display provides control functionality and simple integration for not only the tractor autoguidance, but Case IH Early Riser® planters, Precision Disk™ drills and air carts, AFS AccuControl 3rd party controlled implements, and ISOBUS compliant implements, just to name a few. Your one stop shop for total machine and implement control is the AFS Pro 700 control center.



STRAIGHT. IDENTICAL. REPEATABLE. AFS ACCUGUIDE.

This is what you expect an autoguidance system to deliver. And AFS AccuGuide does. Eliminating the guesswork of row spacing ensures each row is identical, meaning fewer end-of-row turns and overlaps. It maintains perfectly straight and repeatable rows, even in reverse, with RTK accuracy. It controls traffic patterns and decreases compaction from overlapping passes – benefits that bring higher yields. That adds up to less stress and fatigue for you at the end of the day.

Steiger tractors offer the industry's first full autoguidance system in reverse for articulated 4WD tractors, perfect for irregular-shaped fields and point rows.



SOFTWARE THAT HELPS YOU ANALYZE PRODUCTION.

AFS software pulls together numerous sources of data about your farm and gives you the information you need to consider how things are changing. Using customizable and configurable screens, layer yield and moisture maps over aerial photographs and compile additional useful information with precision farming help from third-party information providers. Adapt charts, graphs and layered maps for further analysis of variety / hybrid, plant population and soil topography. Create boundaries, autoguidance lines, compare farming practices and field-to-field yields from year to year. Because autoguidance doesn't stop working for you once you get out of your tractor. Best of all, its information you own and you decide how to use it.



AT THE BASE OF IT ALL

The AFS 372 receiver uses the GLONASS satellite system, which increases the number of satellites available to the user, resulting in less downtime during periods of low GPS satellite availability. Less downtime translates into greater productivity, efficiency, and overall system reliability.

The receiver common mount and plate allow it to be transferred easily among multiple pieces of equipment.

STEIGER DELIVERS POWER TO THE GROUND. SEASON AFTER SEASON.

The Steiger family powertrain design helps get more done—and eliminates unnecessary technology you don't need. The proven Case IH engine has passed every challenge, and is built with efficiency in mind. The powertrain features a transmission that makes the most of every hour in the field with ultra-smooth shifting. Sturdy, heavy-duty 4.5- to 5.5-inch axles carry the most operating weight in the industry and accommodate either Quadtrac-style tracks or the industry's largest-available row crop tires. The Case IH powertrain harnesses all that impressive power and puts it to the ground in a way no other tractor can match.

PROVEN ENGINES READY TO PERFORM.

Since 2006, the largest Steiger tractors have been powered by the Case IH 12.9-liter engines built by FPT Industrial. This proven engine that powers Steiger tractors through the toughest field conditions is now Tier 4 B/Final compliant, thanks to fuel-saving, easy-to-maintain Case IH SCR-only emissions system. Early tests show the exclusive Case IH technology provides a 5-12 percent fluid operating cost advantage (diesel fuel and Diesel Exhaust Fluid, or DEF) over competitive Tier 4 B hybrid engines.

DUAL COOLING PACKAGES PROVIDE EFFICIENT POWER.

The Steiger 540, 580 and 620 models feature a low-pressure, cooling circuit system that provides increased power along with fuel efficiency. The two-stage turbocharger system includes a small turbocharger that delivers low-RPM responsiveness and a second, larger one for maximum boost at high RPMs. Each turbocharger has its own cooling system to provide 30 percent faster response under load. Front fold down coolers are designed for easy cleaning.





AXLES BUILT FOR COVERING MORE ACRES.

Steiger tractors feature massive axles that can carry up to 66,000 pounds of gross vehicle-operating weight. That's the most weight any tractor out there can handle. And it means your Steiger tractor can work with the largest implements available and cover more acres in a day. Rowtrac and Quadtrac configurations employ an immense, flange-type axle that generates the torque needed for unbeatable traction capabilities.



A DEPENDABLE TRANSMISSION THAT DOES MORE FOR YOU THAN JUST SHIFT GEARS.

The 16-speed, full-powershift Steiger transmission produces smooth shifting and reduces fatigue at the end of a long day in the field. Pulse-width modulation allows the smoothest possible shifts under load. The Case IH Diesel Saver™ Automatic Productivity Management (APM) system also helps the tractor make easier, more positive shifts by maintaining constant clutch pressure, while also saving fuel. For example, you can plant at a constant 6 MPH, save up to 24 percent on fuel, and still achieve the desired plant population. The Case IH transmission also features larger, helical-cut gears and clutch packs that deliver years of service while transmitting up to 682 peak hp to the ground for large-scale farming.

NOT JUST EPA COMPLIANT. ON-FARM COMPLIANT.

Case IH high-horsepower diesel engines are the result of the collaboration of the engineers of Case IH and sister company FPT Industrial. FPT Industrial holds eight separate patents for the ground-breaking work they've done to advance SCR-only emissions control technology in high-horsepower applications. Today there are 53,000+ Case IH SCR-only engines with more than 25 million operating hours at work on North American farms. These updated Tier 4 B/Final emissions compliant engines—featuring common rail fuel systems and an exclusive Case IH SCR-only emissions system—offer power, performance and fuel economy with no active exhaust cleaning required. They also deliver more low-end torque to allow the engine to lug down and recover more quickly.





MAXIMIZING PRODUCTIVITY UNDER HEAVY ENGINE LOADS.

The 370-hp Steiger row crop tractor is powered by the Case IH 8.7-liter engine—the same engine found in Magnum™ tractors and Axial-Flow® combines since 2006. The design melds superior power, optimum fuel efficiency and ease of service to perform in the toughest farming conditions under heavy engine loads.



THE HEART OF THE MOST POWERFUL TRACTOR IN THE INDUSTRY.

Used in every Steiger tractor from the 420-hp row crop version to the industry-leading 620-hp model, the proven Case IH 12.9-liter design was first used in Case IH Axial-Flow combines in 2006 and later incorporated in Steiger tractors. The Steiger 420, 470 and 500 feature a single-stage turbocharger with a common rail fuel system to properly match the engine with horsepower and efficiency requirements. The Steiger 540, 580 and 620 models feature a two-stage turbocharger system: a small turbocharger delivers low-RPM responsiveness and a second, larger one for maximum boost at high RPMs. An industry-exclusive factory-installed engine-braking option is available on all 12.9-liter engine models to save wear and tear on your brake pads and provide additional control when hauling heavy loads like slurry tanks, scraper pans or the largest implements on hilly roads.



CARED FOR BY CASE IH EXPERTS FROM CONCEPT TO CALIBRATION.

The engines in Steiger tractors are built by Case IH sister company FPT Industrial, who has manufactured more than 400,000+ SCR engines since 2006. And we engineer, design and test them at our Burr Ridge, Illinois, facility. That's the same place where our high-horsepower tractors are engineered, ensuring we maintain an exceptional standard of durability and reliability. The close alliance between Case IH and FPT also means that Case IH service technicians are expertly trained to maintain your engine—at your local Case IH dealership.

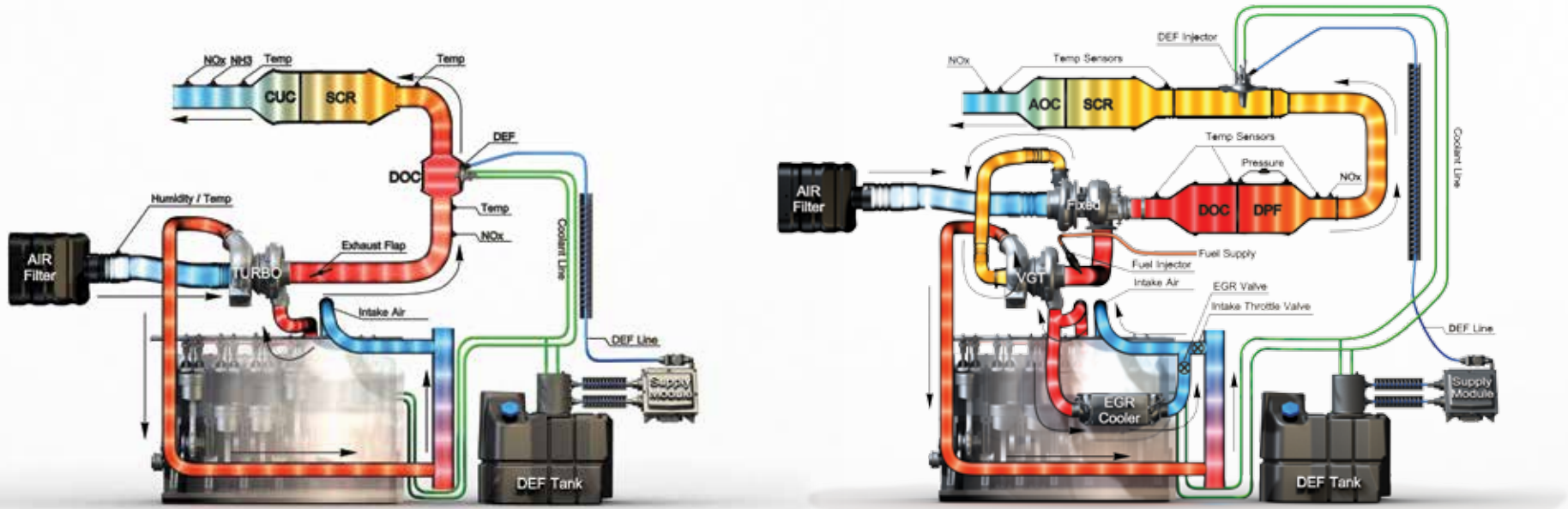
IN THE FINAL STRETCH: CASE IH STILL SETS THE STANDARD.

Since the first phase of Tier 4 emissions regulations went into effect, Case IH has been committed to an SCR (Selective Catalytic Reduction)-based solution. Case IH chose the SCR-only emissions system because it works outside engines and allows them to run at their best, without modification or compromise. Because it helps save diesel fuel and increase power. Because it means engines that last longer with less routine maintenance. Because Case IH went with the technology that was right from the start. Tried, true and tested in all applications.



CASE IH TIER 4 B/FINAL SOLUTION EXCLUSIVE AND PATENTED.

If an SCR-only solution works so well, why doesn't every manufacturer offer it? The simple answer is they can't. The technology that lets Case IH achieve Tier 4 B/Final standards without adding EGR and DPF components is proprietary and patented. The Tier 4 B/Final SCR system is fundamentally similar to the system used for Tier 4A, with only a few new components added to meet the final Tier 4 B mandate. The new components provide the following enhancements: improved system monitoring, better NOx conversion and better control of exhaust temperatures in cold applications. The Case IH FPT edge is an exclusive one. It is the right solution, right from the start.



System component size varies from one machine application to another. Component sizes shown here are approximate and not to scale.

SCR-ONLY SOLUTION: CLEAN & SIMPLE.

The Case IH Selective Catalytic Reduction (SCR) solution is a true exhaust after-treatment system, with all of the emissions components located on the exhaust.

- Single SCR-only solution does it all with class-leading power that does not compromise efficiency.
- Treats exhaust outside the engine, without added complexity.
- No active regeneration or particulate filters required, and no operational changes from Tier 4A to Tier 4 B/Final.
- Service requirements and engine exposure to soot and carbon minimized (Easy to service with industry-leading 600 hour oil change).
- Exclusive, patented SCR-only Tier 4 B/Final design delivers 95% NOx conversion efficiency vs. competitive systems that provide only 80–85% efficiency.
- Designed to optimize fuel efficiency.
- 53,000+ Case IH SCR-only engines, over 25 million operating hours in North America.

HYBRID SOLUTION: CLUTTERED & COMPLEX.

If it looks a little cramped and cluttered under the hood of a tractor with a hybrid EGR / Diesel Particulate Filter (DPF) / SCR emissions system, that's because it is.

- Operating a hybrid system means compromised performance and more complexity (and heat) than ideal
- Added engine parts throttle back power and performance
- Active regeneration and particulate filter required
- EGR valve means higher operating temperatures and fuel costs
- More parts, more service, more maintenance expense

A CROP OF TRACTORS GROWN FOR TODAY'S AGRONOMIC CHALLENGES.

There are a lot of things farmers can't control: the weather, prices, regulation, population growth. But we understand successful operations need to be ready to make the best of whatever comes your way. You need the flexibility to operate in a variety of conditions, to make the most of short operating windows. That idea helped inspire our innovative Steiger designs for more than 57 years—to help you better control your seeds' growing environment. Based on input from our field team and producers like you, our engineers have continued to advance the Steiger tractor line to be more fuel and work efficient, more comfortable and more capable of optimizing challenging conditions.





GET IN THE FIELD SOONER.

The best way to maximize yields and maximize profits is to get both your seeds and other inputs in the ground at precisely the right time. Steiger tractors are designed to take advantage of those brief windows when the conditions for preparing, planting or other applications are perfect. Here, a Steiger 540 Quadtrac with a 930 Nutri-Placer provide fertilizer to the deep, moist root zone band of this field.



CREATE A BETTER GROWING ENVIRONMENT.

Case IH exclusive Quadtrac technology and new, larger row crop tire offerings help minimize soil compaction and provide a better soil environment for every valuable seed you plant. Unlike two-track designs, Steiger Quadtrac and Rowtrac configurations eliminate pinch rows and berming in turns. A Steiger 370 Rowtrac tractor with a 1255 Early Riser planter is shown here. With multiple track widths and row-spacing options, the exclusive Rowtrac 4-track design provides a balanced and continuous footprint for maximum traction with minimum compaction, preserving a better soil environment.



PREPARE A PROPER SEED BED

In the spring, a Steiger 620 HD wheeled tractor with a Tiger-Mate 200 field cultivator provide the most aggressive residue-sizing and mixing option on the market. This warms the soil for quicker dry-down which allows for earlier planting, improves soil tilth for better seed-to-soil contact and allows faster germination and uniform crop emergence. The Steiger 620 rated horsepower (682 peak HP) handles the industry's largest implements.



MANAGE AND MIX RESIDUE.

A Steiger 620 wheeled tractor with an Ecolo-Tiger® 870 disk ripper fractures root-limiting compaction, sizes residue for rapid nutrient cycling, mixes crop residue to limit erosion and levels soil to provide uniform seedbed conditions for increased production capacity. Steiger wheeled HD tractors have a longer wheelbase combined with Case IH exclusive high flotation tires, providing more traction with less compaction, even under load.



CUT AND MIX TOUGH ROOTS

This Steiger 620 HD wheeled tractor with True-Tandem® 330 Turbo vertical tillage slices up to 3–4 inches deep to cut tough root crowns, remove surface soil crusts and weeds, mix the residue and level the soil—in fall or spring. The exclusive Case IH vertical tillage design and Steiger high-horsepower let you run at faster speeds for more productivity.



OUR BEST EXPERTS, YOUR BEST PRACTICES.

The Case IH product development team doesn't just consult with experts or read about agronomic issues—our team is made up of experts with decades of field experience. They have spent years in their own fields and yours understanding what it takes to be a successful producer. And by using that level of knowledge and agronomic principles through every phase of design, we create better equipment.

THE UPDATED STEIGER FAMILY: BIGGER, MORE ADAPTABLE AND READY FOR ANYTHING.

Cereal grain and oilseed growers, row crop farmers and contractors alike will find a fit for their operations in the power and versatility of the Steiger family of tractors. For 57 years, Steiger has been the leader in 4WD industry innovation. From handling large-scale planters and tillage tools, to moving tons of earth and moving nimbly between emerging crop rows, Steiger series tractors offer a combination of power, performance, flexibility and operator comfort that is unequalled.





ACCOMPLISHED PERFORMANCE IN THE MOST DEMANDING SCRAPER WORK.

Steiger tractors built their reputation in agriculture, but they've also established themselves as workhorses on construction job sites pulling scrapers, moving earth at the lowest possible cost per yard. The 470, 500, 540, 580 and 620 Steiger models are all available in scraper configurations.



HORSEPOWER AND HYDRAULICS FOR THE MOST DEMANDING SMALL-GRAIN IMPLEMENTS.

The wide frame of 500, 540, 580 and 620 HD wheeled models – along with the equivalent Quadtrac configurations—set new productivity benchmarks for the industry. As do the heavy-duty drivetrain components, 113-gallon-per-minute hydraulic flow and power growth up to 682 peak hp. The aggressive stance of these high-horsepower models can handle the world's biggest and most productive high horsepower implements.



READY FOR ANY KIND OF ROW CROP WORK, IN ANY CONDITIONS.

The Steiger 370, 420 and 470 HD wheeled models have a 36.5 inch frame width and 148 inch wheelbase, ideal for putting power to the ground in row crop applications. The specialized frame allows wheel-tread settings to straddle a variety of typical row crop spacings, such as 20-, 22- or 30-inch rows. The row crop frame accommodates a 480/95R50 R1 W 86 inch tall tire—an industry exclusive that gives your more square inches of tire on the ground for a better ride, better traction and less compaction. And the new Rowtrac 370, 420, 470 and 500 models give you all the benefits of the Quadtrac technology with a row crop-friendly footprint.

| Model | 370 | 420 | 470 | 500 | 540 | 580 | 620 |
|-------------------|-----------------|-----------------|-----------------|-----------------|-----------------|-----------------|-----------------|
| Rated Max PTO | 370 405 311 | 420 462 355 | 470 517 405 | 500 550 435 | 535 605 473 | 580 638 473 | 620 682 473 |
| Row Crop Frame | ✓ | ✓ | ✓ | | | | |
| High HP Frame | | | | ✓ | ✓ | ✓ | ✓ |
| Wheeled HD | ✓ | ✓ | ✓ | ✓ | ✓ | ✓ | ✓ |
| Rowtrac Ag | ✓ | ✓ | ✓ | ✓ | | | |
| Quadtrac Ag | | | ✓ | ✓ | ✓ | ✓ | ✓ |
| Wheeled Scraper | | | ✓ | ✓ | ✓ | ✓ | ✓ |
| Quadtrac Scraper | | | | ✓ | ✓ | ✓ | |

BIG TRACTORS FOR THE BIGGEST ON-FARM JOBS.

All Steiger tractors feature massive, heavy-duty axles that can carry up to 66,000 pounds of operating weight. That's the most weight any tractor out there can handle. Whether you're moving silage, moving snow or pulling the largest implements available, there is a Steiger configuration built for the job.



STEIGER QUADTRAC AND ROWTRAC: PROOF POSITIVE FOUR TRACKS ARE GREATER THAN TWO.

The Case IH Steiger Quadtrac features four individually driven, positive drive, oscillating tracks. Each track puts five axles on the ground so it can bend and flex gracefully, maintaining constant contact with the ground for a great ride, optimal ground pressure, superior flotation and better traction. That ground contact, even in the toughest terrain, isn't just fancy engineering—it's real performance for tough conditions and maximum productivity. And, the undercarriage is maintenance-free with on-the-go track self-tensioning and clear bearing caps for easily checking fluid levels.





THE MOST POWERFUL TRACTORS AVAILABLE ARE ALSO EASY TO STEER.

The articulated steering of Steiger Quadtrac and Rowtrac tractors operates like a typical 4WD wheeled tractor. All four tracks remain on the ground, with equal torque transferred during turning. It maneuvers under load with no loss of traction, unlike two-track systems that disrupt power transfer during turning. Plus, Quadtrac steering remains easy and positive under all conditions.



UNMATCHED EFFECTIVENESS WITH FOUR INDEPENDENT TRACKS.

The four individually driven, oscillating tracks of a Steiger Quadtrac create more ground contact area for better flotation and traction, helping minimize compaction and improving soil tilth. Full power is provided to each track during turns, allowing Steiger Quadtrac and Rowtrac models to turn tightly without causing berming and pull hard with minimal soil disturbance, all to maintain soil health and improve seed bed conditions. The proven Quadtrac and Rowtrac designs deliver a clear advantage over all competitive track systems.



POSITIVE-DRIVE SYSTEM DELIVERS MORE DURABILITY AND RELIABILITY.

Exclusive Quadtrac positive-drive design delivers more usable power you can depend on. The Quadtrac lugs interlock with bars on the drive wheel, eliminating slippage between the drive wheel and track. That's because a positive drive delivers continuous power at all times, even in a wet or slippery spot. And unlike friction drives in competitive two-track systems, the Steiger Quadtrac and Rowtrac positive drive adjusts automatically under transport or light loads. That reduces wear, friction and heat—and increases durability.



MAINTENANCE-FREE UNDERCARRIAGE.

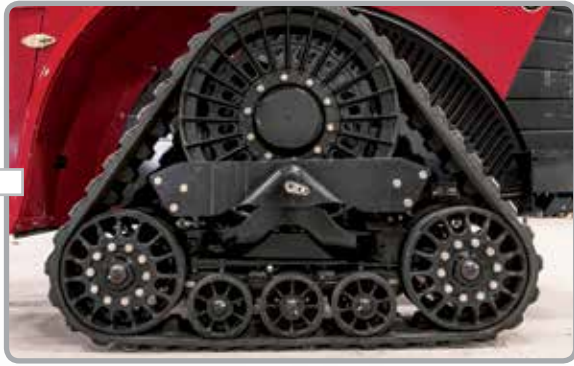
In the past, daily undercarriage maintenance on “crawler” tractors could consume large amounts of time and money, minimizing any productivity advantage producers might see. Today's Case IH Steiger Quadtrac tractors have an undercarriage that is completely maintenance-free with self-adjusting track tension and clear-cap sight gauges to help producers monitor fluid levels.

| Model | Quadtrac | Rowtrac | Track Width (cm) | Axle Widths (cm) |
|-------|----------|---------|---|---|
| 370 | | ✓ | 16, 18, 24, 30 in. (40.64, 45.72, 60.96, 76.2) | Rowtrac (std/opt): 80/88, 120 in. (203.2/223.52, 304.8) |
| 420 | | ✓ | 16, 18, 24, 30 in. (40.64, 45.72, 60.96, 76.2) | Rowtrac (std/opt): 80/88, 120 in. (203.2/223.52, 304.8) |
| 470 | ✓ | ✓ | 16, 18, 24, 30 in. (40.64, 45.72, 60.96, 76.2) | Rowtrac (std/opt): 80/88, 120 in. (203.2/223.52, 304.8) Quadtrac (std): 90 in. (228.6) |
| 500 | ✓ | ✓ | 16, 18, 24, 30 in. (40.64, 45.72, 60.96, 76.2) | Rowtrac (std/opt): 80/88, 120 in. (203.2/223.52, 304.8) Quadtrac (std): 90 in. (228.6) |
| 540 | ✓ | | 30, 36 in. (76.2, 91.44) | Quadtrac (std): 90 in. (228.6) |
| 580 | ✓ | | 30, 36 in. (76.2, 91.44) | Quadtrac (std): 90 in. (228.6) |
| 620 | ✓ | | 30, 36 in. (76.2, 91.44) | Quadtrac (std): 90 in. (228.6) |

STEIGER ROWTRAC: QUADTRAC TECHNOLOGY NOW FOR ROW CROP APPLICATIONS.

Get through fields quickly and easily without disturbing your crops with all the power and performance you need for your operation with the new Case IH Steiger Rowtrac tractors. The proven technology of Quadtrac tractors is now available in innovative new row crop configurations. Steiger Rowtrac tractors provide more options and greater flexibility for row crop producers, put more power to the ground with less compaction, and are among the highest horsepower tracked machines available for row crop applications. Whether you are farming in 20-, 22-, 30- or 40-inch rows, Case IH now has row crop track widths and axle configurations to match your needs.





UNIQUE SUSPENSION DESIGNED FOR ROW CROPS.

Though the Steiger Rowtrac undercarriage is similar to that of the legendary Quadtrac tractor, the design is actually quite unique. The exclusive Case IH Rowtrac design fits in a very narrow undercarriage width. On each end of the roller beam, a mount controls pitch, roll and yaw, along with some vertical load. Two mounts in the center handle the primary vertical load. The Rowtrac also features a vertical suspension system that uses rubber “donuts” that act like shock absorbers. They keep the suspension from shifting side to side and help keep the tracks on the row.



LONGER WHEELBASE = MORE GROUND CONTACT = MORE FLOTATION.

Case IH extended the wheelbase from 148 to 160 inches so each track has more ground contact, resulting in better transfer of power to the ground. In addition, the Rowtrac design delivers less ground pressure, reduced compaction and the most comfortable ride in the industry.



MOVE FROM FIELD TO FIELD WITH EASE.

The Steiger Rowtrac provides increased traction in a narrow footprint to perform well in a variety of applications, including seed bed preparation, planting, side dressing, fertilizing and primary tillage. At the same time, you are able to maintain a narrow transport width for faster travel to the next field location, which shortens travel time and increases efficiency.



| Row crop Spacing | Rowtrac Operating Width (cm) | Rowtrac Track Widths (cm) |
|------------------|------------------------------|--|
| 20-inch rows | Standard 80 in. (203.2) | 16 in. (40.64) |
| 22-inch rows | 88 in. (223.52) | 16, 18 in. (40.64, 45.72) |
| 30-inch rows | 120 in. (304.8) | 16, 18, 24 in. (40.64, 45.72, 60.96) |
| 40-inch rows | Standard 80 in. (203.2) | 16, 18, 24, 30 in. (40.64, 45.72, 60.96, 76.2) |

MAXIMUM UPTIME IS ALWAYS ON OUR MIND. BECAUSE IT'S ALWAYS ON YOURS.

Planting and harvesting seasons don't wait for downtime. To get maximum yields, you need to stay up and running. Steiger tractors are designed to keep you there. From the frame construction to the heavy-duty powertrain. And Case IH dealers are certified to maintain every component of your tractor, including the engines. When you buy a Steiger tractor, we want you to use it. Not wait for it to be usable.





A HEAVY-DUTY FRAME FOR THE MOST DEMANDING WORK.

Steiger tractors have always featured a frame built of ½-inch-thick steel and a longer wheelbase with built-in weight for better traction. High-horsepower jobs put tremendously demanding forces on a tractor. Steiger tractors perform so well they're used worldwide in construction applications because they're the toughest tractors around. That's durability you can use for the demanding jobs on your farm. Steiger tractors are designed for optimal weight distribution and can be adapted to meet your specific needs and application. Let your dealer assist with proper weight distribution to save you money through improved fuel economy. And see for yourself at caseih.com/Tools/Pages/Calculators, Weighting and Ballasting.



QUICK AND EASY DAILY MAINTENANCE.

- All transmission, hydraulic/axle and engine fluids are serviced at ground level.
- Due to the SCR-only emissions system, engine oil change intervals are extended to 600 hours.
- A right-hand service door and ladder make it easy to service components in and on the cab, clean cab glass and communicate with someone outside the right side of the tractor. The right-hand service door also provides access to the electrical cut-off switch used during tractor storage.



THE PROOF IS IN THE FINISH.

Steiger tractors are the first in the industry to use Class 6 automotive-grade paint. (Others use Class 3 paint.) That means a Steiger tractor will hold up to the varying harsh conditions that pound it day after day, from spring to fall. And stronger resistance to fading means better resale value for you.

A FUEL TANK THAT LASTS AS LONG AS THE TRACTOR.

Stopping for fuel before finishing the day's work wastes valuable time. The Steiger tractor fuel tanks have the capacity to hold up to 470 gallons. That's enough fuel for 15 hours of non-stop work. The steel tanks are build right into the frame, adding extra strength and durability to the entire chassis industry-exclusive design.



FLEET FRIENDLY FLUID OPTIONS.

Thanks to new fluid formations from Case IH, Case IH equipment owners need only stock three key fluids for their fleets. For example, Case IH Hy-Tran Ultraction can be used in the transmission and hydraulic system of every Case IH machine, including those with CVT transmissions.

Similarly, the new Case IH No. 1 15w40 and synthetic SSL 10w40 engine oils now carry the CJ-4 rating, so that single oil can be stocked as the sole diesel engine oil for mixed fleets, regardless of their emissions equipment. In fact, CJ-4 engine oils can be used in all diesel vehicles on the farm including pickups and heavy-duty trucks.

New Actifull OT coolant is formulated to provide full protection in Case IH Tier 4B engines to resist deposit buildup and other issues that can occur in extreme temperature and pressure conditions.

THERE'S MORE THAN JUST OUR TRACTORS WORKING IN YOUR FIELDS.

Case IH has more professionals in the field than anyone else. Our dealers have the experience to help you manage your equipment to maximize yields and your bottom line. Parts and service technicians have the expertise to assist you before, during and after the sale. And CNH Industrial Capital will work with you to customize financing solutions to identify what works best for your needs and your farm. It's an integrated equipment, service and financing system in one package. All of it focused on your operation and its unique needs.



KNOWLEDGEABLE DEALERS THAT WORK WITH YOU.

Your Case IH dealer understands you need to optimize the return on your investment. That means fitting the right Steiger horsepower and capabilities with the tools and implements that best fit your farm. Your dealer can recommend the appropriate options package, with proper tires, weighting and ballasting packages for optimum performance. And he or she will analyze results with you, field by field.



MAXIMUM SERVICE TO GET MAXIMUM UPTIME, SEASON AFTER SEASON.

Case IH offers Max Service, the first owner's support network in the industry. And it comes with no extra cost to you. Max Service delivers manufacturer-direct assistance to you and your Case IH dealer. If you need service, parts or just have a question, Case IH staff will quickly respond to your unique situation. Your Case IH dealer already has a full-line of parts and components, full-service maintenance programs and industry-leading warranties. Max Service gives you even more resources to boost productivity with your Case IH equipment. And minimize downtime. Your complete satisfaction is our goal. Your dealer and Max Service are here for you whenever you need help at 1-877-4CASEIH.

MAX SERVICE 1-877-422-7344
100% Availability. 100% Support.

FINANCING AND EQUIPMENT PROTECTION TAILORED TO CASE IH EQUIPMENT AND YOU.

CNH Industrial Capital is your financial connection every step of the way, and each day we help producers like you get into the right Case IH equipment to support the unique agricultural needs of your business. Specialized finance programs and flexible leasing packages put you in the driver's seat of industry-leading Case IH equipment while staying within your budget. After your purchase, keep your equipment up and running with the CNH Industrial Capital Commercial Revolving Account for your Case IH parts & service needs, and insure your equipment with our no-nonsense warranties and comprehensive protection plans. As the only finance company dedicated to Case IH, we offer the products and services designed to help you Be Ready.

CNH CAPITAL
INDUSTRIAL

TESTIMONIALS FROM OUR STEIGER TIER 4 CUSTOMERS

"So far the Tier 4 engines have been very good on fuel. We have noticed in a big way that the fuel economy was better than what we were expecting,"—Scott Shaw, Marlette, MI

"The Tier 4A technology has been easy on the fuel. We are now able to pull our 12-inch space drill -- 70 feet of air drill width — while only using 10.5 gallons of fuel per hour," ... "We are getting more productivity out of the same gallon of fuel therefore our costs per acre are going down."—Chase Stoner, Havre, MT

"We don't have to change the oil as often and when we do the oil is still as clean as when it went in," ... "It is a well-built tractor," he concludes.—Gill Guschette, Wimbledon, ND

"This series of tractors can do any job, just like the other tractors, except the Steigers do it more efficiently, with less fuel. It is a win-win situation for farmers,"—Chris Hansen, Bliss, NY

| SPECIFICATIONS | 370 Wheeled/Rowtrac | 420 Wheeled/Rowtrac | 470 Wheeled/Rowtrac/Quadtrac |
|--|---|---|--|
| ENGINE | | | |
| Engine Type | Tier 4 B/Final with Selective Catalytic Reduction (SCR)-only emissions system | | |
| Engine HP at Rated RPM per SAE | 370 @ 2000 RPM | 420 @ 2100 RPM | 470 @ 2100 RPM |
| Maximum Engine HP | 405 | 462 | 517 |
| PTO HP @ Rated Engine Speed | 311 | 355 | 405 |
| Cylinders/Valves/Displacement | 6 cyl./24/8.7 L (531 cu. In.) | 6 cyl./24/12.9 L (787 cu. In.) | |
| Engine Aspiration | Electrical variable geometry turbocharger with air-to-air aftercooling | Wastegate turbocharger with air-to-air aftercooling | |
| Factory-installed Engine Brake | NA | Optional | |
| ELECTRICAL | | | |
| Alternator/Battery/Electrical Cutoff Switch | 12V 200 amp/two 1,000 cranking amps/YES | | |
| TRANSMISSION/PTO | | | |
| Transmission | Standard full powershift 16F/2R w/16 Hi (25 mph/40 kph) | | |
| PTO-Optional | 1,000 rpm-1¾ in. shaft | | |
| AXLES | | | |
| Rear Axle Diameter | 5 in. (127 mm) Planetary | | |
| Axle Width-Wheeled/Quadtrac | 120 in. (3 048 mm)/90.3 in. (2 294 mm) | | |
| Wheelbase | 148 in. (3 759 mm)/160 (4 064 mm) | 148 in. (3 759 mm)/160 (4 064 mm)/154 in. (3 912 mm) | |
| Differential Lock Standard | Differential lock standard | | |
| HYDRAULICS | | | |
| Remote Valves-Standard/Optional | 4/up to 8 | | |
| Standard Hydraulic Pump (PFC) | 40 gpm (151 L/min.) | 42 gpm (159 L/min.) | |
| Optional High Flow Hydraulic Pump (PFC) | 55 gpm (208 L/min.) | 57 gpm (57 L/min.) | |
| Total Tractor Hydraulic Flow w/ Parallel/Twin Flow Pumps | 108 gpm (409 L/min.) | 113 gpm (428 L/min.) | |
| Available Flow at Single Remote Valve | 35 gpm (132 L/min.) | | |
| Drawbar Std/Opt | Std 5,300 lbs./Opt. 6,000 lbs., 11,000 lbs. | | |
| 3-point Hitch Category | Cat IV-N (convertible to Cat III) | Rowtrac: Cat IV-N (convertible to Cat III)/Wheeled and Quadtrac: Cat IV-N | |
| Hitch Lift Capacity | 20,000 lbs. (9 071 kg) | 20,000 lbs. (9 071 kg)/20,000 lbs. (9 071 kg)/19,728 lbs. (8 949 kg) | |
| CAPACITIES | | | |
| Fuel Tank | 220 gal. (829 L)/250 gal. (946 L) | 310 gal. (1 170 L)/250 gal. (946 L) | 310 gal. (1 170 L)/250 gal. (946 L)/310 gal. (1 170 L) |
| Diesel Exhaust Fluid (DEF) Tank | 42 gal. (174 L) | | 42 gal. (174 L)/42 gal. (174 L)/85 (322 L) |
| Vertical Tongue | up to 11,000 lbs (4 989.5 kg) | | |
| Frame Width | 36.5 in. (927 mm) | 36.5 in. (927 mm)/36.5 in. (927 mm)/44 in. (1 118 mm) | |
| CAB | | | |
| Volume (Size) | 132 cu. ft. (3.7 cu. m) | | |
| Glass | 88.1 sq. ft. (8.18 sq. m) | | |
| WEIGHTS | | | |
| HD Wheel Models - Base Shipping Weight | 38,759 (17 581 kg) std./38,909 (17 649 kg) HD | 40,159 (18 216 kg) | |
| HD Wheel Models - Max. Gross Vehicle Weight | 42,000 (19 051 kg) Std./49,500 (22 453 kg) HD | 49,500 lbs. (22 453 kg) | |
| Rowtrac Models - Base Shipping Weight | 42,260 (19 169 kg) | 43,510 (19 736 kg) | |
| Rowtrac Models - Max. Gross Vehicle Weight | 56,850 (25 787 kg) | 57,050 (25 877 kg) | |
| Quadtrac Models - Base Shipping Weight | | | 46,500 (21 092 kg) |
| Quadtrac Models - Max. Gross Vehicle Weight | | | 60,000 (27 216 kg) |

| SPECIFICATIONS | 500 Wheeled/Rowtrac/Quadtrac | 540 Wheeled/Quadtrac | 580 Wheeled/Quadtrac | 620 Wheeled/Quadtrac |
|--|---|--|---|----------------------|
| ENGINE | | | | |
| Engine Type | Tier 4 B/Final with Selective Catalytic Reduction (SCR)-only emissions system | | | |
| Engine HP at Rated RPM (2,100 RPM) per SAE | 500 @ 2100 RPM | 535 @ 2100 RPM | 580 @ 2100 RPM | 620 @ 2100 RPM |
| Maximum Engine HP | 550 | 605 | 638 | 682 |
| PTO HP @ Rated Engine Speed | 435 | | 473 | |
| Cylinders/Valves/Displacement | 6 cyl./24/12.9 L (787 cu. in.) | | | |
| Engine Aspiration | Wastegate turbocharger with air-to-air aftercooling | Two-stage turbocharging with air-to-water intercooling and air-to-water aftercooling | | |
| Factory-installed Engine Brake | Optional | | | |
| ELECTRICAL | | | | |
| Alternator/Battery/Electrical Cutoff Switch | 12V 200 amp/two 1,000 cranking amps/YES | 12V 200 amp/two 12V 240 amp/NA | | |
| TRANSMISSION/PTO | | | | |
| Transmission | Standard full powershift 16F/2R w/16 Hi (25 mph/40 kph) | | | |
| PTO—Optional | 1,000 rpm—1¾ in. shaft | | | |
| AXLES | | | | |
| Rear Axle Diameter | 4.5 in. (114 mm) compound planetary/flanged | | 5.5 in. (140 mm) compound planetary/flanged | |
| Axle Width—Wheeled/Quadtrac | 120 in. (3 048 mm)/90.3 in. (2 294 mm) | | | |
| Wheelbase | 154 in. (3 912 mm)/160 (4 064 mm)/154 in. (3 912 mm) | 154 in. (3 912 mm) | | |
| Differential Lock Standard | Differential lock standard | | | |
| HYDRAULICS | | | | |
| Remote Valves—Standard / Optional | 4/up to 8 | | | |
| Standard Hydraulic Pump (PFC) | 42 gpm (159 L/min.) | | | |
| Optional High Flow Hydraulic Pump (PFC) | 57 gpm (57 L/min.) | | | |
| Total Tractor Hydraulic Flow w/ Parallel/Twin Flow Pumps | 113 gpm (428 L/min.) | | | |
| Available Flow at Single Remote Valve | 35 gpm (132 L/min.) | | | |
| Drawbar Std/Opt | Std 5,300 lbs./Opt. 6,000 lbs., 11,000 lbs. | | Std 11,000 lbs./opt. 15,000 lbs. | |
| 3-point Hitch Category | Rowtrac: Cat IV-N (convertible to Cat III)/ wheeled and Quadtrac: Cat IV-N | Cat IV-N | | |
| Hitch Lift Capacity | 19,620 lbs. (8 900 kg)/20,000 (9 071 kg)/19,728 (8 949 kg) | 19,620 lbs. (8 900 kg)/19,728 lbs. (8 949 kg) | | |
| CAPACITIES | | | | |
| Fuel Tank | 310 gal. (1 170 L)/250 gal. (946 L)/310 gal. (1 170 L) | 310 gal. (1 170 L) | 455 gal. (1 722 L)/470 gal. (1 779 L) | |
| Diesel Exhaust Fluid (DEF) Tank | 66 gal. (250 L)/42 gal. (174 L)/85 gal. (322 L) | 66 gal. (250 L) | | 85 gal. (322 L) |
| Vertical Tongue | up to 15,000 lbs. (6 804 kg) | | | |
| Frame Width | 44 in. (1 118 mm)/36.5 in. (927 mm)/44 in. (1 118 mm) | 44 in. (1 118 mm) | | |
| CAB | | | | |
| Volume (Size) | 132 cu. ft. (3.7 cu. m) | | | |
| Glass | 88.1 sq. ft. (8.18 sq. m) | | | |
| WEIGHTS | | | | |
| HD Wheel Models - Base Shipping Weight | 43,855 (19 892 kg) | | 48,147 (21 839 kg) | |
| HD Wheel Models - Max. Gross Vehicle Weight | 56,000 lbs. (25 401 kg) | | 66,000 lbs. (29 937 kg) | |
| Rowtrac Models - Base Shipping Weight | 43,510 (19 736 kg) | | | |
| Rowtrac Models - Max. Gross Vehicle Weight | 57,050 (25 877 kg) | | | |
| Quadtrac Models - Base Shipping Weight | 46,500 (21 092 kg) | 47,780 (21 673 kg) | 48,780 (22 126 kg) | |
| Quadtrac Models - Max. Gross Vehicle Weight | 60,000 (27 216 kg) | | 64,000 (29 030 kg) | |



SAFETY NEVER HURTS!™ Always read the Operator's Manual before operating any equipment. Inspect equipment before using it, and be sure it is operating properly. Follow the product safety signs, and use any safety features provided. CNH Industrial America LLC reserves the right to make improvements in design and changes in specifications at any time without notice and without incurring any obligation to install them on units previously sold. Specifications, descriptions and illustrative material herein are as accurate as known at time of publication, but are subject to change without notice. Availability of some models and equipment builds varies according to the country in which the equipment is used.

©2014 CNH Industrial America LLC. All rights reserved. Case IH is a trademark registered in the United States and many other countries, owned by or licensed to CNH Industrial N.V., its subsidiaries or affiliates.
Printed in U.S.A. www.caseih.com

Form #CIH12121301