



---

Make a clean  
sweep of it.

---

## A Lifetime of Experience.

We've been moving crops around for more than 160 years. So to say that Massey Ferguson® knows a little something about rakes would be a dramatic understatement. Fact is, the Wood's Self-Rake Reaper was introduced by Massey-Harris — one of two Massey Ferguson forerunners — as far back as 1861. However, even company founder H. A. Massey would have never dreamed of the broad selection of rakes and tedders available in the current Massey Ferguson line-up.

Like us, you work hard to ensure a top-quality product. It doesn't matter whether it's a few bales for your own livestock or 1,000 bales for the commercial market, you're the type of producer who strives for quality. So, why risk forage value once the crop is on the ground, when there's a Massey Ferguson machine designed specifically for your crop management needs?

With 12 different wheel rake models, four tedder models and 3 rotary rakes within its arsenal, Massey Ferguson offers a tool that is right for your needs. So sit back, relax and let us help you find the model that's just right for your operation.

I am the frontier. And the dust bowl. And abundant waves of grain.

I am six generations of farmers, looking forward to sunrise.

And six generations, working into the night.

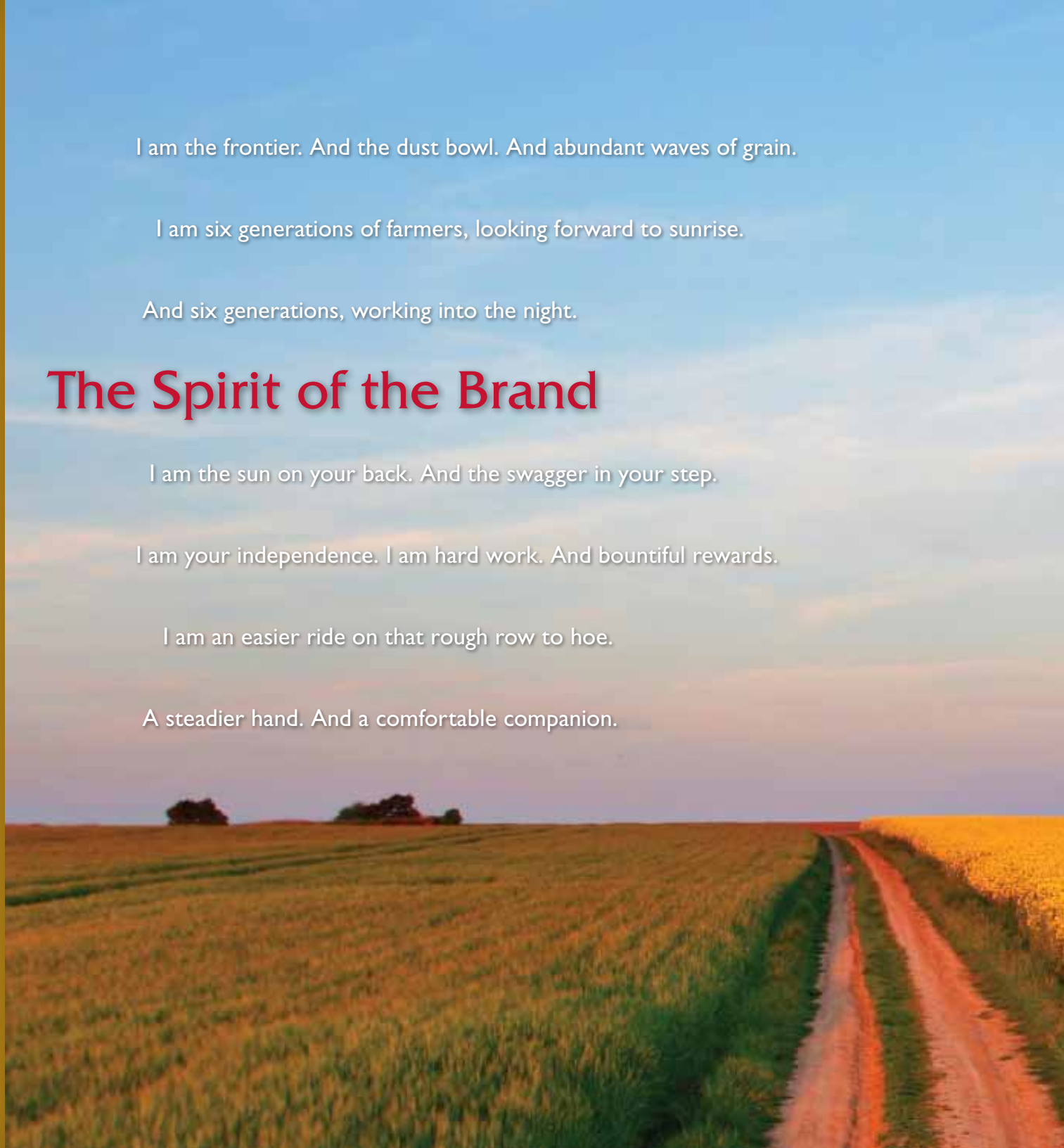
## The Spirit of the Brand

I am the sun on your back. And the swagger in your step.

I am your independence. I am hard work. And bountiful rewards.

I am an easier ride on that rough row to hoe.

A steadier hand. And a comfortable companion.



I am resolute. Resourceful. Inventive. And honest.

I understand your dreams. And your realities.

I am the next chore. The next crop. The next harvest. The next opportunity.

I am your tractor. Your tool. Your edge.

I am your strong right hand.

**I am Massey Ferguson.**

The heart of the farm. And the joy in the work.



Once a pioneer,  
always a pioneer.

More than 160 years ago, Daniel Massey started it all. He was a family man, working man, businessman, inventor, tradesman, manager, entrepreneur and genius. In other words, he was a farmer.

Since that time, we've continued to grow — in fact there are more Massey Ferguson machines on the job world-wide than any other brand — but we've never lost our focus. With each new product, each new innovation, our one and only motivation is to provide what farmers need. And what farmers want.

Today more than ever, we're determined to prove that the heart of the original Massey Ferguson brand still beats under the shiny red paint on every model we build.

*"Beauty in engineering is that which is simple, has no superfluous parts and which answers exactly its purpose."*

—Harry Ferguson



1847  
MASSEY MFG. COMPANY



It was 1847 when Daniel Massey began what would become Massey Ferguson — the same year Thomas Edison, Joseph Pulitzer and Jesse James were born.

1861

Daniel Massey's son, Hart, obtains the rights to manufacture the Walter A. Wood reaper and mower.

1875

Massey purchases patents to make the Sharps Rake for Ontario, Quebec and Manitoba.

1926



Henry Ford and Harry Ferguson entered into partnership in 1938 and Massey Harris introduced the first commercially available self-propelled combine.

1938

In 1926, Harry Ferguson patented the 3-point hitch. In various forms, it is still used on virtually all of our competitors' tractors today.

Nobody knows hay like  
**HESSTON**

Now part of the Massey Ferguson family, the Hesston Manufacturing Company was founded in 1947.

1947



The Hesston Model 100 was introduced, making it the industry's first commercially available self-propelled windrower.

1955

Massey Ferguson became the world's best-selling tractor brand in 1962.



1962



Massey Ferguson and Hesston joined forces to produce the new Hesston by Massey Ferguson complete line of hay equipment.

2006

2010

Massey Ferguson joins forces with FELLA and Laverda S.p.A, to expand and diversify the hay and forage product line.



TABLE OF OPPORTUNITIES

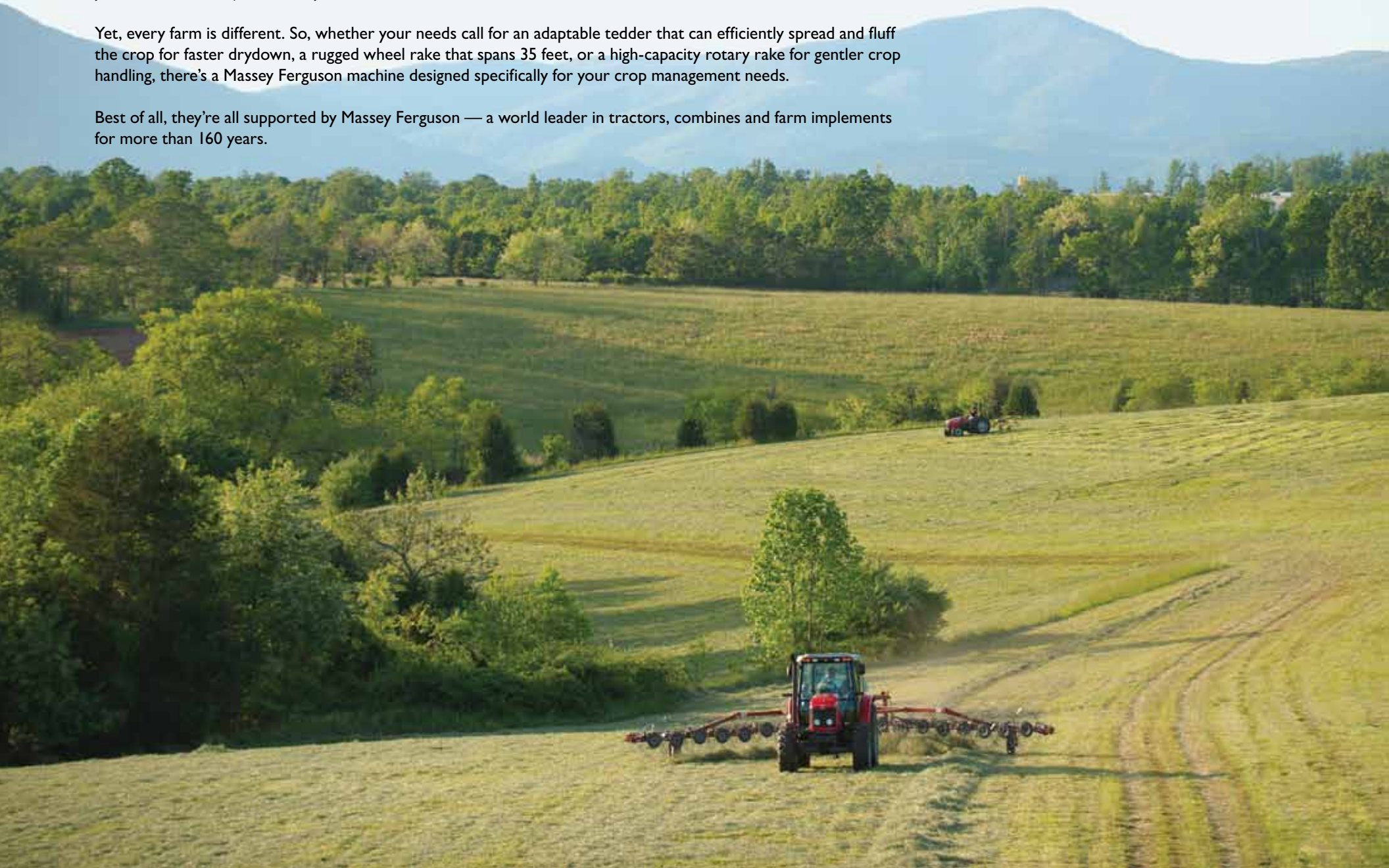
Introduction	p. 6
Rotary Rakes	p. 8
Tedders	p. 10
Vertical Fold Wheel Rake	p. 12
Super V + Y Rakes	p. 14
Standard Wheel Rakes	p. 16
High-Capacity and Heavy-Duty Wheel Rakes	p. 18
Service and Support	p. 20
Specifications	p. 22








## Changing with the times.

We don't have to tell you how hay and forage harvesting has changed in the past few decades, altering both the value and function of rakes and tedders along the way. Today, you need equipment that will help you take control of your harvest... not just rake hay into a windrow.

Yet, every farm is different. So, whether your needs call for an adaptable tedder that can efficiently spread and fluff the crop for faster drydown, a rugged wheel rake that spans 35 feet, or a high-capacity rotary rake for gentler crop handling, there's a Massey Ferguson machine designed specifically for your crop management needs.

Best of all, they're all supported by Massey Ferguson — a world leader in tractors, combines and farm implements for more than 160 years.



CATEGORY	MODEL	MAX. WORKING WIDTH FT. (M)	REQUIRED POWER HP (KW)	THE PERFECT FIT	
<b>Rotary Rake</b>	RK3824 RK3855 RK3879	13.5 - 27.5 (4.1 - 8.1)	41 - 48 (31 - 36)	The <b>RK Series</b> Rotary Rakes' high-capacity design sweeps hay or forage into a tidy windrow without gathering dirt, debris or unwanted material. The sweeping action maximizes leaf retention for higher quality hay.	
<b>Tedder</b>	TDI620T TDI635 TDI648 TDI658	8.2 - 25.3 (2.5 - 7.7)	20 - 41 (15 - 31)	Massey Ferguson <b>TD Series</b> Tedders offer the strength for commercial-grade operation in sizes up to 25.3 feet to handle big acreage. Durability features include induction-hardened rotor heads that are lubricated with grease, not oil, to prevent leakage and extend life.	
<b>Vertical Fold Wheel Rake</b>	1508 1510 1512	16 - 24 (4.1 - 7.3)	25 - 30 (19 - 22)	Our <b>1500 Series</b> Vertical Fold Wheel Rakes feature the ideal blend of strength, simplicity and versatility, which makes them a great general-purpose rake on any farm.	
<b>Super V + Y Rake</b>	SV410 SV440	22.0 - 34.5 (6.7 - 11.5)	40 - 60 (30 - 45)	The <b>SV Series</b> Super V + Y rakes offer a wide variety of configurations to meet any raking need. Both the standard-duty SV410 and the heavy-duty SV440 can be equipped with extra front rake wheels and/or a 3-wheel rear extension for turning the entire windrow.	
<b>Bi-Fold Wheel Rake</b>	3972 3982 3991	12.5 - 31.5 (3.8 - 9.6)	25 - 40 (19 - 30)	Massey Ferguson <b>3900 Series</b> Bi-Fold Wheel Rakes are designed for clean raking, as each wheel floats independently. The wheel rakes leave large, fluffy, square-shouldered windrows that are ideal for both round and square baling.	
<b>High-Capacity Wheel Rake</b>	3983 3986 3995	0 - 35 (0 - 9.6)	30 - 65 (22 - 49)	Massey Ferguson <b>3900 Series</b> High-Capacity Wheel Rakes feature an overhead frame and inboard rake wheels to eliminate restrictions and ensure free crop flow in high-volume crops.	
<b>Heavy-Duty Wheel Rake</b>	5130	0 - 30.3 (0 - 9.2)	65 (49)	The <b>5130</b> Heavy-Duty Wheel Rake provides the strength and features that commercial operations demand, like in-cab control, a heavy-duty frame and rake beams, and rake wheels with rubber-mounted teeth and solid wheel panels that can handle heavy or damp crops.	

See complete specifications on page 22.

## High-quality swaths, even in heavy forage.

### Massey Ferguson RK Series Rotary Rakes

It used to be that if you needed high-capacity and wide raking widths, your only option was a wheel rake. Yet, rotary rakes have deservedly earned their reputation for well-formed, less-roped windrows that allow maximum air circulation and fast crop drying.

However, with the introduction of the Massey Ferguson RK Series rotary rakes, you can “have your cake and eat it too”. Available in three models with crop-gathering widths up to 27.5 feet, RK Series rotary rakes feature gentle crop handling and the capacity that operators of big balers and self-propelled forage harvesters demand for harvester efficiency.

By gently sweeping the crop, rather than rolling it to the center as a wheel rake does, RK Series rotary rakes maximize leaf retention and crop quality while building fluffier, faster-drying windrows. The sweeping action also reduces the potential for rocks, dirt and debris in the windrow for a cleaner raking job.

Twelve cam-action tine arms per rotor and a heavy-duty vinyl curtain provide easy adjustment of raking action and windrow width so you can build a high quality windrow in every situation. The model RK3855 even offers the choice of center and right side delivery (two swaths) or right side only (single swath).





## Superior suspension makes the difference.

The role of any good rake is to make a clean sweep of the field, no matter how rough or rolling the terrain. Fortunately, Massey Ferguson RK Series rakes were designed to follow contours better than any other rake on the market.

One secret is our patented RotorFlex™ suspension system that allows the staggered rotors on the RK3855 and RK3879 models to move freely over the ground, no matter the contour. While the overhead frame and rear chassis wheels provide support and suspension, each individual rotor rides on its own six-wheel chassis to independently glide over bumps, hills and hollows without scratching, gouging or jumping over crop material. A sliding-bearing rear mount and ball-and-socket front mount provide each rotor with unmatched ground-following flexibility.



The RotorFlex suspension features “jet effect” lifting and lowering, which means the front lifts first and lowers last, to keep tines from diving into the ground.

Even the trailed, single-rotor RK3824 features offset tandem wheels that not only provide flotation, but oscillate over bumps and ditches.

- An adjustable control cam provides optimum formation of swaths for follow-up balers or harvesters — without the use of tools.
- Strong single-stage bevel gears and divided pinion shafts with three bearings each ensure a long service life.
- The hydraulic lift system means rotors don’t need to be switched off at the end of the field.
- The heavy-duty frame and steering rear axle coupled with the flexing rotor heads, which are part of the RotorFlex suspension system, provide unmatched strength and flexibility.



Long tines feature smooth front surfaces for long life and smooth crop release, creating a clean, uniform windrow.



A fully enclosed gearbox on each rotor prevents contamination from dust, dirt and debris for maximum reliability. The helical-cut gears and sealed cam track are also permanently lubricated with grease, rather than oil, to prevent leakage and increase service life.

## Where machine and nature come together.

### Massey Ferguson TD Series Tedders

When it comes to drying hay, it's nearly impossible to beat Mother Nature. Of course, farmers have utilized nature's resources — like the wind and sun — for as long as seeds have been planted in the ground. Today, you can accelerate Mother Nature's gifts by spreading the crop with a professional-grade Massey Ferguson TD Series tedder.

Four models provide tedding widths from 8 feet 2 inches to a full 25 feet. Each model offers easily adjusted spreading angles of 15, 18 and 20.5 degrees for adaptability to all forage and crop conditions. The TD Series even offers a choice of two 25-foot models, including the TDI648, which incorporates its own transport chassis that allows the rotors to fold forward and rest on rubber dampers for high-speed transport between fields.

All models are simple to set-up and adjust for quick and efficient ground coverage. Four- and six-rotor models also feature synchronized lifting of exterior rotors via a centralized hydraulic lift system and pressure cylinders to ensure optimum performance and eliminate one-sided loads — even on slopes.

### Commercial-grade features

Massey Ferguson TD Series tedders feature commercial-grade construction that starts with induction-hardened, break-resistant rotor heads for increased durability. The heavy-duty, fully-sealed transmission cases also use grease, rather than oil, to ensure quiet operation and longer service intervals. You'll find the same industry leading philosophy in a myriad of other features that come as standard equipment.

- Cutout clutches that protect the U-joints and provide automatic power disconnection when lifting the tedder at headlands, saving you time at every turn.
- A rugged, square-tube frame that features modular construction for long service life.
- Galvanized tine supports with super "C" spring tines and built-in tine savers ensure durability and reliable performance.
- Close coupling between the rotor support wheels and the tines provides quick response to contours and optimal height adjustment.
- A 1:2 transmission ratio for maximum performance at minimum PTO speeds.





## An affordable solution for occasional needs.

### Massey Ferguson 1500 Series Vertical Fold Wheel Rakes

Today's mower conditioners and self-propelled windrowers that cut, condition and windrow the crop in one operation certainly make life easier under average conditions. But who can count on average?

Available in three sizes, 1500 Series Vertical Fold Rakes are ideal for the producer who occasionally needs a rake for pulling two windrows together, turning damp windrows or windrowing hay that has been mowed, tilled or laid down in swaths. Choose between the 8-wheel model 1508 with raking widths up to 20 feet; the 10-wheel model 1510, with a maximum raking width of 22 feet, or the 12-wheel model 1512 with raking widths to 24 feet.

Each model features three different raking widths within its range, as well as windrow adjustment that varies from 48 to 72 inches in 6-inch increments. One single-acting cylinder folds both wings for easy transport. Additionally, all three models are designed so the left-hand wing can be locked, allowing only the right side of the rake to lower for single-side raking or for turning windrows.





### Where toughness and economy intersect.

Although the 1500 Series vertical fold rakes offer a low-cost alternative to the 3900 Series wheel rakes, they still feature sturdy construction to stand up to the rigors of field contours, while supporting rake wheels at a pre-set level.

- A rugged box-beam frame ensures stability on rough terrain and a long service life.
- The 1500 Series rakes feature the same 55-inch diameter rake wheels used on the 3900 Series models for a easy replacement and efficient handling of heavy crop material.
- Rake wheels are mounted in pairs on pivoting brackets, allowing them to oscillate over field contours and pick up material that others miss.
- An adjustable drawbar clevis allows you to level the rake wheel beams to match the tractor drawbar height.
- Select one of three raking widths on each model, then fine-tune your choice by simply adjusting the turnbuckle located on each wing.



Adjustable float springs on each rake arm allow the operator to select just the right amount of down pressure for the crop and field conditions.



One single-acting cylinder folds both wings for easy transport.

## The jack-of-all-trades rakes.

### Massey Ferguson SV Series V + Y Rakes

A Massey Ferguson SV410 or SV440 (heavy-duty) Super V + Y Rake can be nearly anything you need it to be. Equipped with the standard 10 or 14 rake wheels respectively, the SV410 and SV440 function as a rugged overhead-frame conventional wheel rake. Add another rake wheel to the front of each wing to cover an even wider raking width.

Or, add the three-wheel rear extension kit to transform your vertical fold V-rake into a Y-rake for turning the crop across the full rake width. All models easily fold from the tractor cab for narrow transport — as little as 10 feet, 4 inches on the SV410.

### Choose your own model and configuration

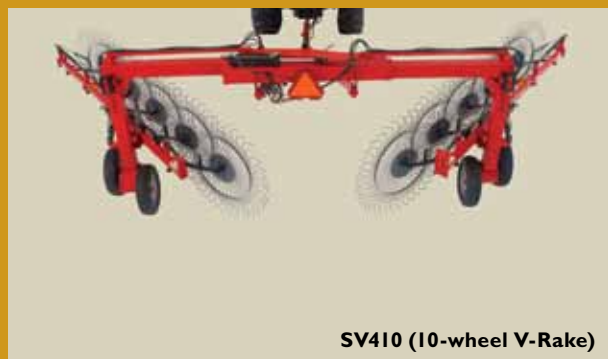
	Configuration	Required Kit(s)	Raking Width
Model SV410	10-Wheel V	None (Base unit)	Up to 22 ft.
	12-Wheel V	2-wheel front extension (1 wheel per wing)	Up to 25 ft.
	13-Wheel Y	3-wheel rear Y extension	Up to 22 ft.
	15-Wheel Y	2-wheel front extension + 3-wheel rear Y extension	Up to 25 ft.
Model SV440	14-Wheel V	None (Base unit)	Up to 31 ft.
	16-Wheel V	2-wheel front extension (1 wheel per wing)	Up to 34 ft. 6 in.
	17-Wheel Y	3-wheel rear Y extension	Up to 31 ft.
	19-Wheel Y	2-wheel front extension + 3-wheel rear Y extension	Up to 34 ft. 6 in.

### Built to handle the job

The high-tongue, overhead frame and outboard wheels ensure that the area in front of the rake wheels is always free of restrictions that can affect crop movement. Because the rake beams are suspended from the frame, there's no need for gauge wheels that can drop into a ditch or bounce off the ground, lifting the rake wheels in the process.

From front to rear, you'll witness consistent suspension, positive ground contact and smooth crop flow.

- **Large-diameter rake wheels** handle the heaviest of forage crops, while the 40 steel tines per wheel keep the crop moving without “windmilling”, putting more crop in the windrow.
- **Single or dual cylinders** (depending on the model) adjust raking width to match your harvest equipment.
- **Heavy-duty rake wheel hubs** feature sealed ball bearings for maximum durability and life span.
- **Each rake wheel has its own spring**, so it floats independently for cleaner raking.
- **Adjustable down-pressure springs** allow the operator to fine-tune the rake to crop and field conditions — extending the life of rake tines and decreasing the chance of dirt and debris being deposited in the windrow.
- **Tandem-axle walking beams** equipped with large flotation tires allow the rake to closely follow ground contours so you get every stem without adding compaction.





Rake frame width and beam angle adjustment are infinitely adjustable within limits, allowing the operator to effectively match raking width to crop volume and raking conditions, all without leaving the tractor seat.

You'll understand why it's our most popular series.

### Massey Ferguson 3900 Series Wheel Rakes

Big acreage calls for a rake that can cover a lot of ground quickly. If that describes your operation, you'll want to take a closer look at the 3900 Series Bi-Fold wheel rakes. These 8-, 12-, 16- and 18-wheel models feature working widths up to 35 feet for maximum efficiency with small rectangular balers and big round balers alike. Massey Ferguson also gives you a selection of hydraulic-fold standard and high-capacity models to match your needs and budget.

### Follow Every Field Contour

You won't find a wheel rake that hugs the ground any tighter than a Massey Ferguson 3900 Series model. That's because each wheel is spring-loaded and mounted on its own pivoting arm so it floats independently. All wheels are on the ground at the same time, so they pick up the hay other rakes can leave behind.

With 40 teeth per wheel, Massey Ferguson wheel rakes put the teeth to the ground. Plus, the large wheel diameter — 55 inches — helps keep hay from windmilling around the rake wheel. It's just one of the reasons you'll see cleaner fields with Massey Ferguson rakes, even at higher ground speeds.

---

**Stronger teeth mean fewer replacements and a longer life.**

---







### Standard hydraulic fold 8-, 12- and 16-wheel models

There's a lot more to the models 3972, 3982 and 3991 than the convenience of hydraulic-fold wings. You also get a wide choice of windrow widths. While most rakes provide only three or four settings from which to choose, the 3900 Series hydraulic-fold models give you an infinite number of options between the minimum and maximum settings on each model. Simply turn the ratchet-type turnbuckle to obtain the exact width you desire. Spread it out to fit the throat of a round baler or build a high, narrow windrow that dries quickly, yet fills the pickup on a small rectangular baler. The choice is yours!

Equipped with eight wheels, the model 3972 lets you preset raking widths to six different spans, ranging from 12.5 to 17 feet. While the 12-wheel model 3982 provides six different raking widths from 18 and 24 feet. For even more capacity, take a look at the model 3991, with 16 wheels and raking widths that range from 24.5 feet to 31.5 feet.



**One single-acting hydraulic cylinder lifts each side of the rake for easy transport and maintenance.**

## Heavy demands call for increased capacity.

### Massey Ferguson 3900 Series High-Capacity Wheel Rakes

You get a lot more than a heavy-duty frame and inboard rake wheels on the Massey Ferguson 3900 Series High-Capacity rake models. You also gain the benefit of infinitely variable raking widths within the minimum and maximum range on each of three models, along with a wide choice of windrow widths that are easily adjusted with a single crank arm.

Maximum raking width on the 12-wheel model 3983 is 24 feet, while full raking width on the 14-wheel model 3986 is 28 feet. And for the ultimate in capacity, there's the 18-wheel model 3995 with a maximum operating width of 35 feet and a windrow width of up to 61 inches. There's even an optional kit to convert the model 3986 to a 16-wheel rake as your operation grows. Still, all three models fold to as little as eight feet for transport on country roads and through narrow gates.

Because rake wheels are mounted on the inboard side of the folding frame, there are no restrictions to a continuous flow of high volume hay. There's nothing to keep the windrow from making a clean exit, either, thanks to the overhead frame at the rear.



**Folded for transport, the model 3995 measures only 8 feet, 5 inches in width, while the 3986 and 3983 fold even narrower — all without ever leaving the tractor seat.**



**An optional center kicker wheel is available on all 3900 Series wheel rakes, as well as all 1500 Series rakes to turn the entire windrow and eliminate any wet spots beneath unraked crop.**



It's your business,  
so rake it all in.

### Massey Ferguson 5130 Heavy-Duty Wheel Rake

There's a reason we call the Massey Ferguson model 5130 a heavy-duty rake. One look at the rugged frame and sturdy rake wheels and you'll know this machine was designed for the commercial operators who need to satisfy the appetite of big balers and self-propelled forage harvesters. What's more, every function of the 5130 Heavy-Duty rake is controlled via a bank of electro-hydraulic valves operated by a cab-mounted control box.

Equipped with 17 rake wheels on offset rake beams, the 5130 offers raking widths that are infinitely adjustable from 0 to 30.3 feet. Windrow widths are also infinitely adjustable up to 72 inches.

When it comes time for road transport, the 5130 folds to a width of only 12 feet, 3 inches, making it easier to move from field to field and through narrow gates.



The control box provides the operator with complete control of the rake and windrow, including the ability to individually extend or retract each side of the rake frame and/or tilt the rake beams up to 10 degrees. Rake wings can also be opened or closed individually; the right and left side rake wheels can be raised or lowered individually, or the rake wheels can be raised and lowered together using a single master switch.



If there's any doubt left about the strength and versatility of the Massey Ferguson 5130, check out these features that put it in a class of its own.

- Walking beam rear axles and tandem wheels ensure more stability over rough ground and limited oscillation.
- The large 60-inch diameter rake wheels are each equipped with 36 rubber-mounted rake teeth for a cleaner job of raking.
- Wheel hubs are cast iron, for longer life than steel plate. Plus, the wheels hubs, which incorporate an anti-wrap guard, rotate on tapered roller bearing packed in grease.
- Each rake wheel has its own torsional dampening spring, so it floats independently. Plus, the amount of ground pressure on the rake wheels is adjustable.
- Poly wind panels are standard on all rake wheels to help prevent the crop from blowing after the rake wheels lift it off the ground.
- Transport lights and an SMV sign, along with one work light for raking at night, are provided as standard equipment.

## Invest wisely.

When you invest your hard-earned dollars in a piece of farm equipment, you expect it to do the job it was designed to do; and you expect it to last. Massey Ferguson has built a worldwide following by building machines that do both.

No matter which Massey Ferguson rake or tedder you choose, you can count on solid construction that comes with features like box-beam frames, helical cut gears, permanent grease and induction-hardened housings. Equally important, Massey Ferguson rakes

and tedders are designed to make a clean sweep of your fields, whether that means pulling the crop together or spreading it out. Like you, we realize that every lost stem represents a financial loss, whether you're feeding your own hay or selling it. Even pennies per pass can add up to dollars per field.

It's little wonder wise farmers have come to rely on Massey Ferguson — the brand that has served farmers for more than 160 years.

### **LOW-RATE, FLEXIBLE FINANCING**

Your Massey Ferguson Dealer and AGCO Finance offer attractive financing programs, with extremely competitive rates and terms, to make sure a new Massey Ferguson rake or tedder will fit your operating budget.



## A great deal includes a great dealer.

If you're like most farmers, when you find an excellent piece of equipment, it becomes almost like part of your family. And when you buy a Massey Ferguson® rake or tedder, you instantly become part of ours. Our network of dealers knows what it takes to put up quality hay and they have the knowledge to match the right rake or tedder with the right producer. They'll advise and support you through the selection process, the buying process, through operation, maintenance and beyond. Because our dealers share your passion for farming, they're happy to share their knowledge to keep you working happily. After all, you're family. And there's nothing we wouldn't do for family.

### All-inclusive warranty

Even our warranty is high performance. The one-year/unlimited hour, all-inclusive warranty on parts and labor is one of the best in the business. More importantly, it's backed by dealers who understand how to help you make the most of it.

### AGCO parts

Genuine Massey Ferguson replacement parts are manufactured to the same high standards of quality and dependability as the original part used on the assembly line. Using original equipment parts will help keep your Massey Ferguson rake or tedder running like new.



At Massey Ferguson, you're family. And there's nothing we wouldn't do for family.

Questions? Go to [masseyferguson.com](http://masseyferguson.com)

Our website opens the door to all sorts of technical information and product specifications. If you can't find what you're looking for, click on "contact us" and we'll provide you with access to folks who can get you all the answers.



### Build & Quote

Easily configure, price and compare equipment using our "Build my Massey Ferguson" tool. You can sort through available product options and design machines to fit your unique needs. Visit [masseyferguson.com/buildmymassey](http://masseyferguson.com/buildmymassey)



The doors are open at [ShopMassey.com](http://ShopMassey.com)

You'll find all sorts of ways to live Massey Ferguson from the latest in wearables to gifts for the entire family. And some good old-fashioned bargains, too.



The Massey Ferguson *Farm Life* magazine is our exclusive publication that offers farming news, interviews and insights – for and by farmers like you. Visit us online at [myfarmlife.com](http://myfarmlife.com)

### AGCO Answers

At AGCO, customer care isn't just a department — it's a commitment. Contact us with your questions. We'll do our best to answer them promptly, or put you in touch with someone who can. (877) 525-4384 [agcoanswers@agcocorp.com](mailto:agcoanswers@agcocorp.com)

Join our conversation.

 **Engage.**  
[facebook.com/AGCOcorp](https://facebook.com/AGCOcorp)

 **Follow.**  
[twitter.com/AGCOcorp](https://twitter.com/AGCOcorp)

 **Watch.**  
[youtube.com/AGCOcorp](https://youtube.com/AGCOcorp)

 **Learn.**  
[blog.AGCOcorp.com](https://blog.AGCOcorp.com)

 **Read.**  
[scribd.com/AGCOsocial](https://scribd.com/AGCOsocial)

 **Chat.**  
[ustream.tv/channel/AGCOchat](https://ustream.tv/channel/AGCOchat)

## RK Series specifications

MODEL	RK3824	RK3855	RK3879
<b>Dimensions and Weights</b>			
Length transport: ft. (m)	11.4 (3.5)	24.4 (7.4)	17.5 (5.3)
Width transport: ft. (m)	6 (1.8)		9.8 (3)
Weight: lbs. (kg)	1,190 (540)	4,629 (2,100)	4,199 (1,905)
Windrow widths: in. (mm)	28 to 61 (700 to 1,550)	24 to 75 (600 to 1,900)	47 to 83 (1,200 to 2,100)
Working widths: ft. (m)	13.5 (4.1)	25.2 to 27.5 (7.7 to 8.4)	24.8 to 26.5 (7.5 to 8.1)
Mainframe type	Drawbar		2-point
PTO driveline		1 3/8 – 6 spline with torque limiter	
Windrow deflector curtain		Three positions	
Tandem axle		Optional	
Tires	4 x 18 / 8.5-8		16 / 6.5-8
<b>Rotor</b>			
Overall diameter: in. (mm)		140 (3,556)	
Number of toothbars	12	12 & 12	12
Number of double tines per toothbar	4	4 and 5	4
Number of double tines	48	48 and 60	48
Tooth control		Cam follower bearings in sealed case	
Rotor speed: rpm		67.5	
Rotor case oil (liquid grease)		SAE 250	
Quantity: qt. (L)		6.5 (2.9)	
<b>Tractor Requirements</b>			
Horsepower: HP (kW)		41 (31)	48 (36)
PTO		540	
Hydraulics	One single-acting remote valve	One single-acting remote valve with float valve	
Standard Equipment		Parking stand, transport safety chain and SMV emblem	

## TD Series specifications

MODEL	TDI620T	TDI635	TDI648	TDI658
<b>Dimensions and Weights</b>				
Working width: ft. (m)	8.2 (2.5)	16.2 (5.0)	25.3 (7.7)	25.3 (7.7)
Transport width: ft. (m)	9.8 (3.0)	9.7 (2.9)	9.8 (3)	9.1 (2.8)
Length: ft. (m)	10.3 (3.1)	10.4 (3.2)	14.7 (4.5)	18.3 (5.6)
Weight: lbs. (kg)	513 (233)	1,224 (555)	2,727 (1,237)	1,742 (790)
<b>Mainframe</b>				
Transport chassis	NA	NA	Standard	NA
Rotors	2	4		6
Double tines per rotor			6	
Wheels	2	4		6
Rotor tire size			16-6:50 x 8	
<b>General</b>				
Tractor attachment			Drawbar	
Minimum horsepower: HP (kW)	20 (14.9)	30 (22.4)		41 (30.6)
PTO speed: rpm			540	

## SV Series specifications

MODEL	SV410	SV440
<b>Dimensions and Weights</b>		
Length: ft. (m)	19.8 to 31.5 (6 to 9.6)	26.4 to 37.6 (8 to 11.5)
Width transport: ft. (m)	11.2 (3.4)	12.4 (3.8)
Weight: lbs. (kg)	2,290 to 3,023 (1,039 to 1,371)	4,140 to 4,800 (1,878 to 2,177)
Raking width: ft. (m)	22 or 25 (6.7 or 7.6)	31 or 34.5 (9.5 or 10.5)
Windrow width: ft. (m)	Up to 46 (14)	Up to 94 (26.7)
<b>Mainframe</b>		
Tire sizes	ST175/80D13	6.70 x 154
Rake wheel hubs	Taper roller bearings	Sealed ball bearings
Number of raking wheels	10, 12, 13, 15	14, 16, 17, 19
Overall diameter: in. (mm)	55 (1,397)	60 (1,524)
Number of teeth per wheel		40
Hydraulic frame width adjustment		Standard
Hydraulic beam angle		Standard
<b>Tractor Requirements</b>		
Horsepower: HP (kW)	40 (30)	60 (44.7)
Hydraulics	One double-acting and one single-acting remote	

## 1500 Series specifications

WHEEL RAKES		VERTICAL FOLD MODELS		
MODEL	1508	1510	1512	
<b>Dimensions and Weights</b>				
Transport width: ft. (m)	8.5 (2.6)	9.6 (2.9)	10.6 (3.2)	
Overall length: ft. (m)	13 (4.0)	15.6 (4.8)	18 (5.5)	
Weight: lbs. (kg)	1,125 (510)	1,275 (578)	1,440 (653)	
Raking widths: ft. (m)	3 positions from 16 to 20 (4.1 to 6.1)	3 positions from 18 to 22 (5.5 to 6.7)	3 positions from 20 to 24 (6.1 to 7.3)	
Windrow widths: in. (mm)	Variable from 48 to 72 (1,219 to 1,829)			
<b>Mainframe</b>				
Raking positions	3			
Frame fold	Hydraulic			
Tire size	ST175/80D13			
Gauge wheels: in. (mm)	12 (305)	15 (381)	6:70 X 15	
<b>Finger Wheels</b>				
Number	8	10	12	
Overall diameter: in. (mm)	55 (1,397)			
Tines per wheel	40			
Tine diameter: in (mm)	0.3 (7)			
Rake wheel bearings	Tapered roller bearings with dust covers			
Flotation	Dual-wheel flotation			
Lift	Single cylinder – both sides			
<b>Tractor Requirements</b>				
Minimum horsepower: HP (kW)	25 (19)	25 (19)	30 (22)	
Hydraulics	One single-acting remote valve (hydraulic fold)			
<b>Optional Kits</b>				
Optional accessory kits are available. Please contact your local Massey Ferguson dealer.				



## 3900 Series and 5000 Series specifications

WHEEL RAKES		BI-FOLD MODELS			HIGH-CAPACITY MODELS			HEAVY-DUTY MODEL
MODEL	3972	3982	3991	3983	3986	3995	5130	
<b>Dimensions and Weights</b>								
Transport width: ft. (m)	9.2 (2.8)	9.7 (3)	9.8 (3)	8 (2.4)	8.1 (2.5)	8.5 (2.6)	12.3 (3.7)	
Overall length: ft. (m)	17.2 (5.2)	22 (6.7)	26.6 (8.1)	24.6 (7.5)	27.3 (8.4)	34 (10.4)	28.3 (8.6)	
Weight: lbs. (kg)	1,670 (757)	2,100 (953)	3,065 (1,390)	3,500 (1,587)	3,800 (1,723)	5,000 (2,268)	5,800 (2,631)	
Raking widths: ft. (m)	12.5 to 17.2 (3.8 to 5.2)	18 to 24 (5.5 to 7.3)	24.5 to 31.5 (7.5 to 9.6)	0 to 24 (0 to 7.3)	0 to 28 (0 to 8.5)	25 to 35 (7.5 to 9.6)	Up to 30.3 (9.2)	
Windrow widths: in. (mm)	Variable from 33 to 60 (838 to 1,524)	Variable from 33 to 60 (838 to 1,524)	Variable from 40 to 68 (1,016 to 1,727)	Variable from 38 to 58 (965 to 1,473)	Variable from 38 to 58 (965 to 1,473)	Variable from 38 to 61 (965 to 1,549)	Up to 72 (1.8)	
<b>Mainframe</b>								
Raking positions	3	6	6	Infinitely variable			Infinitely variable	
Frame fold	Hydraulic			Hydraulic			Hydraulic	
Tire sizes: in. (mm)	15 (381)	15 (381)	15 (381)	P205-75 X 15	P205-75 X 15	6:70 X 15	9.5L x 15	
Gauge wheels: in. (mm)	12 (305)	12 (305)	15 (381)	12 (305)	15 (381)	6:70 X 15	NA	
<b>Finger Wheels</b>								
Number	8	12	16	12	14	18	17	
Overall diameter: in. (mm)	55 (1,397)			55 (1,397)			60 (1,524)	
Tines per wheel: in. (mm)	40			40			36	
Tine diameter	0.3 (7)			0.3 (7)			NA	
Rake wheel bearings	Tapered roller			Tapered roller			Tapered roller	
Flotation	Wheels pivot independently			Wheels pivot independently			One spring per wheel	
Lift	Single-acting cylinder per side			Single-acting cylinder per side			Double-acting lift cylinder per side	
<b>Tractor Requirements</b>								
Minimum horsepower: HP (kW)	25 (19)	30 (22)	40 (30)	30 (22)	40 (30)	65 (48.5)	65 (48.5)	
Hydraulics	One double-acting remote and one single-acting remote			One double-acting remote and one single-acting remote			One double-acting remote and one single-acting remote	
<b>Optional Kits</b>								
Optional accessory kits are available. Please contact your local Massey Ferguson dealer.								



## Always the innovator.

Hay and forage products have always been important to Massey Ferguson and its predecessors. After all, horses and mules were still the source of power back in 1847 when Daniel Massey established our company's roots. And four-footed horsepower needed fuel.

All the while, we've been there with quality hay and forage products and innovative machines... like the 1916 Massey-Harris "No. 3 Side Rake and Tedder", designed to save the producer time, storage space and the cost of one machine. Today, we're closing the gap with machines like our new RK Series Rotary Rakes. No wonder the "Massey" name has survived for over 160 years.



Welcome  
to the family.



MASSEY FERGUSON



**Rakes & Tedders**  
[masseyferguson.com](http://masseyferguson.com)



**AGCO ANSWERS**

(877) 525-4384 [agcoanswers@agcocorp.com](mailto:agcoanswers@agcocorp.com)



*Play It Safe. Work Safely.*

©2011 AGCO Corporation. All rights reserved. This document and all of its contents are owned exclusively by AGCO and are protected by copyright law. AGCO has a corporate policy of continuous product improvement and development; therefore, specifications are subject to change without any advance notice. AGCO is not responsible for differences between the specifications or illustrations contained in this publication and the actual equipment. Equipment produced by other manufacturers is shown in photographs in this brochure for the purpose of illustration only and is not intended as an endorsement of that particular equipment or its suitability. AGCO, 4205 River Green Parkway, Duluth, GA 30096.



**MASSEY FERGUSON** and **HESSTON** are registered trademarks of AGCO.  
 (877) 525-4384 • MF11B001CT (5) 10 P

AGCO, Your Agriculture Company, is a premier manufacturer of agricultural equipment, providing high-tech solutions for professional farmers feeding the world. The company is dedicated to delivering superior customer service, innovation and quality. AGCO products are distributed in more than 140 countries worldwide.



**We proudly support:**

