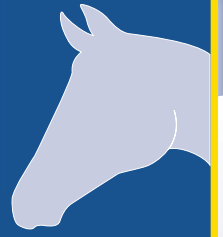




MAR-WELD

DIAMOND HORSE STALLS



Equine Product Guide



CF-24FG

Corner feeder ideal for feeding hay and forage to horses and other smaller livestock. Manufactured with high strength UV protected plastic for maximum strength, durability and longevity.



CF-32B

Easily mounts in a corner and comes with 2 inserts (not shown) and mounting hardware. Each insert weighs 3 pounds and makes a partition for dividing the feeder into as many as 3 partitions.



WFD-FG

The Corner / Wall feeder mounts to a corner or wall for grain and supplements.

Diamond Horse Stall Fronts

Standard Stall Fronts come in 10' or 12' Sections
Powder Coated Finish in Different Colours Available



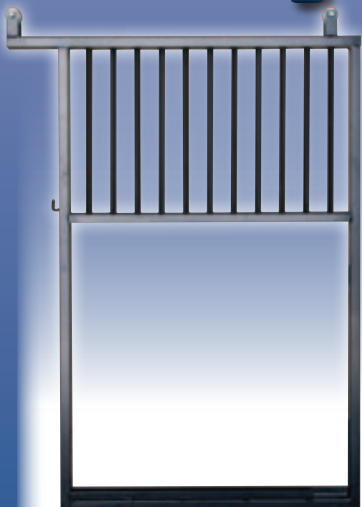
▲ Standard Hitch and Aluminum Trolleys with Sealed Bearings

◀ 10' Stall shown with Optional Feed Door and Drop Down Door inside Roll Door.

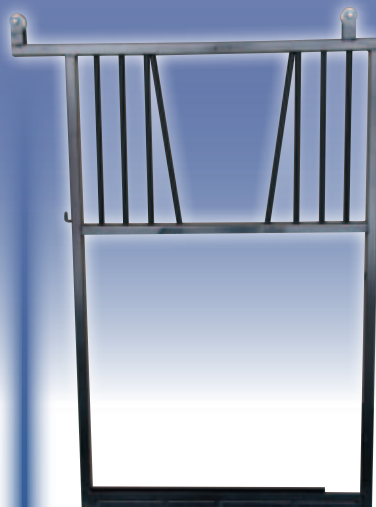
* All wood is extra. Takes standard size 2" x 6" lumber.

Diamond horse stalls are made with 1 $\frac{3}{4}$ " x 1 $\frac{3}{4}$ " Square Tube frame and $\frac{3}{4}$ " x $\frac{3}{4}$ " Square Tube Spindles turned diamond on grill work. Stalls are completely reversible for right or left hand door opening. Stall doors ride on Steel Track with Aluminum Trolleys and Sealed Bearings for Extra Smooth and Quiet Travel.

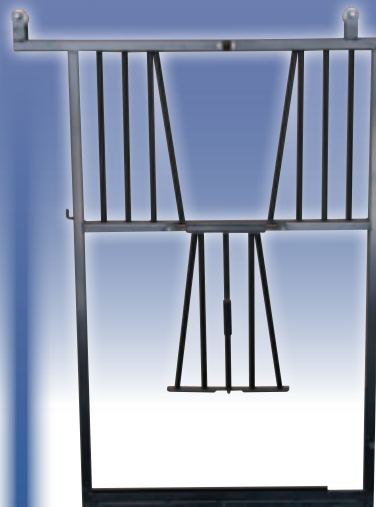
Optional Stall Doors



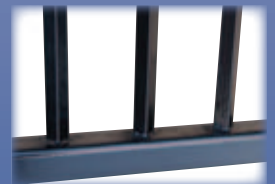
Solid Grill



"V" Opening



Drop Down Door



All stall doors feature diamond turned bars.

Manufactured from heavy duty steel, they are suitable for the most demanding barn use!

Diamond Horse Stall Dividers

Standard Stall Dividers come in 10' or 12' Sections
Powder Coated Finish in Different Colours Available



10" Stall Divider Shown with Full Spindle Top. All Wood is Extra. Takes standard 2" x 6" lumber, installed vertically.

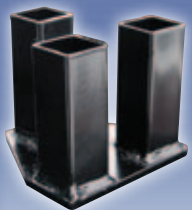


10' Stall Divider shown for Solid Wood. All wood is extra. Takes standard 2" x 6" lumber installed vertically.

All Stall Fronts and Dividers can be Interchanged for different size stalls with grill or Solid Dividers.

Stall Connectors & Accessories

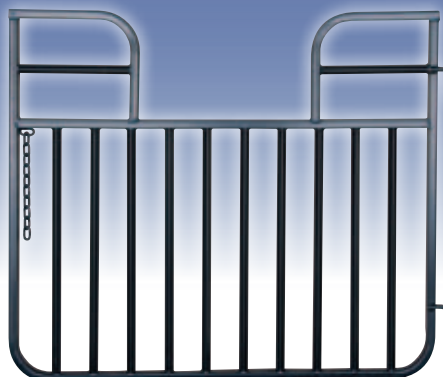
3-Way Connectors



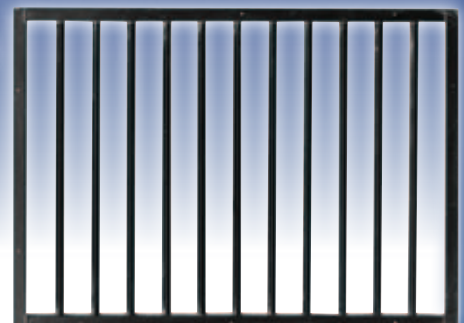
2-Way Connectors



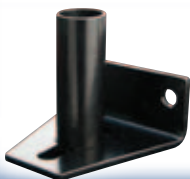
Swing Door



Window Grill



Adjustable Wall Bracket



Wall Feeder



MAR-WELD Equine Product Guide

ROUND PENS & CORRALS SYSTEMS



This unique new panel is designed with the horse person in mind, although it's lightweight, yet rugged design works for cattle as well. Panels are made with 1-1/4" x .100 wall square tube frame and 1 x 1 x .100 wall square tube inside horizontal bars turned to form a diamond shape for a unique look and added strength. Panels are offered in 5 or 6 bar versions and come standard in dark green *powder coated* finish for extra durability and appearance. Other colour options available upon request. Panels have square top corners to eliminate so called "V's" between panels when joined together. Another feature is the "**Quick Connect**" system that allows for faster setup and more versatility on uneven ground.

MAR-WELD INC. QUALITY GATES & FEEDERS

2690 Manser Rd., RR 1
Millbank, ON N0K 1L0

Toll Free: 1-866-698-1151
Fax: 519-698-1152

Available at:

Powder Coated Finish on All Systems!



Different Gates Available for All Length and Strength Requirements