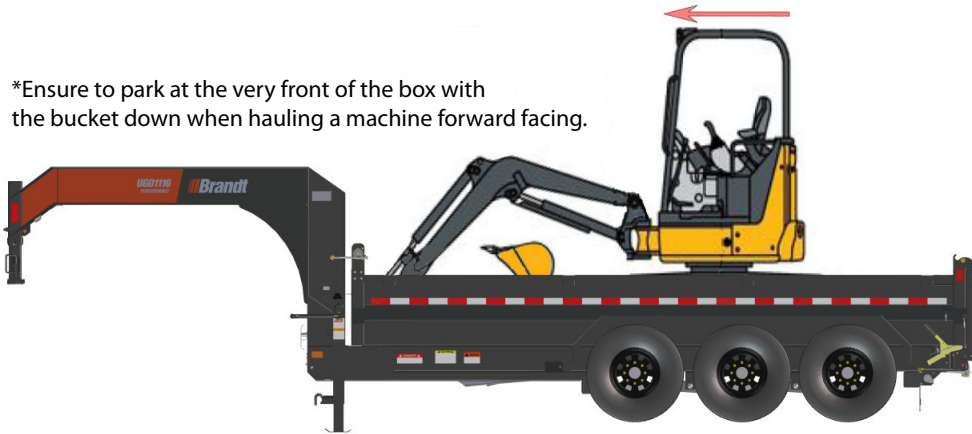
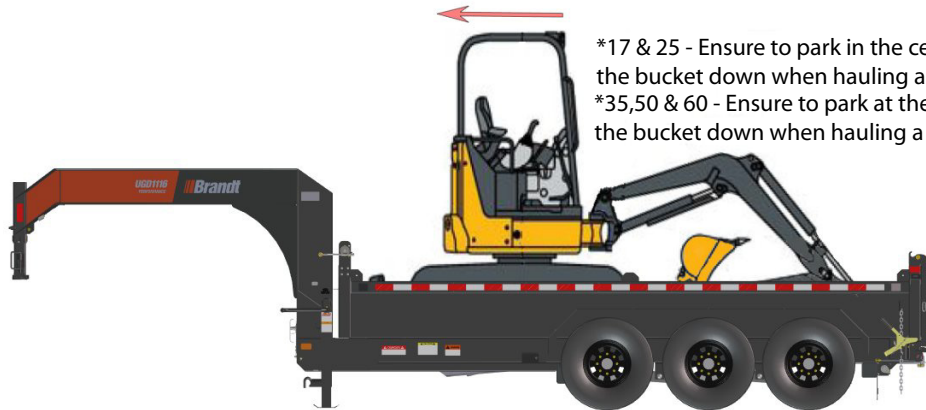


UGD1116 - Excavator

*Ensure to park at the very front of the box with the bucket down when hauling a machine forward facing.



*17 & 25 - Ensure to park in the center of the box with the bucket down when hauling a machine rear facing.
*35, 50 & 60 - Ensure to park at the very front of the box with the bucket down when hauling a machine rear facing.



The following list details whether the specified size of Excavator will fit the trailer orientation.

Excavator Size	17	26	35	50	60
Forward Facing	Yes	Yes	No	No	No
Rear Facing	Yes	Yes	Yes	Yes	Yes

Dump Box Style:

GVWR:

Tare:

Payload Capacity

Payload Center Dimension

UGD1116

Max

22,000 lbs

7000 lbs

15,000 lbs

65"

From Front of Deck

UGD1116SW

Straight Wall

22,000 lbs

6900 lbs

15,100 lbs

65"

From Front of Deck

DISCLAIMER: THIS DOCUMENT PROVIDES LOADING GUIDANCE TO ACHIEVE A PROPER DISTRIBUTION OF THE WEIGHT ON THE TRAILER. IT IS THE RESPONSIBILITY OF THE OPERATOR TO ENSURE THAT THE GVWR AND GAWR OF THE TRAILER, THE TOWING VEHICLE, AND THE COMBINATION OF VEHICLES IS NOT EXCEEDED.

Brandt