

Technical sheet :

TJ 65

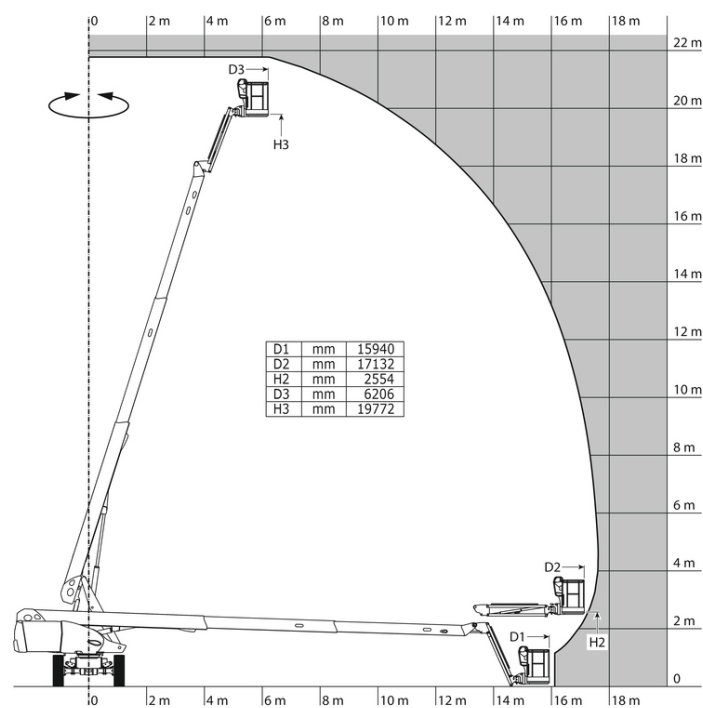


 **MANITOU**
HANDLING YOUR WORLD

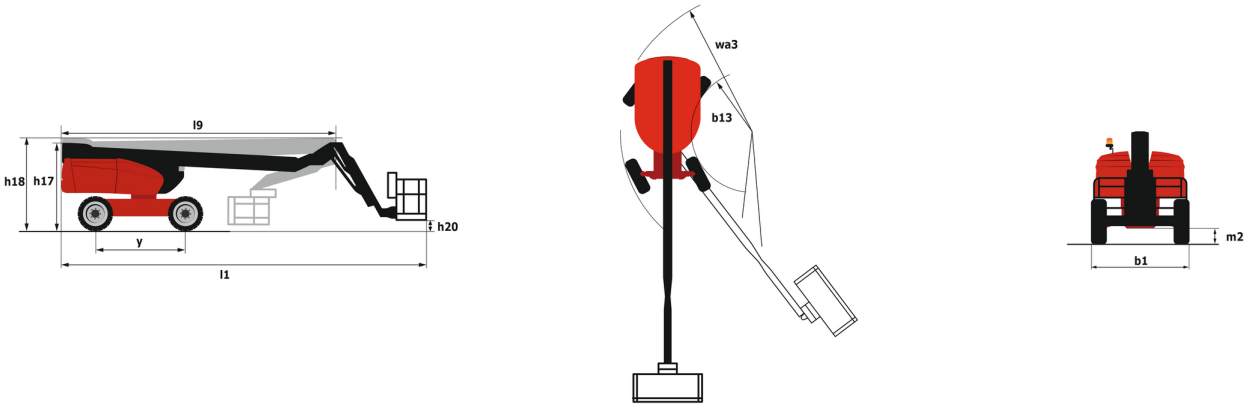
Capacities		Metric
Working height	h21	22 m
Platform height	h7	19.77 m
Max. outreach		17.63 m
Pendular arm rotation (bottom)		+66 °
Turret rotation		360 °
Platform rotation (right / left)		90 ° / 90 °
Number of people (inside)		2
Weight and dimensions		
Platform weight*		11850 kg
Platform dimensions (length x width)	lp / ep	2.10 m x 0.80 m
Overall width	b1	2.48 m
Overall length	l1	9.80 m
Overall height	h17	2.47 m
Overall length (stowed)	l9	7.29 m
Overall height (stowed)	h18	2.72 m
Floor height (access)	h20	0.39 m
Jib length	l13	2 m
Counterweight offset (turret at 90°)	a7	1.35 m
Internal turning radius (over tyres)	b13	2.96 m
External turning radius	Wa3	6.19 m
Ground clearance at centre of wheelbase	m2	0.44 m
Wheelbase	y	2.80 m
Performances		
Drive speed - stowed		4.40 km/h
Drive speed - raised		1 km/h
Gradeability		40 %
Wheels		
Tyres type		Solid Tyres Cured-On
Drive wheels (front / rear)		2 / 2
Steering wheels (front / rear)		2 / 0
Braking wheels (front / rear)		0 / 2
Engine/Battery		
Engine brand / model		Kubota - D1803-CR-TIE4B
I.C. Engine power rating / Power (kW)		36.98 kW / 37 kW
Miscellaneous		
Ground Pressure		18.20 dan/cm2
Hydraulic Pressure		340 bar
Hydraulic tank capacity		94 l
Fuel tank		72 l
Vibration on hands/arms		< 0 m/s²
Standards compliance		
This machine is in compliance with:		ANSI A92.20-2018 CSA B354.6 ICES-002-Issue 6 Standard Canadian EMC

TJ 65 - Load chart

Load Chart for AWP Metric



TJ 65 - Dimensional drawing



Equipment

Standard

4 simultaneous movements

4 wheel drive

Audible alarm and illuminated indicator lamp (leveling, overload, lowering)

Backup electrical pump

Continuous turret rotation

Differential locking on rear axle

Drive enable

Easy Manager

Electronic platform compensation

Emergency stop button in platform and on frame

Engine mounted on sliding platform

Front axle with limited slip

Fuel gauge with low level indicator

Fully galvanized basket with demountable floor

Hour meter

Integrated diagnostic assistance

Leveling unlocking

Management via engine speed bearing

Oscillating front axle

Proportional controls

Optional

110 V plug with differential circuit breaker

Beep upon travel

Biodegradable oil

Coded anti-start

Cold weather kit

Electric generator

Key lock on fuel tank

Non-marking tyres

Remote control for transport

SMS : Safe Man System

Screen protection on the lower box control

Water predisposition

Welder ready package

Working light



Head Office

B.P. 249 - 430 rue de l'Aubinière

44150 Ancenis Cedex - France

Tel: +33 (0)2 40 09 10 11 - Fax: +33 (0)2 40 09 10 97

www.manitou.com



This publication provides a description of the configuration versions and options for Manitou products, which may differ for equipment. The equipment presented in this brochure may be part of a series, as an option, or it may not be available, depending on the versions. Manitou reserves the right, at any time and without notice, to amend the specifications described and represented. The specifications provided do not bind the manufacturer. For more details, please contact your Manitou agent. This is not a contractually binding document. The presentation of the products is not contractually binding. List of specifications non-exhaustive. The logos as well as the visual identity of the company are owned by Manitou and cannot be used without authorisation. All rights reserved. The photos and diagrams contained in this brochure are only provided for consultation and information purposes.

MANITOU BF SA - Limited company with board of directors - Share capital: 39,668,399 euros - 857 802 508 RCS Nantes