

Technical sheet :

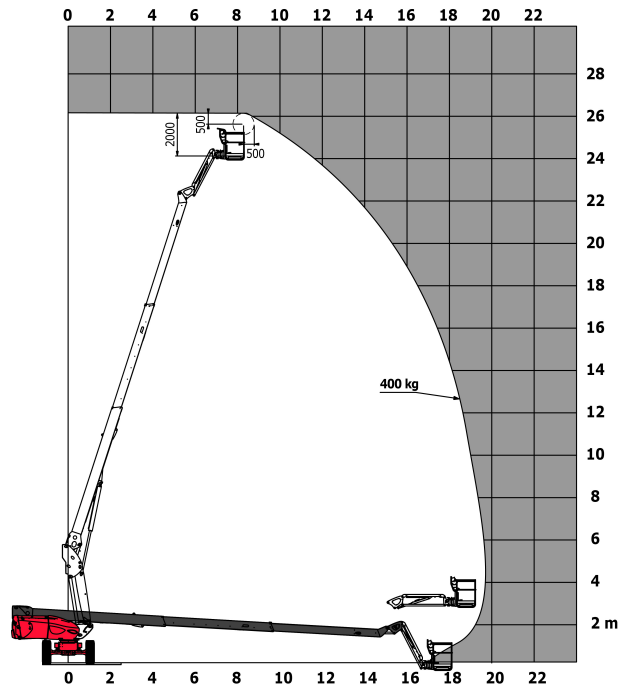
TJ 80+



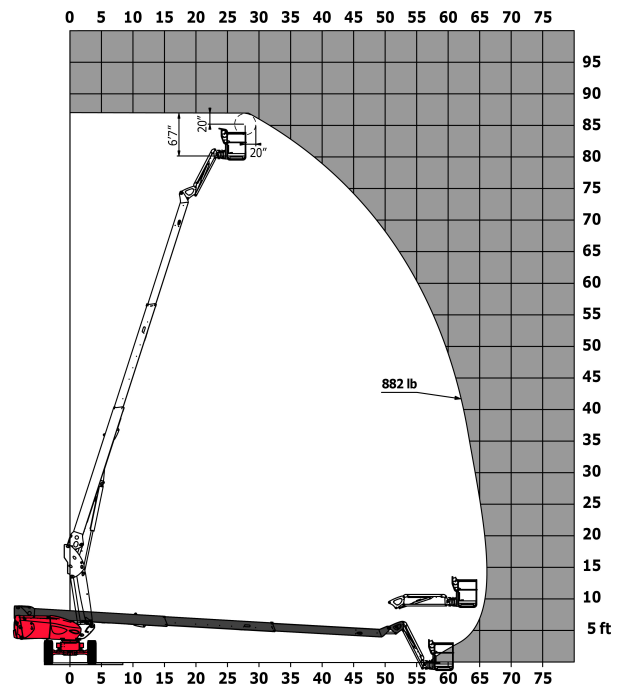
Capacities		Metric	Imperial
Working height	h21	25.72 m	84 ft 5 in
Platform height	h7	23.89 m	78 ft 5 in
Max. outreach	l4	19.7 m	64 ft 8 in
Pendular arm rotation (bottom)		+63 °	+63 °
Platform capacity	Q	408 kg	899 lbs
Turret rotation		360 °	360 °
Platform rotation (right / left)		90 ° / 90 °	90 ° / 90 °
Number of people (inside / outside)		3 / 3	3 / 3
Weight and dimensions			
Platform weight*		16305 kg	35946 lbs
Platform dimensions (length x width)	lp / ep	2.3 m x 0.9 m	7 ft 7 in x 2 ft 11 in
Overall width	b1	2.48 m	8 ft 2 in
Overall length	l1	10.84 m	35 ft 7 in
Overall height	h17	2.71 m	8 ft 11 in
Overall length (stowed)	l9	7.88 m	25 ft 10 in
Overall height (stowed)	h18	2.8 m	9 ft 2 in
Floor height (access)	h20	0.4 m	1 ft 4 in
Jib length	l13	2.4 m	7 ft 10 in
Counterweight offset (turret at 90°)	a7	1.43 m	4 ft 8 in
Internal turning radius (over tyres)	b13	1.97 m	6 ft 6 in
External turning radius	Wa3	4.35 m	14 ft 3 in
Ground clearance at centre of wheelbase	m2	0.41 m	1 ft 4 in
Wheelbase	y	2.8 mm	0.11 in
Performances			
Drive speed - stowed		4.7 km/h	2.9 mph
Drive speed - raised		0.8 km/h	0.5 mph
Gradeability		40 %	40 %
Permissible leveling		4 °	4 °
Wheels			
Tyres type		Solid Tyres Cured-On	Solid Tyres Cured-On
Dimensions of front wheels / rear wheels		1,02 x 0,36 - 1,02 x 0,36	1,02 x 0,36 - 1,02 x 0,36
Drive wheels (front / rear)		2 / 2	2 / 2
Steering wheels (front / rear)		2 / 2	2 / 2
Braking wheels (front / rear)		2 / 2	2 / 2
Engine/Battery			
Engine brand / model / norm		Kubota - D1803-CR-T1E4B - Stage V	Kubota - D1803-CR-T1E4B - Stage V
I.C. Engine power rating / Power (kW)		49.6 Hp / 37 kW	49.6 Hp / 37 kW
Miscellaneous			
Ground Pressure		21.3 daN/cm²	21.3 daN/cm²
Hydraulic Pressure		400 Bar	28 PSI
Hydraulic tank capacity		94 l	20.68 gal
Fuel tank		72 l	15.84 gal
Vibration on hands/arms		< 0.5 m/s	< 1.64 ft/s
Standards compliance			
This machine is in compliance with:		European directives: 2006/42/EC- Machinery (revised EN280:2013) - 2004/108/EC (EMC) - 2006/95/EC (Low voltage)	European directives: 2006/42/EC- Machinery (revised EN280:2013) - 2004/108/EC (EMC) - 2006/95/EC (Low voltage)

Load chart

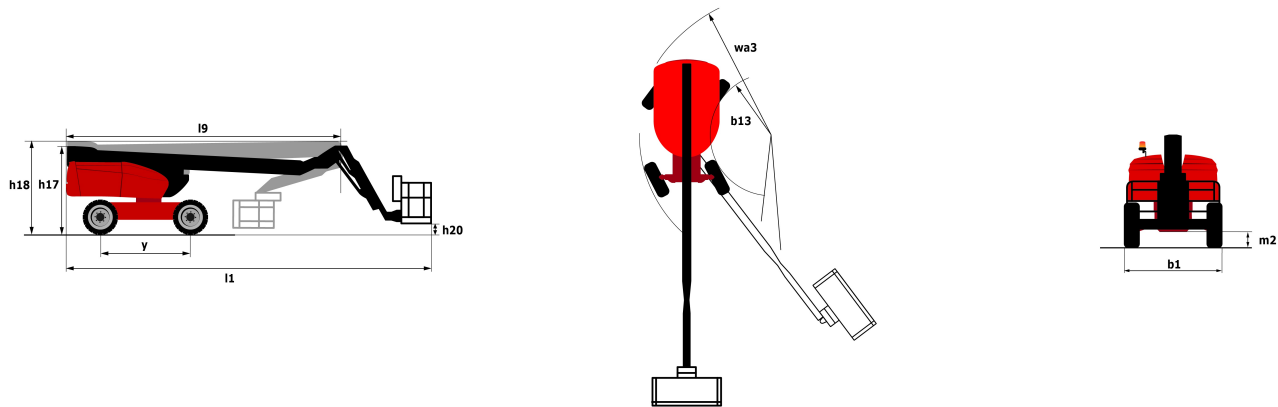
Load Chart for AWP Metric



Load Chart for AWP Imperial



Dimensional drawing



Equipment

Standard

- 110 V plug with differential circuit breaker
- 4 wheel drive
- 4 wheel steer with crab mode
- Audible alarm and illuminated indicator lamp (leveling, overload, lowering)
- Backup electrical pump
- Battery cut-off
- CAN bus technology
- Continuous turret rotation
- Differential locking on rear axle
- Easy Manager
- Electronic platform compensation
- Emergency stop button in platform and on frame
- Engine mounted on sliding platform
- Fuel gauge with low level indicator
- Hour meter
- Integrated diagnostic assistance
- Large basket with three entries
- Lift and drive
- Operator presence pedal
- Oscillating front axle
- Rear axle with limited slip differential
- Remote control for transport
- Turret orientation information
- Water heater

Optional

- Additional storage boxes
- Air predisposition
- Beep on every movement
- Beep upon travel
- Biodegradable oil
- Catalytic cleaner
- Coded anti-start
- Combination Radiator & Hydraulic Oil Cooler
- Extreme cold diesel fuel

Optional

Extreme cold oil

Key lock on fuel tank

Non-marking tyres

Onboard generator (5 kW)

Panel support kit

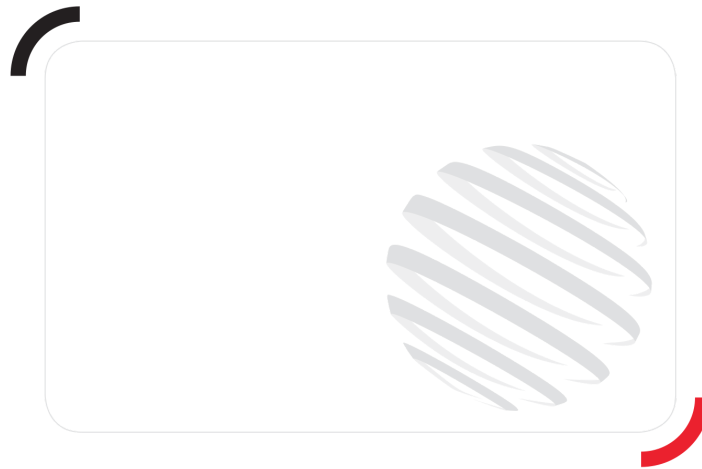
SMS : Safe Man System

Tube support kit

Turret cover with key lock

Welder ready package

Working light



Siège Social

430 rue de l'Aubinière - 44150 Ancenis Cedex - France

Tel: +33(0)2 40 09 10 11 - Fax: +33 (0)2 40 09 10 97

www.manitou.com



This brochure describes versions and configuration options for Manitou products which may be fitted with different equipment. The equipment described in this brochure may be standard, optional or not available depending on version. Manitou reserves the right to change the specifications shown and described at any time and without prior warning. The manufacturer is not liable for the specifications given. For more information, contact your Manitou dealer. Non-contractual document. Product descriptions may differ from actual products. List of specifications is not comprehensive. The logos and visual identity of the company are the property of Manitou and may not be used without authorisation. All rights reserved. The photos and diagrams contained in this brochure are provided for information only.

MANITOU BF SA - Limited company with board of directors - Share capital: 39,668,399 euros - 857 802 508
RCS Nantes